

# ENROLLMENT PROJECTION 2017-18

Independent School District 877  
Buffalo-Hanover-Montrose

November 28, 2016

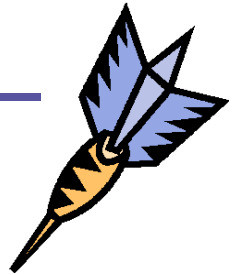


*Making a Difference!*

# Enrollment Projection Report

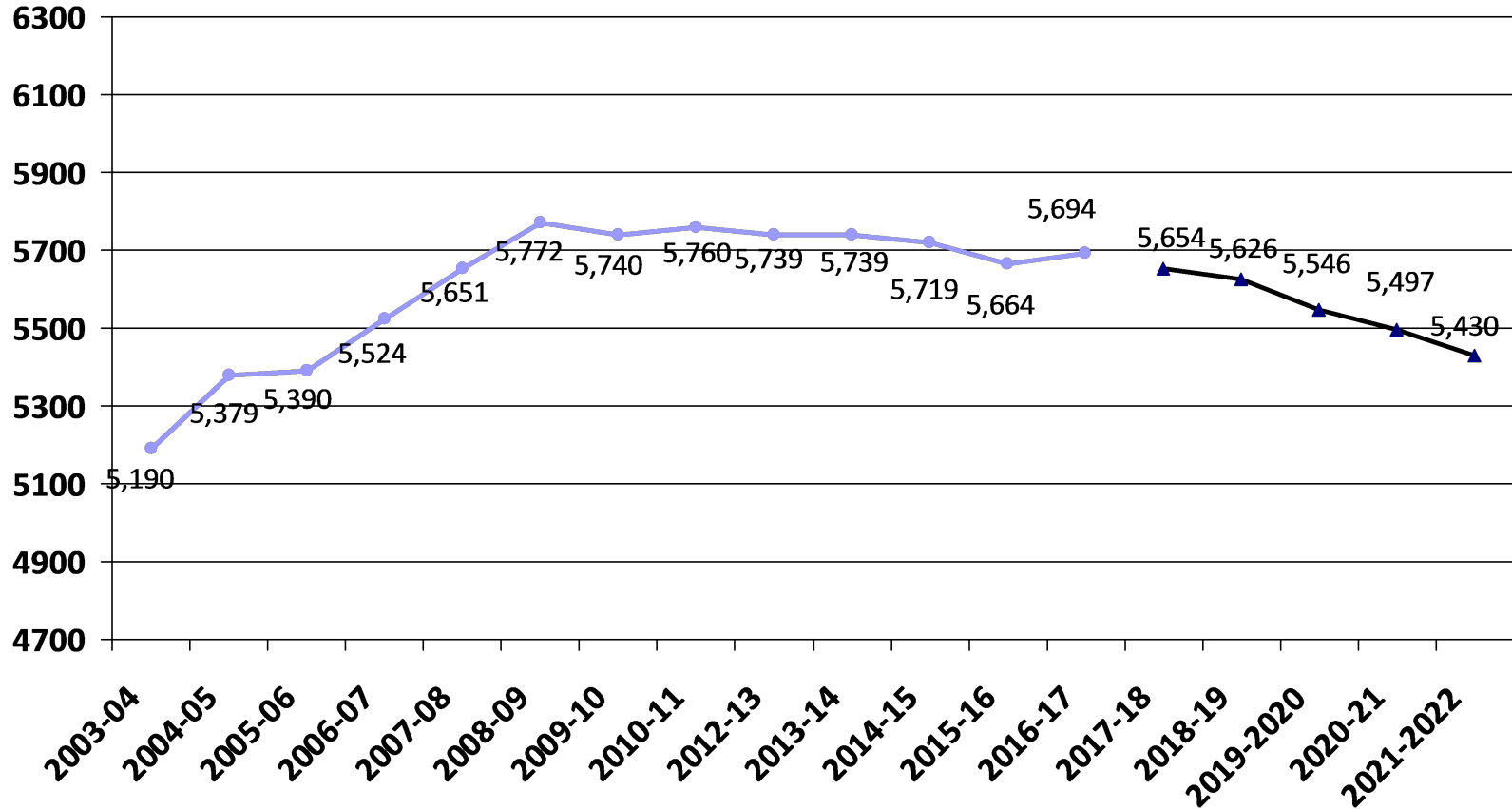
---

- Review of K-12 enrollment as of Oct. 1<sup>st</sup>
- Resident enrollment
- Open enrollment & tuition
- Nonpublic enrollment
- Fall vs. spring enrollment
- Review 2016-17 enrollment projection
- 2017-18 enrollment projection





# Historical and 2016-17 Projected K-12 Enrollment as of Oct. 1<sup>st</sup>





# Review of K-12 Enrollment as of Oct. 1<sup>st</sup>

---

- The school district growth trend came to a halt in the 2009-10 school year but we are ahead of the projection for 2016-17.
- The five-year enrollment is a decline and currently averaging -8 students/year.
- Total enrollment decline for the past five years is -40 students or -.70%.

	2012-13	2013-14	2014-15	2015-16	2016-17
<b>K-12 enrollment</b>	5,742	5,739	5,719	5,664	5,694
<b>Change over prior year</b>	8	-3	-20	-55	30
<b>% change</b>	.14%	-.05%	-.35%	-.96%	.53%

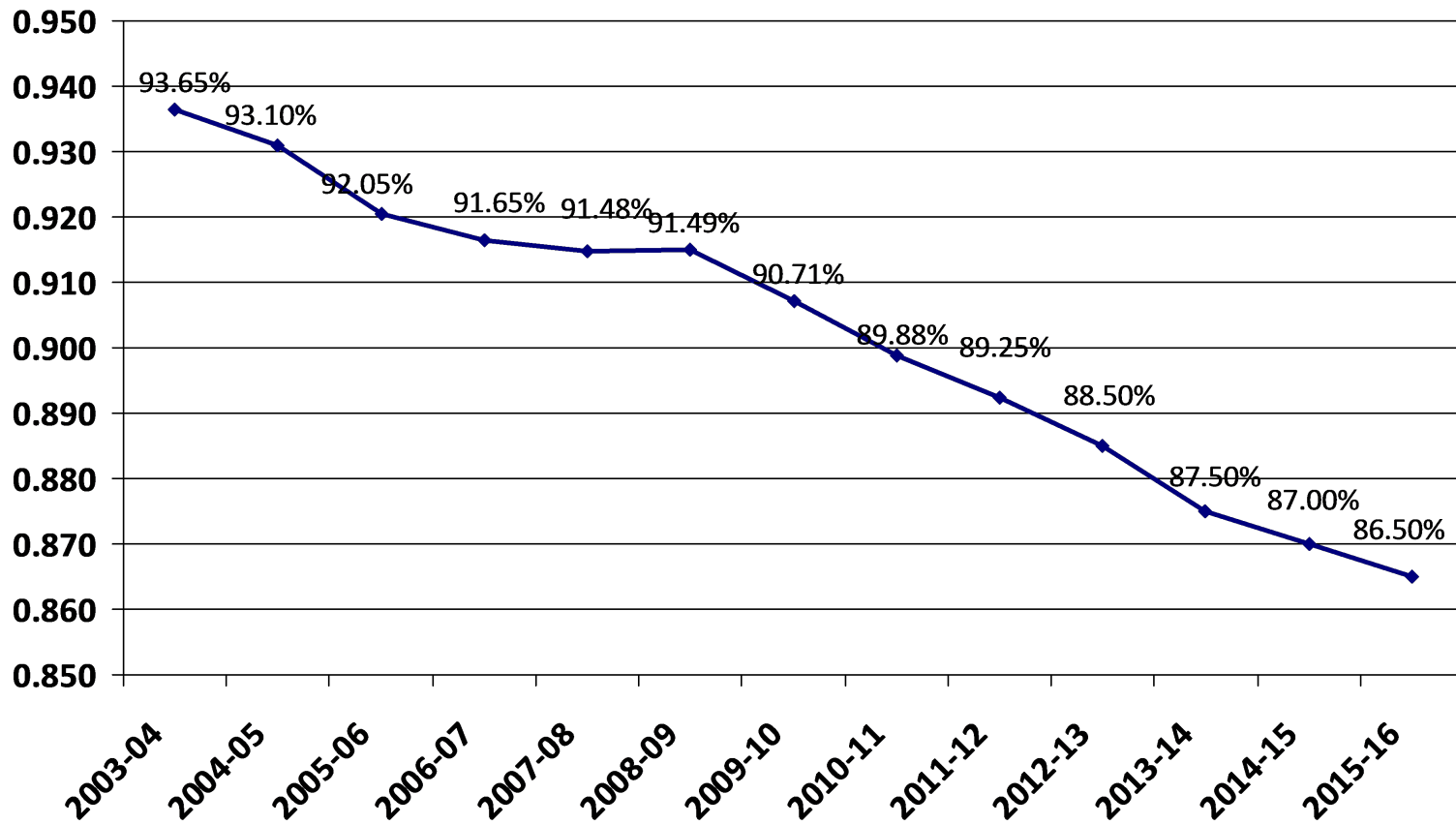


# Total Resident Students Enrolled in ISD 877 as of June 30<sup>th</sup>

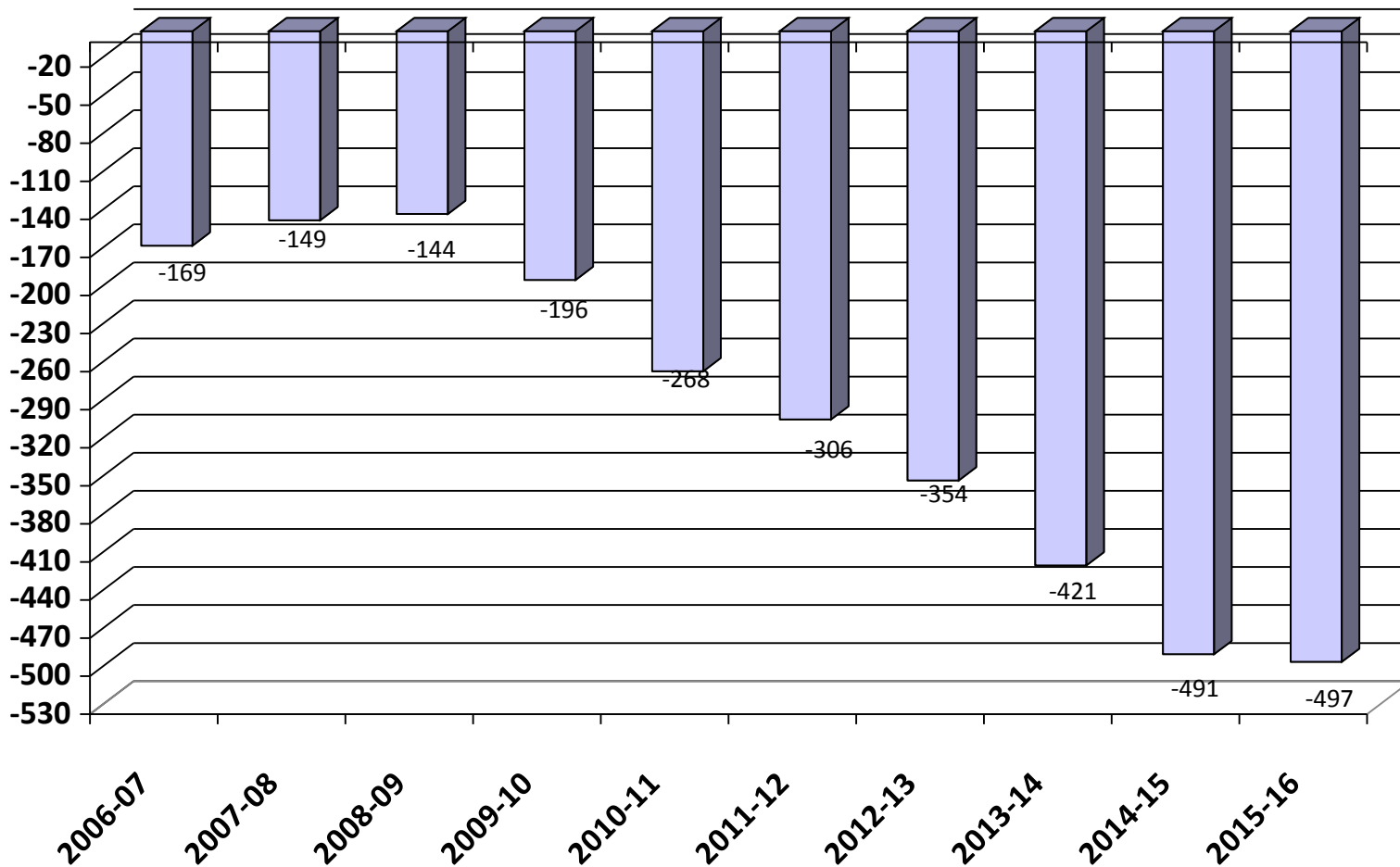
- BHM's resident population and residents served population grew this past year. Residents served was at its highest point in the last five years but still shows a decline in percentage served vs total population.

	2011-12	2012-13	2013-14	2014-15	2015-16
<b>Residents served</b>	5,358	5,380	5,367	5,402	5,369
<b>Residents going elsewhere</b>	645	701	768	810	837
<b>Total Residents</b>	6,003	6,081	6,135	6,212	6,206
<b>Change over prior year</b>	2	78	54	77	-6
<b>% change</b>	.03%	1.3%	.89%	1.26%	-.10%
<b>% Served vs Total Population</b>	89.3%	88.5%	87.5%	87.0%	86.5%

# Total Resident Students Enrolled in ISD 877 as of June 30<sup>th</sup>



# Open Enrollment & Tuition Net Gain/Loss as of June 30<sup>th</sup>





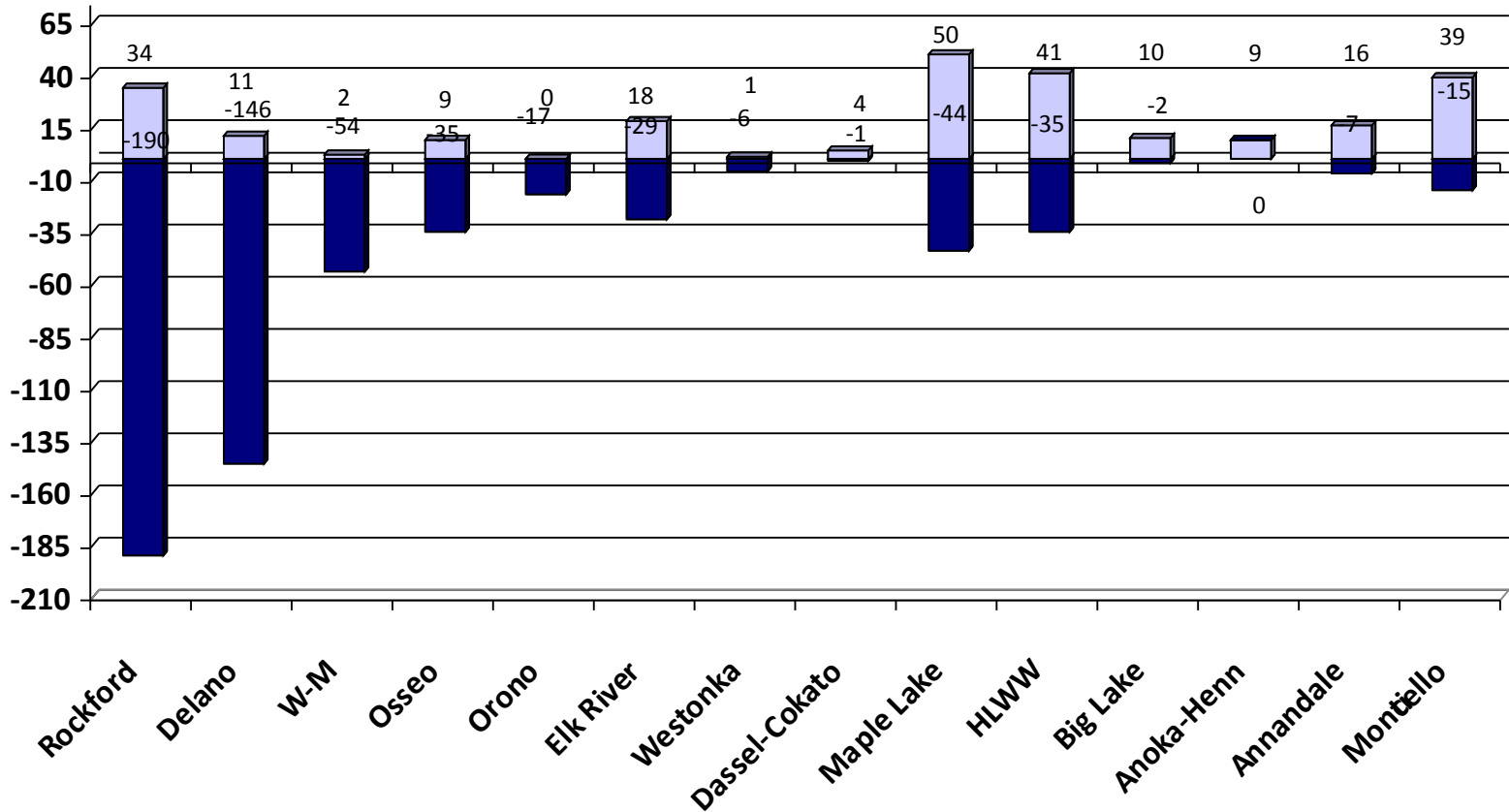
# 2015-16 Open Enrollment & Tuition Gain/Loss by District as of June 30<sup>th</sup>

District	In	Out	Net	
Rockford	34	-190	-156	<b>Other</b>
Delano	11	-146	-135	<b><u>Targeted Services,</u></b>
Watertown-Mayer	2	-54	-52	<b><u>Tuition, and Online</u></b>
Osseo	9	-35	-26	<b>WTC -35</b>
Orono	0	-17	-17	<b>MAWSECO -9</b>
Elk River	18	-29	-11	<b>SW Metro -7</b>
Westonka	1	-6	-5	<b>MN Transitions -18</b>
Dassel-Cokato	4	-1	3	<b>Houston (online) -13</b>
Maple Lake	50	-44	6	<b>Jane Goodall -12</b>
Howard Lake-Waverly-Winsted	41	-35	6	<b>Beacon Academy -12</b>
Big Lake	10	-2	8	<b>Swan River Charter -8</b>
Anoka-Hennepin	9	0	9	<b>Spectrum Charter -7</b>
Annandale	16	-7	9	
Menticello	20	15	34	

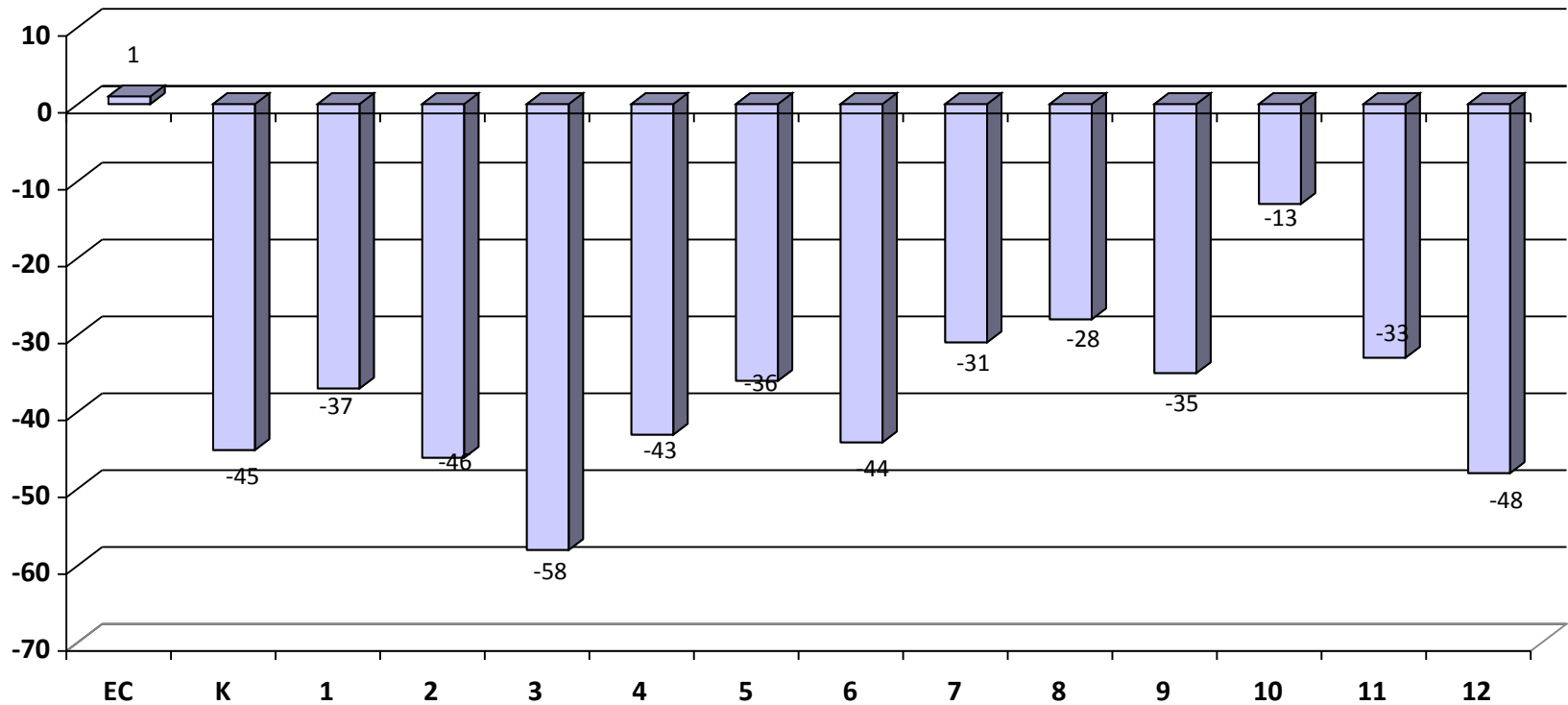




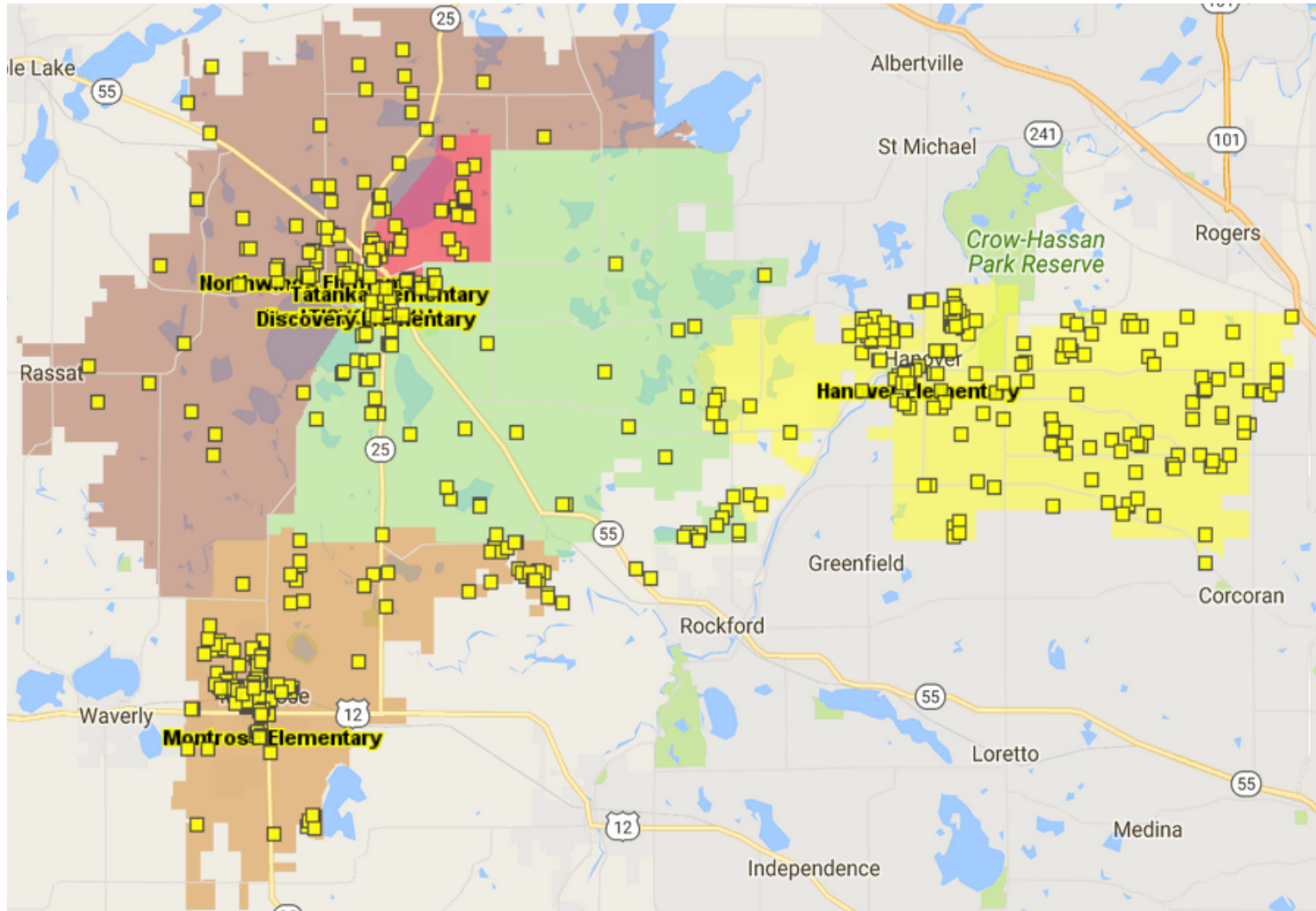
# 2015-16 Open Enrollment & Tuition Gain/Loss by District as of June 30<sup>th</sup>



# 2015-16 Open Enrollment & Tuition by Grade as of June 30<sup>th</sup>



# 2016-17 Resident Open Enrolled to Other Districts

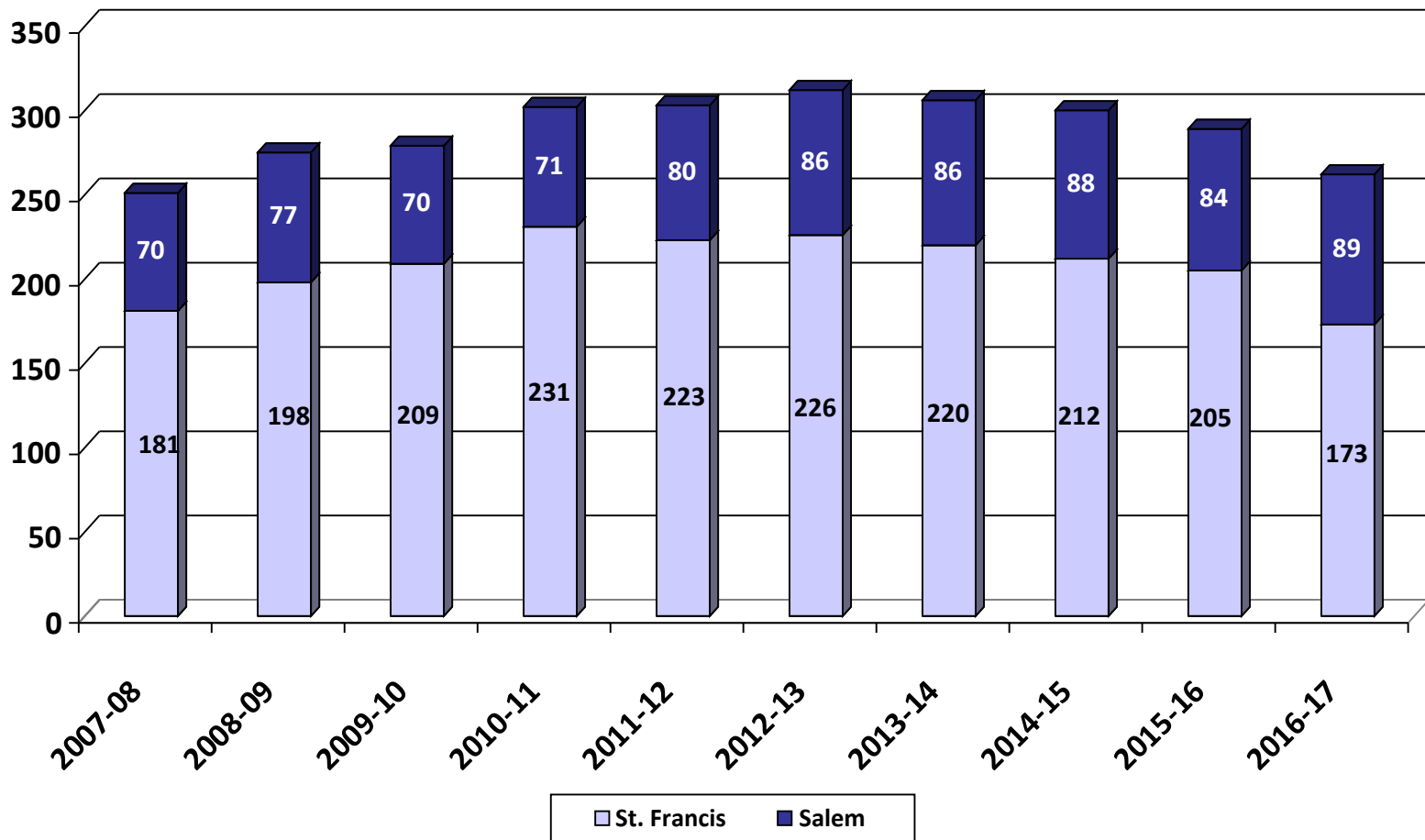


# Nonpublic History

- Two nonpublic schools in the BHM district: St. Francis Xavier in Buffalo and Salem Lutheran in Greenfield.
- Both schools serve students from kindergarten through 8<sup>th</sup> grade.

	07-08	08-09	09-10	10-11	11-12	12-13	13-14	14-15	15-16	16-17
<b>Salem</b>	70	77	70	71	80	86	86	88	84	89
<b>St. Francis</b>	181	198	209	231	223	226	220	212	205	173
<b>Total</b>	<b>251</b>	<b>275</b>	<b>279</b>	<b>302</b>	<b>303</b>	<b>312</b>	<b>306</b>	<b>300</b>	<b>289</b>	<b>262</b>
<b># Change</b>	13	24	4	23	1	9	-6	-6	-11	-27
<b>% Change</b>	5.5%	9.6%	1.5%	8.2%	.33%	2.97%	-.92%	-1.96%	-3.67%	-9.34%

# Nonpublic History



# 2015-16 Enrollment Fall vs. Spring

---

- Historically, the district's K-12 enrollment decreases from October 1 to June 1.
- Most of the enrollment drops happen in grades 9-12.

	<b>Oct. 1<sup>st</sup>, 2015</b>	<b>Jun. 1<sup>st</sup>, 2016</b>	<b>Net</b>
<b>K</b>	370	377	7
<b>Gr. 1-5</b>	2,144	2,183	39
<b>Gr. 6-8</b>	1,328	1,327	-1
<b>Gr. 9-12</b>	1,822	1,723	-99
<b>Total</b>	5,664	5,610	<b>-54</b>

# Historical Enrollment

## Fall vs. Spring

---

- The district had one flat year (2006-07) of enrollment growth. All other years have declined during the year.

	<b>K</b>	<b>Gr. 1-5</b>	<b>Gr. 6-8</b>	<b>Gr. 9-12</b>	<b>Net</b>
<b>2005-06</b>	4	-1	-9	-56	-62
<b>2006-07</b>	-2	-25	10	-33	0
<b>2007-08</b>	9	3	3	-55	-40
<b>2008-09</b>	0	0	-24	-84	-108
<b>2009-10</b>	-2	14	-17	-58	-63
<b>2010-11</b>	1	-11	-10	-63	-83
<b>2011-12</b>	-10	-11	-14	-94	-129
<b>2012-13</b>	-2	-14	1	-86	-101
<b>2013-14</b>	2	-7	2	-127	-130
<b>2014-15</b>	-10	6	-8	-89	-101
<b>2015-16</b>	7	39	-1	-99	-54



# Review of 2016-17 Enrollment Projection

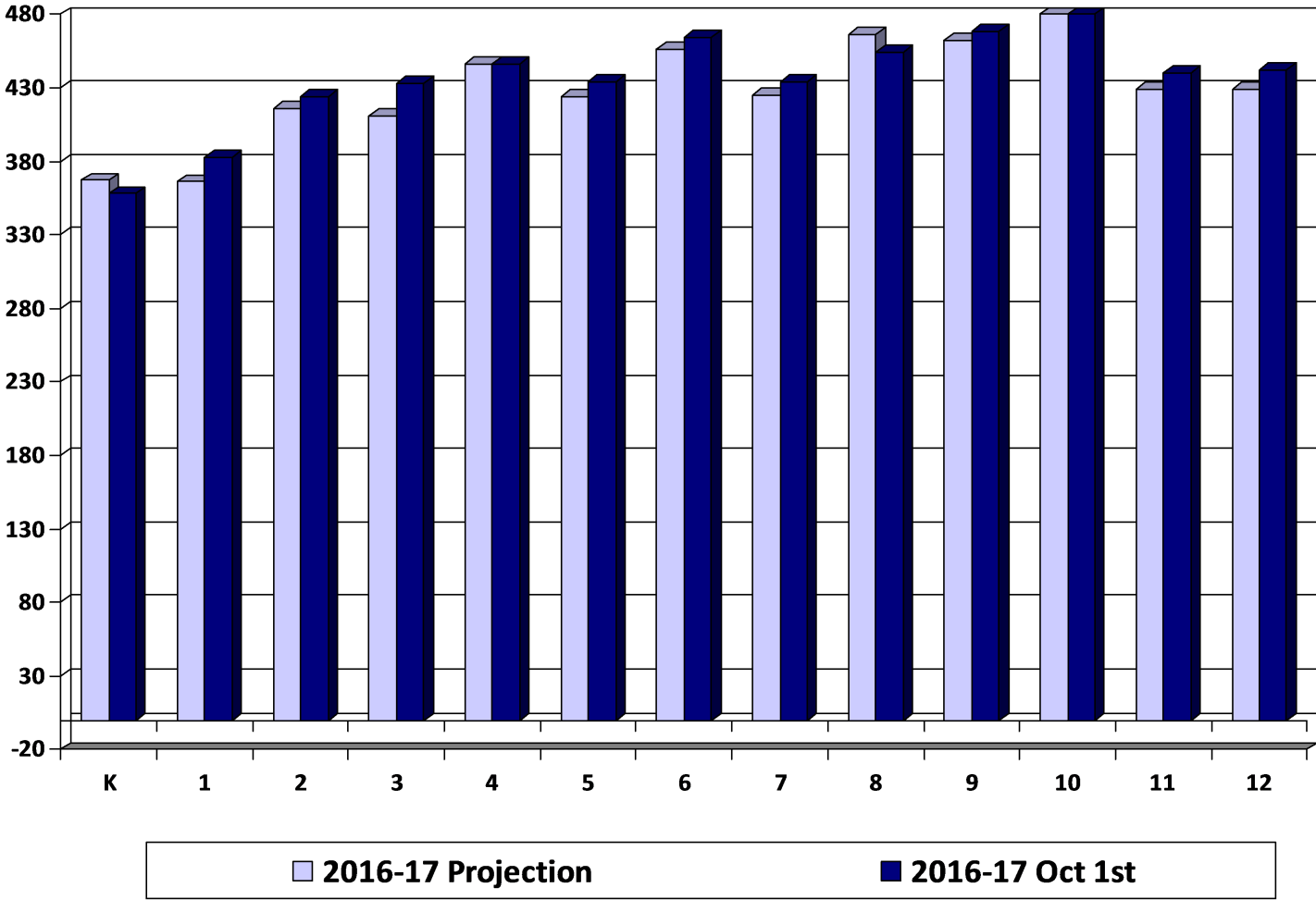
---

- Last year's enrollment projection was under-estimated by 70 students.
- Our internal monthly enrollment reports adjust down post-secondary and shared time students.
- The official Oct. 1<sup>st</sup> MARSS submission by MDE will report a higher enrollment with post-secondary and shared time students.

	<b>2016-17 Projection</b>	<b>2016-17 Oct. 1<sup>st</sup></b>	<b>Difference</b>
<b>K</b>	367	358	-9
<b>Gr. 1-5</b>	2,063	2,120	57
<b>Gr. 6-8</b>	1,347	1,352	5
<b>Gr. 9-12</b>	1,847	1,864	17
<b>Total</b>	5,624	5,694	70



# Review of 2016-17 Enrollment Projection by Grade



# Enrollment Projection Data

---

- The district uses the Schoolfinances.com enrollment projection model.
- The model allows schools to develop enrollment projections based on three different sets of data:
  - October 1<sup>st</sup> MARSS submission**
  - End of Year ADM** is generally used for financial forecast
  - District Data** allows schools to enter enrollment history taken at any time, resident ADM or any other historical data by grade

# Kindergarten Projection Methods

---

- **Hold constant** maintains the 2016-17 kindergarten level.
- **Linear projection** is a straightforward mathematical projection based on nothing more than the past five years of data.
- **County birth method** uses the total number of live births in Wright County and examines what percentage of those births enroll in kindergarten. The projection is based on the average percentage of the last four years.
- **Zip code method** examines the zip codes in the district and uses a linear projection of live births on the last four years of data and computes the projected enrollment based on the lowest, average, and highest ratios.
- **District-determined method** examines county birth rates in Wright County and compares that to actual student enrollment numbers in the District and projects that percentage for the next five years.



# Kindergarten Projection Methods

<b>Birth Year</b>	<b>Kdgn Enroll Year</b>	<b>Wright Co. Births</b>	<b>Actual Kdgn Enrollment</b>	<b>% of Wright Co. Births Enrolled</b>
<b>2005</b>	<b>2010</b>	2,023	455	22.5%
<b>2006</b>	<b>2011</b>	2,152	417	19.4%
<b>2007</b>	<b>2012</b>	2,183	433	19.8%
<b>2008</b>	<b>2013</b>	2,095	378	18.0%
<b>2009</b>	<b>2014</b>	1,943	417	21.5%
<b>2010</b>	<b>2015</b>	1,900	370	19.5%
<b>2011</b>	<b>2016</b>	1861	358	19.2%
<b>2012</b>	<b>2017</b>	1830	355*	19.4%*
<b>2013</b>	<b>2018</b>	1787	347*	19.4%*
<b>2014</b>	<b>2019</b>	1799	349*	19.4%*
<b>2015</b>	<b>2020</b>	1764	342*	19.4%*

\* Projected K enrollment based on County births

# Kindergarten Projection Methods

- Using Oct. 1<sup>st</sup> district data

	12-13	13-14	14-15	15-16	16-17	17-18	18-19	19-20	20-21	21-22
<b>Actual enrollment</b>	433	387	417	370	358					
<b>Hold constant</b>						358	358	358	358	358
<b>Linear projection</b>						348	334	319	305	291
<b>Wright Co. Ave. births</b>						362	354	352	345	337
<b>Zip code method - Low</b>						341	321	340	336	325
<b>District Determined Method</b>						<b>355</b>	<b>347</b>	<b>349</b>	<b>342</b>	<b>336</b>

# Enrollment Projection Methods

---

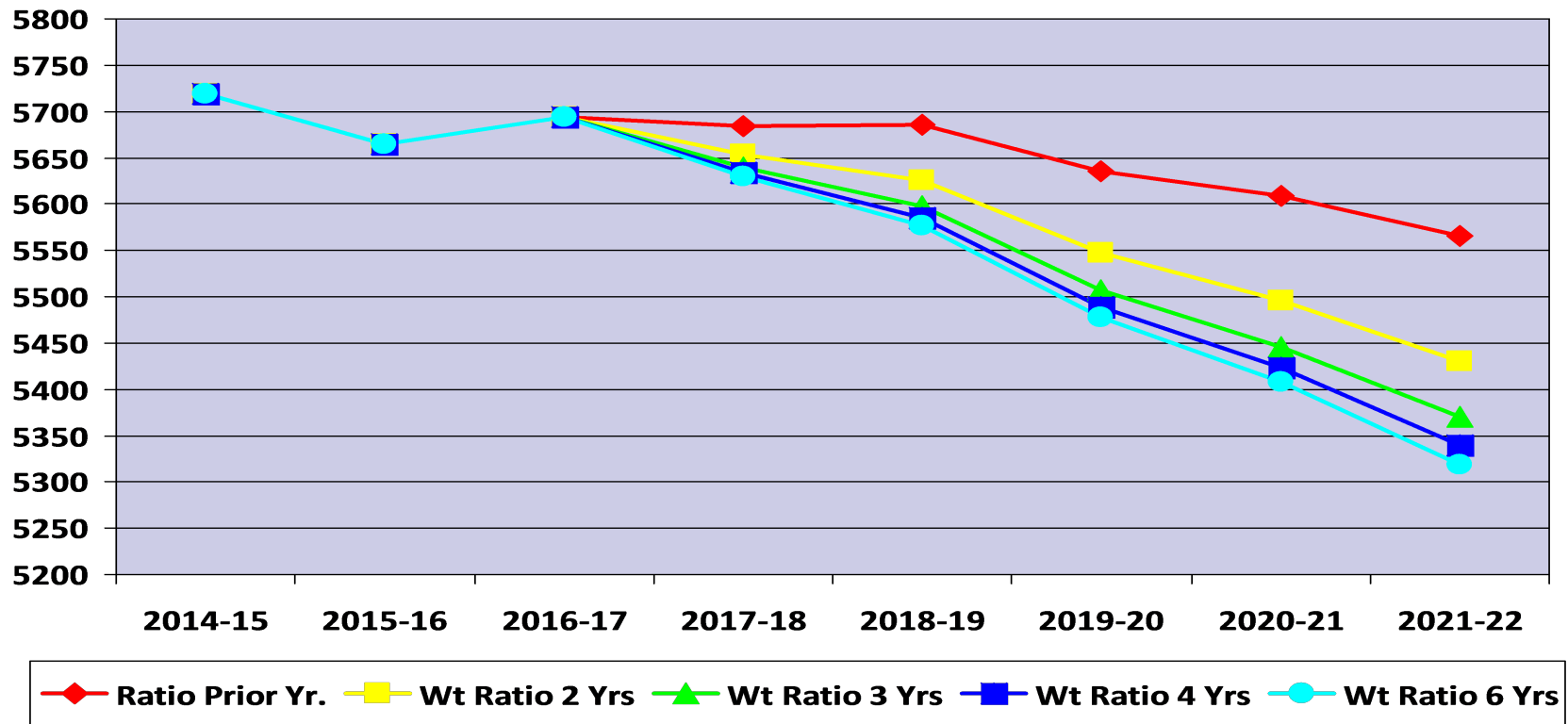
- After the kindergarten enrollment projection is complete, the overall K-12 enrollment is determined by a variety of methods:
  - Cohort Survival Method
  - Weighted Cohort Survival Method
  - Numerical Survival Method
  - Weighted Numerical Survival Method
  - Merged Method

# Projection Methods Comparison

- Using Oct. 1<sup>st</sup> district data, eighteen different variations were examined.
- The following five were selected for detailed analysis:

	<b>14-15</b>	<b>15-16</b>	<b>16-17</b>	<b>17-18</b>	<b>18-19</b>	<b>19-20</b>	<b>20-21</b>	<b>21-22</b>
<b>Ratio Pr. Yr</b>	5,719	5,664	5,694	5,684	5,686	5,635	5,609	5,565
<b>Wt Ratio 2 Years</b>	5,719	5,664	5,694	5,654	5,626	5,547	5,496	5,430
<b>Wt Ratio 3 Years</b>	5,719	5,664	5,694	5,639	5,597	5,507	5,446	5,370
<b>Wt Ratio 4 Years</b>	5,719	5,664	5,694	5,634	5,585	5,489	5,423	5,340
<b>Wt Ratio 6 Years</b>	5,719	5,664	5,694	5,630	5,577	5,478	5,408	5,318
<b>Max Difference</b>				54	109	157	201	247

# Projection Methods Comparison





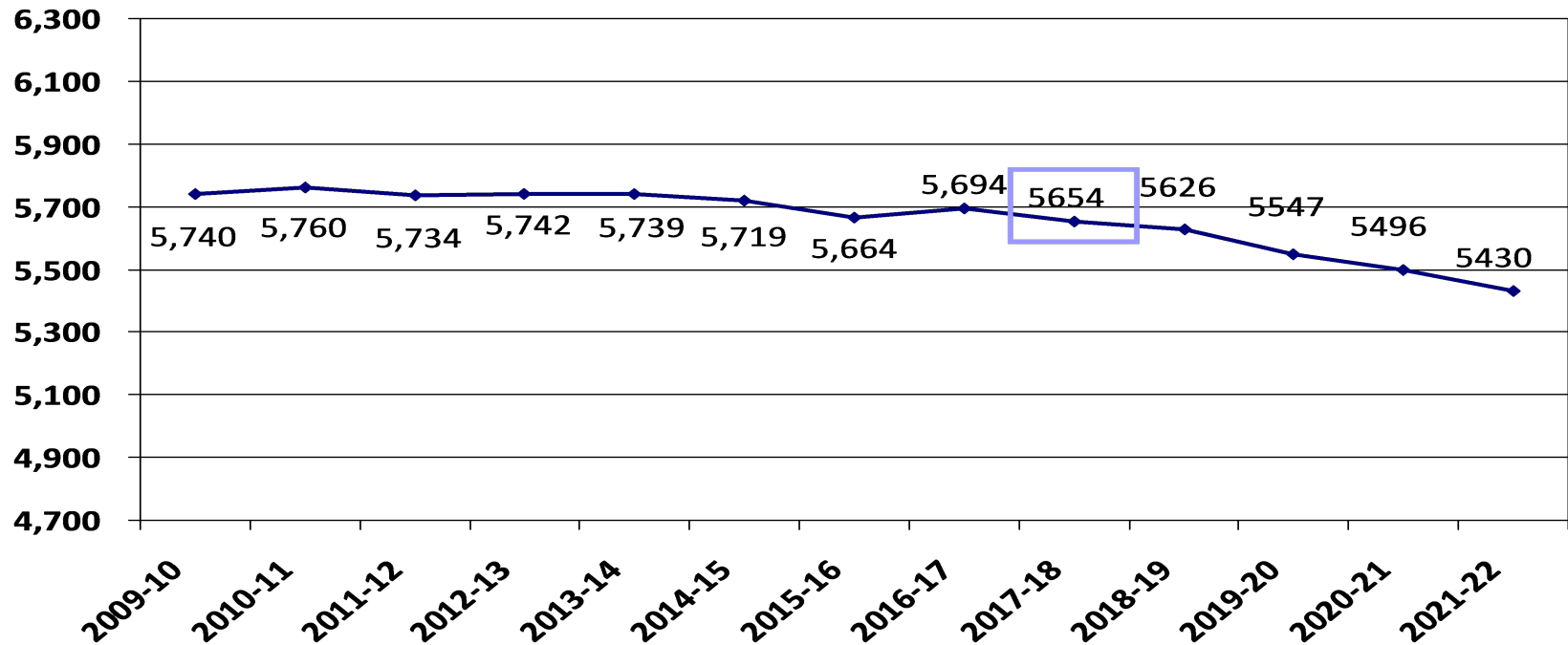


# 2017-18 Enrollment Projection

---

- Factors considered: housing market, economic conditions, Wright County births, and open enrollment
- Weighted ratio 2 years
- K-12 Enrollment 5,654
- Decrease of 40 students or 0.7%

# 2017-18 Enrollment Projection



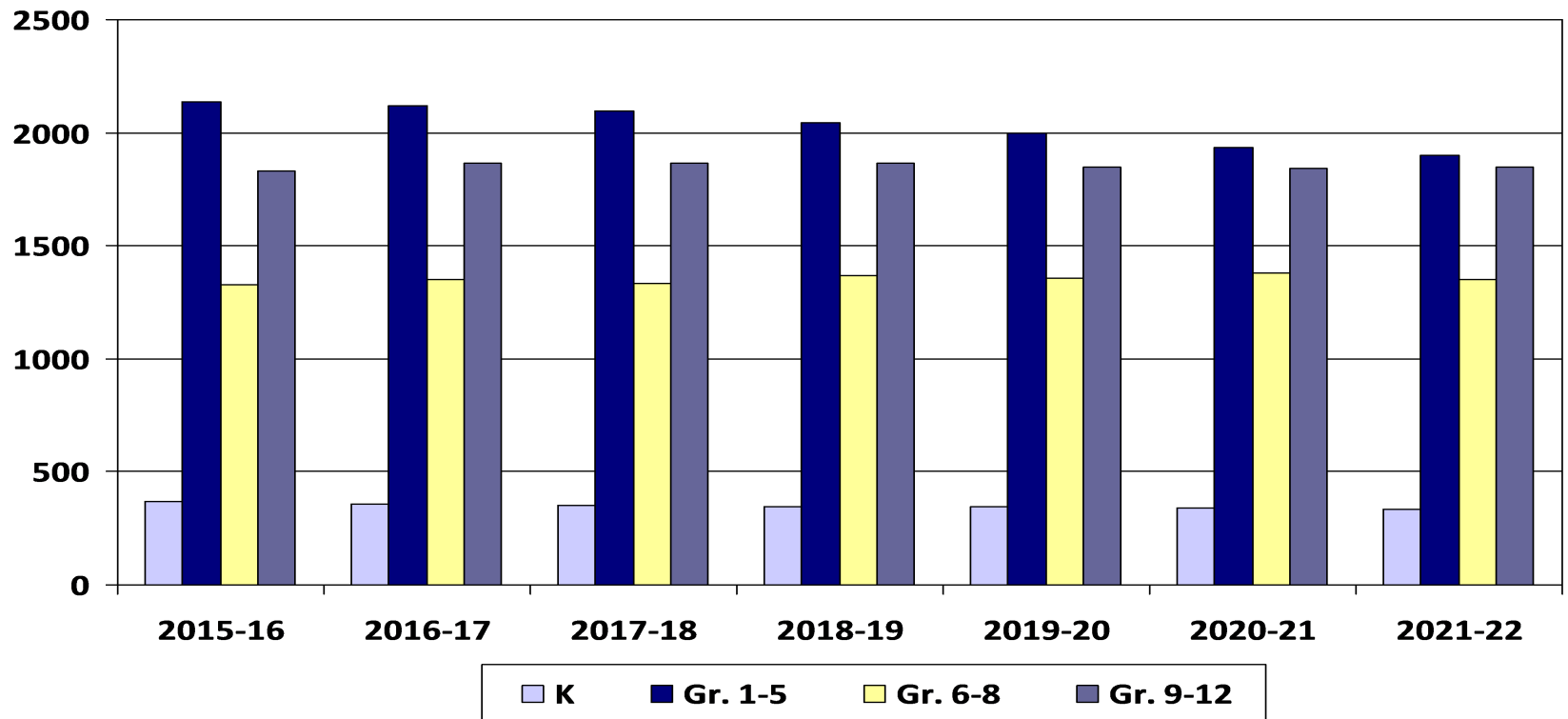


# 2017-18 Enrollment Projection by Grade Groupings

- With future enrollments, need to consider building capacity:
  - BHS – 1,935, PHX – 64 and PRIDE – 25
  - BCMS – 1,375
  - Elementary – 3,200

	2016-17	2017-18	2018-19	2019-20	2020-21	2021-22
<b>K</b>	358	355	347	349	342	336
<b>Gr. 1-5</b>	2,120	2,097	2,044	1,995	1,937	1,897
<b>Gr. 6-8</b>	1,352	1,336	1,369	1,356	1,379	1,349
<b>Gr. 9-12</b>	1,864	1,866	1,866	1,846	1,839	1,848
<b>Total</b>	5,694	5,654	5,626	5,546	5,497	5,430
		-40	-28	-80	-49	-67
		-.70%	-.50%	-1.42%	-.88%	-1.22%

# 2017-18 Enrollment Projection by Grade Groupings

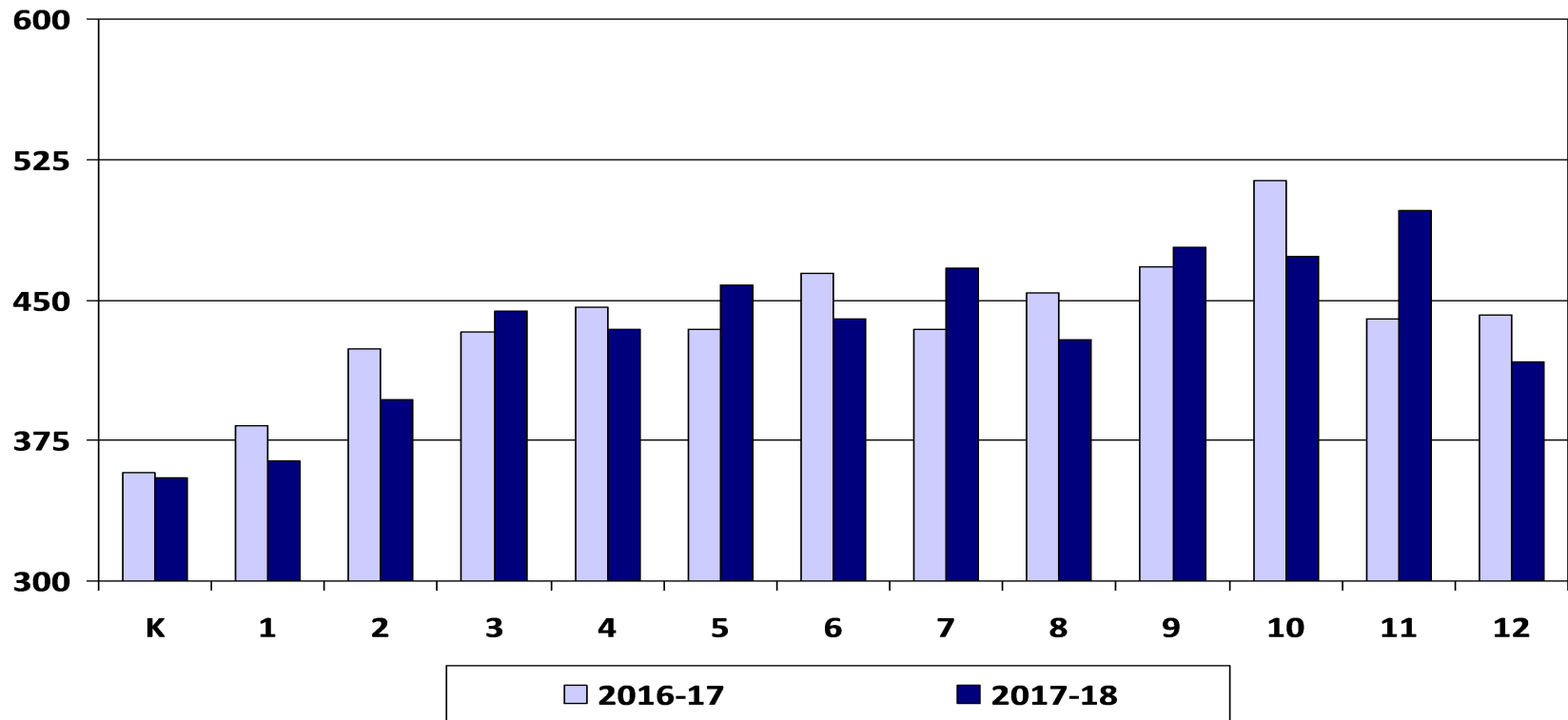




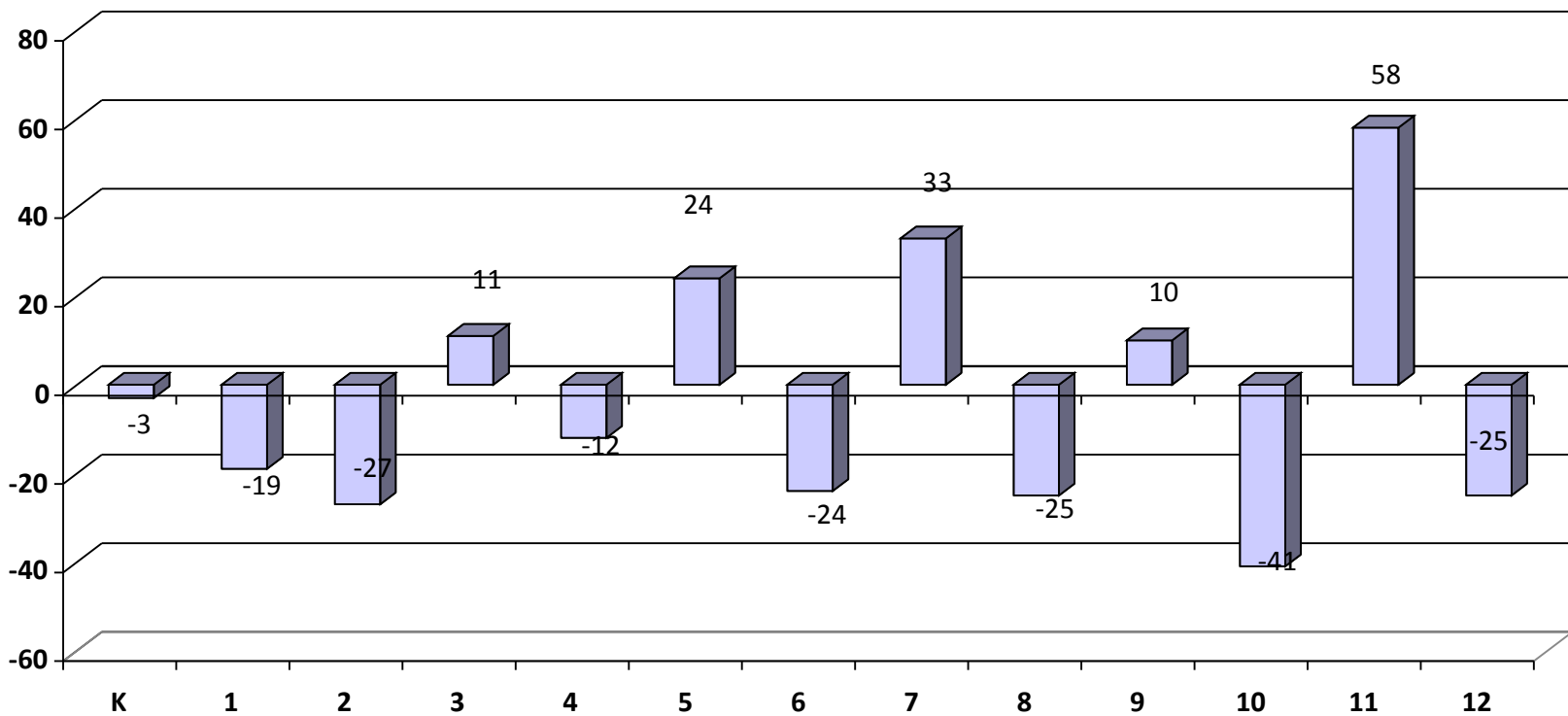
# 2017-18 Enrollment Projection by Grade

	2016-17	2017-18	2018-19	2019-20	2020-21	2021-22
<b>K</b>	358	355	347	349	342	336
<b>1</b>	383	364	361	353	355	348
<b>2</b>	424	397	377	374	366	368
<b>3</b>	433	444	416	395	392	383
<b>4</b>	446	434	445	417	396	392
<b>5</b>	434	458	445	456	428	406
<b>6</b>	464	440	465	451	463	434
<b>7</b>	434	467	443	467	454	466
<b>8</b>	454	429	461	438	462	449
<b>9</b>	468	478	452	486	461	486
<b>10</b>	514	473	483	457	491	466
<b>11</b>	440	498	459	468	443	476
<b>12</b>	442	417	472	435	444	420
<b>Total</b>	5,694	5,654	5,626	5,546	5,497	5,430

# 2016-17 Actual vs. 2017-18 Enrollment Projection by Grade



# 2017-18 Enrollment Change by Grade



# WADM Report

- The weighted average daily membership (WADM) projection shows a decline in student aid.
- Keep in mind the district's enrollment history also tends to decline from Oct. 1<sup>st</sup> to June 1<sup>st</sup>.

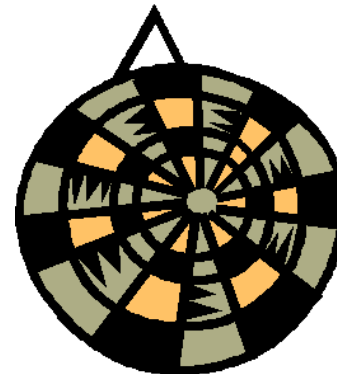
	2017-18		2018-19		2019-20		2020-21	
	Enroll	WADM	Enroll	WADM	Enroll	WADM	Enroll	WADM
<b>HK</b>	47	47	46	46	46	46	45	45
<b>K</b>	355	355	347	347	349	349	342	342
<b>Gr. 1-3</b>	1,205	1,205	1,154	1,154	1,122	1,122	1,113	1,113
<b>Gr. 4-6</b>	1,332	1,332	1,355	1,355	1,324	1,324	1,287	1,287
<b>Gr. 7-8</b>	896	1,075	904	1,085	905	1,086	916	1,099
<b>Gr. 9-12</b>	1,866	2,239	1,866	2,239	1,846	2,215	1,839	2,207
<b>ECSE</b>	106	106	103	103	104	104	102	102
<b>M.C.P.U</b>		11		9		23		15
<b>Total</b>	5,807	6,370	5,775	6,338	5,696	6,269	5,644	6,210



# Conclusion

---

- Uncertain economic factors make enrollment projections difficult.
- BHM's enrollment is projected to decline over the next three to five years.



5,654