

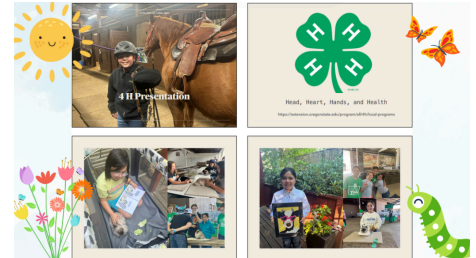
ALSEA SCHOOL DISTRICT BOARD REPORT

Name: Heather Shunk **Position:** Principal

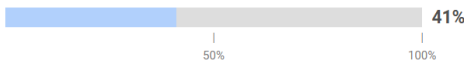
BOARD MEETING DATE: May 13, 2025



[Link for April 2025 Assembly Slide Deck](#) - Attendance, Welcoming New Students, Birthdays, Students of the Month, School Registration, Happenings in Each Class, and Exploratory Class, April character trait "HUMBLE". 4-H Presentation by 3rd Grade Student. *May character trait - IMAGINATIVE



Progress to Annual Typical Growth (Median)

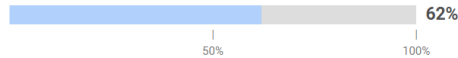


I-Ready Growth Data - Average for Entire School:

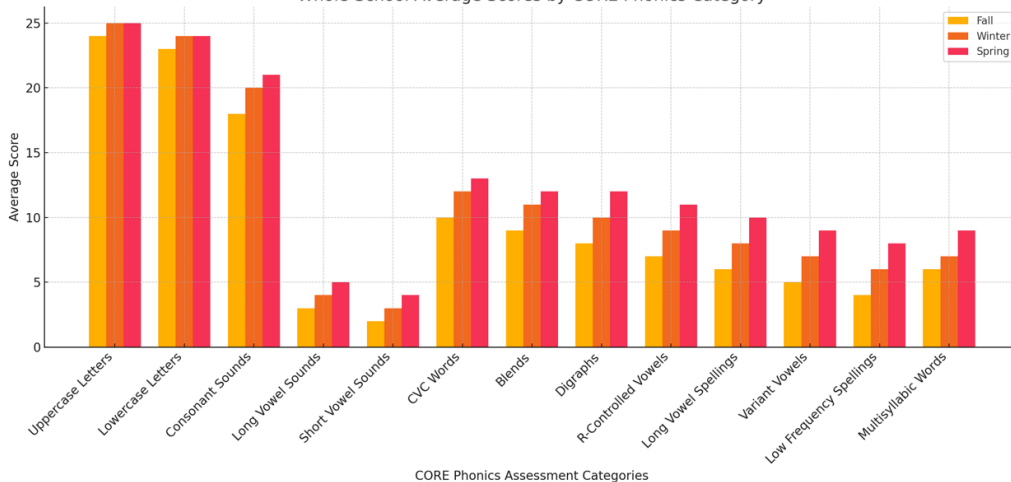
As we begin the third and final I-Ready diagnostic window, current data reflects that K–5 students have achieved 41% of their annual typical growth in Reading and 62% in Math, based on schoolwide median progress. While Math growth is on track, additional support in Reading remains a priority.

To boost student progress, we are encouraging at-home I-Ready usage and sharing tools with families to make independent practice more effective. This partnership with parents is key as we work together to help all students finish the year strong and meet their growth goals. Ongoing 1:1 tutoring and small group instruction occurs daily.

Progress to Annual Typical Growth (Median)



Whole-School Average Scores by CORE Phonics Category



Core Phonics - Foundational:

Across all grade levels, schoolwide CORE Phonics data shows consistent improvement in key foundational areas. Students demonstrated strong early mastery in letter naming (averaging 25/26 by Spring) and made notable gains in consonant sounds, short vowels, and CVC word reading throughout the year.

Progress was also seen in more complex areas like blends, digraphs, and R-controlled vowels, though categories such as multisyllabic words and low-frequency spellings remain areas for continued instructional focus. These insights will guide our planning for small group instruction, intervention targeting, and next year's professional learning priorities.

Preparing for next school year:

- Collaboration on workbooks that align with math and reading priority standards for students and parents to track their progress.
- Encouraging families to register early and save their spot for next school year.
- In person field trips.
- Decisions on school theme for 25-26, likely Grit or Perseverance.
- Platform and schedule analysis.