



2026-2027

Local Service Plan

Dr. Mark Angle-Hobson
Superintendent

**District
Office**
5465 S. Pacific Hwy.
Phoenix, OR 97535

**Douglas County
Regional Office**
90 NW Glenhart Ave.
Winston, OR 97496

**Grants Pass
Regional Office**
550 SW 6th St.
Grants Pass, OR 97526

**Klamath Falls
Regional Office**
2685 Foothills Blvd.
Klamath Falls, OR 97603

**Operations
Center**
101 N. Grape St.
Medford, OR 97501

Table of Contents



Introduction

WHO are we?	
Dear Community.....	1
Our Region	2
Our Board of Directors	3
Our Organization	4
Our Compass	5
Our Lexicon	6

Section I: Laying the Foundation

WHAT guides our work?	
LSP Scope & Requirements	7
LSP Timeline	8
Financial Summary	9

Section II: Local Service Plan

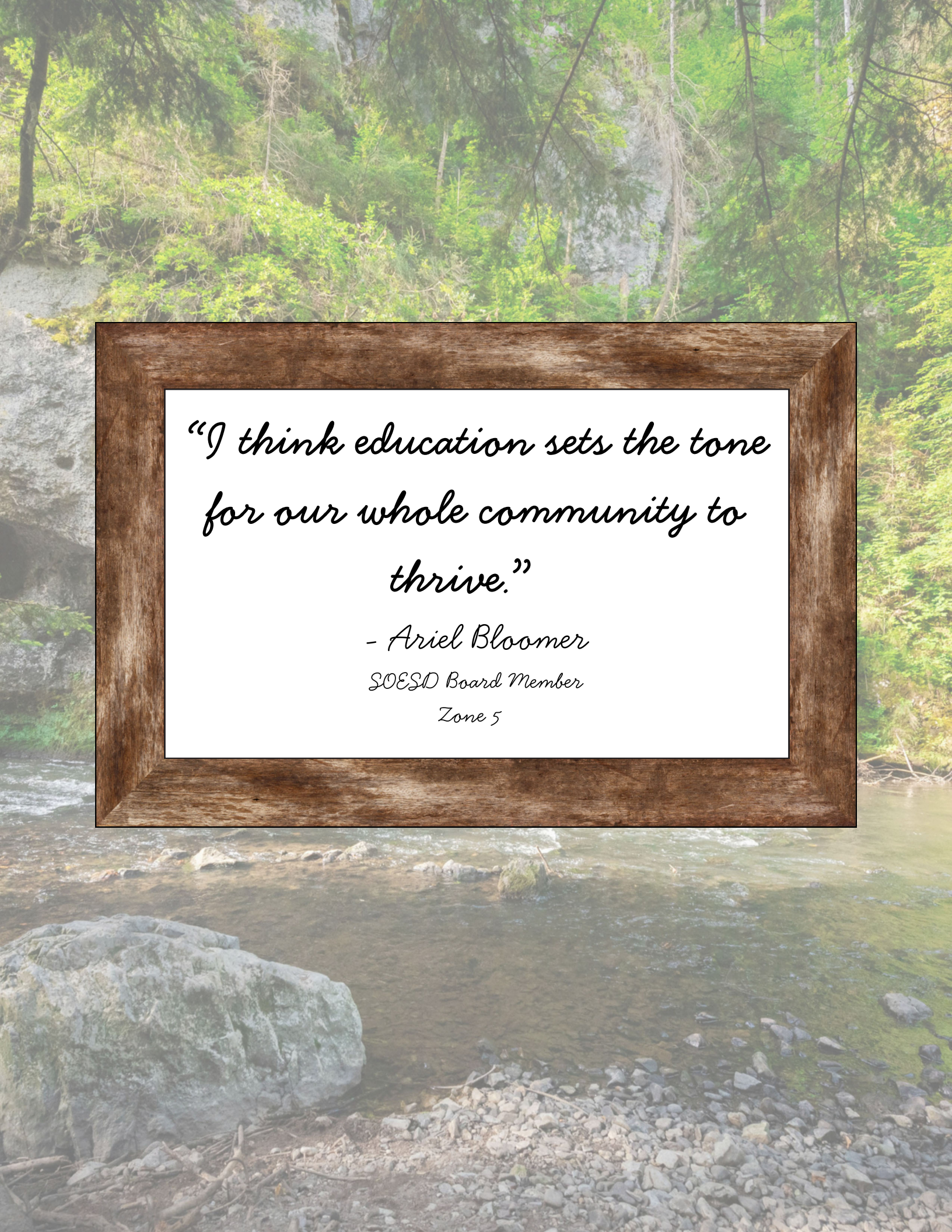
WHAT do we do?	
Division Funding Overview.....	11
Administration Division.....	12
School Improvement Division.....	14
Student Services Division.....	17
Technology Division.....	20

Section III: Student Success Act

Student Success Act Comprehensive Support Plan	22
---	----

Close Appendix

Contact Us!	30
--------------------------	----

The background is a lush green forest scene with a stream flowing through it. The water is clear, revealing rocks and pebbles at the bottom. The banks are covered in dense foliage and trees. A large, light-colored rock is visible in the lower-left foreground. A thick, dark brown wooden frame is superimposed over the center of the image, containing the text.

*"I think education sets the tone
for our whole community to
thrive."*

*- Ariel Bloomer
SOESD Board Member
Zone 5*

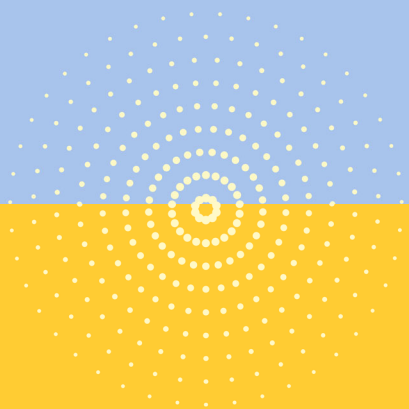


Introduction



WHO

a r e w e ?



Dear Community

Dear Board Members, Superintendents and Constituents:

Southern Oregon Education Service District (SOESD) serves children, families, educators, and communities within the ancestral homelands of the Shasta, Takelma, Latgawa, Klamath, Modoc, and Yahooksin-Paiute peoples. As the largest geographic region within Oregon's 19-ESD network, our 13 component districts span Jackson, Josephine, and Klamath Counties—an area roughly the size of the state of Massachusetts. Beyond our tri-county region, SOESD also partners to provide select services in Douglas and Lake Counties.

This Local Service Plan (LSP) outlines the services available across our region, the process and timeline through which component districts select those services, and a snapshot of the budget and staffing required to deliver them.

At the heart of this work is a people-first commitment. By centering our efforts on relationships and responsiveness, SOESD ensures that our specialized services support children, families, and educators in ways that allow them, and our own staff, to thrive.

In addition to the LSP, this document includes the Student Success Act (SSA) Comprehensive Support Plan (CSP), which assists districts with the development and implementation of their Student Investment Account (SIA) plans. Together, these plans reflect our region's shared dedication to meaningful, equitable, and sustainable improvement in service to all students.

As we look ahead, I am inspired by the strength and collaboration that define Southern Oregon. The challenges before us are real, but so are our collective talents, creativity, and compassion. Together, with clarity of purpose and shared commitment, we will continue to innovate, build belonging, and deliver exceptional services that make a lasting difference for the students and communities we serve.

Respectfully,

A handwritten signature in blue ink that reads "Mark Angle-Hobson" with "ED.D." written in smaller letters below the name.

Mark Angle-Hobson, Ed.D.
Superintendent

Our Region

Southern Oregon Counties: Cities & Component Districts

Josephine County

Grants Pass
Cave Junction
Selma
Williams
Kerby
O'Brien
Takilma
Redwood
New Hope
Wolf Creek

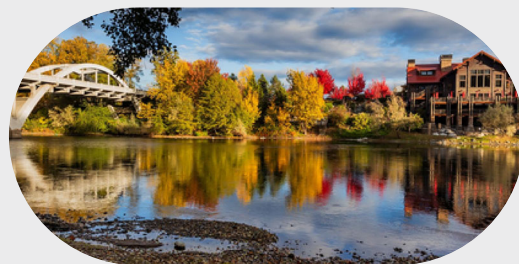


2 Districts
9,911 Students

1,641 square miles

Three Rivers School District
Grants Pass School District

18 Schools - 4,440 Students
11 Schools - 5,726 Students



Jackson County

Jacksonville
Medford
Central Point
Ashland
Eagle Point
Gold Hill
White City
Phoenix
Talent
Shady Cove
Rogue River
Butte Falls
Prospect



9 Districts
28,493 Students

2,802 square miles

Medford School District
Eagle Point School District
Central Point School District
Ashland School District
Phoenix-Talent School District
Rogue River School District
Prospect School District
Butte Falls School District
Pinehurst School District

25 Schools - 13,786 Students
11 Schools - 4,066 Students
9 Schools - 4,773 Students
9 Schools - 2,549 Students
6 Schools - 2,230 Students
4 Schools - 1,071 Students
2 Schools - 233 Students
2 Schools - 119 Students
1 School - 8 Students



Klamath County

Klamath Falls
Chiloquin
Bonanza
Sprague River
Bly
Keno
Beatty
Merrill
Chemult
Malin
Gilchrist
Crescent



2 Districts
9,713 Students

6,136 square miles

Klamath County School District
Klamath Falls City Schools

22 Schools - 7,000 Students
9 Schools - 2,723 Students



Our Board of Directors



Ana Mannenbach - Chair
Zone 9 - Butte Falls/Eagle Point/Prospect
2023-2027



Richie Owens - Vice Chair
Zone 7 - Medford
2025-2029



Ariel Bloomer
Zone 5 - Ashland/Phoenix-Talent/Pinehurst
2025-2029



Rebecca Mueller
Zone 6 - Medford
2025-2029



Mary Barton
Zone 8 - Central Point/Rogue River
2025-2029



Rhonda Lawrence
Zone 2 - Three Rivers
2025-2029



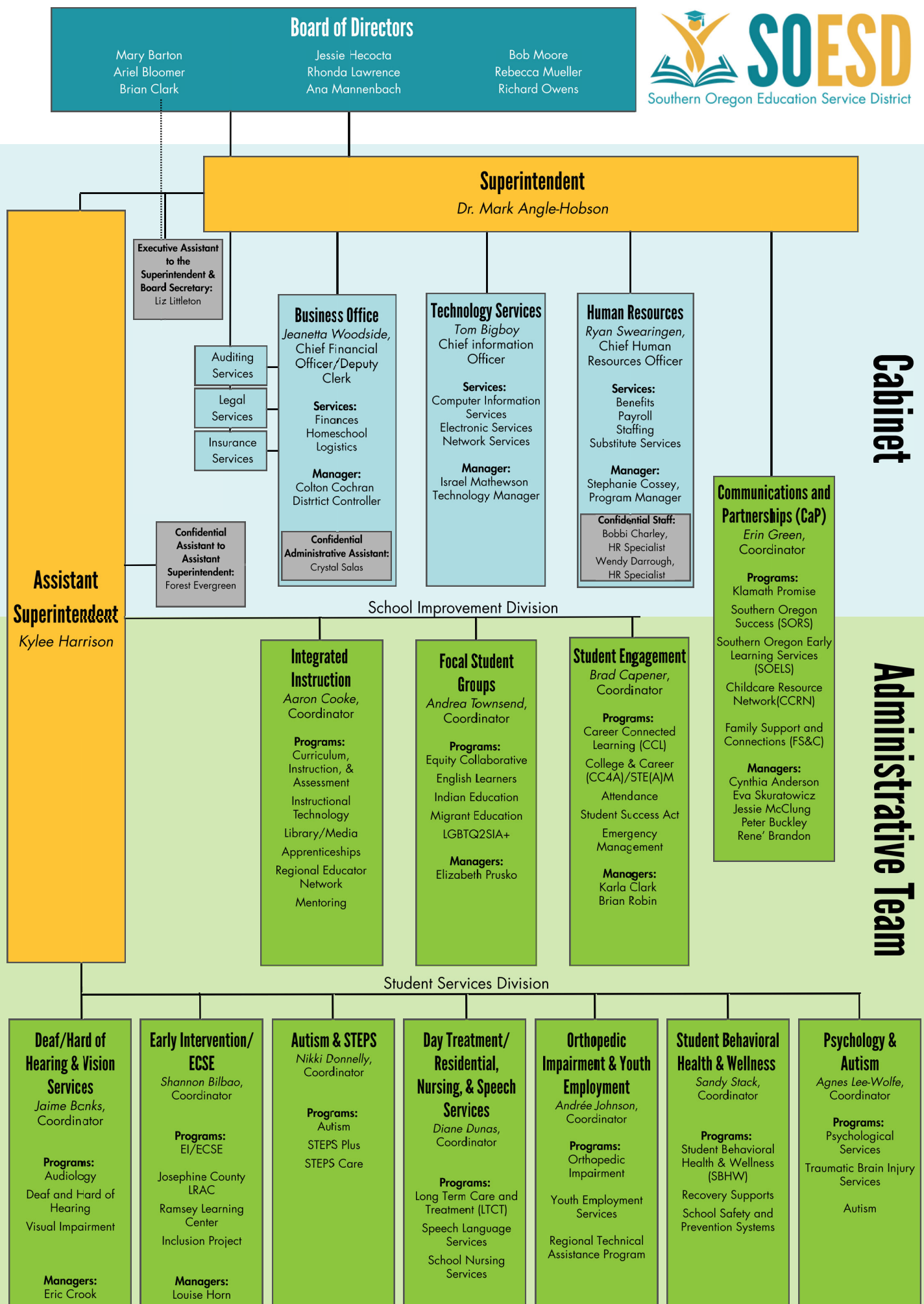
Jessie Hecocta
Zone 4 - Klamath Falls
2023-2027



Brian Clark
Zone 1 - Grants Pass/Three Rivers
2025-2029



Robert "Bob" Moore
Zone 3 - Klamath County
2023-2027



Our Compass

Across Oregon, we are navigating a time of economic uncertainty that touches every corner of our education system. Budgets are tightening, needs are growing, and it's natural for all of us to feel the weight of those challenges. Yet, moments like this also remind us why our partnership matters most.

When ESDs and component districts work together, we create efficiencies and solutions that none of us could achieve alone. Collaboration allows us to pool expertise, share resources, and expand opportunities for students and educators across our region. It transforms scarcity into creativity and challenge into possibility.

At SOESD, we are committed to finding new ways to stretch every dollar while keeping people at the center of our decisions. The strength of our regional network—built on trust, communication, and shared purpose—remains one of our greatest assets.

As part of that commitment, we have implemented several initiatives to strengthen our systems, modernize our operations, and enhance transparency. Since July, SOESD has launched a refreshed website and inclusive letterhead to better reflect our region and improve communication; restructured our administrative team to increase collaboration and reduce costs; and created new opportunities for engagement through the Blueprint & Beyond newsletters, Coffee with Cabinet, and a virtual question box. We have also onboarded new leadership and board members, completed a policy rewrite, and initiated an inclusive strategic planning process to guide our shared work for the years ahead.

These efforts, paired with facility improvements, technology upgrades, and a focus on human-centered culture, are designed to ensure that every investment we make directly supports the students, families, and educators we serve.

As we look ahead, we are confident that by staying connected, transparent, and united around our shared mission, we will not only weather this period of uncertainty but emerge stronger and more aligned in our service to children and families.

Thank you for your partnership and your continued leadership in your schools and communities. Together, we can ensure that Southern Oregon remains a place where collaboration drives innovation and every student has the opportunity to thrive.



Our Lexicon

1. Agency

Southern Oregon Education Service District is the **agency**. An agency is the entire organization — encompassing all departments, programs and services within SOESD.

2. Divisions

SOESD is an agency made up of four **divisions** that meet our statutorily required obligations: Administration, School Improvement, Student Services and Technology. Together, these divisions support our region through integrated services, programs, and partnerships.

3. Departments

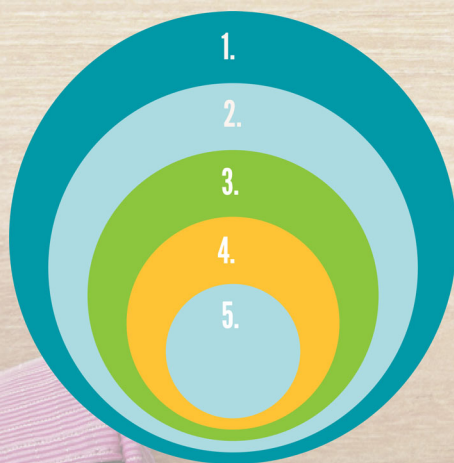
Within each division are **departments**. At SOESD, departments include areas such as Early Childhood Services, Focal Student Groups, Student Engagement, Student Behavioral Health and Wellness and more. Departments focus on specific areas of service and operations that contribute to the agency's overall mission.

4. Programs

Each department oversees specific **programs**. These programs deliver specialized support to meet the diverse needs of our students and communities. As an example, included within the Focal Student Groups department are Indian Education and Migrant Education (and others). Some programs, like Southern Oregon Early Learning Hub, are governed by separate entities, with SOESD serving in a fiscal backbone or support role.

5. Projects

Projects are specific bodies of work within programs that help achieve specific goals. They turn program plans into real actions and results.



A wooden frame with a natural grain texture surrounds a white rectangular area containing text. The background of the entire image is a low-angle shot of a bamboo forest, with numerous vertical bamboo stalks reaching towards a bright, green canopy of leaves.

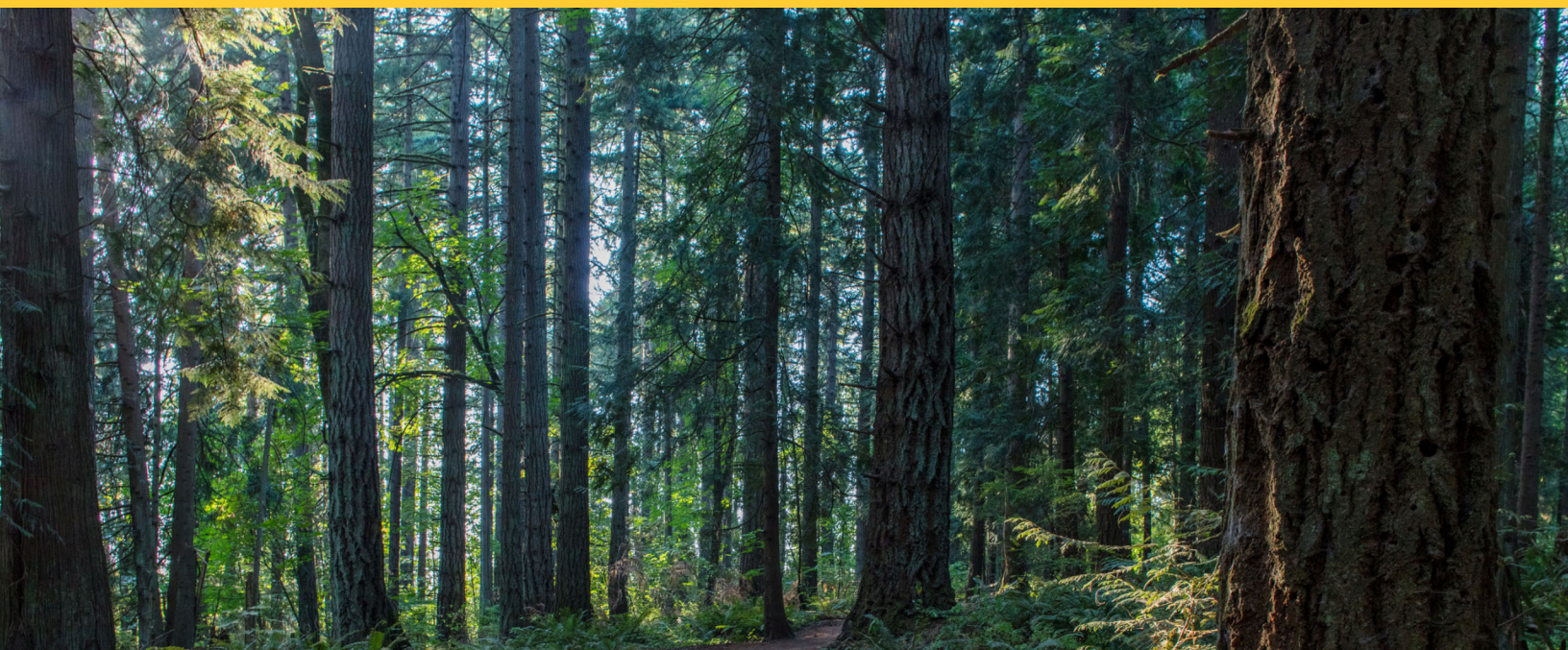
*“What I love most about my
work at SOESD is the
opportunity to collaborate with
key leaders from across our
beautiful Southern Oregon
landscape, embracing the unique
culture and perspective of the
communities they serve. The
strength of our unified efforts
reflects in the resources and
opportunities brought forward
within our region, impacting the
students, families, and teachers
we serve.”*

*- Kylee Harrison
SOESD
Assistant Superintendent*



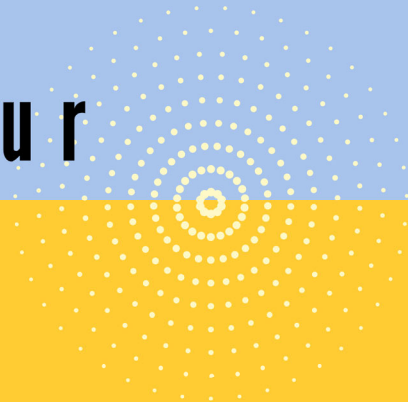
Section I:

Laying the Foundation



WHAT

guides our
work?



LSP Scope & Requirements

Local Service Plan: Scope



Local Service Plan:

Adoption & Approval Requirements

ORS 334.175

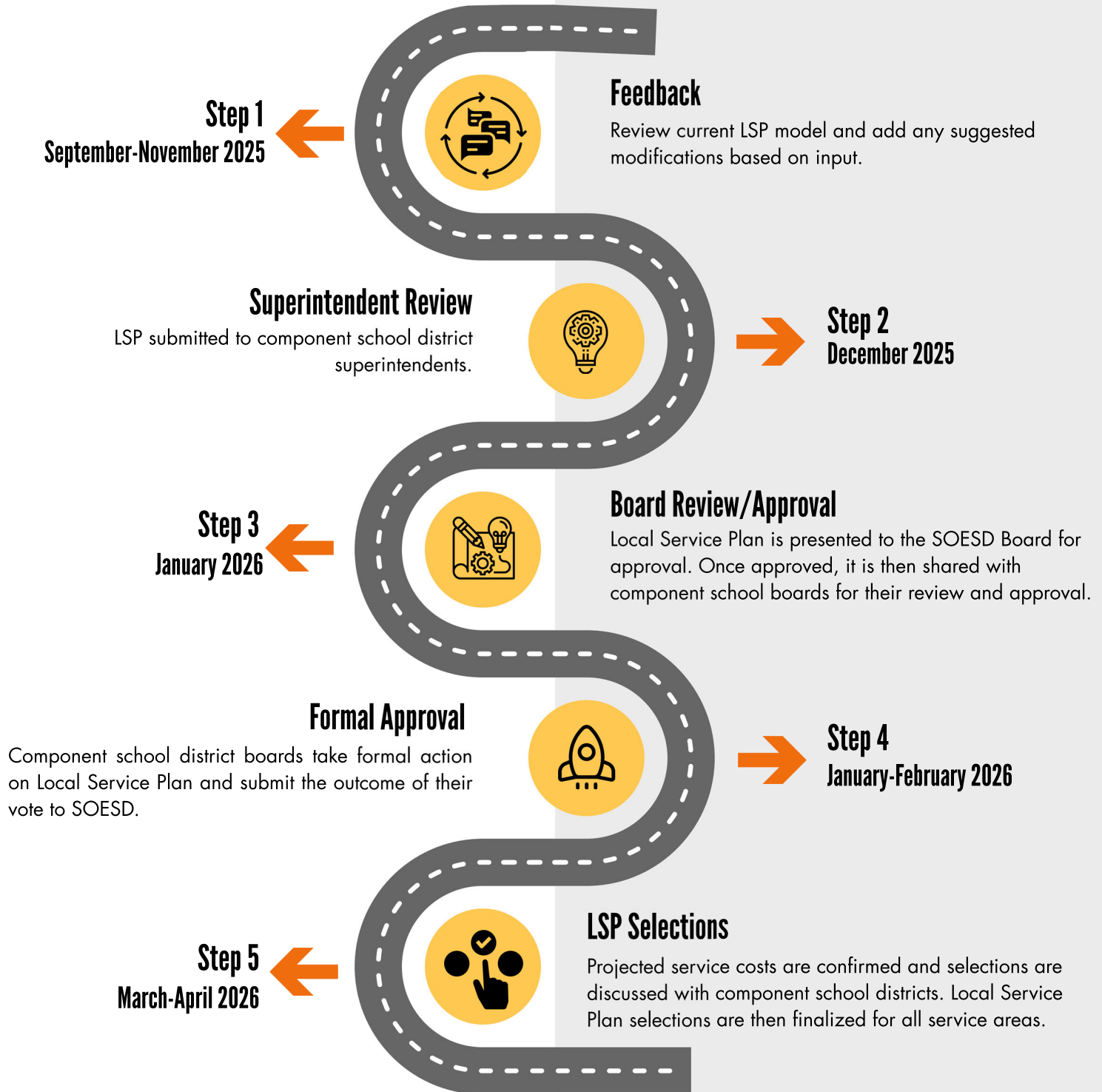
Each year, an Education Service District's (ESD) Local Service Plan must be:

1. Adopted by the ESD Board
2. Approved on or before March 1 by a resolution of two-thirds of the component school districts that collectively serve a majority of the pupils within the ESD's region.

**While not statutorily required, SOESD's practice is for the first draft of the Local Service Plan—presented to superintendents before winter break—to reflect feedback gathered from various constituent groups throughout the fall.*



LSP Timeline



Financial Summary

State School Fund

4.5% of the State School Fund (SSF) is set aside to fund Oregon's 19 ESDs. SOESD receives approximately 9% of this amount based on the region's proportional ADM.

The ESD funding formula includes property taxes and state income taxes.



4.5%

For the 2025-26 fiscal year, SOESD has budgeted \$15,103,846 from state sources and \$15,254,434 from local property taxes. These combined amounts equal \$30,358,280 and, when added to the remaining budgeted revenues, total \$32,152,993 of general fund resources.

State School Fund Expenditure Requirements

State law requires ESDs to expend at least 90% of their State School Fund revenue for services approved by component districts in the Local Service Plan.



90%

No more than 10% is retained to support SOESD's infrastructure and operations.



Financial Summary (Cont.)

Overview

Southern Oregon ESD offers a range of services to our component districts, organized into the four core service areas outlined in ORS 334.175. We maintain strong, collaborative relationships with our districts, reviewing services annually to meet evolving needs. The 2026–2027 Local Service Plan includes all required core services, plus additional services identified by our districts.

Agreements

District Allocations: 90% of State School Fund goes directly to districts based on last year's ADMr.

Essential Core: About 5% supports small-districts, STEPS Plus classrooms, and required ESD leadership in school improvement, special education, and technology.

Menu Services: Districts may utilize their allocations to choose from a menu of services, including administration, school improvement, student services, and technology. Some selections are yearly; others are on a three-year rolling plan.

Billing: Services are billed at actual cost at year-end. Unused funds are returned; extra use is billed.

Service Commitment: Districts agree to use at least 30% of their allocation for SOESD services to ensure quality and stability.

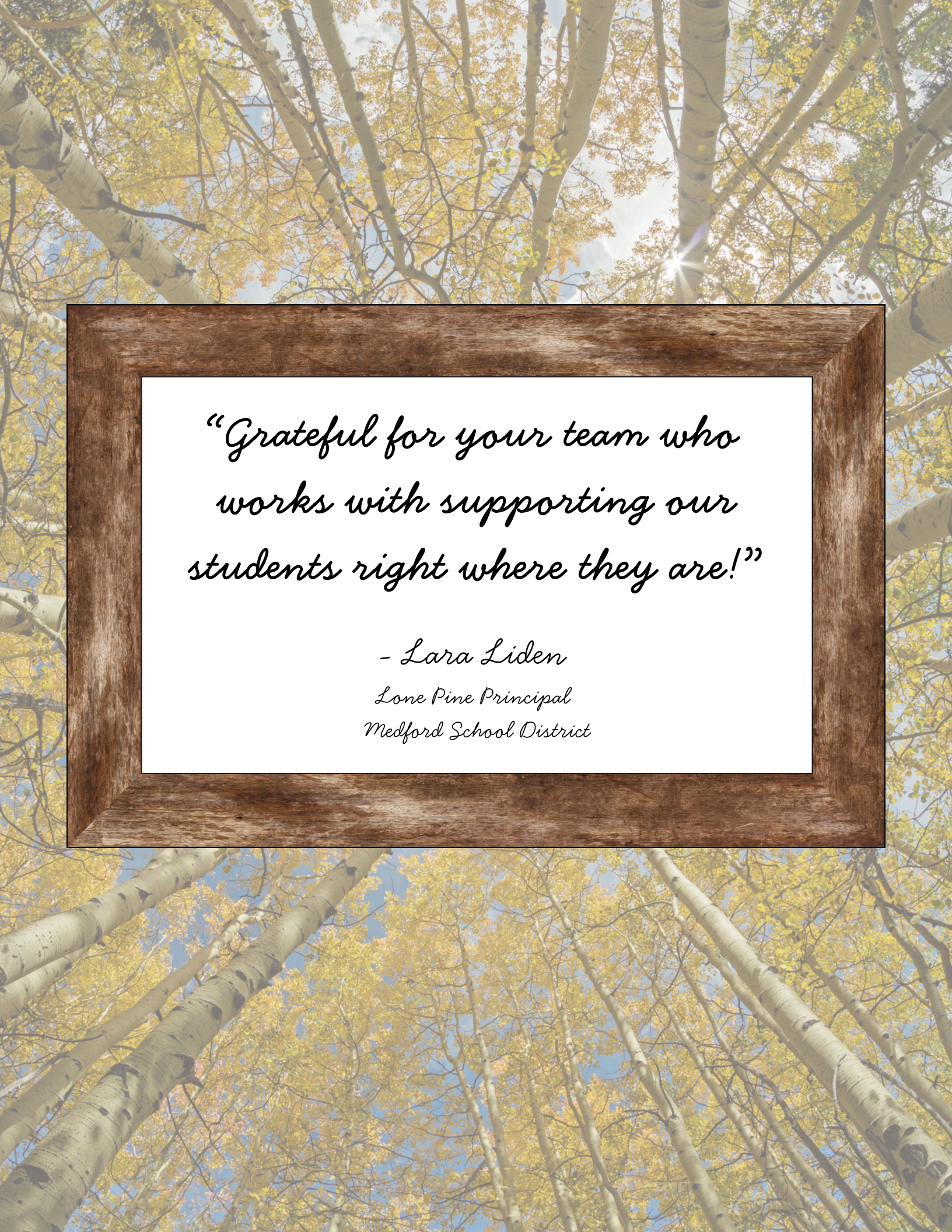
Extra Agreements: Additional agreements support needs beyond base services.

Optional Services: Fee-for-service opportunities like workshops and other programs are available.

Entrepreneurial Fees: Fees for non-district organizations support programs benefiting our districts.

90% of
SOESD's
share of the
State
School Fund





*“Grateful for your team who
works with supporting our
students right where they are!”*

*- Lara Liden
Lone Pine Principal
Medford School District*



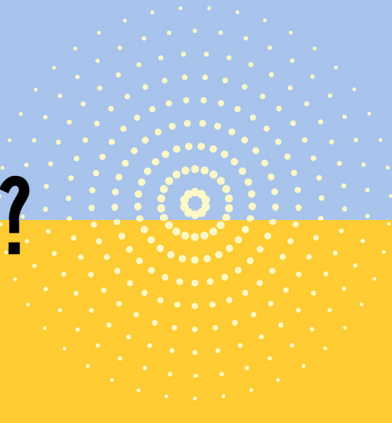
Section II:

Local Service Plan



WHAT

do we do?



Division Funding Overview

**Based on 2025-26 Budget*

Service	Page	Budget	LSP-Funded FTE	Non LSP-Funded FTE
Administration	12	\$1,415,932	5.25	13.5
School Improvement	14	\$1,644,614	6.8	56.5
Student Services	17	\$12,759,535	89.5	105.5
Technology	20	\$2,304,242	13.75	0



Administration Division

Supporting Schools. Empowering People.
Strengthening Communities.



Contact
us

At SOESD, our Administration Division exists to make the work of schools and educators smoother, more equitable, and more connected. Every day, we partner with districts so students can access opportunity, staff have the tools and guidance they need, and leaders can focus on what matters most—teaching, learning, and helping communities thrive. From managing payroll and substitutes, to coordinating civil rights compliance, to delivering materials across districts, our work is guided by one principle: people first. When staff, families, and students are supported, the whole community flourishes.



administration@soesd.k12.or.us



soesd.k12.or.us



(541) 776-8590

Administrative Leadership

Mark Angle-Hobson	Ryan Swearingen
Kylee Harrison	Stephanie Cossey
Jeanetta Woodside	Tom Bigboy
Colton Cochran	Erin Green

Administration, Business Services, & Human Resources

*Counties listed represent service utilization in 2025–26

Services:



Civil Rights Coordination: SOESD can serve as a district civil rights coordinator under HB 2881, handling compliance, training, prevention, and discrimination investigations with private investigators. *Jackson, Josephine, & Klamath Counties*

Courier: The Courier handles pick-up and delivery of materials and equipment from the STEM High Tech Tools Lending Library and Electronics Repair program, as well as inter- and intra-district mail. *Jackson, Josephine, & Klamath Counties*

Medicaid Billing: School districts in the Medicaid Billing program are reimbursed through Medicaid Administrative Claiming (MAC), which covers K–12 staff work already being performed. *Jackson, Josephine, & Klamath Counties*

Substitute Management: SOESD provides recruiting, hiring, training, assignment, payroll, and substitute management for licensed teachers using the Absence Management System to support districts during staff absences.
Jackson & Josephine Counties

Services Provided at No Additional Charge



Job-Alike Collaboration and Support:

Regular regional meetings convened by SOESD leadership with job-alike groups to enhance educational opportunities, foster collaboration, and increase collective efficacy for staff and students across the region.

- Superintendents Meeting
- Business Managers Meeting
- Human Resources Meeting
- Communications Managers Meeting

Jackson, Josephine, & Klamath Counties

Home Schooling: Centralized registration for students ages 6–18 who live in Jackson, Josephine, or Klamath counties and are not enrolled in a public or private school.

Jackson, Josephine, & Klamath Counties



School Improvement Division

Empowering Learners, Leaders, and Communities



School Improvement Services partners with schools to help every learner thrive—from early learning through post-secondary success. Our work connects classrooms and communities by coordinating regional collaboration, promoting kindergarten readiness, and managing grants that open doors to meaningful career pathways. We provide professional learning and technical assistance that strengthen instruction, foster belonging and wellness, and remove barriers to learning. Through these efforts, we help schools nurture achievement, improve attendance, and support every student in reaching graduation ready for the future they choose.

Contact Us



school_improvement@soesd.k12.or.us



soesd.k12.or.us/school_improvement



(541) 776-8590

School Improvement Coordinators:

Aaron Cooke
Andrea Townsend
Brad Capener

School Improvement Services

**Counties listed represent service utilization in 2025–26*

Programs & Services:



Career Technical Education (CTE): The Career and Technical Education (CTE) program connects students to real-world careers by aligning learning with industry needs. The team facilitates the Federal Carl D. Perkins consortium grant and the Southern Oregon CTE Consortium (SOCTEC), partnering with schools, colleges, and employers to provide hands-on experience, college credit, and career pathways to success. *Jackson, Josephine, & Klamath Counties*

College and Career/STEAM Hub: College and Career Services connects schools, higher education, industry, and community partners to provide hands-on, career-focused learning, supported by dual credit, CTE, and the regional STEAM Hub. Grant funding supports these programs, including STEAM specialists who support educators with STEM integration and co-teaching, to expand access and opportunities across the region. *Jackson, Josephine, & Klamath Counties*



Curriculum, Instruction, and Assessment: SOESD partners with schools to enhance teaching and learning through consultation, professional development, and aligned curriculum, helping educators create engaging classrooms where every student can thrive. *Jackson, Josephine, & Klamath Counties*

Division 22 Library Services: SOESD employs TSPC-licensed librarians who provide virtual or hybrid support to district library staff, assisting with Division-22 compliance, resources, cataloging, and an annual regional library symposium. *Jackson, Josephine, & Klamath Counties*

Mentoring New Teachers and Administrators: SOESD mentors new teachers and administrators in their critical first years, supporting effective instruction, assessment, and culturally responsive teaching. By strengthening educators early, the program boosts teacher retention and student success. *Jackson, Josephine, & Klamath Counties*



Migrant Education/Indian Education/EL/LGBTQ2SIA+: Districts can join consortia that provide access to federal and state grants supporting educational and culturally related needs. The Title IC-funded Migrant Education Program offers academic, social-emotional, and family support—including bilingual preschool, after-school and summer programs, and mental health and graduation assistance. Funded by the Student Success Grant, LGBTQ2SIA+ services support GSA clubs, the Unity Conference, inclusive literature, and safe-space initiatives. Title VI-funded Indian Education provides cultural enrichment, academic support, and educator training. English Learner (EL) services offer professional development, technical assistance, and Title III grant management to ensure equitable learning for multilingual students. *Jackson, Josephine, & Klamath Counties*

Regional Achievement Collaboratives: Southern Oregon Success in Jackson and Josephine Counties and Klamath Promise in Klamath County are the only regional organizations that connect education, health care, mental health care, human services, workforce development and public safety to support student success from early learning through career readiness. Through training on ACEs and trauma-informed practices, as well as workgroups focused on Kindergarten readiness, navigation of services and alignment of resources, these initiatives strengthen communities, and engage partners to promote student achievement.

Jackson, Josephine, & Klamath Counties



School Improvement Services (Cont.)

Services Provided at No Additional Charge

Child Care Resource Network: The Child Care Resource Network supports the Southern Oregon Early Learning Hub by improving child care quality through QRIS, provider trainings, business and consumer education, and family support connections. *Jackson & Josephine Counties*

Curriculum Directors Meetings: SOESD facilitates meetings throughout the year of area curriculum directors to enhance educational opportunities for students in the region. *Jackson, Josephine, & Klamath Counties*

Family Support and Connections (FS&C): Family Support and Connections is a statewide program that pairs families with local advocates to overcome barriers, build personalized plans, and support long-term success. *Jackson & Josephine Counties*

Focal Student Groups Regional Meeting: A meeting for coordinators and district leaders in EL, Migrant Education, and Equity to collaborate, discuss new ODE policies and changes, share supports, explore implementation strategies, and develop solutions together. *Jackson, Josephine, & Klamath Counties*

Grow Your Own (GYO): Encompasses aid for cadet teachers, upskilling of current educators, and the Registered Apprenticeship and Teaching Program. These programs are designed as supports for novice educators and pathway creation for educational licensure and certification. *Jackson, Josephine, & Klamath Counties*




Regional Educator Network: SOESD coordinates SOREN to support educators throughout their careers, promoting safe, equitable classrooms through sustainable, locally responsive professional learning. *Jackson, Josephine, & Klamath Counties*

Student Success Act: Under the Student Success Act, SOESD provides districts with technical assistance and professional learning, collaborating with teams to enhance initiative implementation and impact. *Jackson, Josephine, & Klamath Counties*

Southern Oregon Early Learning Services: The Early Learning Hub broadens resources for underserved children and families, aligning programs with their needs through collaboration with schools, health providers, and community partners. *Jackson, Josephine, & Klamath Counties*

Suicide Prevention and Threat Assessment: SOESD meets districts and communities where they are in supporting suicide prevention and response through a range of services, including threat assessment training and technical assistance, support and leadership on county-level Threat Assessment teams, suicide prevention training, technical assistance, and systems development, as well as suicide postvention/response training and direct support through the regional Flight Team. *Jackson, Josephine, & Klamath Counties*





*“My mentor helped me find joy
and love in teaching little people.”*

*-Teacher + Mentee,
SOREN Mentoring Project*

Student Services Division

Supporting Every Learner, Every Step of the Way



The SOESD Student Services Division supports every learner by providing evaluation, consultation, and direct special education services tailored to students with disabilities through an Individualized Education Program (IEP) and/or an Individual Family Service Plan (IFSP). With programs available across Jackson, Josephine, and Klamath counties—and select services in Douglas and Lake counties—SOESD empowers students to reach their full potential. Additionally, the OR Project curriculum extends this impact globally, supporting children who are visually impaired or blind around the world.

*Contact
us*



student_services@soesd.k12.or.us



soesd.k12.or.us/special_education



(541) 776-8590

Student Services Coordinators:

Andrée Johnson
Diane Dunas
Jaime Banks

Nikki Donnelly
Sandy Stack
Shannon Bilbao

Student Services

*Counties listed represent service utilization in 2025–26

Programs & Services:



Audiology: Comprehensive hearing evaluations for children from early childhood through high school including a full range of diagnostic assessments and hearing assistive technology resources. *Jackson, Josephine, & Klamath Counties*

ASL Interpreting & Educational Assistance with Basic Sign Skills Services: ASL Interpreters and Educational Assistants with Basic Sign Language provide in-class and extracurricular support across the 5-county region, removing communication barriers so DHH students can fully access their environment, connect with peers and staff, and participate inclusively in school life. *Jackson, Josephine, Klamath, Douglas, & Lake Counties*

Assistive Technology: SOESD offers a library of assistive technology for loan and provides support in researching and obtaining tools to meet the needs of learners across Southern Oregon. *Jackson, Josephine, & Klamath Counties*

Autism Services: SOESD's Autism Services team partners with educators, families, and districts to support students with Autism through classroom consultation, professional development, and collaborative problem-solving. *Jackson, Josephine, Klamath, Douglas, & Lake Counties*



Behavioral and Mental Health: Provides multi-tiered mental health and behavioral support for students, along with training, consultation, and coaching for staff to promote wellbeing, self-regulation, and behavioral success. *Jackson, Josephine, & Klamath Counties*

Braille/Compensatory Services: Provide Braille, adapted material production and compensatory services to support children who are blind, low vision or DeafBlind, from birth through age 21. *Jackson, Josephine, Klamath, Douglas, & Lake Counties*

Evaluation Services - Early Intervention (EI) /Early Childhood Special Education (ECSE): EI and ECSE in Josephine County provide evaluations for children 0-5 and support services for families and children with special needs. *Josephine County*

Services Provided at No Additional Charge



Early Intervention & Early Childhood Special Education Services: Early Intervention (0–3) and Early Childhood Special Education (3–5) support students with developmental delays or disabilities, helping them build foundational skills, improving school readiness, and fostering strong partnerships with families and districts. *Josephine County*



Long Term Care and Treatment (LTCT): LTCT provides education for students placed in day or residential treatment programs, offering a therapeutic environment where children develop the skills and behaviors needed to thrive in non-institutional settings. *Jackson, Josephine, & Klamath Counties*

Regional Crisis Response/Flight Team: SOESD's Flight Team provides timely, trauma-informed crisis support to schools, assisting students and staff with grief, communications, and coordination with outside agencies to help communities navigate difficult events safely and supported. *Jackson, Josephine, & Klamath Counties*

Regional Inclusive Services for Low Incidence Disabilities: Serving as ODE's Region III contractor for Southern Oregon, SOESD provides special education services to children ages birth through 21 who experience deafness or hard of hearing, visual impairment, orthopedic impairment, autism, and traumatic brain injury across five counties. *Jackson, Josephine, Klamath, Douglas, & Lake Counties*



Student Services

Programs & Services:



Oregon Project for Visually Impaired and Blind Preschool Children (OR Project): The OR Project is a comprehensive assessment and curriculum for children ages 0–6 who are blind or visually impaired. *Jackson, Josephine, Klamath, Douglas, Lake Counties, & Available Worldwide*



Orthopedic Impairment Services: Occupational and Physical Therapists provide evaluation, consultation, and direct support to help students with orthopedic impairments fully access their learning environments. *Jackson, Josephine, Klamath, Douglas, & Lake Counties*

Physical and Occupational Therapy (PT & OT): Physical therapy supports postural and gross motor skills such as head control, sitting, and balance, while occupational therapy focuses on fine motor skills like grasping, manipulating, and coordinating two-handed activities. *Jackson, Josephine, & Klamath Counties*

Psychological Services: School Psychologists offer consultation for educators and families, along with evaluation and intervention services to support students' learning and wellbeing. *Jackson, Josephine, & Klamath Counties*

School Nursing Services: School nurses support students' health needs, from chronic conditions to specialized care, helping districts ensure safety, wellbeing, and compliance with state regulations. *Jackson & Josephine Counties*

Special Education Automation Software (SEAS): A fully web-based special education management system that helps districts efficiently manage IEPs, timelines, Medicaid claims, assessments, and other key components of special education programs. *Jackson, Josephine, & Klamath Counties*

Speech and Language Services: Provides direct and consultative support through evaluations, IEP collaboration, therapy, and co-teaching to strengthen students' communication, language development, and verbal fluency. *Jackson, Josephine, & Klamath Counties*



STEPS CARE: Serves students ages 5–21 with diverse and significant needs across learning, communication, movement, and health, including intellectual and developmental disabilities, orthopedic and neurological differences, and complex medical needs—through individualized instruction and supports that promote access, engagement, well-being, and independence. *Jackson & Josephine Counties*

STEPS Plus: Serves a distinct population of students who require intensive support for regulation, communication, and skill development, supported by robust environmental, instructional, and sensory/regulation strategies and a high adult-to-student ratio to access learning. *Jackson & Josephine Counties*

Services Provided at No Additional Charge

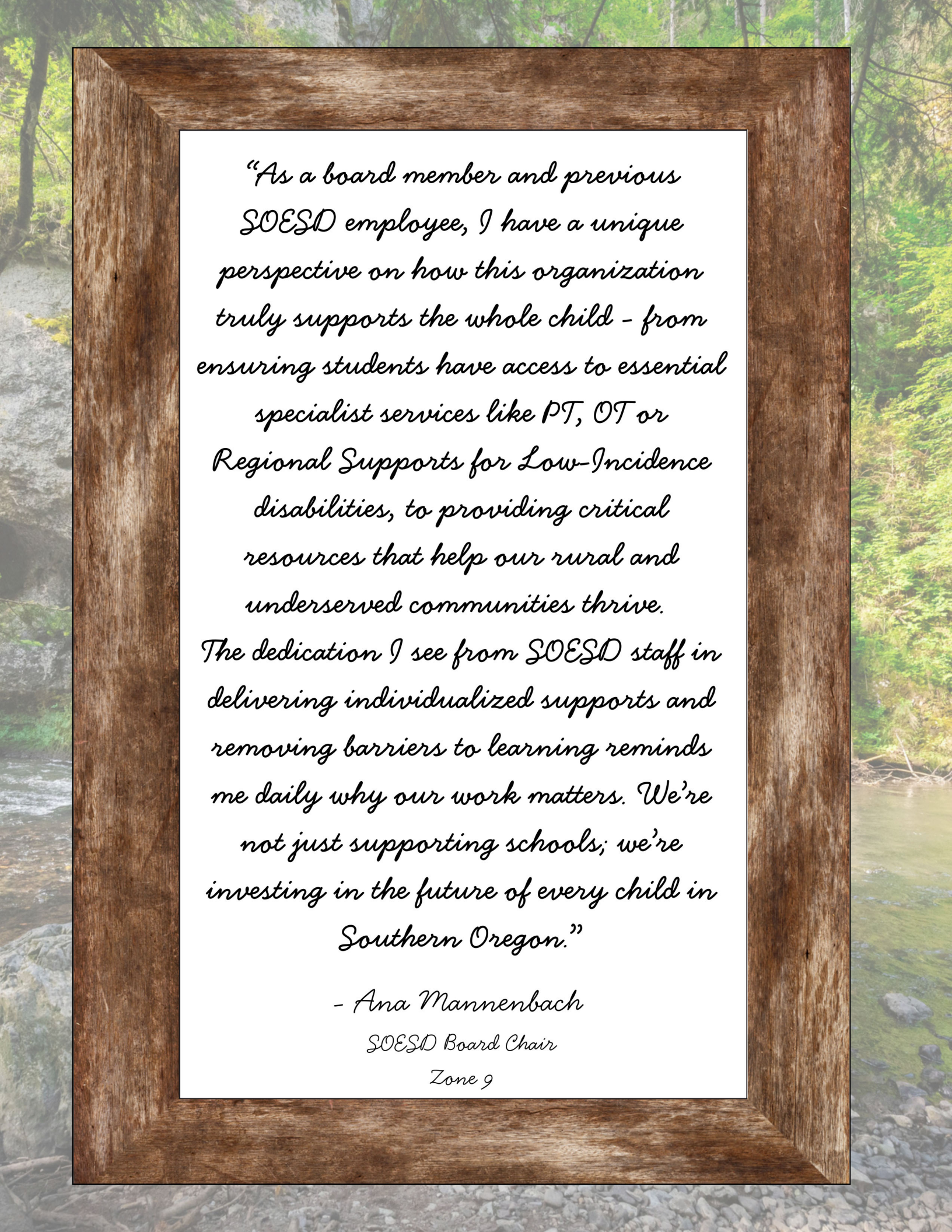
Regional Technical Assistance Provider (RTAP): RTAP supports the understanding, development and delivery of high quality IEPs and other legally required Special Education processes. *Jackson, Josephine, & Klamath Counties*

Special Education Directors Meetings: SOESD hosts regular meetings for special education directors to share best practices, resources, and collaborate on solutions to support students and schools. *Jackson, Josephine, & Klamath Counties*

Substance Use and Addiction Recovery Services: This pilot program strengthens the region's capacity to support students with co-occurring behavioral health needs by providing school-based screening, early intervention, treatment, and recovery services for substance use and mental health concerns. *Jackson, Josephine, & Klamath Counties*

Transition Network Facilitator – Region V: The Transition Network Facilitator helps improve employment services for students with disabilities by coordinating Vocational Rehabilitation and local education agencies under the Workforce Innovation and Opportunity Act. *Jackson, Josephine, & Klamath Counties*

Youth Employment Services: Serves students ages 14–21 with disabilities eligible for special education, preparing them for employment or career-focused post-secondary education and training. *Jackson, Josephine, Klamath, Douglas, & Lake Counties*

The image features a rustic wooden frame with a thick, natural wood grain border. Inside the frame, on a white background, is a handwritten-style quote in black ink. The quote is centered and reads: "As a board member and previous SOESD employee, I have a unique perspective on how this organization truly supports the whole child - from ensuring students have access to essential specialist services like PT, OT or Regional Supports for Low-Incidence disabilities, to providing critical resources that help our rural and underserved communities thrive. The dedication I see from SOESD staff in delivering individualized supports and removing barriers to learning reminds me daily why our work matters. We're not just supporting schools; we're investing in the future of every child in Southern Oregon." Below the quote, the name "- Ana Mannenbach" is written, followed by her titles "SOESD Board Chair" and "Zone 9" on separate lines. The entire framed content is superimposed on a background image of a serene forest stream with a rocky bed and lush green trees on the banks.

*"As a board member and previous
SOESD employee, I have a unique
perspective on how this organization
truly supports the whole child - from
ensuring students have access to essential
specialist services like PT, OT or
Regional Supports for Low-Incidence
disabilities, to providing critical
resources that help our rural and
underserved communities thrive.
The dedication I see from SOESD staff in
delivering individualized supports and
removing barriers to learning reminds
me daily why our work matters. We're
not just supporting schools; we're
investing in the future of every child in
Southern Oregon."*

- Ana Mannenbach

SOESD Board Chair

Zone 9

Technology Division

People-First Technology For Learning and Connection



Contact
us

The Technology Department exists to provide innovative, reliable, and secure technology solutions that put people first —empowering staff, students, and school communities. Combining leadership, expertise, and collaboration, the team works together to plan, implement, and maintain systems that support learning, communication, and the success of every individual across our region.



technology_services@soesd.k12.or.us



soesd.k12.or.us/technology



(541) 776-8590

Technology Leadership

Tom Bigboy
Israel Mathewson

Technology Services

*Counties listed represent service utilization in 2025–26

Programs & Services:



Data Center Hosting: Computer Information Services operates SOESD's 24/7 regional data center, delivering reliable, cost-saving technology support for districts.

Jackson, Josephine, & Klamath Counties

District Data Center Support: System Analysts manage regional data centers to reduce costs, boost IT performance, and maximize uptime.

Jackson, Josephine, & Klamath Counties

District Network Support/VoIP Services: Network Analysts support the design, installation, and maintenance of networks, internet connectivity, security, access control, and VoIP systems.

Jackson, Josephine, & Klamath Counties

Electronic Services: Licensed electricians install and maintain networks, security systems, and instructional technology, while technicians repair devices such as iPads—all provided at reduced wholesale prices to stretch district resources.

Jackson, Josephine, & Klamath Counties

Follett Destiny: SOESD hosts Follett Destiny in SOESD's regional data center, giving students and educators access to curated digital and print resources. Help Desk Software Suite. *Jackson, Josephine, & Klamath Counties*

Help Desk Software Suite: Computer Information Services hosts the Region-Wide Help Desk, offering data tracking, asset management, remote support, and reporting for IT, print, and maintenance teams.

Jackson, Josephine, & Klamath Counties

Infinite Visions Hosting: SOESD supports Infinite Visions software in a cloud-hosted or on-premises environment at reduced costs, providing updates and technical support. *Jackson, Josephine, & Klamath Counties*

Internet Connectivity: SOESD delivers cost-effective, reliable Internet with redundancy and Internet2 access, meeting regional bandwidth needs efficiently.

Jackson, Josephine, & Klamath Counties



Professional Development Management

(PDNetworks): PDNetworks manages staff licensing, professional development, and training aligned with district and individual goals.

Jackson, Josephine, & Klamath Counties

Software Development: Software Developers build apps, websites, and data systems tailored to district learning and reporting needs.

Jackson, Josephine, & Klamath Counties

Southern Oregon Regional Cybersecurity Program:

System Analysts protect districts from cyber threats and ensure secure systems with rapid incident response. *Jackson, Josephine, & Klamath Counties*

Services Provided at No Additional Charge

Technology Director Meetings:

SOESD hosts annual meetings of area technology directors to enhance student learning opportunities.

Jackson, Josephine, & Klamath Counties



Student Success Act (SSA) Comprehensive Support Plan (CSP)

Supporting Achievement, Well-Being, and Equity



The Student Success Act Comprehensive Support Plan helps districts put students first by closing academic gaps and strengthening behavioral and mental health supports. Funded through the Student Success Act, SOESD provides free and cost-based technical assistance that guides districts in designing and implementing evidence-based strategies to promote student achievement, well-being, and equity. By aligning with district Integrated Plans and coordinating resources like the Student Investment Account, these supports amplify impact, ensuring every student has the opportunity to thrive both in and out of the classroom.

Contact us



tanya_frisendahl@soesd.k12.or.us



soesd.k12.or.us/ssa



(541) 776-8590

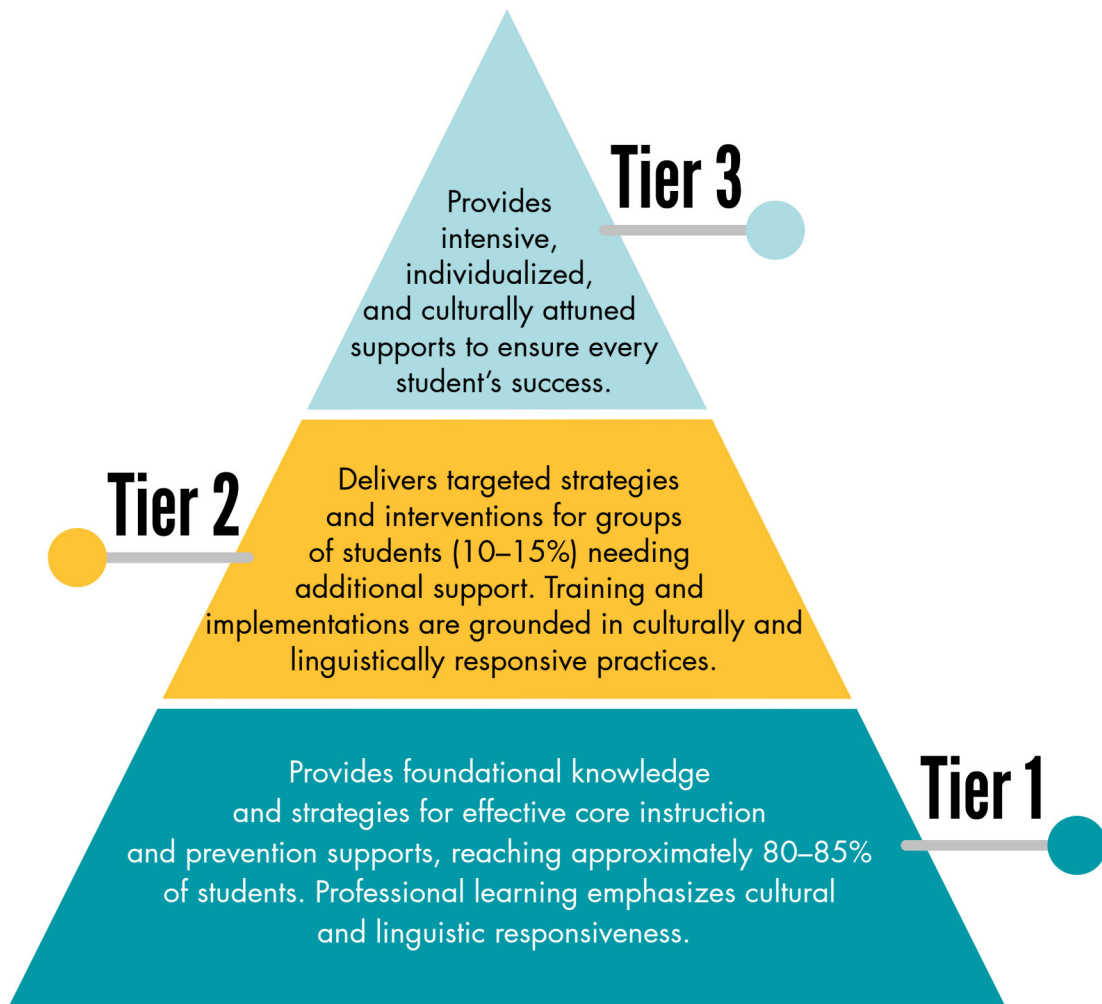
SSA Leadership

Tanya Frisendahl
Morgan Cottle

SSA Comprehensive Plan Overview

Overview

This plan uses a tiered model to help districts reduce academic disparities and strengthen behavioral and mental health supports. Services can be integrated with district efforts to enhance student achievement, well-being, and equity.



Requirements

According to HB 3427 (2019), an ESD Comprehensive Support Plan must:

- (A) Align with and support school districts in meeting the performance growth targets of the school districts developing the plan;
- (B) Include the provision of technical assistance to school districts in developing, implementing and reviewing a plan for receiving a grant from the Student Investment Account;
- (C) Provide for coordination with the department in administering and providing technical assistance to school districts, including coordinating any coaching programs; and
- (D) Be adopted and amended as provided for local service plans under ORS 334.175

SSA - Tier I: Universal Supports



Direct Services - Available at Cost

Supporting Instructional Practices



Mental and Behavioral Supports: Provides educators with trauma-informed mentoring that supports leadership and instructional practices that promote equity, behavior supports, and social-emotional learning for all students.

Reducing Academic Disparities: Supports educators with content-specific mentoring that supports leadership and instructional practices that promote equity, differentiation, evidence-based practices, reduction of academic disparities for historically underserved students, and academic achievement for all students.

- **Beginning Teacher Mentors** - Provides teacher mentors to support beginning teachers with mentoring that supports effective instructional practices, classroom management, and social-emotional learning.
- **Beginning Administrator Mentors** - Provides leadership support and mentorship for administrators across general education, special education, and central office roles.
- **Mental and/or Behavioral Health Professional (FTE):** Licensed mental and behavioral health professionals provide culturally responsive support to students across all three tiers, addressing behavioral and mental health challenges. Tier 1 services include classroom lessons on resilience, self-regulation, and mindfulness, as well as implementation of school-wide social-emotional programs like Second Step and Kelso's Choices. These supports help students build skills for emotional well-being and positive social interactions.

Technical Support Services -

Provided at No Additional Cost



Integrated Programs Plan

- Community Engagement Facilitator
- Data Analysis
- One-on-One Technical Assistance
- Integrated Programs Plan & Progress Report Development
- Longitudinal Performance Growth Targets/Progress Monitoring
- Translation Services
 - Linguava – Supplies translation services for documents focused on SIA work. Districts will be able to access services from Linguava using funding available in district/eligible charter school Linguava accounts.



SSA - Tier I: Universal Supports (Cont.)

Technical Support Services - Provided at No Additional Cost

Professional Learning for Equity and Well-Being

- **Family Engagement – Scholastic & Dr. Karen Mapp**

- Supports districts in reframing family engagement as an instructional strategy to improve student outcomes. Training includes in-person and virtual sessions on effective family-school partnerships and topics such as:

- Effective Practices to Welcome All Families
- Process Conditions and the 4 C's
- Engaging Hard-to-Reach Families
- Differentiated Support and Two-Way Communication - *District teams receive on-site and virtual coaching, with continued support through monthly Communities of Practice (CoPs) and district-specific follow-up.*

- **Playworks – K-8 Organized Play** - Fosters safe, healthy, and inclusive play for K-8 students.

- **Equity Professional Learning (PK-12)** - Foundational training in recognizing and addressing implicit bias, systemic racism, and microaggressions.

- **Skillful Teaching (Research for Better Teaching)** - Builds educators' capacity for effective decision-making, continuous learning, and data-informed instruction to improve student achievement.

- **Skillful Leadership & Coaching – Analyzing Teaching for Student Results (ATSR)** - Seven-day leadership program for improving teaching and learning through observation, analysis, and coaching aligned with state frameworks.

- **Social Emotional Learning (SEL)** - Training and coaching to help districts implement research-based, culturally responsive SEL programs aligned with Oregon TSEL standards.

- **Trauma-Informed Care & Adverse Childhood Experiences (ACEs)** - Professional learning on trauma-responsive practices that promote safety, empowerment, and resilience by creating stable, nurturing environments that prevent and mitigate childhood trauma.

- **Universal Design for Learning (UDL)** - Framework to improve and optimize teaching and learning for all learners based on scientific insights into how people learn.

- **Early Literacy Strategies (K-3) and 4-12 Literacy** - Professional learning in evidence-based reading instruction grounded in the Science of Reading, supporting teachers and paraprofessionals.

- **MTSS, Standards-Based Instruction, & Data-Informed Practice** - Coaching and professional learning to develop and sustain Multi-Tiered Systems of Support (MTSS), implement standards-based instruction, and analyze OSAS trend data to improve teaching and student outcomes.



SSA - Tier II: Group Supports



Direct Services -

*Available at Cost in partnership
with the Student Services Division*

Mental and Behavioral Health Professional (FTE)

Licensed mental or behavioral health professionals support students' behavioral and mental health needs across all three tiers.

- Tier-2: Provides small group counseling, teaches social and emotional skills such as relaxation, problem-solving, and self-regulation, and implements evidence-based programs like:
 - Check-In Check-Out
 - Check and Connect
 - Other reinforcement and self-monitoring systems.



Technical Support Services -

Provided at No Additional Cost



On Demand Training

SOESD offers in-person or virtual training for new or transitioning certified and classified staff on topics such as safe behavior intervention, teamwork in specialized classrooms, implementing Behavior Support Plans and IEPs, and supporting emerging bilingual students.

- **321 Insight** - 321 Insight offers concise, practical online trainings through its Trauma-Informed and ParaSharp series that staff can easily access and apply.
- **SOESD's webPD** – SOESD offers six online, asynchronous courses based on district and charter school input.

SSA - Tier III: Individual Supports

Direct Services - *Available at Cost in partnership with Student Services*



Reducing Academic Disparities and Behavioral and Mental Health

- Licensed Mental and/or Behavioral Health Professional (FTE)
- Tier-3: Provides individual counseling for depression, anxiety, anger management, and trauma, develops crisis de-escalation plans, and conducts suicide screening for moderate- to high-risk students while coordinating with families and community supports.



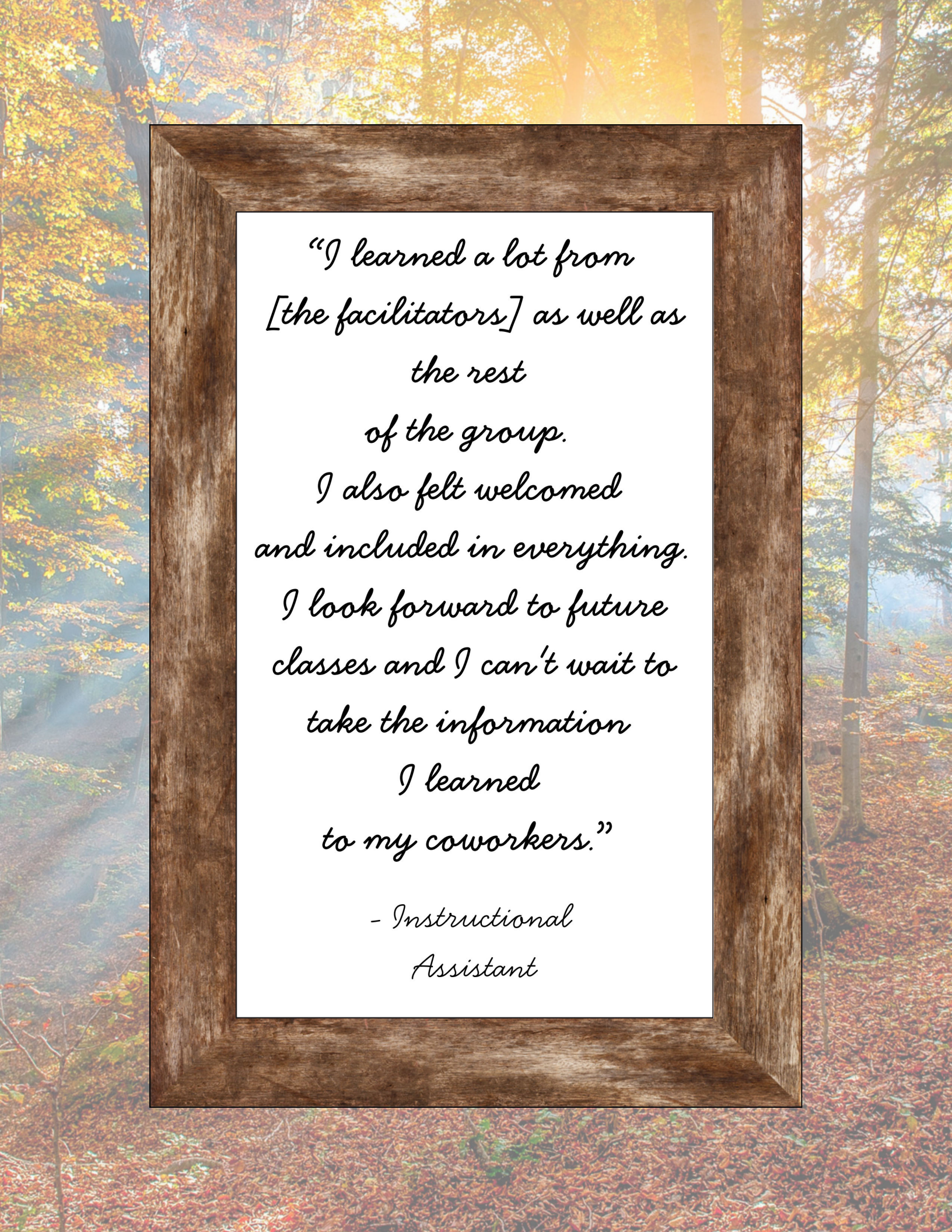
SSA - Supports for Integrated Programs Plan

Supports for Integrated Programs Plan

SOESD provides technical assistance to districts and eligible charter schools in implementing Integrated Programs and meeting state and federal requirements across key areas:

- **Every Day Matters (EDM):** Professional learning and coaching to reduce chronic absenteeism through attendance team support, data tools (CAPT), regional collaboratives, and community partnerships.
- **Small/Rural District Support:** Targeted technical assistance to reduce administrative burden for ODE-identified small and rural districts.
- **High School Success (HSS):** Collaboration with the Career Connected Learning (CCL) Team, Southern Oregon CTE Consortium (SOCTEC), and higher education partners to expand CTE and college-level programs that meet HSS goals.
- **Career and Technical Education (CTE):** Coordination of programs aligned with career pathways and college credit, including Perkins grant management, Program of Study approval, instructor certification, professional development, and technical assistance. SSA-funded project managers provide support connecting CTE and HSS within Integrated Plans.
- **Early Indicator and Intervention Systems (EIS):** Consortium-based support for districts to implement and maintain EIS tools and strategies.
- **Federal School Improvement Support (FSI):** Specialists will be available to work with individual schools, districts, and regionally to offer technical assistance and/or professional learning that supports their identified TSI and/or CSI schools.
- **Student Investment Account (SIA):** SOESD will work with individual districts and regionally to support professional learning and technical assistance to support districts' outcomes, strategies, and attainment of their Longitudinal Performance Growth Targets (LPGTs). Supports listed in the Comprehensive Support Plan are designed to improve student academic outcomes and increase mental and behavioral health and wellness.
- **Early Literacy Success School District Grant (ELSSDG):** Focused on increasing early literacy for children from birth to third grade by reducing literacy academic disparities for student groups that have historically experienced academic disparities. Interested districts can access professional learning and coaching to increase support to parents and guardians to enable them to be partners in the development of their children's literacy skills and knowledge. Supports are research-aligned, culturally responsive, student-centered and family-centered.





*"I learned a lot from
[the facilitators] as well as
the rest
of the group.*

*I also felt welcomed
and included in everything.*

*I look forward to future
classes and I can't wait to
take the information*

*I learned
to my coworkers."*

*- Instructional
Assistant*


Appendix



The appendix lists contact information for each department's administrators, making it easy to connect with the right people when you need support.

Contact Us!


we are
here to help



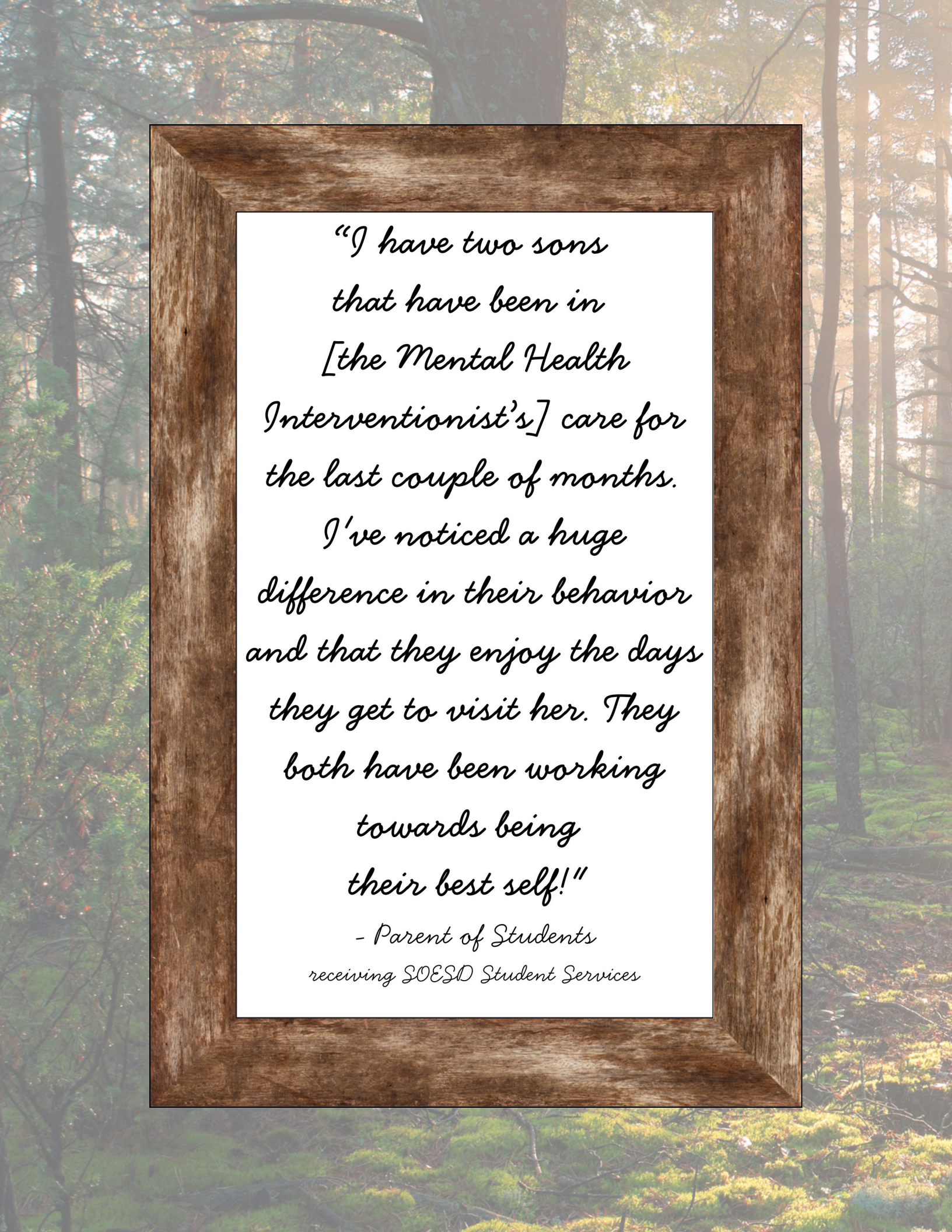
Program	Leadership Contact Info	
Superintendent's Office	Dr. Mark Angle-Hobson - Superintendent mark_angle-hobson@soesd.k12.or.us 541-776-8590 x1117	Kylee Harrison - Asst. Superintendent kylee_harrison@soesd.k12.or.us 541-776-8590 x3124
Human Resources	Ryan Swearingen - Chief Human Resources Officer ryan_swearingen@soesd.k12.or.us 541-776-8590 x1104	Stephanie Cossey - HR Manager stephanie_cossey@soesd.k12.or.us 541-776-8590 x1183
Business Services	Jeanetta Woodside - Chief Financial Officer jeanetta_woodside@soesd.k12.or.us 541-776-8590 x1102	Colton Cochran - District Controller colton_cochran@soesd.k12.or.us 541-776-8590 x1108
Technology Services	Tom Bigboy - Chief Information Officer tom_bigboy@soesd.k12.or.us 541-776-8590 x1109	Israel Mathewson - Technology Manager israel_mathewson@soesd.k12.or.us 541-776-8590 x1180
Autism/STEPS Autism, STEPS Plus, STEPS Care	Nikki Donnelly - Coordinator nicole_donnelly@soesd.k2.or.us 541-776-8590 x3106	
Communications & Partnerships Klamath Promise, Southern Oregon Success, Southern Oregon Early Learning Services (SOELS), Childcare Resource Network (CCRN), Family Support and Connections (FS&C)	Erin Green - Coordinator erin_green@soesd.k12.or.us 541-776-8590 x3162	Program Managers: Eva Skuratowicz - SORS eva_skuratowicz@soesd.k12.or.us 541-776-8590 x1151 Cynthia Anderson - CCRN cynthia_anderson@soesd.k12.or.us 541-776-8590 x1110 Jessie McClung - Klamath Promise jessie_mcclung@soesd.k12.or.us 541-776-8590 x2107 Rene' Brandon - SOELS rene_brandon@soesd.k12.or.us 541-776-8590 x1154
Day Treatment, Residential, Nursing, & Speech Long Term Care and Treatment, Speech Language Services, School Nursing Services	Diane Dunas - Coordinator diane_dunas@soesd.k12.or.us 541-776-8590 x3101	

Contact Us!

we are
here to help




Program	Leadership & Contact Info	
Deaf/Hard of Hearing & Vision Services Audiology, Deaf and Hard of Hearing, Visual Impairment	Jaime Banks - Coordinator jaime_banks@soesd.k12.or.us 541-776-8590 x3122	Eric Crook - Program Manager eric_crook@soesd.k12.or.us 541-776-8590 x3149
Early Intervention/ECSE EI/ECSE, Josephine County LRAC, Early Childhood Services, Inclusion Project	Shannon Bilbao - Coordinator shannon_bilbao@soesd.k12.or.us 541-776-8590 x4747	Louise Horn - Program Manager louise_horn@soesd.k12.or.us 541-776-8590 x4721
Focal Student Groups Equity Collaborative, English Learners, Indian Education, Migrant Education, LGBTQ2SIA+, TAG	Andrea Townsend - Coordinator andrea_townsend@soesd.k12.or.us 541-776-8590 x3130	Lise Prusko - Program Manager elizabeth_prusko@soesd.k12.or.us 541-776-8590 x3132
Integrated Instruction Curriculum, Instruction, & Assessment, Instructional Technology, Library/Media, Apprenticeships, Regional Educator Network, Mentoring	Aaron Cooke - Coordinator aaron_cooke@soesd.k12.or.us 541-776-8590 x1107	
Orthopedic Impairment & Youth Employment Orthopedic Impairment, Youth Employment Services, Regional Technical Assistance Program	Andree Johnson - Coordinator andree_johnson@soesd.k12.or.us 541-776-8590 x3126	
Psychology, Autism, & Traumatic Brain Injury Services Psychological Services, Traumatic Brain Injury Services, Autism	TBD - Coordinator @soesd.k12.or.us 541-776-8590 x3161	
Student Engagement Career Connected Learning (CCL), College & Career (CC4A)/STE(A)M, Attendance, Student Success Act	Brad Capener - Coordinator brad_capener@soesd.k12.or.us 541-776-8590 x3181	Brian Robin - CTE Program Manager brian_robin@soesd.k12.or.us 541-776-8590 x 1113 Karla Clark - CCL Program Manager karla_clark@soesd.k12.or.us 541-776-8590 x1128
Student Behavioral Health & Wellness SBHW, Recovery Supports, School Safety and Prevention Systems	Sandy Stack - Coordinator sandra_stack@soesd.k12.or.us 541-776-8590 x3206	



*"I have two sons
that have been in
[the Mental Health
Interventionist's] care for
the last couple of months.*

*I've noticed a huge
difference in their behavior
and that they enjoy the days
they get to visit her. They
both have been working
towards being
their best self!"*

*- Parent of Students
receiving SOESD Student Services*



*“Everything we do is
rooted in being human-
centered and people-first.
Exceptional service means
listening well, responding
thoughtfully, and
partnering with our
districts in ways that lift
up children and families
across Southern Oregon.”*

*-Dr. Mark Angle-Hobson
SOESD Superintendent*



SOESD



Revised December 5, 2025