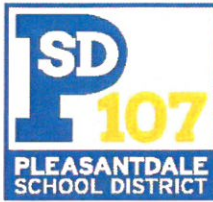


Pleasantdale Elementary School  
8100 School Street  
La Grange, IL 60525  
708.246.4700 Fax: 708.246.4625



Pleasantdale Middle School  
7450 S. Wolf Road  
Burr Ridge, IL 60527  
708.246.3210 Fax: 708.352.0092

Pleasantdale School District 107 | 7450 S. Wolf Road | Burr Ridge, IL 60527 | 708.784.2013 | Fax: 708.246.0161 | www.d107.org

**Background:** Over the course of the past several years, the district has made great strides in helping students to better grasp the Four C's: Communication, Collaboration, Creativity, and Critical Thinking. Likewise, the district has implemented a robust Strategic Blueprint to ensure that each student becomes an inspired learner. This Strategic Blueprint, developed by community stakeholders, recognizes the need to provide students with modern learning spaces that mirror the world of work they will someday enter. Our Strategic Blueprint has allowed us to implement teaching practices that embody the Four C's and help us achieve our mission *To create a community of inspired learners.*

One of our Strategic Blueprint goals seeks to improve our learning environments: *We will provide flexible learning environments that promote purposeful collaboration and a balanced educational approach to create inspired 21st century learners.* The specific action step that supports this goal is: *Seek community input and develop a plan for constructing modern library space at both schools that will support our mission to create a community of inspired learners.*

To accomplish this goal, the District convened a group called LIBRARY 2.0 Task Force to investigate the possibility of updating our library spaces. The Task Force was made up of parents (5), students (4), teachers (3), administrators (5), and the District architect (1). This group met five times over a 10-week period with the intent of learning about modern learning spaces and making recommendations to the Board of Education. Below is a list of meetings and the purpose of each meeting.

What	Description	When/Where
Task Force Kick-Off	At this meeting we will learn what is meant by 21st century learning. We will also connect the work of updating our libraries to our Strategic Blueprint.	October 23 5:00 - 7:00 PM Pleasantdale Middle School
Field Trip	We will head north and visit the recently renovated libraries of three schools in Wilmette School District 39.	November 7 Full day at Wilmette SD 39
Debrief	The task force will review what we have learned and seen and will use that information to create guiding principles and goals for our potential project. Additionally, we will provide our district architects with guidance as they create a first draft of an updated space.	November 13 5:00 - 7:00 PM Pleasantdale Middle School
Design Meeting 1	At this meeting we will review the architect's drawings and provide further guidance to refine the rough designs.	November 27 5:00 - 6:00 PM Pleasantdale Middle School
Design Meeting 2	Our district architects will provide more finalized designs and the task force will provide additional input. We will also celebrate our work!	December 11 5:00 - 6:00 PM Pleasantdale Middle School

Pleasantdale Elementary School  
8100 School Street  
La Grange, IL 60525  
708.246.4700 Fax: 708.246.4625



Pleasantdale Middle School  
7450 S. Wolf Road  
Burr Ridge, IL 60527  
708.246.3210 Fax: 708.352.0092

Pleasantdale School District 107 | 7450 S. Wolf Road | Burr Ridge, IL 60527 | 708.784.2013 | Fax: 708.246.0161 | [www.d107.org](http://www.d107.org)

**The Process:** The LIBRARY 2.0 Task Force started their work by learning about modern learning environments and how school libraries are used by today's students. At the first meeting, the committee developed a list of "This we believe..." statements that would guide their work. Some of these statements included<sup>1</sup>:

- Libraries are collaborative spaces
- Libraries should contain book collections
- Libraries should be comfortable, welcoming, and safe
- Libraries should be able to support multiple activities at once
- Libraries should be flexible enough to support 100 students at a time
- Libraries should be inspiring spaces where students choose to be
- The library should be the learning hub of the school

With these belief statements in mind, the committee evaluated the recently updated libraries at a local school district. The district chosen to tour had updated their libraries in the past five years and used the services of our District's architecture firm, STR Partners. A checklist<sup>2</sup> was created and used to help focus the task force members and ensure that our priorities were kept top of mind as the committee toured the spaces. Each member of the committee was asked to take notes on the design and functionality of the spaces. Likewise, each member was issued a district iPad and was encouraged to take pictures of specific items that could be discussed at our debrief. The checklists, notes, and pictures were then made available as the task force discussed what design aspects were a good fit for our district and how we could best meet our belief statements through updated spaces. At the third task force meeting, the District architect led the group through a detailed debrief that identified the design aspects that worked well for our District. This information was then used to develop three rough sketch designs for each school. At the fourth meeting, the task force offered feedback and clarification to our architect on how the rough designs could be improved. Finally, on December 11, the architects shared the revised proposals for updated library spaces within our schools.

As you can see from the attached drawings prepared by STR Partners, the proposed spaces allow for a flexible learning space that meets the needs of our school district. Both spaces allow for small group, whole class, and grade level activities. Likewise the spaces allow for flexibility in the activities teachers choose to complete in these spaces. Students are able to use these spaces in new and exciting ways and the updated libraries can support multiple activities at the same time. We can also host large group (grade level) presentations.

While the task force worked on the design aspect of a library update, the District's Finance Advisory Team worked on how to responsibly fund the project. The goal of funding this project was to ensure that we did not add to our community's tax burden. To that end, the Finance Advisory Team recommended that the district not abate its referendum bonds but rather allocate those dollars to this project. These funds, in addition to reserve funds, will fully fund this project without impacting our community members' tax bills. The current cost of construction is approximately \$175 per square foot. Additionally, new furniture and technology costs would need to be considered. The estimated and very preliminary cost of the project can be found in the table below. A detailed estimate will follow once the project details have been firmed up.

---

<sup>1</sup> Full list of beliefs are attached to this document

<sup>2</sup> Checklist is attached to this document

Pleasantdale Elementary School  
8100 School Street  
La Grange, IL 60525  
708.246.4700 Fax: 708.246.4625



Pleasantdale Middle School  
7450 S. Wolf Road  
Burr Ridge, IL 60527  
708.246.3210 Fax: 708.352.0092

Pleasantdale School District 107 | 7450 S. Wolf Road | Burr Ridge, IL 60527 | 708.784.2013 | Fax: 708.246.0161 | www.d107.org

	Construction	Furniture
Pleasantdale Elementary School	\$402,000	\$60,000
Pleasantdale Middle School	\$525,000	\$80,000
Total	\$1,067,000	

**Next Steps:** If approved at the January Board of Education meeting, the District administration would work with our architects to begin putting a bid package together in preparation for construction. The entire process from community engagement through completion can be found below.

**COMMUNITY ENGAGEMENT**

**Pre-Design Phase / Schematic Design Phase**

- LIBRARY 2.0 Task Force / Development of Planning Options - 1.5 months
- Selection of a Design Option
- Development of Construction Cost Estimate - 2 weeks
- Board of Education Review / Approval To Proceed

**BID PREPARATION**

**Design Development Phase**

- Selected Schematic Design Options refined in conjunction with Staff and Administration
- 1 month

**Construction Document Phase**

- Design documents developed into technical bidding drawings and specifications - 2.5 months
- Construction Document Phase Cost Estimate prepared

**BIDDING**

**Bidding Phase**

- Advertisement for Bid issued - 2 weeks
- Documents issued for bid - 3 weeks
- Bid Opening
- Bid review / Board of Education Contract Award - 1 week

**CONSTRUCTION**

**Construction Phase**

- Move-out and demolition of existing spaces - 2 weeks
- Construction of new library design - 3 months
- Punch List / Project Closeout - 2 weeks

**SUBSTANTIAL COMPLETION**

- Substantial Completion / Occupancy

Pleasantdale Elementary School  
 8100 School Street  
 La Grange, IL 60525  
 708.246.4700 Fax: 708.246.4625



Pleasantdale Middle School  
 7450 S. Wolf Road  
 Burr Ridge, IL 60527  
 708.246.3210 Fax: 708.352.0092

Pleasantdale School District 107 | 7450 S. Wolf Road | Burr Ridge, IL 60527 | 708.784.2013 | Fax: 708.246.0161 | www.d107.org

Demolition of the existing spaces would begin on the last day of school, and construction would be ongoing throughout the summer. Due to the scope of this work, the construction process would continue into the 2019-20 school year with an expected completion in mid-October.



While construction over the summer and into the school year is an inconvenience, we fully expect to be able to offer summer school at Pleasantdale Middle School. Likewise, the essential services of the library and the librarian will continue. Stacks and other materials will be stored onsite, and the librarian will be able to use classrooms when teaching lessons. While less than ideal, this is workable for the short term.

**Recommendation:** Based on the work of the LIBRARY 2.0 Task Force and the district's ability to fund this project in a responsible manner that does not add additional tax burden, the administration recommends completing an update of our libraries over the course of the 2019 summer.

# LIBRARY 2.0

## Task Force

### This we believe...

- Libraries need collaborative spaces.
- We still need to have BOOKS in a library!
- A Library should be:
  - Comfortable
  - Welcoming
  - Safe
- There should be a place to work in a group without disrupting others in a library.
- Libraries should be able to support multiple activities happening at once.
- The library should be flexible enough to host large groups (furniture, moveable).
- A library should have spaces to support multidisciplinary activities.
- Students should have ownership of their library space (choice, reading, gaming, homework, work in groups/projects).
- A library should be an inspiring space where students want to be.
- Libraries should have signs.

# LIBRARY 2.0

## Task Force

### Library Tour Checklist

Name \_\_\_\_\_

Wilmette Junior High School

- Spaces that allow for collaboration
- Evidence of student ownership (student work displayed and student driven activities)
- A variety of materials available to students
  - Print
  - Digital
  - Audio
  - Visual
- Unique solutions for storage
- Environment is...
  - Safe
  - Welcoming
  - Comfortable
- Space is age appropriate (elementary vs middle school)
- Able to support multiple activities at once
- Quiet spaces for work
- Flexible furniture

To create a community of inspired learners

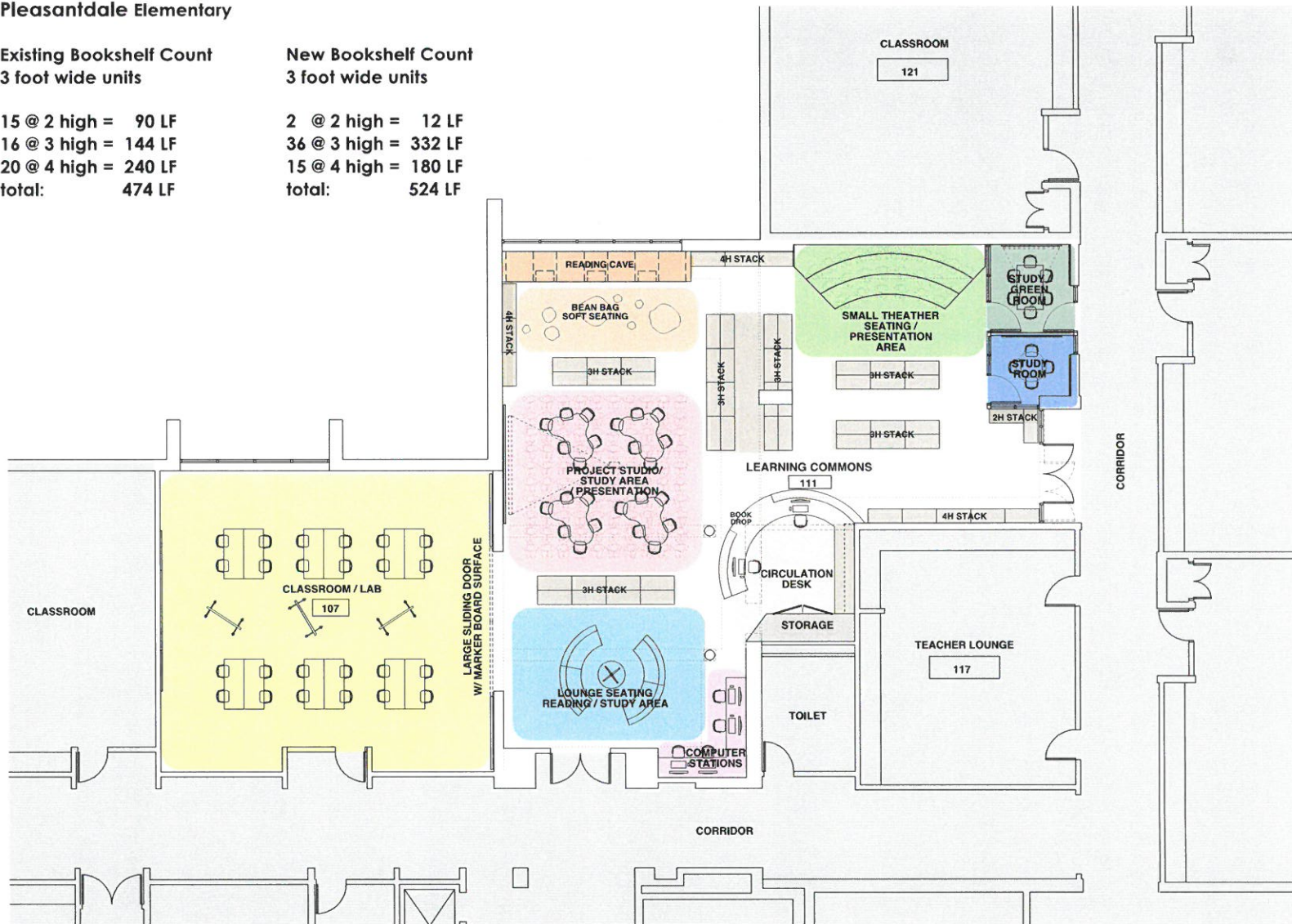
**Pleasantdale Elementary**

**Existing Bookshelf Count**  
3 foot wide units

15 @ 2 high = 90 LF  
 16 @ 3 high = 144 LF  
 20 @ 4 high = 240 LF  
**total: 474 LF**

**New Bookshelf Count**  
3 foot wide units

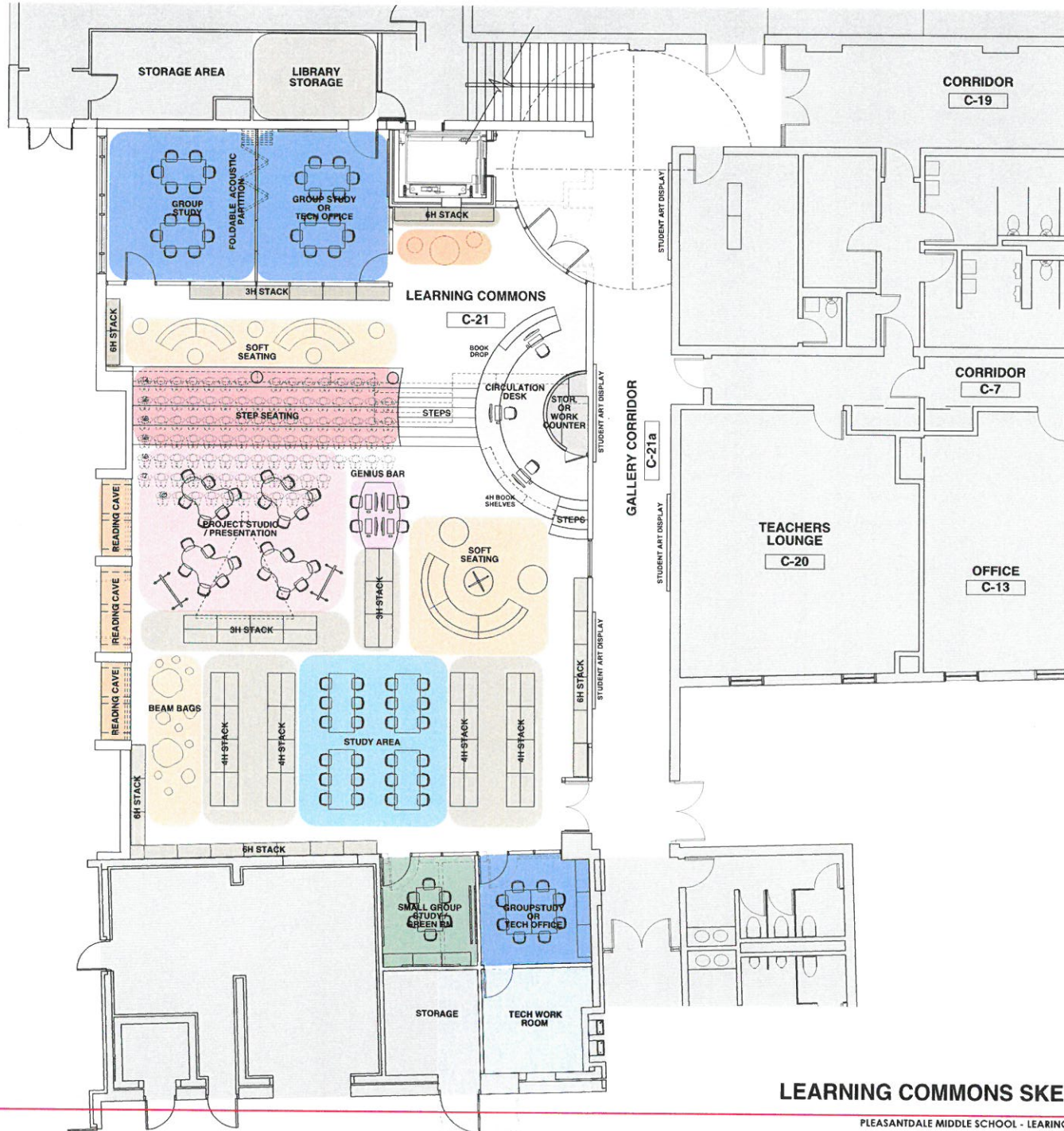
2 @ 2 high = 12 LF  
 36 @ 3 high = 332 LF  
 15 @ 4 high = 180 LF  
**total: 524 LF**



N  
 SCALE 1/4" = 1'-0"



**LEARNING COMMONS SKETCH 2**



**Pleasantdale Middle School**

**Existing Bookshelf Count**  
3 foot wide units

18 @ 3 high = 162 LF  
 12 @ 5 high = 180 LF  
 24 @ 6 high = 432 LF  
**total: 774 LF**

**New Bookshelf Count**  
3 foot wide units

20 @ 3 high = 180 LF  
 27 @ 4 high = 324 LF  
 17 @ 6 high = 306 LF  
**total: 810 LF**

N  
 SCALE 1/4" = 1'-0"



**LEARNING COMMONS SKETCH** 3