

# State Assessments:

MCA/MTAS/ACCESS/Alternate ACCESS

---

Presented by:  
Minda Anderson  
Assistant Superintendent



# Minnesota Assessments

---

## MCA/MTAS

Measure achievement toward meeting Minnesota Academic Standards

Standards-based accountability assessments

## ACCESS/Alt. ACCESS

Measure progress towards meeting the WIDA English Language Development Standards

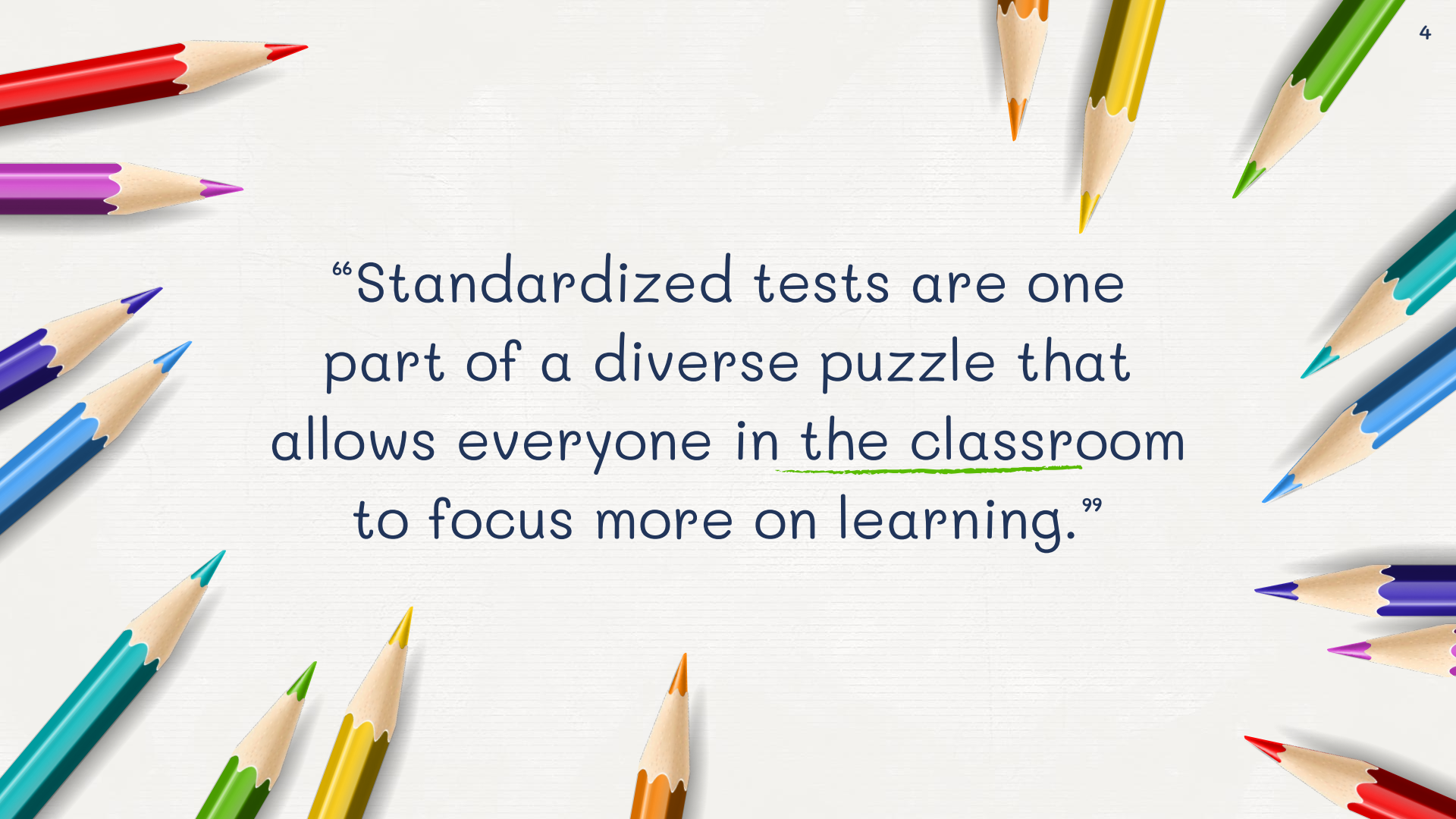
English language proficiency accountability assessments



# Criterion-referenced assessments

- ✗ Measure performance against a fixed set of criteria
  - MN Academic Standards (MCA/MTAS)
  - WIDA English Language Development Standards (ACCESS/Alt. ACCESS)
- ✗ Used to determine mastery of concepts and skills to measure progress toward objectives and goals



A decorative border of various colored pencils (red, purple, blue, teal, green, yellow, orange) is arranged around the central text, pointing towards the center. The pencils are sharpened and have a realistic texture.

“Standardized tests are one part of a diverse puzzle that allows everyone in the classroom to focus more on learning.”<sup>99</sup>



# Required Staff Training

---

- x District Assessment Coordinator (DAC)
- x District Assessment Support (DAS)
- x School Assessment Coordinators (SAC)
- x Proctor Training - MCA, MTAS, ACCESS, Alternative ACCESS
- x Security Training (anyone with access to test materials)



# 1. MCA/MTAS

Measure of MN State Standards



# Purpose of MCA/MTAS

- ✗ State and Federal accountability requirement in Reading and Math
- ✗ Curriculum alignment in Reading, Math and Science
- ✗ School and Classroom use - areas of strength and areas in need of improvement
- ✗ Student Achievement Level



# MCA/MTAS

---

## x Reading

- Grades 3-8 and Grade 10

## x Math

- Grades 3-8 and Grade 11

## x Science

- Grades 5, 8, and the HS year of Biology





# MCA/MTAS - Reading Strands and Substrands

- x Literature
  - Stories, Drama, Poetry
- x Informational Text
  - Literary Nonfiction and Historical, Scientific, and Technical Texts



# MCA/MTAS - Math Strands

- x Number & Operation (grades 3-8 only)
- x Algebra
- x Geometry & Measurement
- x Data Analysis (and Probability)



# MCA/MTAS - Science Strands

- x Physical Science (grades 5 & 8 only)
- x Earth & Space Science (grades 5 & 8 only)
- x Life Science
- x Nature of Science & Engineering



# Achievement Level Descriptors (ALDs)

- x Exceeds the Achievement Standards
- x Meets the Achievement Standards
- x Partially Meets the Achievement Standards
- x Does Not Meet the Achievement Standards

Students who achieve the “Meets” and “Exceeds” levels are considered proficient with regard to the knowledge, skills and abilities (KSAs) described in the academic standards.

[Achievement Level Descriptors MDE](#)





# MCA/MTAS - Test Specifications

- ✗ Lexile Levels
- ✗ Passage Lengths
- ✗ Depth of Knowledge-Cognitive Complexity
- ✗ Benchmark Breakdown
- ✗ Released Items and Sample Passages

[MDE Test Specifications](#)



# Preparing students for MCAs

- x MN State Standards
- x Achievement Level Descriptors
- x Test Specifications
- x Sample Items
- x Testing Strategies
- x Test Tools/Student Tutorial/Test Demo



## 2. ACCESS

Measure of WIDA English Language Standards



# Purpose of ACCESS/Alt. ACCESS

- x State and Federal accountability measures
- x English language proficiency assessments
- x Proficiency level scores and descriptors used to provide EL support and guidance
- x Exit measure for English Language Program





# ACCESS/Alternate ACCESS

- x Listening
  - x Speaking
  - x Reading
  - x Writing
- 
- x Kindergarten - Grade 12



# Preparing students for ACCESS

---

- ✗ WIDA English Language Development Standards
- ✗ Interactive Test Practice Items
- ✗ Sample Items
- ✗ Testing Strategies
- ✗ Test Tools/Test Demo



Assessment Schedule	MCA/MTAS			ACCESS
	Reading	Math	Science	EL
Primary School				Mar 2-19
Grades K-2				Make ups during same block
Intermediate School			Grade 5	Mar 2-19
Grades 3-5	April 6-9	April 20-23	May 4-5	Make ups during same block
	Make-ups	Make-ups	Make-ups	
	April 14-16	April 27-29	May 6-7	
Middle School			Grade 8	Mar 2-19
Grades 6-8	April 6-9	April 21-22	Apr 14-17 May 4-8	Make ups during same block
	Make ups	Make ups	Make-ups	
	April 14-17	April 27-May 1	May 4-8	
High School	Grade 10	Grade 11	After Bio	Mar 2-19
Grades 9-12	March 17-19	March 31-April 1	May 5-8	Make ups during same block
	April 28-29	Make ups	Make-ups	
	Make ups	April 2	May 8	
	April 30			



# Minnesota Assessment Results

---

- x Preliminary Results - embargoed
- x Final Results - made public in August and available on MN Report Card
- x Individual Student Reports (ISR) - sent home to students in the fall
- x Secure Reports - data analysis for school districts/schools

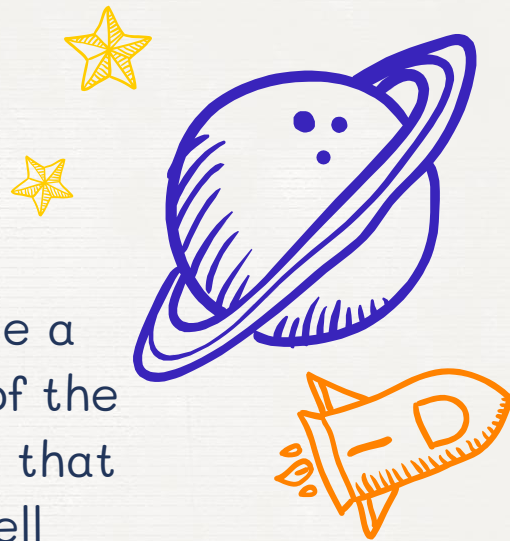


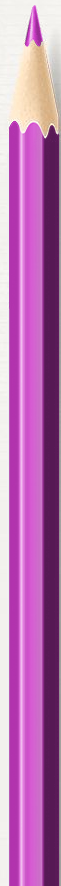


# Final Thought

“No single assessment can comprehensively measure a student’s learning in an educational setting. Results of the Minnesota Assessments are only a subset of the data that schools and districts can use to determine how well students have acquired the knowledge and skills on the Minnesota Academic Standards and WIDA English Language Development Standards and how well the school is teaching them.”

~ MN Assessment Results  
Interpretive Guide p. 4





# Thank you!

**Any questions?**

Minda Anderson

[manderson2@isd726.org](mailto:manderson2@isd726.org)

763-261-6327