

Waunakee Community School District 2020 Annual Meeting & Budget Hearing

Date: Monday, October 19, 2020
Time: 7:00 p.m.
Location: District Administration &
Maintenance Center
Board of Education Room
905 Bethel Circle
Waunakee, WI 53597

1



Waunakee Community School District

Committed to Children . Committed to Community . Committed to Excellence .

Election Of A Chairperson

- ▶ The budget hearing and annual meeting are to be chaired by an elector selected from those present.



Official Notice Of The Hearing And Meeting

- ▶ The Board Clerk, Judith Engebretson, will read the required notices as published in the district's official newspaper.
- ▶ Click [HERE](#) for the required notices



Budget Summary

- ▶ District Administrator Randy Guttenberg will review the budget and financial data
- ▶ Click [HERE](#) for the budget publication





5

BUDGET GOALS

1

To present a balanced budget that:

- ▶ Aligns resources with the strategic planning initiatives of the district
- ▶ Continues to move the district forward with improvements and enhancements to educational programs
- ▶ Provides competitive salary and benefit increases to returning staff
- ▶ Meets the needs of a growing student and increasingly diverse student population

2

Implement strategies and process improvements to reallocate existing budgetary funds to areas of greater priority



Waunakee Community School District

Committed to Children . Committed to Community . Committed to Excellence .



6

BUDGET GOALS

3

Analyze the results of the per student allocation model for grades K-8, create a per student allocation model for grades 9-12, and research staffing allocation models for instructional support positions

4

Connect the strategic planning initiatives together through a long-term resource allocation/funding model



Waunakee Community School District

Committed to Children . Committed to Community . Committed to Excellence .

KEY TALKING POINTS



MISSION STATEMENT

"Committed to Children...Committed to Community...Committed to Excellence"

VISION STATEMENT

The Waunakee Community School District is a collaborative learning community that works with students, staff, families, and the community to ensure that every student is ready for college and career; through a focus on data, research based best practices, and engagement with students to be active partners in their learning.

VISIONARY ASPIRATION

The Waunakee Community School District is a collaborative team of students, staff, families, and the community that:

➤ Establishes excellence in all facets of their work.	➤ Engages and builds positive relationships with students.
➤ Celebrates Both student growth and attainment.	➤ Cultivates critical and creative thinkers, and nurtures collective inquiry.
➤ Sustains learning environments that are challenging and attentive to the diverse learning needs of every students.	➤ Institutes a challenging curriculum, and prepares students for their future.
➤ Teaches students to embrace ethics, values, and character.	➤ Fosters a safe environment for the educational, emotional and physical needs of all.
➤ Promotes student engagement and belief in their own learning.	➤ Provides and supports staff development and opportunities for professional growth.
➤ Respects cultural and global perspectives.	➤ Allocates resources in concert with the district's vision.



Waunakee Community School District

Committed to Children . Committed to Community . Committed to Excellence .

KEY TALKING POINTS

Student Learning, Supports and Experiences

- Teaching and Learning for Student Success
 - Literacy for All
 - STEAM
 - Academic and Career Planning
- Collaboration for Student Growth
 - Professional Learning Community Practices and supports
- Support Structures for Learning
 - Student Social and Emotional Learning
 - Student Wellness
 - Equity and Access to Opportunities
 - Student Activities



Staff Learning, Supports, and Experiences

- Recruitment, Support and Retention of Staff
 - Staff Development Planning for all Employee Groups
 - Compensations Models and Structures
 - Insurance/Clinic/Benefit Programs
 - Wellness and Staff Outreach

Budget & Finance

- Strategic Budget Planning
 - Business Processes/Internal Controls
 - Resource Allocation



Facilities & District Growth

- Facility Maintenance
 - Sustainable Maintenance Planning
- Long Range Community and Facility Growth
 - Planning for Phase 2 of Long Range Facility Growth Plan
- School Safety and Crisis Management
 - Facility Safety Enhancements
 - Crisis Planning

Stakeholder Engagement

- Information Sharing/Public Relations
 - Social Media
 - Newspaper and Print Media
- Consultation and Involvement
 - Linkage Opportunities
 - Survey Input
 - Student and Staff Engagement



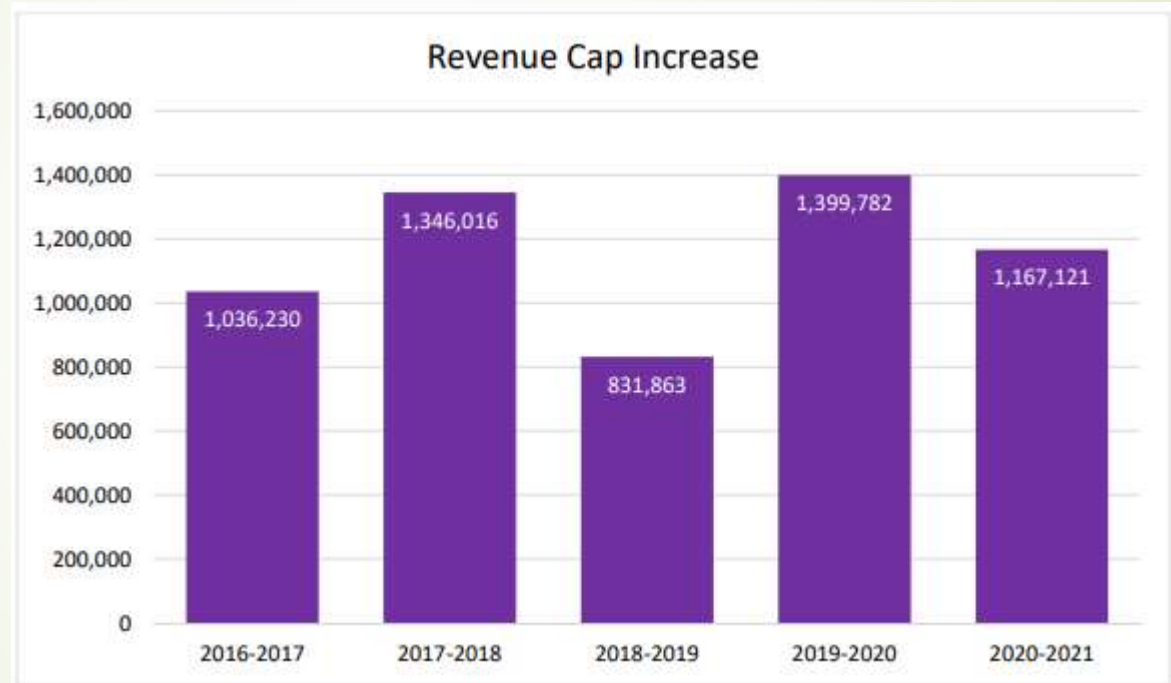
2019-21 State Budget – Revenue Cap

- ▶ The state revenue cap formula was increased by \$175/student for 2019-20 and \$179/student in 2020-21.
- ▶ An \$88/student categorical aid increase was provided for 2019-20, with the amount remaining the same in 2020-21.
- ▶ Waunakee's Fund 10 budget planning for 2020-21 was based on an increase of \$1,618,188.
- ▶ The revenue cap is estimated to increase by \$1,167,121 and non-revenue cap revenues are estimated to increase by \$451,067.



2019-21 State Budget – Revenue Cap

A referendum to exceed the revenue limit was approved at \$540,000 per year from 2014-15 through 2017-18.



Waunakee Community School District

Committed to Children . Committed to Community . Committed to Excellence .

2019-21 State Budget – State General Aid

- ▶ State general aid increased by \$83.2 million in 2019-20, and by \$246.74 million in 2020-21
- ▶ Waunakee is estimated to receive a \$58,443 increase in state general aid for 20-21
- ▶ Under the state revenue cap formula, increases or decreases in state general aid are offset by increases or decreases in the local property tax levy



2019-21 State Budget – Special Education Aid

- ▶ State special education aid increased by \$15.53 million in 2019-20, and by \$81.34 million in 2020-21
- ▶ Waunakee is estimated to receive a \$452,430 increase in state special education aid for 20-21
- ▶ Under the school financing system, increases or decreases in state special education aid are offset by increases or decreases in the local transfer from the General Fund 10 to the Special Education Fund 27



2019-21 State Budget

– Local Property Taxes

- ▶ School levy tax credits on property tax bills funded at \$940,000,000 in 2019-20 and thereafter
- ▶ School districts are not informed of levy credit amounts
- ▶ School district tax levies are certified without knowing the net tax rate
- ▶ Property wealthy/high spending districts receive more funding through tax credits than general school aids



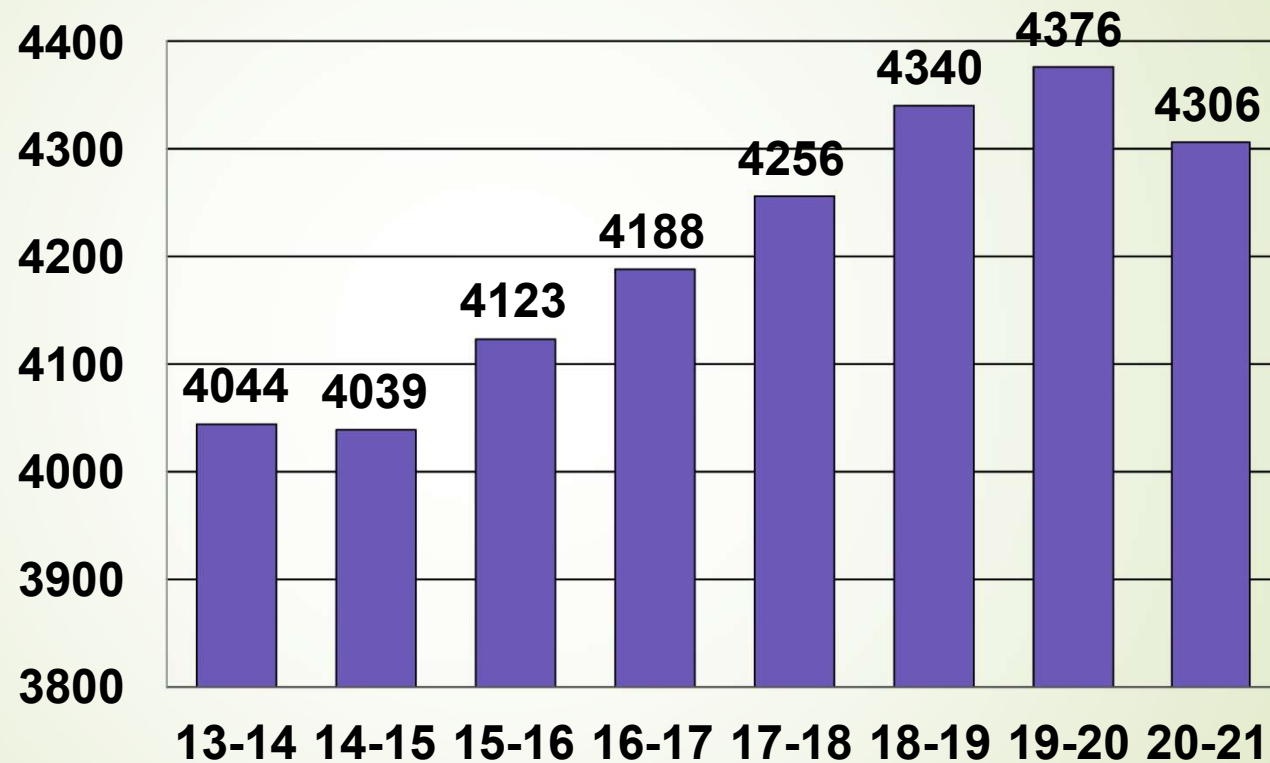
Enrollment Increase

- ▶ Budget developed with an estimated increase of 51 students (total enrollment estimated at 4,427)
- ▶ Actual student count on September 18th identified a total enrollment of 4,306
- ▶ 4,306 students can be compared to 4,376 students from September of 2019
- ▶ The decrease for 2020-21 is 70 students, compared to the budget estimate of an increase of 51 students
- ▶ Click [HERE](#) for September 2020 student count data

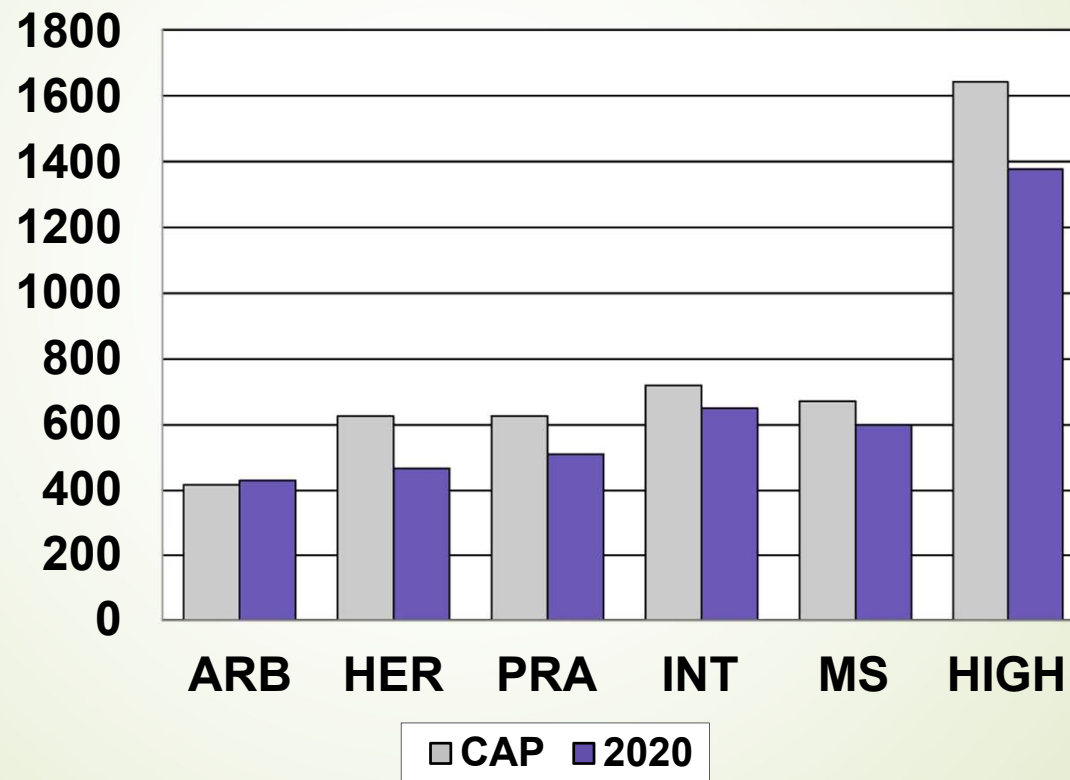


Enrollment Trends

STUDENTS



Building Capacity And Enrollment



Building Capacity And Enrollment

- The maximum capacity in 2020 is estimated to be 4,706.
- Current enrollment leaves maximum excess capacity of 400.



Expenditures (General Fund)

- ▶ 2.9% increase over 19-20 (budgeted)
- ▶ 11.91 FTE (full time equivalency) increase in staff
- ▶ The School Board will approve 2020-21 salaries/wages later this fall. (The goal is the November School Board meeting.) No increases have been provided at this time.
- ▶ The contingency fund of \$100,000 is included in the budget



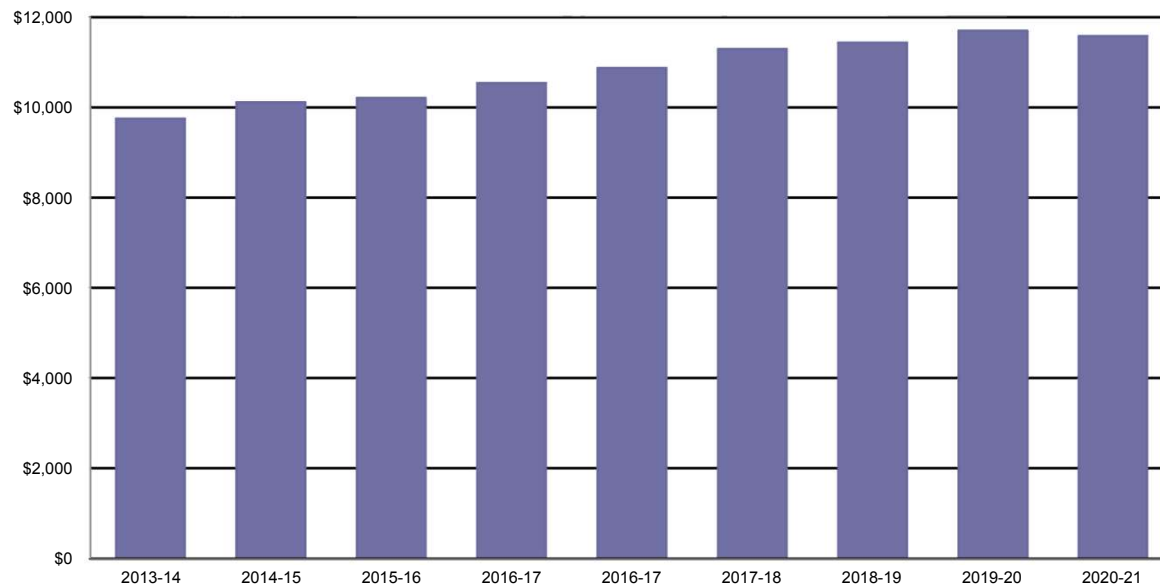
EXPENDITURES (GENERAL FUND ACTUAL)

- \$39,883,038 in 13-14
- \$40,858,908 in 14-15
- \$42,107,293 in 15-16
- \$45,552,745 in 16-17
- \$48,074,659 in 17-18
- \$49,647,730 in 18-19
- \$51,207,365 in 19-20
- \$52,908,847 (budget)



Cost Per Pupil (General Fund Actual/Enrollment)

Per Pupil



13-14	\$ 9,862
14-15	\$10,116
15-16	\$10,213
16-17	\$10,877
17-18	\$11,296
18-19	\$11,440
19-20	\$11,702
20-21	\$11,585 (budget)



Revenue (General Fund)

- ▶ State aid increases \$58,443 or 0.2%
- ▶ Local taxes increase \$1,090,153 or 4.7%
- ▶ Total increase of \$1,618,188 or 3.1 (over budget in 19-20)

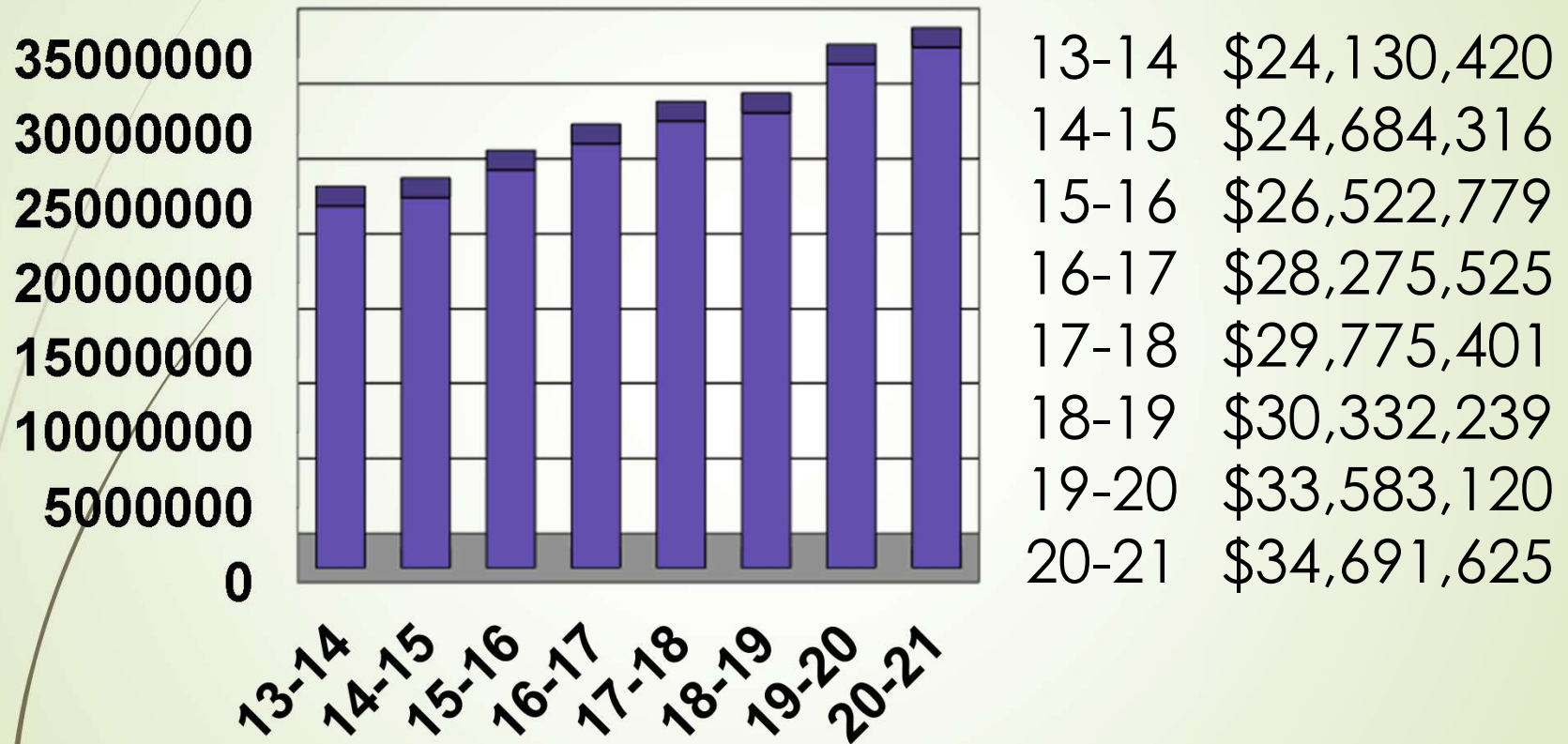


Revenue (General State Aid Vs. Property Tax – Fund 10)

Year	% State Aid	% Per Pupil Aid	% Tax
13-14	46.8	0.7%	47.4
14-15	46.5	1.4%	46.4
15-16	44.8	1.4%	48.2
16-17	44.9	2.2%	47.1
17-18	43.0	3.9%	47.0
18-19	41.4	5.5%	45.3
19-20	40.6	6.0%	45.4
20-21	39.4	5.9%	46.0



Tax Levy



Tax Levy

- ▶ The increase is primarily due to General Fund 10 expenditure increases.
- ▶ The School Board is allowed by law to change the tax levy as necessary prior to November 1st.
- ▶ The debt service tax levy is \$9,521,947 (the long-term financial plan peaks during 2027-2028 at \$7,554,988). The debt service levy includes \$2,127,502 identified as a debt service defeasance (also known as pre-paying existing debt).



Tax Levy – Nov. 3rd Referendum

The School Board has approved the following referendum for November 3rd:

- ▶ The Waunakee Community School District shall be authorized to exceed the revenue limit by \$2,127,502 per year for five years beginning with the 2020-2021 school year and ending with the 2024-2025 school year, for non-recurring* purposes consisting of operational and maintenance expenses.

**A non-recurring referendum allows a school district to levy additional dollars for a period of time defined in the resolution (set end date)*



Tax Levy – Nov. 3rd Referendum

This operational referendum question provides the Waunakee Community School District Board of Education (BOE) access to funds currently levied in the district's debt service fund (Fund 39). This provides flexibility to use these monies in the district's general educational fund (Fund 10) for:

- COVID-19 expenses
- 2020-2021 school year reopening expenses
- Unanticipated State budget adjustments
- Immediate school and building needs as identified by the BOE

Examples of these COVID-19 response expenditures are staff and student technology, additional staffing needs, cleaning and sanitizing equipment and supplies, transportation routes, Personal Protective Equipment (PPE), etc.

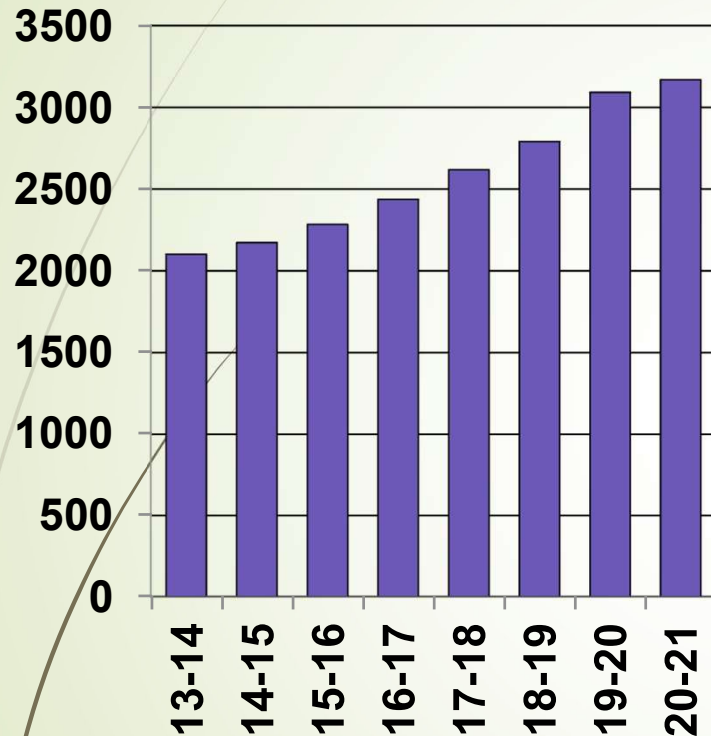


Tax Levy – Nov. 3rd Referendum

There will be NO TAX INCREASE for our residents. This referendum DOES NOT change the property tax levy for the 2020-2021 school year because the \$2,127,502 will be levied in either Fund 10 (if the referendum passes) or Fund 39 (if the referendum does not pass).



Equalized Value (in Billions)



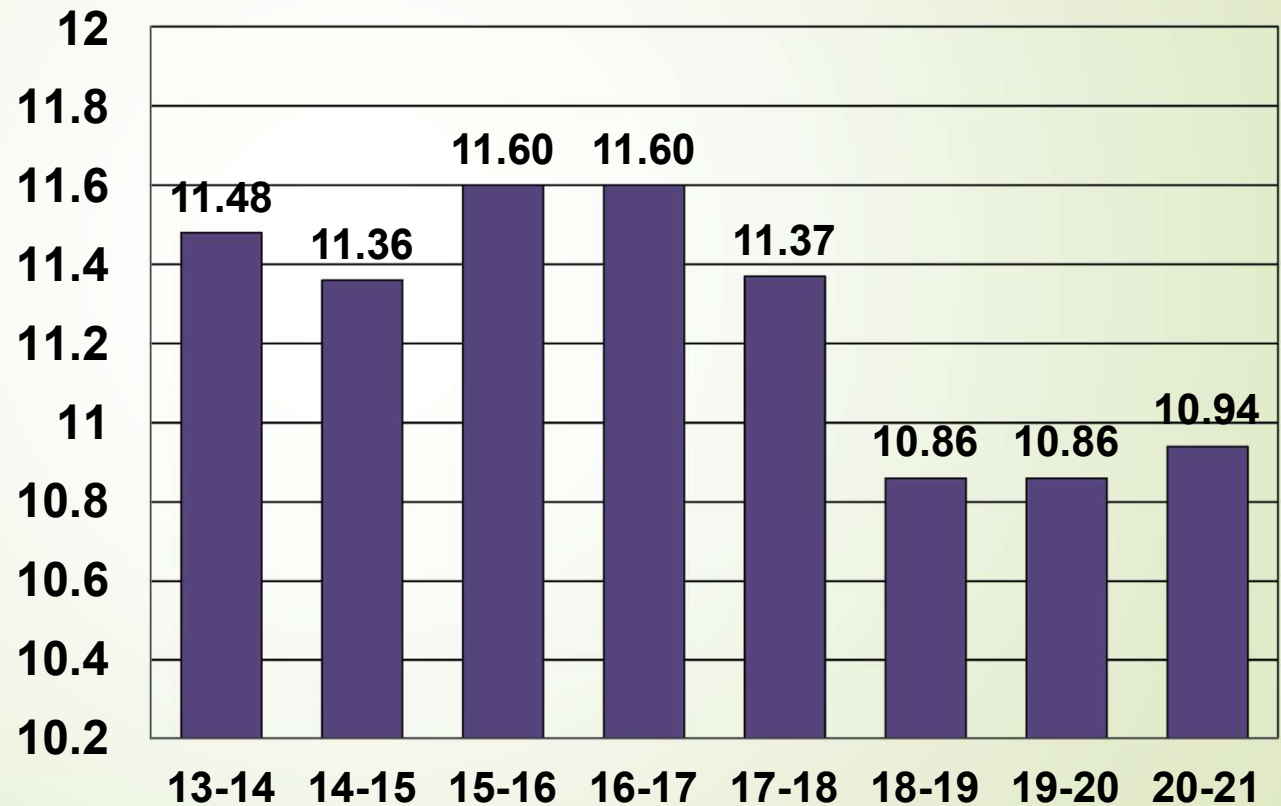
- 13-14 \$2.1 billion
- 14-15 \$2.2 billion
- 15-16 \$2.3 billion
- 16-17 \$2.4 billion
- 17-18 \$2.6 billion
- 18-19 \$2.8 billion
- 19-20 \$3.1 billion
- 20-21 \$3.2 billion



Tax Rate – district average

Estimated Increase is \$28 on a \$360,000 home with 0% inflation

- \$100,000 = \$ 8
- \$200,000 = \$ 16
- \$300,000 = \$ 24
- \$400,000 = \$ 32
- \$500,000 = \$ 40



Equalized Value - October 1st, 2020

- ▶ The 2020-21 Tax Levy is estimated based on a 2.5% increase in the equalized property value in the District.
- ▶ The State of Wisconsin certifies the equalized property value on October 1, 2020.
- ▶ Increases in property value above the 2.5% estimate will result in the property tax rate decreasing.



Changes in Property Values Result in Property Tax “Shifts”

- ▶ Two types of property tax “shifts” can occur, between municipalities and within municipalities
- ▶ Between municipalities occur as equalized values change over time (the Town of Westport paid 22.7% of school taxes in 2019-20, 22.6% in 2018-19, 23.1% in 2017-18, and 23.6% in 2016-17.)
- ▶ Within municipalities occur as assessed values change
- ▶ Click [HERE](#) for Tax Levy information



District Fund Balance (Assets-liabilities)

<u>YEAR</u>	<u>AMOUNT</u>	<u>% OF NEXT YEAR'S BUDGET</u>
13-14	\$7.4 M	18.1%
14-15	\$8.3 M	19.3%
15-16	\$9.2 M	20.8%
16-17	\$8.2 M	17.4%
17-18	\$7.4 M	15.3%
18-19	\$6.8 M	13.2%
19-20	\$6.4 M	12.1%



Next Steps with 20-21 Budget

The School Board must modify the budget based on:

- September enrollment count (4,306 compared to budget estimate of 4,427, which decreases the revenue limit formula)
- Budget changes that have taken place since August 2020 (Cash flow borrowing expenses, open enrollment revenues and expenses, 4K expenses, transportation expenses, utilities, building budgets, summer school budget, insurance settlement, district grants, personnel costs, school reopening costs, etc.)
- Final district property values (\$3.18 billion compared to \$3.17 billion budget estimate, which slightly decreases the tax rate)
- Final district revenue cap amount (\$45,470,595 compared to budget estimate of \$45,785,908)



Next Steps with 20-21 Budget

- ▶ Final district state aid/property tax amount (State aid is \$20,532,274 compared to budget estimate of \$20,767,173 and property tax amount of \$24,166,928 compared to budget estimate of \$24,210,291)
- ▶ Final district tax rate (\$10.89 compared to budget estimate of \$10.94)
- ▶ Final estimated tax increase on a \$360,000 home assuming 0% increase in value (\$10.00 compared to budget estimate of \$28.00)
- ▶ All of the changes will be completed by November 1, 2020 which is the last date possible to approve the budget and tax levy
- ▶ A special board meeting is scheduled for Monday, October 26th to approve the budget and tax levy for 2020-21



Budget/Financial Reviews

The budget/financial status of the district is reviewed by multiple internal and external groups including:

- ▶ School Board Treasurer – Jack Heinemann
- ▶ School Board Budget Committee (3 members)
- ▶ School Board (7 members)
- ▶ Department of Public Instruction
- ▶ External School Board Auditor (Wegner CPAs.)
- ▶ External Private Businesses (Moody's and Standard & Poor's Ratings)
- ▶ Any citizen who wishes to review information



Budget/Financial Reviews

As an example:

Summary

[Waunakee Community School District](#) (Aa2) benefits from its moderate tax base size that is favorably located near Madison and strong wealth and income indicators. The district's credit profile will be challenged by its weak liquidity levels and below median reserves. While the debt burden is expected to remain above average, overall fixed costs of the district are moderate.

On May 26, 2020 a negative outlook was assigned to Waunakee Community School District.

Credit strengths

- » Moderately sized tax base near Madison
- » Stable enrollment
- » Above average resident income levels

Credit challenges

- » Narrow liquidity and dependence on cash flow borrowing
- » Above average debt burden with plans for additional debt

- From May 26, 2020 review of district finances from Moody's Investors Service confirming existing Aa2 rating
- Click [HERE](#) for Bond Rating information



Waunakee Community School District

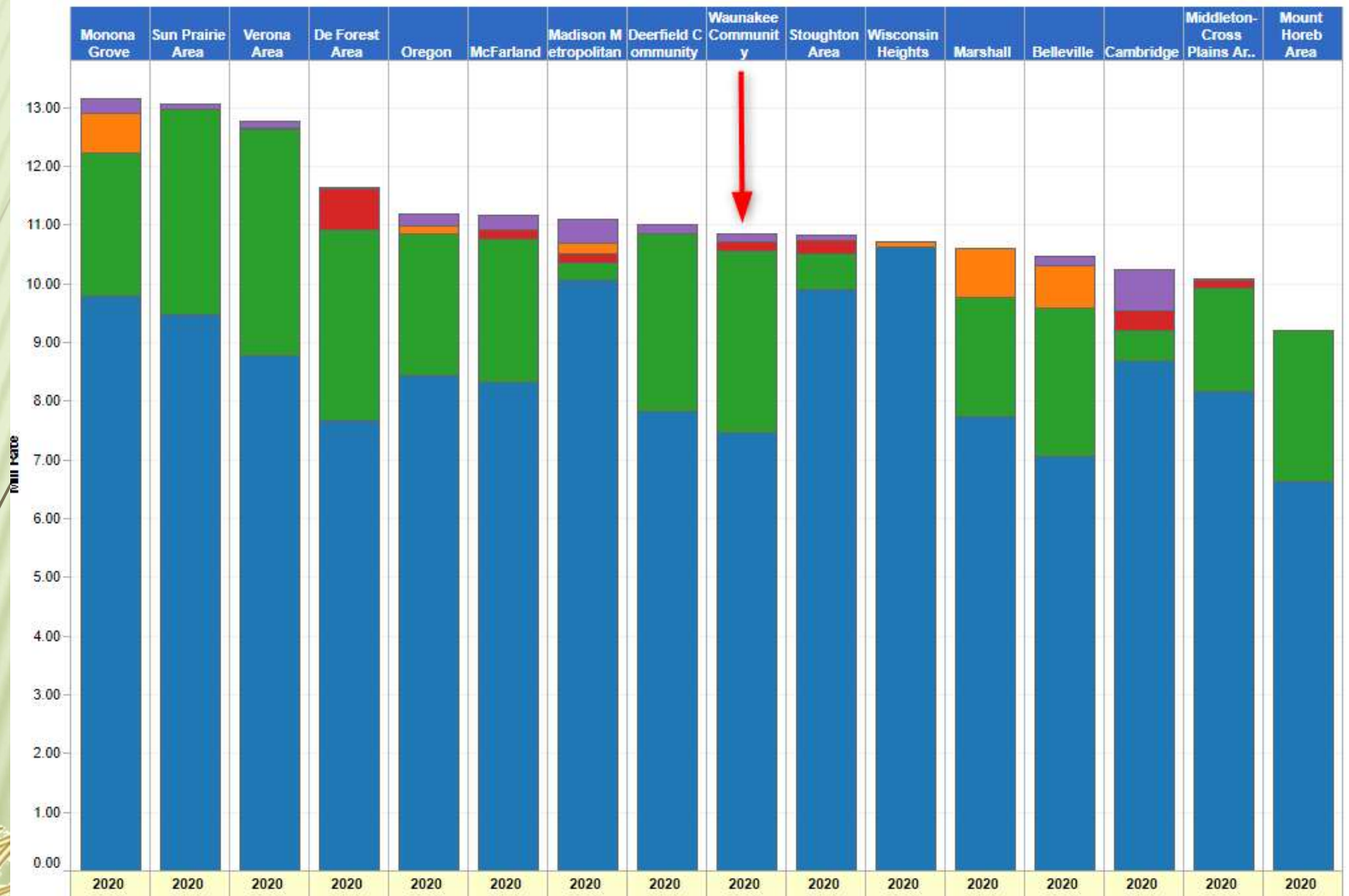
Committed to Children · Committed to Community · Committed to Excellence

Dane County Tax Rate - 2019-20

37

Mill Rates

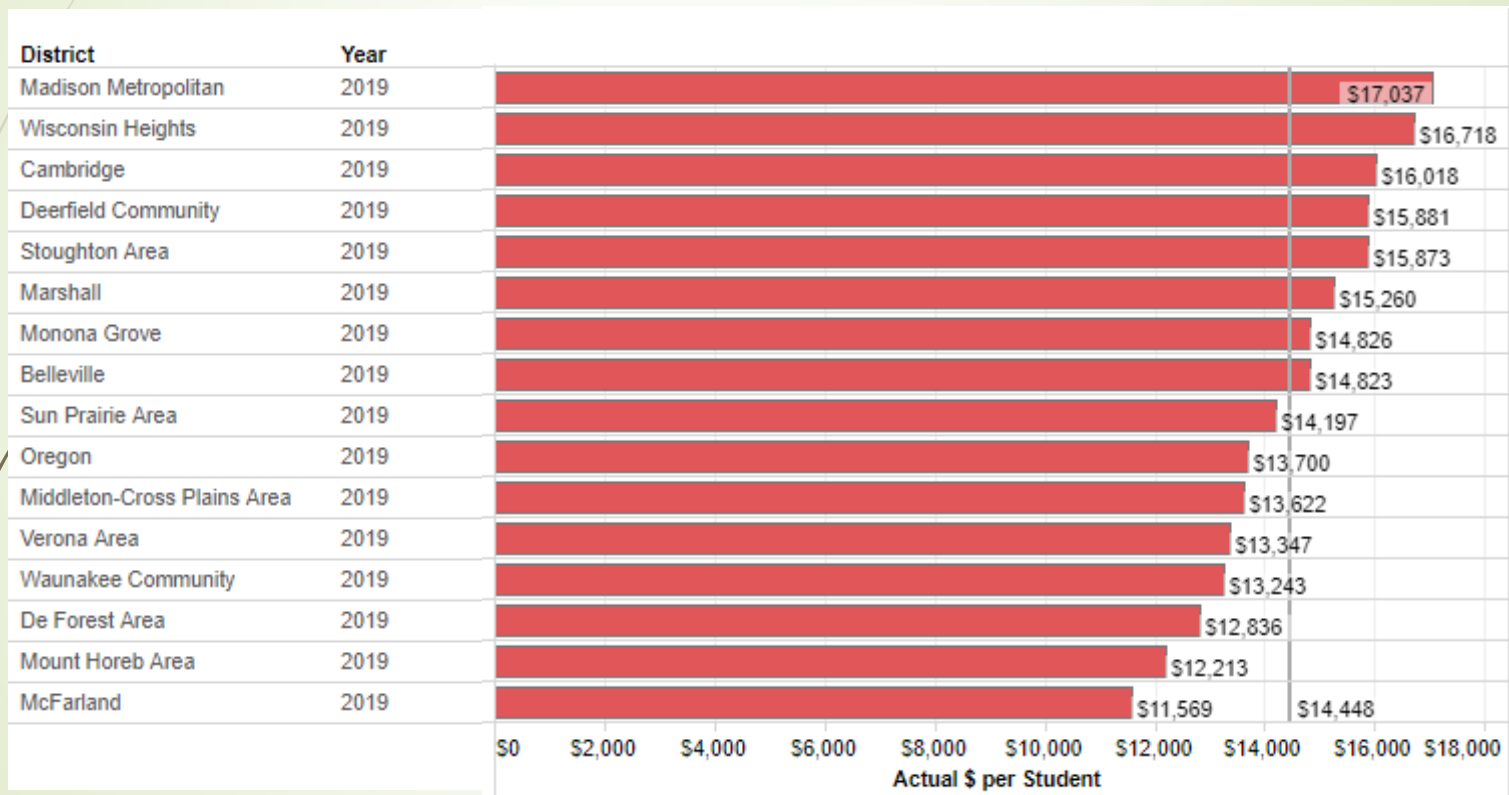
Source: WI Certification of Tax Levy Summary Per DPI



Waunakee Community School District

Committed to Children · Committed to Community · Committed to Excellence

Dane County Cost/Student 2018-19



Budget Detail And Questions

- ▶ We will be happy to answer any questions you may have.
- ▶ Click [HERE](#) for detailed budget information



Minutes 2019

- ▶ Please review the minutes of last year's meeting.
- ▶ Click [HERE](#) for last year's minutes



Waunakee Community School District

Committed to Children · Committed to Community · Committed to Excellence

Treasurer's Report

- ▶ Board Treasurer, Jack Heinemann, will review this report.
- ▶ Action should be taken to accept the report.
- ▶ Click [HERE](#) for the treasurer's report



Resolutions

- ▶ All need a motion and a second .
- ▶ Please state your name for the minutes of the meeting.



A. Student Fees Resolutions

Resolution A / Authorize the School Board to Charge Student Fees

Be it resolved that the Board of Education of the Waunakee Community School District, Dane County, State of Wisconsin is hereby directed to charge student fees, and at such cost as shall be set by said school board.

Introduced
by: _____

Seconded
by: _____

Dated: _____, 2020.



B. Board Salaries

Present Salaries

- ▶ President, Clerk, and Treasurer receive \$3,200 per year for all regular and special meetings, and committee meetings.
- ▶ All other Board Members receive \$2,800 per year for all regular and special meetings, and committee meetings.
- ▶ Reimbursement for expenses.



Resolutions

Resolution B / Board Salaries and Expenses

Be it resolved that the Board members of the Waunakee Community School District be paid a salary as stipulated below and be reimbursed for expenses incurred on district business when traveling outside of the district.

Salaries to be:

President, Clerk, Treasurer _____ (currently \$3,200 per year for all regular/special /committee meetings)

All other Board Members _____ (currently \$2,800 per year for all regular/special/committee meetings)

Introduced by: _____

Seconded by: _____

Dated: _____, 2020.



C. School Lunch Program

- ▶ The Board needs authorization to conduct a food service program.



Resolutions

Resolution C / School Lunch Program

Be it resolved that the Board of Education of the Waunakee Community School District, Dane County, State of Wisconsin is hereby directed to furnish school lunches to any and all students of this district at such places and times, and at such cost as shall be set by said school board, and the school board is hereby authorized to pay any deficiency which may result from said lunch program (Section 120.10 (16)).

Introduced by: _____

Seconded by: _____

Dated: _____ 2020.



D. Legal Counsel

- ▶ Periodically it is necessary for the Board to seek legal advice and counsel. Your approval is necessary.



Resolutions

Resolution D / Authorization for Legal Counsel

Be it resolved that the Board of Education of the Waunakee Community District be authorized to engage legal council to represent the district and provide legal advice to the district.

Introduced by: _____

Seconded by: _____

Dated: _____ 2020.



E. Annual Meeting Date

- ▶ You may set the date and hour for the next meeting or give the Board authority to do so.



Resolutions

Resolution E / 2020 Annual Meeting Date

Be it resolved that the Board of Education of the Waunakee Community School District be authorized to set the date and hour for the 2020 Annual Meeting within the guidelines established by Wisconsin Statutes or Be it resolved that the 2021 Waunakee Community School District Annual Meeting be held on _____, 2021. (Between the fourth Monday in July and the fourth Monday in October).

Introduced by: _____

Seconded by: _____

Dated: _____ 2020.



F. Transportation

- ▶ The Board needs your approval to contract for bus service and/or operate its own buses.



Resolutions

Resolution F / Transportation

Be it resolved that the Board of Education of the Waunakee Community School District, Dane County, State of Wisconsin be authorized to purchase, operate and maintain transportation vehicles as well as contract for transportation services to provide transportation to students, including but not limited to students whose residence is located within two miles of the school the student attends, as per Board Policy.

Introduced by: _____

Seconded by: _____

Dated: _____ 2020.



G. Tax Levy

- ▶ The Board recommends a total tax levy of \$34,691,625 of which \$24,210,291 is for the general fund, \$9,521,947 is for debt service, \$0 for non-referendum debt service, \$509,296 is for the capital expansion fund, and \$450,091 is for community service.



Resolutions

Resolution G / Adoption of Levy Tax

Motion may be as follows: Mr. or Ms. Chairperson, I move that there be levied a school tax assessed against all taxable property within the Waunakee Community School District in the sum of \$34,691,625 necessary to operate and maintain the District School System and to finance the recommended budget for the 2020-2021 school year.

Introduced by: _____

Seconded by: _____

Dated: _____ 2020.



Questions / Information

- ▶ Please feel free to ask for information or answers of any Board member or administrator.



*Thank You for Coming
This Evening*

