



Harriet Tubman Middle School

Relocation: Overview

January 11, 2022



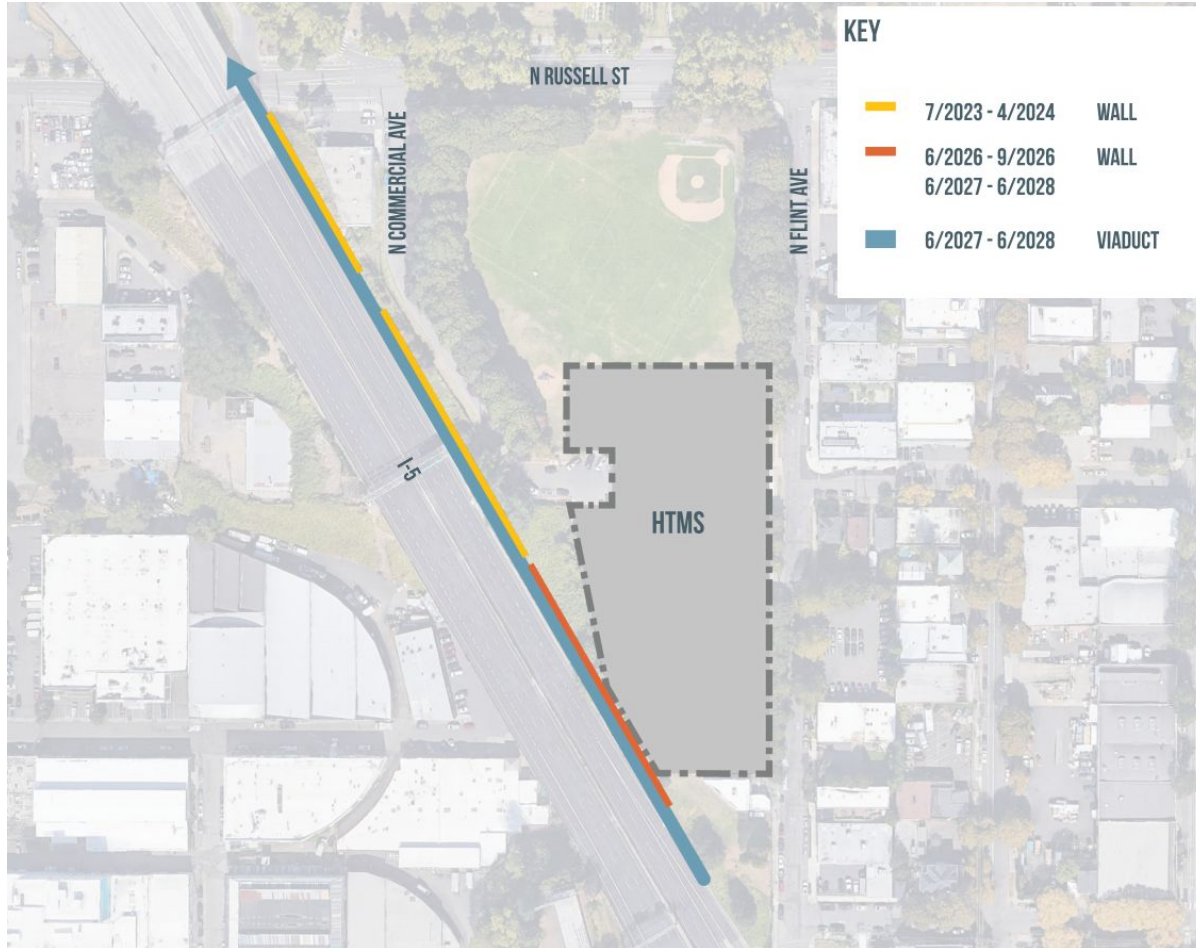


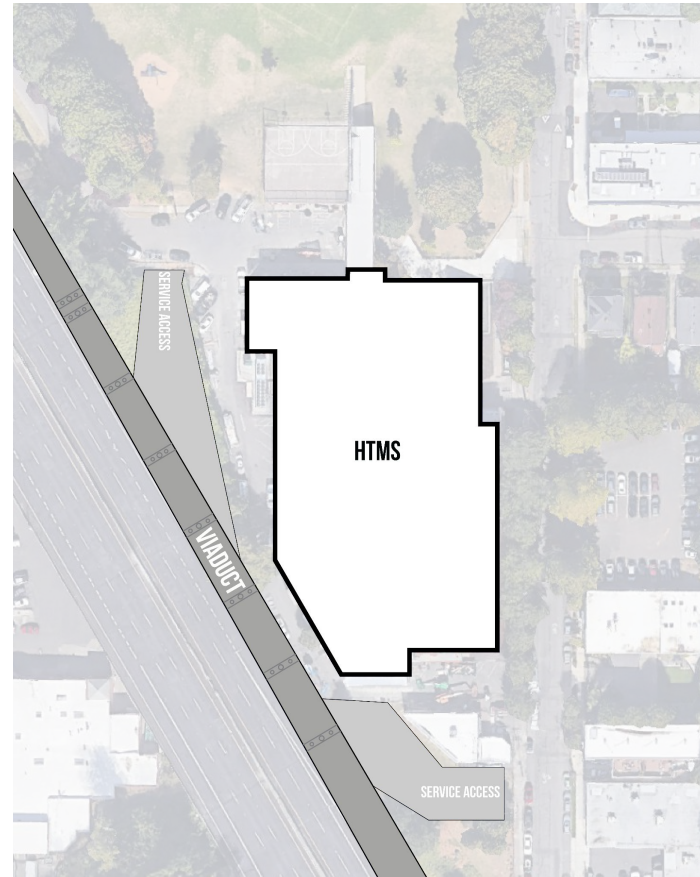
For Today

- Problem Overview
- Process
- Site Evaluation Update
- Legislature Update
- Community Engagement
- Board Direction

For Next Week

- Problem Overview (Detailed)
- Process/Timeline
- Site Evaluation Update
- Legislature Update
- Community Engagement
- Board Direction





NOTE: VIADUCT
CONSTRUCTION
TO TAKE PLACE
6/2027 - 6/2028



Process

4 Phases

1. **DISCOVERY**
2. **DEVELOPMENT CRITERIA**
3. **ANALYSIS**
4. **SCENARIO PLANNING**



Process

4 Phases



1. **DISCOVERY**
2. **DEVELOPMENT CRITERIA**
3. **ANALYSIS**
4. **SCENARIO PLANNING**



Site Evaluation Status (staff efforts)

The District is currently studying two options

Each option contains its own unique challenges, costs, and schedules

Category A

Purchase & Rebuild at
a New Site

Category B

Relocate to a District-owned
Parcel & Modernize/Upgrade



Category A

Purchase and Rebuild a New Site

Opportunities

- Construction of a new school in the HTMS catchment area would limit impact to feeder schools

Constraints

- No current ***Potentially Viable Site*** options (based on initial criteria)



Initial Criteria

- **Location** - site must be located within existing Harriet Tubman catchment area
- **Land Area** - between 6 - 9 acres is ideal for a middle school
- **Availability (Time)** - the Eliot Viaduct construction will impact HTMS usability starting 2027-28



Site Evaluation Status

- **Viable Site** - thoroughly vetted to be an adequate property to accommodate a new school. Considerations include location, zoning, suitability, environmental impacts, accessibility, stakeholder and community input, etc
- **Potentially Viable Site** - meets some or all minimum criteria but has not undergone thorough vetting
- **Unlikely Viable Site** - does not meet minimum criteria



Category A

STATUS	SITE	LOCATION	LAND AREA (ACRES)	AVAILABILITY (TIME)
		<i>Site must be located within the Harriet Tubman catchment area</i>	<i>Between 6-9 acres is ideal for a middle school</i>	<i>The Eliot Viaduct construction will impact HTMS usability starting 2027-28</i>
REFERENCE	HARRIET TUBMAN	YES	3.1	NA
UNLIKELY VIABLE	PBOT	YES	5.5	LONG
UNLIKELY VIABLE	SEI	YES	4.5	LONG
UNLIKELY VIABLE	EMANUEL	YES	4.43	LONG
UNLIKELY VIABLE	LLOYD CENTER	NO	24.25	LONG
UNLIKELY VIABLE	IRVING PARK	YES	16	LONG
UNLIKELY VIABLE	WHITAKER-ADAMS	NO	10	MID
UNLIKELY VIABLE	CONCORDIA	NO	20	LONG
UNLIKELY VIABLE	N STANTON	YES	5.27	LONG
UNLIKELY VIABLE	THUNDERBIRD WAY	NO	3.71	LONG
UNLIKELY VIABLE	BOYS AND GIRLS CLUB	YES	1.6	LONG
UNLIKELY VIABLE	PPA	YES	2.66	LONG



Category A

Current Status

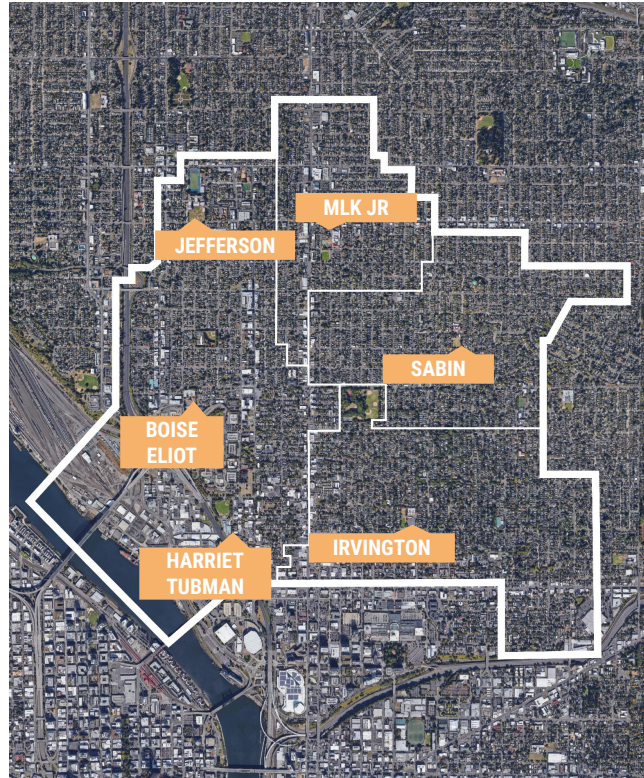
- Still under consideration
- Community engagement ongoing
- No current ***Potentially Viable Site*** options (based on initial criteria)

Next Steps

- Continued community engagement
- Connect with PP&R regarding potential options
- Explore creative suggestions & re-review smaller sites
- **Input from decision maker (Board of Education) on site evaluation criteria revisions**



Category B





Category B

Relocate to a district-owned property

Opportunities

- Increased enrollment at schools with available capacity
- Potential to expand programming at schools with low utilization
- Capital improvements to multiple schools

Constraints

- Disruptive to many students, families & communities



Category B

STATUS	SITE	LOCATION	BUILDING AREA (SQUARE FEET)	LAND AREA (ACRES)	2021-22 UTILIZATION	AVAILABILITY (TIME)
		<i>Site must be located within the Harriet Tubman catchment area</i>	<i>Between 90,000 and 120,000 SF is ideal for a middle school</i>	<i>Between 6-9 acres is ideal for a middle school</i>	<i>Utilization around 80-85% is best for a middle school</i>	<i>The Eliot Viaduct construction will impact HTMS usability starting 2027-28</i>
REFERENCE	HARRIET TUBMAN	YES	87,610	3.1	53%	NA
MAYBE POTENTIALLY VIABLE	BOISE-ELIOT	YES	66,054	4	52%	MID
MAYBE POTENTIALLY VIABLE	IRVINGTON	YES	67,899	3.5	45%	MID
MAYBE POTENTIALLY VIABLE	MLK JR	YES	99,537	4.9	50%	MID
MAYBE POTENTIALLY VIABLE	SABIN	YES	65,769	3.6	56%	MID
UNLIKELY VIABLE	BESC	YES	NA	10.2	NA	LONG
UNLIKELY VIABLE	HUMBOLDT	YES	43,489	2.98	NA	LONG
UNLIKELY VIABLE	JEFFERSON	YES	318,423	13.56	32%	MID



Category B

Current Status

- Still under consideration
- Community engagement ongoing
- Cost considerations and feasibility are under review
- No clear best or most viable option

Next Steps

- Continued community engagement
- **Input from decision maker (Board of Education) on decision criteria and necessary data/information**



Oregon Legislature Discussions

Overview



Community Engagement

Overview



Board Direction

Direction will inform staff efforts and community engagement planning

Category A

- Should staff consider property outside HTMS catchment area?
- Are there other specific properties staff should evaluate?
- What information will be necessary to make a decision? What are the decision criteria?

Category B

- Should staff continue to investigate Category B?
- What information will be necessary to make a decision? What are the decision criteria?