

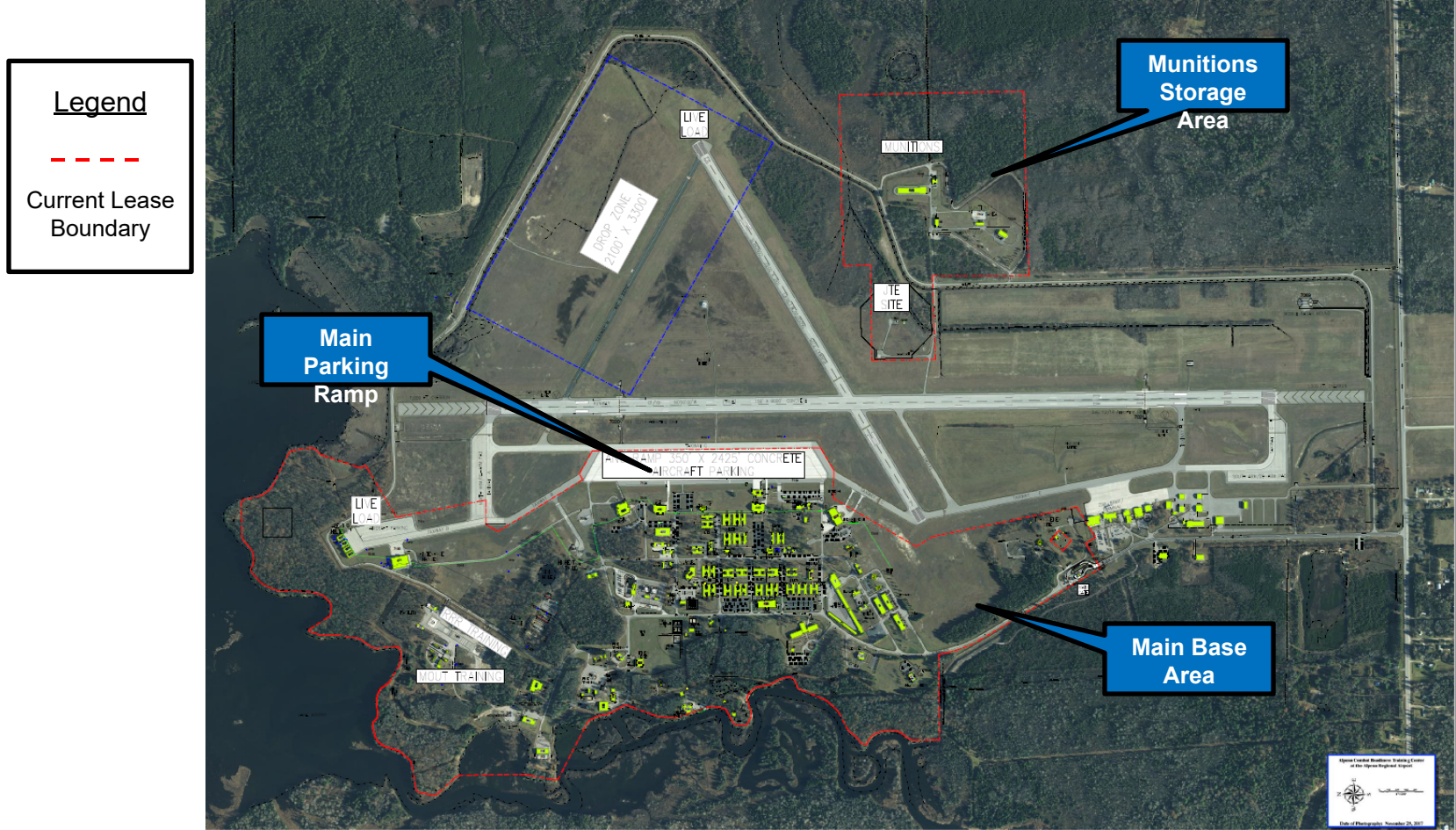
# Alpena County Regional Airport Lease/License Supplemental Agreement



- Mission
- Overview/Facts
- Current Challenge 1 – Joint Use Flying Facilities
- Opportunity 1: Airfield Boundary Line Adjustment
- Current Challenge 2– Austere Training Area for Airmen
- Opportunity 2: Austere Training Area at Alpena Airport
- Way Ahead
- POCs
- Questions

“The CRTC mission is to provide an integrated, year-round, **realistic training environment** (airspace, ranges, instrumentation integration, facilities, and equipment) for units to cost-effectively enhance their combat capability and readiness up to MAJCOM level. Enable users to conduct training which cannot be effectively accomplished or is not available at their home station. **Establish a training arena that approximates a deployed, combat-oriented operating location**, and provide a setting for deployed training, exercises, evaluations, and inspections. Additionally, the CRTCs provide site-specific, unique training exercises, facilities, and services for DoD branches, federal and state law enforcement agencies on a non-interference, cost reimbursable basis. All CRTCs are Joint National Training Capability (JNTC) accredited sites.” –*ANGI 10-110, 24 July 2023*

- Current 50-year lease/license signed in August 2012
  - Identifies ANG leased boundaries and assets, including exclusive use areas
- Airport Joint Use Agreement (AJUA) signed in 2015
  - Identifies how joint use facilities will be operated and maintained



- Current Lease and AJUA language saddles Alpena Airport with maintenance and repair of over 725,000 sq ft of airfield pavements where no FAA/GA requirement exists
  - “The County will be responsible for... Performing any and all maintenance of the Jointly Used Flying Facilities, including but not limited to: Joint sealing, crack repair, surface repairs, airfield markings and repair or replacement of damaged sections of airfield pavement.”
- Since ANG does not own these pavements, ANG does not earn funding or have authority to maintain these assets
- Airfield facilities are degrading and need reinvestment



## Areas proposed for inclusion in boundary adjustment:

\*("Exclusive Use" does not preclude use when necessity dictates)

### Airfield:

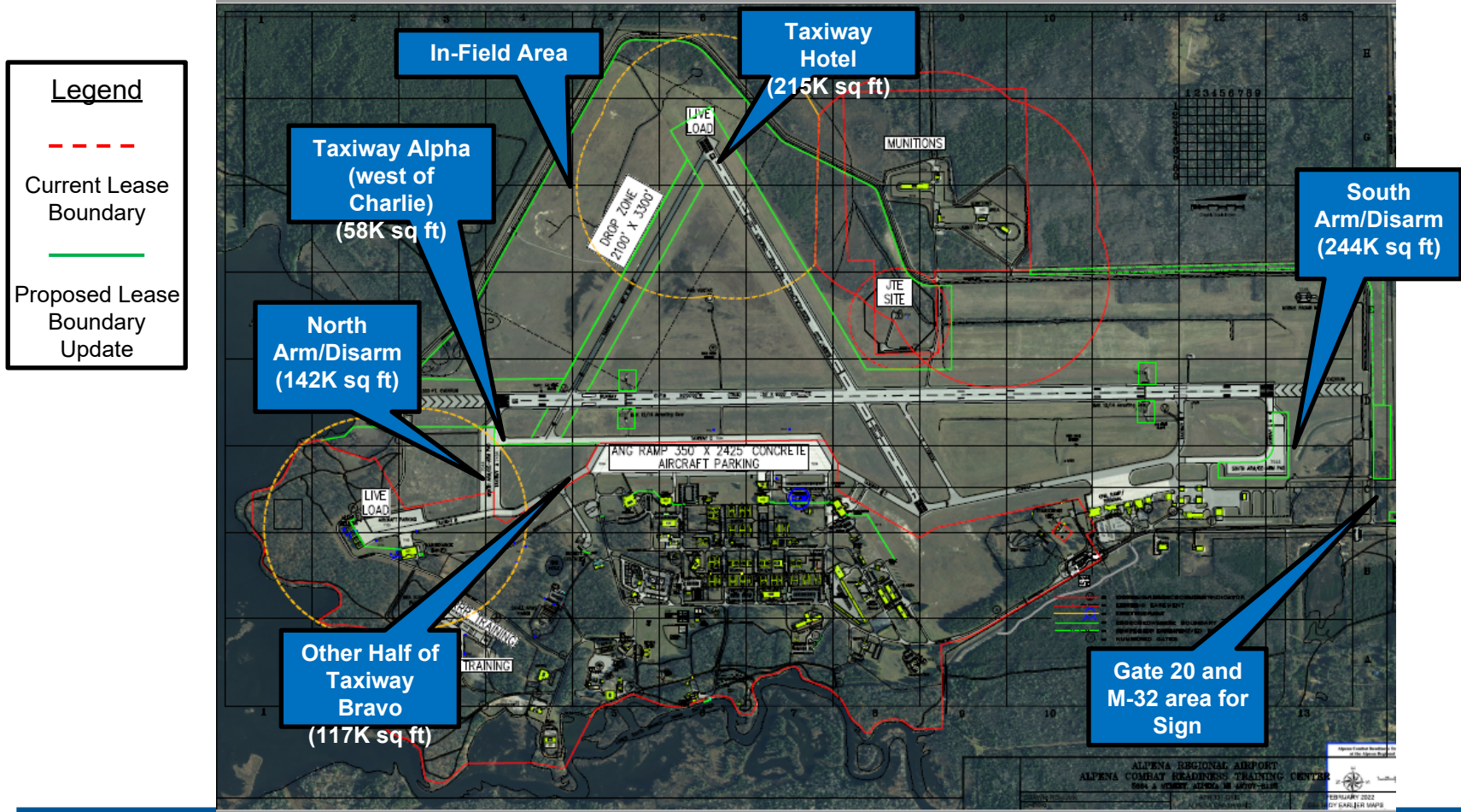
1. Taxiway Alpha west of Taxiway Charlie (Exclusive Use)
2. Taxiway Bravo through to Taxiway Charlie (Exclusive Use)
3. Taxiway Hotel (Exclusive Use)
4. North Arm/Disarm Pad (Exclusive Use)
5. South Arm/Disarm Pad (Exclusive Use)

### Other:

6. Area for Alternate Access at Gate 20 (no permanent buildings planned, just utility corridor for electrical and communications)
  7. Area for Placement of Joint Alpena Airport/CRTC Main Entrance sign along M-32 and Airport Road
  8. Include new Aircraft Arresting Systems
  9. In-field (already a designated drop zone maintained by ANG per AJUA)
-



## Map of Airfield Boundary Line Adjustment

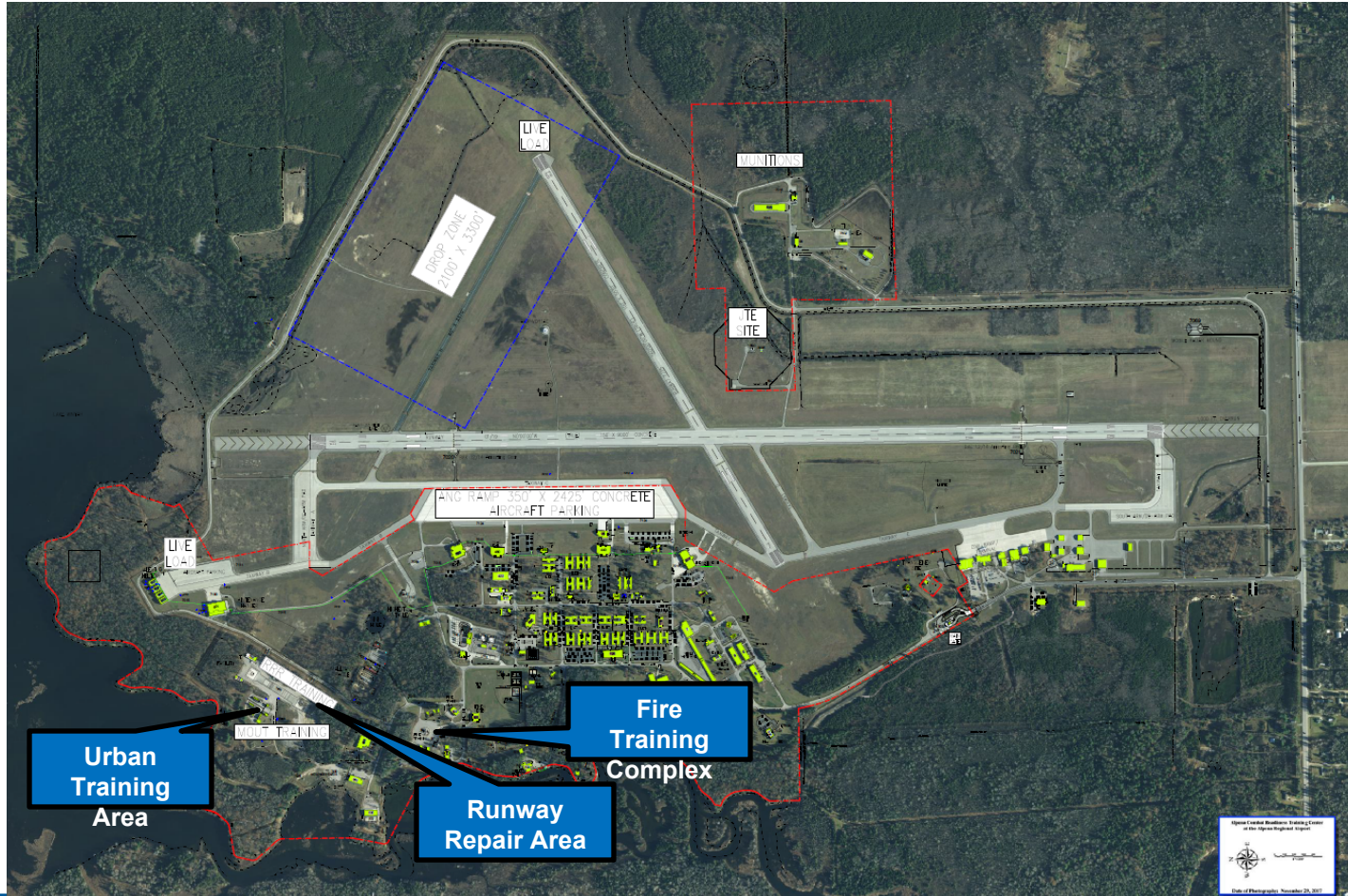


### CRTC Mission (ANGI 10-110):

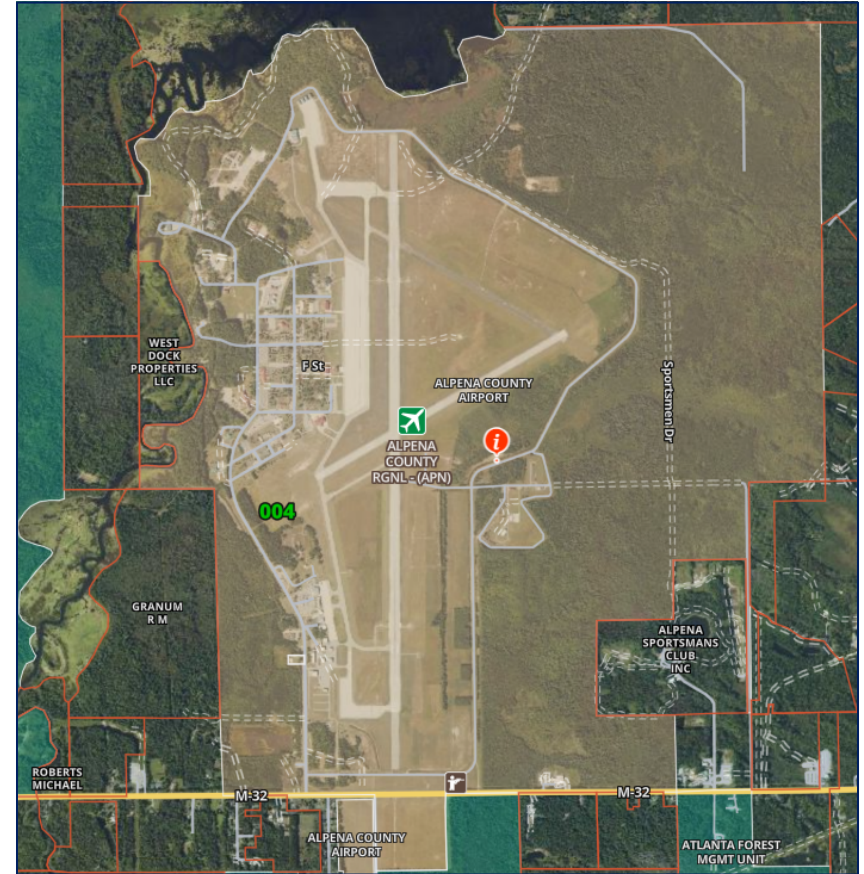
- “Establish a training arena that approximates a deployed, combat-oriented operating location”
- “Enable users to conduct training which cannot be effectively accomplished or is not available at their home station.”
- “Provide a setting for deployed training, exercises, evaluations, and inspections.”

### Current Situation

- Main base area lacks space/austerity to simulate the type of space required (tent setup, base defense, land navigation, etc)
- Undeveloped Area East of Airport:
  - Historically used on an informal agreement basis
  - Capability is not codified, not done in a way that benefits both parties

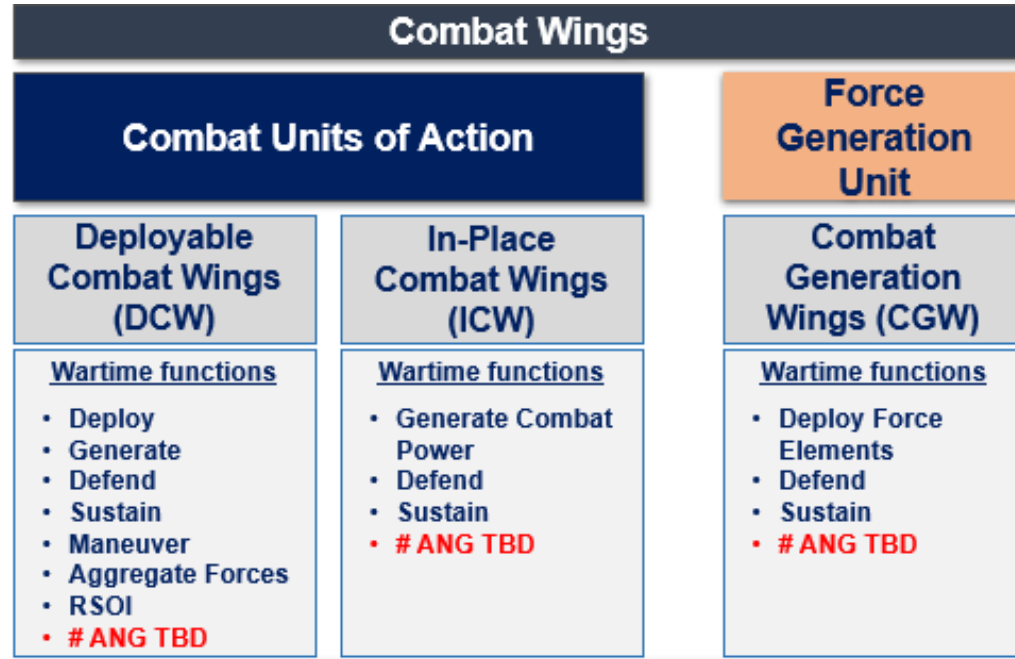


- Alpena County owns a large tract of land east of Alpena Airport
- Convoy training
- Area provides ideal conditions to meet requirements for low impact training in austere environment
- Area historically used for this, but agreement never formalized
- Alpena CRTC is due for master plan update; new areas could be incorporated and NEPA assessed

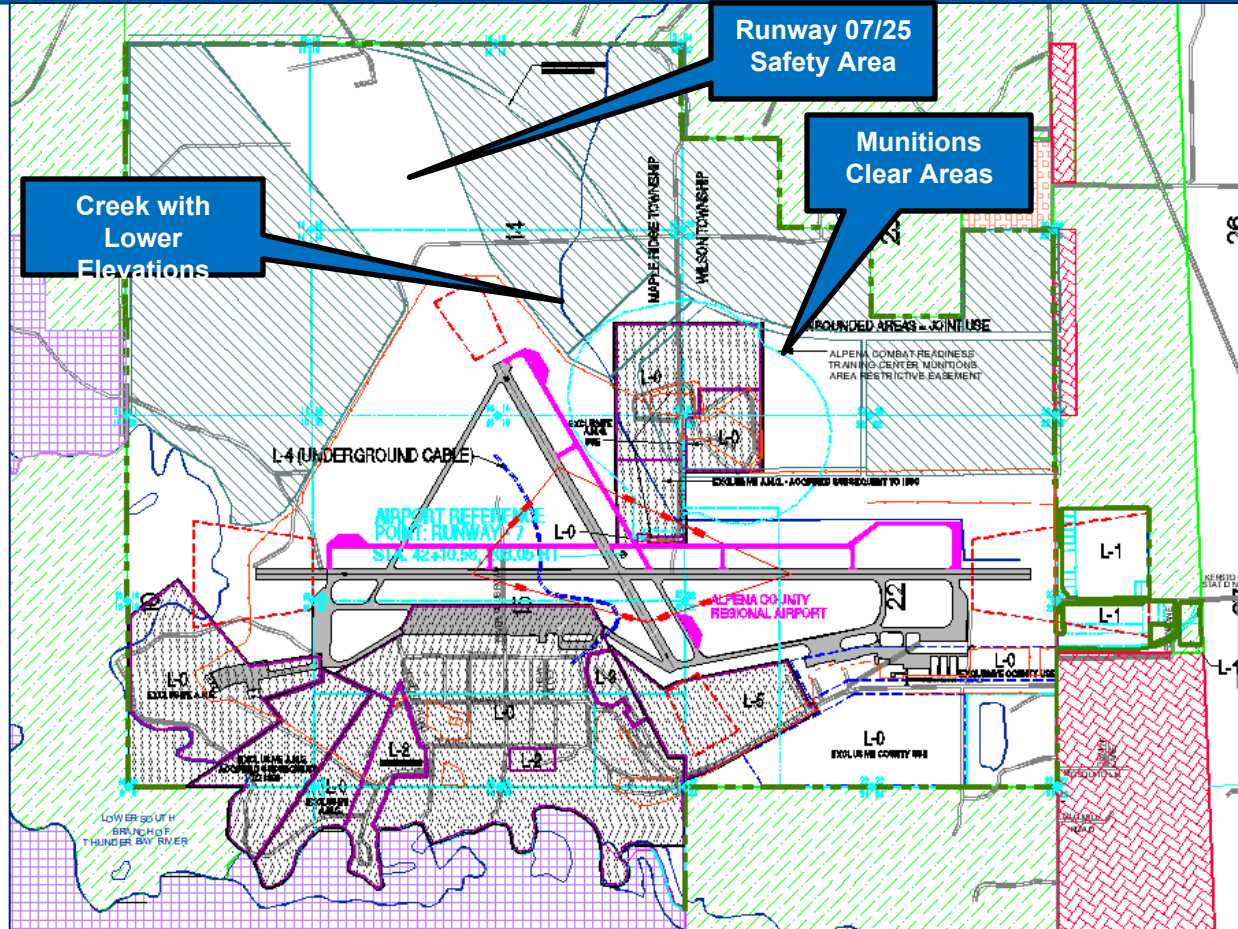


## Types of Training Required

- Bare base set up and tear down
- Land navigation
- Dismounted patrol training
- Convoy training
- Counter UAS training
- Base defense
- Medical field care
- Working with degraded GPS & communications
- Personnel search and rescue
- Military Working Dog training

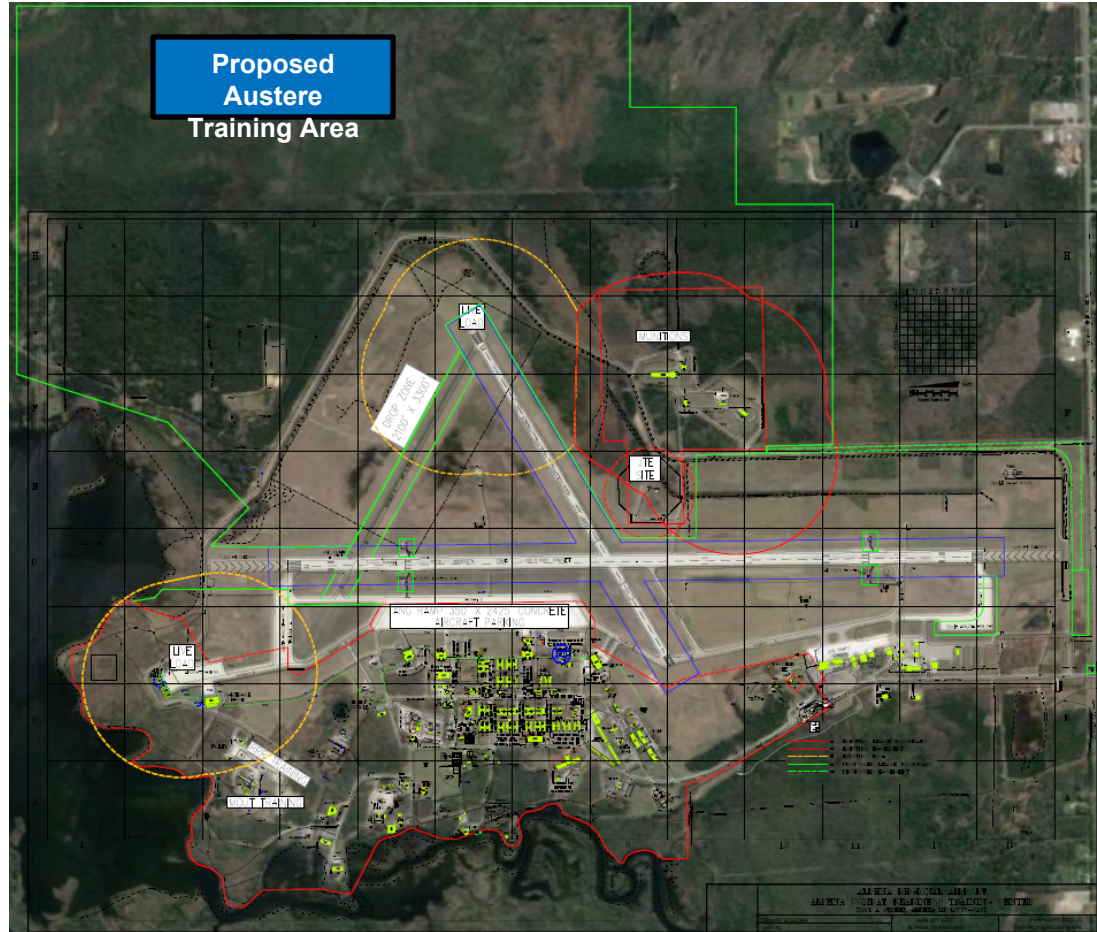


# Map of Airport Layout Plan



**Legend**

- Current Lease Boundary
- Proposed Lease Boundary Update



- County of Alpena concurrence (Facility Commission)
- Michigan National Guard concurrence (TAG)
- National Guard Bureau concurrence (“Table Top Brief”)
- Alpena County Board of Commissioners approval (County Board)
- Memorandum of Concurrence from the landowner.
  - This is a non-binding acknowledgement from the landowner stating that our request is understood, and consideration will be given to secure a modified Lease.
- Lease amendment process begins



BCE: Maj Anthony Hylko  
[anthony.hylko.2@us.af.mil](mailto:anthony.hylko.2@us.af.mil)

DSN 741-6212  
COMM 989-354-6212

DBCE: Capt Cade MacArthur  
[cade.macarthur.2@us.af.mil](mailto:cade.macarthur.2@us.af.mil)

DSN 741-6496  
COMM 989-354-6496

Real Property: Dana Doan  
[dana.doan.3@us.af.mil](mailto:dana.doan.3@us.af.mil)

DSN 741-6360  
COMM 989-354-6360

Environmental: Edward Meltz  
[edward.meltz@us.af.mil](mailto:edward.meltz@us.af.mil)

DSN 741-6278  
COMM 989-354-6278

# Questions

---

