

---

# Panther Pride News

---

News from Mrs. Yount

May 2017  
Go Panthers!

Dear Parents,

As the year ends, parents begin to think about which class their child will be in next year at school. As most of you know we do not take parent requests for teacher/classroom placement. However, we do want to know if there are specific concerns or issues you have about your child to make a good decision in placing your child. If you wish to communicate those concerns you need to pick up a form in the office. You can also call and we will send one home with your child if you are unable to come in for the form. The form will allow you to communicate those concerns so I can consider that when reviewing for final placement. Forms must be turned into the office by June 1<sup>st</sup> for consideration.

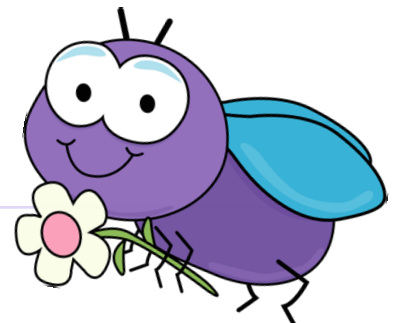
The placement process begins with the regular and special needs teachers at each grade level meeting to determine the best placement for each child. Teachers work together to develop classes that are likely to be successful as a unit when learning. Teachers consider the following information as they place students: Classes will be balanced for academic needs so that all children can receive what they need to be successful. This means having a good span of academic needs and abilities. We also look to balance students' special needs and behavioral needs. We look to see if we can separate students who have had serious social conflict in the past that might be disruptive to learning as school. We try to balance the number of boys and girls and even look to make sure we don't have five kids with the same first name! Please be assured; we place each child carefully in an environment we hope they can learn and grow in. Each child is considered. No choice is made without thought and planning.

Once teachers are finished I review the placement recommendations and then I also compare that with the information the parents provided. Most of the time, students are placed well based on the teacher's knowledge of their students. In some cases, parents will have provided information about something we have not known about or considered and then I may change the placement based on that information. We do not place children based on things like "My child needs to be with his best friend because they have always been in the same class", or "I want Mrs. \_\_\_\_\_ because all of my other children had her."

Please turn in your parent input form no later than June 1<sup>st</sup>, if you wish us to consider any special needs for your child while placing them for next year.

Sincerely,

Heather Yount  
Principal, Fruitdale Elementary School



# DATES TO REMEMBERS

|  |  |             |
|--|--|-------------|
| Teacher Appreciation Week.....           |  | May 1~5     |
| 5th grade visit from Lincoln Savage..... |  | May 03      |
| Book Fair.....                           |  | May 11 ~ 19 |
| Mothers Day.....                         |  | May 14      |
| 2nd grade to Table Rock.....             |  | May 23      |
| 5th grade to Lake Selmac.....            |  | May 25      |
| 1st grade to Wild Life Safari.....       |  | May 25      |
| Memorial Day (no school).....            |  | May 29      |
| Hidden Valley Graduation.....            |  | June 6      |
| 5th grad Moving On 6-7pm.....            |  | June 13     |
| 5th grade Jetboat trip.....              |  | June 14     |
| Lincoln Savage Moving On.....            |  | June 14     |
| Kindergarten Moving On.....              |  | June 15     |
| Last Day of School.....                  |  | June 15     |



## Library News

Get ready for our final Scholastic Book Fair scheduled for Friday May 12 - Friday May 19. This one is a Buy-One-Get-One-Free so that you can stock up for summer reading.

Please take advantage of the resources offered through the **Library** tab on our district webpage. You can search our collection at the **Destiny** icon; find an AR level at **arbookfind.com**; access the **World Book** and **National Geographic Online** and explore everything from basic computer skill tutorials to practice tests for AP courses, the GRE and the SAT at the **Learning Express Library**. **Learn 360** offers a multitude of resources for project-based learning and research. Access it at [www.learn360.com](http://www.learn360.com) –

**username: Fruitdale - password: soesd. World Book Online** ([www.worldbookonline.com](http://www.worldbookonline.com)) is a fantastic resource that is brought to you free through a subscription by our school district. Access at school is simple, from home you will need to enter: **username: soesd password: worldbook.**

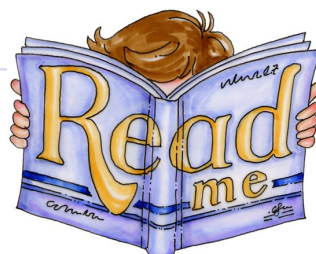
Your **BOX TOPS FOR EDUCATION** donations are very important. Each box top is 10¢ and they can really add up. Please keep them coming. The class that donates the most will have a party at the end of the year. It is easier for me to count them if they are trimmed and not past their expiration date.

The Josephine Community Libraries offers lots of activities for students. You may have your own library card and participate in *Young Master Gardeners, K9 Reading*

*Buddies* and *Storytime and Crafts*. Visit them @ <https://josephinelibrary.org>. There will be many exciting summer activities and you may visit me there Tuesday afternoons in the Children’s Library.

**I want your students to be able to check out books. Please make sure that books are returned and fines are paid for lost or damaged items. I am happy to take payments.**

**If you are a gardener and have the time and inclination please see me. I need help weeding our perennial/butterfly garden. Thanks!**



## Spelling Bee

Fruitdale had a spelling bee at school and took the top 2 spellers to compete at the district level. The students that participated from Fruitdale were Dezmond Haley and Erik McBroom. They went up against 13 other schools in our district. Erik McBroom took 1st place in the Primary grades 1-3 division! Congradulation Erik, good job representing Fruitdale! We are very proud of Erik and Dezmond!!!



## Lost and Found

Our lost and found is once again over flowing. Please make sure that you check to see if your child has any missing items. The lost and found is located in side the school in front of the cafeteria. Thank you!

## Parking Lot Safety

### Please slow down!

Remember the speed limit is 15 from the time you turn in from Fruitdale Drive. We have many student that walk to and from school every day and we have some people that are driving too fast. Thank you for being safe for our kids!

## THANK YOU

We would like to thank the parent volunteers. They made our staff a wonderful dinner for one of our conference days. We loved the soups, rolls, cornbread, salad and dessert!

## 5th grade Summer Academy

Lincoln Savage is offering a Summer Academy for in-coming 6th grade students. Students will be working with grade level teachers on essential skills to prepare them for middle school academics.

School hours are Monday through Thursday from 8:00am to 1:00pm starting June 26, 2017. Transportation, breakfast and lunch will be provided.

Registration is June 16, from 8:00am to 1:00pm at Lincoln Savage. If you have any questions please contact Lincoln Savage Middle School at 541-862-2171.



