



Superintendent Progress Report on Performance Goals



Jon Bartelt, Superintendent
Bloomington School District 13
January 28, 2019



Where This Begins

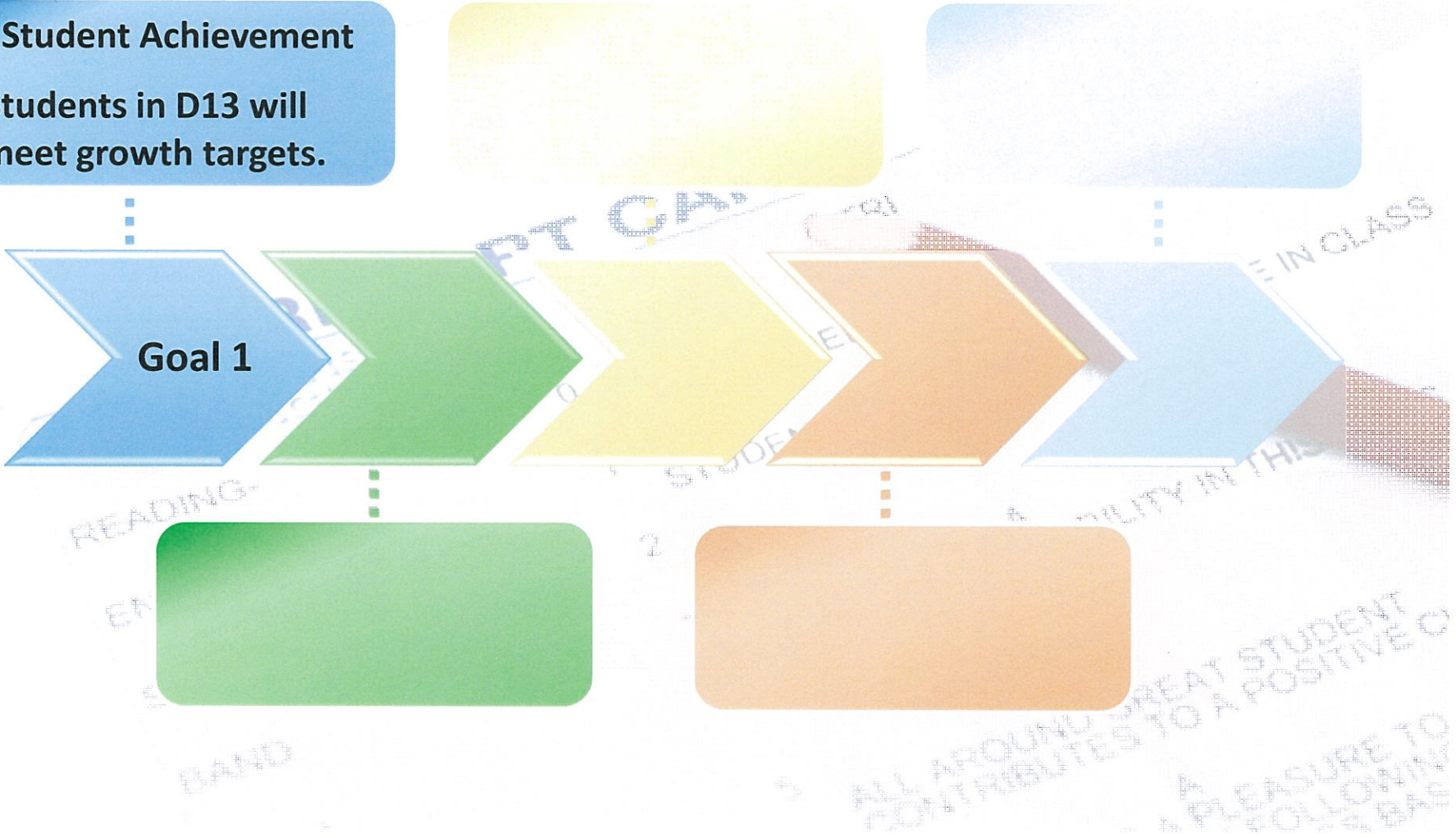
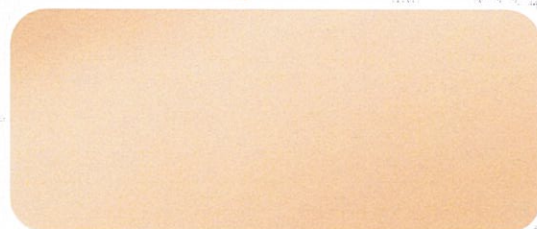
The Board Evaluates the Superintendent





2018-19 Performance Goals

Student Achievement
Students in D13 will meet growth targets.





Student Achievement Based on Winter MAP Results (Reading and Mathematics)



Bloomington School District 13 Superintendent Performance Goals

Rationale:

- *Student achievement and growth is the top priority of Bloomington School District 13*
- *The Measures of Academic Progress has been utilized for years in the District to measure the annual growth of students*
- *School Boards must include a student growth component into the Superintendent's performance*
- *It is aligned with the District's Strategic Plan and core values*
- *The action plan supports the ongoing achievement of this goal*

Evidence: (Based on Spring MAP scores)

School District 13 Reading/Mathematics	2015-16	2016-17	2017-18 Last Year	2018-19 (Target)	2018-19 (Winter MAP)
All Students	+0.03	-0.07	+0.04	Between -0.29 to +0.29	-0.11
DuJardin Elementary School	+0.44	-0.17	-0.04	Between -0.29 to +0.29	-0.11
Erickson Elementary School	-0.03	-0.11	-0.02	Between -0.29 to +0.29	-0.08
Westfield Middle School	-0.22	+0.04	+0.15	Between -0.29 to +0.29	-0.14



2018-19 Performance Goals

Student Achievement
Students in D13 will meet growth goals.



Meaningful student learning experiences
Students will be engaged in collaborative, authentic learning.





Meaningful Learning Experiences for Students



R

EN

SOC

BAND

3

SHOW

4

5

ALL AROUND GREAT STUDENT
CONTRIBUTES TO A POSITIVE C
A PLEASURE TO
FOLLOWING
S BAS

N CLASS



Meaningful Learning Experiences for Students

In the District, some samples of meaningful learning experiences for students include:

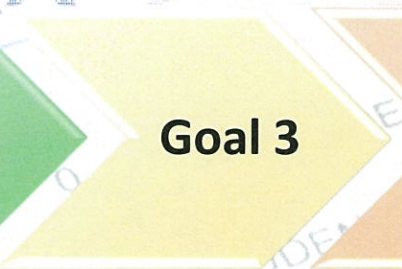
- Learning the principles of equity and social justice in multi-age groups in Eagle's Nest activities at Erickson;
- Demonstrating an understanding of marketing and sales in the development of a breakfast cereal box in Art at Westfield;
- Teaching adults the use of video editing tools to enhance video communication efforts at DuJardin.



2018-19 Performance Goals

Student Achievement
Students in D13 will meet growth goals.

Student Centered Learning Environments
Students also having opportunities to lead instruction for their peers.



Meaningful Learning Experiences for Students
Students will be engaged in collaborative, authentic learning.





Student Centered Learning

- Allows for greater engagement in learning;
- Enables students to be creative, critical thinkers;
- Provides flexibility in instruction for the teacher





Student Led Instruction



- Helps Synthesize theory and practice through application;
- Helps the teacher act more as a facilitator of the learning;
- Empowers students in their own learning.



Student Centered and Led Instructional Practices



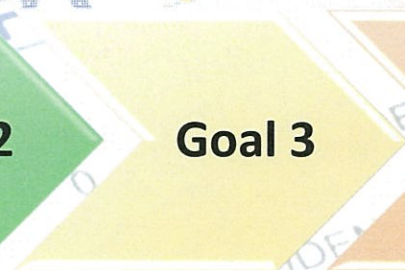
Ms. Cyndi Bringer, Drama, Westfield Middle School



2018-19 Performance Goals

Student Achievement
Students in D13 will meet growth goals.

Student Centered Learning Environments
Students also having the opportunity to lead instruction for their peers.



Meaningful Learning Experiences for Students
Students will be engaged in collaborative, authentic learning.

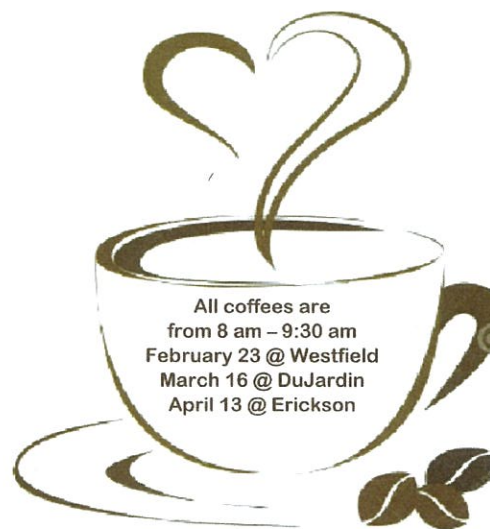
Communication and Collaboration
D13 will listen to the needs of the community.



Communication and Collaboration

- Events scheduled will reflect face to face chances for listening and receiving direct feedback;
- Events scheduled include staff and community coffees, calendar focus group, and community forums.

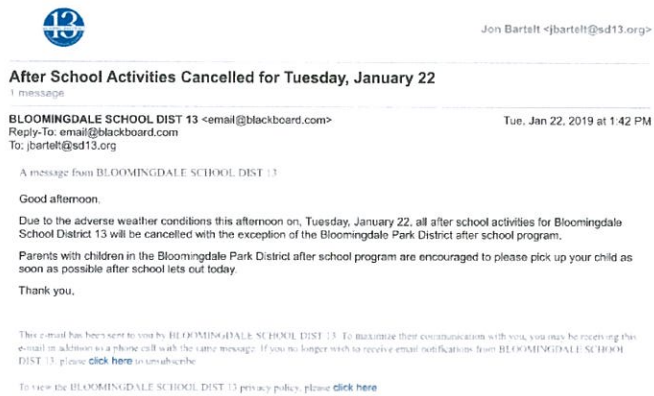
Community Coffee with
Superintendent Dr. Jon Bartelt



We hope to see you there!



Communication and Collaboration



- Video messages will be developed and shared for the purpose of informing the community;
- Email and text messaging will also be employed.



Communication and Collaboration

- Specific follow up steps will be offered to the community after receiving the feedback
- Short surveys will be used to determine the effectiveness of this process



2018-19 Performance Goals

Student Achievement

Students in D13 will meet growth goals.

Student Centered Learning Environments

Students also having the opportunity to lead instruction for their peers.

Teacher Compensation

Revisit compensation with attention to the sustainability of all resources over time.

Goal 1

Goal 2

Goal 3

Goal 4

Goal 5

Meaningful Learning Experiences for Students
Students will be engaged in collaborative, authentic learning.

Communication and Collaboration
D13 will listen to the needs of the community.



Teacher Compensation

- How do we compare to other districts in salary and benefits that are most like us;
- What have we accomplished in the past to move us to the point where we are today?





Teacher Compensation

Other factors or priorities that must be included:

1. Student Enrollment (increase, decrease, stable);
2. Available and usable learning spaces;
3. Program changes sought by the community;
4. Ongoing professional development of the staff



My Learning Journey...

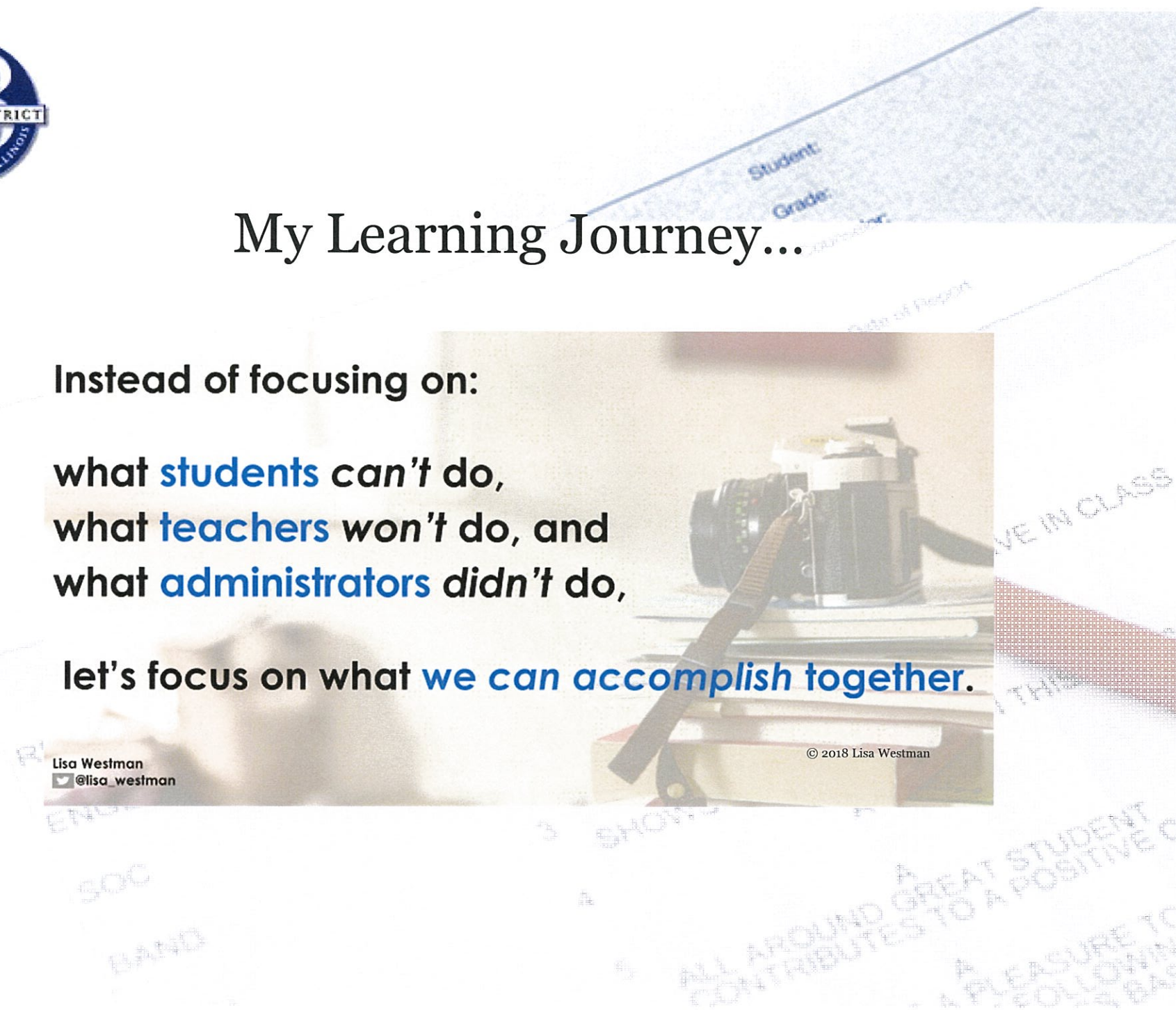
Instead of focusing on:

what **students** can't do,
what **teachers** won't do, and
what **administrators** didn't do,

let's focus on what **we can accomplish together.**

Lisa Westman
@lisa_westman

© 2018 Lisa Westman





Questions?

