

SAP GOAL AND MEASURES

ACADEMICS

District Growth Areas:	password01
<ul style="list-style-type: none"><li>Ensuring the continued development of curriculum across all content areasfidelity and uniformity across the district</li><li>Support a common assessment system to measure student learning</li><li>Supporting staff to better use assessment data to make instructional decisions and determine the effectiveness of strategies being implemented</li><li>Support universal preschool program</li></ul>	<ul style="list-style-type: none"><li>Ensuring the continued development of curriculum across all content areas</li><li>Support a common assessment system to measure student learning</li><li>Supporting staff to better use assessment data to make instructional decisions and determine the effectiveness of strategies being implemented</li><li>Support universal preschool program</li></ul>

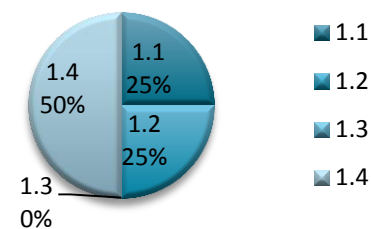
HUMAN CAPITAL

District Growth Areas:	School Growth Areas:
<ul style="list-style-type: none"><li>Recruit highly qualified staff</li><li>Professional Development will be imbedded and driven by staff or demonstrated student need</li></ul>	<ul style="list-style-type: none"><li>Recruit highly qualified staff</li><li>Professional Development will be imbedded and driven by staff or demonstrated student need</li></ul>
	<ul style="list-style-type: none"><li>0</li><li>0</li></ul>

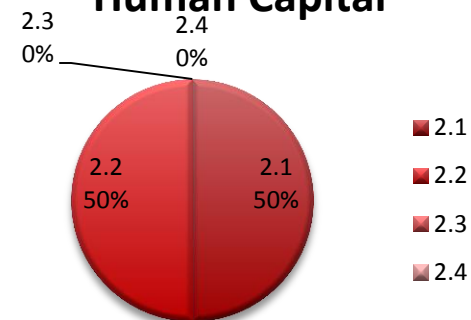
OPERATIONS	
<i>District Growth Areas:</i>	<i>School Growth Areas:</i>
<ul style="list-style-type: none"><li>Supporting technology with the available funding</li></ul>	<ul style="list-style-type: none"><li>Supporting technology with the available funding</li></ul>
<ul style="list-style-type: none"><li>Support the integrated use of technology in all schools</li></ul>	<ul style="list-style-type: none"><li>Support the integrated use of technology in all schools</li></ul>
<ul style="list-style-type: none"><li>Support Business Management Services</li></ul>	<ul style="list-style-type: none"><li>Support Business Management Services</li><li>0</li></ul>
CULTURE AND CLIMATE	
<i>District Growth Areas:</i>	<i>School Growth Areas:</i>
<ul style="list-style-type: none"><li>Support continued integration of PBIS in all schools</li><li>Increase parent involvement and feedback</li><li>Addressing student/family transiency and illegal</li></ul>	<ul style="list-style-type: none"><li>Support continued integration of PBIS in all schools</li><li>Increase parent involvement and feedback residency issues</li><li>Addressing student/family transiency and illegal residency issues</li><li>0</li></ul>

# Monthly Statistics Report

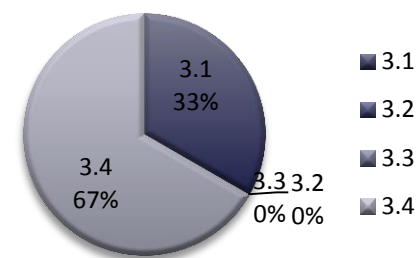
## Academics



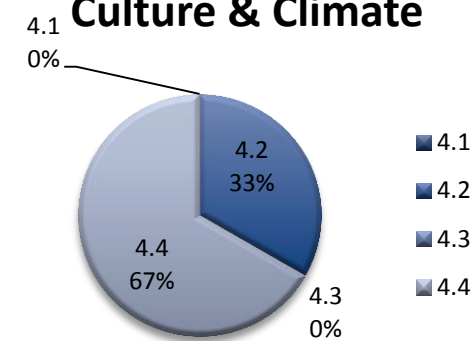
## Human Capital



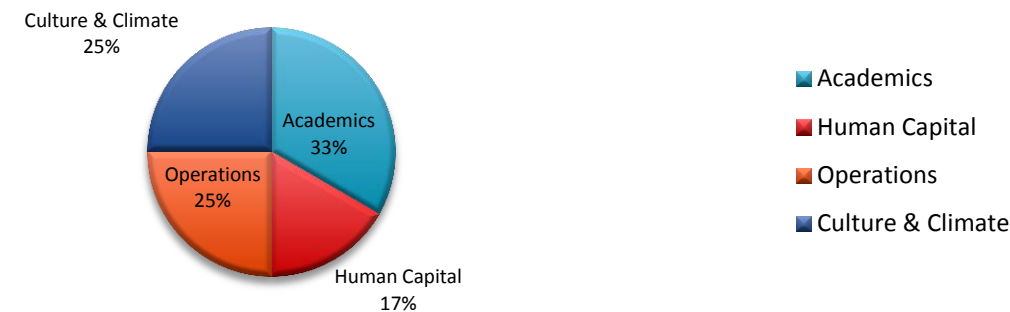
## Operations



## Culture & Climate



## Strategic Plan





	Indicator	3.1	3.2	3.3	3.4	Date Completed		Operations
Operations					✓			Rescheduleing Turf Field Meeting
					✓			Reviewed Alliance District Funding
	✓							Team working on Technology Grant

	Indicator	4.1	4.2	4.3	4.4	Date Completed		Culture and Climate
Culture and Climate					✓			Attended CAPSS Board of Directors Meetings
					✓			Conducted SCASA Meeting
		✓						Held Parent Meeting to discuss Edgenuity
								Continued PBIS Training