

First 5 RC Landscape Summary: Developmental Delays and Autism

Screening, Treatment, Referrals and Linkage to Services

A presentation to First 5 Riverside County's Advisory Committee to the Commission
Kristin Gist March 13, 2024

Acknowledgements: Noah Kim and Joe Parsons, MPP 2nd year interns from UCR



How can we
identify,
support, and
protect our
most
vulnerable
children with
developmental
needs?

Methodology



Developed survey based upon conversations with 30+ stakeholders

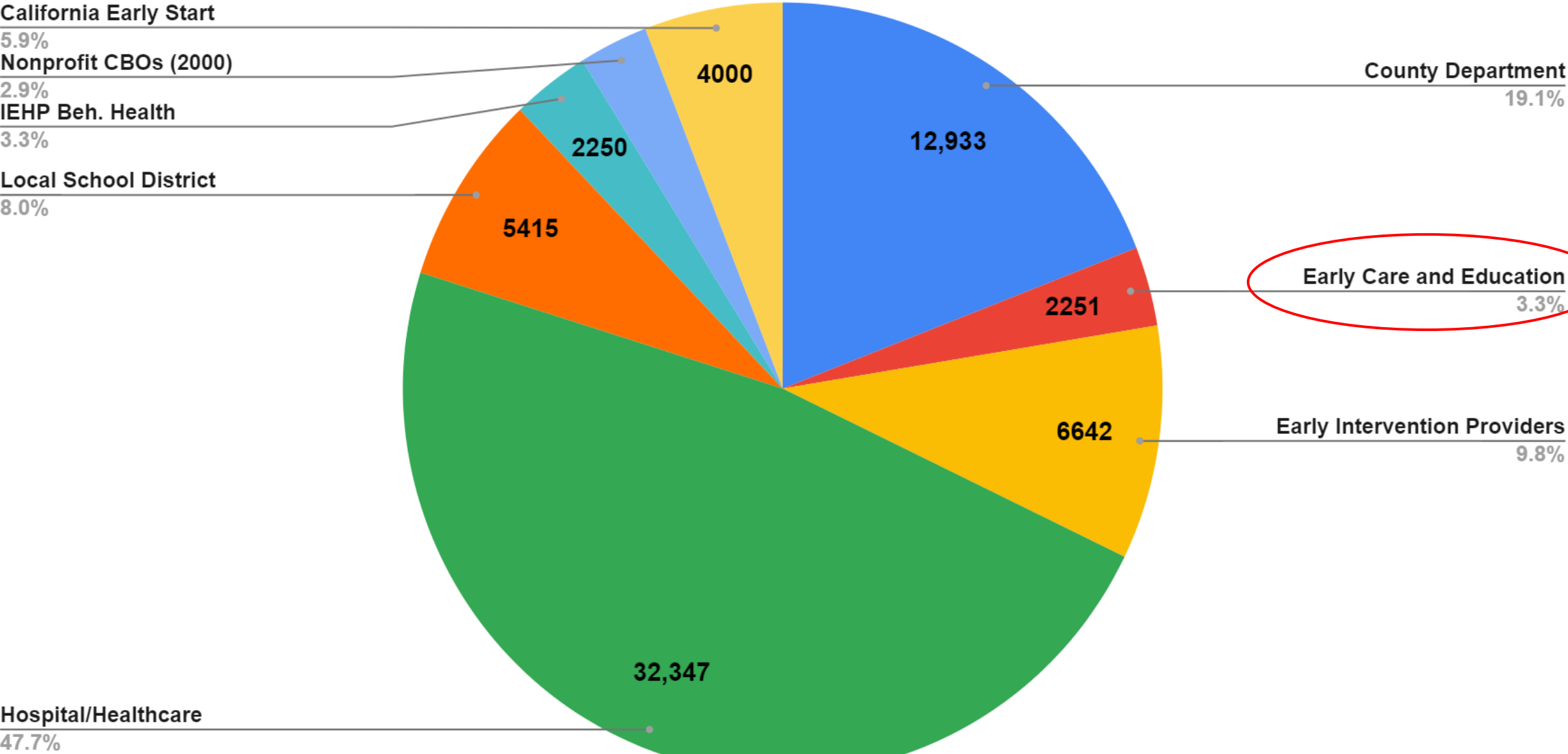


Distributed 150 surveys (direct) and others pushed to groups (e.g., ECE). Total 116 responded

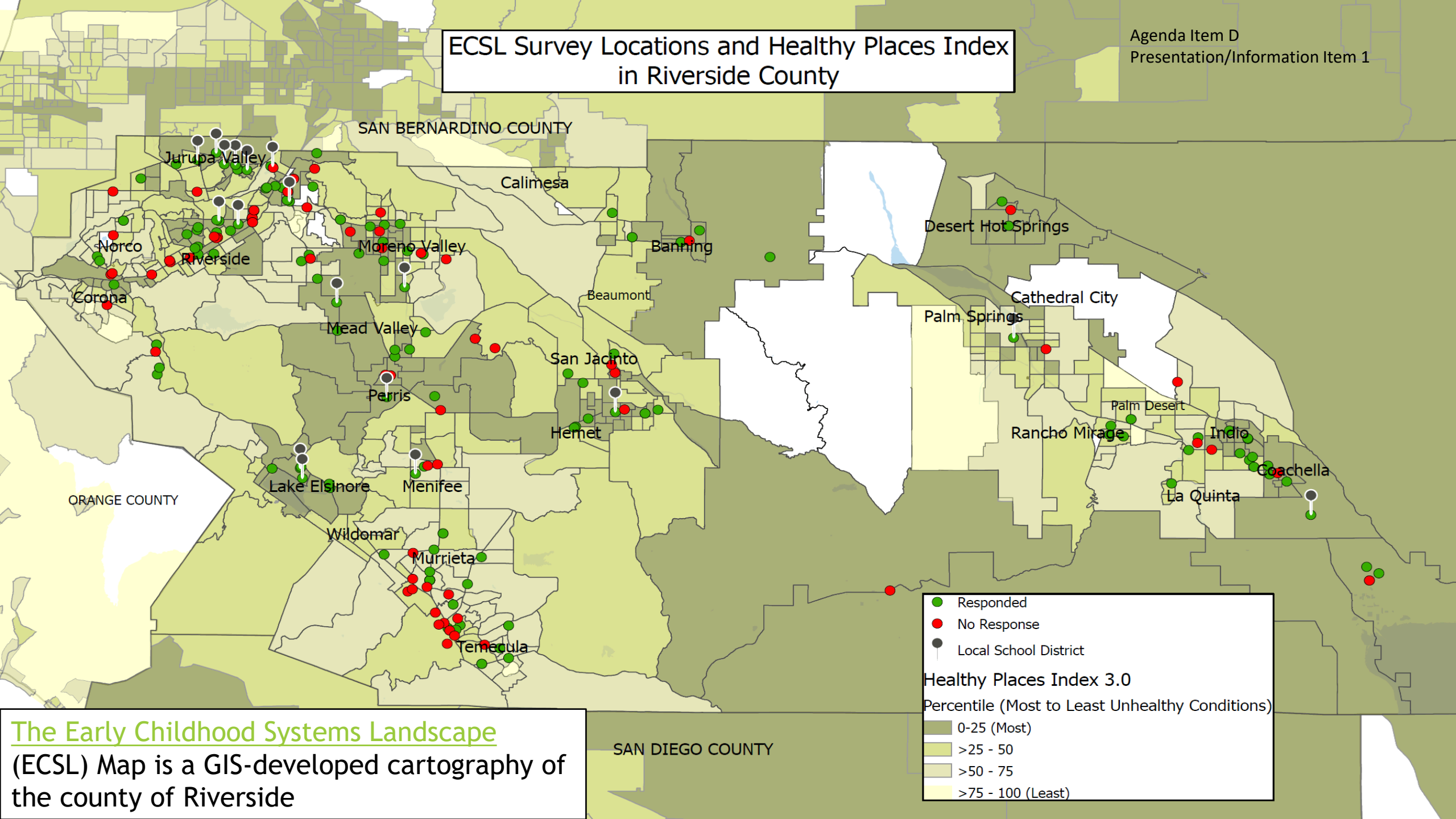


Responders included: Administrators, Early Childhood Educators, Mental Health Therapists, Developmental Therapists (Speech, OT, PT, ABA) & MDs

Children Served by Organization Type (0-5 Years)



ECSL Survey Locations and Healthy Places Index in Riverside County

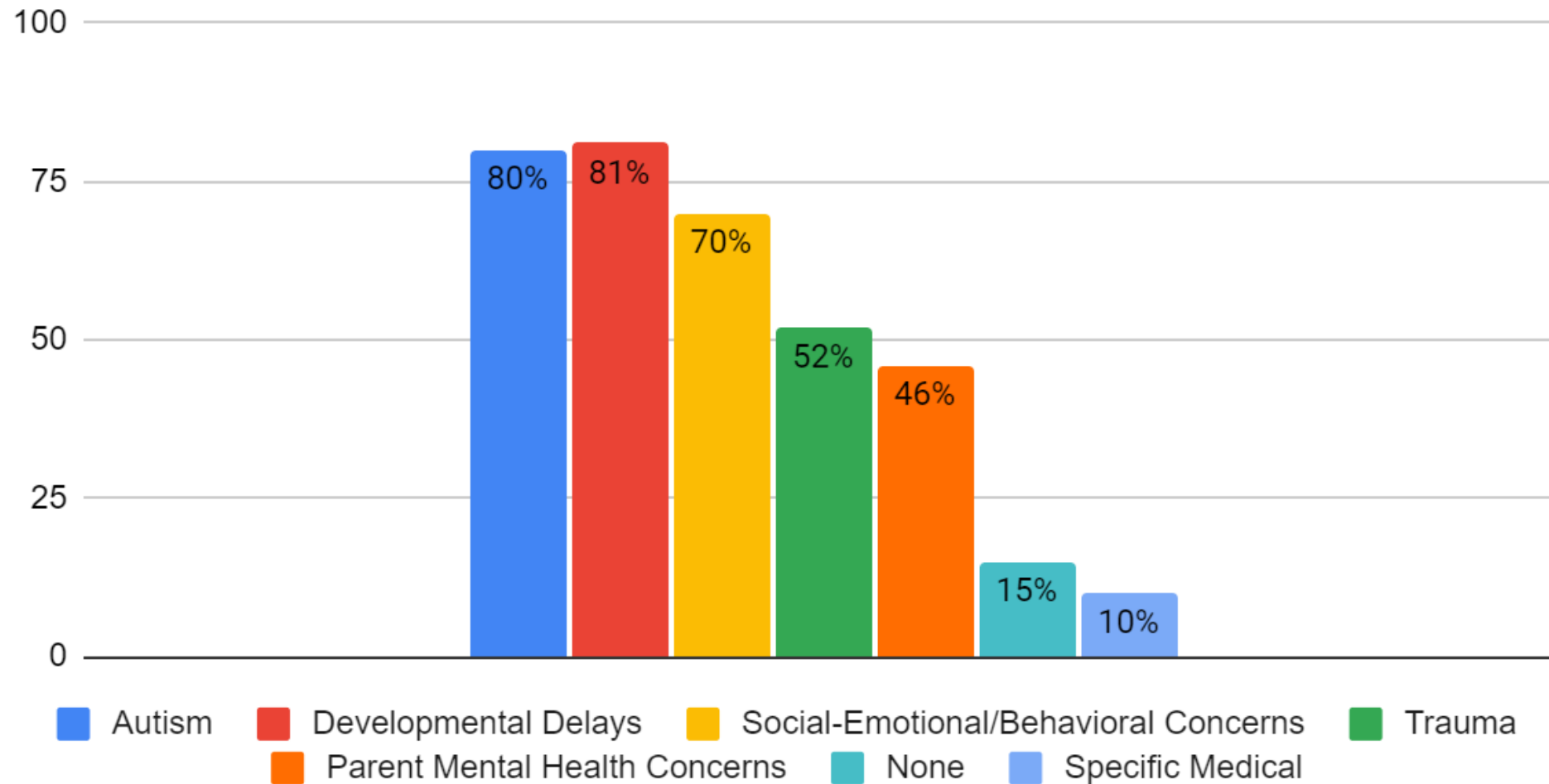


The Early Childhood Systems Landscape
(ECSL) Map is a GIS-developed cartography of
the county of Riverside

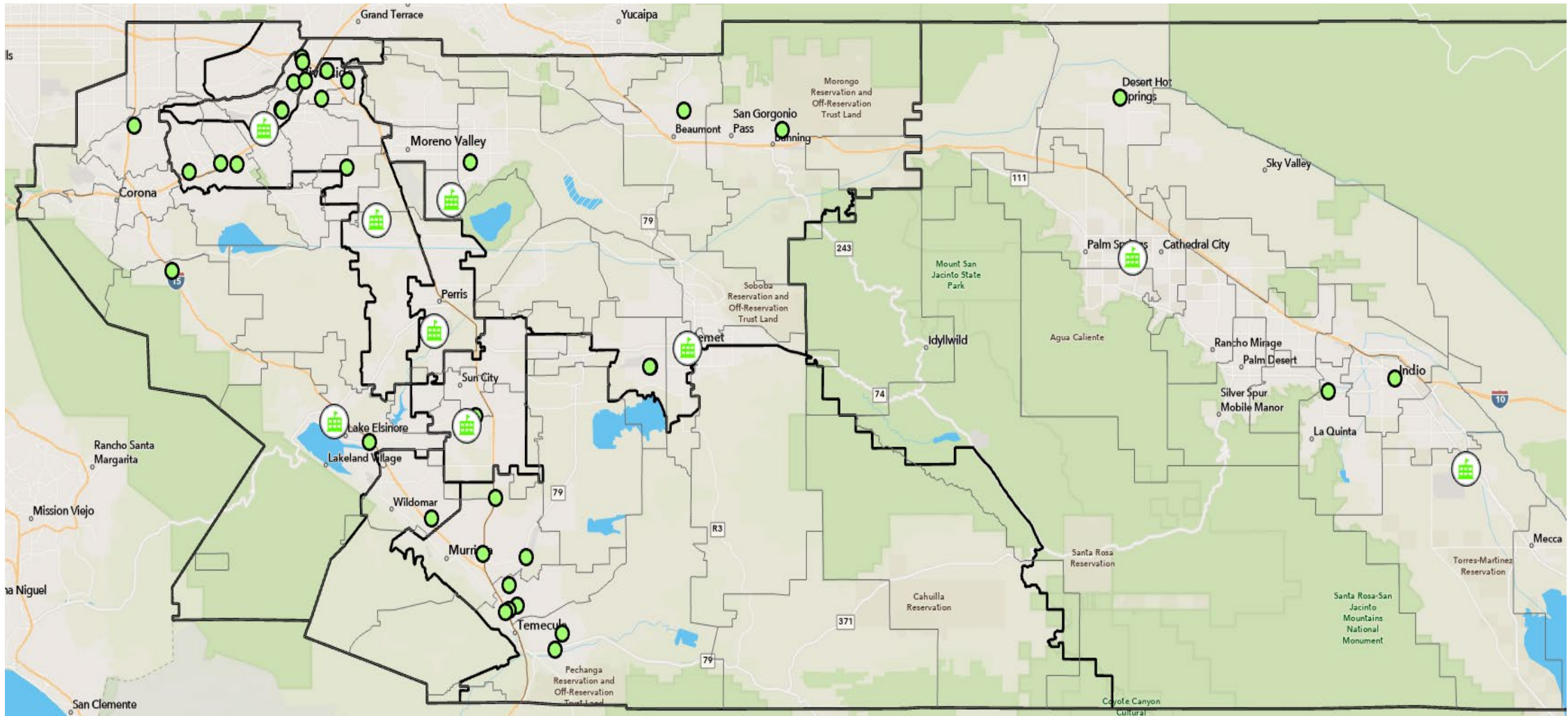
Survey: Areas of focus for treatment

- ▶ Autism
- ▶ Other Developmental Delays and Disorders
- ▶ Social-Emotional/Behavioral
- ▶ Trauma
- ▶ Parent Mental Health

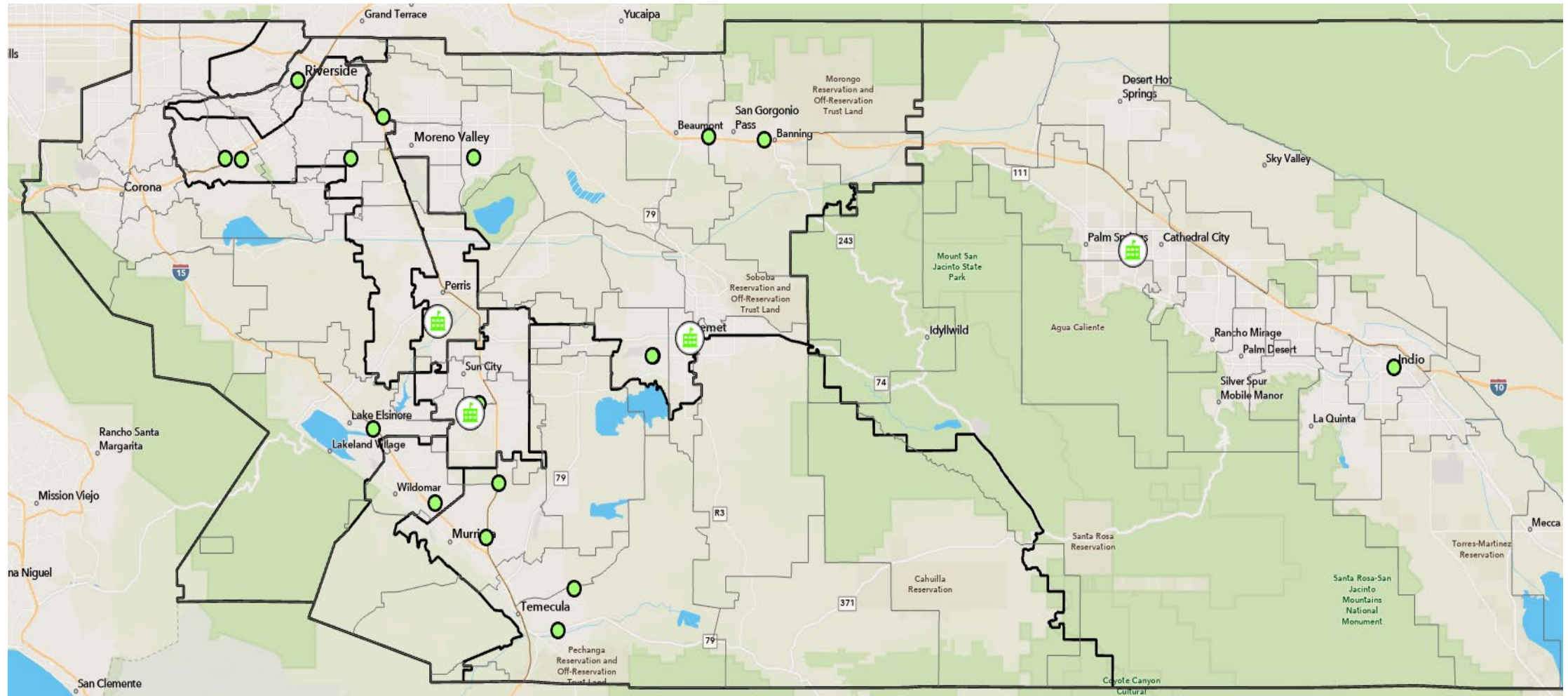
Do you serve children experiencing, at risk for, or diagnosed with any of the following?



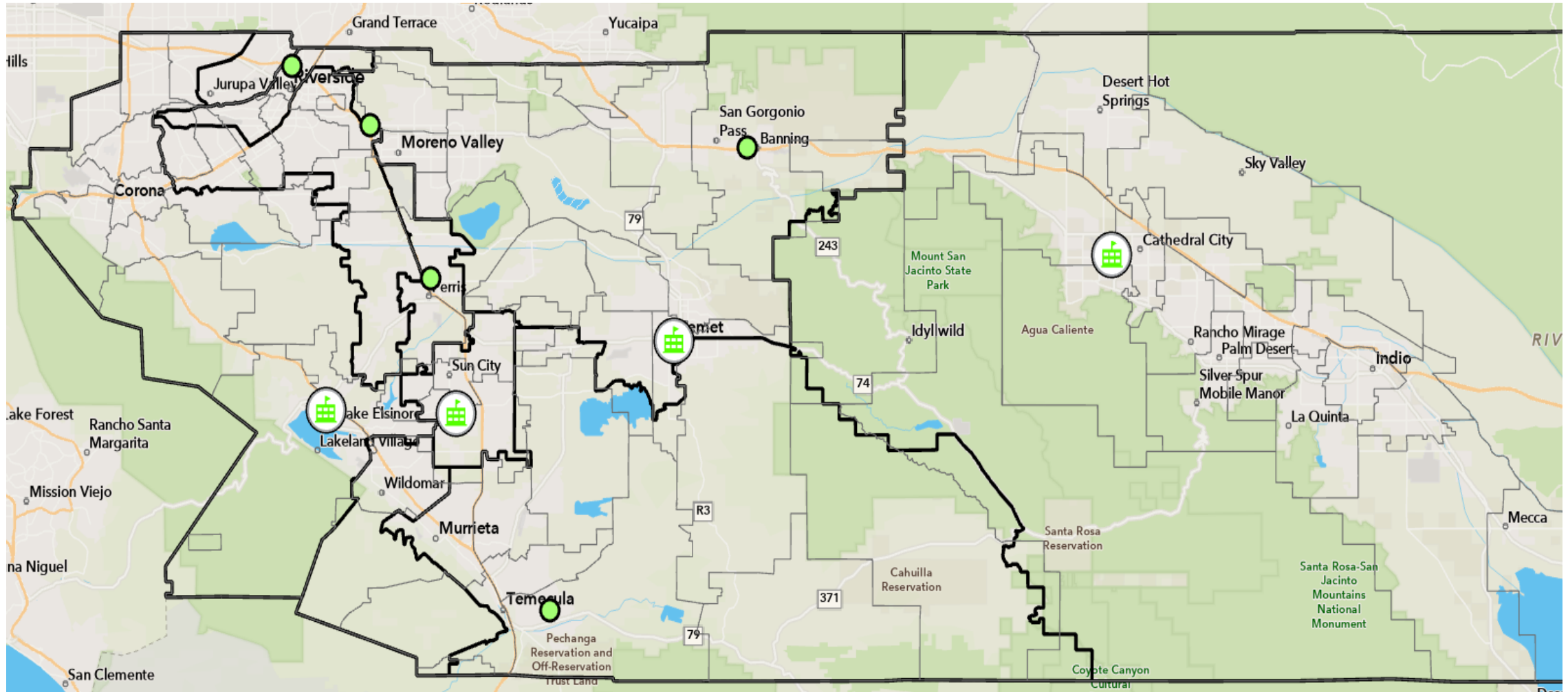
Autism treatment



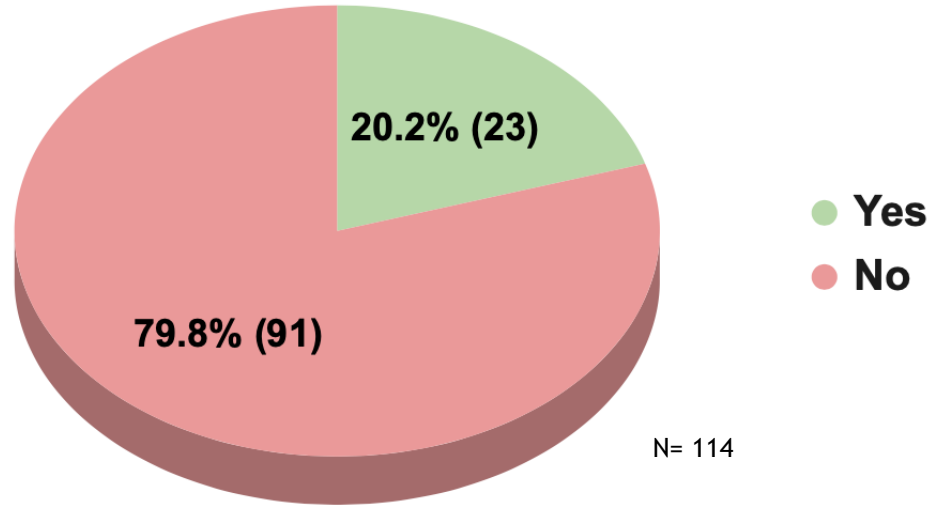
Trauma treatment



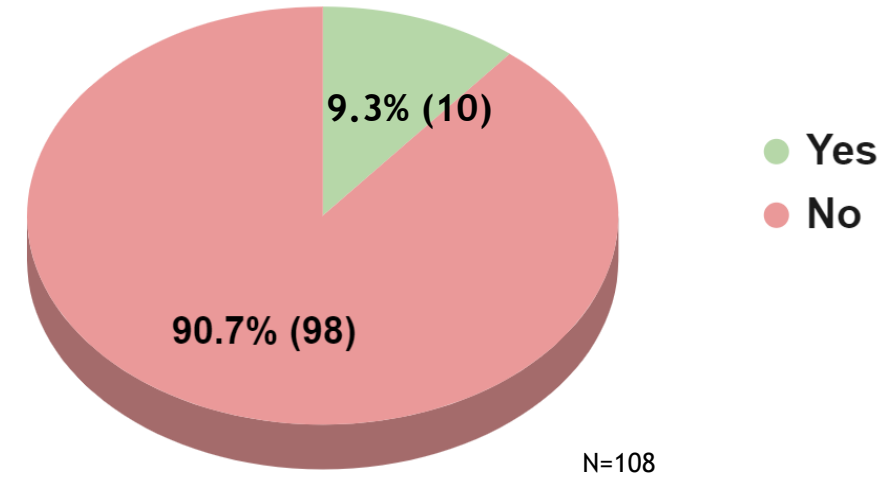
Parent mental health treatment



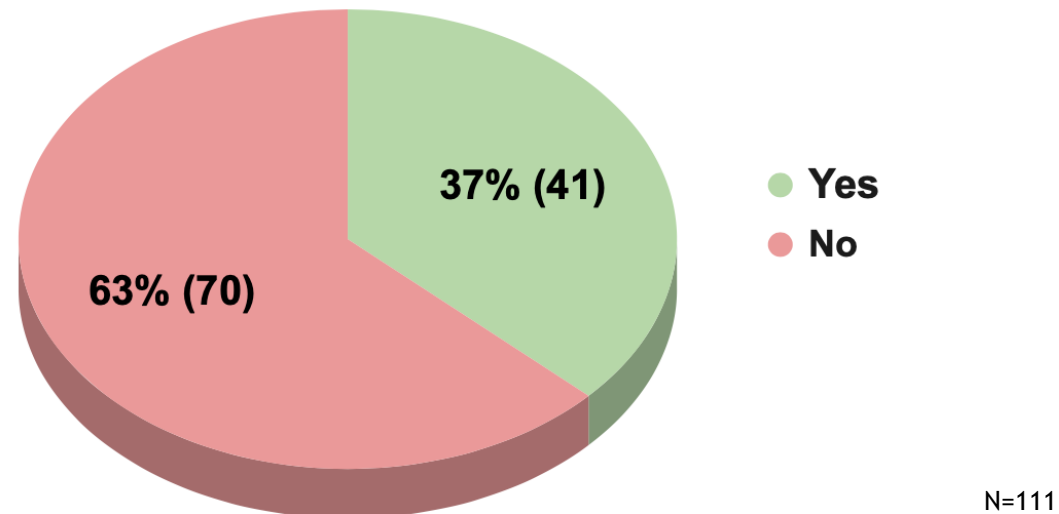
Do you provide direct services for trauma?



Do you provide direct services to treat parent mental health?



Do you provide direct services to evaluate and treat children with autism?



*Most programs provide care coordination and parent education whether autism is treated or not

Survey: Continuum of services

- ▶ Screening
- ▶ Referrals
 - ▶ Provider concerns around barriers
 - ▶ Provider ideas for improvement
- ▶ Linkage to services

Screening must occur to identify children who need services

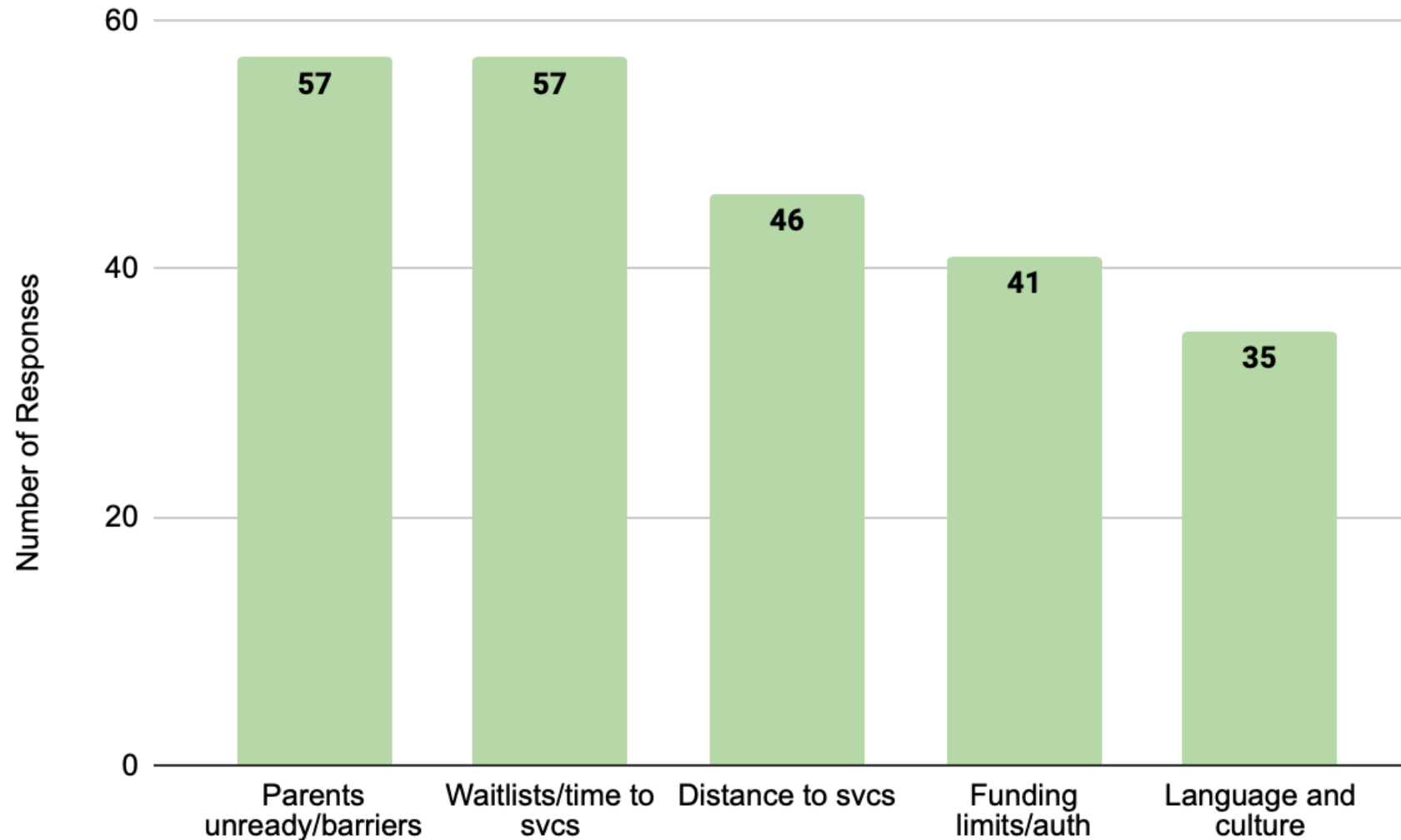
Of 116 respondents:

- ▶ Nearly all who screen use the ASQ3 and many use the ASQ SE
- ▶ 55 screen for autism and social-emotional concerns, but only 12 (10%) use an autism specific screening tool
 - ▶ This might impact the type of services offered
- ▶ Few offer screening for Adverse Childhood Events (ACE), but many are serving these children
- ▶ Only HealthySteps and some medical practices routinely screen for parent mental health, but many serve children whose parents have mental health concerns

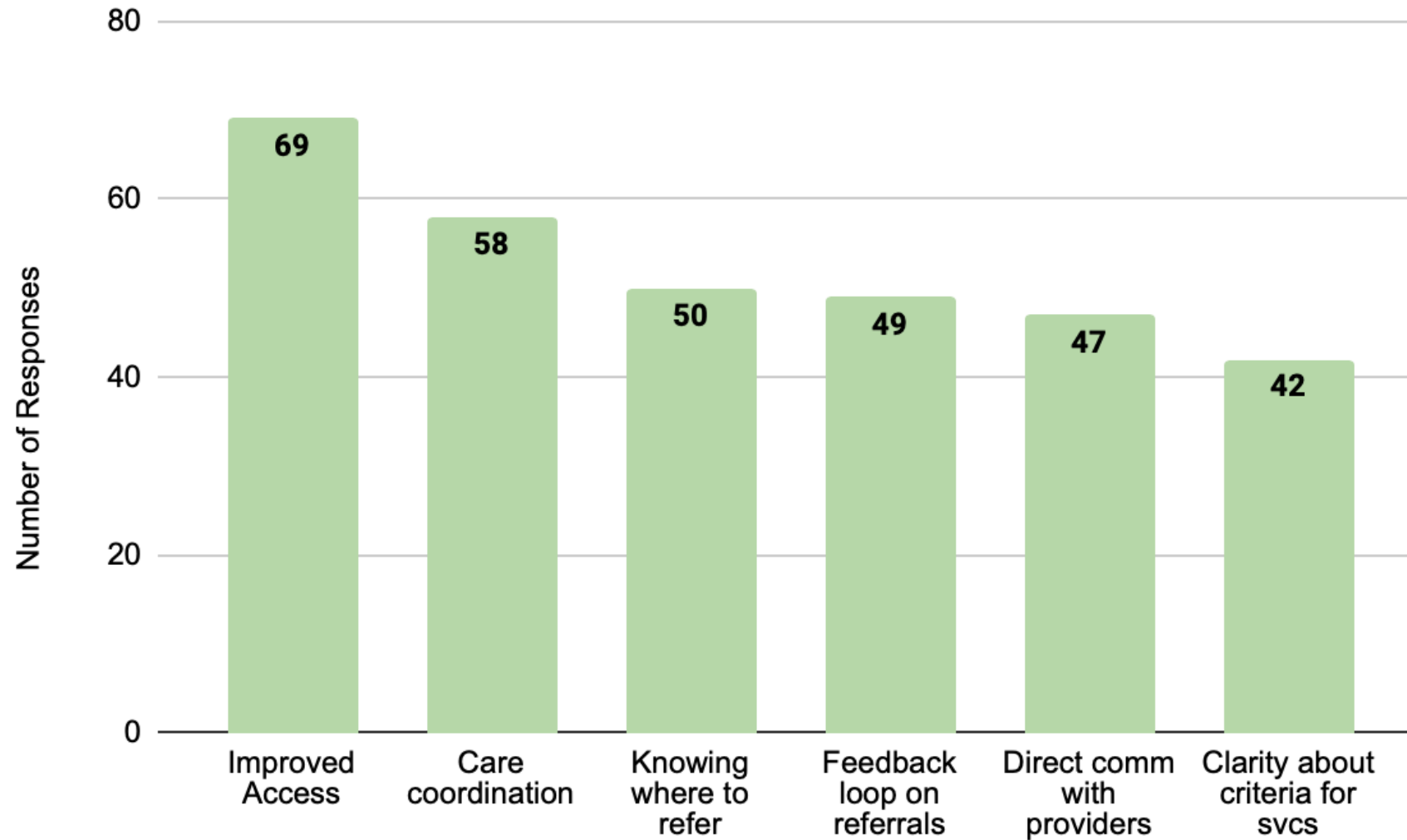
Respondents' concerns about barriers and their ideas for improvement

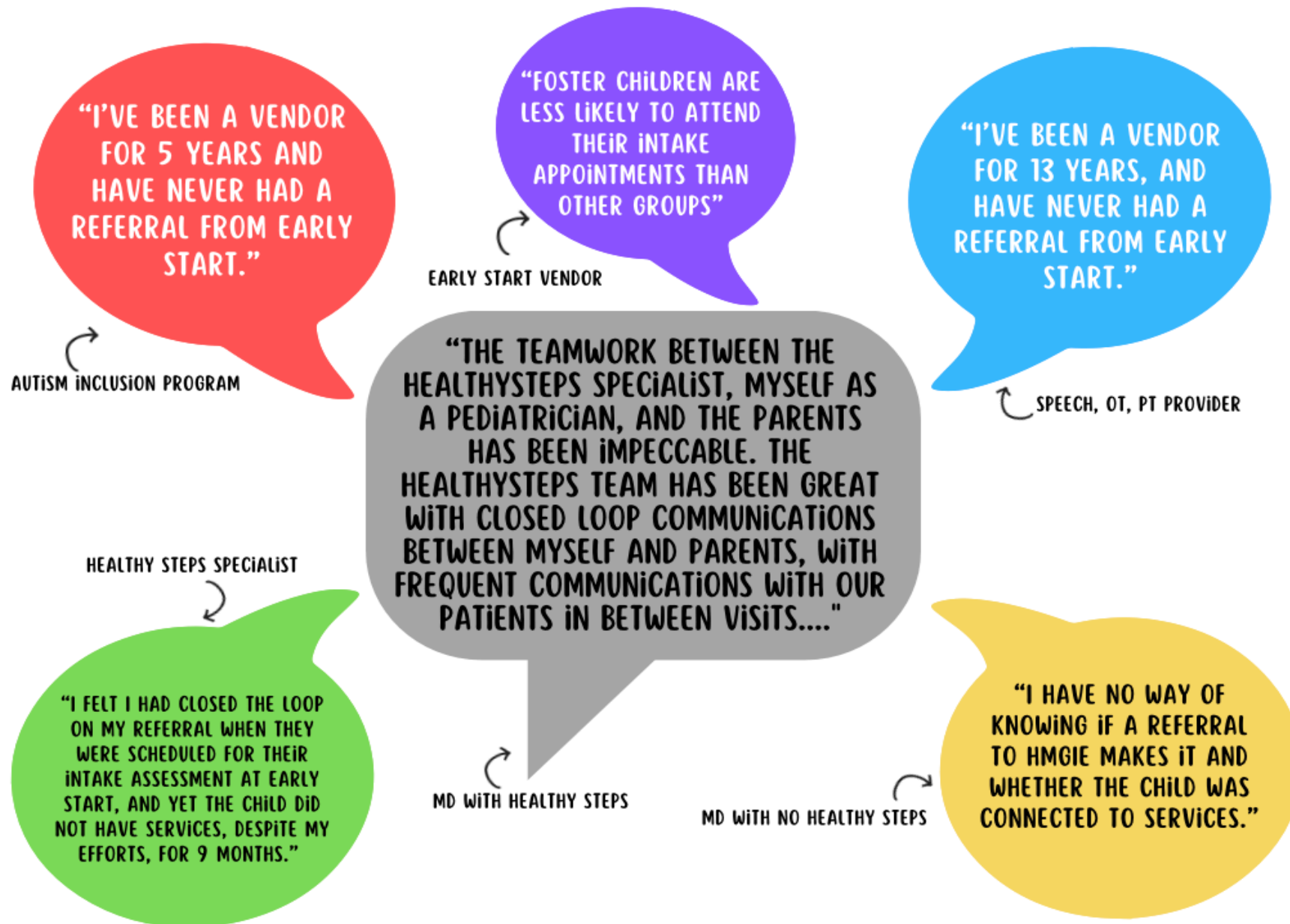


Top 5 Barriers to Securing Services

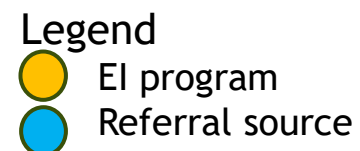
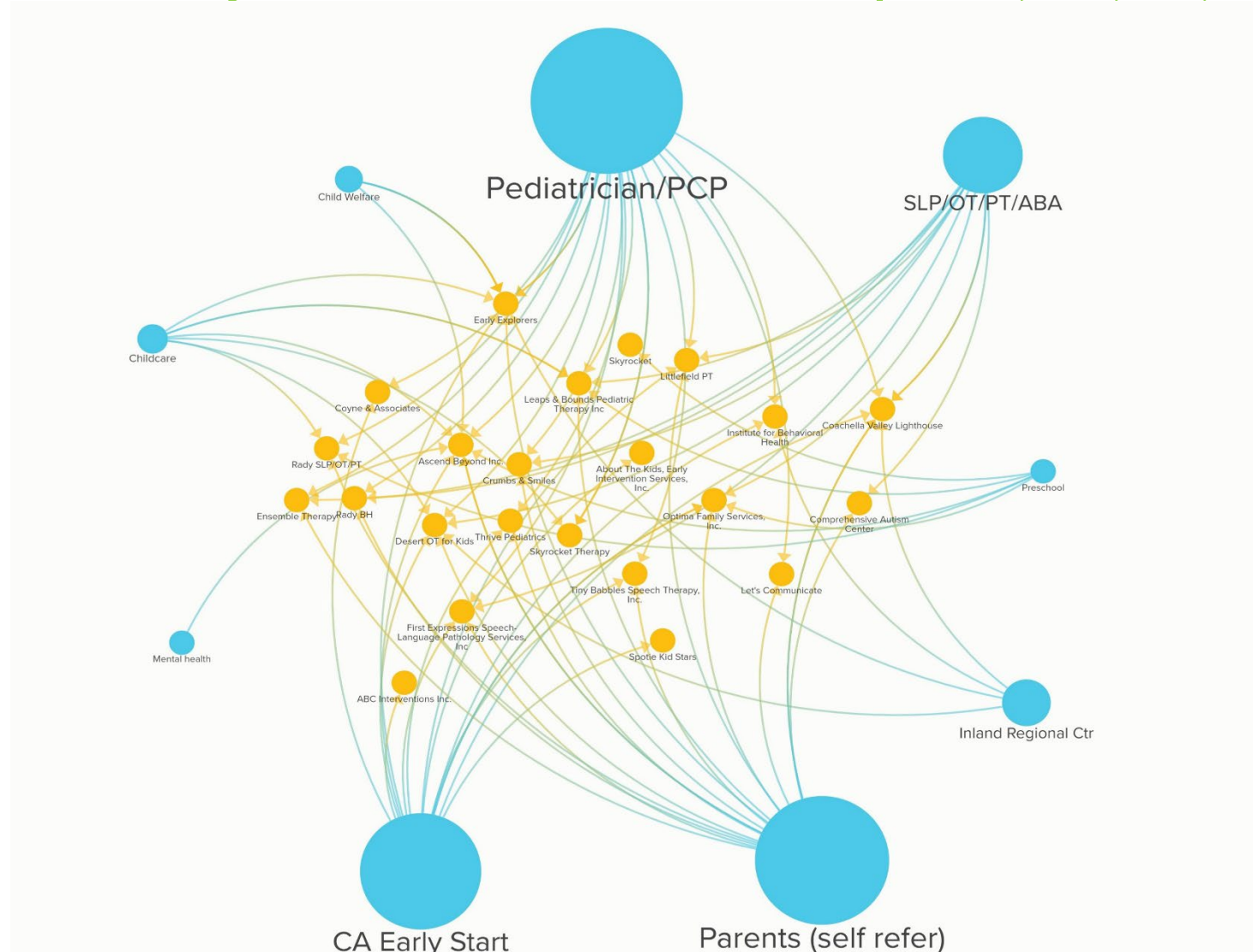


What Will Make Us Better?





Who Refers to our Early Intervention Providers - Speech, OT, PT, ABA?



What do we have already for the children at highest risk?

Home Visiting Programs

- Jurupa Unified School District
- JFK Foundation in Coachella Valley
- Family Services Association
- Nurse Family Partnership Dr. Yoo
- Blindness Support Services

Systematic Dev Screening
Parents as Teachers
Care Coordination
Linkage to Services

Help Me Grow Inland Empire

- Developmental Screenings
- Referrals to Services
- Partner with other agencies

HealthySteps

Screening & Interventions at Well
Child Visits at CPCMG & RUHS sites

Temecula, Murrieta, Hemet,
& Moreno Valley Main Campus*

Primary Care Integration:
Screening, Early Intervention
Linkage to Services
*+4 Clinics coming

Developmental Evaluation Clinic (RUHS Behavioral Health Contract)

- Diagnostic Developmental Evaluations
- Mental Health Therapy
- Care Coordination
- Parent Support Groups

Diagnosis and Intervention:
Children <6 with Medi-Cal
including children who are
CWS involved

Family Resource Centers

- Benefits Enrollment
- Developmental Screenings
- Resource and Referral
- Case Management
- Parenting Classes

Where do we go from here?



PRESENT TO F5
ADVISORY COMMITTEE
FOR DEEPER DIVE



EXPLORE FINDINGS AND
DEVELOP WORK PLAN



CONSIDER
WORKGROUPS AROUND
SPECIFIC FINDINGS



DEVELOP SOLUTIONS
TO IDENTIFIED NEEDS

Discussion and next steps



Our first toddler: Alexa's PLAYC Murrieta

Resources:

Kristin Gist: gistkristin@gmail.com

<https://www.livebinders.com/b/2665813> English Version of Mind the Gap- Autism

<https://www.livebinders.com/play/play?id=2835957> Spanish Version of Mind the Gap- Autism