

**FOR ACTION**

**AGENDA ITEM:**

**January 22, 2013**

**SUBJECT: Playgrounds – Final Schematics & Cost Estimates – Summer 2013**

**MOTION:** That the Board of Education approve the final schematics and cost estimates for the summer 2013 playgrounds for Hatch, Irving, Mann & Whittier schools and authorize the landscape architectural firm, Altamanu, to finalize construction documents and release a bid for same as outlined in the memorandum to the Superintendent dated January 8, 2013.



# Oak Park Elementary School District 97

970 Madison ▪ Oak Park ▪ Illinois ▪ 60302 ▪ ph: 708.524.3000 ▪ fax: 708.524.3019 ▪ www.op97.org

TO: Dr. Albert G. Roberts, Superintendent of Schools

FROM: Therese M. O'Neill, Asst. Supt. Finance & Operations

SUBJECT: Final Cost Estimates – Playgrounds for Summer 2013

DATE: January 8, 2013

Included in the Board packet were original estimates for the four schools having work done this forthcoming summer and then, on Friday, a revised estimates for Irving were received and forwarding separately for the Board. Then yesterday, alternate #2 for Irving was further revised. Included in this packet are the final cost estimates for the four schools.

Attached are the formalized cost estimates, in summary, for each of the four schools:

Hatch –	Base Bid:	\$253,863.06	
	Rubberized Surface:	\$132,678.00	
	Alternate 1H:	\$ 1,429.45	
Mann -	Base Bid:	\$285,789.30	
	Rubberized Surface:	\$129,381.00	
	Alternate 4M:	\$ 16,990.05	
	Alternate 5M:	\$ 13,200.00	
Whittier -	Base Bid:	\$255,954.25	
	Rubberized Surface:	\$164,850.00	
	Alternate 6W:	\$ 24,819.30	
	Alternate 7W:	TBD	
Irving -	Base Bid:	\$840,423.32	\$917,548.50 (Revised)
	Rubberized Surface:	\$143,220.00	\$143,220.00
	<b>Total</b>	<b>\$983,643.32</b>	<b>\$1,060,768.50</b>
	Alternate 1: Base:	\$715,638.07	\$780,216.75 (Revised)
	Rubberized Surface:	\$143,220.00	\$143,220.00
	<b>Total</b>	<b>\$858,858.07</b>	<b>\$923,436.75</b>
	Alternate 2: Base:	\$1,111,139.12	\$1,052,996.37 (Revised)
	Rubberized Surface:	\$ 150,150.00	\$ 150,150.00
	<b>Total</b>	<b>\$1,261,289.12</b>	<b>\$1,203,146.37</b>

All three Irving scenarios have reduced in price from the conceptual schematics presented at the November 27, 2012 meeting:

	<u>November 27, 2013</u>	<u>January 8, 2013</u>
Base Bid	\$1,166,141.64	\$1,060,768.50
Alternate #1	\$ 987,609.00	\$ 923,436.75
Alternate #2	\$1,306,316.72	\$1,203,146.37

The cost estimate between November and now for the Mann site has increased by \$22,777. This is primarily due to the category of work entitled Removals and Site Preparation. At the time the original estimate was created, it was assumed that there would be no need to excavate and/or removal some of the existing utilities; however, upon detailed design creation, it was determined that more extension work would be necessary. Therefore, this category changed from \$13,331 to \$35,905.

The construction documents and these final cost estimates were reviewed with the FAC (Facility Advisory Committee) members prior to last evening's FAC meeting and were discussed in detail at the meeting last evening. Attached is a two-page document that includes all FAC members' observations specific to the construction documents and cost estimates. These are being forwarded to the Altamanu for their review, inclusion, or non-inclusion in the final construction documents; however, FAC will receive a written response from Altamanu to this overall document (item by item).

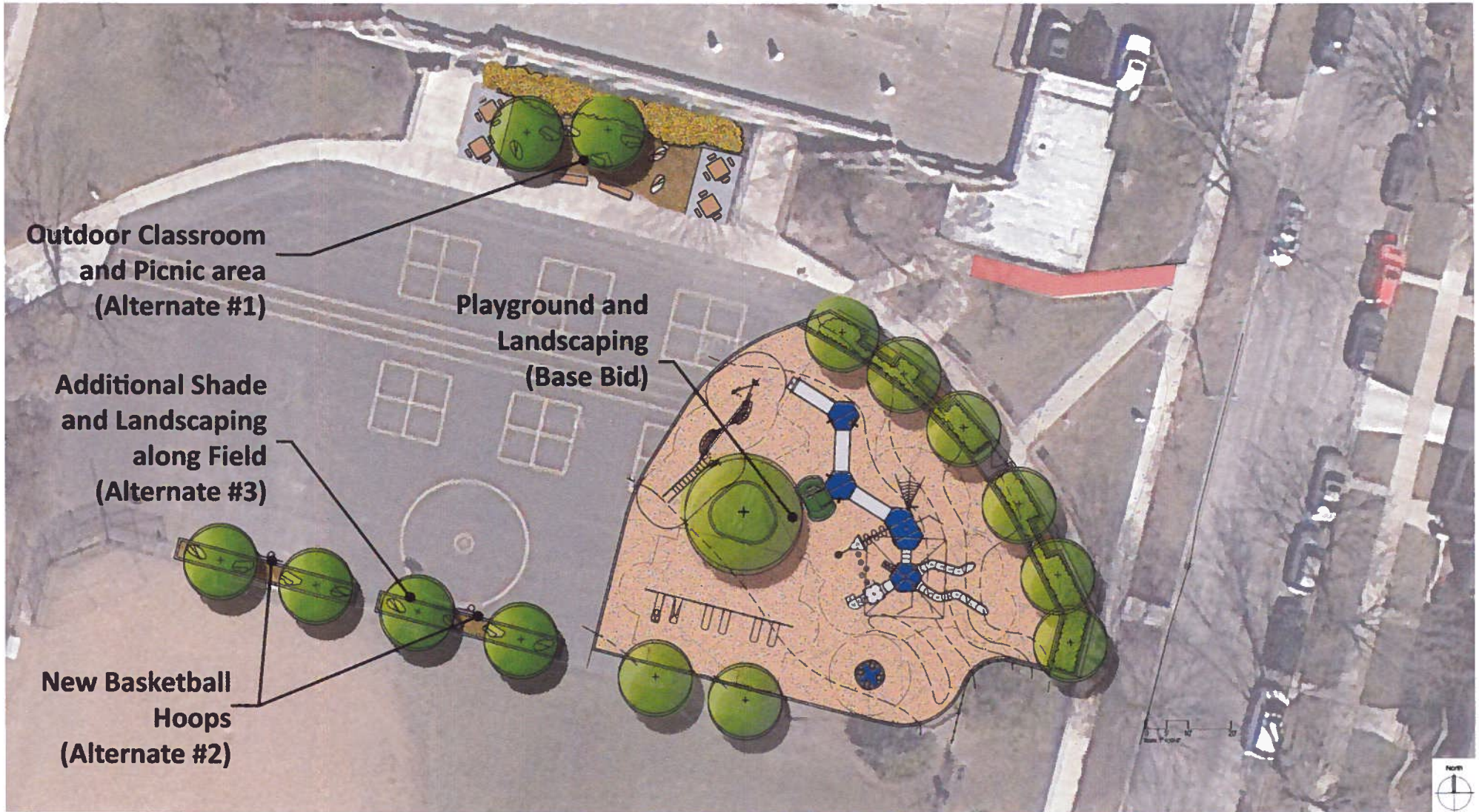
Overall, FAC was supportive of moving these documents along for final preparation and letting for bid.

We will be seeking authority to proceed with letting this work at the January 22, 2013 meeting. With this authority, it is intended to let bids commencing with January 28 and returned by February 13 with first review by the Board at its February 26 meeting and approval at the March 19 meeting. This timetable will allow FAC, at its scheduled February 19 meeting, to first review the bids received prior to promulgating to the Board for its first review. Further, this timetable will afford the successful contractor sufficient time to order materials and equipment as well as provide the firm the ability to mobilize work crews so work can commence immediately upon the close of school, anticipated on Thursday, May 30, with successful completion of all work prior to school commencing in late August, 2013.

tmo

attachments

attachments



**Outdoor Classroom  
and Picnic area  
(Alternate #1)**

**Additional Shade  
and Landscaping  
along Field  
(Alternate #3)**

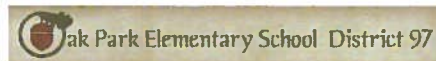
**New Basketball  
Hoops  
(Alternate #2)**

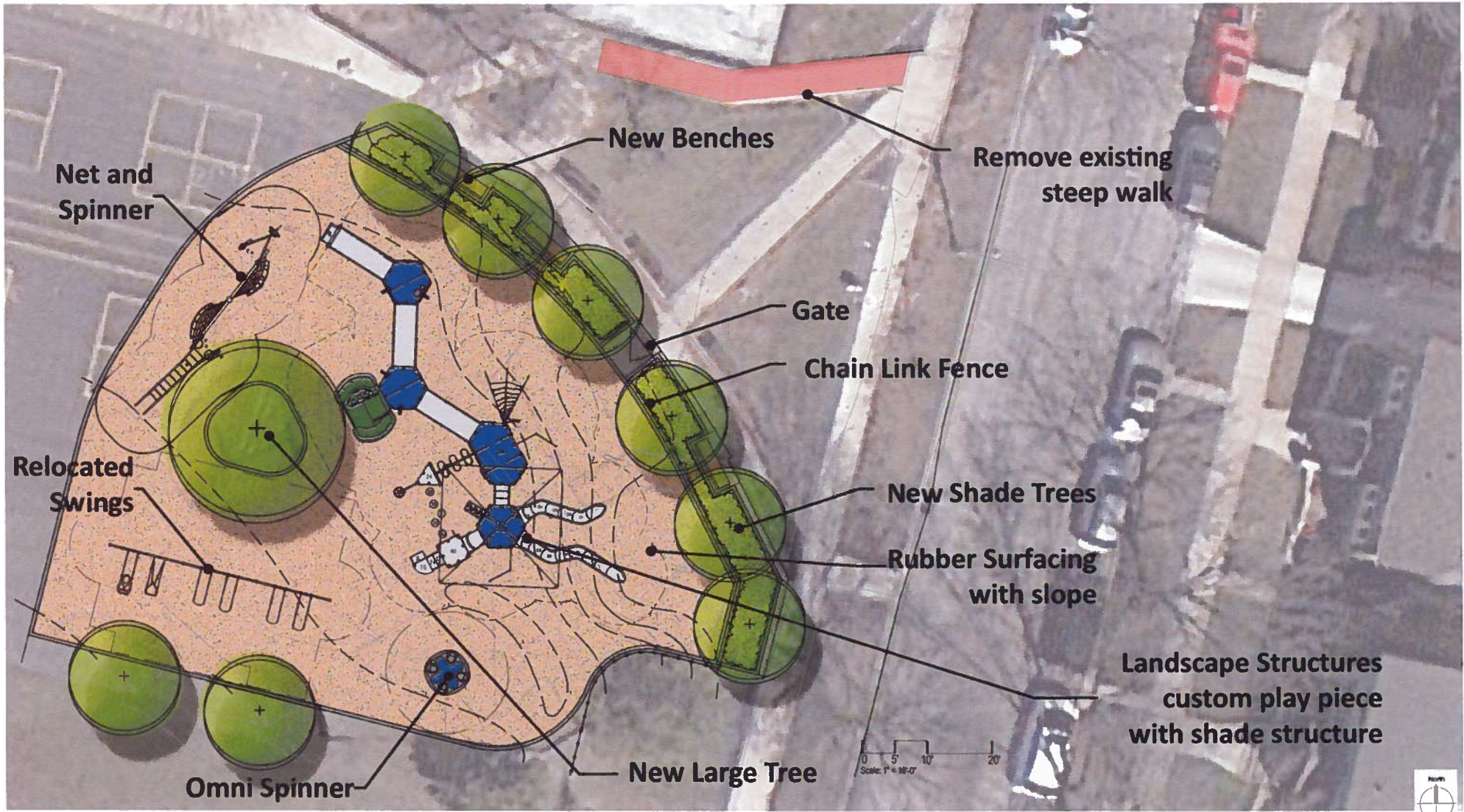
**Playground and  
Landscaping  
(Base Bid)**

11.06.2012

# Hatch Elementary School

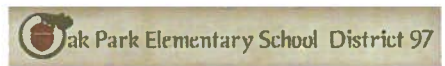
Oak Park District 97





11.06.2012

**Hatch Elementary School**  
 Oak Park District 97



## School District 97 Playground Improvements

2-Jan-13

Item	Unit	Qty	Unit Price	Total
------	------	-----	------------	-------

### HATCH ELEMENTARY SCHOOL

#### Removals and Site Preparation

1	Site Preparation, mobilization, construction fencing, construction entrance, bonding costs	LS	1	\$5,750.00	\$5,750.00
2	Tree Protection Fencing Supply and Install	LF	460	\$5.00	\$2,300.00
3	Furnish, install and maintain erosion control measures	LS	1	\$600.00	\$600.00
4	Sawcut Pavement	LF	125	\$10.00	\$1,250.00
4	Remove and haul off existing concrete pavement	SY	30	\$30.00	\$900.00
5	Remove and haul off existing asphalt pavement	SY	290	\$30.00	\$8,700.00
6	Remove and haul off timbers	LF	435	\$9.50	\$4,132.50
6	Remove existing benches/pads/footings	EACH	2	\$250.00	\$500.00
7	Remove and haul off mulch in existing playground	SY	570	\$7.50	\$4,275.00
8	Remove and haul off playground equipment, foundations, playground surface, etc.	LS	1	\$5,000.00	\$5,000.00
9	Remove existing swings, store for relocation	LS	1	\$1,500.00	\$1,500.00
10	Root Prune trees performed by a Certified Arborist/Tree Surgeon as identified on the drawings prior to construction activities	LF	50	\$10.00	\$500.00
	<b>Subtotal Removals and Site Preparation</b>				<b>\$35,407.50</b>

#### Site Grading and Excavation

11	Perform all grading and excavation to obtain sub grades for pavement and other grading requirements as shown or noted on the Plans and in accordance with the specifications	LS	1	\$5,400.00	\$5,400.00
12	Transitional grading from edge of walk or curb to existing surface after walk installation	LS	1	\$1,200.00	\$1,200.00
	<b>Subtotal Site Grading and Excavation</b>				<b>\$6,600.00</b>

#### Paving and Surface

13	Furnish and install concrete walk, including site furnishing pads as shown on the drawings. (see eng detail)	SF	265	\$6.50	\$1,722.50
14	Furnish and Install asphalt patch as shown on the drawings. (see eng detail)	SY	25	\$50.00	\$1,250.00
15	Furnish and install 6" curbs as shown on the drawings. (see eng detail)	LF	510	\$18.00	\$9,180.00
16	Repaint lines for blacktop games and line up circles	LS	1	\$1,000.00	\$1,000.00
	<b>Subtotal Paving and Surface</b>				<b>\$13,152.50</b>

#### Playground Equipment

17	Apparatus: Furnish and install Landscape Structures <u>NET CLIMBER (2650)</u> as shown and noted on the plan and in play equipment schedule.	EA	1	\$19,103.00	\$19,103.00
18	Apparatus: Furnish and install Landscape Structures <u>OMNI SPINNER</u> as shown and noted on the plan and in play equipment schedule.	EA	1	\$8,330.00	\$8,330.00
19	Apparatus: Furnish and install Landscape Structures <u>CUSTOM PLAY EQUIPMENT</u> as shown and noted on the plan and in play equipment schedule.	EA	1	\$119,238.00	\$119,238.00
20	Apparatus: Reinstall <u>EXISTING LANDSAPE STRUCTURES SWINGS</u> noted on the plan and in play equipment schedule. Refurbish and repaint as needed	EA	1	\$3,000.00	\$3,000.00
	<b>Subtotal Apparatus Area</b>				<b>\$149,671.00</b>

Item	Unit	Qty	Unit Price	Total
------	------	-----	------------	-------

**HATCH ELEMENTARY SCHOOL**

**Site Furniture and Fencing**

21	Furnish and install 8' IPE backed benches	EA	3	\$1,900.00	\$5,700.00
22	Wave Bike Rack on existing pavement	EA	1	\$900.00	\$900.00
23	Furnish and install 4' ht chain link fence as shown on plans.	LF	160	\$50.00	\$8,000.00
24	Furnish and install 4' ht chain link fence 4' wide gate as shown on plans.	EA	1	\$400.00	\$400.00
<b><u>Subtotal Site Furniture</u></b>					<b>\$15,000.00</b>

**Site Landscape Plantings**

25	Furnish and install 3" Catalpa Shade Tree	EA	1	\$663.08	\$663.08
26	Furnish and install 3" London Planetree Shade Tree	EA	3	\$621.08	\$1,863.24
27	Furnish and install 3" Swamp White Oak Shade Tree	EA	3	\$609.00	\$1,827.00
28	Furnish and install 8" Elm Shade Tree	EA	1	\$3,300.00	\$3,300.00
29	Furnish and install #5 Container Green Mound Alpine Currant	EA	56	\$40.63	\$2,275.28
30	Furnish and install hardwood mulch in planted areas	SY	75	\$7.00	\$525.00
31	Prune existing trees as needed	LS	1	\$500.00	\$500.00
<b><u>Subtotal Site Landscape Plantings</u></b>					<b>\$10,953.60</b>

<b>Total for base bid improvements - Hatch Elementary</b>					<b>\$230,784.60</b>
<b>10% Contingency</b>					<b>\$23,078.46</b>
<b>GRAND TOTAL FOR BASE BID - HATCH ELEMENTARY SCHOOL</b>					<b>\$253,863.06</b>

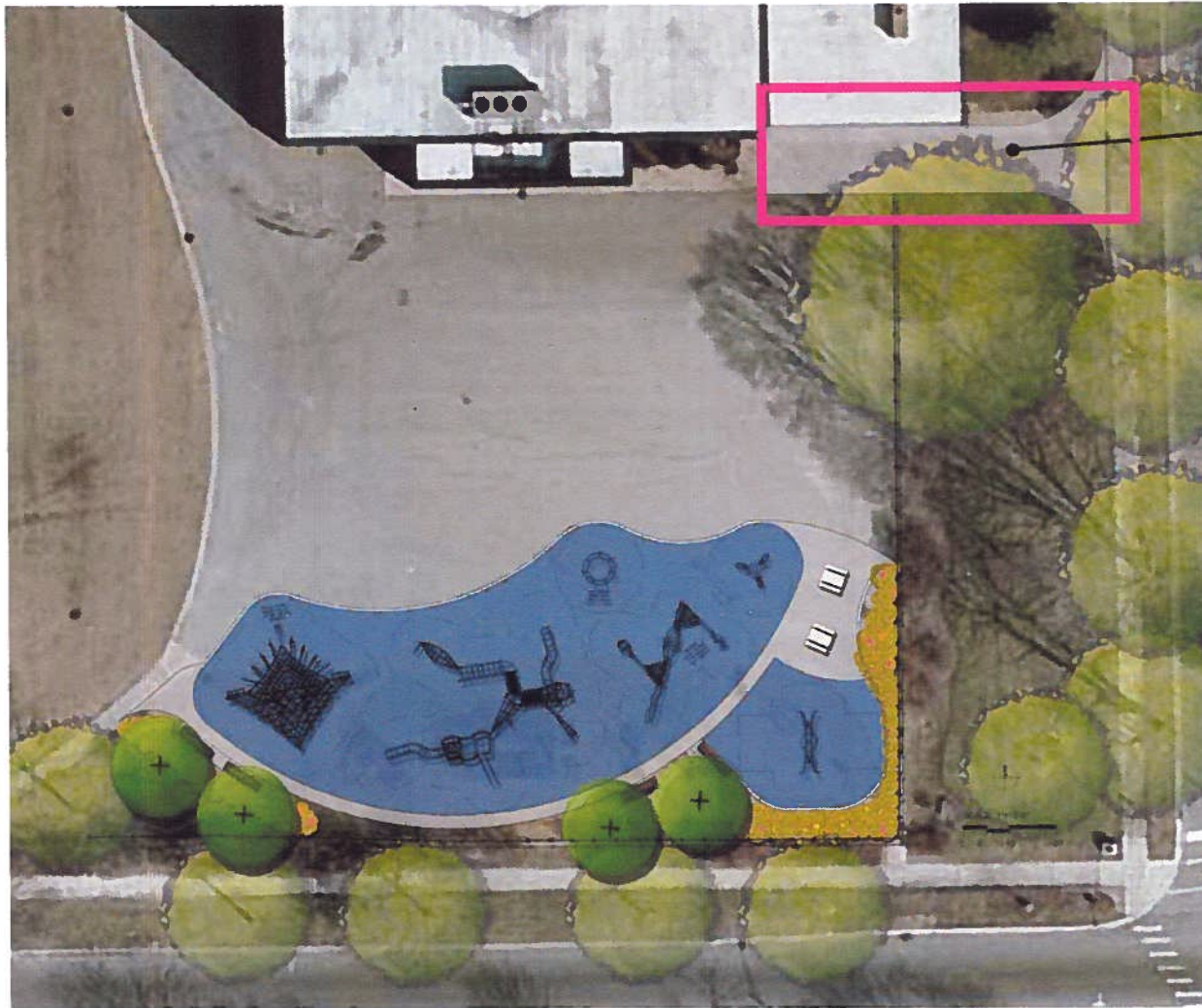
**ALTERNATE #1H - Village of Oak Park Sidewalk removal/replacement**

32	Remove and haul off existing sidewalk	SF	113	\$5.00	\$565.00
33	Furnish and install 5" thick walk to Village Standards (see eng detail)	SF	113	\$6.50	\$734.50
<b>TOTAL FOR ALTERNATE #1H - VOP Sidewalk</b>					<b>\$1,299.50</b>
<b>10% Contingency</b>					<b>\$129.95</b>
<b>GRAND TOTAL FOR ALTERNATE #1H</b>					<b>\$1,429.45</b>

**PLAYGROUND RUBBER SURFACING**

34	Furnish and install concrete base to receive synthetic rubber surfacing at all playground surfaces	SF	6,318	\$7.00	\$44,226.00
35	Furnish and install synthetic rubber surfacing at all playground surfaces	SF	6,318	\$14.00	\$88,452.00
<b>TOTAL FOR PLAYGROUND SURFACING</b>					<b>\$132,678.00</b>

# PLAYGROUND CONCEPT PLAN




ALTERNATE



11.06.2012

**Mann Elementary School**

Oak Park District 97

 Oak Park Elementary School District 97

 **Manhard**  
CONSULTING

**Altamanu**  Inc.



## School District 97 Playground Improvements

2-Jan-13

Item	Unit	Qty	Unit Price	Total
------	------	-----	------------	-------

### MANN ELEMENTARY SCHOOL

#### Removals and Site Preparation

1	Site Preparation, mobilization, construction fencing, construction entrance, bonding costs	LS	1	\$3,750.00	\$3,750.00
2	Tree Protection Fencing Supply and Install	LF	245	\$5.00	\$1,225.00
3	Furnish, install and maintain erosion control measures	LS	1	\$2,075.00	\$2,075.00
4	Sawcut Pavement	LF	175	\$10.00	\$1,750.00
5	Remove and haul off existing concrete pavement	SY	32	\$30.00	\$960.00
6	Remove and haul off existing asphalt pavement	SY	370	\$30.00	\$11,100.00
7	Remove and haul off existing 8-6.12 curb & gutter	LF	135	\$15.00	\$2,025.00
8	Remove and haul off existing catch basin	EACH	1	\$400.00	\$400.00
9	Remove and haul off existing 8" pvc storm	LF	30	\$20.00	\$600.00
10	Remove existing benches/pads/footings	EACH	4	\$250.00	\$1,000.00
11	Remove and haul off mulch in existing playground	SY	640	\$7.50	\$4,800.00
12	Remove and haul off playground equipment, foundations, playground surface, etc.	LS	1	\$5,000.00	\$5,000.00
13	Root prune existing trees as shown on plans	LF	60	\$12.00	\$720.00
14	Selective trimming/pruning of existing hedge	LS'	1	\$500.00	\$500.00
<b>Subtotal Removals and Site Preparation</b>					<b>\$35,905.00</b>

#### Site Grading and Excavation

15	Perform all grading and excavation to obtain sub grades for pavement and other grading requirements as shown or noted on the Plans and in accordance with the specifications	LS	1	\$3,200.00	\$3,200.00
16	Transitional grading from edge of walk or curb to existing surface after walk installation	LS	1	\$1,200.00	\$1,200.00
<b>Subtotal Site Grading and Excavation</b>					<b>\$4,400.00</b>

#### Paving and Surface

17	Furnish and install concrete walk, including site furnishing pads as shown on the drawings. (see eng detail)	SF	1207	\$6.50	\$7,845.50
18	Furnish and install asphalt patch as shown on the drawings. (see eng detail)	SY	44	\$50.00	\$2,200.00
19	Furnish and install 6" curbs as shown on the drawings. (see eng detail)	LF	195	\$18.00	\$3,510.00
20	Repaint lines for blacktop games and line up circles	LS	1	\$1,000.00	\$1,000.00
<b>Subtotal Paving and Surface</b>					<b>\$14,555.50</b>

#### Utilities and Drainage

21	Furnish and install 48" catch basin	EA	1	\$2,400.00	\$2,400.00
22	Furnish and install 8" PVC Type SDR 26	LF	60	\$15.00	\$900.00
<b>Subtotal Utilities and Drainage</b>					<b>\$3,300.00</b>

#### Playground Equipment

	Item	Unit	Qty	Unit Price	Total
--	------	------	-----	------------	-------

**MANN ELEMENTARY SCHOOL**

23	Apparatus: Furnish and install Kompan <u>BLAZER ELE400021</u> as shown and noted on the plan and in play equipment schedule.	EA	1	\$3,143.00	\$3,143.00
24	Apparatus: Furnish and install Kompan <u>Supernova GXY944</u> as shown and noted on the plan and in play equipment schedule.	EA	1	\$8,793.54	\$8,793.54
25	Apparatus: Furnish and install Kompan <u>GXY942</u> as shown and noted on the plan and in play equipment schedule.	EA	1	\$44,037.00	\$44,037.00
26	Apparatus: Furnish and install Kompan <u>ELE5900296</u> as shown and noted on the plan and in play equipment schedule.	EA	1	\$71,340.50	\$71,340.50
27	Apparatus: Furnish and install Kompan <u>CLASSIC DOME COR8842</u> as shown and noted on the plan and in play equipment schedule.	EA	1	\$46,480.00	\$46,480.00
28	Apparatus: Furnish and install Landscape Structures <u>LS Oodle Swing</u> as shown and noted on the plan and in play equipment schedule.	EA	1	\$5,908.00	\$5,908.00
	<b><u>Subtotal Playground Equipment</u></b>				<b>\$179,702.04</b>

**Site Furniture and Fencing**

29	Furnish and install 8' IPE backed benches	EA	4	\$1,900.00	\$7,600.00
30	Precast concrete picnic tables	EA	2	\$1,560.00	\$3,120.00
31	Furnish and install 4' ht chain link fence as shown on plans.	LF	10	\$50.00	\$500.00
32	Furnish and install 6' ht chain link fence as shown on plans.	EA	5	\$60.00	\$300.00
	<b><u>Subtotal Site Furniture</u></b>				<b>\$11,520.00</b>

**Site Landscape Plantings**

33	Furnish and install 3" Quaking Aspen Tree	EA	4	\$579.08	\$2,316.32
34	Furnish and install 5' HT Blue Heaven Juniper	EA	1	\$232.58	\$232.58
35	Furnish and install 36" ht. Aronia melanocarpa "Iroquis Beauty"	EA	20	\$68.78	\$1,375.60
36	Furnish and install #3 Cont. Itea virginica "Little Henry"	EA	28	\$47.78	\$1,337.84
37	Furnish and install 36" ht. Physocarpus opulifolius "Summer Wine"	EA	3	\$57.23	\$171.69
38	Furnish and install 36" ht. Viburnum "Blue Muffin"	EA	20	\$57.23	\$1,144.60
39	Furnish and install #1 Cont. Allium "Summer Beauty"	EA	14	\$11.88	\$166.32
40	Furnish and install #1 Cont. Bouteloua curtipendula	EA	14	\$13.75	\$192.50
41	Furnish and install #1 Cont. Panicum virgatum 'Northwind'	EA	8	\$14.38	\$115.04
42	Furnish and install #1 Cont. Schizachyrium scoparium	EA	9	\$14.38	\$129.42
43	Furnish and install hardwood mulch in planted areas	SY	92	\$7.00	\$644.00
44	Furnish and install topsoil as shown on details	CY	52	\$50.00	\$2,600.00
	<b><u>Subtotal Site Landscape Plantings</u></b>				<b>\$10,425.91</b>

	<b>Total for base bid Improvements - Mann Elementary</b>				<b>\$259,808.45</b>
	<b>10% Contingency</b>				<b>\$25,980.85</b>
	<b>GRAND TOTAL FOR BASE BID - MANN ELEMENTARY SCHOOL</b>				<b><u>\$285,789.30</u></b>

Item	Unit	Qty	Unit Price	Total
------	------	-----	------------	-------

**MANN ELEMENTARY SCHOOL**

**ALTERNATE #4M - New Entry**

45	Remove existing tree	EA	1	\$400.00	\$400.00
46	Furnish and install silt fence	LF	85	\$3.50	\$297.50
47	Furnish and install 8' ht construction fence	LF	171	\$10.00	\$1,710.00
48	Sawcut pavement	LF	51	\$10.00	\$510.00
49	Remove and haul off existing concrete pavement	SY	58	\$30.00	\$1,740.00
50	Remove and haul off existing asphalt pavement	SY	36	\$30.00	\$1,080.00
51	Remove existing chain link fence, posts and foundations	LF	12	\$10.00	\$120.00
52	Furnish and install concrete walk as shown on drawings	SF	1352	\$6.50	\$8,788.00
53	Furnish and install asphalt patch as shown on drawings	SY	8	\$50.00	\$400.00
54	Furnish and install chain link fence	LF	10	\$40.00	\$400.00
	<b>TOTAL FOR ALTERNATE #4M - New Entry at Mann</b>				<b>\$15,445.50</b>
	<b>10% Contingency</b>				<b>\$1,544.55</b>
	<b>GRAND TOTAL FOR ALTERNATE #4M</b>				<b>\$16,990.05</b>

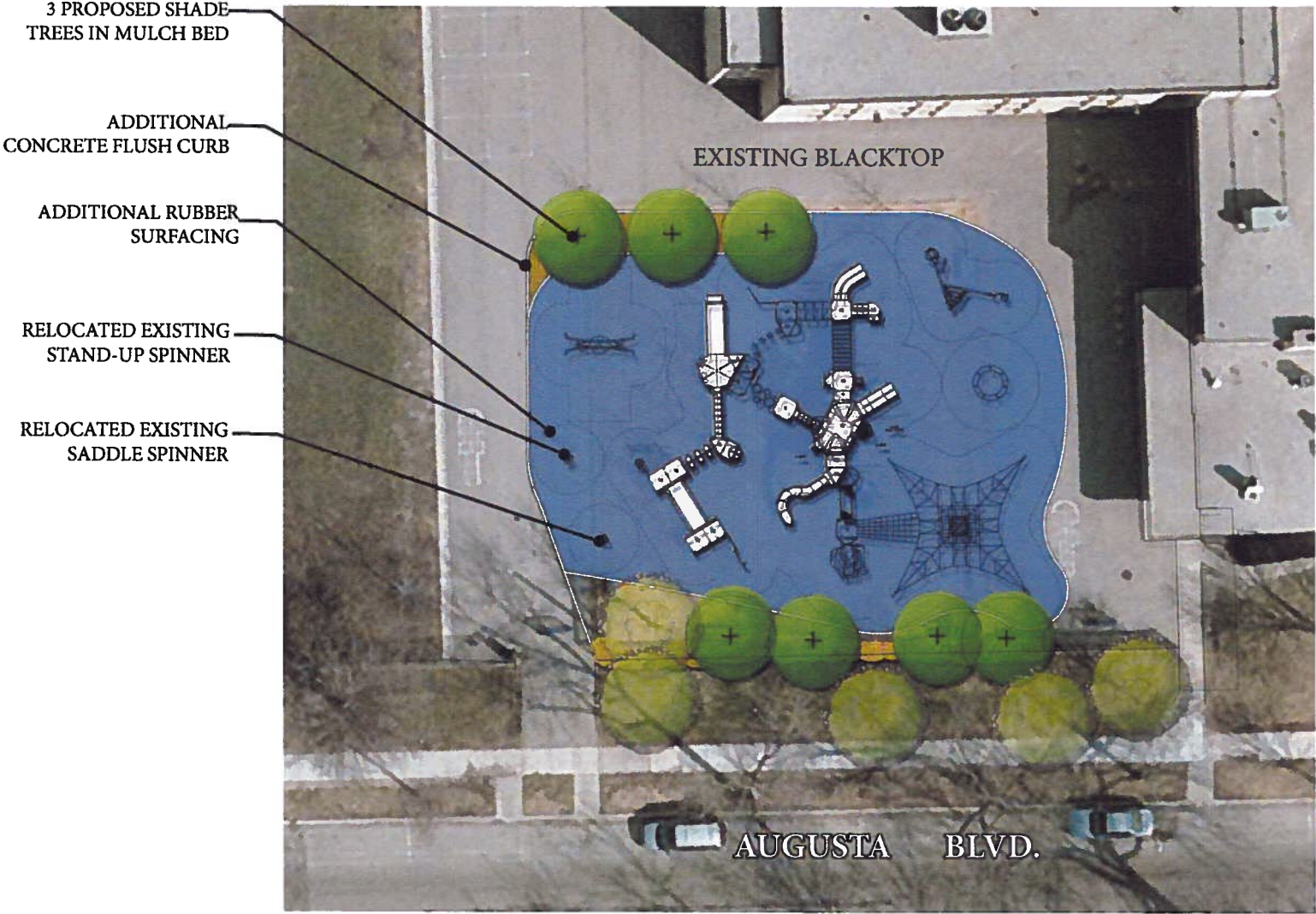
**ALTERNATE #5M - Trash Enclosure**

55	Furnish and install 8' ht construction fence	LF	195	\$10.00	\$1,950.00
56	Remove and haul off existing trash enclosure fence, posts and foundations	LF	56	\$30.00	\$1,680.00
57	Furnish and install pavement patches where existing foundations were located	LS	1	\$500.00	\$500.00
58	Sawcut existing asphalt for new concrete pad	LF	60	\$10.00	\$600.00
59	Remove and haul off existing asphalt pavement and base	SY	39	\$40.00	\$1,560.00
60	Furnish and install concrete pad for trash enclosure	SY	28	\$70.00	\$1,960.00
61	Furnish and install 6' H chain link fence	LF	55	\$50.00	\$2,750.00
62	Furnish and install 5' W x 6'H chain link gate	EA	1	\$350.00	\$350.00
63	Furnish and install asphalt patch as shown on drawings	SY	13	\$50.00	\$650.00
	<b>TOTAL FOR ALTERNATE #5M - New Entry at Mann</b>				<b>\$12,000.00</b>
	<b>10% Contingency</b>				<b>\$1,200.00</b>
	<b>GRAND TOTAL FOR ALTERNATE #5M</b>				<b>\$13,200.00</b>

**PLAYGROUND RUBBER SURFACING**

64	Furnish and install concrete base to receive synthetic rubber surfacing at all playground surfaces	SF	6,161	\$7.00	\$43,127.00
65	Furnish and install synthetic rubber surfacing at all playground surfaces	SF	6,161	\$14.00	\$86,254.00
	<b>TOTAL FOR PLAYGROUND SURFACING</b>				<b>\$129,381.00</b>

5 - 10 PLAYGROUND CONCEPT PLAN



11. 13. 2012

**Whittier Elementary School**  
Oak Park District 97



## School District 97 Playground Improvements

2-Jan-13

Item	Unit	Qty	Unit Price	Total
------	------	-----	------------	-------

### WHITTIER ELEMENTARY SCHOOL

#### Removals and Site Preparation

1	Site Preparation, mobilization, construction fencing, construction entrance, bonding costs	LS	1	\$4,630.00	\$4,630.00
2	Tree Protection Fencing Supply and Install	LF	375	\$5.00	\$1,875.00
3	Remove Small Trees 8" caliper or smaller and grind stump to depth of 12"	EA	5	\$500.00	\$2,500.00
4	Furnish and install silt fence	LF	305	\$3.50	\$1,067.50
5	Furnish, install and maintain other erosion control measures	LS	1	\$600.00	\$600.00
6	Sawcut Pavement (including North concrete for garden space)	LF	326	\$10.00	\$3,260.00
7	Remove and haul off existing concrete pavement	SY	108	\$30.00	\$3,240.00
8	Remove and haul off existing asphalt pavement	SY	315	\$30.00	\$9,450.00
9	Remove and haul off timbers and plastic edging around play surfaces	LF	351	\$8.00	\$2,808.00
10	Remove existing bench (store, to be relocated)	EACH	1	\$250.00	\$250.00
11	Remove and dispose of existing benches and footings	EACH	6	\$250.00	\$1,500.00
12	Remove and haul off mulch in 5-12 year old playground	SY	748	\$7.50	\$5,610.00
13	Remove and stockpile mulch in 2-5 year old playground	SY	105	\$6.00	\$630.00
14	Remove and haul off playground equipment, foundations, playground surface, etc.	LS	1	\$5,000.00	\$5,000.00
15	Remove existing fence and footings	LF	18	\$25.00	\$450.00
16	Remove and haul off existing concrete ramp (2-5 playground)	SY	5	\$30.00	\$150.00
17	Root Prune trees performed by a Certified Arborist/Tree Surgeon as identified on the drawings prior to construction activities	LF	20	\$10.00	\$200.00
	<b>Subtotal Removals and Site Preparation</b>				<b>\$43,220.50</b>

#### Site Grading and Excavation

18	Perform all grading and excavation to obtain sub grades for pavement and other grading requirements as shown or noted on the Plans and in accordance with the specifications	LS	1	\$6,400.00	\$6,400.00
19	Transitional grading from edge of walk or curb to existing surface after walk installation	LS	1	\$1,200.00	\$1,200.00
	<b>Subtotal Site Grading and Excavation</b>				<b>\$7,600.00</b>

#### Paving and Surface

20	Furnish and install concrete walk, including site furnishing pads as shown on the drawings. (see eng detail)	SF	657	\$6.50	\$4,270.50
21	Furnish and install asphalt patch as shown on the drawings. (see eng detail)	SY	65	\$30.00	\$1,950.00
22	Furnish and install 3" mulch in planting bed areas. (see specifications)	SY	170	\$7.00	\$1,190.00
23	Furnish and install 6" flush curb as shown on the drawings. (see eng detail)	LF	561	\$24.00	\$13,464.00
24	Repaint lines for blacktop games and line up circles	LS	1	\$1,000.00	\$1,000.00
	<b>Subtotal Paving and Surface</b>				<b>\$21,874.50</b>

#### Playground Equipment

25	Apparatus: Furnish and install Kompan <u>SUPERNOVA GXY944</u> as shown and noted on the plan and in play equipment schedule.	EA	1	\$8,739.54	\$8,739.54
----	--	----	---	------------	------------

	Item	Unit	Qty	Unit Price	Total
--	------	------	-----	------------	-------

**WHITTIER ELEMENTARY SCHOOL**

26	Apparatus: Furnish and install Kompan <u>Nereide GXY937</u> as shown and noted on the plan and in play equipment schedule.	EA	1	\$25,452.00	\$25,452.00
27	Apparatus: Furnish and install Landscape Structures <u>CUSTOM PLAY EQUIPMENT</u> as shown and noted on the plan and in play equipment schedule.	EA	1	\$106,106.14	\$106,106.14
28	Apparatus: Furnish and install Landscape Structures <u>OODLE SWING</u> noted on the plan and in play equipment schedule.	EA	1	\$5,908.00	\$5,908.00
29	Apparatus: Reinstall <u>EXISTING SADDLE SPINNER</u> noted on the plan and in play equipment schedule.	EA	1	\$400.00	\$400.00
30	Apparatus: Reinstall <u>EXISTING STAND UP SPINNER</u> noted on the plan and in play equipment schedule.	EA	1	\$500.00	\$500.00
31	Clean and repaint existing play equipment as needed	LS	1	\$2,500.00	\$2,500.00
	<b>Subtotal Apparatus Area</b>				<b>\$149,605.68</b>

**Site Furniture and Fencing**

32	Reinstall existing bench in 2-5 year old playground area	LS	1	\$500.00	\$500.00
33	Furnish and install 4' ht chain link fence as shown on plans.	LF	45	\$50.00	\$2,250.00
34	Furnish and install 4' ht chain link fence 8' wide double leaf gate as shown on plans.	EA	1	\$800.00	\$800.00
35	Furnish and install 4' ht chain link fence 4' wide gate as shown on plans.	EA	1	\$400.00	\$400.00
36	Repair and paint existing chain link fence	LS	1	\$2,000.00	\$2,000.00
	<b>Subtotal Site Furniture</b>				<b>\$5,950.00</b>

**Site Landscape Plantings**

37	Furnish and install prepared topsoil for planting bed areas	CY	67	\$50.00	\$3,350.00
38	Furnish and install sod as shown on drawings	SY	78	\$7.50	\$585.00
39	Prune existing trees	LS	1	\$500.00	\$500.00
	<b>Subtotal Site Landscape Plantings</b>				<b>\$4,435.00</b>

	<b>Total for base bid Improvements - Whittier Elementary</b>				<b>\$232,685.68</b>
	<b>10% Contingency</b>				<b>\$23,268.57</b>
	<b>GRAND TOTAL FOR BASE BID - WHITTIER ELEMENTARY SCHOOL</b>				<b><u>\$255,954.25</u></b>

**ALTERNATE #6W - GROUP SWING AT 2-5 PLAYGROUND**

40	Perform grading and excavation to obtain sub grades for pavement	LS	1	\$800.00	\$800.00
41	Perform transitional grading from edge of walk or curb to existing surface after walk installation	LS	1	\$400.00	\$400.00
42	Furnish and install 5" thick walk, including site furnishing pads as shown on drawings	SF	40	\$6.50	\$260.00
43	Concrete base to receive synthetic rubber surfacing	SF	620	\$7.00	\$4,340.00
44	Synthetic rubber surfacing	SF	620	\$14.00	\$8,680.00
45	Furnish and install 6" flush curb	LF	92	\$24.00	\$2,208.00
46	Deduct 6" flush curb to be installed as part of base bid	LF	17	\$24.00	-\$408.00

	Item	Unit	Qty	Unit Price	Total
--	------	------	-----	------------	-------

**WHITTIER ELEMENTARY SCHOOL**

47	Furnish and install Landscape Structures OODLE SWING 2-5 Year Old	EA	1	\$5,908.00	\$5,908.00
48	Furnish and install new sod	SY	50	\$7.50	\$375.00
	<b>TOTAL FOR ALTERNATE #6W - GROUP SWING AT 2-5 PLAY</b>				<b>\$22,563.00</b>
	<b>10% Contingency</b>				<b>\$2,256.30</b>
	<b>GRAND TOTAL FOR ALTERNATE #6W</b>				<b>\$24,819.30</b>

**ALTERNATE #7W - WATER SUPPLY FOR GARDEN SPACE**

49	Furnish and install Yard Hydrant Woodford Model Y95 or approved equivalent	EA	1	\$600.00	\$600.00
50	Reduced Pressure Zone, enclosure and all required material	EA	1	\$450.00	\$450.00
51	Water service pipe, trench, backfill, patching and all other required items. Contractor to provide unit price. Routing of water service to be determined based on where District 97 can provide a building stub.	LS	TBD	TBD	TBD
	<b>GRAND TOTAL FOR ALTERNATE #7W - WATER SUPPLY</b>				<b>TBD</b>

**PLAYGROUND RUBBER SURFACING**

52	Furnish and install concrete base to receive synthetic rubber surfacing at all playground surfaces	SF	7,850	\$7.00	\$54,950.00
53	Furnish and install synthetic rubber surfacing at all playground surfaces	SF	7,850	\$14.00	\$109,900.00
	<b>TOTAL FOR PLAYGROUND SURFACING</b>				<b>\$164,850.00</b>

# Irving Elementary Base Bid



CUYLER AVE





# Irving Elementary Base Bid Opinion of Probable Costs:

## Refurbished Parking Lot:

Alternate II Mill and Relay Existing Parking Lot, New Fence & Concrete Trash Enclosure	<b>\$81,240</b>
---	-----------------

## 180 FT x 114 FT Field:

REMOVALS & EXCAVATION	\$280,370.00
ARTIFICIAL SURFACING	\$209,847.40
DRAINAGE & UTILITIES	\$105,755.00
NEW TREES & TOPSOIL	\$18,200.00
NEW FENCE	\$23,400.00
SUBTOTAL	\$637,572.40
10% CONTINGENCY	\$63,757.24
TOTAL FOR FIELD	\$701,329.64

## New Playground (Concept B):

REMOVALS	\$19,800
SITE GRADING, EXCAVATION, DRAINAGE & UTILITIES:	\$10,500
ASPHALT AND CONC. WALK	\$27,450
PLAY EQUIPMENT & RUBBER SURFACE	\$272,080
SITE FURNITURE & LANDSCAPES	\$18,872
SUBTOTAL	\$348,702
10% CONTINGENCY	\$34,870
TOTAL FOR IRVING SCHOOL PLAYGROUND IMPROVEMENTS	\$383,572

Irving Elementary Base Bid Opinion of Probable Cost: **\$1,166,141.64**

Add add'l \$160,000 for sport lighting

Item	Unit	Qty	Unit Price	Total
------	------	-----	------------	-------

**IRVING ELEMENTARY SCHOOL - Base BID**

**Removals and Site Preparation**

1	Construction Entrance	EA	1	\$1,500.00	\$1,500.00
2	Tree Protection Fencing Supply and Install	LF	307	\$5.00	\$1,535.00
3	Furnish and install silt fence	LF	560	\$3.50	\$1,960.00
4	Furnish and install inlet protection	EA	11	\$200.00	\$2,200.00
5	Furnish and install 8' high Chain link construction fence	LF	833	\$10.00	\$8,330.00
6	Sawcut Pavement	LF	930	\$10.00	\$9,300.00
7	Remove and haul off existing concrete pavement	SY	125	\$30.00	\$3,750.00
8	Remove and haul off concrete curb & gutter	LF	407	\$30.00	\$12,210.00
9	Remove and haul off existing asphalt pavement	SY	3550	\$30.00	\$106,500.00
10	Remove and haul off timbers	LF	146	\$9.50	\$1,387.00
11	Remove and haul off existing catch basin	EACH	1	\$750.00	\$750.00
12	Remove and haul off existing chain link fence, posts and foundations	LF	460	\$25.00	\$11,500.00
13	Remove and haul off existing benches and pads	EACH	4	\$250.00	\$1,000.00
14	Remove and haul off mulch	SY	1080	\$7.50	\$8,100.00
15	Remove and haul off playground equipment, foundations, playground surface, etc.	LS	1	\$10,000.00	\$10,000.00
<b>Subtotal Removals and Site Preparation</b>					<b>\$180,022.00</b>

**Tree Root Pruning**

16	Root Prune trees performed by a Certified Arborist/Tree Surgeon as Identified on the drawings prior to construction activities	LF	60	\$10.00	\$600.00
----	--	----	----	---------	----------

**Site Grading and Excavation**

17	Perform all grading and excavation to obtain sub grades for pavement and other grading requirements as shown or noted on the Plans and in accordance with the specifications	LS	1	\$29,000.00	\$29,000.00
18	Remove and haul subbase	LS	1	\$42,500.00	\$42,500.00
<b>Subtotal Site Grading and Excavation</b>					<b>\$71,500.00</b>

**Paving and Surface**

19	Furnish and install 5" Thick walk, including site furnishing pads as shown on the drawings. (see eng detail)	SF	2300	\$7.00	\$16,100.00
20	Furnish and install 8" Thick concrete as shown on the drawings. (see eng detail)	SF	187	\$9.00	\$1,683.00
21	Furnish and install asphalt patch as shown on the drawings. (see eng detail)	SY	390	\$50.00	\$19,500.00
22	Furnish and install 3" mulch shown on the drawings. (see specifications)	SY	744	\$9.00	\$6,696.00
23	Furnish and install 6" flush curb as shown on the drawings. (see eng detail)	LF	715	\$15.00	\$10,725.00
24	Furnish and install 6" non flush curb as shown on the drawings. (see eng detail)	LF	150	\$18.00	\$2,700.00
25	Furnish and install impermeable liner as shown on the drawings (see eng detail)	SF	25480	\$1.50	\$38,220.00
26	Furnish and install removable panel for manhole under field (see eng detail)	EA	1	\$450.00	\$450.00
27	Furnish and install nailer board (see eng detail)	LF	655	\$8.00	\$5,240.00
28	Furnish and install synthetic turf field (including color markings)	SF	25480	\$5.50	\$140,140.00
29	Furnish, install and fine grade min 6" Vulcan 210 aggregate base course (see eng detail)	SY	2831	\$5.00	\$14,155.00
30	Pavement Markings in parking area	LS	1	\$400.00	\$400.00
31	Mill and Relay 2" asphalt surface	SY	1850	\$22.00	\$40,700.00
32	Leveling Binder (Machine Course), N 50	Ton	106	\$85.00	\$9,010.00
33	Full Depth Concrete Patch in mill area - 8" CA-6, 4" Asphalt Binder Course N50 (Surface Course included in item directly above). Quantity to be measured in field by engineer.	SY	270	\$50.00	\$13,500.00
<b>Subtotal Paving and Surface</b>					<b>\$319,219.00</b>

**Utilities**

34	48" Catch Basin, including riser, half trap & trench backfill	EA	5	\$2,400.00	\$12,000.00
35	Furnish and install 18" Reinforced Concrete Pipe, including trench backfill	LF	427	\$24.00	\$10,248.00
36	Furnish and install 8" PVC pipe SDR 26	LF	39	\$15.00	\$585.00
37	Furnish and install ADS Advanedge 1"x12" drains and all associated appertances to connect the Advanedge pipes to the sewer mains (see eng details)	LF	1,210	\$12.00	\$14,520.00
<b>Subtotal Utilities</b>					<b>\$37,353.00</b>

Item	Unit	Qty	Unit Price	Total
------	------	-----	------------	-------

**IRVING ELEMENTARY SCHOOL - Base BID**

**Apparatus Area**

38	Apparatus: Furnish and install Kompan <b>STELLA NOVA GXV944</b> as shown and noted on the plan and in play equipment schedule.	EA	1	\$9,770.60	\$9,770.60
39	Apparatus: Furnish and install Kompan <b>PERFORMER DOME COR8842</b> as shown and noted on the plan and in play equipment schedule.	EA	1	\$46,230.80	\$46,230.80
40	Apparatus: Furnish and install Kompan <b>COROCORD PACKAGE PAK-10/2</b> as shown and noted on the plan and in play equipment schedule.	EA	1	\$16,928.80	\$16,928.80
41	Apparatus: Furnish and install Landscape Structures <b>CUSTOM PLAY</b> (CODE:OAK12IRV8C) noted on the plan and in play equipment schedule.	EA	1	\$85,687.00	\$85,687.00
42	Apparatus: Furnish and install Landscape Structures <b>QMNISPIN SPINNER</b> noted on the plan and in play equipment schedule.	EA	1	\$8,330.00	\$8,330.00
43	Apparatus: Furnish and install Landscape Structures <b>SNACK SHACK</b> noted on the plan and in play equipment schedule.	EA	1	\$6,692.00	\$6,692.00
<b>Subtotal Apparatus Area</b>					<b>\$173,639.20</b>

**Site Furniture**

44	Furnish and install 8' long backless IPE bench (surface mount) as shown on plans.	EA	1	\$1,001.00	\$1,001.00
45	Furnish and install 8' long backed IPE bench (surface mount) as shown on plans.	EA	2	\$1,708.00	\$3,416.00
46	Furnish and install star bench (small)	EA	4	\$1,204.00	\$4,816.00
47	Furnish and install trash enclosure fence	LF	45	\$100.00	\$4,500.00
48	Furnish and install fence around synthetic field	LF	400	\$75.00	\$30,000.00
49	Furnish and install 4' ht. chain link fence gate (single)	EA	1	\$500.00	\$500.00
50	Furnish and install 4' ht. chain link fence gate (double single)	EA	1	\$1,000.00	\$1,000.00
<b>Subtotal Site Furniture</b>					<b>\$45,233.00</b>

**Site Landscape Plantings**

51	Populus tremuloides, 2" CAL.	EA	4	\$378.00	\$1,512.00
52	Ulmus 'Accolade', 3" CAL	EA	5	\$516.08	\$2,580.38
53	Crataegus crusgalli var. inermis, 3" CAL	EA	3	\$400.58	\$1,201.73
54	Amelanchier x grandiflora 'Autumn Brilliance', 48" HT.	EA	2	\$157.50	\$315.00
55	Cornus racemosa, 48" HT.	EA	3	\$51.98	\$155.93
56	Hamamelis vernalis, 48" HT.	EA	1	\$182.70	\$182.70
57	Itea virginica 'Little Henry', #3 CONT.	EA	13	\$47.78	\$621.08
<b>Subtotal Site Landscape Plantings</b>					<b>\$6,568.80</b>

<b>TOTAL FOR BASE BID</b>				<b>\$834,135.00</b>
<b>10% CONTINGENCY</b>				<b>\$83,413.50</b>
<b>GRAND TOTAL FOR BASE BID - IRVING ELEMENTARY SCHOOL</b>				<b>\$917,548.50</b>

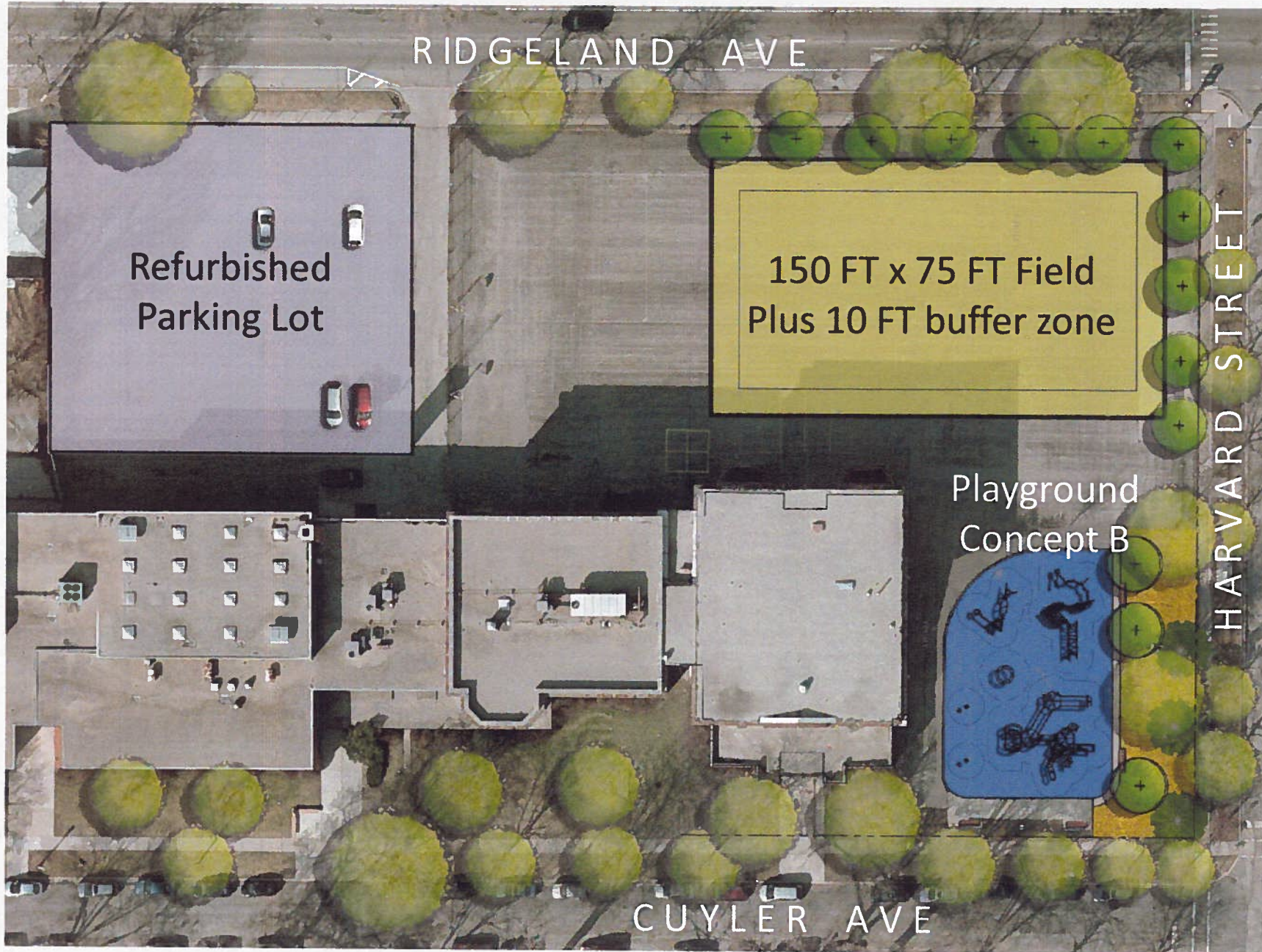
**PLAYGROUND RUBBER SURFACING**

Furnish and install concrete base to receive synthetic rubber surfacing at all playground surfaces	SF	6,200	\$7.00	\$43,400.00
Furnish and install synthetic rubber surfacing at all playground surfaces	SF	6,200	\$14.00	\$86,800.00
<b>TOTAL</b>				<b>\$130,200.00</b>
<b>10% CONTINGENCY</b>				<b>\$13,020.00</b>
<b>GRAND TOTAL FOR RUBBER SURFACING - IRVING ELEMENTARY SCHOOL</b>				<b>\$143,220.00</b>

<b>GRAND TOTAL FOR BASE BID INCLUDING RUBBER SURFACING- IRVING ELEMENTARY SCHOOL</b>				<b>\$1,060,768.50</b>
--	--	--	--	-----------------------

All items not listed shall be considered incidental to the contract.

# Alternate 1:





# Alternate 1 Opinion of Probable Costs:

## Refurbished Parking Lot:

Alternate II Mill and Relay Existing Parking Lot, New Fence & Concrete Trash Enclosure	<b>\$81,240</b>
---	-----------------

## 150 FT x 75 FT Field:

REMOVALS & EXCAVATION	\$230,950
ARTIFICIAL SURFACING	\$130,008
DRAINAGE & UTILITIES	\$68,562
NEW TREES & TOPSOIL	\$24,300
NEW FENCE	\$21,450
<b>SUBTOTAL</b>	<b>\$475,270</b>
10% CONTINGENCY	\$47,527
<b>TOTAL FOR FIELD</b>	<b>\$522,797</b>

## New Playground (Concept B):

REMOVALS	\$19,800
SITE GRADING, EXCAVATION, DRAINAGE & UTILITIES:	\$10,500
ASPHALT AND CONC. WALK	\$27,450
PLAY EQUIPMENT & RUBBER SURFACE	\$272,080
SITE FURNITURE & LANDSCAPES	\$18,872
<b>SUBTOTAL</b>	<b>\$348,702</b>
10% CONTINGENCY	\$34,870
<b>TOTAL FOR IRVING SCHOOL PLAYGROUND IMPROVEMENTS</b>	<b>\$383,572</b>

# Alternate 1 Opinion of Probable Costs:

# \$987,609

Add add'l \$160,000 for sport lighting

Item	Unit	Qty	Unit Price	Total
------	------	-----	------------	-------

**IRVING ELEMENTARY SCHOOL - Alternate 1**

**Removals and Site Preparation**

1	Construction Entrance	EA	1	\$1,500.00	\$1,500.00
2	Tree Protection Fencing Supply and Install	LF	307	\$5.00	\$1,535.00
3	Furnish and install silt fence	LF	535	\$3.50	\$1,872.50
4	Furnish and install inlet protection	EA	10	\$200.00	\$2,000.00
5	Furnish and install 8' high Chain link construction fence	LF	833	\$10.00	\$8,330.00
6	Sawcut Pavement	LF	1045	\$10.00	\$10,450.00
7	Remove and haul off existing concrete pavement	SY	125	\$30.00	\$3,750.00
8	Remove and haul off concrete curb & gutter	LF	381	\$30.00	\$11,430.00
9	Remove and haul off existing asphalt pavement	SY	2550	\$30.00	\$76,500.00
10	Remove and haul off timbers	LF	0	\$8.00	\$0.00
11	Remove and haul off existing catch basin	EACH	1	\$750.00	\$750.00
12	Remove and haul off existing chain link fence, posts and foundations	LF	435	\$25.00	\$10,875.00
13	Remove and haul off existing benches and pads	EACH	4	\$250.00	\$1,000.00
14	Remove and haul off mulch	SY	1080	\$7.50	\$8,100.00
15	Remove and haul off playground equipment, foundations, playground surface, etc.	LS	1	\$10,000.00	\$10,000.00
<b>Subtotal Removals and Site Preparation</b>					<b>\$148,092.50</b>

**Tree Root Pruning**

16	Root Prune trees performed by a Certified Arborist/Tree Surgeon as Identified on the drawings prior to construction activities	LF	60	\$10.00	\$600.00
----	--	----	----	---------	----------

**Site Grading and Excavation**

17	Perform all grading and excavation to obtain sub grades for pavement and other grading requirements as shown or noted on the Plans and in accordance with the specifications	LS	1	\$29,000.00	\$29,000.00
18	Remove and haul SUBBASE	LS	1	\$34,000.00	\$34,000.00
<b>Subtotal Site Grading and Excavation</b>					<b>\$63,000.00</b>

**Paving and Surface**

19	Furnish and install 5" Thick walk, including site furnishing pads as shown on the drawings. (see eng detail)	SF	2400	\$7.00	\$16,800.00
20	Furnish and install 8" Thick concrete as shown on the drawings. (see eng detail)	SF	187	\$9.00	\$1,683.00
21	Furnish and install asphalt patch as shown on the drawings. (see eng detail)	SY	275	\$50.00	\$13,750.00
22	Furnish and install 3" mulch shown on the drawings. (see specifications)	SY	744	\$9.00	\$6,696.00
23	Furnish and install 6" flush curb as shown on the drawings. (see eng detail)	LF	590	\$15.00	\$8,850.00
24	Furnish and install 6" non flush curb as shown on the drawings. (see eng detail)	LF	195	\$18.00	\$3,510.00
25	Furnish and install impermeable liner as shown on the drawings (see eng detail)	SF	16150	\$1.50	\$24,225.00
26	Furnish and install removable panel for manhole under field (see eng detail)	EA	1	\$450.00	\$450.00
27	Furnish and install nailer board (see eng detail)	LF	530	\$8.00	\$4,240.00
28	Furnish and install synthetic turf field (including color markings)	SF	16150	\$5.50	\$88,825.00
29	Furnish, install and fine grade min 6" Vulcan 210 aggregate base course (see eng detail)	SY	1795	\$5.00	\$8,975.00
30	Pavement Markings in parking area	LS	1	\$400.00	\$400.00
31	Mill and Relay 2" asphalt surface	SY	1850	\$22.00	\$40,700.00
32	Leveling Binder (Machine Course), N 50	Ton	106	\$85.00	\$9,010.00
33	Full Depth Concrete Patch in mill area - 8" CA-6, 4" Asphalt Binder Course N50 (Surface Course included in item directly above). Quantity to be measured in field by engineer.	SY	270	\$50.00	\$13,500.00
<b>Subtotal Paving and Surface</b>					<b>\$241,614.00</b>

**Utilities**

34	48" Catch Basin, including riser, half trap & trench backfill	EA	4	\$2,400.00	\$9,600.00
35	Furnish and install 18" Reinforced Concrete Pipe, including trench backfill	LF	335	\$24.00	\$8,040.00
36	Furnish and install 8" PVC pipe SDR 26	LF	41	\$15.00	\$615.00
37	Furnish and install ADS Advanedge 1"x12" drains and all associated appertances to connect the Advanedge pipes to the sewer mains (see eng details)	LF	750	\$12.00	\$9,000.00
<b>Subtotal Utilities</b>					<b>\$27,255.00</b>

**Apparatus Area**

38	Apparatus: Furnish and install Kompan <b>STELLA NOVA GKY944</b> as shown and noted on the plan and in play equipment schedule.	EA	1	\$9,770.60	\$9,770.60
39	Apparatus: Furnish and install Kompan <b>PERFORMER DOME COR8842</b> as shown and noted on the plan and in play equipment schedule.	EA	1	\$46,230.80	\$46,230.80
40	Apparatus: Furnish and install Kompan <b>COROCORD PACKAGE PAK-10/Z</b> as shown and noted on the plan and in play equipment schedule.	EA	1	\$16,928.80	\$16,928.80
41	Apparatus: Furnish and install Landscape Structures <b>CUSTOM PLAY</b> (CODE:OAK12IRV8C) noted on the plan and in play equipment schedule.	EA	1	\$85,687.00	\$85,687.00
42	Apparatus: Furnish and install Landscape Structures <b>OMNISPIN SPINNER</b> noted on the plan and in play equipment schedule.	EA	1	\$8,330.00	\$8,330.00
43	Apparatus: Furnish and install Landscape Structures <b>SNACK SHACK</b> noted on the plan and in play equipment schedule.	EA	1	\$6,692.00	\$6,692.00
<b>Subtotal Apparatus Area</b>					<b>\$173,639.20</b>

**Site Furniture**

44	Furnish and install 8' long backless IPE bench (surface mount) as shown on plans.	EA	1	\$1,001.00	\$1,001.00
45	Furnish and install 8' long backed IPE bench (surface mount) as shown on plans.	EA	2	\$1,708.00	\$3,416.00
46	Furnish and install star bench (small)	EA	4	\$1,204.00	\$4,816.00
47	Furnish and install trash enclosure fence	LF	45	\$100.00	\$4,500.00
48	Furnish and install fence around synthetic field	LF	400	\$75.00	\$30,000.00
49	Furnish and install 4' ht. chain link fence gate (single)	EA	1	\$500.00	\$500.00
50	Furnish and install 4' ht. chain link fence gate (double single)	EA	1	\$1,000.00	\$1,000.00
<b>Subtotal Site Furniture</b>					<b>\$45,233.00</b>

**Site Landscape Plantings**

51	Celtis occidentalis, 3" CAL	EA	3	\$453.08	\$1,359.23
52	Populus tremuloides, 2" CAL	EA	4	\$378.00	\$1,512.00
53	Ulmus 'Accolade', 3" CAL.	EA	5	\$516.08	\$2,580.38
54	Crataegus crusgalli var. inermis, 3" CAL	EA	3	\$400.58	\$1,201.73
55	Syringa pekinensis 'China Snow', 3" CAL	EA	3	\$642.08	\$1,926.23
56	Amelanchier x grandiflora 'Autumn Brilliance', 48" HT.	EA	2	\$157.50	\$315.00
57	Cornus racemosa, 48" HT.	EA	3	\$51.98	\$155.93
58	Hamamelis vernalis, 48" HT.	EA	1	\$182.70	\$182.70
59	Itea virginica 'Little Henry', #3 CONT.	EA	13	\$47.78	\$621.08
<b>Subtotal Site Landscape Plantings</b>					<b>\$9,854.25</b>

<b>TOTAL FOR ALTERNATE 1</b>				<b>\$709,287.95</b>
<b>10% CONTINGENCY</b>				<b>\$70,928.80</b>
<b>GRAND TOTAL FOR ALTERNATE 1 - IRVING ELEMENTARY SCHOOL</b>				<b>\$780,216.75</b>

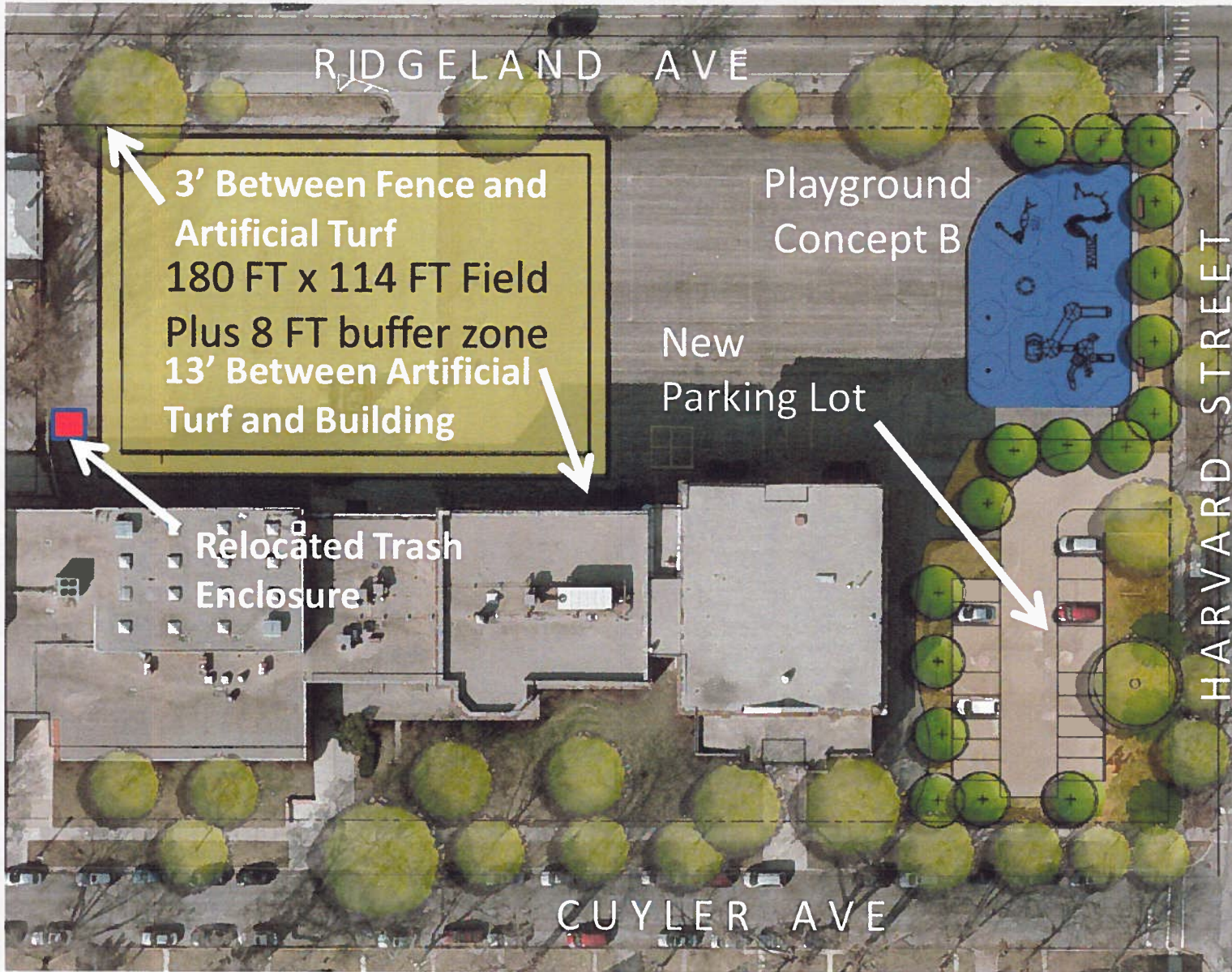
**PLAYGROUND RUBBER SURFACING**

Furnish and install concrete base to receive synthetic rubber surfacing at all playground surfaces	SF	6,200	\$7.00	\$43,400.00
Furnish and install synthetic rubber surfacing at all playground surfaces	SF	6,200	\$14.00	\$86,800.00
<b>TOTAL</b>				<b>\$130,200.00</b>
<b>10% CONTINGENCY</b>				<b>\$13,020.00</b>
<b>GRAND TOTAL FOR RUBBER SURFACING - IRVING ELEMENTARY SCHOOL</b>				<b>\$143,220.00</b>

<b>GRAND TOTAL FOR ALTERNATE 1 INCLUDING RUBBER SURFACING - IRVING ELEMENTARY SCHOOL</b>				<b>\$923,436.75</b>
--	--	--	--	---------------------

All items not listed shall be considered incidental to the contract.

# Alternate 2:







# Alternate 2 Opinion of Probable Costs:

## Parking Lot (new):

REMOVALS & EXCAVATION	\$25,550.00
GRADING	\$6,000.00
DRAINAGE & UTILITIES	\$16,000.00
NEW PAVING, CURB AND GUTTER	\$60,031.25
NEW FENCE	\$14,300.00
NEW TREES, SOIL AND SOD	\$24,900.00
SUBTOTAL	\$146,781.25
10% CONTINGENCY	\$14,678.13
TOTAL FOR PARKING LOT	\$161,459.38

## 180 FT x 114 FT Field:

REMOVALS & EXCAVATION	\$280,370.00
ARTIFICIAL SURFACING	\$209,847.40
DRAINAGE & UTILITIES	\$105,755.00
NEW SHRUBS & TOPSOIL	\$7,056.00
NEW FENCE	\$23,400.00
RELOCATED TRASH	\$8,000.00
SUBTOTAL	\$634,428.40
10% CONTINGENCY	\$63,442.84
TOTAL FOR FIELD	\$697,871.24

## New Playground (Concept B):

REMOVALS	\$56,050.00
SITE GRADING, EXCAVATION, DRAINAGE & UTILITIES	\$13,000.00
ASPHALT AND CONCRETE WALK	\$27,450.00
PLAY EQUIPMENT & RUBBER SURFACE	\$272,080.00
SITE FURNITURE & LANDSCAPES	\$23,471.00
NEW FENCE	\$14,300.00
SUBTOTAL	\$406,351.00
10% CONTINGENCY	\$40,635.10
TOTAL FOR PLAYGROUND	\$446,986.10

## Alternate 2 Opinion of Probable Costs:

**\$1,306,316.72**

Add add'l \$160,000 for sport lighting

Item	Unit	Qty	Unit Price	Total
------	------	-----	------------	-------

**IRVING ELEMENTARY SCHOOL - Alternate 2**

**Removals and Site Preparation**

1	Construction Entrance	EA	1	\$1,500.00	\$1,500.00
2	Tree Protection Fencing Supply and Install	LF	307	\$5.00	\$1,535.00
3	Remove Trees 8" caliper or larger and grind stump to depth of 12"	EA	2	\$500.00	\$1,000.00
4	Furnish and install silt fence	LF	455	\$3.50	\$1,592.50
5	Furnish and install Inlet protection	EA	9	\$200.00	\$1,800.00
6	Furnish and install 8' high Chain link construction fence	LF	890	\$10.00	\$8,900.00
7	Sawcut Pavement	LF	610	\$10.00	\$6,100.00
8	Remove and haul off existing concrete pavement	SY	196	\$30.00	\$5,880.00
9	Remove and haul off concrete curb & gutter	LF	486	\$30.00	\$14,580.00
10	Remove and haul off existing asphalt pavement	SY	5550	\$30.00	\$166,500.00
11	Remove and haul off timbers	LF	50	\$8.00	\$400.00
12	Remove and haul off existing catch basin	EACH	2	\$750.00	\$1,500.00
13	Remove and haul off existing chain link fence, posts and foundations	LF	785	\$6.00	\$4,710.00
14	Remove and haul off existing benches and pads	EACH	4	\$250.00	\$1,000.00
15	Remove and haul off mulch	SY	1080	\$7.50	\$8,100.00
16	Remove and haul off playground equipment, foundations, playground surface, etc.	LS	1	\$10,000.00	\$10,000.00
<b>Subtotal Removals and Site Preparation</b>					<b>\$235,097.50</b>

**Tree Root Pruning**

17	Root Prune trees performed by a Certified Arborist/Tree Surgeon as identified on the drawings prior to construction activities	LF	60	\$10.00	\$600.00
----	--	----	----	---------	----------

**Site Grading and Excavation**

18	Perform all grading and excavation to obtain sub grades for pavement and other grading requirements as shown or noted on the Plans and in accordance with the specifications	LS	1	\$32,000.00	\$32,000.00
19	Remove and haul off subbase	LS	1	\$57,000.00	\$57,000.00
<b>Subtotal Site Grading and Excavation</b>					<b>\$89,000.00</b>

**Paving and Surface**

20	Furnish and Install 5" Thick walk, including site furnishing pads as shown on the drawings. (see eng detail)	SF	3500	\$7.00	\$24,500.00
21	Furnish and install 8" Thick concrete as shown on the drawings. (see eng detail)	SF	710	\$9.00	\$6,390.00
22	Furnish and install asphalt patch as shown on the drawings. (see eng detail)	SY	1440	\$50.00	\$72,000.00
23	Furnish and install 3" mulch shown on the drawings. (see specifications)	SY	1500	\$9.00	\$13,500.00
24	Furnish and install 6" flush curb as shown on the drawings. (see eng detail)	LF	690	\$15.00	\$10,350.00
25	Furnish and install 6" non flush curb as shown on the drawings. (see eng detail)	LF	305	\$18.00	\$5,490.00
26	Furnish and install impermeable liner as shown on the drawings (see eng detail)	SF	25480	\$1.50	\$38,220.00
27	Furnish and install nailer board (see eng detail)	LF	655	\$8.00	\$5,240.00
28	Furnish and install synthetic turf field (including color markings)	SF	25480	\$5.50	\$140,140.00
29	Furnish, install and fine grade min 6" Vulcan 210 aggregate base course (see eng detail)	SY	2831	\$5.00	\$14,155.00
30	Pavement Markings in parking area	LS	1	\$300.00	\$300.00
<b>Subtotal Paving and Surface</b>					<b>\$330,285.00</b>

**Utilities**

31	48" Catch Basin, including riser, half trap & trench backfill	EA	4	\$2,400.00	\$9,600.00
32	Furnish and install 18" Reinforced Concrete Pipe, including trench backfill	LF	439	\$24.00	\$10,536.00
33	Furnish and install 8" PVC pipe SDR 26	LF	41	\$15.00	\$615.00
34	Furnish and install ADS Advanedge 1"x12" drains and all associated appertances to connect the Advanedge pipes to the sewer mains (see eng details)	LF	1,210	\$12.00	\$14,520.00
<b>Subtotal Utilities</b>					<b>\$35,271.00</b>

**Apparatus Area**

35	Apparatus: Furnish and install Kompan <b>STELLA NOVA GXY944</b> as shown and noted on the plan and in play equipment schedule.	EA	1	\$9,770.60	\$9,770.60
35	Apparatus: Furnish and install Kompan <b>PERFORMER DOME COR8842</b> as shown and noted on the plan and in play equipment schedule.	EA	1	\$46,230.80	\$46,230.80
36	Apparatus: Furnish and install Kompan <b>CORCORD PACKAGE PAK-10/2</b> as shown and noted on the plan and in play equipment schedule.	EA	1	\$16,928.80	\$16,928.80

37	Apparatus: Furnish and install Landscape Structures <b>CUSTOM PLAY</b> (CODE:OAK12IRV8C) noted on the plan and in play equipment schedule.	EA	1	\$85,687.00	\$85,687.00
38	Apparatus: Furnish and install Landscape Structures <b>OMNISPIN SPINNER</b> , noted on the plan and in play equipment schedule.	EA	1	\$8,330.00	\$8,330.00
39	Apparatus: Furnish and install Landscape Structures <b>SNACK SHACK</b> noted on the plan and in play equipment schedule.	EA	1	\$6,692.00	\$6,692.00
<b>Subtotal Apparatus Area</b>					<b>\$173,639.20</b>

**Site Furniture**

40	Furnish and install 8' long backed (PE bench (surface mount) as shown on plans.	EA	3	\$1,708.00	\$5,124.00
41	Furnish and install star bench (small)	EA	4	\$1,204.00	\$4,816.00
42	Furnish and install star bench (LARGE)	EA	1	\$1,568.00	\$1,568.00
43	Furnish and install trash enclosure fence	LF	110	\$100.00	\$11,000.00
44	Furnish and install fence around synthetic field	LF	600	\$75.00	\$45,000.00
45	Furnish and install 4' ht. chain link fence gate (double single)	EA	1	\$1,000.00	\$1,000.00
<b>Subtotal Site Furniture</b>					<b>\$68,508.00</b>

**Site Landscape Plantings**

46	<i>Catalpa speciosa</i> , 3" CAL.		3	\$663.08	\$1,989.23
47	<i>Cellis occidentalis</i> , 3" CAL.		3	\$630.00	\$1,890.00
48	<i>Melaleuca glyptostroboides</i> , 3" CAL.		2	\$785.40	\$1,570.80
49	<i>Platanus 'Exclamation'</i> , 3" CAL.		3	\$621.08	\$1,863.23
50	<i>Populus tremuloides</i> , 2" CAL.		6	\$378.00	\$2,268.00
51	<i>Catalpa speciosa</i> var. <i>inermis</i> , 3" Cal.		3	\$400.58	\$1,201.73
52	<i>Amelanchier x grandiflora 'Autumn Brilliance'</i> , 48" ht.		3	\$157.50	\$472.50
53	<i>Aronia melanocarpa 'Joquis Beauty'</i> , 36" ht.		40	\$68.78	\$2,751.00
54	<i>Cornus racemosa</i> , 48" ht.		7	\$51.98	\$363.83
55	<i>Corylus americana</i> , 42" ht.		1	\$66.68	\$66.68
56	<i>Hamamelis virginica</i> , 48" ht.		1	\$182.70	\$182.70
57	<i>Ilex virginica 'Little Henry'</i> , #3 cont		20	\$47.78	\$955.50
58	<i>Viburnum 'Blue Muffin'</i> , 36" ht.		3	\$57.23	\$171.68
59	<i>Allium 'Summer Beauty'</i> , quart		105	\$8.13	\$853.13
60	<i>Bouteloua curtipendula</i> , quart		210	\$8.75	\$1,837.50
61	<i>Echinacea pallida</i> , quart		105	\$8.75	\$918.75
62	<i>Panicum virgatum 'Northwind'</i> , quart		105	\$8.75	\$918.75
63	<i>Panicum virgatum 'Shenadoah'</i> , quart		315	\$8.75	\$2,756.25
64	<i>Schizachyrium scoparium</i> , quart		105	\$8.75	\$918.75
65	<i>Solidago rugosa 'Fireworks'</i> , quart		105	\$8.75	\$918.75
<b>Subtotal Site Landscape Plantings</b>					<b>\$24,868.73</b>

<b>TOTAL FOR ALTERNATE 2</b>					<b>\$957,269.43</b>
<b>10% CONTINGENCY</b>					<b>\$95,726.94</b>
<b>GRAND TOTAL FOR ALTERNATE 2- IRVING ELEMENTARY SCHOOL</b>					<b>\$1,052,996.37</b>

**PLAYGROUND RUBBER SURFACING**

Furnish and install concrete base to receive synthetic rubber surfacing at all playground surfaces	SF	6,500	\$7.00	\$45,500.00
Furnish and install synthetic rubber surfacing at all playground surfaces	SF	6,500	\$14.00	\$91,000.00
<b>TOTAL</b>				<b>\$136,500.00</b>
<b>10% CONTINGENCY</b>				<b>\$13,650.00</b>
<b>GRAND TOTAL FOR RUBBER SURFACING - IRVING ELEMENTARY SCHOOL</b>				<b>\$150,150.00</b>

<b>GRAND TOTAL FOR ALTERNATE 2 INCLUDING RUBBER SURFACING- IRVING ELEMENTARY SCHOOL</b>					<b>\$1,203,146.37</b>
---	--	--	--	--	-----------------------

All items not listed shall be considered incidental to the contract

## Preliminary Review

### Oak Park Elementary Schools-District 97 Mann, Hatch, Whitter, and Irving Schools - 12/21/2012

- General: Use detail tags along with the callouts.
- General: The term "ADA Accessible" is preferred instead of handicapped.
- General: Is playground equipment detailed by the manufacturer? If not, provide foundation details for the playground equipment.
- Irving Layout: Base plan would be preferred for enhanced child safety. The alternate plan places the playground near three major streets.
- Erosion Plans: Limits line in legend does not match what is shown on the plan.
- Demo. Plans: Dimension pavement removal limits for contractor to quantify and locate work, especially the sawcuts.
- Demo. Plans: Differentiate the types of pavement removal (asphalt, concrete, etc.)
- Dim. Plans: Note #2-Ribbon curb does not have a gutter. Is this note needed?
- Utility Plans: Provide a legend for all utility plan sheets.
- C-201H: Label the boxes to the west of the project area. Pavement striping to remain?
- C-201H: Refer to tree protection details for trees to remain adjacent to demolition activities.
- C-201H: Confirm if Note #6 applies to this project.
- C-201H: Confirm if Note #17 applies to this project.
- C-201H: Call out timbers to be salvaged if they are being reused.
- C-202H: More dimensions are required to layout the proposed features.
- C-202H: Is Note #3 pertinent to this project? No building/parking work is proposed.
- C-203H: Proposed contours conflict with callouts indicating flush curb on the west side of the project.
- C-203H: Provide a spot elevation for the center of the central tree planter.
- C-203H: Confirm that proposed grades will accommodate the proposed play equipment.
- C-203H: Rubber slopes are steep on the East side of the playground. Will ADA access be provided to the area at the bottom of the slides?
- C-301I: Is fence adjacent to the south parking lot to remain? Consider adding call out for fence to be protected.
- C-301I: Identify locations for tree protection.
- C-302I: Show control joints for concrete sidewalk.
- C-302I: Remove 40 ft contour from the plan.
- C-302I: Show striping for the new artificial turf field.
- C-302I: Will the tree on the southwest side of the playground survive the adjacent curb construction?
- C-303I: Provide estimated elevations for the resurfaced parking lot.
- C-303I: Show drainage arrows to indicate runoff to flow toward the existing drainage structure.
- C-303I: How will pavement be removed so close to the existing fence without damaging the fence or foundations?
- C-303I: Spot grades make grading plan appear busy. Consider increasing spacing or removing some grades where slopes are constant.
- C-304I: How does the existing catchbasin in the parking lot drain to the sewer main? This line will likely also need to be rodded and cleaned.
- C-304I: What is the pipe size between the existing CB and MH west of the site? CB outlet shows 6" and MH inlet shows 8".
- C-304I: Why is RCP being used around the perimeter of the field? Is RCP necessary?

## Preliminary Review

- C-304I: Show the extents of the sewer line under the field. Can the field drain to this line instead of constructing a new sewer connection?
- C-304I: Details show both 2' and 3' diameter CBs. Specify size for each proposed CB.
- C-304I: What is the Cleanout tag east of the building pointing to?
- C-401M: Text is cut off by the viewport for "Alternative #5M: Existing Trash Enclosure Removal."
- C-401M: Suggest adding call out clarifying that the eastern manhole is to remain and should be protected.
- C-403M: There are some issues with the pdf printing for this sheet.
- C-403M: Does the existing manhole to the east have an open lid? Adjacent sidewalk appears to drain to this structure.
- C-403M: Suggest showing the street name east of the project.
- C-404M: Is there a half trap downstream of the existing manhole?
- C-404M: What should be done with the existing hole if it can't be used for the new pipe? Specify how hole should be plugged.
- C-404M: Should the new CB be installed so close to the proposed tree? Can this structure be an inlet instead?
- C-404M: Specify the type of PVC pipe to be used.
- C-501W: Are existing benches to be removed? If so, add callouts for scope.
- C-502W: If the pavement west of the building is asphalt, why would an expansion joint be needed?
- C-604: Barrier curb detail indicates adjacent track surface. Where is this shown?
- C-604: Barrier curb detail indicates a 1-3/4" pile height while the section calls for 2"+.
- C-604-Section: Confirm if MWRDGC will permit the proposed underdrain system.
- C-604-Section: Are the ADS Advanedge drains perforated? How do they drain?
- C-604-Section: Indicate on plan where the section is cut.
- C-604-Section: "This configuration..." note for pipe under pavement does not point to anything. Shift up?
- C-604-Section: Are the 2-45° bends required? Is there another way to connect the pipes that encourages better flow?
- C-604-Section: Is 6" of stone cover sufficient to protect the ADS drains from crushing during construction and by maintenance equipment?
- C-604-Section: Should subgrade beneath the turf field be compacted? Specify compaction criteria.
- C-604-Section: Surface slopes on the section do not match the grading design shown on the grading plan.