

School Spotlight

**Focus: Culture & Academic
Excellence**

**Building Strong Foundations for
early learners**



**May 20, 2026
Mrs. Gilligan
Principal**



Staff Development InStructional Systems

Strong, stable staffing

Partnership with The Children's
Cabinet

LearnERS modules

Training: RTI, BIP, Power of Language



Instructional Framework



Social-Emotional Learning

Developmentally Appropriate Practice

ECERS-aligned environments

Early learning academic standards

Creative Curriculum + TSG System

Ongoing data collection & progress monitoring



Floyd Elementary



Hafen Elementary



J.G. Johnson Elementary



Manse Elementary

Safe & Supportive Environment

SEL-based expectations

RTI & BIP implementation

Predictable routines & emotional supports

Re-establishing emergency drill procedures

Safe, structured learning environments



Family & Community Engagement

Eat & Greet

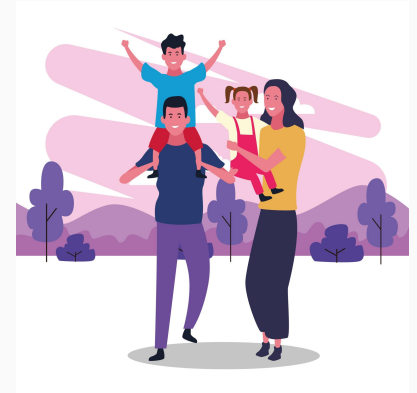
Fall Festival Float

Coffee & Conversations

Glow Dance

Color Me Healthy classroom lessons

Eat Smart, Being Active family classes



Striving for Academic Excellence

Results-driven
instruction

Measurable
student growth
goals

Data-informed
decision making

MT. CHARLESTON PRESCHOOL



Creative Curriculum
+ TSG

Kindergarten
readiness

Every staff member
plays a vital role in
student success

2025

FACULTY

2026