

**EXHIBIT "A"**

**1,650 SQUARE FOOT TRACT  
LEGAL DESCRIPTION**

**BEING** a 1,650 square foot tract out of Block 3, Medical Center Subdivision, as shown on a map recorded in Volume 53, Pages 144-145, Map Records, Nueces County, Texas, and being more particularly described as follows:

**BEGINNING** at a calculated point on the west right-of-way of 19<sup>th</sup> Street, for the southeast corner, and the **POINT of BEGINNING** of the herein described tract; **from WHENCE** a 5/8" iron rod was found on the said west right-of-way, for a corner of said Block 3, bears South 01°33'59" East, a distance of 177.84 feet.

**THENCE** North 18°27'07" West, a distance of 36.06 feet to a calculated point for an outside corner of the herein described tract;

**THENCE** North 01°43'42" West, a distance of 00.88 feet to a calculated point for an inside corner of the herein described tract;

**THENCE** South 88°16'18" West, a distance of 16.00 feet to a calculated point for an outside corner of the herein described tract;

**THENCE** North 01°43'42" West, a distance of 40.00 feet to a calculated point for an outside corner of the herein described tract;

**THENCE** North 88°16'18" East, a distance of 16.00 feet to a calculated point for an inside corner of the herein described tract;

**THENCE** North 01°43'42" West, a distance of 10.59 feet to a calculated point for an outside corner of the herein described tract;

**THENCE** North 09°34'53" East, a distance of 54.93 feet to a calculated point for an outside corner of the herein described tract;

**THENCE** South 01°33'59" East, with the west right-of-way of 19<sup>th</sup> Street, a distance of 139.88 feet to the **POINT OF BEGINNING** and containing 1,650 square feet of land.

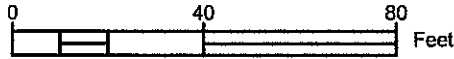
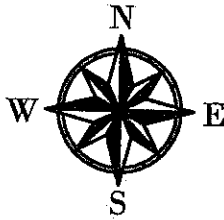
NOTE:  
ALL BEARINGS ARE GRID BEARINGS BASED ON THE TEXAS COORDINATE SYSTEM FOR THE LAMBERT SOUTH ZONE NAD 1983. SEPARATE MAP EXHIBIT "B" WITH EVEN DATE ACCOMPANIES THIS DESCRIPTION.

---

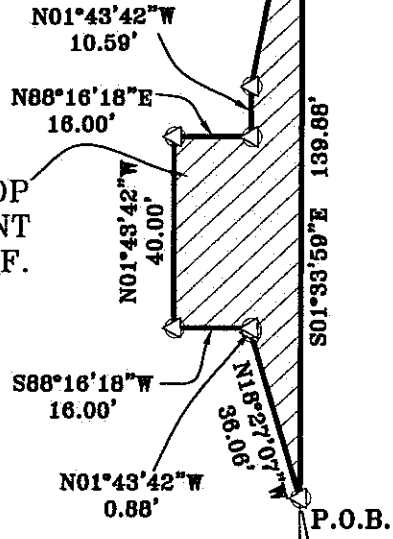
**Stacey King Mora, RPLS**  
**Registered Professional Land Surveyor**  
**Texas Registration No. 6166**  
**Hanson Professional Services Inc.**  
**TBPE F#417 TBPLS F# 100395-00**

**Date:** \_\_\_\_\_

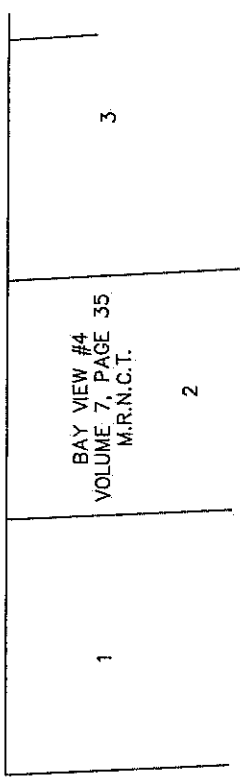
DRAFT



**BUS STOP  
EASEMENT  
1,650 S.F.**



BLOCK 3  
MEDICAL CENTER SUBDIVISION  
VOLUME 53, PAGES 144-145  
M.R.,N.C.,T.



**GENERAL NOTES:**

- 1.) COORDINATES ARE BASED ON THE TEXAS COORDINATE SYSTEM FOR THE LAMBERT SOUTH ZONE NAD83.
- 2.) SOME OBJECTS MAY BE DRAWN OUT OF SCALE FOR CLARITY.

**LEGEND:**

- = CALCULATED CORNER
- = 5/8" IRON ROD FOUND

I, Stacey King Mora, Registered Professional Land Surveyor, hereby certify that this survey map was prepared from an actual on the ground survey made under my direction and supervision, and represents the facts found at the time of survey, and that this survey substantially complies with the current standards adopted by the Texas Board of Professional Land Surveying.

Stacey King Mora  
Registered Professional Land Surveyor  
Texas Registration No. 6166

Hanson Professional Services Inc.  
Date: \_\_\_\_\_



TBPE F-417 / TBPLS F-10035500  
TBAE F-BR 2456 / TBPG F-50536

METES AND BOUNDS  
DESCRIPTION TO  
ACCOMPANY THIS PLAT.  
© Copyright Hanson Professional Services Inc. 2018

**EXHIBIT "B"**  
**BUS STOP EASEMENT**  
**1,650 SQUARE FEET**

BEING OUT OF BLOCK 3, MEDICAL CENTER SUBDIVISION,  
AS SHOWN ON A MAP RECORDED IN VOLUME 53, PAGES  
144-145, MAP RECORDS, NUECES COUNTY, TEXAS.

1610210-HPG-SIDEWALK-ESMT