



Aquila Elementary School

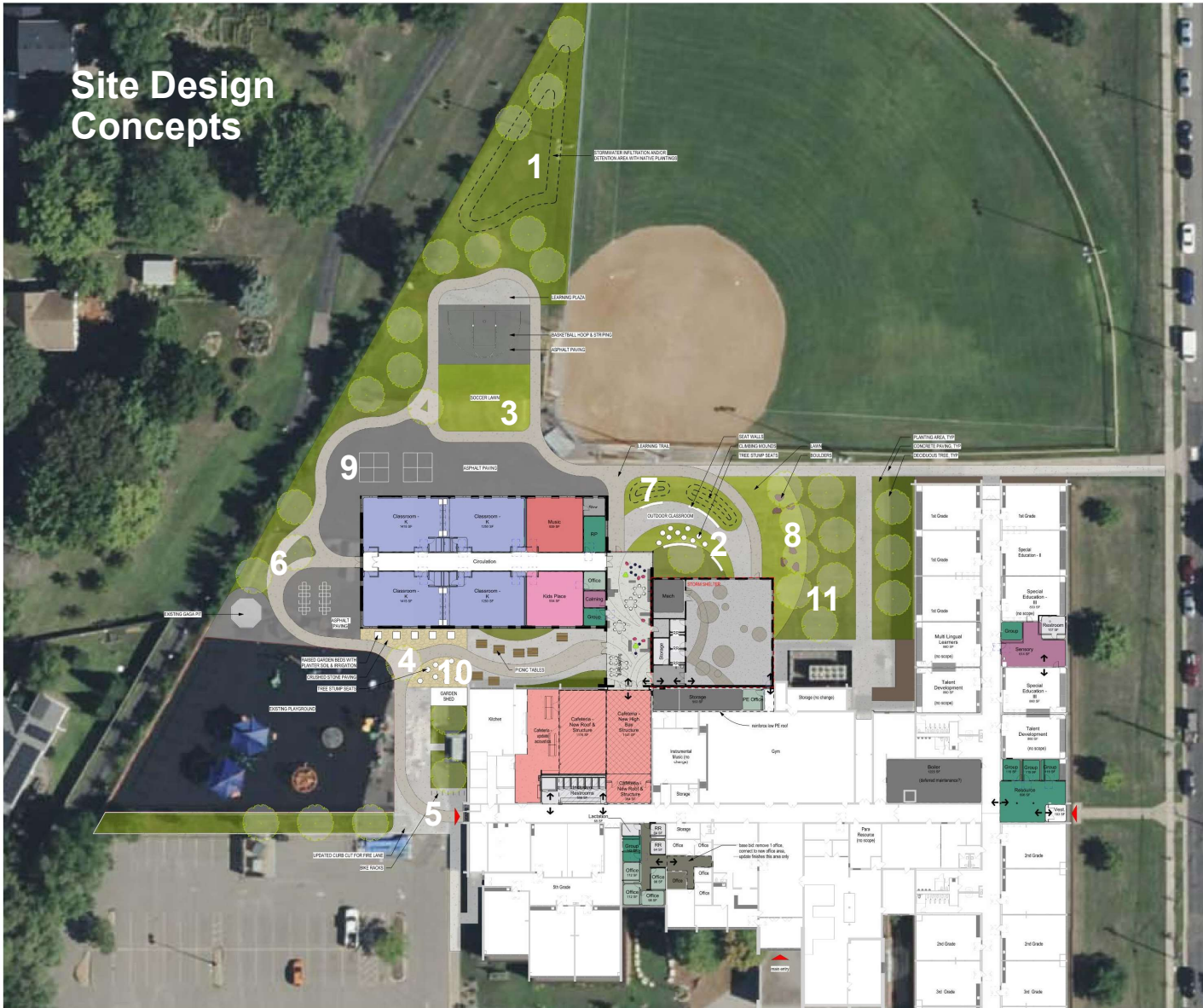
April 16, 2024
School Board Update

Cunningham

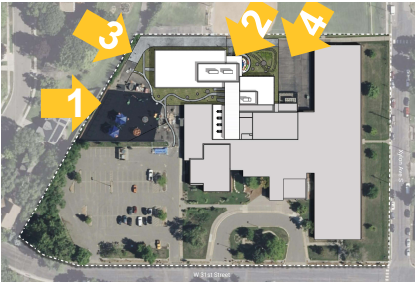
Proposed
Plan



Site Design Concepts



Exterior Renderings



Latané

Schools That Heal



WISE

DESIGN FOR BELONGING

HM
683
.W57
2022

Steve Maslin **Designing Mind-Friendly Environments**




PETER
BLOCK

COMMUNITY

THE STRUCTURE
OF BELONGING

HM
756
.B56
2018

FOSTERING RESILIENT LEARNERS  Kristin Souers with Pete Hall



THE HAPPY DESIGN TOOLKIT

Ben Channon



Trauma Informed Design
is just good design.

Defining “Trauma” for Trauma-Informed Approaches

“Individual trauma results from an event, series of events, or set of circumstances that is experienced by an individual as physically or emotionally harmful or life threatening and that has lasting adverse effects on the individual’s functioning and mental, physical, social, emotional, or spiritual well-being.”

- SAMHSA’s Concept of Trauma -

Two Sets of Six Principles

SAMHSA's 6 Principles to a Trauma-Informed Approach

Empowerment & Choice

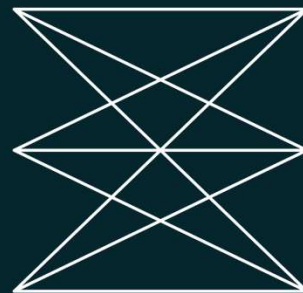
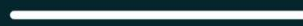
Safety

Peer Support

Cultural, Historical & Gender Issues

Collaboration & Mutuality

Trustworthiness & Transparency



DRH 6 Principles for Trauma-Informed Design

Empowerment & Personal Control

Security, Privacy & Personal Space

Sense of Community

Beauty and Meaning

Dignity & Self Esteem

Stress Management

Pabel, J. & Ellis, A., 2015. Trauma-Informed Design: Definitions and Strategies for Architectural Implementation, Tallahassee, FL: Design Resources for Homelessness.

Substance Abuse and Mental Health Services Administration, 2014. SAMHSA's Concept of Trauma and Guidance for a Trauma-Informed Approach, Rockville, MD: Substance Abuse and Mental Health Services Administration.

Design Approaches to Addressing Trauma Through Built Form

Passive

Spaces designed to be **less likely to trigger** trauma-based reactions by the nature of what is **included** in them and **what is not**

Intervening

Spaces designed to **help** those who are currently experiencing a trauma-based reaction to **recover** in a **healthy and supported** manner

Pattern identified through an extensive literature review of design strategies intended to promote wellbeing, embody trauma informed design principles, and create healthy environments

Empowerment & Personal Control

Encourage individual agency, welcome self-expression and offer choice for occupants

Strategies included in Aquila:

- Pinup Space for Personalization
- Choice Between Variety of Furniture Types / Activities
- Spaces that Encourage Movement and Play
- Space for Growing Plants and Hands-On Activities
- Writable Surfaces

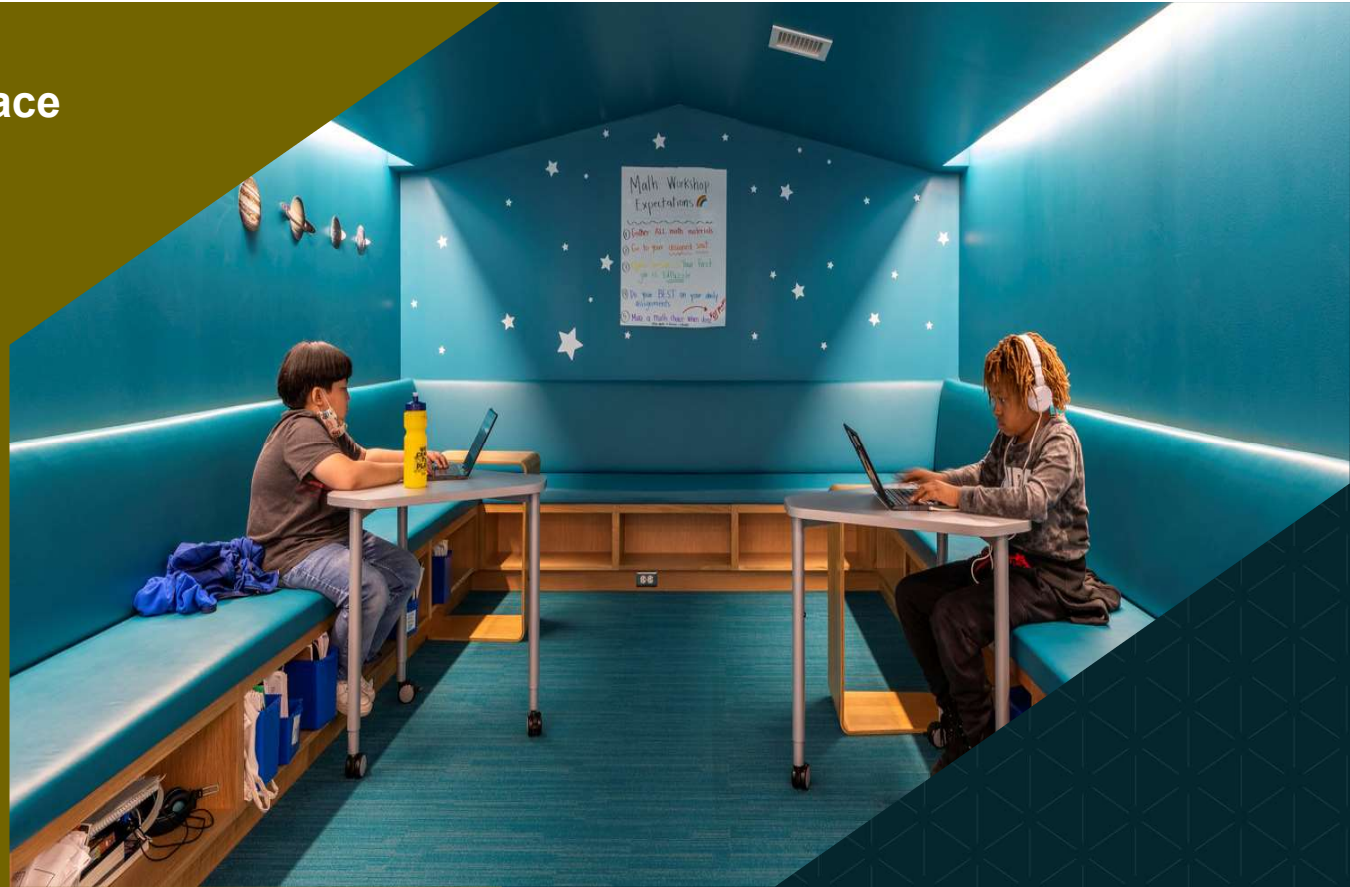


Safety, Privacy and Personal Space

Understand that perceived safety is crucial as basic safety. Prioritize clear wayfinding, sightlines and boundaries; minimize negative triggers; offer vantages of both prospect and refuge and paths of retreat; and recognize the role of program staff in creating a sense of safety and security

Strategies included in Aquila:

- Places of Refuge and Prospect
- Clear Wayfinding
- Inclusive Restrooms
- Area with Lower Ceilings immediately adjacent to multi-story spaces



Sense of Community

Create spaces that encourage camaraderie and collaboration and offer opportunities to belong

Strategies included in Aquila:

- Ties to Neighborhood, Community and Context
- Community Resources
- Learning Commons



Beauty and Meaning

Honor culture and identity while creating spaces that spark and nurture imagination, hope and aspiration

Strategies included in Aquila:

- Culturally Relevant Designs - Eagle Pattern
- Preference for Natural or Soft Materials
- Nature Walks and Learning Trails
- Accessible Courtyard
- Student Art Display



Dignity and Self Esteem

Celebrate each individual's inherent worth, communicating positivity, emphasizing strengths, and maximizing potential

Strategies included in Aquila:

- Equitable accessibility
- Welcoming entry
- Furniture and fixtures sized to occupant ages
- Project display spaces



Stress Management

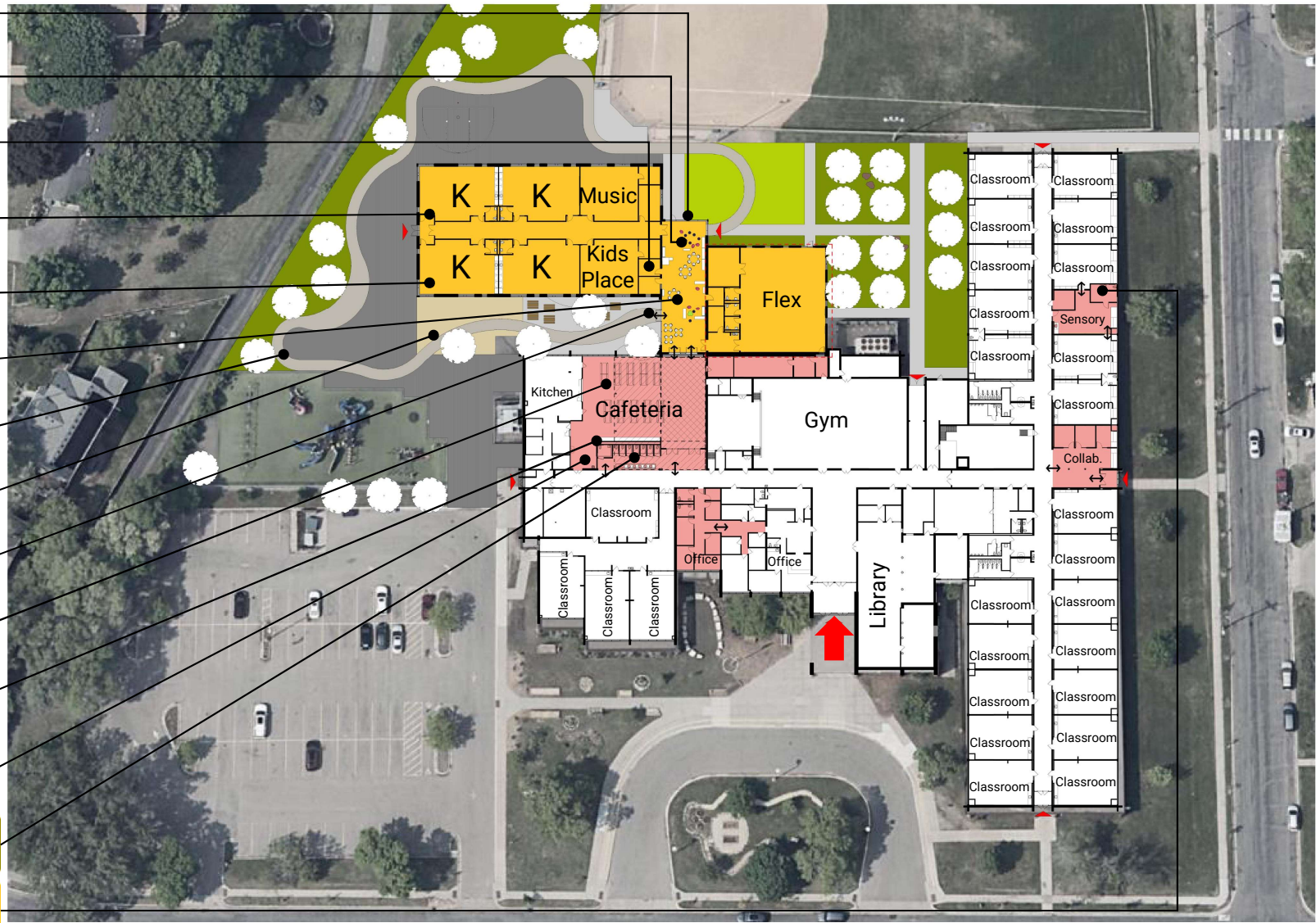
Cultivate a comfortable, calm ambiance that supports relaxation, self-soothing, stress management and coping through design details such as lighting, sound mitigation, natural elements and access to nature

Strategies included in Aquila:

- Plentiful Natural Lighting / Views
- Design for Ease of Cleaning
- Interior Lighting for Circadian Rhythms
- Seating Integrated into Windows
- Soft Textures and Forms
- Visual connection to outside



- Security, Privacy and Personal Space
- SPACES FOR "PROSPECT"
- Empowerment and Personal Control
- VARIETY OF FURNITURE TYPES AND ZONES
- Security, Privacy and Personal Space
- QUIET ZONE
- Dignity and Self Esteem
- FURNITURE AND FIXTURES SIZED TO YOUNGER OCCUPANTS
- Stress Management
- VISUAL CONNECTION TO THE OUTSIDE
- Sense of Community
- COLLABORATION SPACE
- Beauty and Meaning
- NATURE WALKS AND LEARNING TRAILS
- Empowerment and Personal Control
- SPACE FOR GROWING PLANTS / GREENHOUSES
- Sense of Community
- DIRECT CONNECTIONS TO THE EXTERIOR
- Stress Management
- ACOUSTIC SEPARATION / MITIGATION
- Sense of Community
- COMMUNITY RESOURCES
- Security, Privacy and Personal Space
- AREA WITH LOWER CEILINGS IMMEDIATELY ADJACENT TO MULTI-STORY SPACES
- Security, Privacy and Personal Space
- INCLUSIVE RESTROOM DESIGNS
- Dignity and Self Esteem
- EQUITABLE ACCESSIBILITY



Learning Studio

Hope, Dignity, and Self-Esteem
CAREFUL AND WELL DESIGNED STORAGE

Safety, Security and Privacy
SPACE OF REFUGE IN CLASSROOMS

Peace of Mind
SEATING INTEGRATED INTO WINDOWS

Safety, Security and Privacy
SPACE OF REFUGE IN CLASSROOMS

Empowerment and Personal Control
OPERABLE WINDOWS

Hope, Dignity, and Self-Esteem
CAREFUL AND WELL DESIGNED STORAGE

Joy, Beauty and Meaning
COOL COLOR PALETTE SCHEMES

Empowerment and Personal Control
SPACE FOR GROWING PLANTS / GREENHOUSES

Connection and Community
TAILORED COMMUNITY SPACES

Peace of Mind
SOFT FORMS

Empowerment and Personal Control
PINUP SPACE FOR PERSONALIZATION

Peace of Mind
INTERIOR LIGHTING FOR CIRCADIAN RHYTHMS

- Dignity & Self-Esteem
- Sense of Community
- Beauty & Meaning
- Stress Management
- Empowerment & Personal Control
- Safety, Privacy & Personal Space

Cunningham