



# Collin College

2017 Capital Improvement Program  
Monthly Report  
January 2019

Collin County Community College District

Project Reference: 60541060  
Project Number: 60541060

February 07, 2019

### Quality information

Prepared by



Nick Fiehler  
Program Controls Manager

Checked by



Nuria Cortes  
Documents Control Manager

Approved By



Adrian Grimes  
Program Director

### Revision History

Revision	Revision date	Details	Authorized	Name	Position
First Publication	February 7, 2019	January '19 Report	Yes	Adrian Grimes	Program Director

### Distribution List

# Hard Copies	PDF Required	Association / Company Name
	1	Ken Lynn / Collin College
	1	Bill King / Collin College

**Prepared for:**

Collin County Community College District  
3452 Spur 399  
Suite 327  
McKinney, TX 75069

**Prepared by:**

Nick Fiehler  
Program Controls Manager  
E: [nfiehler.aecom@collin.edu](mailto:nfiehler.aecom@collin.edu)

AECOM  
13355 Noel Road  
4<sup>th</sup> Floor  
Dallas TX, 75240  
[aecom.com](http://aecom.com)

Copyright © 2018 by AECOM

All rights reserved. No part of this copyrighted work may be reproduced, distributed, or transmitted in any form or by any means without the prior written permission of AECOM.

## Table of Contents

1.	Introduction .....	5
2.	Executive Summary .....	5
3.	Scope.....	6
3.1	Phase 1 .....	6
3.2	Phase 2 .....	6
3.3	Phase 3 .....	6
3.4	Phase 4 .....	7
4.	Community.....	7
4.1	Project Teams .....	7
4.1.1	Phase 1 .....	7
4.1.2	Phase 2 .....	7
4.1.3	Phase 3 .....	8
4.1.4	Phase 4 .....	8
4.2	Current Personnel Estimate.....	9
4.3	Community Outreach.....	10
5.	Schedule.....	10
5.1	Program.....	10
5.2	Phase 1 .....	11
5.3	Phase 2 .....	12
5.4	Phase 3 .....	13
5.5	Phase 4 .....	13
6.	Budget .....	14
6.1	Program Summary.....	14
6.2	Phase 1 .....	15
6.3	Phase 2 .....	16
6.4	Phase 3 .....	17
6.5	Phase 4 .....	17
6.6	Phase A .....	18
6.7	Building Fund Reimbursement .....	19
7.	Completed Items.....	19
7.1	General Program .....	19
7.2	Procurement .....	19
7.3	Design .....	19
7.4	Pre-Construction.....	19
7.5	Construction .....	19
7.6	Acceptance and Close-Out.....	20
8.	Pending Items.....	20
8.1	General Program .....	20
8.2	Procurement.....	20
8.3	Design .....	20
8.4	Pre-Construction.....	20
8.5	Construction .....	20
8.6	Acceptance and Close-Out.....	20
	Appendix A – Construction Progress Photos.....	21

## 1. Introduction

On May 6, 2017, voters approved Collin College's \$600 million bond proposal to facilitate a long-range plan to accommodate the projected population growth in Collin County over the next two decades. The program consists of 4 new campuses, 3 new facilities, 2 repurposed existing spaces, and 3 wayfinding projects (on existing sites). The program is scheduled to be completed in 4 phases over 7 years with projects opening in 2020.

On May 16, 2017, in a special session, the Board of Trustees granted the District President authority to enter and negotiate into contract with AECOM Technical Services, Inc. (AECOM) to provide Program Management Services to the Collin College 2017 Capital Improvement Program. On May 25, 2017, Collin College issued a Notice to Proceed to AECOM. As part of these services, AECOM will deliver a monthly report to provide status and progress of key aspects of the Program.

## 2. Executive Summary

The Program is progressing as planned with no major issues to report at this time.

### Completed and Pending Items

- Schematic Design phase was completed for the Celina Campus and Farmersville Campus
- Schematic Design is on-going for the IT Center of Excellence at the Frisco Campus
- City of Wylie issued final building permits for the Wylie Campus
- Site work, underground utility, building foundation, building slab and garage foundation installations at the Technical Campus are on-going
- Site work, underground utility, building foundation, building slab installation, and steel erection at the Wylie Campus are on-going

### Items of close attention

- Due to numerous rain events that have occurred early in the construction phases of the Wylie Campus and Technical Campus, construction schedules are being closely monitored to ensure completion of the projects by Fall 2020

### Budget Summary

- \$351,675,673 of the \$600,000,000 has been committed to-date in the form of contracts with various vendors. This represents 58.61% of the overall program budget committed.
- \$106,863,963 of the \$351,675,673 committed amount has been expended to-date. This represents 30.39% of the commitments expended and 17.81% of the program budget expended.

### 3. Scope

#### 3.1 Phase 1

- Wylie Campus
  - Construction of a campus on a new approximately 97-acre site
  - The campus is planned to include:
    - Campus Commons
    - Learning Resource Center / Library
    - Student Center
- Technical Campus
  - Construction of a Technical Campus on a new 32-acre site in Allen, Texas
  - Programs planned for inclusion include:
    - Advanced Manufacturing, Automotive, Construction, and Health Science

#### 3.2 Phase 2

- Celina Campus
  - Construction of a campus on a new approximately 75-acre site
  - The campus is planned to include:
    - Student Union / Workforce / Instructional Building
- Farmersville Campus
  - Construction of a campus on a new approximately 76-acre site
  - The campus is planned to include:
    - Student Union / Workforce / Instructional Building
- Frisco Campus
  - Construction of a new facility on an existing campus
  - The campus is planned to include:
    - IT Center of Excellence

#### 3.3 Phase 3

- Frisco Campus
  - Construction of a new facility on an existing campus
  - The campus is planned to include:
    - Welcome Center
- McKinney Campus
  - Construction of a new facility on an existing campus
  - The campus is planned to include:

- Welcome Center

### 3.4 Phase 4

- Frisco Campus
  - Renovations / Repurposing of Existing Buildings
  - Traffic Infrastructure & Wayfinding
- McKinney Campus
  - Renovations / Repurposing of Existing Buildings
  - Wayfinding
- Plano Campus
  - Wayfinding

## 4. Community

### 4.1 Project Teams

#### 4.1.1 Phase 1

- Wylie Campus
  - Program Manager: AECOM Technical Services, Inc. (under contract)
  - A/E: Page Southerland Page, Inc. (under contract)
    - MEP: Reed, Wells, Benson & Co.
    - Civil Engineer: Pacheco Koch Consulting Engineers, Inc.
    - Cost Consulting: Vermeulens
  - Construction Manager-at-Risk: Skanska USA Building, Inc. (under contract)
  - Commissioning Agent: Bath Group, Inc. (under contract)
- Technical Campus
  - Program Manager: AECOM Technical Services, Inc. (under contract)
  - A/E: Perkins+Will, Inc. (under contract)
    - Associate Architect: Hoefer Wysocki Architecture
    - MEP: Purdy McGuire
    - Civil Engineer: Pacheco Koch Consulting Engineers, Inc.
    - Structural Engineer: L.A. Fuess Partners, Inc.
    - Cost Consulting: Vermeulens
  - Construction Manager-at-Risk: McCarthy Building Companies, Inc. (under contract)
  - Commissioning Agent: Farnsworth (under contract)

#### 4.1.2 Phase 2

- Celina Campus

- Program Manager: AECOM (under contract)
- A/E: Beck Architecture, LLC (under contract)
  - Structural Engineer: L.A. Fuess Partners, Inc.
  - MEP: Reed, Wells, Benson & Co.
  - Civil Engineer: RLK Engineering
- Construction Manager-at-Risk: JT Vaughn Construction (under contract)
- Farmersville Campus
  - Program Manager: AECOM (under contract)
  - A/E: Beck Architecture, LLC (under contract)
    - Structural Engineer: L.A. Fuess Partners, Inc.
    - MEP: Reed, Wells, Benson & Co.
    - Civil Engineer: RLK Engineering
  - Construction Manager-at-Risk: JT Vaughn Construction (under contract)
- Frisco Campus (IT Center of Excellence)
  - Program Manager: AECOM (under contract)
  - A/E: Perkins+Will, Inc. (under contract)
    - Associate Architect: Hoefer Wysocki Architecture
    - MEP: Purdy McGuire
    - Civil Engineer: Pacheco Koch Consulting Engineers, Inc.
  - Construction Manager-at-Risk: JE Dunn Construction (under contract)

#### 4.1.3 Phase 3

- Frisco Campus (Welcome Center)
  - Program Manager: (AECOM option expiration date: August 2019)
  - A/E: TBD
  - Construction Manager-at-Risk: TBD
- McKinney Campus (Welcome Center)
  - Program Manager: (AECOM option expiration date: August 2019)
  - A/E: TBD
  - Construction Manager-at-Risk: TBD

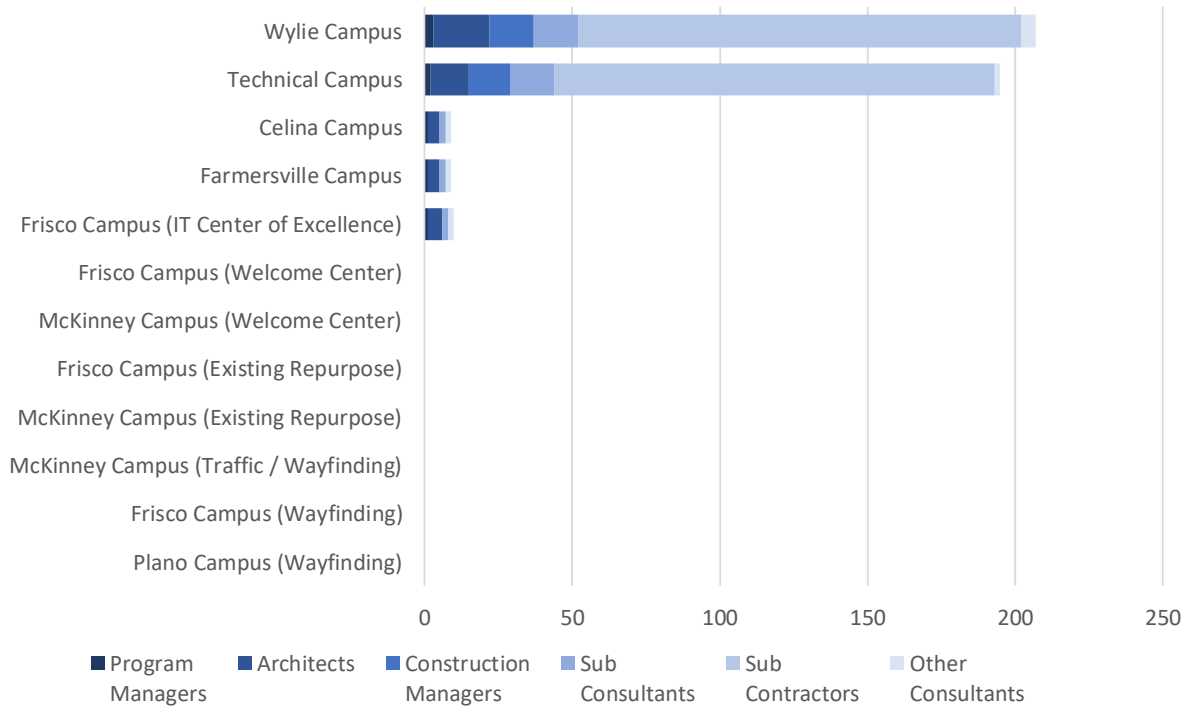
#### 4.1.4 Phase 4

- Frisco Campus (Existing Repurpose)
  - Program Manager: (AECOM option expiration date: May 2021)
  - A/E: TBD
  - Construction Manager-at-Risk: TBD
- McKinney Campus (Existing Repurpose)



- Program Manager: (AECOM option expiration date: May 2021)
- A/E: TBD
- Construction Manager-at-Risk: TBD
- McKinney Campus (Traffic / Wayfinding)
  - Program Manager: (AECOM option expiration date: May 2021)
  - A/E: TBD
  - Construction Manager-at-Risk: TBD
- Frisco Campus (Wayfinding)
  - Program Manager: (AECOM option expiration date: May 2021)
  - A/E: TBD
  - Construction Manager-at-Risk: TBD
- Plano Campus (Wayfinding)
  - Program Manager: (AECOM option expiration date: May 2021)
  - A/E: TBD
  - Construction Manager-at-Risk: TBD

## 4.2 Current Personnel Estimate



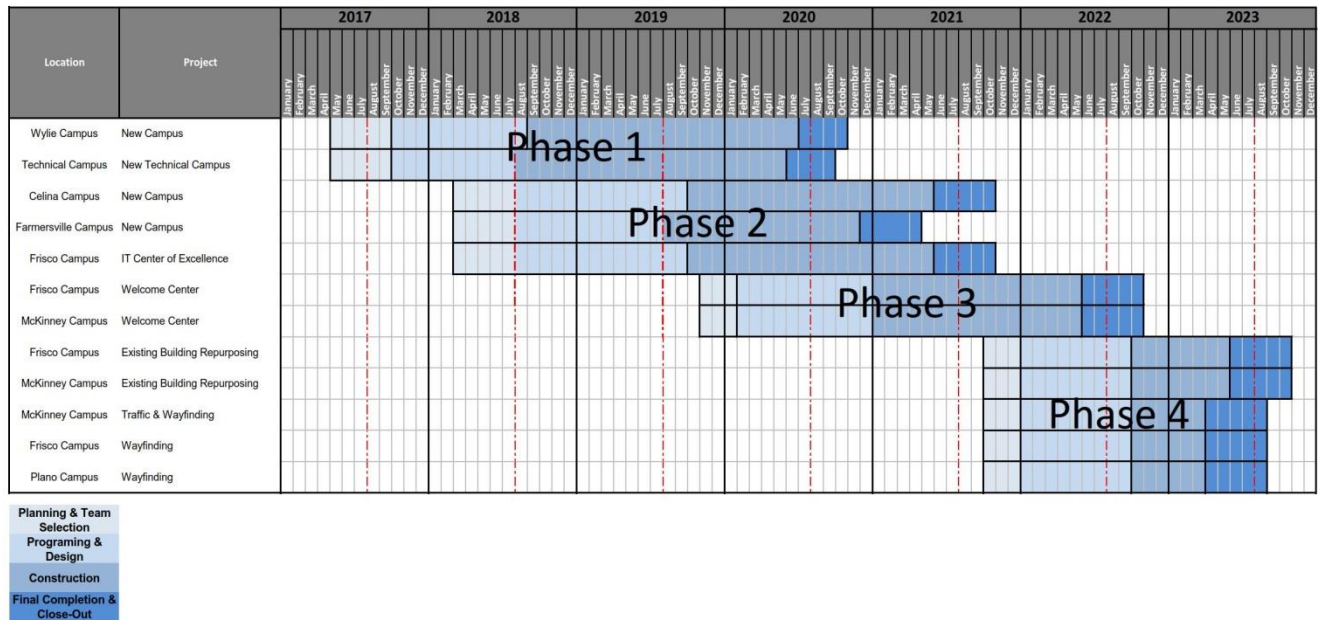
It is estimated that the Program Managers, Architects, Construction Managers, Sub-Consultants, and Sub-Contractors, under contract with Collin College for the 2017 Capital Improvement Program, have 430 employees contributing to the program's progress.

### 4.3 Community Outreach

- Collin College 2017 Capital Improvement Program Website
  - o <https://CollinCollege2017CIP.com>
  - o Includes the following features:
    - Program Overview
    - Project Scopes
    - Project Schedules
    - Project Budgets
    - Progress Photos/Renderings
    - Live On-Site Camera Feeds

## 5. Schedule

### 5.1 Program



## 5.2 Phase 1

### Wylie Campus

Activity	Baseline Finish	Planned Finish		Actual Finish	
BOT Approval of Program Manager	May 16, 2017	May 16, 2017	↑	May 16, 2017	✓
BOT Approval of A/E Procurement Method	May 23, 2017	May 23, 2017	↑	May 23, 2017	✓
BOT Approval of Construction Delivery Method	May 23, 2017	May 23, 2017	↑	May 23, 2017	✓
BOT Approval of Recommended Firms	August 22, 2017	August 22, 2017	↑	August 22, 2017	✓
Architect Mobilized	September 12, 2017	September 29, 2017	↓	September 28, 2017	✓
GMP Construction Documents Submittal	June 26, 2018	June 26, 2018	↑	June 26, 2018	✓
BOT Approval of GMP	August 28, 2018	August 28, 2018	↑	August 28, 2018	✓
Contractor Mobilized	September 10, 2018	September 12, 2018	👉	September 12, 2018	✓
Foundations Complete	May 18, 2019	May 18, 2019	↑	-	
Structures Complete	June 28, 2019	June 28, 2019	↑	-	
Dry-In of Buildings Complete	October 26, 2019	October 26, 2019	↑	-	
Permanent Power Complete	September 17, 2019	September 17, 2019	↑	-	
Interior Finish-Out Complete	May 1, 2020	May 1, 2020	↑	-	
Substantial Completion	June 25, 2020	June 25, 2020	↑	-	
Final Completion	August 23, 2020	August 23, 2020	↑	-	
Student Occupancy	August 2020	August 2020	↑	-	

### Technical Campus

Activity	Baseline Finish	Planned Finish		Actual Finish	
BOT Approval of Program Manager	May 16, 2017	May 16, 2017	↑	May 16, 2017	✓
BOT Approval of A/E Procurement Method	May 23, 2017	May 23, 2017	↑	May 23, 2017	✓
BOT Approval of Construction Delivery Method	May 23, 2017	May 23, 2017	↑	May 23, 2017	✓
BOT Approval of Recommended Firms	August 22, 2017	August 22, 2017	↑	August 22, 2017	✓
Architect Mobilized	September 12, 2017	September 29, 2017	↓	September 28, 2017	✓
GMP Construction Documents Submittal	April 16, 2018	April 16, 2018	↑	April 19, 2018	✓
BOT Approval of GMP	June 26, 2018	June 26, 2018	↑	June 26, 2018	✓
Contractor Mobilized	July 6, 2018	July 20, 2018	👉	July 26, 2018	✓
Foundations Complete	September 23, 2019	September 23, 2019	↑	-	
Structures Complete	November 18, 2019	November 18, 2019	↑	-	
Dry-In of Buildings Complete	December 20, 2019	December 20, 2019	↑	-	
Permanent Power Complete	TBD	TBD		-	
Interior Finish-Out Complete	May 8, 2020	May 8, 2020	↑	-	
Substantial Completion	June 11, 2020	June 11, 2020	↑	-	
Final Completion	July 7, 2020	July 7, 2020	↑	-	
Student Occupancy	August 2020	August 2020	↑	-	

## 5.3 Phase 2

### Celina Campus

Activity	Baseline Finish	Planned Finish		Actual Finish	
BOT Approval of Program Manager	September 25, 2018	February 14, 2018	↑	February 14, 2018	✓
BOT Approval of A/E Procurement Method	September 25, 2018	March 27, 2018	↑	March 27, 2018	✓
BOT Approval of Construction Delivery Method	September 25, 2018	March 27, 2018	↑	March 27, 2018	✓
BOT Approval of Recommended A/E Firm	June 26, 2018	June 26, 2018	↑	June 26, 2018	✓
BOT Approval of Recommended CM Firm	August 2018	August 2018	↑	August 28, 2018	✓
Architect Mobilized	July 24, 2018	July 24, 2018	↑	July 31, 2018	✓
Schematic Design Submittal	January 8, 2019	January 15, 2019	👉	January 16, 2019	✓
Design Development Submittal	April 30, 2019	April 30, 2019	↑	-	
Construction Document Submittal	September 20, 2019	September 20, 2019	↑	-	
Contractor Mobilized	December 2019	December 2019	↑	-	
Student Occupancy	August 2021	August 2021	↑	-	

### Farmersville Campus

Activity	Baseline Finish	Planned Finish		Actual Finish	
BOT Approval of Program Manager	September 25, 2018	February 14, 2018	↑	February 14, 2018	✓
BOT Approval of A/E Procurement Method	September 25, 2018	March 27, 2018	↑	March 27, 2018	✓
BOT Approval of Construction Delivery Method	September 25, 2018	March 27, 2018	↑	March 27, 2018	✓
BOT Approval of Recommended A/E Firm	June 26, 2018	June 26, 2018	↑	June 26, 2018	✓
BOT Approval of Recommended CM Firm	August 2018	August 2018	↑	August 28, 2018	✓
Architect Mobilized	July 24, 2018	July 24, 2018	↑	July 31, 2018	✓
Schematic Design Submittal	December 20, 2018	December 18, 2018	↑	December 18, 2018	✓
Design Development Submittal	April 2, 2019	April 2, 2019	↑	-	
Construction Document Submittal	July 25, 2019	July 25, 2019	↑	-	
Contractor Mobilized	October 2019	October 2019	↑	-	
Student Occupancy	August 2021	August 2021	↑	-	

### Frisco Campus (IT Center of Excellence)

Activity	Baseline Finish	Planned Finish		Actual Finish	
BOT Approval of Program Manager	September 25, 2018	February 14, 2018	↑	February 14, 2018	✓
BOT Approval of A/E Procurement Method	September 25, 2018	March 27, 2018	↑	March 27, 2018	✓
BOT Approval of Construction Delivery Method	September 25, 2018	March 27, 2018	↑	March 27, 2018	✓
BOT Approval of Recommended A/E Firm	June 26, 2018	June 26, 2018	↑	June 26, 2018	✓
BOT Approval of Recommended CM Firm	August 2018	August 2018	↑	August 28, 2018	✓
Architect Mobilized	July 24, 2018	July 24, 2018	↑	July 31, 2018	✓
Schematic Design Submittal	TBD	TBD		-	
Design Development Submittal	TBD	TBD		-	
Construction Document Submittal	TBD	TBD		-	
Contractor Mobilized	January 2019	January 2019	↑	-	
Student Occupancy	August 2021	August 2021	↑	-	

## 5.4 Phase 3

### Frisco Campus (Welcome Center)

Activity	Baseline Finish	Planned Finish		Actual Finish
BOT Approval of Program Manager	November 2019	November 2019	↑	-
BOT Approval of A/E Procurement Method	November 2019	November 2019	↑	-
BOT Approval of Construction Delivery Method	November 2019	November 2019	↑	-
Student Occupancy	August 2022	August 2022	↑	-

### McKinney Campus (Welcome Center)

Activity	Baseline Finish	Planned Finish		Actual Finish
BOT Approval of Program Manager	November 2019	November 2019	↑	-
BOT Approval of A/E Procurement Method	November 2019	November 2019	↑	-
BOT Approval of Construction Delivery Method	November 2019	November 2019	↑	-
Student Occupancy	August 2022	August 2022	↑	-

## 5.5 Phase 4

### Frisco Campus (Existing Repurpose)

Activity	Baseline Finish	Planned Finish		Actual Finish
BOT Approval of Program Manager	October 2021	October 2021	↑	-
BOT Approval of A/E Procurement Method	October 2021	October 2021	↑	-
BOT Approval of Construction Delivery Method	October 2021	October 2021	↑	-
Student Occupancy	August 2023	August 2023	↑	-

### McKinney Campus (Existing Repurpose)

Activity	Baseline Finish	Planned Finish		Actual Finish
BOT Approval of Program Manager	October 2021	October 2021	↑	-
BOT Approval of A/E Procurement Method	October 2021	October 2021	↑	-
BOT Approval of Construction Delivery Method	October 2021	October 2021	↑	-
Student Occupancy	August 2023	August 2023	↑	-

### McKinney Campus (Traffic / Wayfinding)

Activity	Baseline Finish	Planned Finish		Actual Finish
BOT Approval of Program Manager	October 2021	October 2021	↑	-
BOT Approval of A/E Procurement Method	October 2021	October 2021	↑	-
BOT Approval of Construction Delivery Method	October 2021	October 2021	↑	-
Student and Staff Use	August 2023	August 2023	↑	-

**Frisco Campus (Wayfinding)**

Activity	Baseline Finish	Planned Finish		Actual Finish
BOT Approval of Program Manager	October 2021	October 2021	↑	-
BOT Approval of A/E Procurement Method	October 2021	October 2021	↑	-
BOT Approval of Construction Delivery Method	October 2021	October 2021	↑	-
Student and Staff Use	August 2023	August 2023	↑	-

**Plano Campus (Wayfinding)**

Activity	Baseline Finish	Planned Finish		Actual Finish
BOT Approval of Program Manager	October 2021	October 2021	↑	-
BOT Approval of A/E Procurement Method	October 2021	October 2021	↑	-
BOT Approval of Construction Delivery Method	October 2021	October 2021	↑	-
Student and Staff Use	August 2023	August 2023	↑	-

## 6. Budget

### 6.1 Program Summary

**Program Wide Budget**

Budget Group	Original Budget	Current Budget	Commitments	Expenditures	% of Budget Committed	% of Commitment Expended
Management, Design, & Pre-Construction	\$54,010,598	\$50,028,317	\$37,054,716	\$20,310,727	74%	55%
Investigation, Testing & Verification	\$9,330,450	\$8,851,458	\$1,676,511	\$687,830	19%	41%
Construction, Equipment & Furnishings	\$514,928,252	\$528,402,166	\$325,254,211	\$85,775,172	62%	26%
Misc.	\$439,079	\$512,800	\$90,234	\$90,234	18%	100%
Contingency	\$21,291,621	\$12,205,349	\$0	\$0	0%	0%
<b>Total Program Budget</b>	<b>\$600,000,000</b>	<b>\$600,000,090</b>	<b>\$351,675,673</b>	<b>\$106,863,963</b>		
<b>% of Total Program Budget Committed</b>	<b>58.61%</b>					
<b>% of Total Commitments Expended</b>	<b>30.39%</b>					
<b>% of Total Program Budget Expended</b>	<b>17.81%</b>					

## 6.2 Phase 1

## Wylie Campus

Budget Group	Original Budget	Current Budget	Commitments	Expenditures	% of Budget Committed	% of Commitment Expended
Management, Design, & Pre-Construction	\$15,051,440	\$13,349,852	\$13,334,852	\$9,231,251	100%	69%
Investigation, Testing & Verification	\$2,679,247	\$2,200,255	\$877,882	\$376,663	40%	43%
Construction, Equipment & Furnishings	\$133,174,284	\$149,705,702	\$140,845,914	\$27,928,546	94%	20%
Misc.	\$126,082	\$170,769	\$54,097	\$54,097	32%	100%
Contingency	\$6,571,649	\$658,302	\$0	\$0	0%	0%
<b>Total Project Budget</b>	<b>\$157,602,702</b>	<b>\$166,084,879</b>	<b>\$155,112,745</b>	<b>\$37,590,557</b>		
% of Total Project Budget Committed	<b>93.39%</b>					
% of Total Commitments Expended	<b>24.23%</b>					
% of Total Project Budget Expended	<b>22.63%</b>					

## Technical Campus

Budget Group	Original Budget	Current Budget	Commitments	Expenditures	% of Budget Committed	% of Commitment Expended
Management, Design, & Pre-Construction	\$14,713,206	\$13,363,255	\$13,266,199	\$9,303,782	99%	70%
Investigation, Testing & Verification	\$2,619,039	\$2,619,039	\$709,380	\$267,272	27%	38%
* Construction, Equipment & Furnishings	\$130,181,602	\$159,976,076	\$153,340,275	\$26,778,605	96%	17%
Misc.	\$123,249	\$142,545	\$23,317	\$23,317	16%	100%
Contingency	\$6,423,972	\$1,021,892	\$0	\$0	0%	0%
Allen ISD Reimbursement	-	(\$12,000,000)	(\$12,000,000)	-		
Allen EDC Grant	-	(\$400,000)	(\$400,000)	-		
<b>Total Project Budget</b>	<b>\$154,061,068</b>	<b>\$164,722,807</b>	<b>\$154,939,172</b>	<b>\$36,372,975</b>		
% of Total Project Budget Committed	<b>94.06%</b>					
% of Total Commitments Expended	<b>23.48%</b>					
% of Total Project Budget Expended	<b>22.08%</b>					

\* Actual Budget from bond funds is \$147,576,076 (\$159,976,076 less \$12,000,000 Allen ISD Reimbursement and \$400,000 Allen EDC Grant)

## 6.3 Phase 2

### Celina Campus

Budget Group	Original Budget	Current Budget	Commitments	Expenditures	% of Budget Committed	% of Commitment Expended
Management, Design, & Pre-Construction	\$5,078,807	\$4,345,757	\$3,861,135	\$756,644	89%	20%
Investigation, Testing & Verification	\$936,908	\$936,908	\$34,990	\$15,000	4%	43%
Construction, Equipment & Furnishings	\$46,569,862	\$46,569,862	\$0	\$0	0%	0%
Misc.	\$44,090	\$50,712	\$7,743	\$7,743	15%	100%
Contingency	\$2,482,596	\$3,209,025	\$0	\$0	0%	0%
<b>Total Project Budget</b>	<b>\$55,112,263</b>	<b>\$55,112,263</b>	<b>\$3,903,868</b>	<b>\$779,387</b>		
% of Total Project Budget Committed	<b>7.08%</b>					
% of Total Commitments Expended	<b>19.96%</b>					
% of Total Project Budget Expended	<b>1.41%</b>					

### Farmersville Campus

Budget Group	Original Budget	Current Budget	Commitments	Expenditures	% of Budget Committed	% of Commitment Expended
Management, Design, & Pre-Construction	\$2,539,404	\$2,374,841	\$2,132,530	\$447,493	90%	21%
Investigation, Testing & Verification	\$468,453	\$468,453	\$38,490	\$14,100	8%	37%
Construction, Equipment & Furnishings	\$23,284,932	\$23,284,932	\$0	\$0	0%	0%
Misc.	\$22,045	\$23,560	\$2,755	\$2,755	12%	100%
Contingency	\$1,241,298	\$1,404,347	\$0	\$0	0%	0%
<b>Total Project Budget</b>	<b>\$27,556,132</b>	<b>\$27,556,132</b>	<b>\$2,173,775</b>	<b>\$464,348</b>		
% of Total Project Budget Committed	<b>7.89%</b>					
% of Total Commitments Expended	<b>21.36%</b>					
% of Total Project Budget Expended	<b>1.69%</b>					

### Frisco Campus (IT Center of Excellence)

Budget Group	Original Budget	Current Budget	Commitments	Expenditures	% of Budget Committed	% of Commitment Expended
Management, Design, & Pre-Construction	\$5,472,853	\$4,131,572	\$4,090,000	\$275,557	99%	7%
Investigation, Testing & Verification	\$1,009,600	\$1,009,600	\$15,770	\$14,795	2%	94%
Construction, Equipment & Furnishings	\$50,183,042	\$50,183,042	\$0	\$0	0%	0%
Misc.	\$47,510	\$49,113	\$2,322	\$2,322	5%	100%
Contingency	\$2,675,210	\$4,014,889	\$0	\$0	0%	0%
<b>Total Project Budget</b>	<b>\$59,388,215</b>	<b>\$59,388,215</b>	<b>\$4,108,092</b>	<b>\$292,674</b>		
% of Total Project Budget Committed	<b>6.92%</b>					
% of Total Commitments Expended	<b>7.12%</b>					
% of Total Project Budget Expended	<b>0.49%</b>					



## 6.4 Phase 3

### Frisco Campus (Welcome Center)

Budget Group	Original Budget	Current Budget	Commitments	Expenditures	% of Budget Committed	% of Commitment Expended
<b>Total Project Budget</b>	<b>\$26,329,788</b>	<b>\$26,329,788</b>	<b>\$0</b>	<b>\$0</b>		
% of Total Project Budget Committed	0.00%					
% of Total Commitments Expended	0.00%					
% of Total Project Budget Expended	0.00%					

### McKinney Campus (Welcome Center)

Budget Group	Original Budget	Current Budget	Commitments	Expenditures	% of Budget Committed	% of Commitment Expended
<b>Total Project Budget</b>	<b>\$36,861,704</b>	<b>\$36,861,704</b>	<b>\$0</b>	<b>\$0</b>		
% of Total Project Budget Committed	0.00%					
% of Total Commitments Expended	0.00%					
% of Total Project Budget Expended	0.00%					

## 6.5 Phase 4

### Frisco Campus (Existing Repurpose)

Budget Group	Original Budget	Current Budget	Commitments	Expenditures	% of Budget Committed	% of Commitment Expended
<b>Total Project Budget</b>	<b>\$7,321,091</b>	<b>\$7,321,091</b>	<b>\$0</b>	<b>\$0</b>		
% of Total Project Budget Committed	0.00%					
% of Total Commitments Expended	0.00%					
% of Total Project Budget Expended	0.00%					

### McKinney Campus (Existing Repurpose)

Budget Group	Original Budget	Current Budget	Commitments	Expenditures	% of Budget Committed	% of Commitment Expended
<b>Total Project Budget</b>	<b>\$9,151,364</b>	<b>\$9,151,364</b>	<b>\$0</b>	<b>\$0</b>		
% of Total Project Budget Committed	0.00%					
% of Total Commitments Expended	0.00%					
% of Total Project Budget Expended	0.00%					

**McKinney Campus (Traffic / Wayfinding)**

Budget Group	Original Budget	Current Budget	Commitments	Expenditures	% of Budget Committed	% of Commitment Expended
<b>Total Project Budget</b>	<b>\$7,826,795</b>	<b>\$7,826,795</b>	<b>\$370,000</b>	<b>\$296,000</b>		
% of Total Project Budget Committed	4.73%					
% of Total Commitments Expended	80.00%					
% of Total Project Budget Expended	3.78%					

**Frisco Campus (Wayfinding)**

Budget Group	Original Budget	Current Budget	Commitments	Expenditures	% of Budget Committed	% of Commitment Expended
<b>Total Project Budget</b>	<b>\$2,546,293</b>	<b>\$2,546,293</b>	<b>\$0</b>	<b>\$0</b>		
% of Total Project Budget Committed	0.00%					
% of Total Commitments Expended	0.00%					
% of Total Project Budget Expended	0.00%					

**Plano Campus (Wayfinding)**

Budget Group	Original Budget	Current Budget	Commitments	Expenditures	% of Budget Committed	% of Commitment Expended
<b>Total Project Budget</b>	<b>\$5,092,585</b>	<b>\$5,092,585</b>	<b>\$0</b>	<b>\$0</b>		
% of Total Project Budget Committed	0.00%					
% of Total Commitments Expended	0.00%					
% of Total Project Budget Expended	0.00%					

6.6 Phase A

**Public Safety Training Center**

Budget Group	Current Budget	Commitments	Expenditures	% of Budget Committed	% of Commitment Expended
<b>Construction Costs</b>	<b>\$31,068,022</b>	<b>\$31,068,022</b>	<b>\$31,068,022</b>	<b>100%</b>	<b>100%</b>
<b>Total Project Budget</b>	<b>\$31,068,022</b>	<b>\$31,068,022</b>	<b>\$31,068,022</b>		

## 6.7 Building Fund Reimbursement

### Program Level

Budget Group	Original Budget	Current Budget	Commitments	Expenditures	% of Budget Committed	% of Commitment Expended
Building Fund Reimbursement	\$51,150,000	\$0	\$0	\$0	0%	0%
Program Contingency	\$0	\$938,152	\$0	\$0	0%	0%
<b>Total Project Budget</b>	<b>\$51,150,000</b>	<b>\$938,152</b>	<b>\$0</b>	<b>\$0</b>		

\* Building Fund Reimbursements for Wylie Campus land, Technical Campus land, and Public Safety Training Center construction costs were completed in August '18. Budgets, Commitments and Expenditures for these costs are reflected in each project.

## 7. Completed Items

### 7.1 General Program

- AECOM issued the Monthly Program Report for December '18 to Collin College on January 7<sup>th</sup>
- AECOM conducted coordination meetings with the Executive Committee on January 7<sup>th</sup> and 14<sup>th</sup>
- AECOM presented a Program update to the Facilities and Construction Committee on January 15<sup>th</sup>

### 7.2 Procurement

- Collin College and AECOM conducted a Program Procurement Update Meeting on January 9<sup>th</sup>
- RFQ 4169 (CM Services) debriefing was conducted with CORE on January 10<sup>th</sup>
- Collin College issued a PO to Kimley-Horn for the Celina Campus Traffic Impact Analysis on January 28<sup>th</sup>

### 7.3 Design

- Beck Architecture, LLC conducted a Schematic Design review session with Collin College, AECOM and JT Vaughn Construction for the Celina Campus on January 15<sup>th</sup>
- Perkins+Will, Inc. conducted a Schematic Design review session with Collin College and AECOM for the IT Center of Excellence on January 16<sup>th</sup>

### 7.4 Pre-Construction

- Collin College, AECOM, JT Vaughn Construction, and Beck Architecture, LLC met to review the Schematic Design estimate for the Farmersville Campus on January 16<sup>th</sup>

### 7.5 Construction

- Collin College, AECOM, Perkins+Will, Inc. and McCarthy Building Companies, Inc. conducted Weekly OAC meetings on January 2<sup>nd</sup>, 9<sup>th</sup>, 16<sup>th</sup>, 23<sup>rd</sup>, and 30<sup>th</sup> for the Technical Campus
- Collin College, AECOM, Page Southerland Page, Inc. and Skanska USA Building, Inc. conducted Weekly OAC meetings on January 3<sup>rd</sup>, 10<sup>th</sup>, 17<sup>th</sup>, 24<sup>th</sup>, and 31<sup>st</sup> for the Wylie Campus
- City of Wylie issued the building permit for the Wylie Campus on January 8<sup>th</sup>
- McCarthy Building Companies, Inc. and AECOM met on January 15<sup>th</sup> to review the project buyout for the Technical Campus

- Collin College and AECOM met on January 18<sup>th</sup> to review room numbering for the Wylie Campus
- McCarthy Building Companies, Inc. held a Site Specific Safety Orientation for Collin College, AECOM, and Perkins+Will, Inc. for the Technical Campus on January 30th

See Appendix A for Construction Progress Photos

## 7.6 Acceptance and Close-Out

- No Acceptance and Close-Out Phase Items have been completed at this time

## 8. Pending Items

### 8.1 General Program

- No General Program items are pending at this time

### 8.2 Procurement

- Wylie Campus and Technical Campus construction phase commissioning services
- Wylie Campus and Technical Campus construction phase building envelope services

### 8.3 Design

- Design Development is on-going for the Celina Campus and Farmersville Campus
- Schematic Design is on-going for the IT Center of Excellence

### 8.4 Pre-Construction

- Coordination with the City of Celina and City of Farmersville for the permitting/zoning requirements for the Celina Campus and Farmersville Campus

### 8.5 Construction

- Site work, underground utility, building foundation, building slab and garage foundation installations at the Technical Campus are on-going
- Site work, underground utility, building foundation, steel erection, and building slab installations at the Wylie Campus are on-going

See Appendix A for Construction Progress Photos

### 8.6 Acceptance and Close-Out

- No Acceptance and Close-Out activities are underway at this time

# Appendix A – Construction Progress Photos

## Technical Campus





**Wylie Campus**



