



School District 622

NORTH ST. PAUL | MAPLEWOOD | OAKDALE

Ready for tomorrow

Back To School Updates

August 19, 2025

Christine Tucci Osorio
Superintendent

District 622 Org Chart 2025-2026

2025-26 District Org Chart

District 622 School Board

Executive Assistant
May Her

Superintendent Christine Tucci Osorio

Director Sara Guyette	Director Josh Anderson	Director Amylee Yang	Assistant Superintendent Tricia St. Michaels	Director Heidi Leigh	Assistant Superintendent Andy Beaton	Director Eric Mjolsness	Director Lynn Pham	Director Tamra Lennox	Director Amy Luckner
Operations	Technology & Finance	Human Resources	Elementary	Teaching & Learning	Secondary	Post-Secondary Readiness	Equity & Communications	Community Education	Research, Evaluation & Assessment (REA)
Nutrition Services	Budget / Finance	Hiring	Pre-K Early Learning	Elementary Curriculum	Athletics/Activities	Career Pathways	Strategic Plan	Adventure Connection FLIGHT EPIC Connection	State and District Assessment
Transportation	Accounting / Accounts Payable	Recruitment	Special Education	Elementary PD	Attendance	Early College Credit	Marketing/Branding	Youth Enrichment Adult Enrichment	Comprehensive Achievement & Civic Readiness
Custodial & Maintenance	Procurement	Leaves of Absence	504	Multilingual Learning (ML)	School Security/ SROs	CTE & Perkins	Public Relations	Adult Basic Education	School Improvement Planning (SIP)
Grounds & Warehouse	Elections	Employee Wellness	Mental Health	Immersion	Liasion to Police Departments	Secondary PD	Interpreters/Translations	Homeschool	School / District Accountability
Ice Arenas	Contract Negotiations	Well-at-Work Clinic	Webster & Next Step	American Indian Education	Crisis Response	Secondary Curriculum	Social Emotional Learning	Non-Publics	Data Dashboard
Planning & Construction	Tech Integration	Contract Negotiations	Health Services	American Indian Ed. Language Revitalization Grant	Targeted Services	Library/Media Centers	Advanced Academics K-8	Facility Use	Data Teams / Data-Informed Decision Making
Lease & Property Management	Information Services	Workers Compensation	Care & Treatment	MTSS & Intervention	Credit Recovery	Counselors	Achievement & Integration	Senior Program	Data Analysis and Reporting
Environmental Health & Safety	Tech Support	Benefits	Title IX	Title I, II, III, IV Programs Title I Non-public	ALC	Teacher Evaluation	Cultural Liaisons	Aquatics	Program Evaluation
Energy & Sustainability	Network Support	Labor Relations	Homeless Programs	Technology Integration	AVID	Course Development	Media Relations	Driver Education	Research
Insurance / Risk Management	Security Enrollment Center	Employee Relations Performance Management Payroll	Non-Publics (sped)	New Educator Orientation CEU's READ Act Q Comp	Promise Fellows Immersion	Credit Alignment AP/CIS/PSEO	Leadership Development Internal/External Communications	Early Childhood Family Education	

School District 622

NORTH ST. PAUL | MAPLEWOOD | OAKDALE

Ready for tomorrow

School & Program Leaders 2025-2026

Office of Early Learning
Principal - Lisa Gruenewald
ECSE Supervisor - Amber Zimmer

Carver Principal - Arthur Williams AP - Sean Cotherman AA - Leah James	Castle Principal - Bridget Bruner AA - Marita Moran-Wildenauer	Cowern Principal - Travis Barringer AA - Danielle Stener	Eagle Point Principal - Shawn Bromeland AP - Sonrisa Shaw
Justice Alan Page Principal - Kenny Newby AP - Asa Malata AA - Tia Tumbleson	Richardson Principal - Melissa Houde AA - Cassie Allen-Armstrong	Weaver Principal - Jenny Parker AA - Amere Watkins	Skyview Middle Principal - Jeff Cavett AP - Jessica Perry AP - Antwon Williams Dean - Brett Latterell
John Glenn Principal - Jill Miklausich AP - Marnie Galvin AP - Aaron Taft AA - Sai Thao	Tartan Principal - Bethany DeCent AP - Junior Eugene AP - Josh Andres AP - Sterling Brown AA - Brad Dahedl	North Principal - Kevin Wolff AP - Deron Drummond AP - Keith Reynolds AP - Laura Kvamme AA - Jonathan Friedman	622 Online K-12 Principal - Stephanie Goeken Dean - Andrea Kaltved
Next Step Transition Program Interim Supervisor - Kayla Campanelli AA - Katie Borne	Harmony K-12 Supervisor - Mollie Raab AA - Marvin Sims	Care & Treatment Programs Supervisor - Marvin Sims AA - Marvin Sims	AA = Associate Administrator AP = Assistant Principal



School District 622

NORTH ST. PAUL | MAPLEWOOD | OAKDALE

Ready for tomorrow

Staffing Update

New Teachers

# of New Educators Hired	7	13	10	6	4	7
Prior Years of Experience	0	1-3	4-6	7-9	10-12	13+

International Teachers Hired	
2025-26	9
2024-25	11

Remaining Vacancies

As of 8/15/25: There are 106 employee vacancies: (24 Teacher, 4 Educational Assistants, 49 Paraprofessional, 1 Clerical, 7 Nutrition Services, 5 Custodian, 2 Transportation, 1 BIS, 12 Non-Unit, 1 LPN)

Last year (24-25) at this time we had 98 employee vacancies:
(17 teacher, 4 Educational Assistants, 32 Paraprofessional, 4 Clerical, 4 Nutrition Services, 4 Custodian, 20 Transportation, 6 BIS, 7 Non Unit)



District 622 Calendar 2025-26

New Educator Week

August 18-21

Welcome Back Week

August 25-29



School District 622

NORTH ST. PAUL | MAPLEWOOD | OAKDALE

Ready for tomorrow

Current Student Enrollment

August 2025 Enrollment Report

Elementary	
School	Total
Beaver Lake	112
Gladstone VPK	18
Carver	869
Castle	682
Cowern	387
Eagle Point	791
Justice Page	783
Richardson	662
Weaver	436
TOTAL	4,740

Secondary	
School	Total
John Glenn	1,135
Skyview	1,075
North	1,650
Tartan	1,721
TOTAL	5,581

Other Programs	
School	Total
Gladstone/ECSE	359
622 Online	50
622 Alternative	38
Webster K-12	56
Next Step	94
TOTAL	597

School Bus Times 2025-26



My Ride K-12

New and Improved
Bus App
for Families



Bus Arrive	School Times	Bus Depart	Schools
7:10	7:30-2:00	2:07	John Glenn
7:15	7:30-2:00	2:07	Skyview
7:45	8:00-2:15	2:22	Webster K-12
7:50	8:00-2:00	2:07	Next Step
7:55	8:10-2:40	2:47	North, Tartan
8:40	8:50-3:20	3:27	Cowern, Eagle Point, Page, Weaver
9:20	9:30-4:00	4:07	Castle, Carver, Richardson
Bus Arrive	School Times	Bus Depart	PreK / ECSE / ECFE
9:25	9:30-12:00	12:07	Beaver Lake & Gladstone - AM
1:25	1:30-4:00	4:07	Beaver Lake & Gladstone - PM
Bus Arrive	School Times	Bus Depart	PreK at Elementary Sites
8:40	8:50-11:20	11:27	Cowern, Eagle Point, Page, Weaver - AM
12:45	12:50-3:20	3:27	Cowern, Eagle Point, Page, Weaver - PM
9:20	9:30-12:00	12:07	Castle, Carver, Richardson - AM
1:25	1:30-4:00	4:07	Castle, Carver, Richardson - PM

Construction Updates

Tartan Nearly Complete!

Cowern Addition

Districtwide Facilities Open House

District Education Center
Thursday, October 2, 2025
4:00-8:00



School District 622

NORTH ST. PAUL | MAPLEWOOD | OAKDALE

Ready for tomorrow

622 Vaccination Clinics

Location	Date	Time	Services Offered
North	8/20	1:00 - 4:00 p.m.	Vaccines & Physicals
Tartan	8/28	2:00 - 6:00 p.m.	Vaccines & Physicals
John Glenn	8/27	3:00 - 7:00 p.m.	Vaccines & Physicals
Skyview	8/27	3:00 - 7:00 p.m.	Vaccines & Physicals
Justice Alan Page	8/28	4:00 - 6:00 p.m.	Vaccines
Carver	8/28	4:00 - 7:00 p.m.	Vaccines



School District 622

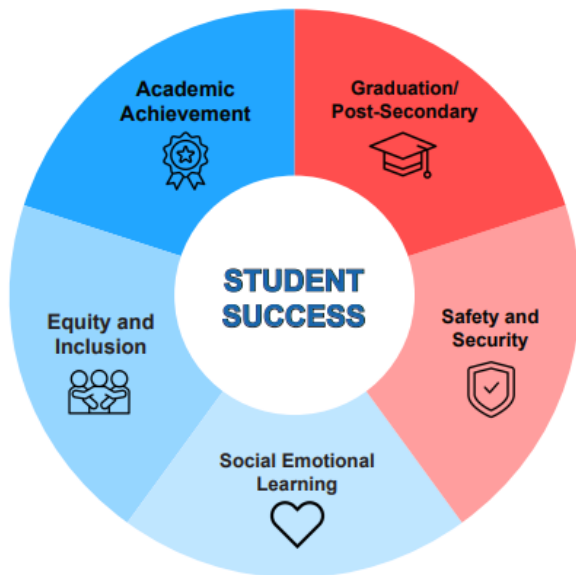
NORTH ST. PAUL | MAPLEWOOD | OAKDALE

Ready for tomorrow

District 622 Strategic Plan 2024-2029

OUR MISSION

District 622 will inspire lifelong learners who thrive in diverse communities.



GOALS

Academic Achievement

- Students will successfully meet academic standards.

Graduation/Post Secondary

- Students will graduate fully prepared for post-secondary success.

Safety & Security

- Students and staff will feel physically and emotionally safe at school.

Social Emotional Learning

- Students and staff will work and learn in a positive school culture that promotes personal well-being.

Equity and Inclusion

- Students, staff, and families will feel welcomed and included as valued members of our diverse school community.

2024 Strategic Plan Goals

Our values are the foundation of our community and guide our actions.

Inclusion • Innovation • Excellence • Growth • Collaboration • Curiosity

Questions