



ENROLLMENT PROJECTION 2020-21

Independent School District 877
Buffalo-Hanover-Montrose

November 25, 2019

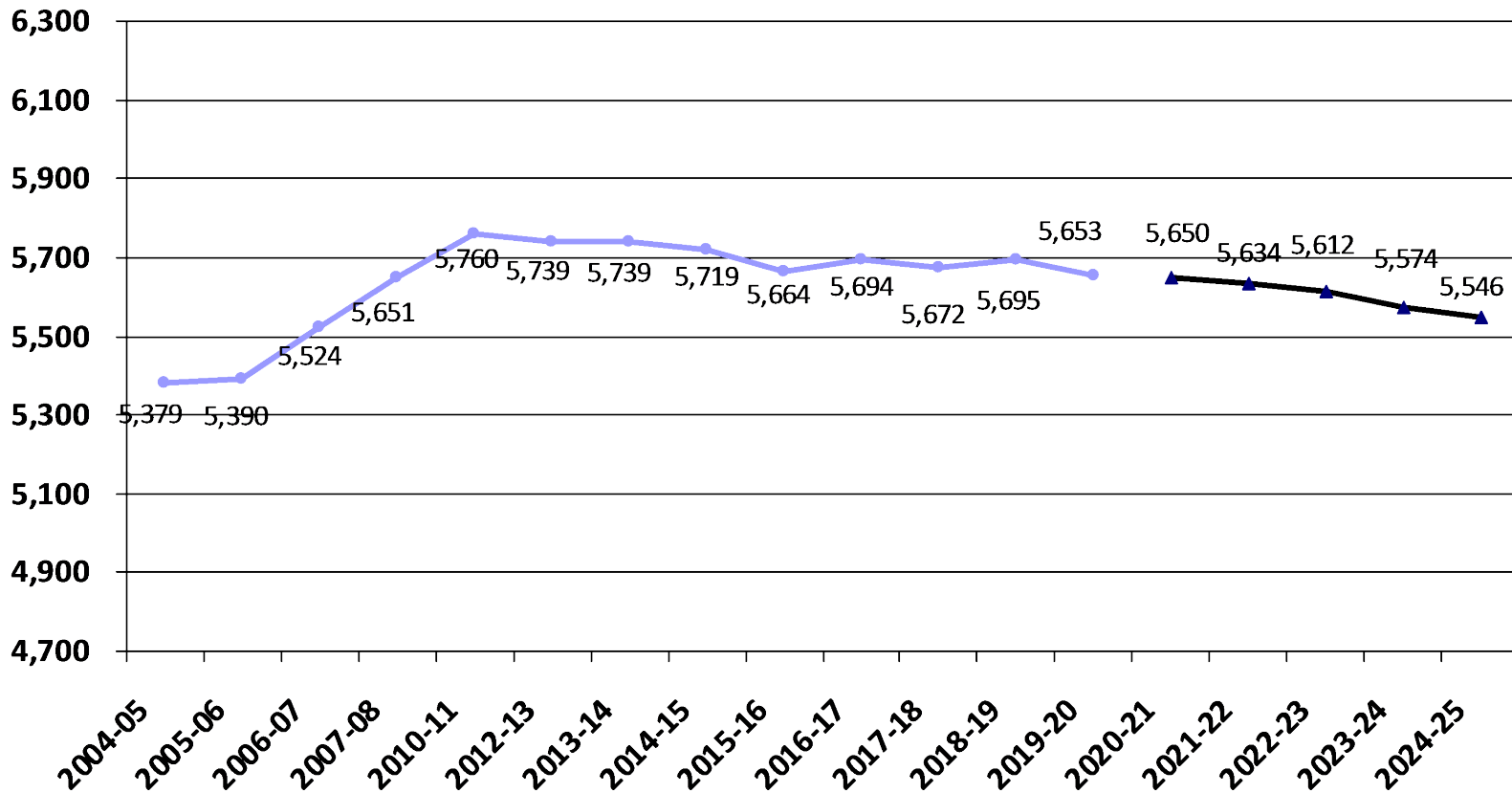


Enrollment Projection Report

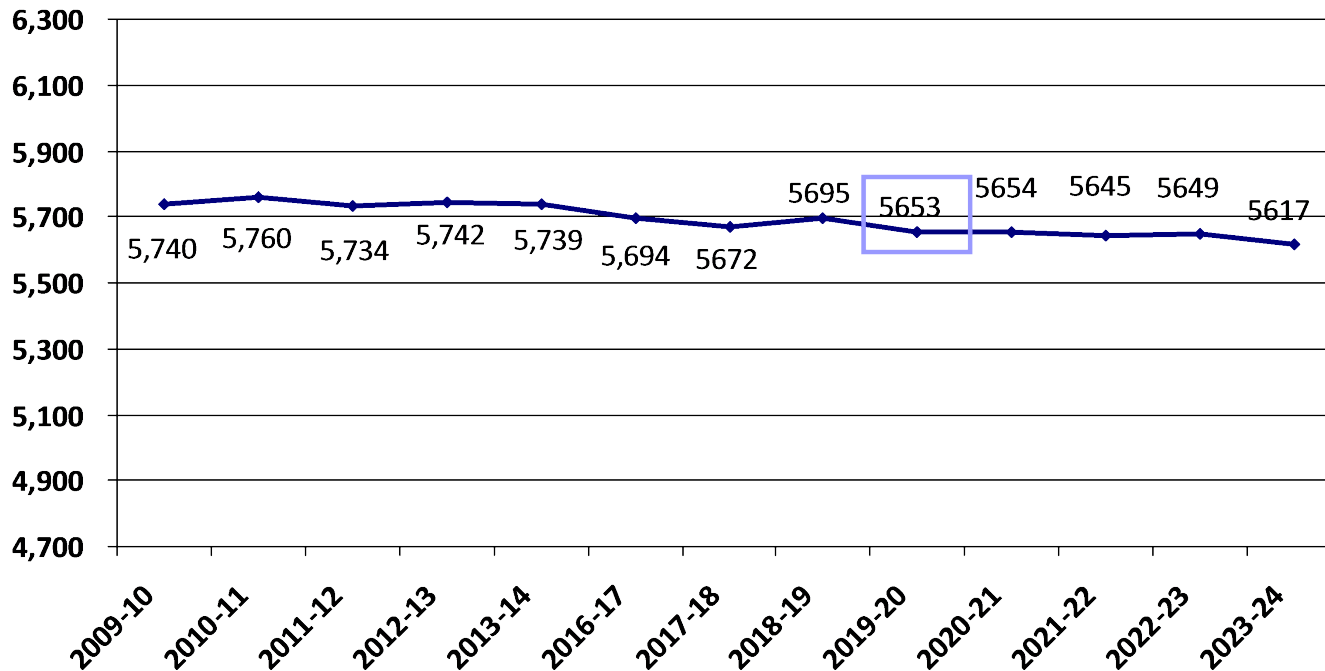
- Review of K-12 enrollment as of Oct. 1st
- Resident enrollment
- Open enrollment & tuition
- Nonpublic enrollment
- Fall vs. spring enrollment
- Review 2019-20 enrollment projection
- 2020-21 enrollment projection



Historical and 2020-21 Projected K-12 Enrollment as of Oct. 1st



Prior Year 2019-20 Enrollment Projection



Review of K-12 Enrollment as of Oct. 1st

- We are behind the projection for 2019-20 by .3 students.
- The five-year enrollment is a decline and currently averaging -13 students/year.
- Total enrollment decline for the past five years is -66 students or -1.17%.

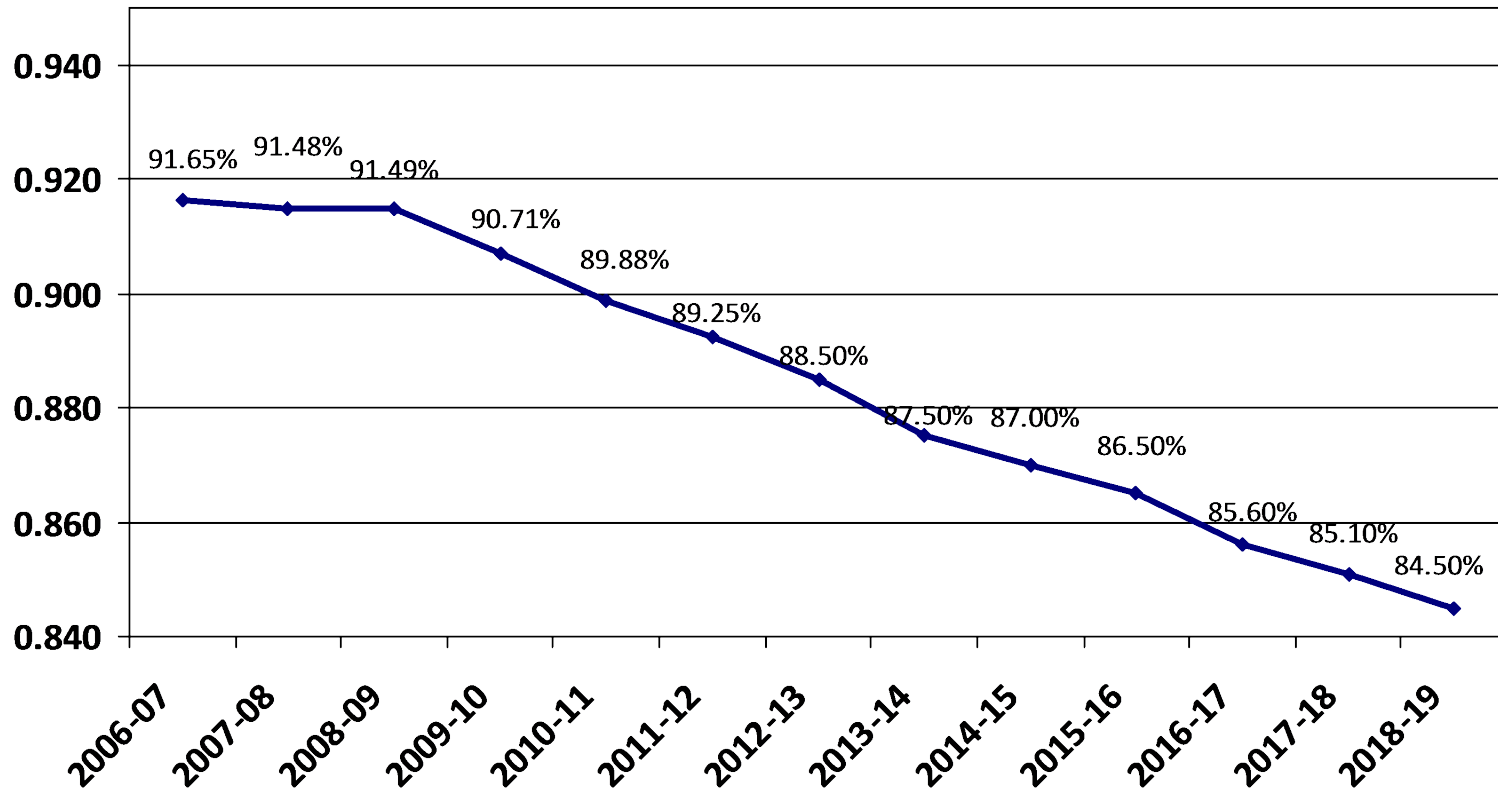
	2015-16	2016-17	2017-18	2018-19	2019-20
K-12 enrollment	5,664	5,694	5,672	5,695	5,653
Change over prior year	-55	30	-22	+23	-42
% change	-.96%	.53%	-.39%	.41%	-.74%

Total Resident Students Enrolled in ISD 877 as of June 30th

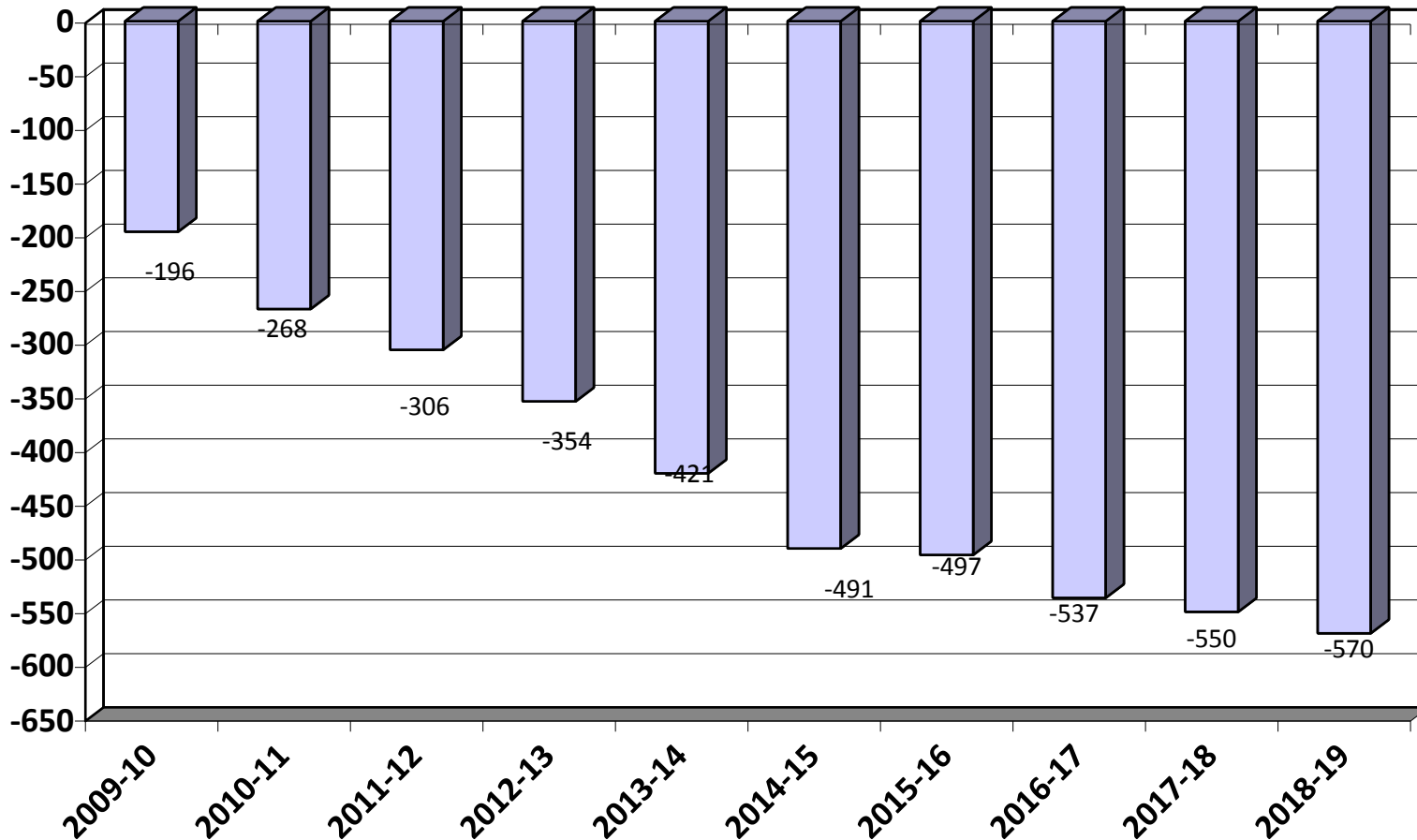
- BHM's resident population and residents served population grew this past year. Residents served was at its highest point in the last five years but still shows a decline in percentage served vs total population.

	2014-15	2015-16	2016-17	2017-18	2018-19
Residents served	5,402	5,369	5,348	5,309	5,323
Residents going elsewhere	810	837	902	931	980
Total Residents	6,212	6,206	6,250	6,240	6,303
Change over prior year	77	-6	44	10	63
% change	1.26%	-.10%	.71%	-.16%	1.01%
% Served vs Total Population	87.0%	86.5%	85.6%	85.1%	84.5%

Total Resident Students Enrolled in ISD 877 as of June 30th



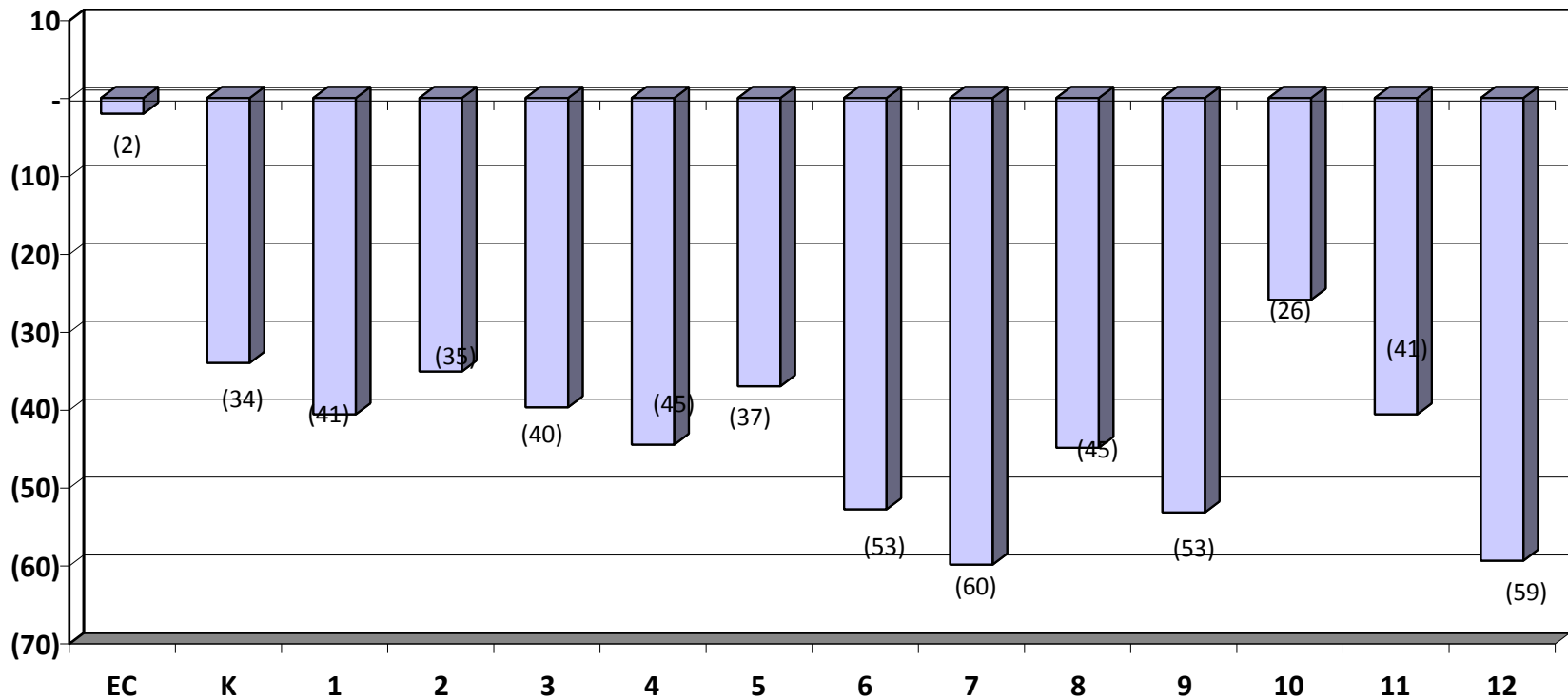
Open Enrollment & Tuition Net Gain/Loss as of June 30th



2018-19 Open Enrollment & Tuition Gain/Loss by District as of June 30th

District	In	Out	Net	Prior Year	Targeted Services, Tuition, and Charter/Online	
Rockford	38	194	-155	-164	SW Metro Coop	-25
Delano	8	156	-149	-147	Wright Tech Center	-25
Watertown-Mayer	7	69	-62	-63	Minnesota Transitions	-24
St. Michael-Albertville	93	122	-30	-17	Jane Goodall	-21
Orono	0	30	-30	-25	Spectrum High School	-15
Elk River	27	45	-18	-19	Parnassus Prep	-7
Osseo	8	26	-18	-16	MAWSECO	-6
Anoka-Hennepin	5	2	3	4	Swan River Montessori	-5
Dassel-Cokato	7	2	6	1	Bluesky Charter School	-5
Annandale	15	9	6	12	Eagle Ridge Academy	-4
Monticello	47	35	11	25		
Big Lake	13	0	12	9		
HLWW	59	45	14	13		
Maple Lake	64	33	31	31		

2018-19 Open Enrollment & Tuition by Grade as of June 30th

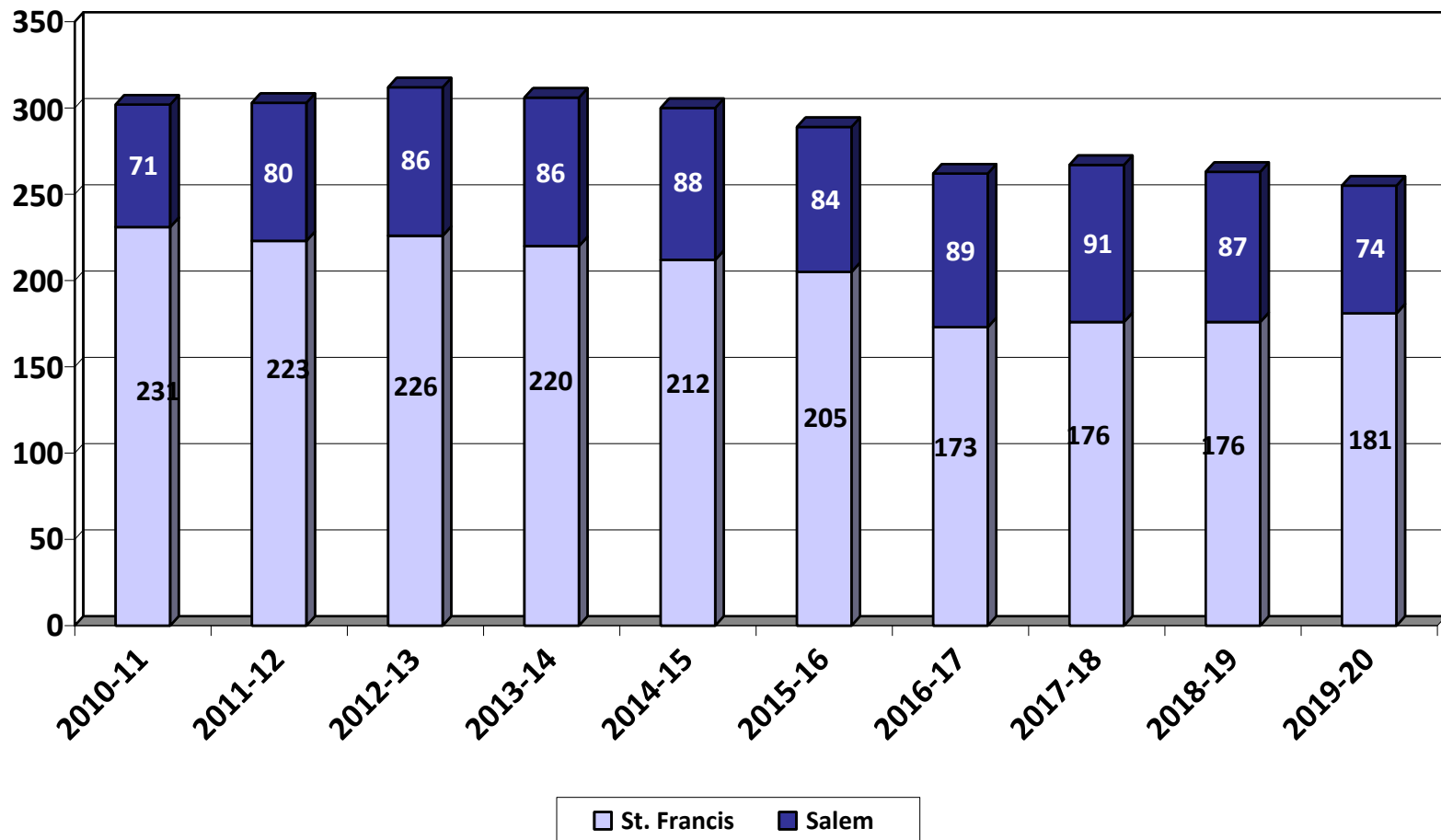


Nonpublic History

- Two nonpublic schools in the BHM district: St. Francis Xavier in Buffalo and Salem Lutheran in Greenfield.
- Both schools serve students from kindergarten through 8th grade.
- Home school totals, not graphed below, were 205 on 10/1/16, 184 on 10/1/17, 206 on 10/1/18 and 220 on 10/1/19.

	10-11	11-12	12-13	13-14	14-15	15-16	16-17	17-18	18-19	19-20
Salem	71	80	86	86	88	84	89	91	87	74
St. Francis	231	223	226	220	212	205	173	176	176	181
Total	302	303	312	306	300	289	262	267	263	255
# Change	23	1	9	-6	-6	-11	-27	5	-4	-4
% Change	8.2%	.33%	2.97%	-.92%	-1.96%	-3.67%	-9.34%	1.91%	-1.50%	-1.50%

Nonpublic History



2018-19 Enrollment Fall vs. Spring

- Historically, the district's K-12 enrollment decreases from October 1 to June 1.
- Most of the enrollment drops happen in grades 9-12.

	Oct. 1st, 2018	Jun. 1st, 2019	Net
K	391	400	9
Gr. 1-5	2,062	2,082	20
Gr. 6-8	1,381	1,378	-3
Gr. 9-12	1,861	1,790	-71
Total	5,695	5,650	-45

Historical Enrollment Fall vs. Spring

- The district had one flat year (2006-07) of enrollment growth. All other years have declined during the year.

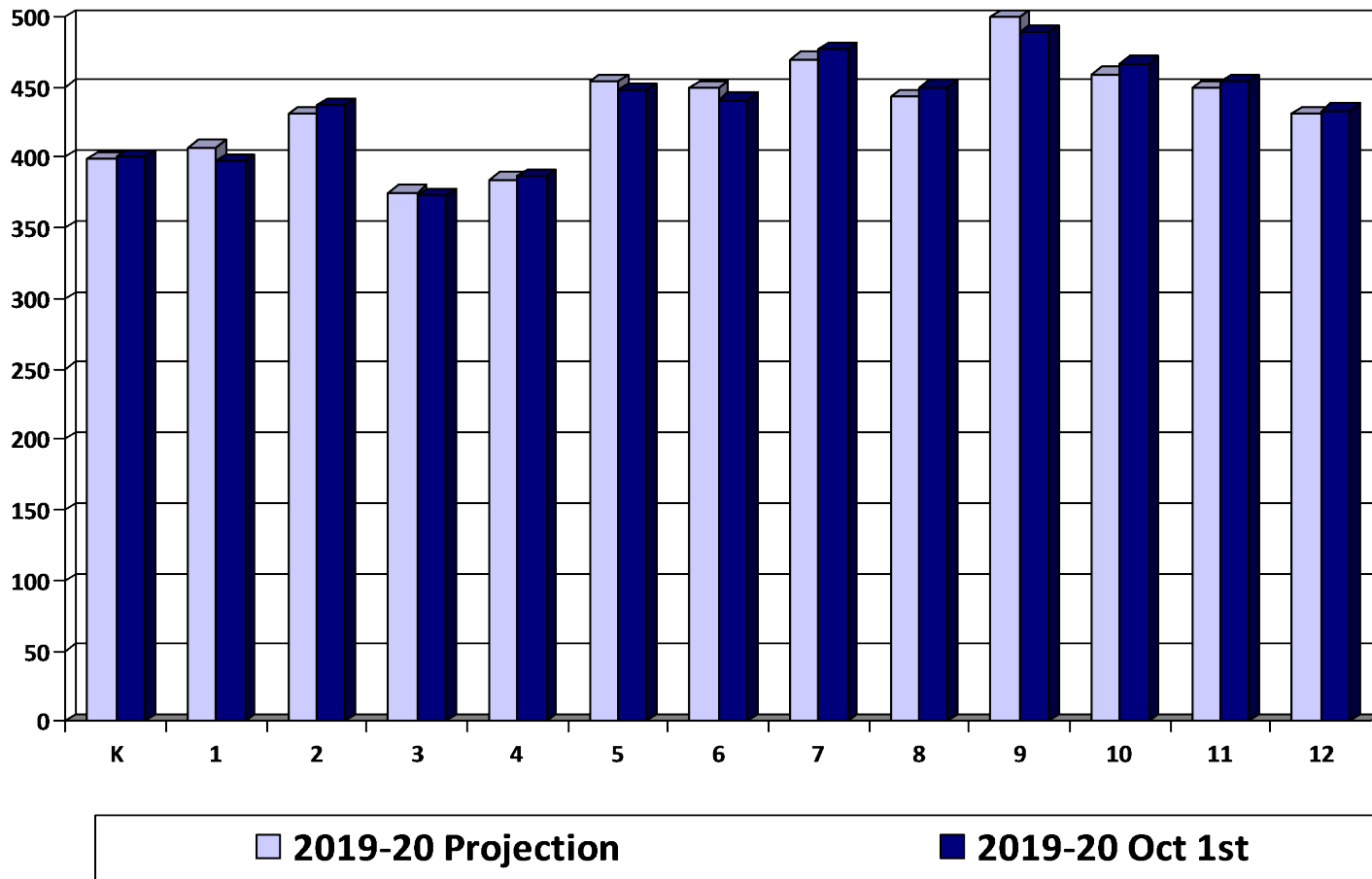
	K	Gr. 1-5	Gr. 6-8	Gr. 9-12	Net
2009-10	-2	14	-17	-58	-63
2010-11	1	-11	-10	-63	-83
2011-12	-10	-11	-14	-94	-129
2012-13	-2	-14	1	-86	-101
2013-14	2	-7	2	-127	-130
2014-15	-10	6	-8	-89	-101
2015-16	7	39	-1	-99	-54
2016-17	3	-16	10	-110	-113
2017-18	1	14	-11	-107	-103
2018-19	9	20	-3	-71	-45

Review of 2019-20 Enrollment Projection

- Last year's enrollment projection was under-estimated by .3 students.
- Our internal monthly enrollment reports adjust down post-secondary and shared time students.
- The official Oct. 1st MARSS submission by MDE will report a higher enrollment with post-secondary and shared time students.

	2019-20 Projection	2019-20 Oct. 1st	Difference
K	399	400	1
Gr. 1-5	2,051	2,042	-9
Gr. 6-8	1,362	1,368	6
Gr. 9-12	1,841	1,843	2
Total	5,653	5,653	0

Review of 2019-20 Enrollment Projection by Grade



Enrollment Projection Data



Enrollment Projection Data

- The district uses the Schoolfinances.com enrollment projection model.
- The model allows schools to develop enrollment projections based on three different sets of data:
 - **October 1st MARSS submission**
 - **End of Year ADM** is generally used for financial forecast
 - **District Data** allows schools to enter enrollment history taken at any time, resident ADM or any other historical data by grade

Kindergarten Projection Methods

- **Hold constant** maintains the 2019-20 kindergarten level.
- **Linear projection** is a straightforward mathematical projection based on nothing more than the past five years of data.
- **County birth method** uses the total number of live births in Wright County and examines what percentage of those births enroll in kindergarten. The projection is based on the average percentage of the last four years.
- **Zip code method** examines the zip codes in the district and uses a linear projection of live births on the last four years of data and computes the projected enrollment based on the lowest, average, and highest ratios.
- **District-determined method** examines county birth rates in Wright County and compares that to actual student enrollment numbers in the District and projects that percentage for the next five years.

Kindergarten Projection Methods

Birth Year	Kdgn Enroll Year	Wright Co. Births	Actual Kdgn Enrollment	% of Wright Co. Births Enrolled
2008	2013	2,097	378	18.0%
2009	2014	1,949	417	21.4%
2010	2015	1,891	370	19.6%
2011	2016	1855	358	19.3%
2012	2017	1829	413	22.6%
2013	2018	1784	391	21.9%
2014	2019	1791	400	22.3%
2015	2020	1764	390*	22.1%*
2016	2021	1785	394*	22.1%*
2017	2022	1705	377*	22.1%*
2018	2023	1717	379*	22.1%*

* Projected K enrollment based on County births-2-year average

Kindergarten Projection Methods

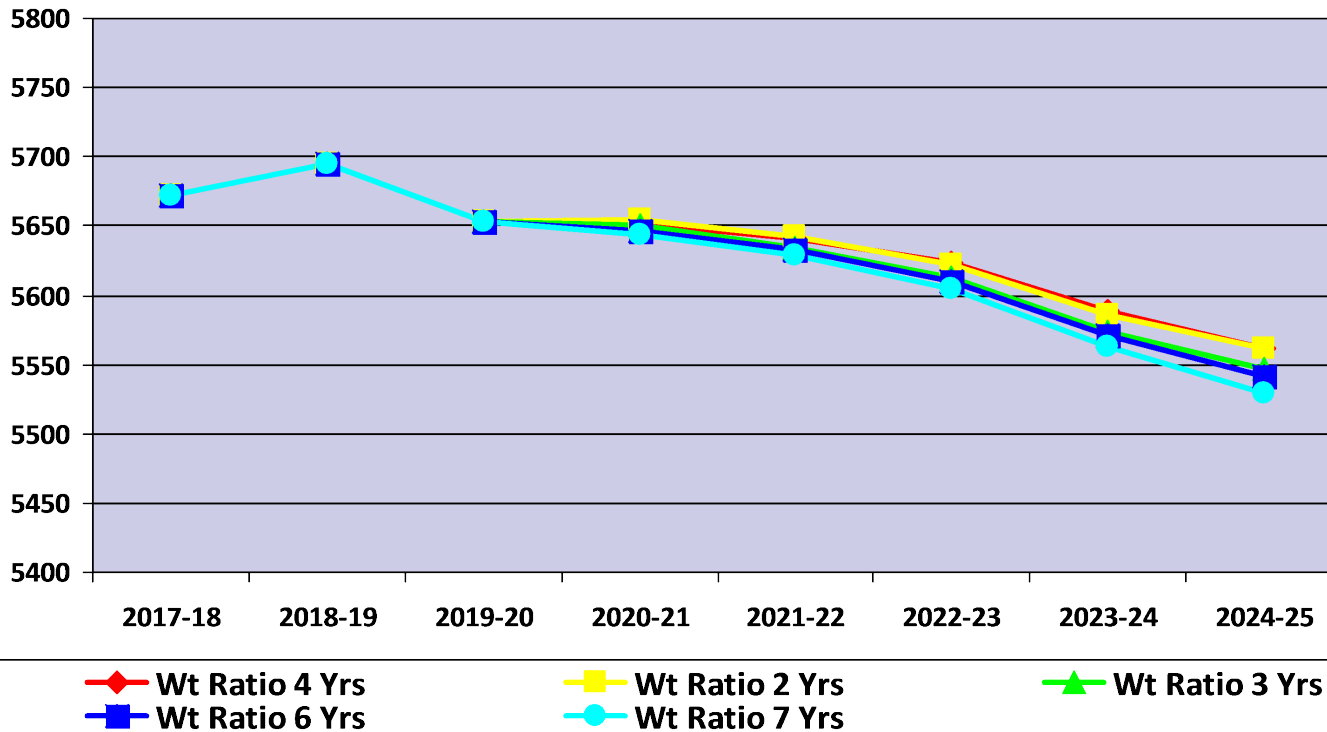
- Using Oct. 1st district data

	15-16	16-17	17-18	18-19	19-20	20-21	21-22	22-23	23-24	24-25
Actual enrollment	370	358	413	391	400					
Hold constant						400	400	400	400	400
Linear projection						395	396	397	398	399
Wright Co. Ave. births						380	377	378	368	364
Zip code method - Low						356	333	334	327	330
District Determined Method						390	394	377	379	376

Enrollment Projection Methods

- After the kindergarten enrollment projection is complete, the overall K-12 enrollment is determined by a variety of methods:
 - Cohort Survival Method
 - Weighted Cohort Survival Method
 - Numerical Survival Method
 - Weighted Numerical Survival Method
 - Merged Method

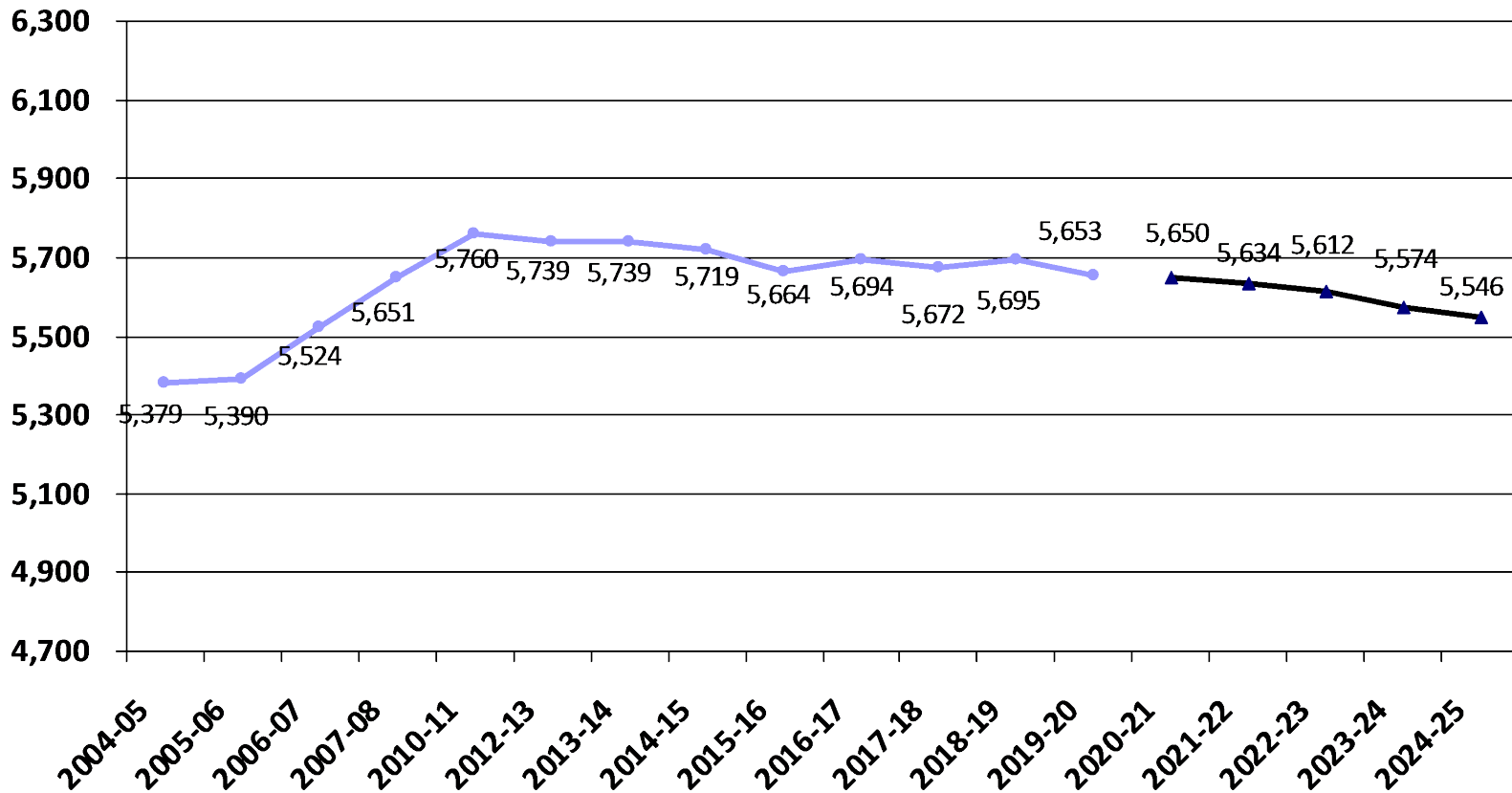
Projection Methods Comparison



2020-21 Enrollment Projection

- Factors considered: housing market, economic conditions, Wright County births, and open enrollment
 - 46 2019 Buffalo single family dwelling permits issued - 45 for 2018
 - 16 2019 Hanover single family dwelling permits issued - 10 for 2018
 - 38 2019 Montrose single family dwelling permits issued - not available for 2018
- 2-year kindergarten attendance average 22.1%
- Weighted ratio 3 years
- K-12 Enrollment 5,650
- Decrease of 3 students or 0.05%

Historical and 2020-21 Projected K-12 Enrollment as of Oct. 1st

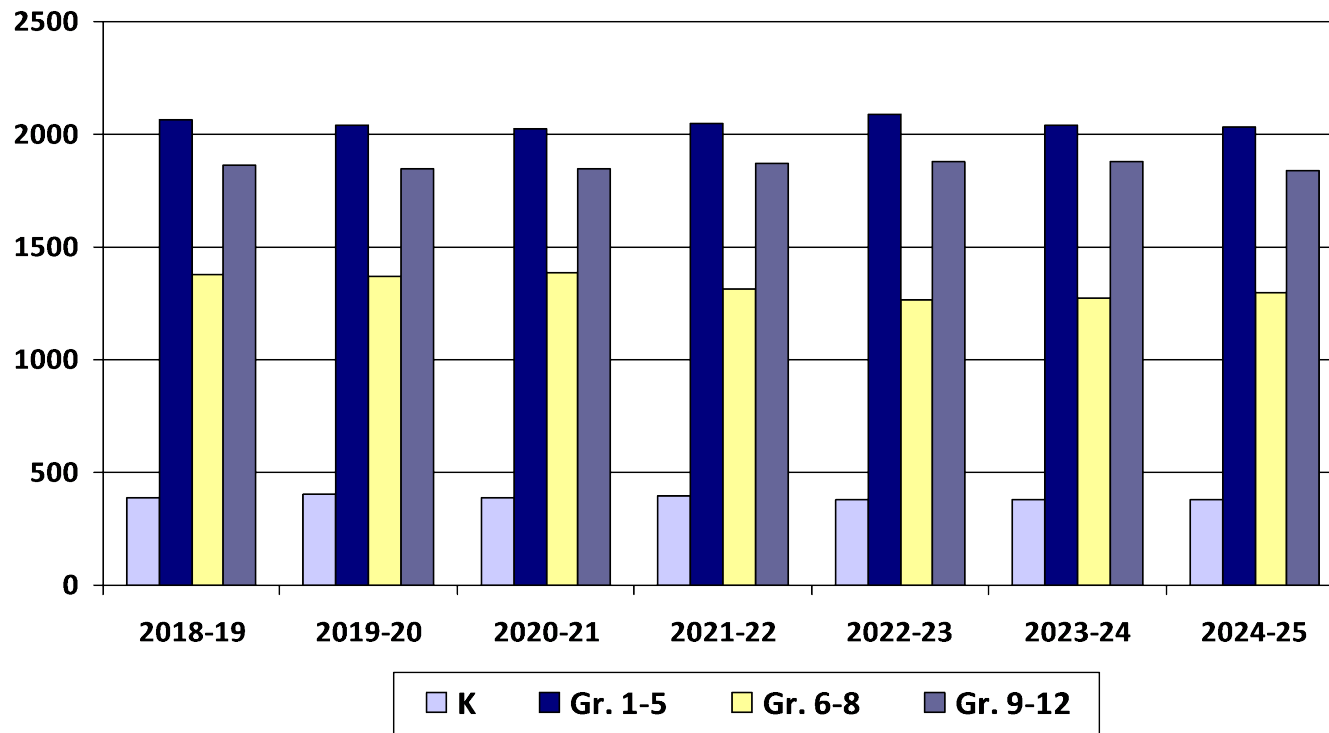


2020-21 Enrollment Projection by Grade Groupings

- With future enrollments, need to consider building capacity:
 - BHS – 1,935, PHX – 64 and PRIDE – 25
 - BCMS – 1,425
 - Elementary – 3,300

	2019-20	2020-21	2021-22	2022-23	2023-24	2024-25
K	400	390	394	377	379	376
Gr. 1-5	2,042	2,023	2,050	2,088	2,040	2,032
Gr. 6-8	1,368	1,387	1,318	1,270	1,275	1,300
Gr. 9-12	1,843	1,850	1,872	1,877	1,880	1,838
Total	5,653	5,650	5,634	5,612	5,574	5,546
	-42	-3	-16	-22	-38	-28
	-.74%	-.05%	-.28%	-.38%	-.68%	-.5%

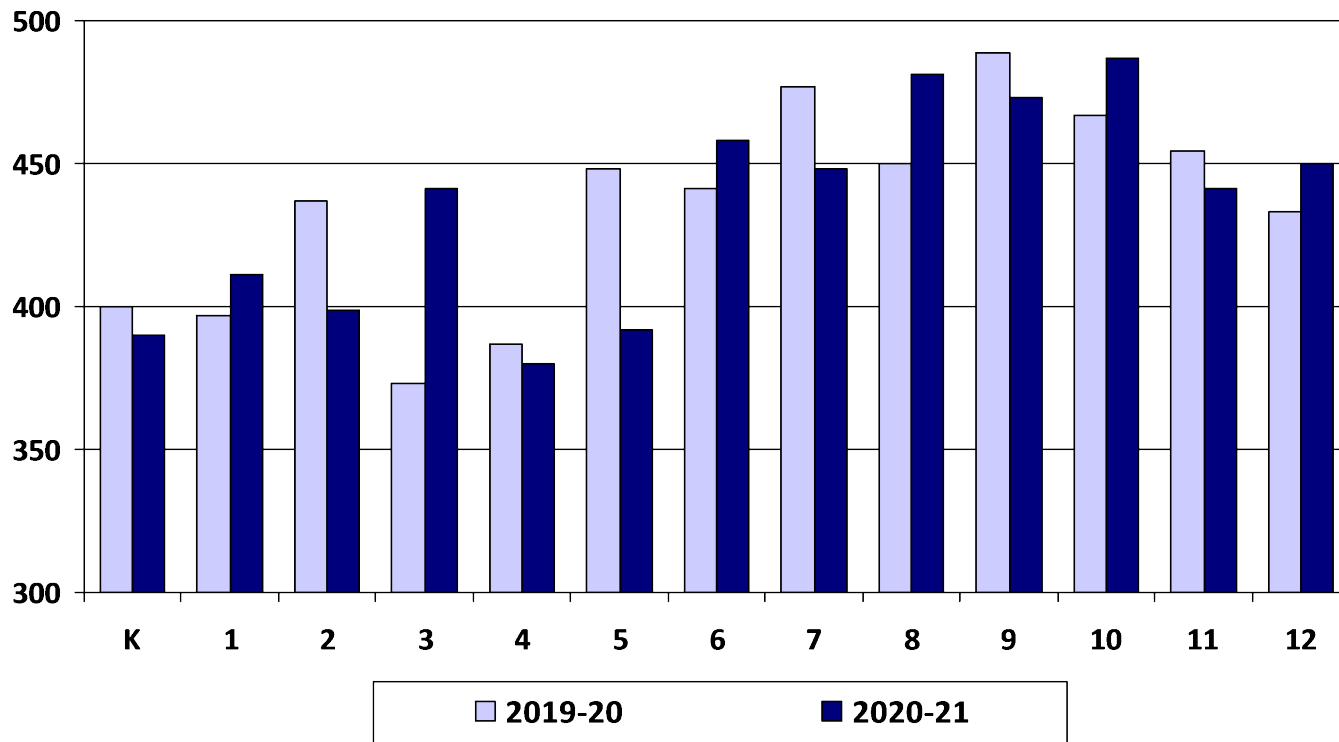
2020-21 Enrollment Projection by Grade Groupings



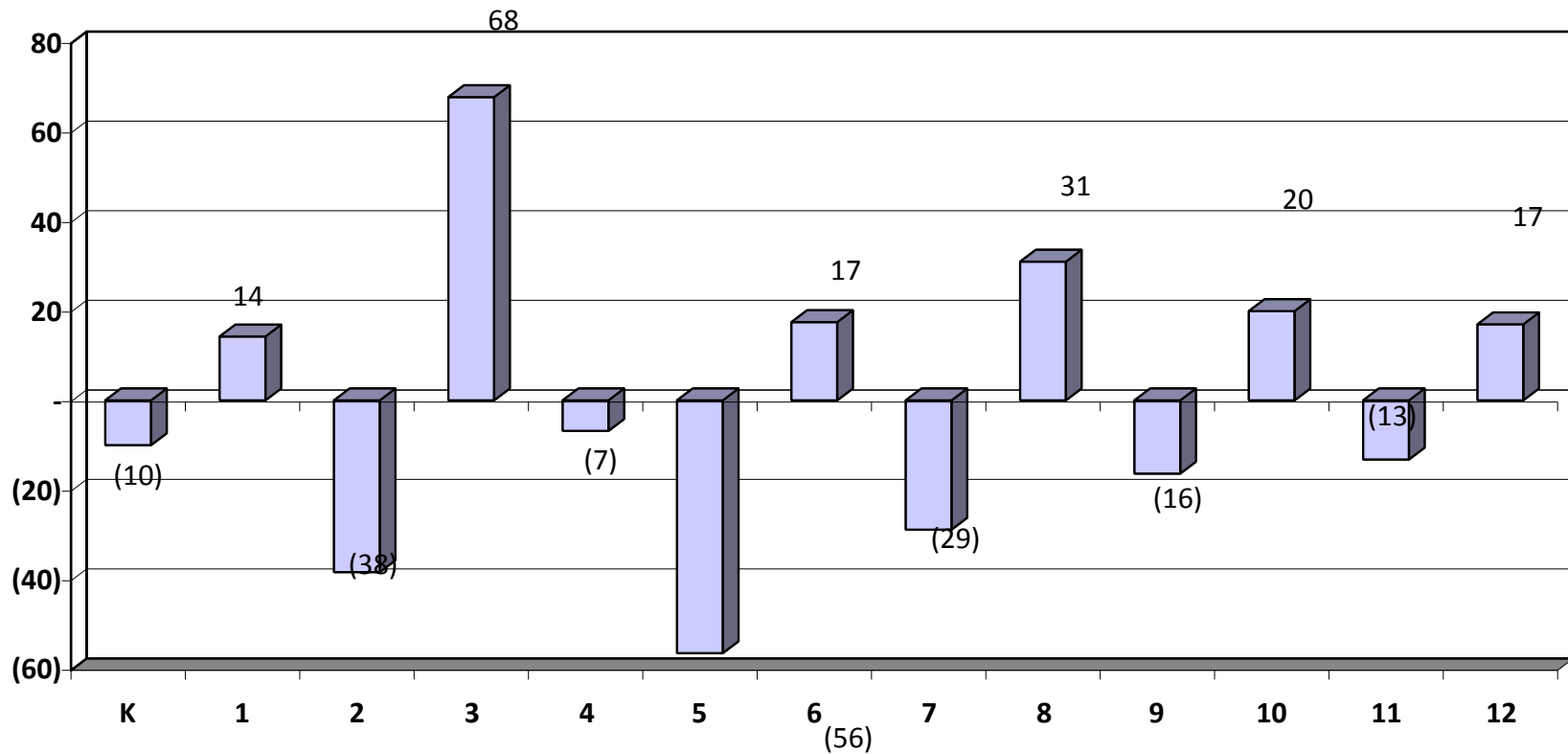
2020-21 Enrollment Projection by Grade

	2019-20	2020-21	2021-22	2022-23	2023-24	2024-25
K	400	390	394	377	379	376
1	397	411	401	405	388	390
2	437	399	413	403	407	389
3	373	441	402	416	406	410
4	387	380	449	410	424	414
5	448	392	385	454	415	429
6	441	458	401	394	465	424
7	477	448	466	407	400	473
8	450	481	452	470	410	403
9	489	473	505	474	493	431
10	467	487	470	503	472	491
11	454	441	460	444	475	446
12	433	450	437	455	440	470
Total	5,653	5,650	5,634	5,612	5,574	5,546

2019-20 Actual vs. 2020-21 Enrollment Projection by Grade



2020-21 Enrollment Change by Grade



WADM Report

- The weighted average daily membership (WADM) projection shows a decline in student aid.
- Keep in mind the district's enrollment history also tends to decline from Oct. 1st to June 1st.

	2019-20		2020-21		2021-22		2022-23		2023-24	
	Enroll	WADM	Enroll	WADM	Enroll	WADM	Enroll	WADM	Enroll	WADM
HK	52	52	52	52	52	52	52	52	52	52
K	400	400	390	390	394	394	377	377	379	379
Gr. 1-3	1,207	1,207	1,251	1,251	1,216	1,216	1,224	1,224	1,200	1,200
Gr. 4-6	1,276	1,276	1,230	1,230	1,234	1,234	1,258	1,258	1,304	1,304
Gr. 7-8	927	1,112	929	1,115	918	1,101	877	1,052	810	972
Gr. 9-12	1,843	2,211	1,850	2,220	1,872	2,246	1,877	2,252	1,880	2,256
ECSE	97	97	100	100	97	97	98	98	97	97
MCPU		2		-		5		8		15
Total	5,802	6,357	5,802	6,358	5,783	6,346	5,763	6,321	5,723	6,275

Conclusion

- Uncertain economic factors make enrollment projections difficult.
- BHM's enrollment is projected to decline slightly over the next three to five years.



5,650