



# UNITY SCHOOL DISTRICT

Finance Report - December 2025  
January 12, 2026 Board Meeting

## Unity School District Budget Dashboard - 2025/2026 - Month Ending December 31, 2025

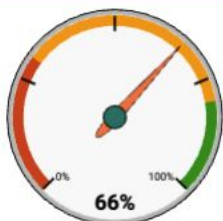
% of the School Year Complete 50%

### TOTAL DISTRICT



BUDGET	\$25,074,122	
SPENDING	\$ 8,892,423	35%
AVAILABLE	\$16,181,699	65%

### FUND 10 Total (General)



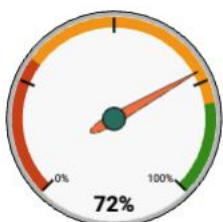
BUDGET	\$17,008,275	
SPENDING	\$ 5,816,044	34%
AVAILABLE	\$11,192,231	66%

### FUND 27 Total (Special Education)



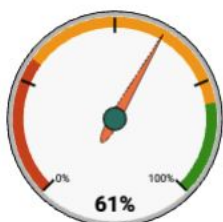
BUDGET	\$3,385,247	
SPENDING	\$ 1,302,445	38%
AVAILABLE	\$2,082,802	62%

### FUND 29 Total (Native American)



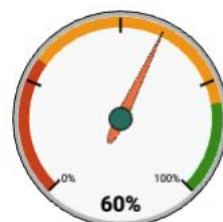
BUDGET	\$ 21,000	
SPENDING	\$ 5,788	28%
AVAILABLE	\$ 15,212	72%

### FUND 38 & 39 Total (Debt)



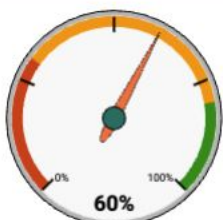
BUDGET	\$ 2,032,940	
SPENDING	\$ 792,358	39%
AVAILABLE	\$ 1,240,582	61%

### FUND 50 Total (Food Service)



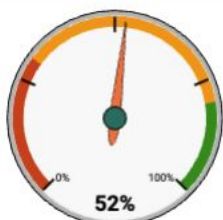
BUDGET	\$ 827,327	
SPENDING	\$ 334,068	40%
AVAILABLE	\$ 493,259	60%

### FUND 80 TO 86 Total (Community Ed)



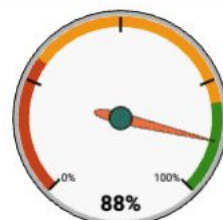
BUDGET	\$ 1,353,967	
SPENDING	\$ 536,204	40%
AVAILABLE	\$ 817,763	60%

### FUND 21 Total (Student Activities)



BUDGET	\$ 149,811	
SPENDING	\$ 71,269	48%
AVAILABLE	\$ 78,542	52%

### FUND 73 Total (EE Trust)



BUDGET	\$ 295,555	
SPENDING	\$ 34,247	12%
AVAILABLE	\$ 261,308	88%

### Notables:

- Required a draw on our line of credit until tax payments are received.
- Meet with Alera to review health care utilization trends and discuss benefits. Will be hosting a retirement planning meeting at the January in-service meeting.
- Food Service DPI Review occurred, will hear outcome of the review by the end of the month.
- Will be combining scholarship checking accounts into one general account to streamline processing.

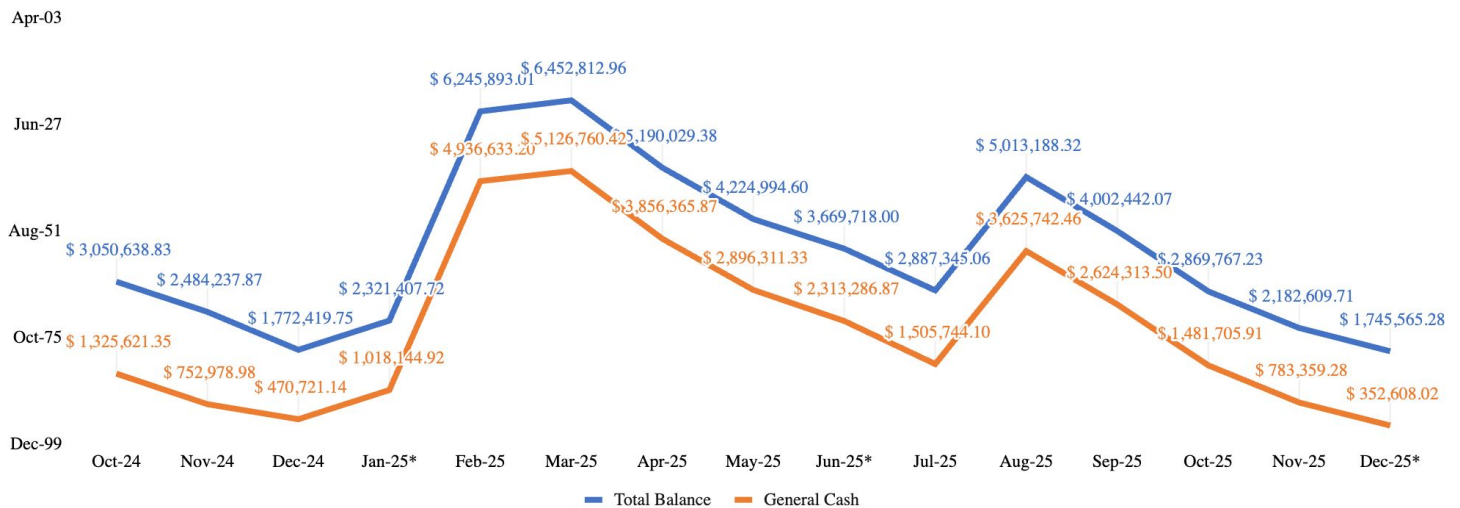


# UNITY SCHOOL DISTRICT

December 31, 2025  
UNITY SCHOOL DISTRICT  
ALL FUNDS  
PROOF OF CASH

BANK ACCOUNT	BALANCE November 30, 2025	DEPOSITS/ RECEIPTS	WITHDRAWALS/ DISBURSEMENTS	BALANCE December 31, 2025
Pillar Bank - 4034 General Checking	\$ 0.00	\$ 1,442,964.00	\$ 1,442,964.00	\$ 0.00
Pillar Bank - 3781 Sweep	\$ 783,359.28	\$ 1,045,786.59	\$ 1,476,537.85	\$ 352,608.02
Pillar Bank - 9458 Debt Service	\$ 1,466.54	\$ 5.41	\$ -	\$ 1,471.95
LGIP - #1 - Debt Service	\$ 55,702.44	\$ 180.95	\$ -	\$ 55,883.39
LGIP - #2 - General	\$ 2,118.10	\$ 6.88	\$ -	\$ 2,124.98
Midwest Institutional Trust - OPEB Fund 73	\$ 449,835.71	\$ 2,671.08	\$ 1,049.73	\$ 451,457.06
Old National Bank - Cap Imprvmt Money Market Premi	\$ 10,033.54	\$ 34.65	\$ 33.54	\$ 10,034.65
Old National Bank - Capital Improvement Sweep	\$ 484,280.11	\$ 1,598.11	\$ -	\$ 485,878.22
Pillar Bank - 3863 ES Activity	\$ 13,372.24	\$ 207.51	\$ 1,064.23	\$ 12,515.52
Pillar Bank - 8579 MS Activity	\$ 36,462.53	\$ 128.81	\$ 2,920.38	\$ 33,670.96
Pillar Bank - 3894 HS Activity	\$ 112,339.73	\$ 9,920.26	\$ 17,636.50	\$ 104,623.49
Pillar Bank - 7068 Scholarship Milltown CC	\$ 40,953.14	\$ 435.75	\$ -	\$ 41,388.89
Pillar Bank- 1817 Scholarship Lumsden	\$ 38,171.95	\$ 406.16	\$ -	\$ 38,578.11
Pillar Bank - 2643 Scholarship Amery Farmers	\$ 17,800.23	\$ 189.40	\$ -	\$ 17,989.63
Pillar Bank - 7799 Scholarship Checking	\$ 119,392.32	\$ 7,938.81	\$ 7,496.88	\$ 119,834.25
Pillar Bank - 1217 Scholarship G Melby Am Legion	\$ 17,321.85	\$ 184.31	\$ -	\$ 17,506.16
	\$ 2,182,609.71	\$ 2,512,658.68	\$ 2,949,703.11	\$ 1,745,565.28

Proof of Cash - Rolling 13 Months - November 2025



\* Line of Credit Draw

December 2025 Vouchers





# UNITY SCHOOL DISTRICT

## UNITY SCHOOL DISTRICT

ACTIVITY ACCOUNT SUMMARY AS OF DECEMBER 31, 2025

### HIGH SCHOOL

ACCOUNT	BEG BALANCE	INCOME	EXPENSES	END BALANCE
164940-General Account	\$20,197.72	\$407.33	\$26.35	\$20,578.70
164941-Basketball - Boys	\$6,455.94	\$0.00	\$1,967.50	\$4,488.44
164942-Baseball - HS	\$5,636.75	\$0.00	\$0.00	\$5,636.75
164943-FFA	\$21,670.80	\$987.00	\$7,815.79	\$14,842.01
164944-FBLA	\$2,499.75	\$617.29	\$1,159.00	\$1,958.04
164945-Skills USA	\$7,694.53	\$120.00	\$574.46	\$7,240.07
164946-Athletics	\$1,221.15	\$0.00	\$0.00	\$1,221.15
164947-Football	\$3,379.54	\$160.00	\$0.00	\$3,539.54
164948-Volleyball	\$4,928.22	\$0.00	\$0.00	\$4,928.22
164949-Softball	\$2,957.38	\$0.00	\$0.00	\$2,957.38
1644950-Soccer Club	\$278.50	\$0.00	\$0.00	\$278.50
164951-Migizi Club	\$1,181.97	\$0.00	\$0.00	\$1,181.97
164952-Music Club	\$5,760.10	\$1,018.47	\$1,002.00	\$5,776.57
164953-Natnl Honor Society	\$658.65	\$0.00	\$0.00	\$658.65
164954-Student Council	\$660.25	\$953.75	\$1,153.66	\$460.34
164955-Theatre Arts/Drama	\$6,525.92	\$3,606.42	\$1,722.17	\$8,410.17
164956-Library	\$1,827.64	\$0.00	\$0.00	\$1,827.64
164957-Farm2School	\$1,287.34	\$0.00	\$0.00	\$1,287.34
164958-Tennis	\$4,481.64	\$0.00	\$0.00	\$4,481.64
164421 - Cross Country	\$99.51	\$0.00	\$30.00	\$69.51
164959 - Science Olympiad	\$6,188.01	\$0.00	\$1,548.46	\$4,639.55
164960 - Trap Team	\$1,500.00	\$0.00	\$0.00	\$1,500.00
164961 - Travel Club	\$167.23	\$362.00	\$372.86	\$156.37
164425 - Class of 2025	\$1,507.01	\$0.00	\$0.00	\$1,507.01
164426 - Class of 2026	\$2,132.28	\$0.00	\$0.00	\$2,132.28
164427 - Class of 2027	\$200.00	\$1,688.00	\$1,198.00	\$690.00
164428 - Class of 2028	\$0.00	\$0.00	\$0.00	\$0.00
<b>TOTALS</b>	<b>\$111,097.83</b>	<b>\$9,920.26</b>	<b>\$18,570.25</b>	<b>\$102,447.84</b>



# UNITY SCHOOL DISTRICT

## UNITY SCHOOL DISTRICT

ACTIVITY ACCOUNT SUMMARY AS OF DECEMBER 31, 2025

### MIDDLE SCHOOL

ACCOUNT	BEG BALANCE	INCOME	EXPENSES	END BALANCE
General	\$8,067.80	\$128.81	\$97.29	\$8,099.32
Student Council	\$4,796.88	\$0.00	\$1,375.74	\$3,421.14
Drama	\$1,949.60	\$0.00	\$0.00	\$1,949.60
Sopko Ice Fishing	\$61.48	\$0.00	\$262.35	-\$200.87
PE Program	\$623.50	\$0.00	\$0.00	\$623.50
MS Athletics	\$387.55	\$0.00	\$0.00	\$387.55
Girls Traveling Bball	\$12,457.77	\$0.00	\$1,352.50	\$11,105.27
Wrestling	\$7,877.95	\$0.00	\$0.00	\$7,877.95
<b>TOTALS</b>	<b>\$36,222.53</b>	<b>\$128.81</b>	<b>\$3,087.88</b>	<b>\$33,263.46</b>

### ELEMENTARY SCHOOL

ACCOUNT	BEG BALANCE	INCOME	EXPENSE	END BALANCE
General	\$10,703.08	\$207.51	\$1,064.23	\$9,846.36
Yearbook	\$2,289.33	\$0.00	\$0.00	\$2,289.33
<b>TOTALS</b>	<b>\$12,992.41</b>	<b>\$207.51</b>	<b>\$1,064.23</b>	<b>\$12,135.69</b>