

SSAISD BOARD AGENDA - ITEM SUMMARY

MEETING DATE:	May 21, 2014
MEETING TYPE:	<input checked="" type="checkbox"/> REGULAR <input type="checkbox"/> SPECIAL
ITEM TITLE:	Discussion and possible action to approve the art design presented by the Edu-Source Corporation for the South San High School Cafeteria in the amount of \$46,151.11
PURPOSE:	<input type="checkbox"/> RECOGNITION <input type="checkbox"/> REPORT ONLY <input type="checkbox"/> DISCUSSION <input checked="" type="checkbox"/> ACTION
PRESENTER(S):	Jenny Arredondo, Interim CFO
REQUESTED BY:	Jenny Arredondo, Interim CFO

I. DESCRIPTION OF ITEM TO INCLUDE YOUR SPECIFIC REQUEST:

The proposed art design presented by the Edu-Source Corporation for the South San Antonio High School cafeteria is similar in design to all cafeterias district wide. The Child Nutrition Department would like to add the same colorful artistic theme to the newly constructed school. The Edu-Source Corporation is a Texas 20 vendor, contract #5027B.

II. BACKGROUND INFORMATION (DOCUMENTATION):

Please find the design plans and quote attached.

III. ALTERNATIVES CONSIDERED (IF APPLICABLE):

N/A

IV. RECOMMENDATION AND IMPACT:

The proposed design has been approved by the Texas Department of Agriculture in a plan submitted by the SSAISD Child Nutrition Department to utilize excessive fund balance.

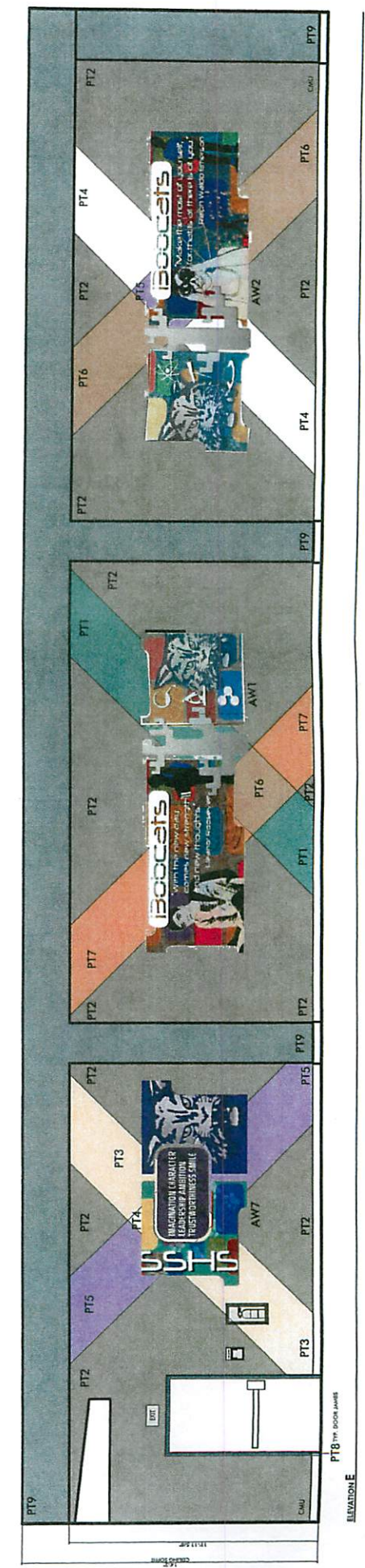
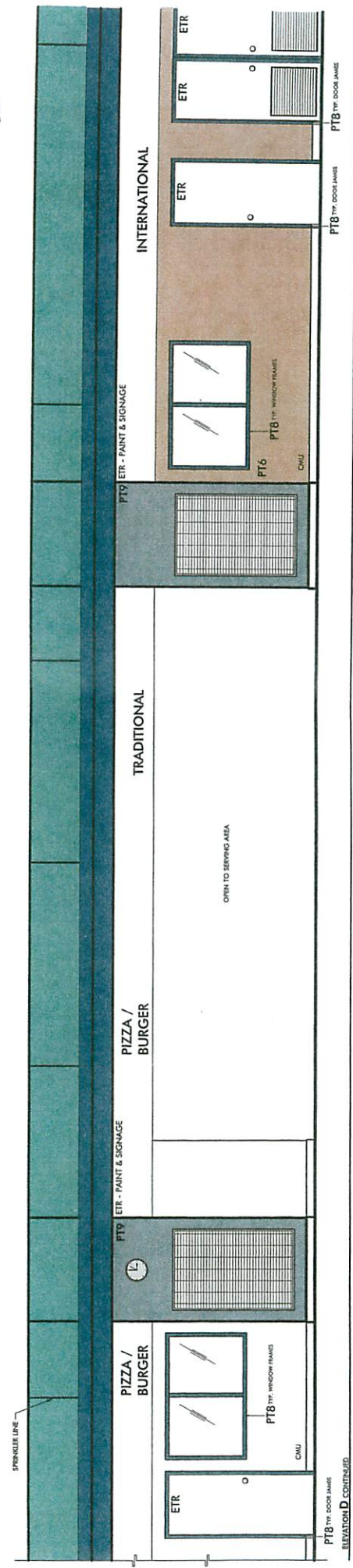
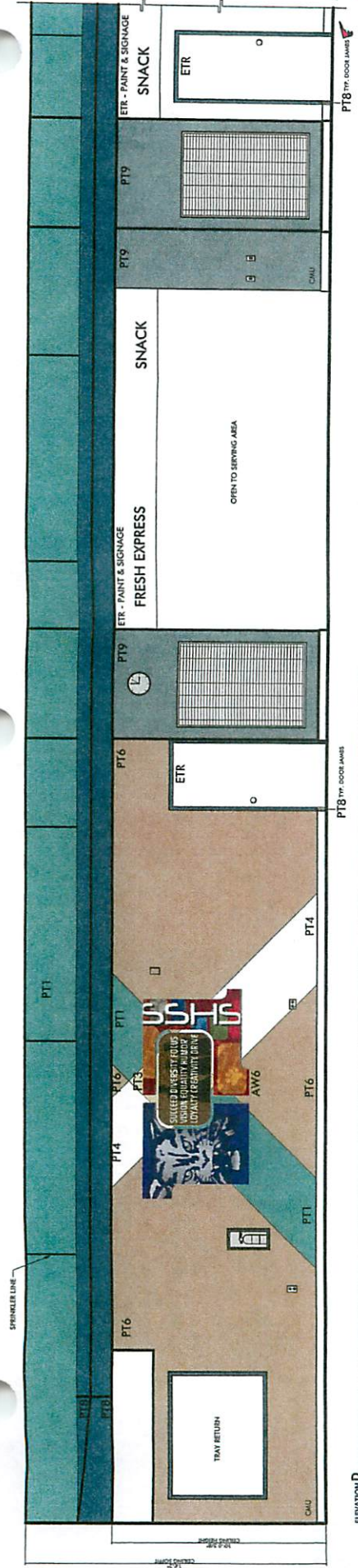
V. DISTRICT GOAL AND CORRESPONDING DEPARTMENTAL INITIATIVE:

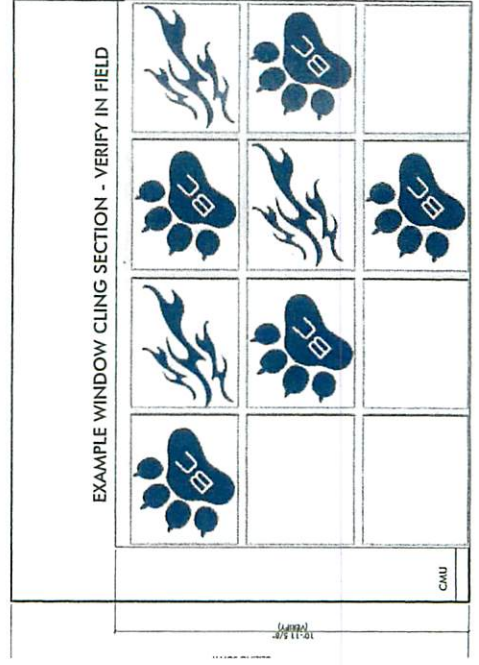
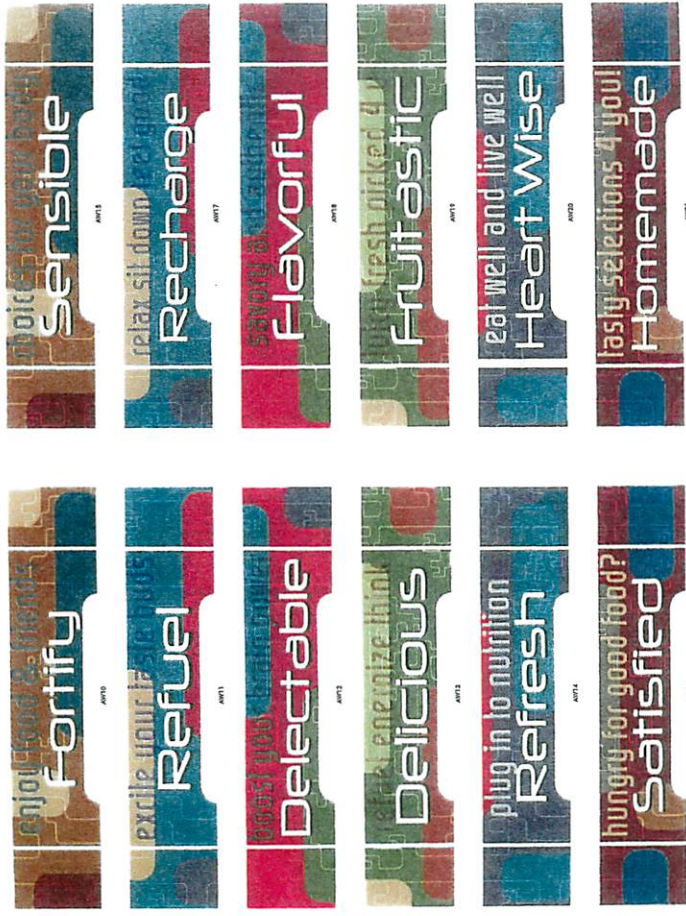
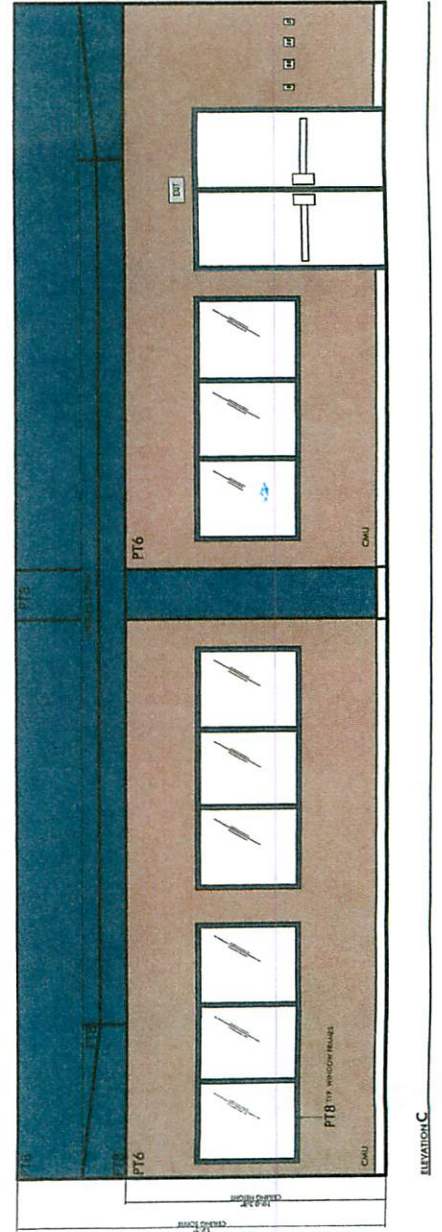
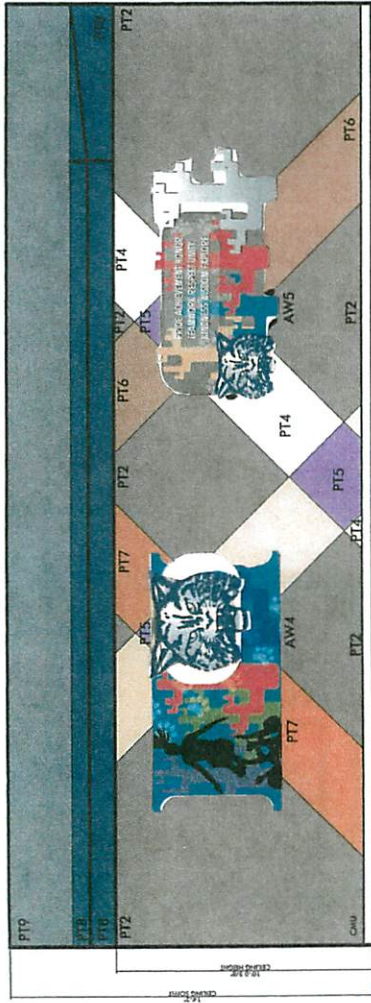
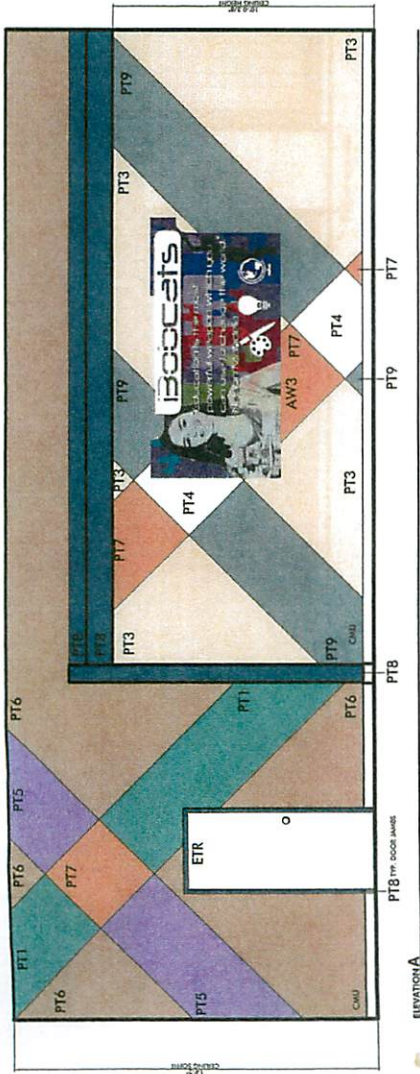
Goal 3: South San Antonio ISD district and campus operations are safe and conducive to a positive culture and climate.

VI. FUNDING SOURCE-PROGRAM AND/OR BUDGET CODE:

Child Nutrition 101-35-6299-00-001-499-000

PRELIMINARY PLANS
NOT FOR CONSTRUCTION





ELEVATION F

The Edu-Source Corp.
P.O. Box 691948, San Antonio, TX 78269
Phone (800) 258-8559 Fax (210) 699-4386

SOUTH SAN HIGH SCHOOL 7535 BARLITE BOULEVARD SAN ANTONIO, TX 78224			Date 2/3/14	
Qty	Item	Spec/Size	School Unit Price	School Extended Price
ART & DÉCOR PER DESIGN ELEVATIONS: NOTE: ALL ART AND DÉCOR IS PRICED ON A PER PROJECT BASIS, CHANGES IN SIZE AND QUANTITIES WILL AFFECT MATERIAL COSTS AND YIELDS. WHEN CHANGES OCCUR PRICING WILL BE ADJUSTED ACCORDINGLY. CUSTOM GRAPHIC ART ART ELEMENT AW-1 & AW-2: MULTI-LAYER WALL ART LAYER 1: DIRECT PRINT ON 6MM PVC (HW-WALL-CON) LAYER 2: CONTAINS 6MM PVC CUT OUT ADHERE TO LAYER 1; 1/4T MDF PRIMED AND PAINTED METALLIC SILVER AND CLEAR COAT ADHERE TO LAYER 1; BACKER PANELS AS NEEDED APPROX: 191" WIDE X 56" HIGH IMAGE: CUSTOM				
2			\$1,741.69	\$3,483.38
ART ELEMENT AW-3 & AW-4: MULTI- LAYER WALL ART LAYER 1: DIRECT PRINT ON 6MM PVC (HW-WALL-CON) LAYER 2: 6MM PVC CUT OUT ADHERE TO LAYER 1 APPROX: 120" WIDE X 60" HIGH IMAGE: CUSTOM				
2			\$1,145.21	\$2,290.41
ART ELEMENT AW-5: MULTI-LAYER WALL ART LAYER 1: DIRECT PRINT ON 6MM PVC (HW-WALL-CON) LAYER 2: CONTAINS 12MM BLACK PVC CUT OUT- ADHERE TO LAYER 1; 1/8T CLEAR PLES1 GLASS; VINYL DIE-CUT LETTERS; 1/4T MDF PRIMED & PAINTED W/METALLIC SILVER WITH CLEAR COAT APPROX: 132" WIDE X 54" HIGH IMAGE: CUSTOM				
1			\$2,120.59	\$2,120.59
ART ELEMENT AW-6 & AW-7: SINGLE LAYER WALL ART LAYER 1: DIERCT PRINT ON 6MM PVC (HW-WALL-CON) APPROX: 120" WIDE X 60" HIGH IMAGE: CUSTOM				
2			\$1,595.14	\$3,190.27
ART ELEMENT AW-8 & AW-9: DOUBLE SIDED BANNERS DOUBLE SIDED DIRECT PRINT ON 6MM PVC (HW-BRKT-3.5) APPROX: 30" WIDE X 60" HIGH IMAGE: CUSTOM				
2			\$584.99	\$1,169.98
ART ELEMENT AW-10 TO AW-21: SOFFIT ART LAYER 1: DIRECT PRINT ON 12MM PVC (HW-WALL-CON) APPROX: 60" WIDE X 18" HIGH x 12" DEEP IMAGE: CUSTOM				
12			\$788.07	\$9,456.81
ART ELEMENT AW-22 & AW-23: VINYL CLINGS INDUSTRIAL STRENGTH "PRINT EASY" VINYL APPROX: PER PLAN DIMENSIONS IMAGE: PAW; FLAME				
1			\$3,373.45	\$3,373.45
PRODUCT TOTAL				\$25,084.89
FIELD SERVICE				
PAINT			\$16,107.38	\$16,107.38
DELIVERY			\$758.83	\$758.83
INSTALLATION			\$4,200.00	\$4,200.00
CONTRACT TOTAL				\$46,151.11