

General Fund | Dashboard Summary

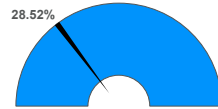
For the Period Ending October 31, 2019

Fund 199

Projected Year End Fund Balance
as % of Budgeted Revenues

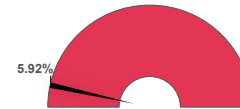


Actual YTD Revenues



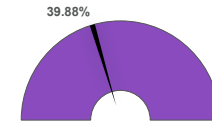
Projected YTD Revenues
57.64%

Actual YTD Local Sources



Projected YTD Local Sources
4.39%

Actual YTD State Sources



Projected YTD State Sources
84.39%

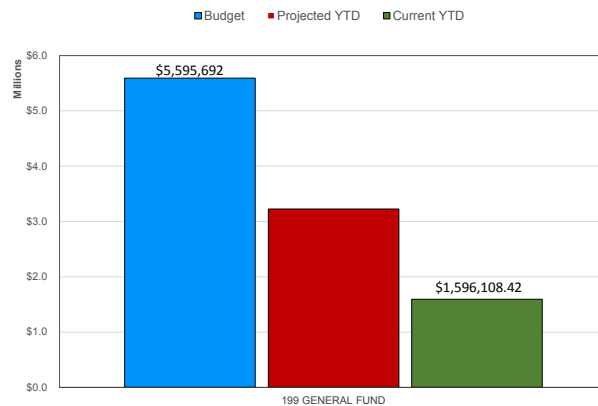
Revenue Analysis

Top 10 Sources of Revenue by Object (YTD)

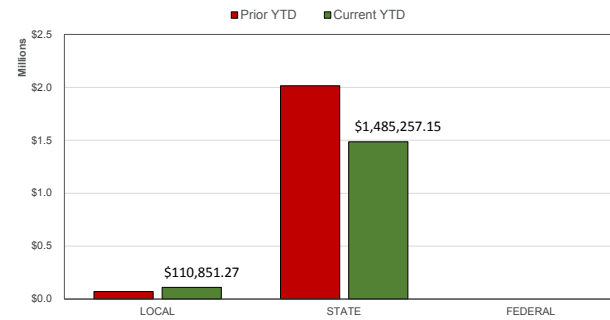
Foundation Entitlements	\$1,386,296
Trs/Trs Care On-Behalf Payment	\$72,650
Taxes, Prior Years	\$71,204
Per Capita Apportionment	\$19,219
Penalties-Interest-Oth Tax Rev	\$8,328
Rent	\$8,300
Sp Ed Funds	\$7,092
Earnings Temp Deposits/Invest	\$6,936
Athletic Activity	\$6,438
Other Revenues From Local	\$4,822

Percent of Total Revenues YTD **99.70%**

Revenues by Fund | Budget / Projected YTD / Current YTD



Revenue by Source | Prior YTD vs. Current YTD



Revenue by Source | Projected YTD vs. Current YTD

