

Pleasantdale Elementary School
8100 School Street
La Grange, IL 60525
708.246.4700 Fax: 708.246.4625



Pleasantdale Middle School
7450 S. Wolf Road
Burr Ridge, IL 60527
708.246.3210 Fax: 708.352.0092

Pleasantdale School District 107 | 7450 S. Wolf Road | Burr Ridge, IL 60527 | 708.784.2013 | Fax: 708.246.0161 | www.d107.org

To: Dr. Dave Palzet, Superintendent

From: Griffin L. Sonntag, Assistant Superintendent for Finance and Operations

Date: February 12, 2025

Subject: Solar Power Purchase Agreement (PPA) Proposal

Overview:

IGS Solar has proposed installing a 297 kW (DC) solar array at Pleasantdale Middle School. The system is projected to generate 336,528 kWh annually, covering approximately 51% of the school's current energy consumption (660,607 kWh/year).

Key Terms of the PPA:

- **Rate:** \$0.0950/kWh (fixed for 25 years)
- **Annual Production:** 336,528 kWh
- **Current Utility Rate:** \$0.1134/kWh (with a 2% estimated annual escalation)
- **PPA Term:** 25 years
- **No Upfront Costs:** IGS Solar owns, maintains, and operates the system

Financial Benefits & Total Savings Over 25 Years:

- **Annual Cost Savings:** Immediate reduction in electricity costs, starting with approximately \$6,192 in Year 1.
- **Cumulative Savings:**
 - \$135,585 saved by Year 10
 - \$288,848 saved by Year 17
 - Total projected savings of **\$521,567** by Year 25
- **Avoided Utility Cost Increases:** By locking in a lower energy rate, the school avoids rising utility costs, which are estimated to escalate at 2% per year.
- **Buyout Option:** Available starting Year 7, with declining purchase prices over time.

Conclusion & Next Steps:

This project presents a long-term opportunity for significant cost savings while promoting sustainability. If the PPA is approved next month, the district can move forward with planning for installation.



Proposal for:

Pleasantdale Middle School

7450 S. Wolf Rd., Burr Ridge, IL 60527

January 31, 2025

Proprietary & Confidential



Pleasantdale Middle School

7450 S. Wolf Rd., Burr Ridge, IL 60527

IGS Solar is pleased to propose the following solar array to be installed at 7450 S. Wolf Rd., Burr Ridge, IL 60527. The following information outlines the estimated size, anticipated power the array will produce, and financing/purchasing options.

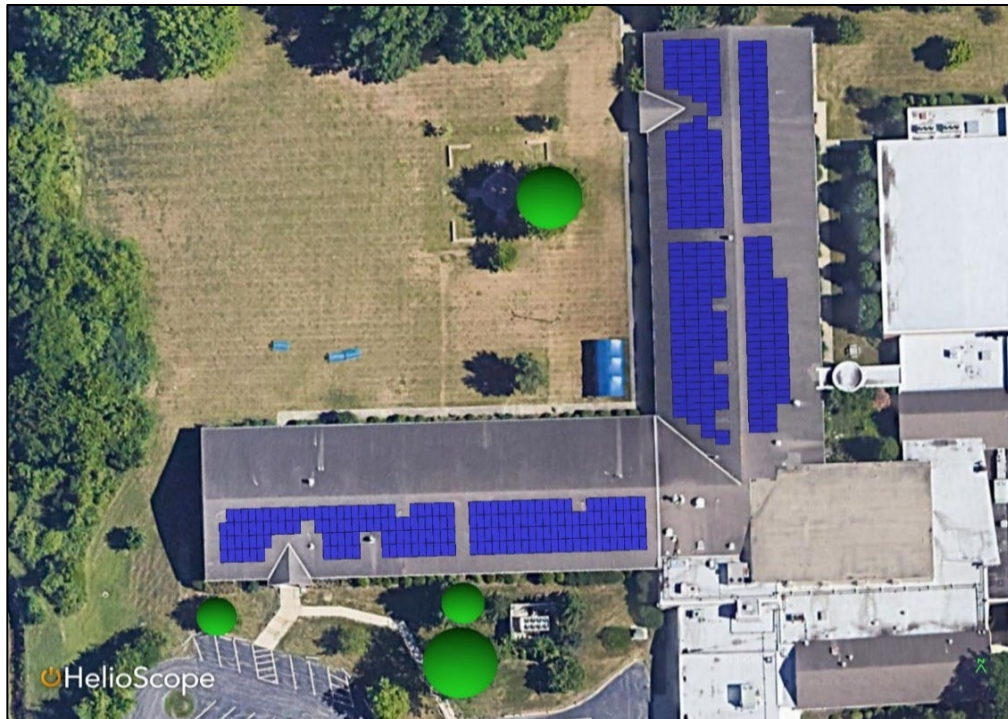
Estimated Size: 297 kW (DC)
Annual Production: 336,528 kWh/year
Current Usage: 660,607 kWh/year *this is estimated to offset your current usage by 51%*

- FINANCING OPTIONS -

Financing your new solar array has multiple options. A Power Purchase Agreement is where IGS Solar takes 100% care of the array and you pay a monthly bill. No upfront cost or maintenance. IGS owns the array long term.

Power Purchase Agreement (PPA)

PPA \$/kWh Rate:	\$0.0950	<i>Note: Interconnection has been approved for \$0</i>
Annual escalation:	0.0%	
Term of agreement:	25 years	





Pleasantdale Middle School

7450 S. Wolf Rd., Burr Ridge, IL 60527

PPA - Power Purchase Agreement

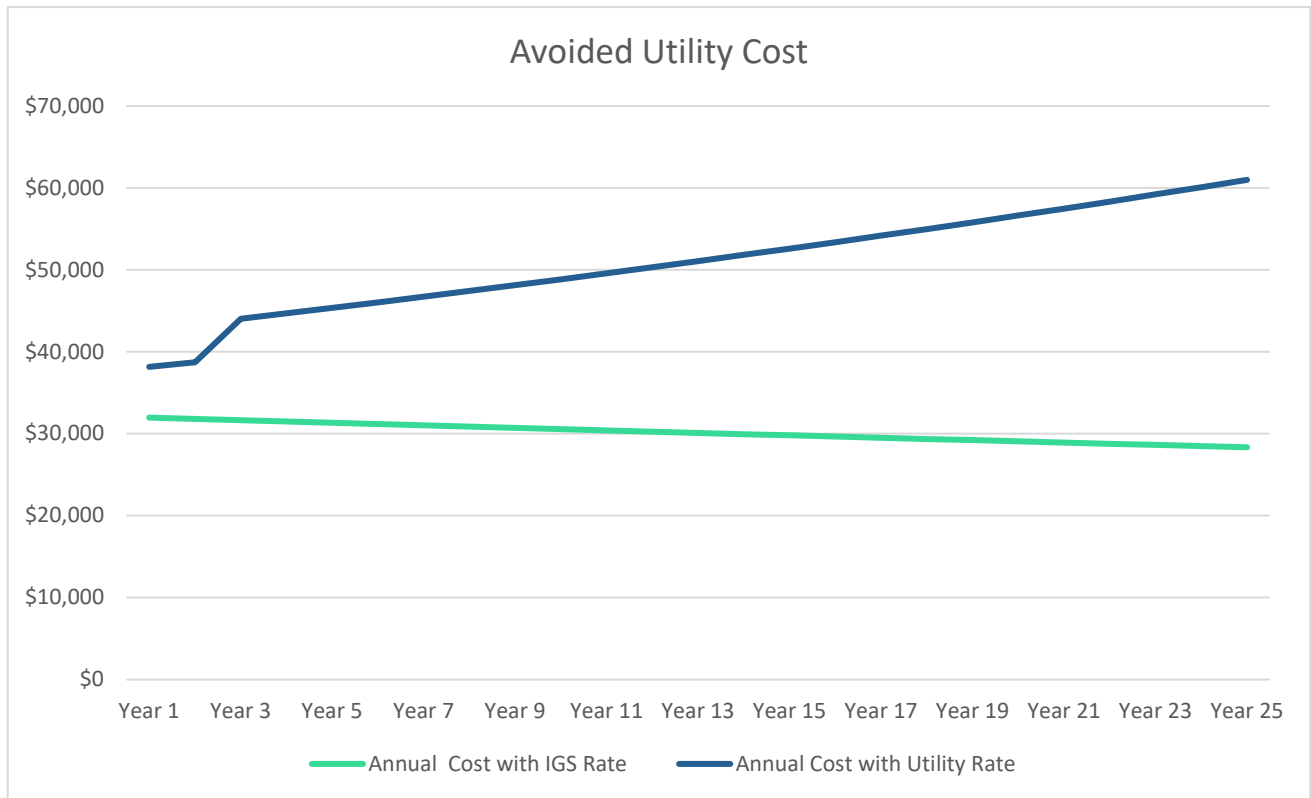
Savings Forecast

Annual Production:	336,528 kWh/year	
Current Usage:	660,607 kWh/year	
PPA Rate	\$0.0950	escalating @ 0.0%
Current Rate	\$0.1134	escalating @ 2.0% (estimated escalation value)

	Yearly Production (0.5% degradation)	IGS Offer Rate/kWh	Current Utility Rate/kWh	Annual Cost with IGS Rate	Annual Cost with Utility Rate	Annual Savings with IGS	Cumulative Annual Savings
		0.00%	2.00%				
Year 1	336,528	\$0.0950	\$0.1134	\$31,970	\$38,162	\$6,192	\$6,192
Year 2	334,845	\$0.0950	\$0.1157	\$31,810	\$38,731	\$6,921	\$13,113
Year 3	333,171	\$0.0950	\$0.1322	\$31,651	\$44,045	\$12,394	\$25,507
Year 4	331,505	\$0.0950	\$0.1348	\$31,493	\$44,701	\$13,208	\$38,715
Year 5	329,847	\$0.0950	\$0.1375	\$31,335	\$45,367	\$14,032	\$52,747
Year 6	328,198	\$0.0950	\$0.1403	\$31,179	\$46,043	\$14,865	\$67,612
Year 7	326,557	\$0.0950	\$0.1431	\$31,023	\$46,730	\$15,707	\$83,318
Year 8	324,924	\$0.0950	\$0.1460	\$30,868	\$47,426	\$16,558	\$99,876
Year 9	323,300	\$0.0950	\$0.1489	\$30,713	\$48,132	\$17,419	\$117,295
Year 10	321,683	\$0.0950	\$0.1519	\$30,560	\$48,850	\$18,290	\$135,585
Year 11	320,075	\$0.0950	\$0.1549	\$30,407	\$49,577	\$19,170	\$154,755
Year 12	318,474	\$0.0950	\$0.1580	\$30,255	\$50,316	\$20,061	\$174,816
Year 13	316,882	\$0.0950	\$0.1612	\$30,104	\$51,066	\$20,962	\$195,778
Year 14	315,298	\$0.0950	\$0.1644	\$29,953	\$51,827	\$21,873	\$217,652
Year 15	313,721	\$0.0950	\$0.1677	\$29,804	\$52,599	\$22,795	\$240,447
Year 16	312,152	\$0.0950	\$0.1710	\$29,654	\$53,383	\$23,728	\$264,176
Year 17	310,592	\$0.0950	\$0.1744	\$29,506	\$54,178	\$24,672	\$288,848
Year 18	309,039	\$0.0950	\$0.1779	\$29,359	\$54,985	\$25,627	\$314,474
Year 19	307,494	\$0.0950	\$0.1815	\$29,212	\$55,805	\$26,593	\$341,067
Year 20	305,956	\$0.0950	\$0.1851	\$29,066	\$56,636	\$27,570	\$368,637
Year 21	304,426	\$0.0950	\$0.1888	\$28,920	\$57,480	\$28,559	\$397,197
Year 22	302,904	\$0.0950	\$0.1926	\$28,776	\$58,336	\$29,561	\$426,757
Year 23	301,390	\$0.0950	\$0.1964	\$28,632	\$59,206	\$30,574	\$457,331
Year 24	299,883	\$0.0950	\$0.2004	\$28,489	\$60,088	\$31,599	\$488,930
Year 25	298,383	\$0.0950	\$0.2044	\$28,346	\$60,983	\$32,637	\$521,567

Pleasantdale Middle School

7450 S. Wolf Rd., Burr Ridge, IL 60527





Pleasantdale Middle School

7450 S. Wolf Rd., Burr Ridge, IL 60527

Buyout Schedule for PPA

Buyout Schedule

Year	Buyout Values
1	\$1,419,403
2	\$884,531
3	\$737,038
4	\$611,756
5	\$499,534
6	\$385,532
7	\$357,770
8	\$340,340
9	\$322,142
10	\$303,135
11	\$285,455
12	\$266,996
13	\$247,717
14	\$227,573
15	\$206,519
16	\$184,505
17	\$161,480
18	\$137,389
19	\$128,101
20	\$118,813
21	\$114,221
22	\$109,628
23	\$105,036
24	\$100,443
25	\$95,850

Years 1-6 are
termination values only,
system can only be
purchased day 1 of year
7 and after.