



ISD #709 Music Department Adoption

FY 18-19

Teri L. Akervik, Music Curriculum Specialist

"The Duluth Public Schools Music Department believes that music is integral to a holistic education for all students, leading to lifelong engagement in the arts."



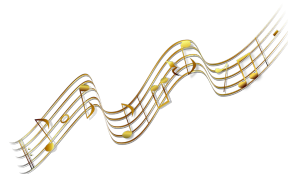
Music Adoption Committee:

- K-5: Patti Kittelson, Kristin Paschen & Regan Walsh
- 6-8 Choir: Sheila Shusterich & Ben Ellison
- 6-8 Band: Leslie Churchill & Sandy Boynton
- 6-12 Orchestra: Clare Chopp, Kevin Hoeschen & James Larson
- 9-12 Choir: Jerry Upton & Paul Christenson
- 9-12 Band: Blake Peterson & Josh LeHigh
- General Music Courses: Chad Hanson



Adoption Process:

- Develop plan, timeline, process and committee
- Meet with Music Adoption Committee to review department belief statement, standards, curriculum selection rubrics and select standards/benchmarks
- Revise curriculum assessment maps & curriculum unit documents
- Research curriculum materials (method books, text series, literature)
- Implement use of Tool for Equity Accountability (TEA), Music Materials Selection Rubric (MMSR) and Selecting Curriculum Resources (SCR) tools.
- Review current inventory of materials, instruments & equipment needs
- Create materials & equipment needs list and prioritize
- Review and recommendation - District-Wide Music Committee



Support & Community Input:

- William Howes, Education Equity Coordinator
- Edye Howes, American Indian Education Coordinator
- Joanna Walters, Dean of Students/Myers-Wilkins & District Parent
- Carla Larson, Teacher DHH & District Parent
- Dr. Wendy Barden, Perpich Center for Arts Education Music Specialist
- Technology Department Staff



Next steps:

- Adoption update to Director of Curriculum & School Board Education Committee

[2018 Draft - Minnesota State Music Standards](#)

- Finalize materials & equipment needs request
- Gather feedback from committee members, support/community group
- Recommendation to Director of Curriculum & School Board
- Implementation of Adoption
- Continue revision of common assessments, curriculum documents and lessons with additional PD time for new resources, instructional and learning strategies
- Study current music literature and resources (TEA Tool)

