

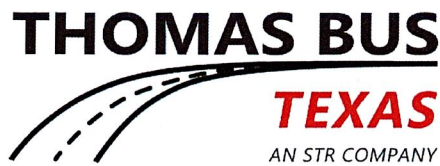


PROPOSAL # \_\_\_\_\_ Revised - NEW BUILD QUOTE (800) 475-1439 www.nationalbus.com

## ULTRA COACHLINER DXL

COMPANY	Gregory-Portland ISD	REP	Greg Pylate
CONTACT	Crystal Tyler	DATE	11/24/25
ADDRESS	1200 Broadway Blvd	CHASSIS	Freightliner M2 106 Plus
CITY	Portland	VIN	
STATE/ZIP	TX 78374	CAPACITY	56
PHONE	361-777-4254 x2110	INTERIOR	BLACK
EMAIL	ctyler@g-pisd.org	EXTERIOR	WHITE
FREIGHTLINER CHASSIS WARRANTY		CHASSIS SPECS	
BASIC CHASSIS 2YRS UNLIMITED		FREIGHTLINER M2 106 PLUS GVWR: 37,320 LBS.	
FRAME 5YRS/UNLIMITED		9L CUMMINS DIESEL ISB 350HP - 1,050 FT LBS TORQUE	
ENGINE 2YRS/250,000 MILES		300 AMP ALTERNATOR	
TRANSMISSION 3YRS/ UNLIMITED		ALLISON 3000 AUTO TRANSMISSION	
AXLES 4YRS/ UNLIMITED		PROGRAMMABLE FAST IDLE CONTROL	
CONVERSION WARRANTY/3YRS/36,000 LIMITED WARRANTY		ENGINE BLOCK HEATER, LIMITED SLIP AXLE	
		ADJUSTABLE FRONT AND REAR AIR-RIDE SUSPENSION	
INTERIOR CONFIGURATION		KNEELING CAPABILITY	
AIRCRAFT STYLE WINDOW POST COVER TREATMENT		RIDE CONTROL STABILIZATION SYSTEM	
POLISHED STAINLESS STEEL ENTRY GRAB RAILS		SMOOTH-RIDE CONTROL SYSTEM FOR THE DRIVER'S AIR SEAT	
MODESTY PANEL AT ENTRANCE DOOR		100 GALLON FUEL TANK	
ALTRO TRANSIT WOOD PATTERN FLOORING		13 GALLON DIESEL EXHAUSTED FLUID TANK	
EURO RACKS W/ READING LIGHTS/ACCENT LIGHTING		ALCOA ALUMINUM ALLOY DUAL REAR WHEELS	
LED STEPWELL LIGHTS W/AUTO OPERATION W/DOOR		PAYLOAD PLUS PACKAGE	
LED INTERIOR LIGHTS		HEAVY DUTY CHASSIS BATTERY WITH ADDITIONAL BATTERY	
LED CEILING SPOT LIGHTING SYSTEM		DAYTIME RUNNING LIGHTS	
3/4" DURAGUARD PLUS UNDERLAYMENT COMPOSITE FLOORING TO		TILT/CRUISE CONTROL	
FLOORING TO RESIST MOLD/MILDEW/FIRE			
RGB CEILING LIGHTING SYSTEM			
		ELECTRICAL AUDIO/VIDEO	
SAFETY FEATURES		PREMIUM AM/FM/DVD/USB/INPUTS STEREO WITH PA	
6x EMERGENCY EGRESS WINDOWS WITH RED LED		BACKUP CAMERA & BACKUP ALARM	
2x EMERGENCY ROOF ESCAPE HATCH		110VOLT W/USB IN EVERY ROW	
EMERGENCY DOOR EXIT RELEASE		TWO 19" MONITORS WITH FRONT WINDOW VIEW	
FIRST AID KIT		FRONT VIEW CAMERA ON ALL REAR TV MONITORS	
5lb FIRE EXTINGUISHER W/EMERGENCY TRIANGLE KIT		FOUR EXTERIOR FLOOD LIGHTS	
PRECISION LASER CUT BODY STEEL CAGE FRAMING			
HIGH STRENGTH STEEL UTILIZED IN CAGING		EXTERIOR	
MULTIPLE DRIVE SHAFT GUARDS		ALCOA ALUMINUM WHEELS	
		LED EXTERIOR LIGHTS	
SEATING		EPOXY THE ENTIRE FLOOR FRAME FOR RUST PREVENTION	
19" WIDE HIGH COMFORT SEATS W/ARMREST AND TRAY		REAR VIEW WINDOW WITH POWER SHADE	
UNDERSEAT RETRACTABLE 3 PT SEAT BELTS		POWER ENTRY STEP	
DUAL ARMRESTS		PLUG-STYLE DOOR	
RECLINER ON ALL SEATS EXCEPT BACK ROW		TINTED FLUSH FRAMELESS WINDOWS	
HIGH BACK AIR SUSPENSION DRIVERS SEAT		POWER SIDE VIEW MIRRORS (HEATED)	
		PASSENGER SIDE UNDERBODY LUGGAGE W/THREE DOORS	
		REAR PASS-THROUGH UNDERBODY LUGGAGE BAY	
		DRIVERS SIDE UNDERBODY LUGGAGE W/TWO DOORS	
HEATING & COOLING HVAC		CUSTOM GRAPHICS PACKAGE - UP TO \$30K BASED ON COVERAGE	
8 FAN ROOF TOP CONDENSER			
257,000 BTU A/C SYSTEM W/BLOWERS - HD BEAST PLUS		AVAILABLE OPTIONS	
HEATER COILS BUILT INTO A/C SYSTEM		"GP" LOGO STITCHING IN SEAT HEADREST - \$4,500	
DUAL TM-31 HD A/C COMPRESSORS		LED HEADLIGHTS - \$2,000	
DUCTED A/C RACK		LG. FRONT GRILL GUARD - \$3,600	
HIGHER R-VALUE PREMIUM INSULATION PACKAGE		2ND REI STEREO WITH DVD/BT/PA & HDMI PORT - \$900	
CERAMIC WINDOW COATING			
TOTAL PRICE		\$463,612.00	
DELIVERY		FOB - TULSA, OK	
QTY:		2	
TRADE-IN		N/A	
		TIPS #230204	
TOTAL COST		\$927,224.00	
		PRICING GOOD FOR 15 DAYS - SUBJECT TO AVAILABILITY	
Initials: _____		BUS MANUFACTURERS/DEALERS RESERVE THE RIGHT TO ADD TARIFFS UP TO 3% AT THE TIME OF BUS COMPLETION DEPENDENT UPON THE IMPLEMENTATION OF TARIFFS ON IMPORTS AND THE US/AFTA TRADE AGREEMENTS.	





# Customer Quotation

**Prepared For:**

GREGORY-PORTLAND I.S.D.  
308 N GREGORY ST  
GREGORY, TX 78359

**Prepared By :**

Harry Hughes  
Thomas Bus Texas  
(832)216-8228  
Harry.Hughes@ThomasBusTexas.com

**Quote Number:**  
418211

**Quote Date:**  
9/26/2025

**Customer Order No:**  
GPISD 78

## Model Profile: Saf-T-Liner C2 341TS

Product Type:	School Transportation
Year:	2026
Chassis Model:	B2 106
Chassis MFG:	FLNER
GVWR:	GVWR
Passenger Capacity:	78
Headroom:	78
Wheelbase:	279
Brake Type:	AIR
Engine Type:	CUMMINS B6.7 220 DIESEL, 6 Cyl, 220 HP, 2600 RPM
Fuel Type:	DIESEL
Fuel Tank Capacity:	100
Transmission Type:	AUTOMATIC
Axle, Front:	10000-lb Capacity
Axle, Rear:	23000-lb Capacity
Tires, Front:	FRONT HANKOOK AH24 11R22.5 14 PLY TIRES
Tires, Rear:	REAR HANKOOK AH24 11R22.5 14 PLY TIRES

**Includes the Following Equipment:**

### BODY

#### ACCESSORIES

- 1 VISOR-TINTED DRIVER'S SIDE WINDOW 6"X18"
- 1 LOCKS-KEYED ALIKE #CH545
- 1 LOCK-DRVR'S INTR STORAGE OVR DRV'S HEADER W/O INTRLK CH545

#### CERTIFICATION/SAFETY

- 1 REFLECTTAPE-RR END YEL 2"
- 4 REFLECTTAPE-P/O WDO YEL
- 1 REFLECTIVE TAPE-EMERGENCY DOOR REAR YELLOW
- 1 REFLECTTAPE-SI 2" ABV FLR YEL
- 1 FIRE EXTINGUISHER-5 3A-40BC
- 1 REFLECTORS-AMBER (4) MID/FRONT 3"
- 1 REFLECTORS-RED (4) RR/RR SI 3"
- 1 ELECTRICAL-ROOF ESCAPE HATCH POS 3
- 1 HANDLES-W/S SERVICE, BLACK
- 1 KIT,FIRST AID 24 UNIT TEX.
- 1 KIT - BODY FLUID CLEAN-UP NATIONAL STANDARDS
- 1 LABEL-PASS ADVISOR INSTRUCTION
- 1 LOCATION-VESTIBULE FLOOR PLATE LEFT 5LB FE
- 1 LOC-VEST.FLR.AFT REFL.TRIANGLE BRACKET TEXAS
- 1 CUTTER-SEAT BELT W/HAND GRIP
- 1 TRIANGLES-REFL. 3 W/BOX
- 1 BRACKET,MTG. REFL. TRIANGLES
- 1 OPEN VIEW-ES, NON-HTD, RMT,SS
- 1 MIR-B EXT.CROSSVIEW SS.BRKT
- 1 MIRROR-INT 6"X30" CAMERA & LEVER
- 1 LABEL(S)-SPECIAL DATA, TX
- 1 LABEL-VEHICLE CERTIFICATION

- 1 DOMICILED USA-EXCLUDING CALIFORNIA AND CARB OPT-IN STATES

## **DOORS**

- 1 STEP-RS ALUM.ENT.DR 8.75"RISER
- 1 HANDLE-INT RR DR BLACK
- 1 HANDLE-EXTERIOR REAR DOOR WITH RECESS
- 1 VANDALOCK-REAR DOOR W/BOLT
- 1 DOOR-ENT AG2 TINT LAM LOCK
- 1 POWER SYSTEM-AG2 AIR ENTRANCE DOOR
- 1 VANDALOCK-ALUM.ENT.DR.CYLINDER W/KEY
- 1 PULL-ENTRANCE DOOR, EXTERNAL ALUMINUM
- 1 TRIM-ENTRANCE DOOR INTERIOR
- 1 PAD-DR HEADER, RR EMER 36"W
- 1 TREAD-STEP ALUMINUM ENTRANCE DOOR BLACK KORSEAL W/PEB NOSING
- 1 TRIM-STEPWELL HORIZONTAL WITH RIBBED NOSE
- 1 RAIL-ASSIST FRONT ENTRANCE DOOR RIGHT SIDE 1"OD

## **ELECTRICAL - BODY**

- 1 FAN-CIRC DRV'S WDO HDR BLACK
- 1 RADIO-AM/FM DEA510 W/PAGE
- 1 Elec-Park Brake Interlock
- 1 MONITOR-LPS WARN CEEA+
- 1 OPER-MONITOR LPS WARN ONLY CEEA+
- 1 LPS-DOME OVER DRIVER LED
- 1 LPS-DOME PASS MEDIUM LED () 341T
- 1 LPS-STP/TAIL/DIR AMBER/REV LED
- 1 ADVISORY-PASSENGER BUZZER ACTIVATION, WITH SWITCH
- 1 OPER-NOISE SUPP ON/OFF
- 1 LPS-LIC PLATE ILLUMINATION LED
- 1 LPS-SI DIR AMBER FRT. LED PIN
- 1 LPS-WARNING LED STROBE (8)
- 1 LPS-ID AMB/RED LED
- 1 LPS-MKR ROOF FRT/RR LED PIN
- 1 LPS-MKR ROOF MID LED PIN
- 1 STROBE-ECCO 7460CC 6' FROM REAR
- 1 LPS- STOP/TAIL 4" FLS.MT L.E.D.
- 1 LPS-SI DIR RED LED PIN RR.AXLE
- 1 Elec-Cable Prim Pwr & Gnd
- 2 LPS-STORAGE BOX SINGLE
- 1 LPS-STORAGE BOX DOUBLE
- 1 LAYOUT-ROCKER SWITCH STANDARD
- 1 LPS-ID SIGN FRONT/REAR
- 1 ELEC-PV 360 CAM STOP/TAIL/TURN
- 1 Elec-Noise Suppression
- 1 Elec-Transmission Inhibit
- 1 OPER-ALTERNATING HEADLAMPS
- 1 ELEC-LUGG.COMPT.LPS.PWR
- 1 SPEAKERS-INT. 30 WAT.(6) 341T
- 1 DOME LPS - MEDIUM
- 1 112DB BACKUP ALARM

## **EXTERIOR**

- 1 FLAPS-MUD, FRONT 16"W X 12"H
- 1 STEPS-EXT W/S SERVICE
- 1 FENDER-QUARTER 24" BATTERY BOX DOOR
- 1 BODY ADJUSTMENT-FREIGHTLINER, BTR RS FUEL FILL LOCATION
- 1 REINFORCEMENT-FRAME 24" BATTERY DOOR AND A/C
- 1 CAP-ENTRANCE DOOR STANDARD
- 1 FLOOR-NON ADA
- 1 LATCH-UNDERBODY COMPARTMENT 30/60 LOCK 2ND RIGHT SIDE
- 1 BUMPER-REAR 2 BRACES NO EXHAUST HOLE
- 1 SKT.FWD.STPWLL LO DEF
- 1 CAP-FRT ROOF VENT W/WARN.LPS.
- 1 CAP-REAR ROOF W/WARN.LPS.
- 1 GUSSET-21"H LWR SIDE SHEET
- 1 SHEET-LWR, L MID 20G,21"
- 1 SHEET-LWR,L RR 20G,21"

- 1 SHEET-LWR,R MID 20G,21"
- 1 SHEET-LWR,R RR 20G,BOX FWD 341
- 1 DOOR-U/B L BATTERY 24"
- 1 DOOR-FUEL FILL ACCESS BTR
- 1 FENDERETTE, STEEL, 21" BOX RS
- 1 LATCH-BATT DOOR NON-LOCKING
- 1 LATCH-FUEL FILL ACCESS (THUMB)
- 1 RS STORAGE BOX 1 - 100" WIDE
- 1 RS STORAGE BOX 2 - 60" WIDE
- 1 VENT-STATIC PRESENT
- 1 PILASTER - 341T, 900
- 1 LATCH-NON-LOCKING DEF ACCESS DOOR
- 1 RAIL-SNOW RAIL PRESENT
- 1 HARDWARE-MOUNTING CLIPS STANDARD

## **HVAC**

- 1 NO 3RD A/C EVAPORATOR
- 1 AC-126K BTU-FREE BLOW BULKHEAD
- 1 AIR CONDITIONING CONTROLS-STANDARD
- 1 CONDENSER- CM3 (2)
- 1 EVAP - IW10 RR, IW4 FRONT
- 1 PLUMB.-AC COMP DUAL ISB
- 1 AC CTL.BD.STD.TIE IN SGL.LOOP
- 1 PLUMBING-IW10, IW4
- 1 CABLE-EVAP 2 FRT BULKHEAD
- 1 HTR-U/S LS 84,000 BTU LOC 10
- 1 HOSE-HTR BLUSTRIP W/ W/H POS 10
- 1 CLAMPS-UNDERSEAT HEATER CONSTANT TORQUE
- 1 LOCATION-EVAP NO2 FRONT BULKHEAD
- 1 ADDL AUX LINES W/MANIFOLD PLUMBING AND COMBINED SHUTOFF
- 1 PLASTIC COOLANT BOOSTER PUMP WITH AUTOMATIC CONTROL
- 1 HEATER, DEFROSTER,AND AIR COND
- 1 BODY BUILDER SUPPLIED PLUMBING W/ACCESS HOLES IN FRAME RAIL
- 1 AUXILLARY HEATER PLUMBING WITH BODY SOLENOID SHUTOFF

## **INTERIOR**

- 1 VISOR-WINDSHIELD SUN 6"X30" TINTED
- 1 DOOR-STORAGE BOX W/O GLASS
- 1 TRIM-LOWER REAR HEATER NO A/C
- 1 FLOOR-GALVALUME STEEL MID BODY
- 1 REINF-RR END A/C EVAP. IW10
- 1 REINFORCEMENT-REAR STOP SIGNAL 40"
- 1 REINF-FRONT A/C EVAP.
- 1 BTR FUEL FILL RECESS, W/DOOR
- 1 BULKHEAD-RR END INT.W-A/C IW10
- 1 COVER-TRIM DRVS HDR W/STORAGE
- 1 COVER-TRIM FRT END W/S HEADER A/C
- 1 FLR-BLK VINYL W/13" CTR AISLE 341T
- 1 FLR-BLK WHEELHOUSE AND HEATER
- 1 INSULATION-FRT BULKHEAD W/ACRSY 2"POLY
- 1 H/L-1ST WDO SEC ACOUS GRY 341T
- 1 INSULATION - RAFTER CAVITY 341T
- 1 MAT, FLOOR VESTIBULE CEEA+
- 1 Trim - Interior Dash Fwd.
- 1 TUBE-FILL BTR & OVERFLOW HOSE
- 1 CAP-FUEL FILL BTR NON-LOCKING

## **MISC**

- 1 PDI IDENTIFIER-DEALER PERFORMED
- 1 CONDENSER ALERT - PRESENT SHORT
- 1 APPLICATION - SCHOOL
- 1 70 MPH ROAD SPEED LIMIT
- 1 SAF-T-LINER C2

## **PAINT/LETTERING**

- 1 DECAL-UNITED AUTO WORKERS
- 38 LETTERING - 6" HIGH
- 1 LOGO-OMIT THOMAS DECALS



- 4 LABEL-P/O WDO EMER EXIT 2" BLACK
- 1 LABEL-ENGLISH AG2.AIR.ENT DR
- 1 DECAL-BACKING ALARM
- 1 DECAL-LOW SULFUR FUEL
- 1 LABEL-RR DR EMERGENCY DOOR 2"HIGH
- 1 DECAL-ENTRANCE DOOR VANDALOCK ENGLISH
- 1 LABEL-RR EMERGENCY DOOR INSTRUCTION
- 1 LABEL-"DEF ONLY"
- 1 LABEL-REGENERATION WARNING 2010/2013 EPA ENGLISH
- 1 PAINT-EXT HNDL(S) BLACK
- 1 DECAL-"DIESEL"
- 1 PAINT-EXTERIOR ROOF WHITE 341T
- 1 PAINT-EXT WDO AREA SAME AS BODY
- 1 PAINT-EXT GRD RAIL @ WINDOW BLACK
- 1 PAINT-EXT GRD RAIL @ SEAT BLACK
- 1 PAINT-EXT GRD RAIL @ FLOOR BLACK
- 1 PAINT-EXT GRD RAIL @ SKRT BLACK
- 1 PAINT-EXT BUMPER REAR BLACK
- 1 PAINT-BLACK TRIM-FRONT/REAR ROOF CAPS
- 1 DECALS-SIDE SHEET REFL "SCHOOL BUS"
- 1 PAINT-SOLID COLOR YELLOW
- 1 DECAL-APPROVED FUEL TYPE
- 1 HEADLINING-VESTIBULE ACOUSTIC, GRAY, DRIVER LAMP
- 1 LABEL-AIR CONDITIONING SPECIFICATION TEXAS
- 1 PAINT:ONE SOLID COLOR,BASE/CLEARCOAT
- 1 CAB COLOR A:L5898EB SCHOOL BUS YELLOW ELITE BC

## **SEATS**

- 1 SEAT BELT - DRIVERS SEAT
- 1 39" BARR-VERT,WALL MT 45"H RS 2009
- 1 39"8DEG BARR-REV. WALL-MT 45"H 2009
- 2 PRO GRA/BLK UPH-45"H RECESSED BARRIER
- 1 RAIL-ASSIST FRT ENT DR 39"W
- 1 BACK-NATIONAL DRV'S SEAT
- 1 ARMREST NATIONAL DRV'R'S ST. BOTH SIDES
- 1 UPH DR.ST.PRO BLK NATIONAL
- 1 PEDESTAL-NATIONAL AIR W/2 SHOCKS
- 1 KICKPLATE-MOD.PANEL RS 39" IW4
- 1 RISER-DRIVERS SEAT, NATIONAL
- 26 FIREBLOCK GRAY/BLACK UPHOLSTERY - IMMI SBR PASSENGER SEAT
- 1 HARDWARE-SBR WALL MOUNT C2/MINO
- 13 IMMI SBR 39" LS WALL MNT 3PT 3POS
- 13 IMMI SBR 39" RS WALL MNT 3PT 3POS

## **WINDOWS/GLASS**

- 1 GLASS-WINDSHIELD ONE PIECE WITH TINTED BAND
- 1 GLASS-RS FRT STAT TNT LAM
- 1 GLASS-LS FRT STAT TNT LAM
- 1 GLASS-RR STAT TINTED LAMINATED
- 1 FRAME-WDO SPLIT
- 16 FRAME-WDO SPLIT 30"W
- 2 FRAME-WDO SPLIT 40"W
- 2 FRAME-WDO P/O VERT LAM TINT LS
- 2 FRAME-WDO P/O VERT LAM TINT RS
- 16 GLASS-WDO TINT LAM 30"
- 2 GLASS-WDO TINT LAM 40"
- 1 STOPS-WDO 12"
- 1 GLASS-LOWER REAR DOOR LAMINATED TINTED
- 1 GLASS-UPPER REAR DOOR LAMINATED TINT
- 1 WDO-DRIVER'S LAM TINT

## **OTHER**

- 1 2022 PIP INCENTIVE
- 1 LOGO-FRT RS & RR
- 1 SWITCH-RKR DEST.SIGN
- 1 ELEC-FAN DRV'S WDO HDR
- 1 HATCH-RF ESC SPEC ADVANTAGE H1976-015-131 ENGLISH GRAY (2)

- 1 ELEC-RF ESC HATCH POS 9
- 1 ARM ASSEMBLY-WINDSHIELD WIPER (2)
- 1 ELEC-ROOF HATCH - P/O WDO
- 1 OPER-FAN DRV'S WDO HDR
- 1 OPER-ALARM BACKING W/REV.
- 1 OPER-ROOF HATCH BUZZER
- 1 Evap Trim-Int(2) IW10, IW4
- 1 OPER-A/C CONTROL- STANDARD L.H.
- 1 OPER-ID SIGN,FRONT & OR REAR
- 1 ELEC-ID SIGN FRT/ REAR 341T
- 1 LOCATION-VESTIBULE FLOOR PLATE CENTER 24 FAK
- 1 LOC-VEST.FLR.PLT.FWD. 10 BFC
- 1 ANTENNA - RADIO SWIVEL BASE
- 1 ELEC-ANTENNA RADIO COAXIAL
- 1 KIT-RADIO ANTENNA MOUNTING @ DRIVER'S HEADER
- 1 Manual-Drvr's/Maint.English
- 1 ELEC-NO ZONAR MONITORING
- 1 ELEC-BACKING CAMERA
- 1 ALERT-6.7L CONDENSER SHORT
- 1 Elec-AC Digital Signal
- 1 Elec-Aux BCA Power Cable
- 1 BCA-Aux w/o Contactor
- 1 341T30\_N
- 1 TRIM-A POST
- 1 WHEELHOUSES-REAR L&R
- 1 STRINGER-ROOF 341T
- 1 FRONT END FRAME
- 1 FRT END FRAME MTG KIT
- 1 REAR END FRAME-28.68"DEEP
- 1 LOC-40" RAF SP 11TH 341T
- 1 TRIM-REAR DOOR
- 1 ELEC-AG2 AIR OP.ENT. DOOR
- 1 HINGES-REAR DOOR PIN TYPE
- 1 LATCH-SINGLE-POINT, REAR EMERGENCY DOOR
- 1 STOP-DOOR REAR EMERGENCY, 1-POS
- 1 OPER-DOOR AIR ENT.W/ BAT.2 POS.
- 1 OPER-VANDLCK.ENT./ EMERDR(S)W/PLT.LPS
- 1 OPER-DR.RR.EMG.W/BUZ
- 1 ELEC-EMERG/EXIT DOORS
- 1 INT COLOR -RR DOOR GRAY
- 1 SWITCH-PAD. ENT.DOOR AIR.
- 1 OPER-LPS(S) LUGG.COMPT,DOOR.ACT.
- 1 DOOR, REAR EMERGENCY
- 1 LATCH-STORAGE COMPARTMENT 100 LOCK RIGHT SIDE 1ST
- 1 THRESHOLD REAR EMERGENCY DOOR
- 1 ELEC-DRIVER'S DOME LPS
- 1 ELEC-PASS DOME LPS MEDIUM ()
- 1 SWITCH-RKR DOME LPS ALL
- 1 Module-Pwr.Dist.Elec.Sys.
- 1 SWITCH-RKR PANEL LPS DIM
- 1 OPER-SWITCH, PANEL LPS DIMMER
- 1 OPER-STEPWLL LPSW/PARKLPS&ENT DR.
- 1 LPS-STPWLL LED (1)
- 1 ELEC-PASSENGER ADVISORY
- 1 OPER-PASS ADV IGN/WARN/BUZZER
- 1 SWITCH-RKR FAN DEFROST L.S.
- 1 BUZZER-SWITCH PANEL 1 TONE
- 1 LPS-PILOT VANDALOCK STATUS RED
- 1 ELEC-PWR, GND, NETWORK, BUZZ
- 1 ELEC-LPS WARNING, 8 LPS
- 1 OPER-LPS, DOME RS ENT DR
- 1 LPS-PILOT POST TRIP INSP RED
- 1 OPER-LPS BODY TAIL W/PARK SW.
- 1 ELEC-LPS SI DIRECTIONAL 341T
- 1 OPER-LPS WARNING (8) PKG 17



- 1 OPER-LPS REV.W/RR EMG.DR.OPEN
- 1 ELEC-LPS ID/MKR PARK/SW.
- 1 SWITCH-RKR DOME LPS DRVR.ON/OFF
- 1 ELEC-LPS STROBE 6' FROM RR
- 1 SWITCH-RKR NOISE SUPPR ON/OFF
- 1 OPER-DRVR'S DOME LPS ON/OFF
- 1 OPER-HTR BOOSTER PUMP AUTOMATIC
- 1 OPER-LPS SERVICE BRAKE
- 1 OPER-SW.ID/MARK LPS W/PARK
- 1 SWITCH-RKR STROBE LPS
- 1 OPER-LPS DOME (1)ON/OFF
- 1 OPER-LPS REVERSE
- 1 ELEC-(2) SWITCH BANK
- 1 LPS-PILOT WARN LGTS RED
- 1 LPS-PILOT WARN LGTS AMBER
- 1 SWITCH-RKR WARN LPS OVERRIDE ON/OFF
- 1 SWITCH-WARN LPS ON/AMB ACT.
- 1 OPER-LPS STROBE, IGN & SW ACTIV
- 1 SWITCH-RKR A/C FAN SPD.
- 1 CABLE-EVAPORATOR 1 POWER SUPPLY STANDARD
- 1 SWITCH-RKR A/C ON
- 1 ELEC-HARNESS COMP ASM
- 1 OPER-LPS DIR./HAZ.
- 1 OPER-LPS SIDE DIRECT.ONLY
- 1 Block-PDM Customer Access
- 1 OPER-PRE-TRIP INSPECTION
- 1 LPS-EXT, OVER RS ENT DR LONG
- 1 OPER-LPS EXT, OVER RS ENT DR
- 1 ELEC-LPS EXT, OVER RS ENT DR
- 1 ELEC-SEAT BELT PILOT LAMP
- 1 OPER-SEAT BELT PILOT LAMP
- 1 SWITCH-STORAGE BOX
- 1 Elec-Stepwell Lamp
- 1 Elec-Standard Switch Interface
- 1 Elec-Heater Booster Pump
- 1 Oper-Buzzer, Switch Panel Tone
- 1 Starpoint-Junction Block
- 1 ELEC-MIR A NH & RC
- 1 SIGN-STOP, ELECTRIC FRONT FISA STROBE
- 1 SIGN-STOP, ELECTRIC REAR FISA STROBE
- 1 ELEC-ELECTRIC STOP SIGN FRT
- 1 ELECTRICAL-ELECTRIC STOP SIGN REAR
- 1 RAIL-EXTERIOR GUARD @ WINDOW,SEAT,FLOOR,SKIRT
- 1 RAIL-EXT GRD @ SEAT FRT END LS
- 1 TRIM-FRT CAP RS/LS
- 1 PANELS-EXTERIOR REAR
- 1 SHEET-DRIVERS EXTERIOR 20 GA.
- 1 SHEET-UPPER SIDE EXTERIOR
- 1 UNDERCOATING-ASPHALT EMULSION
- 1 HEADERS-WINDOW INTERIOR 341T
- 1 PANELS-REAR END INTERIOR REAR GALVALUME
- 1 Panels-Rr End Int Si Long w/sld.pnl.
- 1 PANELS-ACCESS RR GRAY PASS ADVISORY
- 1 COVER-HARNESS ACCESS@HDR
- 1 COVER-ACCESS FRT END HARNESS
- 1 COVER-TRIM FRT ENT.ALUM.DR HDR.AIR.OP.
- 1 HEADLINING-REAR LONG SMOOTH, GRAY
- 1 STRIPS - AISLE, SNAP-IN BLACK
- 1 Fir-Plywood 5/8" 341T
- 1 COVER-FUEL SENDING INSPECTION
- 1 Molding-Shoe
- 1 ELEC- (6) INT SPEAKERS 341T
- 1 SWITCH-RKR HTR UNDERSEAT 2ND
- 1 ELEC-HTR U/ SEAT POS.10
- 1 RAIL-SEAT

- 1 Lining-Side Int.
- 1 CABINET-SW, FWD
- 1 CABINET-SWITCH, LWR W/O POCKET
- 1 CABINET-SWITCH, UPPER
- 1 CABINET-TOP PLATE (2 BANK)
- 1 INSULATION-VEST HEADLINING 2"
- 1 INSULATION-SIDELINING 2" POLY
- 1 INSULATION-RR BULKHEAD 2" POLY
- 1 OPER-HTR U/ SEAT LS AFT
- 1 HEADERS-WINDOW EXTERIOR 341T
- 1 LOCATION-EVAPORATOR NO1 REAR BULKHEAD
- 1 HARNESS COVER COLOR - GRAY
- 1 SPEAKER ALERT - PRESENT
- 1 HEADLINING COLOR - GREY
- 1 HDLINING TYPE-1ST WDO ACOUSTIC
- 1 INSULATION-INT LONG REAR END
- 1 PLATE-ACCELERATOR
- 1 LABEL-QR CODE
- 1 OPER-WDO P/O
- 1 PRICE ADJUSTMENT -IN COMBINATION W/001-310
- 1 DUAL SELTEC TM-21 COMPRESSORS REAR MINI STAT-O-SEAL
- 1 CRUISE CTRL-ELEC ENG,W/SWITCHES IN STEERING WHEEL
- 1 ELECTRONIC CONTROL UNIT-DASH, PARKBRAKE, INTELLIPARK
- 1 VANDALOCK,STARTER DISABLE W/ANY LOCKED EMER DR(S),LH PT LAMP
- 1 NO RADIATOR/OIL PAN GUARD
- 1 REINFORCED NYLON FUEL LINES
- 1 PAINTED FUEL TANK, PAINTED BANDS
- 1 SINGLE SUCTION AND RETURN FUEL LINES
- 1 FUEL TANK MOUNTED BETWEEN RAILS, AFT OF REAR AXLE, WITH CAGE
- 1 STAINLESS STEEL CHARGE AIR COOLER PLUMBING
- 1 REMOTE-MOUNTED SURGE TANK
- 1 BASIC WIRING SCHEMATIC,UNMOUNTED,12-VOLT NEGATIVE GROUND SYS
- 1 PAINTED BATTERY PANEL COVER
- 1 ENGINE AFTER TREATMENT DEVICE AUTOMATIC
- 1 BATTERY BOX FRAME MOUNTED
- 1 (3) DTNA 3000CCA FLOODED STARTING, 555RC THREADED STUD BATTE
- 1 BATT SHUTOFF SWITCH W/AUX CONTACT BATT BOX SMART CONTACT
- 1 INTEGRAL ELECTRONIC TURN SIGNAL FLASHER W/40A (20A PER SIDE
- 1 SELF CANCEL TURN SIGNAL SWITCH W/DIM/WASH&HAZZARD IN HANDLE
- 1 BATT ENABLED 3 AMBER INBOARD ID LAMPS,2 AMBER OUTBOARD MARKE
- 1 STROBE LAMP, IGNITION SWITCH OR LH DASH SWITCH ACTIVATED
- 1 ID SIGN(S),ILLUMINATED,LH DASH SWITCH ACTIVATED
- 1 L.E.D. WARNING SYSTEM LAMPS W/PULSING FEATURE
- 1 STANDARD BODY VISUAL WARNING,LOWER RR,REV LAMPS ON DR/OPEN
- 1 STANDARD WIRING
- 1 DRIVER'S IGNITION OPERATED DOME LP WITH ON/OFF SW
- 1 PASSENGER COMPARTMENT DOME LAMPS, IGNITION ACTIVATED
- 1 PASSENGER COMPARTMENT DOME LPS, SINGLE ON/OFF SW
- 1 STEPWELL LAMP ON WITH DOOR OPEN AND MARKER LAMPS ON
- 1 EIGHT LAMP WARNING SYSTEM,LH DASH SWITCH(S), PACKAGE 17
- 1 CURT WRIGHT 2K SERIES CAN BASED ACTUATOR WO PARK PAWL
- 1 DRIVELINE GUARD
- 1 NON-ASBESTOS FRONT BRAKE LININGS
- 1 FRONT SHOCK ABSORBERS
- 1 NON-ASBESTOS REAR BRAKE LININGS
- 1 REAR OIL SEALS
- 1 MAXION 91262 22.5 X 8.25 10 HOLE HUB PILOT 5-HAND
- 1 MAXION 91262 22.5 X 8.25 10 HOLE HUB PILOT 5-HAND
- 1 TWO QUART SEE THRU POWER STEERING RESERVOIR
- 1 STD FITTINGS POWER STEERING GEAR
- 1 POWER STEERING PUMP
- 1 4-SPOKE 18" STEERING WHEEL WITH SWITCHES
- 1 ZINC-PLATED HEXHEAD CHASSIS FASTENERS
- 1 3975MM (155") REAR FRAME OVERHANG
- 1 SQUARE END OF FRAME



- 1 BUMPER MOUNTING FOR SINGLE LICENSE PLATE
- 1 COMBINATION S/T/T/R LAMPS, LED
- 1 REAR EMERGENCY DOOR,IGNITION CONTROL,BUZZER ON W/DOOR OPEN
- 1 MAINTENANCE-FREE RUBBER BUSHINGS - FRONT SUSPENSION
- 1 CAB MOUNTING FOR HOOD AND COWL CHASSIS
- 1 MANUAL ENT DOOR LOCK/BUZZER ON W/EMERGENCY DOORS UNLATCHED
- 1 ONE GALLON WINDSHIELD WASHER RESERVOIR
- 1 SINGLE ELECTRIC WINDSHIELD WIPER MOTOR W/DELAY
- 1 MS/S2 DASH
- 1 A/C PLMBG,IW10,IW4,CM3/3,126K,B6.7,199+,B2
- 1 STANDARD HVAC DUCTING
- 1 CARBON WITH BASE BLACK ACCENT
- 1 DRIVER'S FAN,(1) MOUNTED ABOVE SIDE WINDOW
- 1 AUXILIARY BODY HEATER, UNDER SEAT, AFT
- 1 DIGITAL AUXILIARY BODY MOUNTED AC CONTROL
- 1 CONFIGURABLE INSTR PANELS W/UPPER STORAGE
- 1 DIGITAL ALARM CLOCK IN DRIVER DISPLAY
- 1 AIR PROVISIONS FOR CUSTOMER FURN DRIVERS AIR RIDE SEAT
- 1 ROOF MOUNTED VENT/ESCAPE HATCH
- 1 PUSH OUT BODY SIDE WINDOWS, BUZZER WITH WINDOW UNLATCHED
- 1 PREMIUM INSTRUMENT CLUSTER 5" TFT COLOR DISPLAY
- 1 SEPARATE PANEL LAMP DIMMER,LH DRIVER'S SWITCH PANEL
- 1 PRE/POST TRIP SYSTEM TEST
- 1 CHASSIS COWL AND HOOD ONLY
- 1 DUAL NEEDLE PRIMARY & SECONDARY AIR
- 1 STANDARD BRAKE WIRING
- 1 BUMPER: BLACK
- 1 CHASSIS: VENDOR BLACK
- 1 CEEA+ 667 ELECTRICAL ARCHITECTURE
- 1 EXPECTED GROSS VEHICLE WEIGHT CAPACITY
- 1 EXPECTED FRONT AXLE(S) LOAD
- 1 EXPECTED REAR DRIVE AXLE(S) LOAD
- 1 SCHOOL BUS SERVICE
- 1 COWL CHASSIS CONFIGURATION COMPLIES WITH SBMTC
- 1 BUS BODY WITH WHEELWELL
- 1 PASSENGER COMMODITY
- 1 100% ON-HIGHWAY (CITY) TERRAIN
- 1 DOMICILED TEXAS
- 1 THOMAS BUILT SCHOOL BUS 341T
- 1 EXT TOWING 2YR/UNLTD \$750 CAP US

## **CHASSIS**

### **AXLES AND SUSPENSIONS**

- 1 ALIGNMENT-4-WHEEL SAF-T-LINER C2
- 1 SPL100 DANA SPICER MAIN DRIVELINE
- 1 DA-F-10-3 10,000# FF1 71.5 KPI/3.74 DROP SINGLE FRONT AXLE
- 1 FRONT OIL SEALS
- 1 SYNTHETIC 75W-90 FRONT AXLE LUBE
- 1 CONMET IRON FRONT HUBS
- 1 SYNTHETIC 75W-90 REAR AXLE LUBE
- 1 DA-RS-23-4 23,000# R-SRS SINGLE REAR AXLE
- 1 5.56 REAR AXLE RATIO
- 1 IRON REAR AXLE CARRIER HOUSING
- 1 REAR SHOCK ABSORBERS - ONE AXLE
- 1 CONMET IRON REAR HUBS
- 1 9,000 LB. TAPERLEAF FRONT SUSPENSION
- 1 AIRLINER 23,000 LB. REAR SUSPENSION
- 1 COMFORT-TEC SUSPENSION
- 1 SINGLE AIR SUSPN LEVELING VALVES

### **BRAKES**

- 1 ALERT-ENHANCED STABILITY CONTROL
- 1 AIR BRAKE PACKAGE
- 1 MERITOR 15 X 4 Q+ CAM FRONT BRAKES (ROCKWELL)
- 1 HALDEX LONGSTROKE FRONT BRAKE CHAMBER
- 1 MERITOR AUTOMATIC FRONT SLACK ADJUSTERS

- 1 CONMET CAST IRON FRONT BRAKE DRUMS
- 1 MERITOR 16 1/2 X 7 Q+ CAM REAR BRAKES, DBL-ANCHOR, FAB SHOES
- 1 HALDEX, LONGSTROKE, SINGLE DRIVE AXLE, SPRING-PARK CHAMBERS
- 1 MERITOR AUTOMATIC SLACK ADJUSTERS
- 1 CONMET CAST IRON REAR BRAKE DRUMS
- 1 STEEL AIR BRAKE RESERVOIRS INSIDE FRAME RAILS
- 1 BENDIX AD-9 AIR DRYER WITH HEATER
- 1 EXTERNAL CHARGING SCHRADER VALVE
- 1 WABCO 4S/4M ABS W/TRACTION CONTROL
- 1 BENDIX INTELLIPARK E-PARK BRAKE

### **CHASSIS EQUIPMENT**

- 1 EXHAUST-LS TURNDOWN, BELOW BMPR
- 1 ANTI-FREEZE, OAT -34 DEGREE
- 1 SHIELD-EXHAUST PIPE
- 1 B2 106 CONVENTIONAL CHASSIS
- 1 SET-BACK AXLE - TRUCK
- 1 ELECTRIC GRID AIR INTAKE WARMER
- 1 NO CLUTCH PEDAL WITH NON-ADJUSTABLE
- 1 INTAKE MOUNTED AIR RESTRICTION INDICATOR WITHOUT GRADUATIONS
- 1 RIGHT HAND SIDE-FILL FUEL TANK CAP
- 1 100GALLON/378 LITER STEEL RECTANGULAR FUEL TANK, BETWEEN RAIL
- 1 HORIZ TAILPIPE, EXIT LH REAR
- 1 11.5 GALLON DEF TANK
- 1 STEERING WHL MTD HORN CONTROL
- 1 MAGNETIC ENGINE DRAIN, REAR AXLE DRAIN & FILL PLUG
- 1 EXHAUST MITIGATION DEVICE FTL 4" ID SLIP
- 1 700 CUBIC INCH MINIMUM AUXILIARY AIR
- 1 PETCOCK DRAIN VALVES ON ALL AIR TANKS
- 1 ADJUSTABLE STEERING COLUMN
- 1 TRW THP-60 POWER STEERING
- 1 7075MM (279") WHEELBASE
- 1 5/16" X 3" X 10-1/8" STEEL FRAME 120,000 PSI YIELD
- 1 1-PIECE 14" PTD STL 1/4" HD BUMPER JACK PROVISION
- 1 FRONT FRAME-MOUNTED TOW HOOKS
- 1 STANDARD DUTY HOOD MOUNTING
- 1 FIBERGLASS HOOD
- 1 HOOD MTD CHROMED PLASTIC GRILLE
- 1 ALL LOCKS KEYED THE SAME
- 1 CHROME HOOD MOUNTED AIR INTAKE GRILLE
- 1 CAB FLOOR, TOE BOARD, FIREWALL HEAT SHIELD
- 1 (2) CUPHOLDERS, LEFT HAND AND RIGHT HAND DASH
- 1 REINFORCED NYLON, FABRIC AND WIRE BRAID CHASSIS AIR LINES

### **ELECTRICAL - CHASSIS**

- 1 LN 12 VOLT 270 AMP 4949PA PAD MOUNT ALTERNATOR
- 1 PROG RPM CTRL W A/C OR 12.75V LOW VOLT AUTO HI IDLE, DASH SW
- 1 DIAGNOSTIC INTERFACE CONNECTOR, 9-PIN, S
- 1 IGNITION SWITCH CONTROLLED ENGINE STOP
- 1 ALTERNATELY FLASHING HEADLAMP SYSTEM W/BODY BUILDER ENGAGEMENT
- 1 12VOLT POWER SUPPLY LH PANEL
- 1 SOLID STATE CIRCUIT PROTECTION, PDMS WIT
- 1 STANDARD FRONT TURN SIGNAL LIGHTS
- 1 ROTARY HDLAMP SWITCH, MRKR LTS/HDLTS SW W/O FOG/RD LMPS
- 1 AMBER LED MIDSHIP TURN SIGNALS
- 1 RED LED OVER REAR WHEELS MTD TURN SIGNALS GUARD
- 1 DAYTIME RUNNING LIGHTS SET @ 100% & EXTERIOR LAMPS W/ENG RUN
- 1 LED HEADLIGHT ASS & INCANDESCENT MARKER/TURN LAMP CHROME
- 1 UTIL LAMP ABOVE ENTRANCE DOOR WITH DOOR INTERLOCK
- 1 PROVISION FOR LH/RH FRT/REAR BAGGAGE COMPT LAMPS
- 1 ELECTRONIC STABILITY CONTROL
- 1 AIR OP ENT DR, BATT CTR, RH FT DR, PASS DOME LPS ON DOOR OPEN
- 1 OFF-ON RED LS PNL
- 1 AC W/ RECIRC; ON/OFF NOISE SUPR
- 1 DUAL ELEC HORN, PASSENGER ADVISORY BUZZER ON W/IGN AND WARN
- 1 C/F J1939 RADIO W/PA
- 1 FASTEN SEAT BELT INDICATOR FOR CUSTOMER SUPPLIED SEAT BELT



- 1 ELECTRONIC SPEEDOMETER WITH SECONDARY KPH SCALE, NO ODOMETER
- 1 WARNING LAMP MONITORING-CEEA+
- 1 ENGINE AND HOUR METERS INTEGRAL WITH DRIVER DISPLAY
- 1 DIGITAL VOLTAGE DISPLAY INTEGRAL WITH DRIVER DISPLAY
- 1 ELECTRIC FUEL GAUGE
- 1 ELECTRIC ENGINE OIL PRESSURE GAUGE
- 1 ELECTRICAL ENGINE COOLANT TEMPERATURE GAUGE

### **ENGINE AND EQUIPMENT**

- 1 CUM B6.7 220 HP @ 2400 RPM, 2600 GOV, 600 LB/FT @ 1600 RPM
- 1 ANTI-FREEZE TO -34F, OAT (NITRITE AND SILICATE FREE)EXT LIFE
- 1 ENGINE-MOUNTED OIL CHECK AND FILL
- 1 CUMMINS 18.7 CFM COMPRESSOR
- 1 CUMMINS SPIN ON FUEL FILTER
- 1 STANDARD ENGINE OIL
- 1 FULL FLOW OIL FILTER
- 1 DETROIT F/W SEP W/WIF SENSOR & HAND PRIMER
- 1 CUMMINS ENG INTEGRAL BRAKE W/VARI TURBO,STOP LAMP ON AT 5%
- 1 ALUMINUM FLYWHEEL HOUSING
- 1 STANDARD OIL PAN
- 1 ELECTRONIC ENGINE, INTEGRAL WARNING & DERATE PROTECTION SYST
- 1 DELCO 12V 38MT HD STARTER WITH INTEGRATE
- 1 GATES BLUE STRIPE COOLANT HOSES
- 1 CONSTANT TORQUE BREEZE CLAMPS ON 1" IN DIA GREATER, SS C
- 1 DONALDSON ONE-STAGE AIR CLEANER
- 1 700 SQUARE INCH ALUMINUM RADIATOR
- 1 VISCOUS FAN DRIVE
- 1 ELECTRONIC TACHOMETER 3000 RPM
- 1 DIGITAL TRANS OIL TEMP IN DRIVER DISPLAY

### **TRANSMISSION AND EQUIPMENT**

- 1 ALLISON 2500 PTS AUTOMATIC TRANSMISSION
- 1 ALLISON VOCATIONAL PACKAGE 354 - FIFTH GEN
- 1 TRANSMISSION OIL CHECK AND FILL
- 1 SYNTHETIC 50W TRANSMISSION LUBE (TES-295 COMPLIANT)
- 1 WATER TO OIL TRANSMISSION COOLER - IN RADIATOR END TANK
- 1 6M1-PROMARY MODE GEARS
- 1 FUELSENSE GHG

### **WHEELS AND TIRES**

- 1 FRONT HANKOOK AH24 11R22.5 14 PLY TIRES
- 1 REAR HANKOOK AH24 11R22.5 14 PLY TIRES
- 1 BENDIX SMARTIRE MONITOR SYSTEM
- 1 TIRE/WHEEL BALANCING-LEAD FREE WEIGHTS
- 1 ACCURIDE PK-BLACK21 POWDER BLACK WHEEL (N0001H)- FRONT
- 1 ACCURIDE PKBLK21 POWDER BLACK WHEEL (N0001H) - REAR

### **OTHER TYPE**

#### **Electrical - body**

- 1 ELEC-(2) USB OUTLET LS CABINET

### **DEALER ADD On's**

#### **EQUIPMENT**

- 1 DOT Vehicle Inspection
- 1 REI (5-cam) system

### **List all Co-Op choices:**

- ▶ BUYBOARD #722-23: ADD \$800 PER PO
- ▶ SOURCEWELL: ADD \$750 PER BUS
- ▶ TIPS #240901: ADD \$350 PER PO
- ▶ REGION 7: NO CHARGE IF ISD IS A MEMBER

**Meets all FMVSS requirements in effect at the time of manufacture.**

**Customer Is Member Following CO-OP:**  
TASB / Buyboard

**\*Co-op Price Per Each      \$ 161,000.00**

**Delivery:** Allow apx 180 business days a.r.o.

SELECT YOUR CHOICE OF CO-OP:

**\*BuyBoard Requires Additional \$800.00 Fee Per PO**

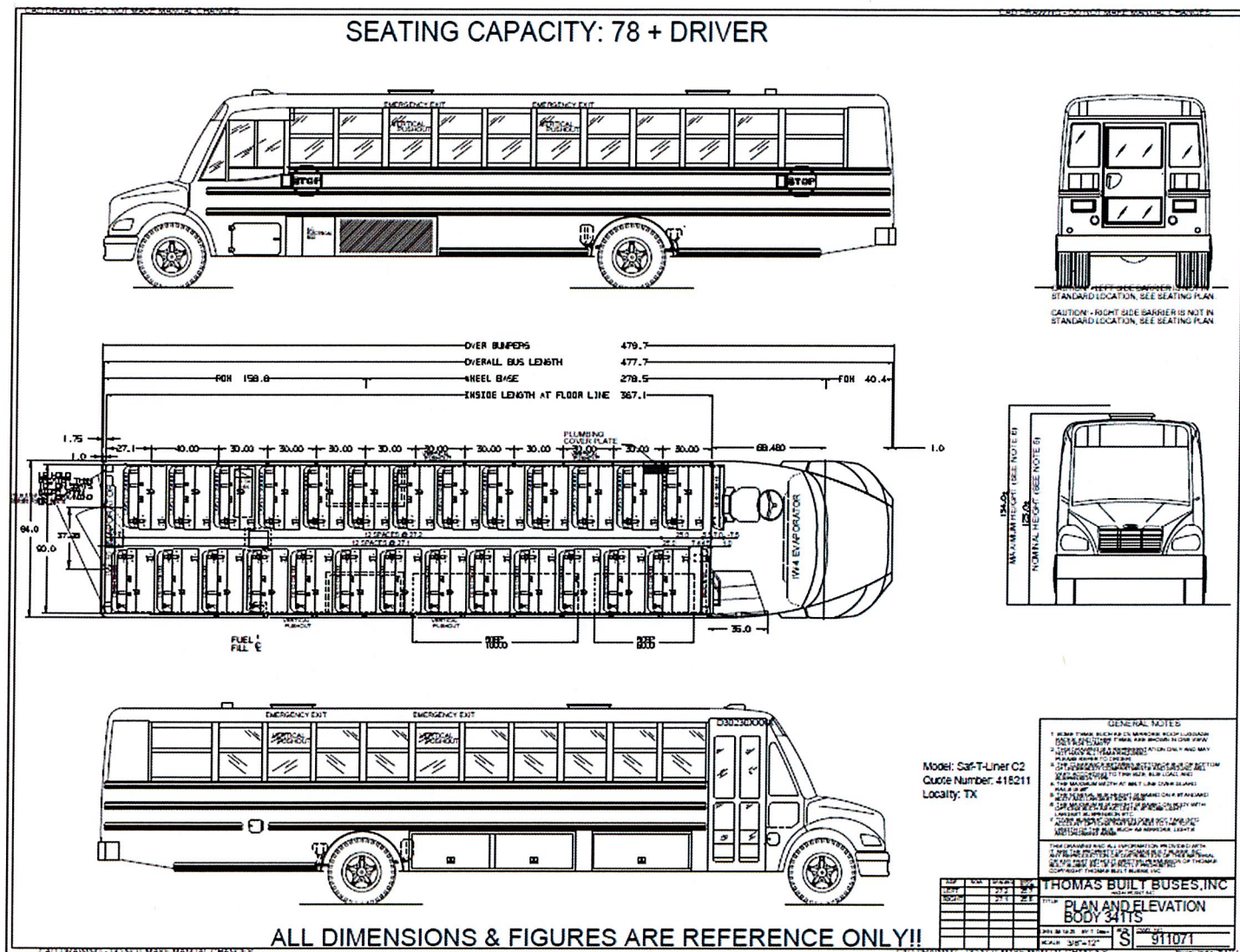
**Additional options you may want to consider:**

\$

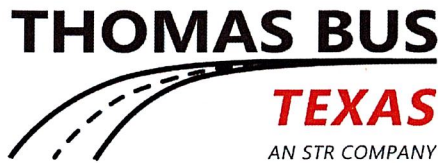
### Terms and Conditions:

Quote Expires: 30 DAYS

AttachedDetail







# Customer Quotation

Prepared For:

GREGORY-PORTLAND I.S.D.  
308 N GREGORY ST  
GREGORY, TX 78359

Prepared By :

Harry Hughes  
Thomas Bus Texas  
(832)216-8228  
[Harry.Hughes@ThomasBusTexas.com](mailto:Harry.Hughes@ThomasBusTexas.com)

Quote Number:  
418268

Quote Date:  
9/26/2025

Customer Order No:  
GPISD WC

## Model Profile: Saf-T-Liner C2 341TS

Product Type:	School Transportation
Year:	2026
Chassis Model:	B2 106
Chassis MFG:	FLNER
GVWR:	GVWR
Passenger Capacity:	58+3
Headroom:	78
Wheelbase:	279
Brake Type:	AIR
Engine Type:	CUMMINS B6.7 220 DIESEL, 6 Cyl, 220 HP, 2600 RPM
Fuel Type:	DIESEL
Fuel Tank Capacity:	100
Transmission Type:	AUTOMATIC
Axle, Front:	10000-lb Capacity
Axle, Rear:	23000-lb Capacity
Tires, Front:	FRONT BRIDGESTONE ECOPIA R268 11R22.5 14 PLY TIRES
Tires, Rear:	REAR BRIDGESTONE ECOPIA R268 11R22.5 14 PLY TIRES

Includes the Following Equipment:

### BODY

#### ACCESSORIES

- 1 VISOR-TINTED DRIVER'S SIDE WINDOW 6"X18"
- 1 LOCKS-KEYED ALIKE #CH545
- 1 LOCK-DRVR'S INTR STORAGE OVR DRV'S HEADER W/O INTRLK CH545
- 1 PAD-LUGGAGE RACK ENDS

#### CERTIFICATION/SAFETY

- 1 REFLECTTAPE-RR END YEL 2"
- 4 REFLECTTAPE-P/O WDO YEL
- 1 REFLECTTAPE-SI LIFT DR 50" YEL
- 1 REFLECTIVE TAPE-EMERGENCY DOOR REAR YELLOW
- 1 REFLECTTAPE-SI 2" ABV FLR YEL
- 1 FIRE EXTINGUISHER-5 3A-40BC
- 1 REFLECTORS-AMBER (4) MID/FRONT 3"
- 1 REFLECTORS-RED (4) RR/RR SI 3"
- 1 ELECTRICAL-ROOF ESCAPE HATCH POS 3
- 1 HANDLES-W/S SERVICE, BLACK
- 1 KIT,FIRST AID 24 UNIT TEX.
- 1 KIT - BODY FLUID CLEAN-UP NATIONAL STANDARDS
- 1 LABEL-PASS ADVISOR INSTRUCTION
- 1 LOCATION-VESTIBULE FLOOR PLATE LEFT 5LB FE
- 1 LOC-VEST.FLR.AFT REFL.TRIANGLE BRACKET TEXAS
- 2 CUTTER-SEAT BELT W/HAND GRIP
- 1 BLANKET-EMER "EVAC TRANSPORTER"
- 1 TRIANGLES-REFL. 3 W/BOX
- 1 BRACKET,MTG. REFL. TRIANGLES

- 1 LOC-EMER BLANKET DRIVER SIDE REAR
- 1 OPEN VIEW-ES, NON-HTD, RMT,SS
- 1 MIR-B EXT.CROSSVIEW SS.BRKT
- 1 MIRROR-INT 6"X30" CAMERA & LEVER
- 1 LABEL(S)-SPECIAL DATA, TX
- 1 LABEL-VEHICLE CERTIFICATION
- 1 DOMICILED USA-EXCLUDING CALIFORNIA AND CARB OPT-IN STATES

## **DOORS**

- 1 STEP-RS ALUM.ENT.DR 8.75"RISER
- 1 HANDLE-INT RR DR BLACK
- 1 HANDLE-EXTERIOR REAR DOOR WITH RECESS
- 1 VANDALOCK-REAR DOOR W/BOLT
- 1 DOOR-ENT AG2 TINT LAM LOCK
- 1 POWER SYSTEM-AG2 AIR ENTRANCE DOOR
- 1 VANDALOCK-ALUM.ENT.DR.CYLINDER W/KEY
- 1 PULL-ENTRANCE DOOR, EXTERNAL ALUMINUM
- 1 DOOR-SI LIFT RS RR 50" OPG
- 1 VANDALOCK-SI DR W/BOLT 50"
- 1 THRESHOLD 50" LIFT DOOR
- 1 TRIM-ENTRANCE DOOR INTERIOR
- 1 HEADER-50" REAR LIFT DOOR NON-ADA
- 1 PAD-DR HEADER, SI EMER 50"W
- 1 PAD-DR HEADER, RR EMER 36"W
- 1 TREAD-STEP ALUMINUM ENTRANCE DOOR BLACK KORSEAL W/PEB NOSING
- 1 TRIM-STEPWELL HORIZONTAL WITH RIBBED NOSE
- 1 RAIL-ASSIST FRONT ENTRANCE DOOR RIGHT SIDE 1"OD

## **ELECTRICAL - BODY**

- 1 FAN-CIRC DRV'S WDO HDR BLACK
- 1 RADIO-AM/FM DEA510 W/PAGE
- 1 ELEC-HARDWARE FRT LIFT PUMP
- 1 MONITOR-LPS WARN CEEA+
- 1 OPER-MONITOR LPS WARN ONLY CEEA+
- 1 LPS-DOME OVER DRIVER LED
- 1 LPS-DOME PASS MEDIUM LED () 341T
- 1 ELEC-LPS EXT AFT OF ENT DOOR
- 1 LPS-STP/TAIL/DIR AMBER/REV LED
- 1 ADVISORY-PASSENGER BUZZER ACTIVATION, WITH SWITCH
- 1 OPER-NOISE SUPP ON/OFF
- 1 LPS-LIC PLATE ILLUMINATION LED
- 1 LPS-SI DIR AMBER FRT. LED PIN
- 1 LPS-WARNING LED STROBE (8)
- 1 LPS-ID AMB/RED LED
- 1 LPS-MKR ROOF FRT/RR LED PIN
- 1 LPS-MKR ROOF MID LED PIN
- 1 STROBE-ECCO 7460CC 6' FROM REAR
- 1 LPS- STOP/TAIL 4" FLS.MT L.E.D.
- 1 LPS-SI DIR RED LED PIN RR.AXLE
- 1 Elec-Cable Prim Pwr & Gnd
- 1 LAYOUT-ROCKER SWITCH STANDARD
- 1 LPS-ID SIGN FRONT/REAR
- 1 ELEC-PV 360 CAM STOP/TAIL/TURN
- 1 Elec-Noise Suppression
- 1 Elec-Transmission Inhibit
- 1 OPER-ALTERNATING HEADLAMPS
- 1 SPEAKERS-INT. 30 WAT.(6) 341T
- 1 DOME LPS - MEDIUM
- 1 112DB BACKUP ALARM

## **EXTERIOR**

- 1 FLAPS-MUD, FRONT 16"W X 12"H
- 1 STEPS-EXT W/S SERVICE
- 1 FENDER-QUARTER 24" BATTERY BOX DOOR
- 1 BODY ADJUSTMENT-FREIGHTLINER, BTR RS FUEL FILL LOCATION
- 1 REINFORCEMENT-FRAME 24" BATTERY DOOR AND A/C
- 1 CAP-ENTRANCE DOOR STANDARD



- 1 FLOOR-NON ADA
- 1 RAIL-EXT GRD 50" W/ DOOR (1)
- 1 BUMPER-REAR 2 BRACES NO EXHAUST HOLE
- 1 SKT.FWD.STPWLL LO DEF
- 1 CAP-FRT ROOF VENT W/WARN.LPS.
- 1 CAP-REAR ROOF W/WARN.LPS.
- 1 GUSSET-21"H LWR SIDE SHEET
- 1 SHEET-LWR, L MID 20G,21"
- 1 SHEET-LWR,L RR 20G,21"
- 1 SHEET-LWR,R MID 20G,21"
- 1 SHEET-LWR,R RR 20G,21"
- 1 DOOR-U/B L BATTERY 24"
- 1 DOOR-FUEL FILL ACCESS BTR
- 1 FENDERETTE-STL 21" SKIRT
- 1 LATCH-BATT DOOR NON-LOCKING
- 1 LATCH-FUEL FILL ACCESS (THUMB)
- 1 VENT-STATIC PRESENT
- 1 PILASTER - 341T, 922
- 1 LATCH-NON-LOCKING DEF ACCESS DOOR
- 1 RAIL-SNOW RAIL PRESENT
- 1 HARDWARE-MOUNTING CLIPS STANDARD

## **HVAC**

- 1 AC-126K BTU-FREE BLOW BULKHEAD
- 1 AIR CONDITIONING CONTROLS-STANDARD
- 1 CONDENSER- CM3 (2)
- 1 EVAP - IW10 RR, IW4 FRONT
- 1 PLUMB.-AC COMP DUAL ISB
- 1 AC CTL.BD.STD.TIE IN SGL.LOOP
- 1 PLUMBING-IW10, IW4
- 1 CABLE-EVAP 2 FRT BULKHEAD
- 1 HOSE-HTR BLUSTRIIP W/ W/H POS 17
- 1 CLAMPS-UNDERSEAT HEATER CONSTANT TORQUE
- 1 LOCATION-EVAP NO2 FRONT BULKHEAD
- 1 HTR-RS 84,000 BTU RR FLR.
- 1 VALVE-SHUTOFF LS U/SEAT HTR WHOUSE
- 1 ADDL AUX LINES W/MANIFOLD PLUMBING AND COMBINED SHUTOFF
- 1 PLASTIC COOLANT BOOSTER PUMP WITH AUTOMATIC CONTROL
- 1 HEATER, DEFROSTER,AND AIR COND
- 1 BODY BUILDER SUPPLIED PLUMBING W/ACCESS HOLES IN FRAME RAIL
- 1 AUXILLARY HEATER PLUMBING WITH BODY SOLENOID SHUTOFF

## **INTERIOR**

- 1 VISOR-WINDSHIELD SUN 6"X30" TINTED
- 1 DOOR-STORAGE BOX W/O GLASS
- 1 TRIM-LOWER REAR HEATER NO A/C
- 1 REINF-SIDE DOOR JAMB AT REAR END
- 1 FLOOR-GALVALUME STEEL MID BODY
- 1 REINF-RR END A/C EVAP. IW10
- 1 REINFORCEMENT-REAR STOP SIGNAL 40"
- 1 REINF-FRONT A/C EVAP.
- 1 BTR FUEL FILL RECESS, W/DOOR
- 1 BULKHEAD-RR END INT.W-A/C IW10
- 1 COVER-TRIM DRVS HDR W/STORAGE
- 1 COVER-TRIM FRT END W/S HEADER A/C
- 1 FLR-BLK VINYL W/13" CTR AISLE 341T
- 1 FLR-BLK WHEELHOUSE AND HEATER
- 1 RACK-LUGGAGE INT TUBULAR
- 1 INSULATION-FRT BULKHEAD W/ACRSY 2"POLY
- 1 H/L-1ST WDO SEC ACOUS GRY 341T
- 1 INSULATION - RAFTER CAVITY 341T
- 1 MAT, FLOOR VESTIBULE CEEA+
- 1 Trim - Interior Dash Fwd.
- 1 ROUTING-PLYWOOD FLOOR WITH LIFT DOOR
- 1 TUBE-FILL BTR & OVERFLOW HOSE
- 1 CAP-FUEL FILL BTR NON-LOCKING

## **MISC**

- 1 PDI IDENTIFIER-DEALER PERFORMED
- 1 CONDENSER ALERT - PRESENT SHORT
- 1 APPLICATION - SCHOOL
- 1 70 MPH ROAD SPEED LIMIT
- 1 SAF-T-LINER C2

## **PAINT/LETTERING**

- 1 DECAL-UNITED AUTO WORKERS
- 38 LETTERING - 6" HIGH
- 1 LOGO-THOMAS DECALS BLACK
- 4 LABEL-P/O WDO EMER EXIT 2" BLACK
- 1 LABEL-ENGLISH AG2.AIR.ENT DR
- 1 SYMBOL-HAND BELOW DRIVER'S WINDOW
- 1 DECAL-BACKING ALARM
- 1 DECAL-LOW SULFUR FUEL
- 1 LABEL-RR DR EMERGENCY DOOR 2"HIGH
- 1 DECAL-ENTRANCE DOOR VANDALOCK ENGLISH
- 1 LABEL-RR EMERGENCY DOOR INSTRUCTION
- 1 LABEL-"DEF ONLY"
- 1 LABEL-REGENERATION WARNING 2010/2013 EPA ENGLISH
- 1 HANDLE-INT SI DR BLACK
- 1 HANDLE-EXTERIOR SIDE DOOR WITH RECESS
- 1 PAINT-EXT HNDLE(S) BLACK
- 1 DECAL-"DIESEL"
- 1 PAINT-EXTERIOR ROOF WHITE 341T
- 1 PAINT-EXT WDO AREA SAME AS BODY
- 1 PAINT-EXT GRD RAIL @ WINDOW BLACK
- 1 PAINT-EXT GRD RAIL @ SEAT BLACK
- 1 PAINT-EXT GRD RAIL @ FLOOR BLACK
- 1 PAINT-EXT GRD RAIL @ SKRT BLACK
- 1 PAINT-EXT BUMPER REAR BLACK
- 1 PAINT-BLACK TRIM-FRONT/REAR ROOF CAPS
- 1 DECALS-SIDE SHEET REFL "SCHOOL BUS"
- 1 PAINT-SOLID COLOR YELLOW
- 1 DECAL-APPROVED FUEL TYPE
- 1 HEADLINING-VESTIBULE ACOUSTIC, GRAY, DRIVER LAMP
- 1 LABEL-AIR CONDITIONING SPECIFICATION TEXAS
- 1 PAINT:ONE SOLID COLOR,BASE/CLEARCOAT
- 1 CAB COLOR A:L5898EB SCHOOL BUS YELLOW ELITE BC

## **SEATS**

- 1 OFF-SET LS BARRIER 4"
- 1 ALERT-S.T.A.R.S. PRESENT
- 1 SEAT BELT - DRIVERS SEAT
- 1 39" BARR-VERT,WALL MT 45"H RS 2009
- 1 39"8DEG BARR-REV. WALL-MT 45"H 2009
- 2 PRO GRA/BLK UPH-45"H RECESSED BARRIER
- 1 RAIL-ASSIST FRT ENT DR 39"W
- 1 BACK-NATIONAL DRV'S SEAT
- 1 ARMREST NATIONAL DRV'R'S ST. BOTH SIDES
- 1 UPH DR.ST.PRO BLK NATIONAL
- 1 PEDESTAL-NATIONAL AIR W/2 SHOCKS
- 1 RETAINER NATIONAL DR.ST.BELT
- 1 KICKPLATE-MOD.PANEL RS 39" IW4
- 1 RISER-DRIVERS SEAT, NATIONAL
- 17 FIREBLOCK GRAY/BLACK UPHOLSTERY - IMMI SBR PASSENGER SEAT
- 1 HARDWARE-SBR WALL MOUNT C2/MINO
- 2 IMMI SBR 36" LS WALL MNT 3PT 2POS ICS 2POS
- 3 IMMI SBR 36" RS WALL MNT 3PT 2POS ICS 2POS
- 6 IMMI SBR 39" LS WALL MNT 3PT 3POS
- 6 IMMI SBR 39" RS WALL MNT 3PT 3POS

## **SPECIAL NEEDS EQUIPMENT**

- 1 SYMBOL-HAND LIFT DR
- 1 SYMBOL-HAND RR EMER DR
- 1 SYMBOL-HAND FRONT BUMPER LS



- 1 LIFT-WHEELCHAIR BRAUN NCL919FIB-2 (U.S.)
- 2 TRACK-OVERHEAD 10" LENGTH LS
- 2 POUCH-STORAGE VINYL SURELOK
- 2 RESTRAINT SYS-SURELOK TITAN AL860S-4C- SNC
- 1 RETAINER-50"W SI DR CHN & HOOK

## **WARRANTY**

- 1 BODY WARRANTY FIVE YEARS/100K MILES AIR CONDITIONING

## **WINDOWS/GLASS**

- 1 GLASS-WINDSHIELD ONE PIECE WITH TINTED BAND
- 1 GLASS-RS FRT STAT TNT LAM
- 1 GLASS-LS FRT STAT TNT LAM
- 1 GLASS-RR STAT TINTED LAMINATED
- 1 FRAME-WDO SPLIT
- 1 FRAME-WDO SPLIT 20"W
- 15 FRAME-WDO SPLIT 30"W
- 1 FRAME-WDO SPLIT 40"W
- 2 FRAME-WDO P/O VERT LAM TINT LS
- 2 FRAME-WDO P/O VERT LAM TINT RS
- 1 GLASS-WDO TINT LAM 20"
- 15 GLASS-WDO TINT LAM 30"
- 1 GLASS-WDO TINT LAM 40"
- 1 STOPS-WDO 12"
- 1 GLASS-LOWER REAR DOOR LAMINATED TINTED
- 1 GLASS-UPPER REAR DOOR LAMINATED TINT
- 1 WDO-DRIVER'S LAM TINT
- 1 GLASS- 50"W SI DR LAM TNT

## **OTHER**

- 4 S.T.A.R.S. PHANTOM LS-SBR-39" C2/MINO
- 1 LOGO-FRT RS & RR
- 1 SWITCH-RKR DEST.SIGN
- 1 ELEC-FAN DRV'S WDO HDR
- 1 HATCH-RF ESC SPEC ADVANTAGE H1976-015-131 ENGLISH GRAY (2)
- 1 ELEC-RF ESC HATCH POS 9
- 1 ARM ASSEMBLY-WINDSHIELD WIPER (2)
- 1 ELEC-ROOF HATCH - P/O WDO
- 1 OPER-FAN DRV'S WDO HDR
- 1 OPER-ALARM BACKING W/REV.
- 1 OPER-ROOF HATCH BUZZER
- 1 Evap Trim-Int(2) IW10, IW4
- 1 OPER-A/C CONTROL- STANDARD L.H.
- 1 OPER-ID SIGN,FRONT & OR REAR
- 1 ELEC-ID SIGN FRT/ REAR 341T
- 1 LOCATION-VESTIBULE FLOOR PLATE CENTER 24 FAK
- 1 LOC-VEST.FLR.PLT.FWD. 10 BFC
- 1 ANTENNA - RADIO SWIVEL BASE
- 1 ELEC-ANTENNA RADIO COAXIAL
- 1 KIT-RADIO ANTENNA MOUNTING @ DRIVER'S HEADER
- 1 Manual-Dvr's/Maint.English
- 1 ELEC-NO ZONAR MONITORING
- 1 ELEC-BACKING CAMERA
- 1 ALERT-6.7L CONDENSER SHORT
- 1 Elec-AC Digital Signal
- 1 Elec-Aux BCA Power Cable
- 1 BCA-Aux w/o Contactor
- 1 341T30\_RK-5-1B
- 1 TRIM-A POST
- 1 WHEELHOUSES-REAR L&R
- 1 STRINGER-ROOF 341T
- 1 FRONT END FRAME
- 1 FRT END FRAME MTG KIT
- 1 REAR END FRAME-28.68"DEEP
- 1 LOC-40" RAF SP 11TH 341T
- 1 TRIM-REAR DOOR
- 1 ELEC-AG2 AIR OP.ENT. DOOR

- 1 HINGES-REAR DOOR PIN TYPE
- 1 LATCH-SINGLE-POINT, REAR EMERGENCY DOOR
- 1 STOP-DOOR REAR EMERGENCY, 1-POS
- 1 OPER-DOOR AIR ENT.W/ BAT.2 POS.
- 1 OPER-VANDLCK.ENT./ EMERDR(S)W/PLT.LPS
- 1 HINGES-50"W SI DR PIN TYPE
- 1 LATCH-SGL-POINT,50"W SI DR
- 1 OPER-DR.RR.EMG.W/BUZ
- 1 ELEC-EMERG/EXIT DOORS FMVSS COMPLIANT LIFT
- 1 TRIM-50" SIDE DOOR 40"OPG FWD
- 1 SWITCH-PAD. ENT.DOOR AIR.
- 1 OPER-DR LIFT W/BUZ/DR.PLT LPS
- 1 DOOR, REAR EMERGENCY
- 1 THRESHOLD REAR EMERGENCY DOOR
- 1 ELEC-DRIVER'S DOME LPS
- 1 ELEC-PASS DOME LPS MEDIUM ()
- 1 SWITCH-RKR DOME LPS ALL
- 1 Module-Pwr.Dist.Elec.Sys.
- 1 SWITCH-RKR PANEL LPS DIM
- 1 OPER-SWITCH, PANEL LPS DIMMER
- 1 LPS-EXT AFT OF ENT DOOR
- 1 OPER-STEPWLL LPSW/PARKLPS&ENT DR.
- 1 LPS-STPWLL LED (1)
- 1 ELEC-PASSENGER ADVISORY
- 1 OPER-PASS ADV IGN/WARN/BUZZER
- 1 SWITCH-RKR FAN DEFROST L.S.
- 1 BUZZER-SWITCH PANEL 1 TONE
- 1 LPS-PILOT VANDALOCK STATUS RED
- 1 ELEC-PWR, GND, NETWORK, BUZZ
- 1 LPS-PILOT W/C LIFT POWER RED
- 1 ELEC-LPS WARNING, 8 LPS
- 1 LPS-PILOT LIFT DOOR RED
- 1 OPER-LPS, DOME RS ENT DR
- 1 LPS-PILOT POST TRIP INSP RED
- 1 OPER-LPS BODY TAIL W/PARK SW.
- 1 ELEC-LPS SI DIRECTIONAL 341T
- 1 OPER-LPS WARNING (8) PKG 2
- 1 OPER-LPS REV.W/RR EMG.DR.OPEN
- 1 ELEC-LPS ID/MKR PARK/SW.
- 1 SWITCH-RKR DOME LPS DRVR.ON/OFF
- 1 ELEC-LPS STROBE 6' FROM RR
- 1 SWITCH-RKR NOISE SUPPR ON/OFF
- 1 OPER-DRVR'S DOME LPS ON/OFF
- 1 OPER-HTR BOOSTER PUMP AUTOMATIC
- 1 OPER-LPS INT/EXT R.F. ENT DR.
- 1 OPER-LPS SERVICE BRAKE
- 1 OPER-LIFT SPCL NEEDS BATT/IGN CONTR
- 1 OPER-SW.ID/MARK LPS W/PARK
- 1 SWITCH-RKR STROBE LPS
- 1 OPER-LPS DOME (1)ON/OFF
- 1 OPER-LPS REVERSE
- 1 ELEC-(3) SWITCH BANK
- 1 SWITCH-RKR W/C LIFT POWER
- 1 LPS-PILOT WARN LGTS RED
- 1 LPS-PILOT WARN LGTS AMBER
- 1 SWITCH-WARN LPS ON/AMB ACT.
- 1 OPER-LPS STROBE, IGN & SW ACTIV
- 1 SWITCH-RKR A/C FAN SPD.
- 1 CABLE-EVAPORATOR 1 POWER SUPPLY STANDARD
- 1 SWITCH-RKR A/C ON
- 1 ELEC-HARNESS COMP ASM
- 1 OPER-LPS DIR./HAZ.
- 1 OPER-LPS SIDE DIRECT.ONLY
- 1 Block-PDM Customer Access
- 1 OPER-WARNING RED "ON" LIFT DOOR OPEN



- 1 OPER-PRE-TRIP INSPECTION
- 1 ELEC-SEAT BELT PILOT LAMP
- 1 OPER-SEAT BELT PILOT LAMP
- 1 Elec-Stepwell Lamp
- 1 Elec-Standard Switch Interface
- 1 Elec-Heater Booster Pump
- 1 Oper-Buzzer, Switch Panel Tone
- 1 Starpoint-Junction Block
- 1 ELEC-MIR A NH & RC
- 1 SIGN-STOP, ELECTRIC FRONT FISA STROBE
- 1 SIGN-STOP, ELECTRIC REAR FISA STROBE
- 1 ELEC-ELECTRIC STOP SIGN FRT
- 1 ELECTRICAL-ELECTRIC STOP SIGN REAR
- 1 RAIL-EXTERIOR GUARD @ WINDOW,SEAT,FLOOR,SKIRT
- 1 RAIL-EXT GRD @ SEAT FRT END LS
- 1 TRIM-FRT CAP RS/LS
- 1 PANELS-EXTERIOR REAR
- 1 SHEET-DRIVERS EXTERIOR 20 GA.
- 1 SHEET-UPPER SIDE EXTERIOR
- 1 UNDERCOATING-ASPHALT EMULSION
- 1 HEADERS-WINDOW INTERIOR 341T
- 1 PANELS-REAR END INTERIOR REAR GALVALUME
- 1 Panels-Rr End Int Si Long w/sld.pnl.
- 1 PANELS-ACCESS RR GRAY PASS ADVISORY
- 1 COVER-HARNESS ACCESS@HDR
- 1 COVER-ACCESS FRT END HARNESS
- 1 COVER-TRIM FRT ENT.ALUM.DR HDR.AIR.OP.
- 1 HEADLINING-REAR LONG SMOOTH, GRAY
- 1 STRIPS - AISLE, SNAP-IN BLACK
- 1 Flr-Plywood 5/8" 341T
- 1 COVER-FUEL SENDING INSPECTION
- 1 Molding-Shoe
- 1 ELEC- (6) INT SPEAKERS 341T
- 1 LUGGAGE RACK ALERT - PRESENT
- 1 SWITCH-RKR HTR RR WALL
- 1 RAIL-SEAT
- 1 Lining-Side Int.
- 1 CABINET-SW, FWD
- 1 CABINET-SWITCH, LWR W/O POCKET
- 1 CABINET-SWITCH, UPPER
- 1 CABINET-TOP PLATE (3 BANK)
- 1 INSULATION-VEST HEADLINING 2"
- 1 INSULATION-SIDELINING 2" POLY
- 1 INSULATION-RR BULKHEAD 2" POLY
- 1 OPER-HTR RR.WALL / R.S.RR.FLR.
- 1 HEADERS-WINDOW EXTERIOR 341T
- 1 LOCATION-EVAPORATOR NO1 REAR BULKHEAD
- 1 HARNESS COVER COLOR - GRAY
- 1 SPEAKER ALERT - PRESENT
- 1 HEADLINING COLOR - GREY
- 1 HDLINING TYPE-1ST WDO ACOUSTIC
- 1 ELEC-HTR U/ SEAT POS.17
- 1 INSULATION-INT LONG REAR END
- 1 PLATE-ACCELERATOR
- 1 LABEL-QR CODE
- 1 OPER-WDO P/O
- 1 DUAL SELTEC TM-21 COMPRESSORS REAR MINI STAT-O-SEAL
- 1 CRUISE CTRL-ELEC ENG,W/SWITCHES IN STEERING WHEEL
- 1 ELECTRONIC PARK BRAKE NONE
- 1 VANDALOCK,STARTER DISABLE W/ANY LOCKED EMER DR(S),LH PT LAMP
- 1 REINFORCED NYLON FUEL LINES
- 1 PAINTED FUEL TANK, PAINTED BANDS
- 1 SINGLE SUCTION AND RETURN FUEL LINES
- 1 FUEL TANK MOUNTED BETWEEN RAILS, AFT OF REAR AXLE, WITH CAGE
- 1 STAINLESS STEEL CHARGE AIR COOLER PLUMBING

- 1 REMOTE-MOUNTED SURGE TANK
- 1 BASIC WIRING SCHEMATIC, UNMOUNTED, 12-VOLT NEGATIVE GROUND SYS
- 1 PAINTED BATTERY PANEL COVER
- 1 ENGINE AFTER TREATMENT DEVICE AUTOMATIC
- 1 BATTERY BOX FRAME MOUNTED
- 1 (3) DTNA 3000CCA FLOODED STARTING, 555RC THREADED STUD BATTE
- 1 BATT SHUTOFF SWITCH W/AUX CONTACT BATT BOX SMART CONTACT
- 1 INTEGRAL ELECTRONIC TURN SIGNAL FLASHER W/40A (20A PER SIDE
- 1 SELF CANCEL TURN SIGNAL SWITCH W/DIM/WASH&HAZZARD IN HANDLE
- 1 BATT ENABLED 3 AMBER INBOARD ID LAMPS, 2 AMBER OUTBOARD MARKE
- 1 STROBE LAMP, IGNITION SWITCH OR LH DASH SWITCH ACTIVATED
- 1 ID SIGN(S), ILLUMINATED, LH DASH SWITCH ACTIVATED
- 1 L.E.D. WARNING SYSTEM LAMPS W/PULSING FEATURE
- 1 STANDARD BODY VISUAL WARNING, LOWER RR, REV LAMPS ON DR/OPEN
- 1 STANDARD WIRING
- 1 DRIVER'S IGNITION OPERATED DOME LP WITH ON/OFF SW
- 1 PASSENGER COMPARTMENT DOME LAMPS, IGNITION ACTIVATED
- 1 PASSENGER COMPARTMENT DOME LPS, SINGLE ON/OFF SW
- 1 OVER DOOR LAMP, RH EMERGENCY/LIFT DOOR
- 1 STEPWELL LAMP ON WITH DOOR OPEN AND MARKER LAMPS ON
- 1 EIGHT LAMP WARNING SYSTEM, LH DASH SWITCH(S), PACKAGE 2
- 1 CURT WRIGHT 2K SERIES CAN BASED ACTUATOR WO PARK PAWL
- 1 DRIVELINE GUARD
- 1 NON-ASBESTOS FRONT BRAKE LININGS
- 1 FRONT SHOCK ABSORBERS
- 1 NON-ASBESTOS REAR BRAKE LININGS
- 1 REAR OIL SEALS
- 1 MAXION 91262 22.5 X 8.25 10 HOLE HUB PILOT 5-HAND
- 1 MAXION 91262 22.5 X 8.25 10 HOLE HUB PILOT 5-HAND
- 1 TWO QUART SEE THRU POWER STEERING RESERVOIR
- 1 STD FITTINGS POWER STEERING GEAR
- 1 POWER STEERING PUMP
- 1 4-SPOKE 18" STEERING WHEEL WITH SWITCHES
- 1 ZINC-PLATED HEXHEAD CHASSIS FASTENERS
- 1 3975MM (155") REAR FRAME OVERHANG
- 1 SQUARE END OF FRAME
- 1 BUMPER MOUNTING FOR SINGLE LICENSE PLATE
- 1 COMBINATION S/T/T/R LAMPS, LED
- 1 REAR EMERGENCY DOOR, IGNITION CONTROL, BUZZER ON W/DOOR OPEN
- 1 MAINTENANCE-FREE RUBBER BUSHINGS - FRONT SUSPENSION
- 1 CAB MOUNTING FOR HOOD AND COWL CHASSIS
- 1 MANUAL ENT DOOR LOCK/BUZZER ON W/EMERGENCY DOORS UNLATCHED
- 1 ONE GALLON WINDSHIELD WASHER RESERVOIR
- 1 SINGLE ELECTRIC WINDSHIELD WIPER MOTOR W/DELAY
- 1 MS/S2 DASH
- 1 A/C PLMBG, IW10, IW4, CM3/3, 126K, B6.7, 199+, B2
- 1 AUXILIARY BODY HEATER, UNDER SEAT, REAR WALL
- 1 STANDARD HVAC DUCTING
- 1 CARBON WITH BASE BLACK ACCENT
- 1 DRIVER'S FAN, (1) MOUNTED ABOVE SIDE WINDOW
- 1 DIGITAL AUXILIARY BODY MOUNTED AC CONTROL
- 1 CONFIGURABLE INSTR PANELS W/UPPER STORAGE
- 1 DIGITAL ALARM CLOCK IN DRIVER DISPLAY
- 1 AIR PROVISIONS FOR CUSTOMER FURN DRIVERS AIR RIDE SEAT
- 1 ROOF MOUNTED VENT/ESCAPE HATCH
- 1 PUSH OUT BODY SIDE WINDOWS, BUZZER WITH WINDOW UNLATCHED
- 1 PREMIUM INSTRUMENT CLUSTER 5" TFT COLOR DISPLAY
- 1 SEPARATE PANEL LAMP DIMMER, LH DRIVER'S SWITCH PANEL
- 1 PRE/POST TRIP SYSTEM TEST
- 1 CHASSIS COWL AND HOOD ONLY
- 1 DUAL NEEDLE PRIMARY & SECONDARY AIR
- 1 BUMPER: BLACK
- 1 CHASSIS: VENDOR BLACK
- 1 CEEA+ 667 ELECTRICAL ARCHITECTURE
- 1 EXPECTED GROSS VEHICLE WEIGHT CAPACITY



- 1 EXPECTED FRONT AXLE(S) LOAD
- 1 EXPECTED REAR DRIVE AXLE(S) LOAD
- 1 SCHOOL BUS SERVICE
- 1 COWL CHASSIS CONFIGURATION COMPLIES WITH SBMTC
- 1 BUS BODY WITH WHEELWELL
- 1 PASSENGER COMMODITY
- 1 100% ON-HIGHWAY (CITY) TERRAIN
- 1 DOMICILED TEXAS
- 1 THOMAS BUILT SCHOOL BUS 341T
- 1 EXT TOWING 2YR/UNLTD \$750 CAP US

## **CHASSIS**

### **AXLES AND SUSPENSIONS**

- 1 ALIGNMENT-4-WHEEL SAF-T-LINER C2
- 1 SPL100 DANA SPICER MAIN DRIVELINE
- 1 DA-F-10-3 10,000# FF1 71.5 KPI/3.74 DROP SINGLE FRONT AXLE
- 1 FRONT OIL SEALS
- 1 SYNTHETIC 75W-90 FRONT AXLE LUBE
- 1 CONMET IRON FRONT HUBS
- 1 SYNTHETIC 75W-90 REAR AXLE LUBE
- 1 DA-RS-23-4 23,000# R-SRS SINGLE REAR AXLE
- 1 5.56 REAR AXLE RATIO
- 1 IRON REAR AXLE CARRIER HOUSING
- 1 REAR SHOCK ABSORBERS - ONE AXLE
- 1 CONMET IRON REAR HUBS
- 1 10,000 LB. TAPERLEAF FRONT SUSPENSION
- 1 AIRLINER 23,000 LB. REAR SUSPENSION
- 1 COMFORT-TEC SUSPENSION
- 1 DUAL AIR REAR SUSPENSION LEVELING

### **BRAKES**

- 1 ALERT-ENHANCED STABILITY CONTROL
- 1 AIR BRAKE PACKAGE
- 1 MERITOR 15 X 4 Q+ CAM FRONT BRAKES (ROCKWELL)
- 1 HALDEX LONGSTROKE FRONT BRAKE CHAMBER
- 1 MERITOR AUTOMATIC FRONT SLACK ADJUSTERS
- 1 CONMET CAST IRON FRONT BRAKE DRUMS
- 1 MERITOR 16 1/2 X 7 Q+ CAM REAR BRAKES, DBL-ANCHOR, FAB SHOES
- 1 HALDEX, LONGSTROKE, SINGLE DRIVE AXLE, SPRING-PARK CHAMBERS
- 1 MERITOR AUTOMATIC SLACK ADJUSTERS
- 1 CONMET CAST IRON REAR BRAKE DRUMS
- 1 STEEL AIR BRAKE RESERVOIRS INSIDE FRAME RAILS
- 1 BENDIX AD-9 AIR DRYER WITH HEATER
- 1 WABCO 4S/4M ABS W/TRACTION CONTROL
- 1 ONE-VALVE PARKING BRAKE SYSTEM WITH WARNING

### **CHASSIS EQUIPMENT**

- 1 EXHAUST-LS TURNDWN, BELOW BMPR
- 1 ANTI-FREEZE, OAT -34 DEGREE
- 1 SHIELD-EXHAUST PIPE
- 1 B2 106 CONVENTIONAL CHASSIS
- 1 SET-BACK AXLE - TRUCK
- 1 ELECTRIC GRID AIR INTAKE WARMER
- 1 NO CLUTCH PEDAL WITH NON-ADJUSTABLE
- 1 INTAKE MOUNTED AIR RESTRICTION INDICATOR WITHOUT GRADUATIONS
- 1 RIGHT HAND SIDE-FILL FUEL TANK CAP
- 1 100GALLON/378 LITER STEEL RECTANGULAR FUEL TANK, BETWEEN RAIL
- 1 HORIZ TAILPIPE, EXIT LH REAR
- 1 11.5 GALLON DEF TANK
- 1 STEERING WHL MTD HORN CONTROL
- 1 MAGNETIC ENGINE DRAIN, REAR AXLE DRAIN & FILL PLUG
- 1 EXHAUST MITIGATION DEVICE FTL 4" ID SLIP
- 1 700 CUBIC INCH MINIMUM AUXILIARY AIR
- 1 PETCOCK DRAIN VALVES ON ALL AIR TANKS
- 1 ADJUSTABLE STEERING COLUMN
- 1 TRW THP-60 POWER STEERING
- 1 7075MM (279") WHEELBASE

- 1 5/16" X 3" X 10-1/8" STEEL FRAME 120,000 PSI YIELD
- 1 1-PIECE 14" PTD STL 1/4" HD BUMPER JACK PROVISION
- 1 FRONT FRAME-MOUNTED TOW HOOKS
- 1 STANDARD DUTY HOOD MOUNTING
- 1 FIBERGLASS HOOD
- 1 HOOD MTD CHROMED PLASTIC GRILLE
- 1 ALL LOCKS KEYED THE SAME
- 1 CHROME HOOD MOUNTED AIR INTAKE GRILLE
- 1 CAB FLOOR,TOE BOARD,FIREWALL HEAT SHIELD
- 1 (2) CUPHOLDERS, LEFT HAND AND RIGHT HAND DASH
- 1 REINFORCED NYLON, FABRIC AND WIRE BRAID CHASSIS AIR LINES

### **ELECTRICAL - CHASSIS**

- 1 LN 12 VOLT 270 AMP 4949PA PAD MOUNT ALTERNATOR
- 1 PROG RPM CTRL W A/C OR 12.75V LOW VOLT AUTO HI IDLE, DASH SW
- 1 DIAGNOSTIC INTERFACE CONNECTOR,9-PIN, S
- 1 IGNITION SWITCH CONTROLLED ENGINE STOP
- 1 ALTERNATELY FLASHING HEADLAMP SYSTEM W/BODY BUILDER ENGAGEMENT
- 1 12VOLT POWER SUPPLY LH PANEL
- 1 SOLID STATE CIRCUIT PROTECTION, PDMS WIT
- 1 STANDARD FRONT TURN SIGNAL LIGHTS
- 1 ROTARY HDLAMP SWITCH, MRKR LTS/HDLTS SW W/O FOG/RD LMPS
- 1 AMBER LED MIDSHIP TURN SIGNALS
- 1 RED LED OVER REAR WHEELS MTD TURN SIGNALS GUARD
- 1 DAYTIME RUNNING LIGHTS SET @ 100% & EXTERIOR LAMPS W/ENG RUN
- 1 LED HEADLIGHT ASS & INCANDESCENT MARKER/TURN LAMP CHROME
- 1 ELECTRONIC STABILITY CONTROL
- 1 RH LIFT DOOR,BATTERY/IGNITION,PILOT LT BUZZ OFF @ FULL OPEN
- 1 AIR OP ENT DR,BATT CTR,RH FT DR,PASS DOME LPS ON DOOR OPEN
- 1 OFF-ON RED LS PNL
- 1 AC W/ RECIRC; ON/OFF NOISE SUPR
- 1 DUAL ELEC HORN, PASSENGER ADVISORY BUZZER ON W/IGN AND WARN
- 1 C/F J1939 RADIO W/PA
- 1 FASTEN SEAT BELT INDICATOR FOR CUSTOMER SUPPLIED SEAT BELT
- 1 ELECTRONIC SPEEDOMETER WITH SECONDARY KPH SCALE, NO ODOMETER
- 1 WARNING LAMP MONITORING-CEEA+
- 1 ENGINE AND HOUR METERS INTEGRAL WITH DRIVER DISPLAY
- 1 DIGITAL VOLTAGE DISPLAY INTEGRAL WITH DRIVER DISPLAY
- 1 ELECTRIC FUEL GAUGE
- 1 ELECTRIC ENGINE OIL PRESSURE GAUGE
- 1 ELECTRICAL ENGINE COOLANT TEMPERATURE GAUGE

### **ENGINE AND EQUIPMENT**

- 1 CUM B6.7 220 HP @ 2400 RPM, 2600 GOV, 600 LB/FT @ 1600 RPM
- 1 ANTI-FREEZE TO -34F, OAT (NITRITE AND SILICATE FREE)EXT LIFE
- 1 ENGINE-MOUNTED OIL CHECK AND FILL
- 1 CUMMINS 18.7 CFM COMPRESSOR
- 1 CUMMINS SPIN ON FUEL FILTER
- 1 STANDARD ENGINE OIL
- 1 FULL FLOW OIL FILTER
- 1 DETROIT F/W SEP WWIF SENSOR & HAND PRIMER
- 1 CUMMINS ENG INTEGRAL BRAKE W/VARI TURBO,STOP LAMP ON AT 5%
- 1 ALUMINUM FLYWHEEL HOUSING
- 1 STANDARD OIL PAN
- 1 ELECTRONIC ENGINE, INTEGRAL WARNING & DERATE PROTECTION SYST
- 1 DELCO 12V 38MT HD STARTER WITH INTEGRATE
- 1 GATES BLUE STRIPE COOLANT HOSES
- 1 CONSTANT TORQUE BREEZE CLAMPS ON 1" IN DIA GREATER, SS C
- 1 DONALDSON ONE-STAGE AIR CLEANER
- 1 700 SQUARE INCH ALUMINUM RADIATOR
- 1 VISCOUS FAN DRIVE
- 1 ELECTRONIC TACHOMETER 3000 RPM
- 1 DIGITAL TRANS OIL TEMP IN DRIVER DISPLAY

### **TRANSMISSION AND EQUIPMENT**

- 1 ALLISON 2500 PTS AUTOMATIC TRANSMISSION
- 1 ALLISON VOCATIONAL PACKAGE 354 - FIFTH GEN



- 1 TRANSMISSION OIL CHECK AND FILL
- 1 SYNTHETIC 50W TRANSMISSION LUBE (TES-295 COMPLIANT)
- 1 WATER TO OIL TRANSMISSION COOLER - IN RADIATOR END TANK
- 1 6M1-PROMARY MODE GEARS
- 1 FUELSENSE GHG

### **WHEELS AND TIRES**

- 1 FRONT BRIDGESTONE ECOPIA R268 11R22.5 14 PLY TIRES
- 1 REAR BRIDGESTONE ECOPIA R268 11R22.5 14 PLY TIRES
- 1 BENDIX SMARTIRE MONITOR SYSTEM
- 1 TIRE/WHEEL BALANCING-LEAD FREE WEIGHTS
- 1 ACCURIDE PK-BLACK21 POWDER BLACK WHEEL (N0001H)- FRONT
- 1 ACCURIDE PKBLK21 POWDER BLACK WHEEL (N0001H) - REAR

### **OTHER TYPE**

#### **Electrical - body**

- 1 ELEC-(2) USB OUTLET LS CABINET

#### **PDI**

- 1 ALERT-CUSTOM OPS INSTALLATION
- 1 PDI BOOKRACKS

### **DEALER ADD On's**

#### **EQUIPMENT**

- 1 DOT Vehicle Inspection
- 1 REI (5-cam) system
- 1 NO TWO-WAY RADIO

### **List all Co-Op choices:**

- ▶ BUYBOARD #722-23: ADD \$800 PER PO
- ▶ SOURCEWELL: ADD \$750 PER BUS
- ▶ TIPS #240901: ADD \$350 PER PO
- ▶ REGION 7: NO CHARGE IF ISD IS A MEMBER

**Meets all FMVSS requirements in effect at the time of manufacture.**

**Customer Is Member Following CO-OP:**  
TASB / Buyboard

**\*Co-op Price Per Each \$ 175,500.00**

**Delivery: Allow apx 180 business days a.r.o.**

SELECT YOUR CHOICE OF CO-OP:

**\*BuyBoard Requires Additional \$800.00 Fee Per PO**

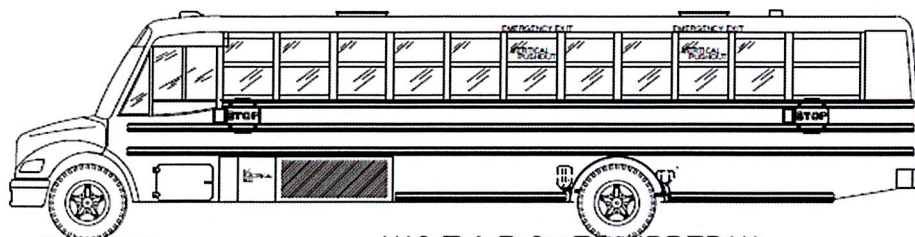
**Additional options you may want to consider:**

\$

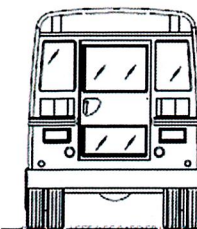
**Terms and Conditions:**

**Quote Expires: 30 DAYS**

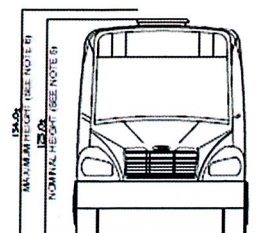
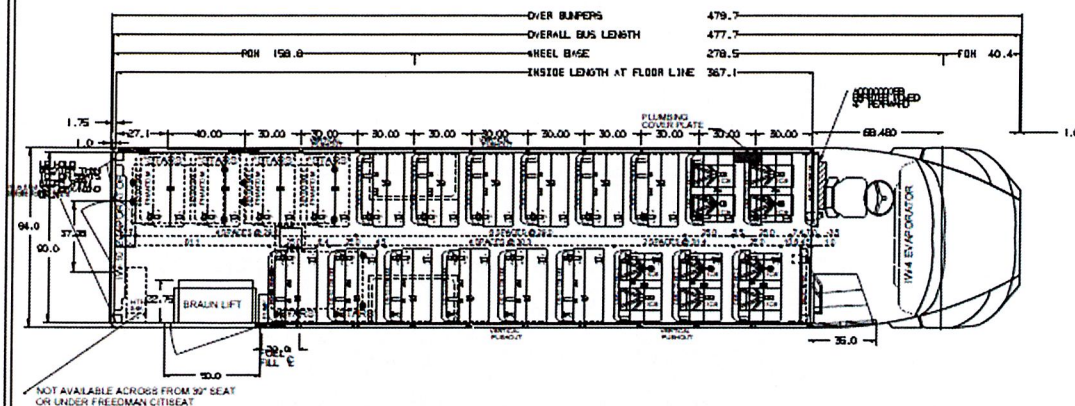
SEATING CAPACITY: 58 + DRIVER



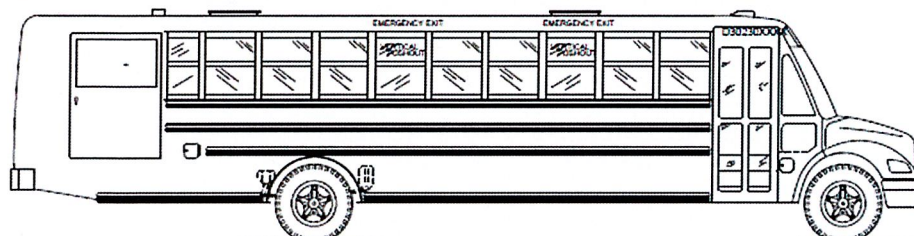
\*\*\*STARS EQUIPPED\*\*\*



CAUTION: RIGHT SIDE BARRIER IS NOT IN STANDARD LOCATION, SEE SEATING PLAN.



134.04  
135.04



Model: Saf-T-Liner C2  
Quote Number: 418268  
Locality: TX

## GENERAL NOTES

- [illegible]

10/10/10 10:10:10

PLAN AND ELEVATION  
BODY 341TS

201 20 25 26 27 1 2 3 4 5 6 7 8 9 10 11 12 13 14 15 16 17 18 19 20 21 22 23 24 25 26 27 28 29 30 31 32 33 34 35 36 37 38 39 40 41 42 43 44 45 46 47 48 49 50 51 52 53 54 55 56 57 58 59 60 61 62 63 64 65 66 67 68 69 70 71 72 73 74 75 76 77 78 79 80 81 82 83 84 85 86 87 88 89 90 91 92 93 94 95 96 97 98 99 100 101 102 103 104 105 106 107 108 109 110 111 112 113 114 115 116 117 118 119 120 121 122 123 124 125 126 127 128 129 130 131 132 133 134 135 136 137 138 139 140 141 142 143 144 145 146 147 148 149 150 151 152 153 154 155 156 157 158 159 160 161 162 163 164 165 166 167 168 169 170 171 172 173 174 175 176 177 178 179 180 181 182 183 184 185 186 187 188 189 190 191 192 193 194 195 196 197 198 199 200 201 202 203 204 205 206 207 208 209 210 211 212 213 214 215 216 217 218 219 220 221 222 223 224 225 226 227 228 229 230 231 232 233 234 235 236 237 238 239 240 241 242 243 244 245 246 247 248 249 250 251 252 253 254 255 256 257 258 259 260 261 262 263 264 265 266 267 268 269 270 271 272 273 274 275 276 277 278 279 280 281 282 283 284 285 286 287 288 289 290 291 292 293 294 295 296 297 298 299 300 301 302 303 304 305 306 307 308 309 310 311 312 313 314 315 316 317 318 319 320 321 322 323 324 325 326 327 328 329 330 331 332 333 334 335 336 337 338 339 340 341 342 343 344 345 346 347 348 349 350 351 352 353 354 355 356 357 358 359 360 361 362 363 364 365 366 367 368 369 370 371 372 373 374 375 376 377 378 379 380 381 382 383 384 385 386 387 388 389 390 391 392 393 394 395 396 397 398 399 400 401 402 403 404 405 406 407 408 409 410 411 412 413 414 415 416 417 418 419 420 421 422 423 424 425 426 427 428 429 430 431 432 433 434 435 436 437 438 439 440 441 442 443 444 445 446 447 448 449 450 451 452 453 454 455 456 457 458 459 460 461 462 463 464 465 466 467 468 469 470 471 472 473 474 475 476 477 478 479 480 481 482 483 484 485 486 487 488 489 490 491 492 493 494 495 496 497 498 499 500 501 502 503 504 505 506 507 508 509 510 511 512 513 514 515 516 517 518 519 520 521 522 523 524 525 526 527 528 529 530 531 532 533 534 535 536 537 538 539 540 541 542 543 544 545 546 547 548 549 550 551 552 553 554 555 556 557 558 559 560 561 562 563 564 565 566 567 568 569 570 571 572 573 574 575 576 577 578 579 580 581 582 583 584 585 586 587 588 589 590 591 592 593 594 595 596 597 598 599 600 601 602 603 604 605 606 607 608 609 610 611 612 613 614 615 616 617 618 619 620 621 622 623 624 625 626 627 628 629 630 631 632 633 634 635 636 637 638 639 640 641 642 643 644 645 646 647 648 649 650 651 652 653 654 655 656 657 658 659 660 661 662 663 664 665 666 667 668 669 670 671 672 673 674 675 676 677 678 679 680 681 682 683 684 685 686 687 688 689 690 691 692 693 694 695 696 697 698 699 700 701 702 703 704 705 706 707 708 709 710 711 712 713 714 715 716 717 718 719 720 721 722 723 724 725 726 727 728 729 730 731 732 733 734 735 736 737 738 739 740 741 742 743 744 745 746 747 748 749 750 751 752 753 754 755 756 757 758 759 760 761 762 763 764 765 766 767 768 769 770 771 772 773 774 775 776 777 778 779 780 781 782 783 784 785 786 787 788 789 790 791 792 793 794 795 796 797 798 799 800 801 802 803 804 805 806 807 808 809 810 811 812 813 814 815 816 817 818 819 820 821 822 823 824 825 826 827 828 829 830 831 832 833 834 835 836 837 838 839 840 841 842 843 844 845 846 847 848 849 850 851 852 853 854 855 856 857 858 859 860 861 862 863 864 865 866 867 868 869 870 871 872 873 874 875 876 877 878 879 880 881 882 883 884 885 886 887 888 889 890 891 892 893 894 895 896 897 898 899 900 901 902 903 904 905 906 907 908 909 910 911 912 913 914 915 916 917 918 919 920 921 922 923 924 925 926 927 928 929 930 931 932 933 934 935 936 937 938 939 940 941 942 943 944 945 946 947 948 949 950 951 952 953 954 955 956 957 958 959 960 961 962 963 964 965 966 967 968 969 970 971 972 973 974 975 976 977 978 979 980 981 982 983 984 985 986 987 988 989 990 991 992 993 994 995 996 997 998 999 1000 1001 1002 1003 1004 1005 1006 1007 1008 1009 1010 1011 1012 1013 1014 1015 1016 1017 1018 1019 1020 1021 1022 1023 1024 1025 1026 1027 1028 1029 1030 1031 1032 1033 1034 1035 1036 1037

SCALE 3/8"=12"	S	911160
----------------	---	--------

ALL DIMENSIONS & FIGURES ARE REFERENCE ONLY!!



### Additional C2 Warranty Information Below:

TBB Basic Body (Type C)	3 Years	50,000 mi/80 500 km
TBB A/C System	3 Years	50,000 mi/80 500 km
TBB Manufactured Components	3 Years	50,000 mi/80 500 km
TBB Miscellaneous (Accessories, Compartments, etc.)	3 Years	50,000 mi/80 500 km
TBB Paint	5 Years	Unlimited
TBB Passenger Doors	3 Years	50,000 mi/80 500 km
TBB Seat and Barrier Frames	5 Years	Unlimited
TBB Seats, Barriers, and Stanchions	3 Years	50,000 mi/80 500 km
TBB Storm Glass and Windows	3 Years	50,000 mi/80 500 km
TBB Structure and Sheet Metal	5 Years	Unlimited
TBB Towing	2 Years	Unlimited

Basic Chassis	3 Years	50,000 mi/80 500 km
Battery	1 Year	100,000 mi/161 000 km
Brightwork	6 Months	Unlimited
Corrosion	6 Months	Unlimited
Cowl Corrosion	5 Years	Unlimited
Cowl Structure	5 Years	Unlimited
Crossmembers	5 Years	Unlimited
Diesel Emission 2010 <sup>3</sup>	5 Years	100,000 mi/161 000 km
Frame Rails	5 Years	Unlimited
GHG14 <sup>4</sup> (Light Heavy Duty Trucks)	5 Years	50,000 mi/80 500 km
GHG14 <sup>4</sup> (Medium Heavy Duty to Heavy Heavy Duty Trucks)	5 Years	100,000 mi/161 000 km
GHG14 <sup>4</sup> Tire (File Direct)	2 Years	24,000 mi/38 400 km
Paint, Chassis	6 Months	Unlimited
Paint, Hood and Cowl <sup>5</sup>	5 Years	Unlimited
Towing/Roadside Assistance <sup>6</sup>	2 Years	Unlimited
Transfer Case	4 Years	Unlimited
Transmission	5 Years	Unlimited
Front Axle(s) <sup>7</sup>		
Detroit (File Direct)	5 Years	Unlimited
Non-Detroit	4 Years	Unlimited
Rear Axle(s) <sup>8</sup>		
Detroit (File Direct)	5 Years	Unlimited
Non-Detroit	4 Years	Unlimited