



Update on Changes in District Attendance

Study Session

Tassi Call

Associate Superintendent for Elementary Education

Matt Munger

Associate Superintendent for Secondary Education

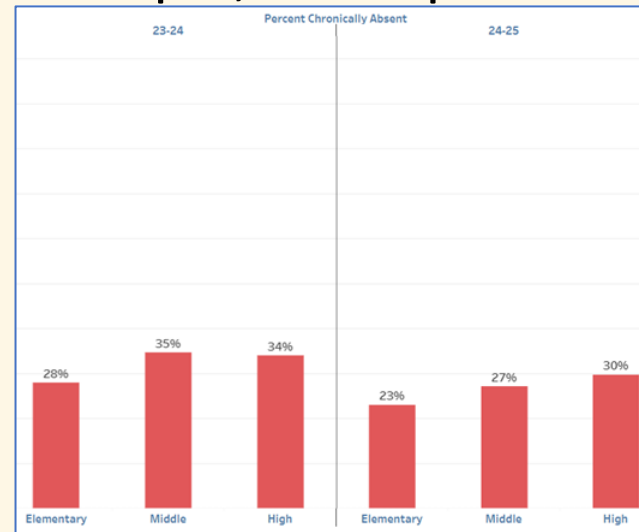
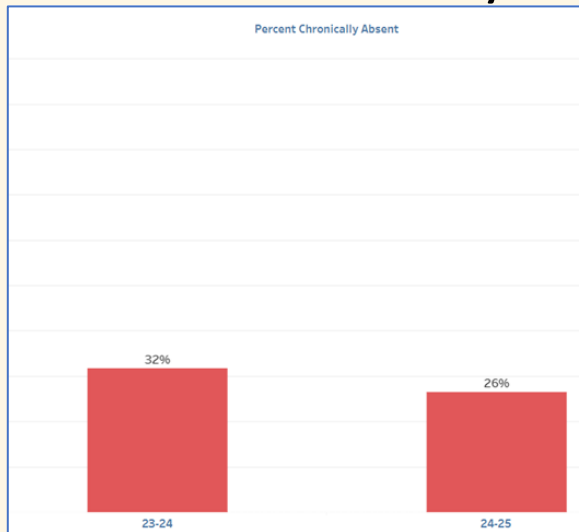




Chronic Absenteeism

Across Arizona absences, specifically chronic absences, are twice as high as those prior to the COVID pandemic. In 2025, both the Helios Education Foundation and ReadOn Arizona reported that 24% of students, in grades 1st through 8th and 28% of high school students, primarily in 9th grade, are chronically absent. Data released by the US Department of Education in 2025 indicates that 41% of students in public schools, specifically in Arizona, are chronically absent*.

* Chronic absenteeism is defined in Arizona and the U.S. as absences exceeding 10% of the school year. In Amphi, this equates to 17 school days.





Changes in Attendance Procedure



In July 2025, District administration updated Amphitheater's Attendance Procedure (5-103.A) to go into effect in the 2025-26 school year.



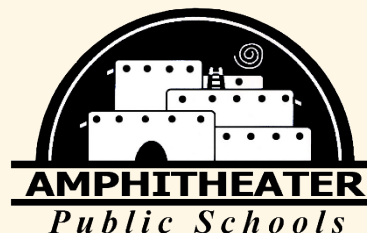
The revised Procedure includes:

- Language regarding required steps Arizona school districts must comply with per Statute, i.e. reporting truancy to Pima County Attorney's Office
- Verbiage pertaining to loss of privileges and/or academic credit
- Due process notification to parents that includes Attendance Probation Contracts and, if unresolved, Appeal Documentation for Academic Credit



New Communication to Parents/Guardians:

- Weekly emails to parents with information on grades, absences, and tardies
- 5, 7, 10, and 13 day letters

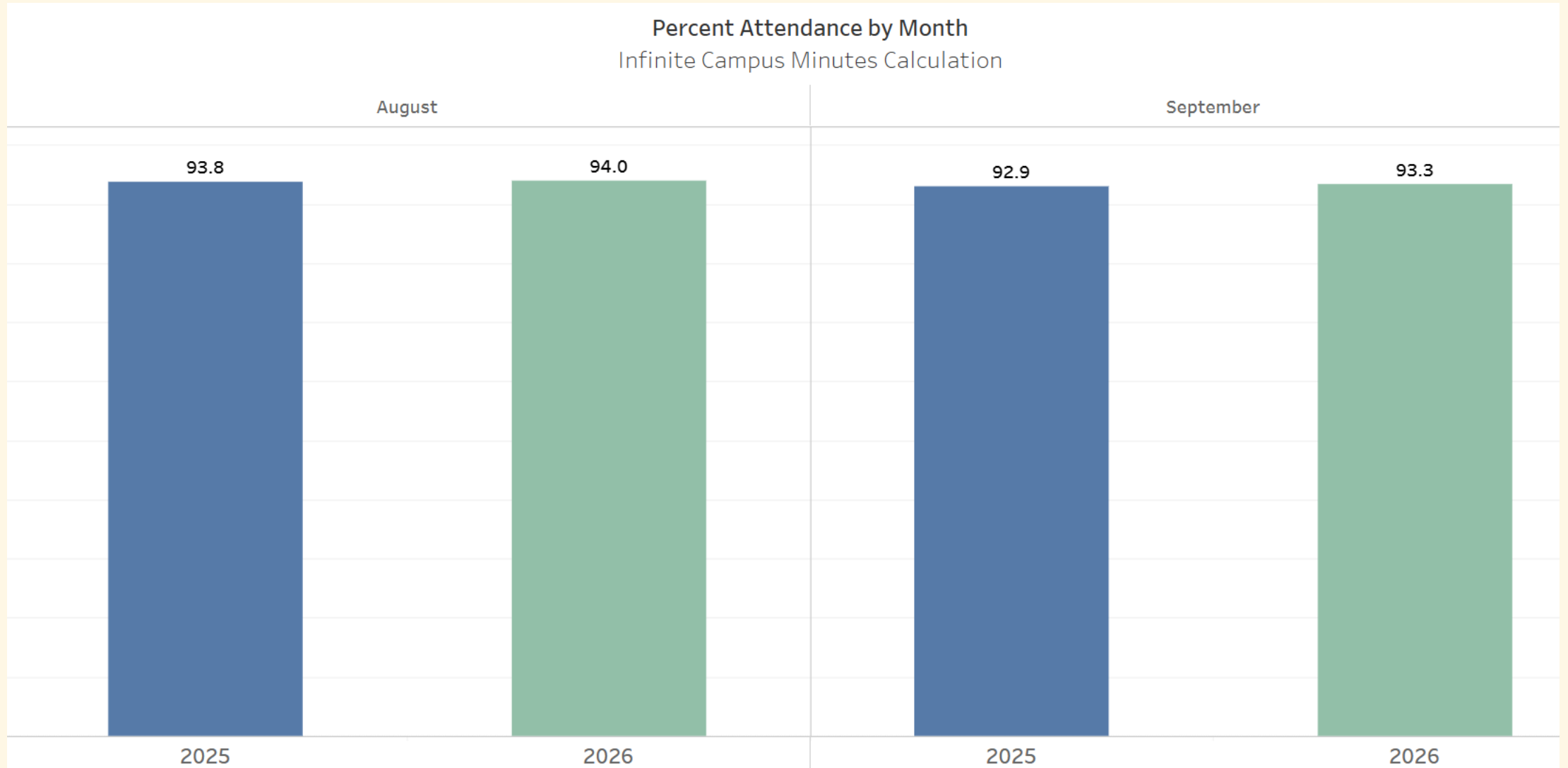




Changes in Student Attendance

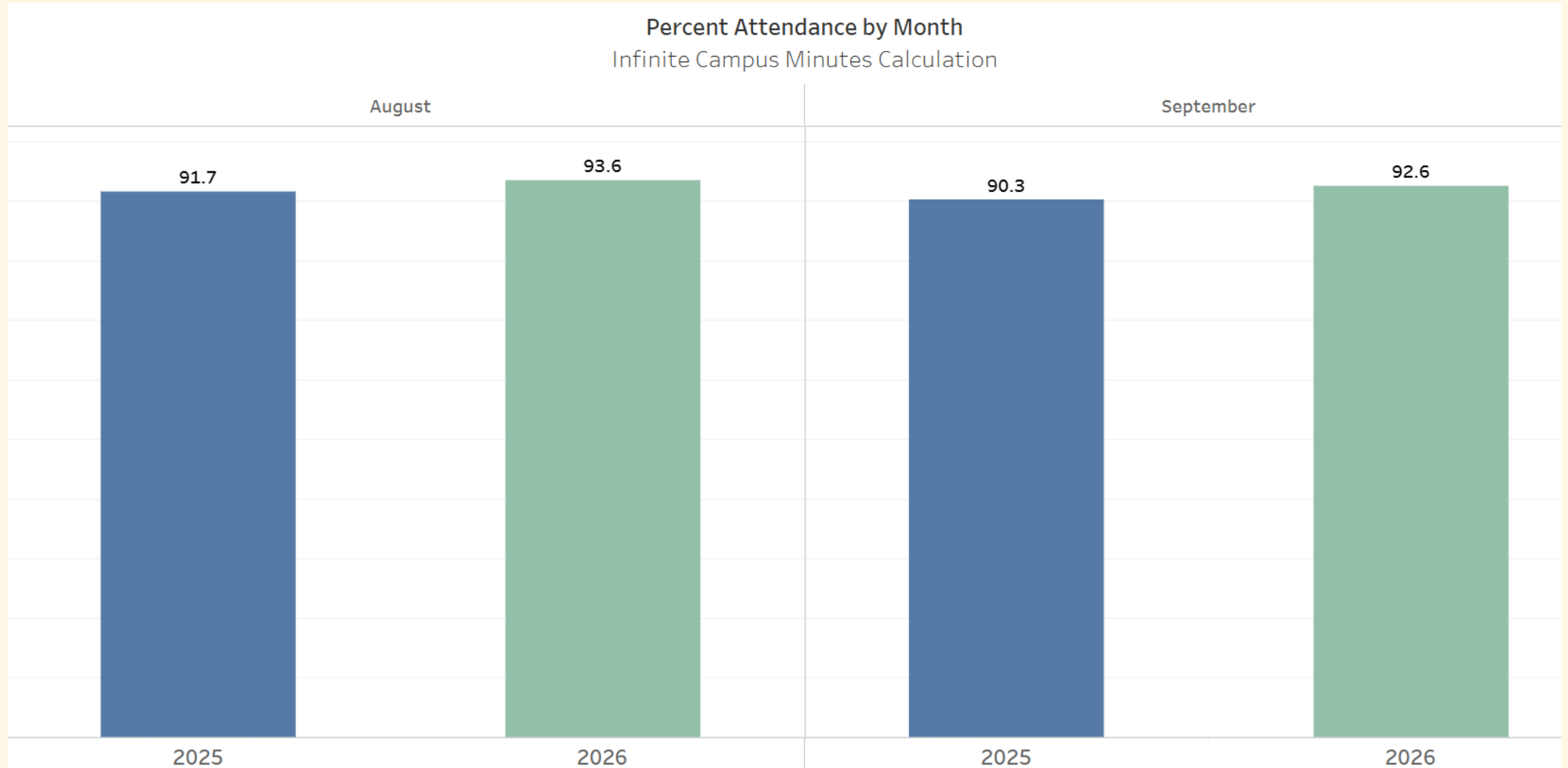


To-Date Comparison of Changes



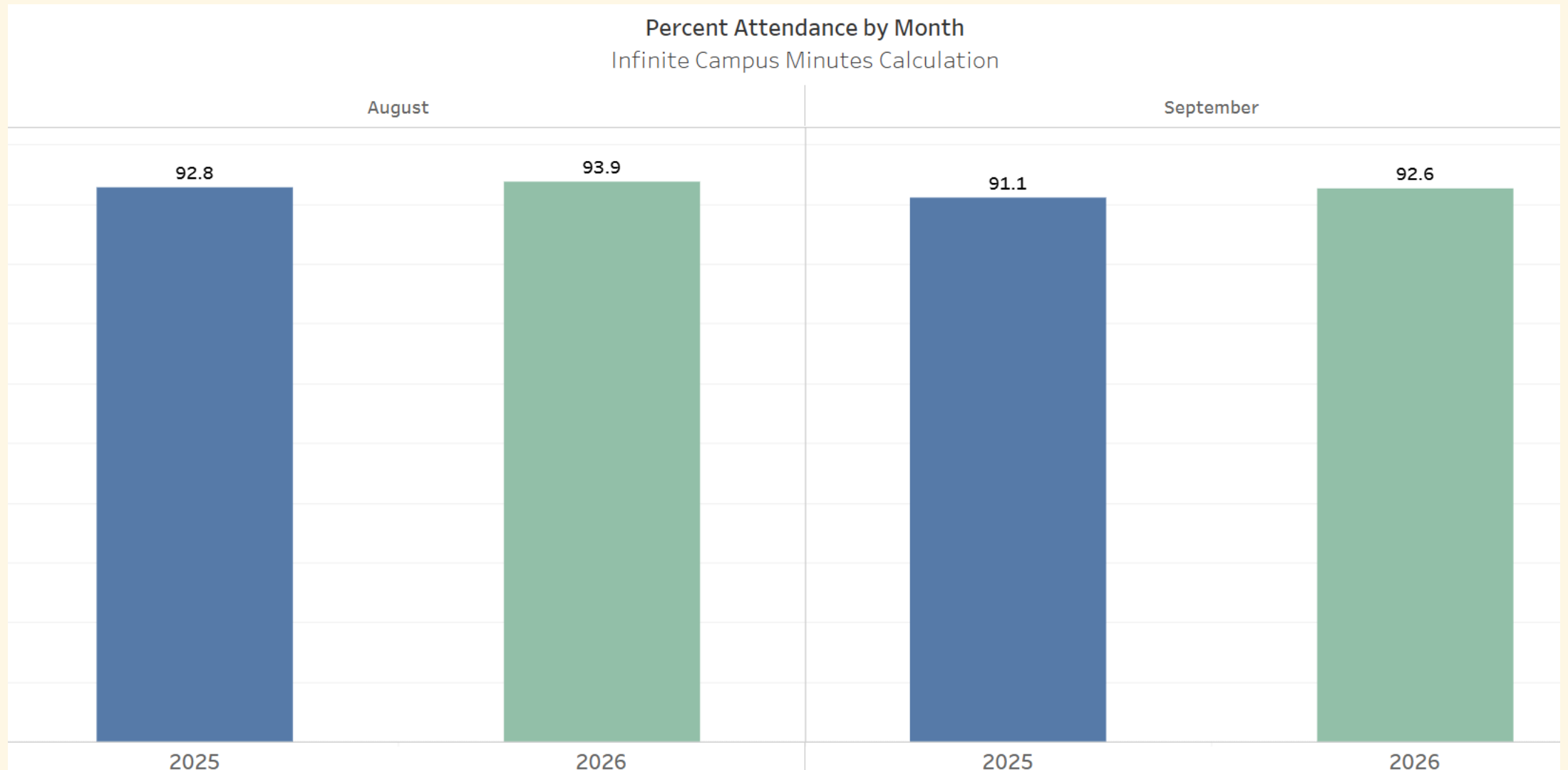


To-Date Comparison of Changes (ES)



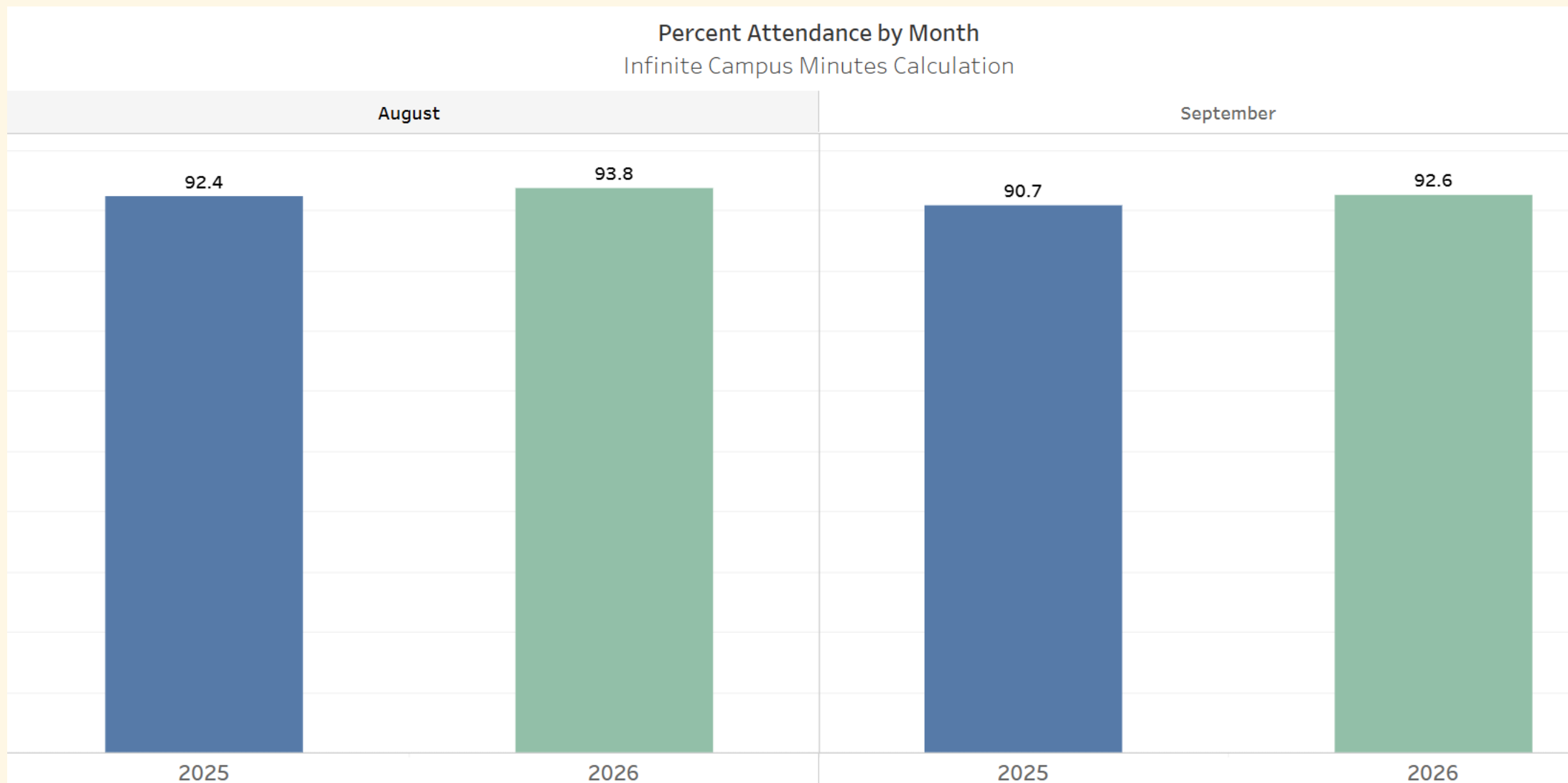


To-Date Comparison of Changes (MS)



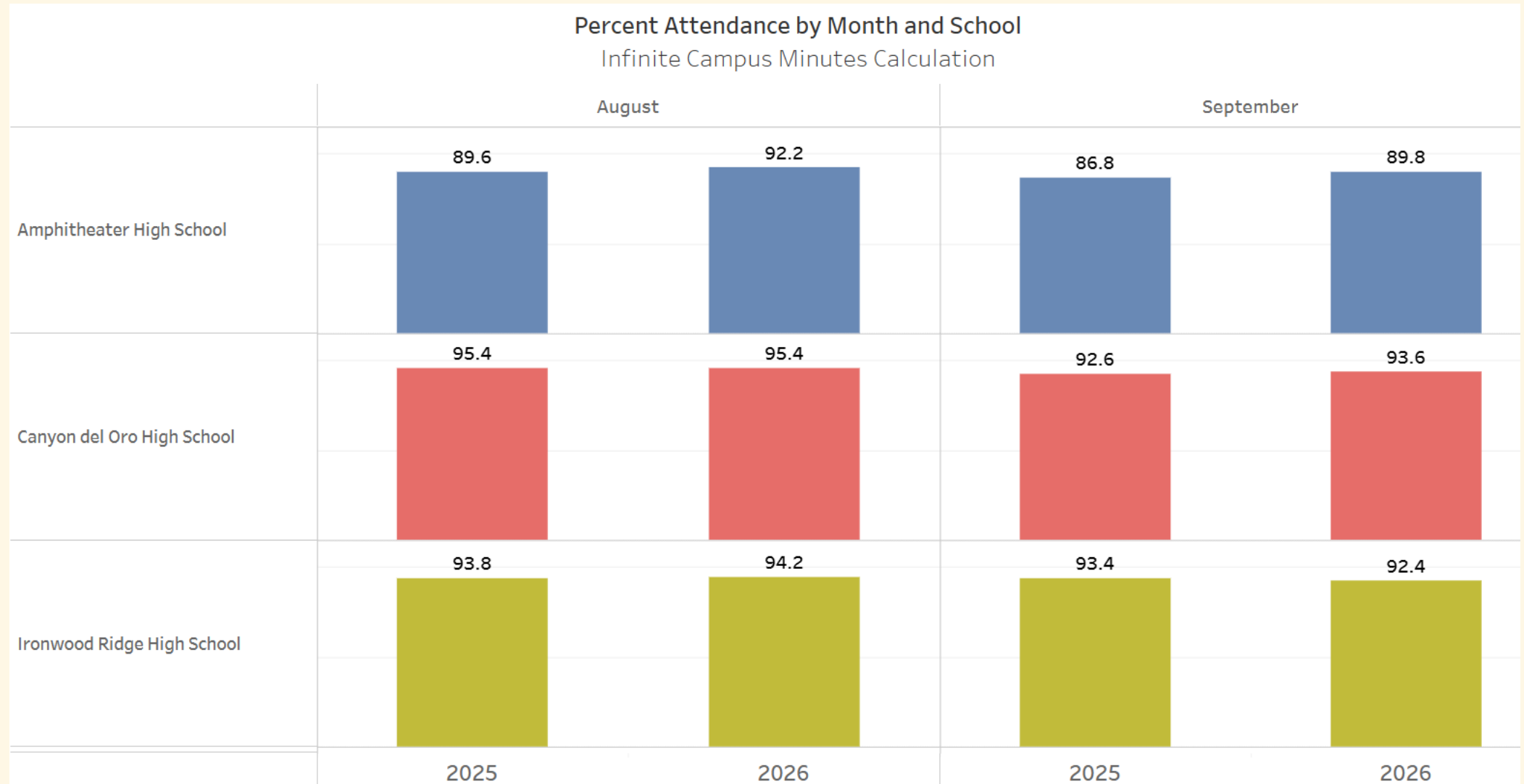


To-Date Comparison of Changes (HS)





To-Date Comparison of Changes





To-Date Comparison of Changes

Percent Attendance by Month and School
Infinite Campus Minutes Calculation

	August		September	
	2025	2026	2025	2026
Amphitheater High School	89.6	92.2	86.8	89.8
Canyon del Oro High School	95.4	95.4	92.6	93.6
Ironwood Ridge High School	93.8	94.2	93.4	92.4
Rillito School	88.1	92.7	88.3	94.4



To-Date Comparison of Changes

Percent Attendance by Month and School Infinite Campus Minutes Calculation				
	August		September	
	2025	2026	2025	2026
Amphitheater Middle School	91.2	93.0	89.6	90.4
Coronado K-8	92.6	94.7	93.6	93.2
Cross Middle School	95.2	95.1	94.1	94.9
La Cima Middle School	91.7	91.6	89.9	90.8
Rillito School	91.0	93.6	83.9	90.4
Wilson K-8	95.3	95.2	95.3	95.9



Questions?