

Churchill Hs

QTY	DESCRIPTION	SEATS	RISE	SPAN
Bank #1	17 Row Friction Power Wall Attached 94'-6 7/16" W/ 10" Universal Contoured Seat Module -06 Red W/ 10" Universal Contoured Seat Module -22 White W/ 10" Universal Contoured Seat Module -08 Black	823	10.25	26
4	17 Row Foot Level Aisles W/ Quarter Turn Rail			
4	17 Row Intermediate Steps			
8	1 Row Recoverable 3'-0 1/4" Notchout			
1	17 Row Self-Storing End Rails			
Bank #2	17 Row Friction Power Wall Attached 94'-6 7/16" W/ 10" Universal Contoured Seat Module -06 Red W/ 10" Universal Contoured Seat Module -22 White W/ 10" Universal Contoured Seat Module -08 Black	823	10.25	30
4	17 Row Foot Level Aisles W/ Quarter Turn Rail			
4	17 Row Intermediate Steps			
1	1 Row Recoverable 3'-0 1/4" Notchout W/ Front Rail			
5	1 Row Recoverable 3'-0 1/4" Notchout			
1	17 Row Self-Storing End Rails			

NOTES:

TOTAL SEATS

1646



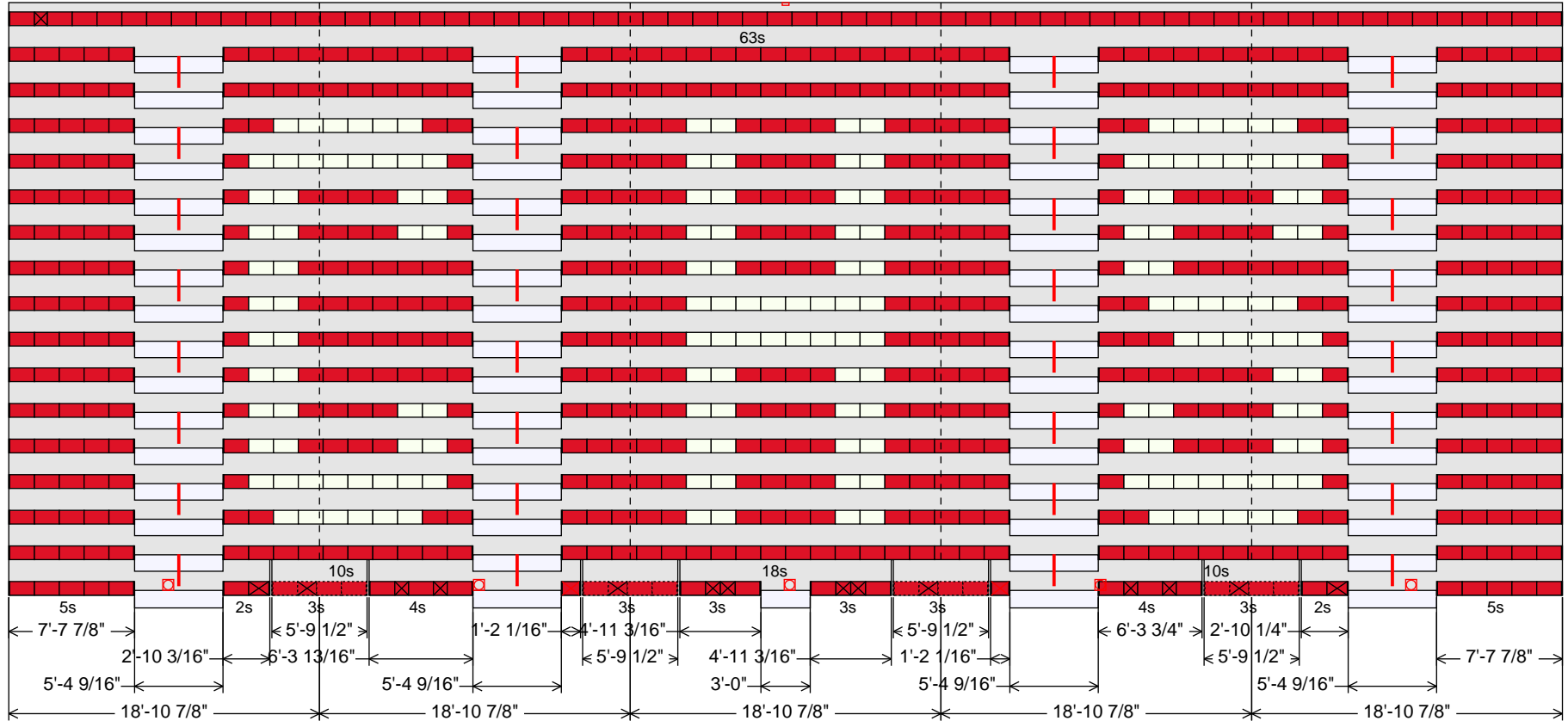
5981 East Cork Street, PO Box 2107, Kalamazoo, MI 49003-2107
telephone (269) 349-1521 fax (269) 349-6530

POWER REQUIREMENTS:

1. Wiring and non-fusible safety switch(es) suitable for the line voltage to be provided by electrical contractor or others with branch circuit protection to each not exceeding 15 amps.
2. Branch circuit protection devices by others to be accessible when platforms are closed.
3. Verify electrical information:
Circuit 3 Phase, 208-230 Volts, 60 Hertz.
Each 1/2 Horse Power Motor Draws 2.0-2.2 amps. Full Load.
Motors run simultaneously.
4. Junction box(es) by electrical contractor to be mounted at locations TBD, 5' AFF. Typical location shall be at section joints.

Churchill Hs

Bank 1 - 94'-6 7/16" Friction Power
 Building Code: NFPA 101 2015
 96'-2 7/16" Clear Dimension
 17 Row - 26 Span - 10.25 Rise
 823 seats (CM10)

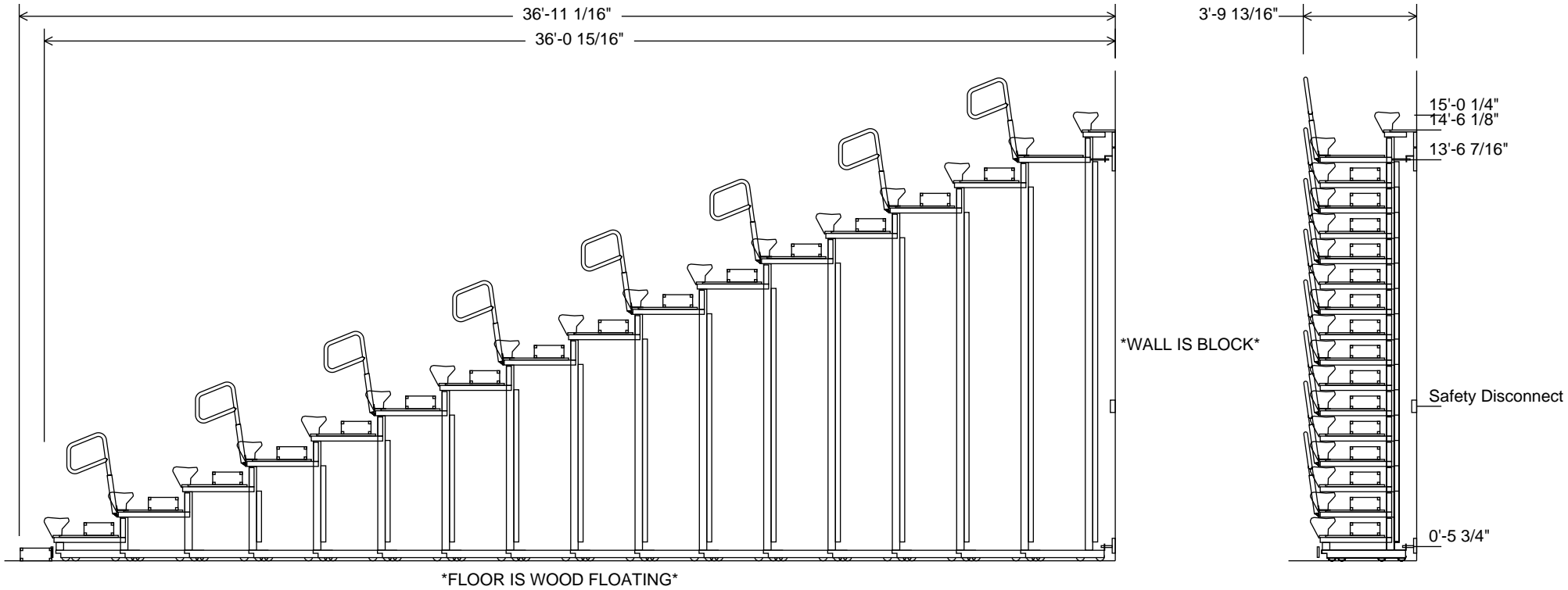


5981 East Cork Street, PO Box 2107, Kalamazoo, MI 49003-2107
 telephone (269) 349-1521 fax (269) 349-6530

Drawings produced by this program are only as good as the information provided. These drawings are PRELIMINARY only.
 All drawings created are subject to Interkal approval for design and construction capability.
 Printed: February 23, 2021 v2.7.5

Churchill Hs

Bank 1 - 94'-6 7/16" Friction Power
Building Code: NFPA 101 2015
17 Row - 26 Span - 10.25 Rise - Wall Attached
823 seats (CM10)
18'-9 15/16" Court To Step Dimension
19'-8 1/16" Court To First Row Dimension



5981 East Cork Street, PO Box 2107, Kalamazoo, MI 49003-2107
telephone (269) 349-1521 fax (269) 349-6530

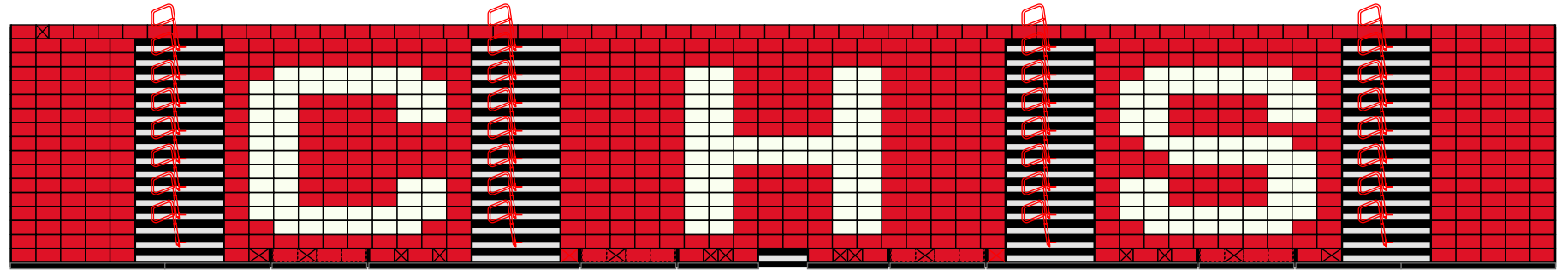
Drawings produced by this program are only as good as the information provided. These drawings are PRELIMINARY only.
All drawings created are subject to Interkal approval for design and construction capability.
Printed: February 23, 2021 v2.7.5

POWER REQUIREMENTS:

1. Wiring and non-fusible safety switch(es) suitable for the line voltage to be provided by electrical contractor or others with branch circuit protection to each not exceeding 15 amps.
2. Branch circuit protection devices by others to be accessible when platforms are closed.
3. Verify electrical information:
Circuit 3 Phase, 208-230 Volts, 60 Hertz.
Each 1/2 Horse Power Motor Draws 2.0-2.2 amps. Full Load.
Motors run simultaneously.
4. Junction box(es) by electrical contractor to be mounted at locations TBD, 5' AFF.
Typical location shall be at section joints.

Churchill Hs

Bank 1 - 94'-6 7/16" Friction Power
Building Code: NFPA 101 2015
96'-2 7/16" Clear Dimension
17 Row - 26 Span - 10.25 Rise
823 seats (CM10)



5981 East Cork Street, PO Box 2107, Kalamazoo, MI 49003-2107
telephone (269) 349-1521 fax (269) 349-6530

Drawings produced by this program are only as good as the information provided. These drawings are PRELIMINARY only.
All drawings created are subject to Interkal approval for design and construction capability.
Printed: February 23, 2021 v2.7.5

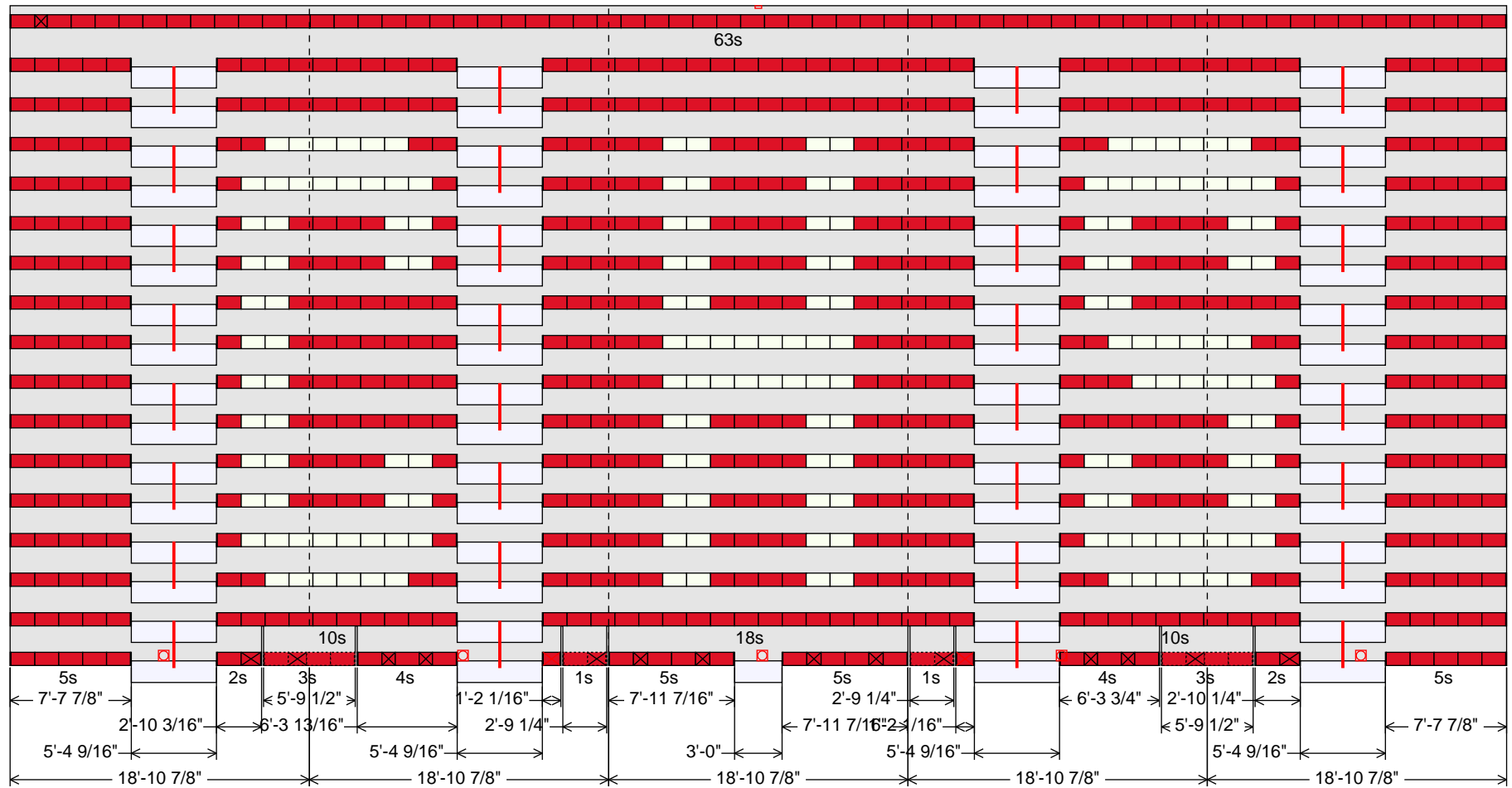
Front Elevation View

POWER REQUIREMENTS:

1. Wiring and non-fusible safety switch(es) suitable for the line voltage to be provided by electrical contractor or others with branch circuit protection to each not exceeding 15 amps.
2. Branch circuit protection devices by others to be accessible when platforms are closed.
3. Verify electrical information:
Circuit 3 Phase, 208-230 Volts, 60 Hertz.
Each 1/2 Horse Power Motor Draws 2.0-2.2 amps. Full Load.
Motors run simultaneously.
4. Junction box(es) by electrical contractor to be mounted at locations TBD, 5' AFF.
Typical location shall be at section joints.

Churchill Hs

Bank 2 - 94'-6 7/16" Friction Power
 Building Code: NFPA 101 2015
 96'-2 7/16" Clear Dimension
 17 Row - 30 Span - 10.25 Rise
 823 seats (CM10)

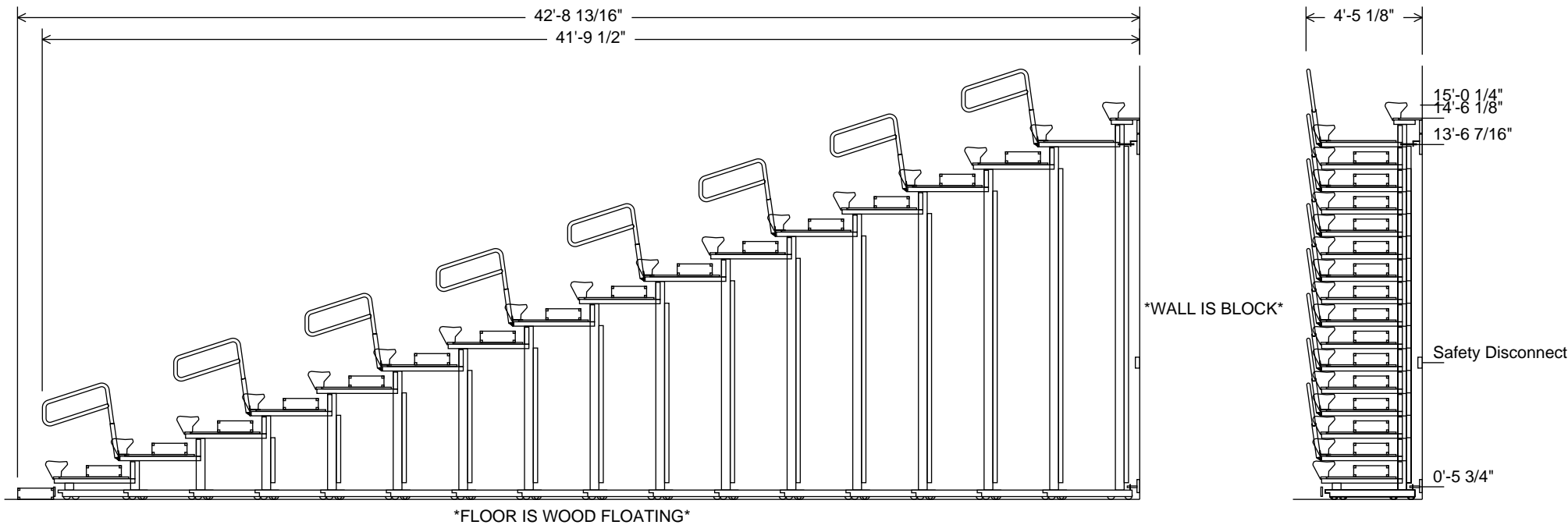


5981 East Cork Street, PO Box 2107, Kalamazoo, MI 49003-2107
 telephone (269) 349-1521 fax (269) 349-6530

Drawings produced by this program are only as good as the information provided. These drawings are PRELIMINARY only.
 All drawings created are subject to Interkal approval for design and construction capability.
 Printed: February 23, 2021 v2.7.5

Churchill Hs

Bank 2 - 94'-6 7/16" Friction Power
Building Code: NFPA 101 2015
17 Row - 30 Span - 10.25 Rise - Wall Attached
823 seats (CM10)
22'-3 3/16" Court To Step Dimension
23'-2 1/2" Court To First Row Dimension



5981 East Cork Street, PO Box 2107, Kalamazoo, MI 49003-2107
telephone (269) 349-1521 fax (269) 349-6530

Drawings produced by this program are only as good as the information provided. These drawings are PRELIMINARY only.
All drawings created are subject to Interkal approval for design and construction capability.
Printed: February 23, 2021 v2.7.5

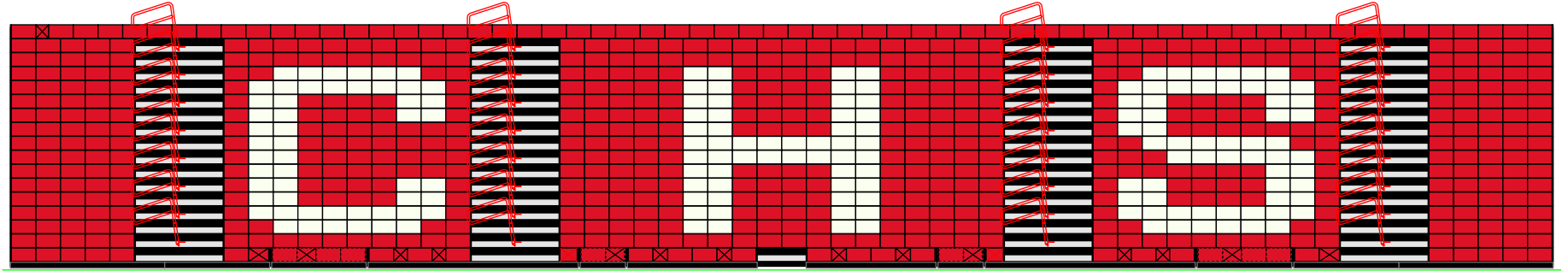
Side Elevation View A2

POWER REQUIREMENTS:

1. Wiring and non-fusible safety switch(es) suitable for the line voltage to be provided by electrical contractor or others with branch circuit protection to each not exceeding 15 amps.
2. Branch circuit protection devices by others to be accessible when platforms are closed.
3. Verify electrical information:
Circuit 3 Phase, 208-230 Volts, 60 Hertz.
Each 1/2 Horse Power Motor Draws 2.0-2.2 amps. Full Load.
Motors run simultaneously.
4. Junction box(es) by electrical contractor to be mounted at locations TBD, 5' AFF. Typical location shall be at section joints.

Churchill Hs

Bank 2 - 94'-6 7/16" Friction Power
Building Code: NFPA 101 2015
96'-2 7/16" Clear Dimension
17 Row - 30 Span - 10.25 Rise
823 seats (CM10)

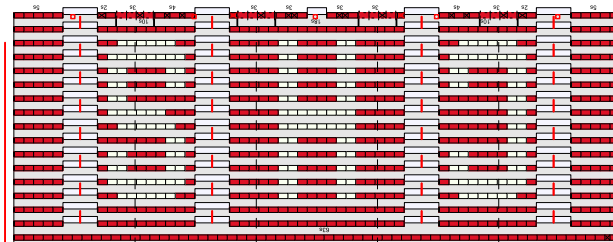
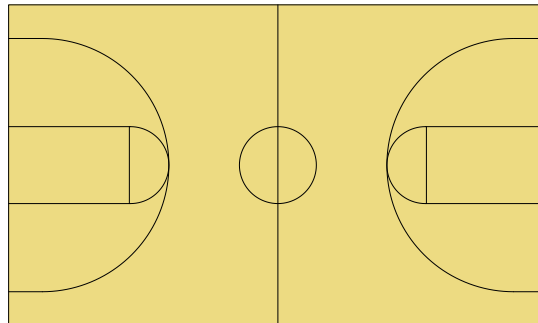


5981 East Cork Street, PO Box 2107, Kalamazoo, MI 49003-2107
telephone (269) 349-1521 fax (269) 349-6530

Drawings produced by this program are only as good as the information provided. These drawings are PRELIMINARY only.
All drawings created are subject to Interkal approval for design and construction capability.
Printed: February 23, 2021 v2.7.5

Front Elevation View

Churchill Hs
Gymnasium 1
Building Code: NFPA 101 2015



5981 East Cork Street, PO Box 2107, Kalamazoo, MI 49003-2107
telephone (269) 349-1521 fax (269) 349-6530

Drawings produced by this program are only as good as the information provided. These drawings are PRELIMINARY only.
All drawings created are subject to Interkal approval for design and construction capability.
Printed: February 23, 2021 v2.7.5