

# Early Childhood

June 18, 2025





**Barika Davis**  
Early Childhood  
Administrative Dean



**Kate Flynn**  
Early Childhood Director



# Who we ARE!



Early Childhood Screening

Birth to Three Home Visiting

Early Childhood Family Education (ECFE)

Preschool

Evaluations

Early Childhood Special Education



# Program Overview



# B-3, Evaluation and Special Education Team





ECFE



# Preschool



# Year End Highlights





# LETRS Learning

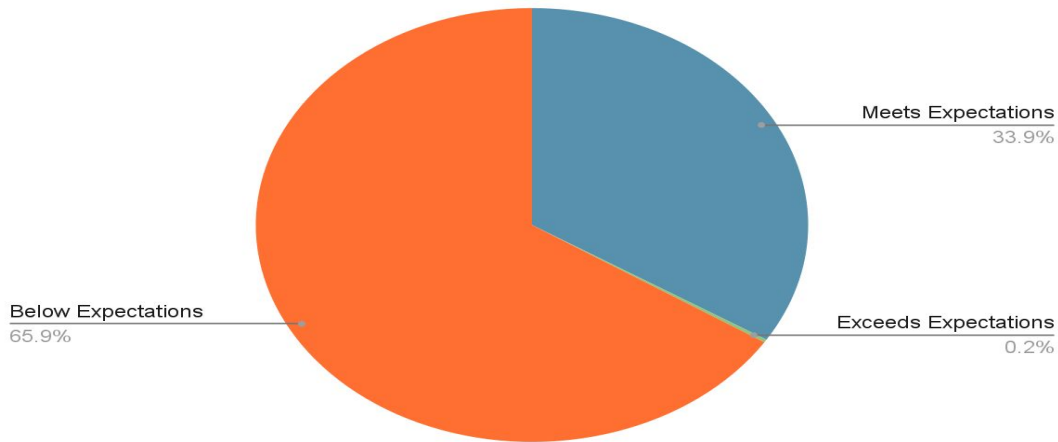




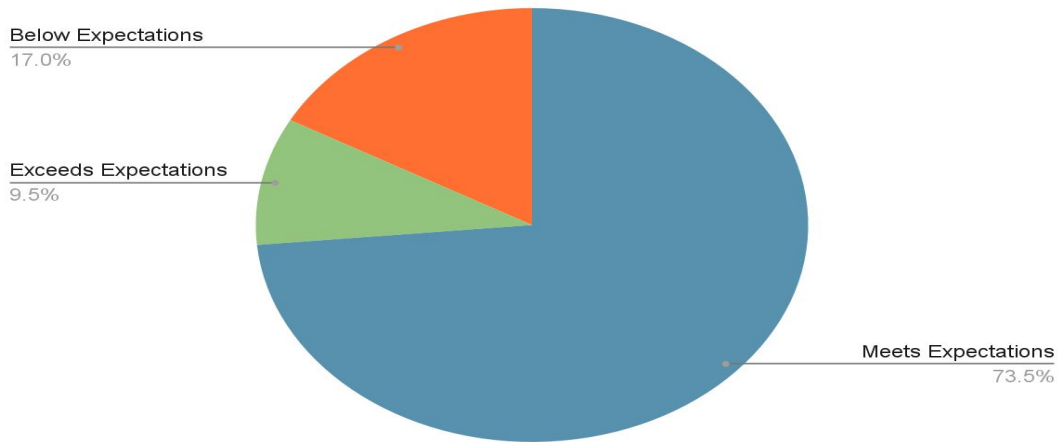
# School Readiness Outcomes



Fall 2024/2025 TS-Gold Literacy Data



Spring 2024/2025 TS-Gold Literacy Data



Ready,  
Set,  
School



# Preschool 4 Success





# Family Engagement





# 742 ECFE EXPO



---

September 6<sup>th</sup>, 2025

---

Highlighting the power of Early Childhood Family Education

---

Panel talks on parenting and early childhood

---

Giveaways

---

Live Children's Concert

---

ECFE classroom experiences

---

Community resource booths

# TimberNook





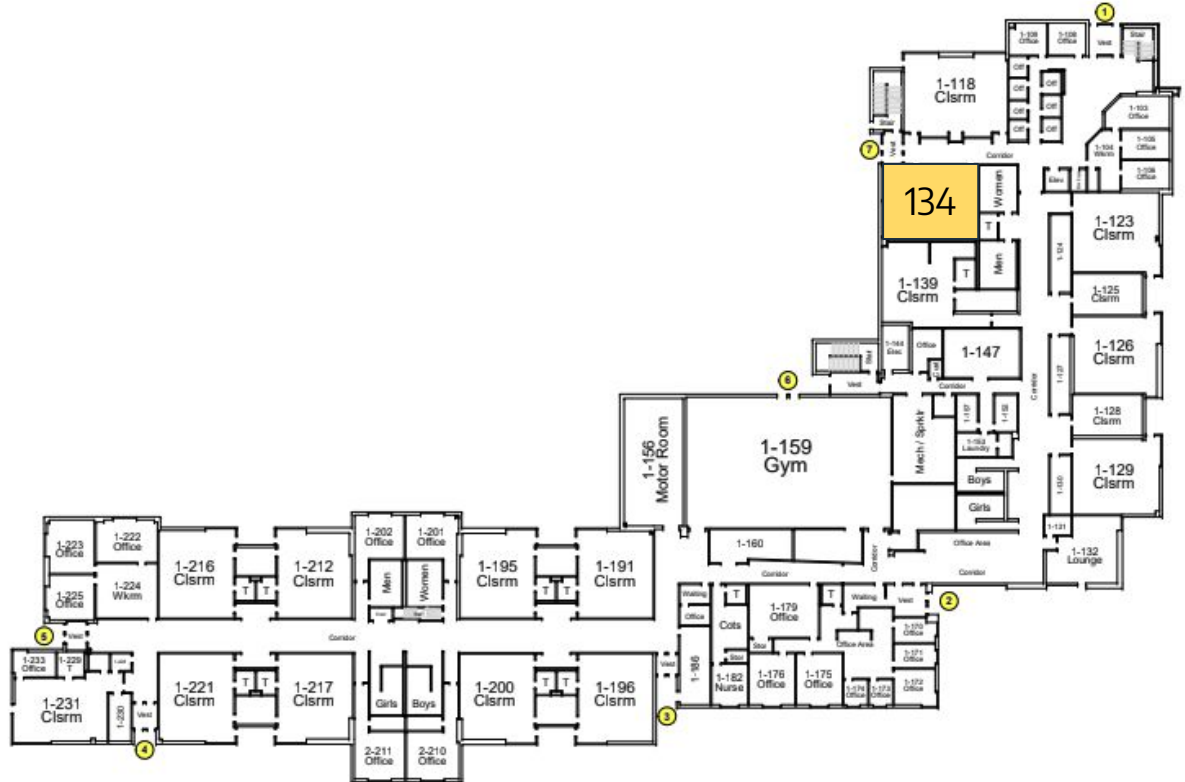
# TimberNook



# Space Update

## We're growing!

- Added 2 special education spaces





24-25

ECFE	Birth-3	PK 3's	PK 4's	Evaluations
651	287	94	474	874

25-26

ECFE	Birth-3	PK 3's	PK 4's	Evaluations
TBD	239	142	305	418

# Enrollment



# Waitlist Numbers & Solutions



## PK 3's

SEPTEMBER	OCTOBER	NOVEMBER	DECEMBER	JANUARY	FEBRUARY	MARCH	APRIL	MAY
60	60	60	53	51	51	51	55	55

## Pk 4's

SEPTEMBER	OCTOBER	NOVEMBER	DECEMBER	JANUARY	FEBRUARY	MARCH	APRIL	MAY
116	116	116	119	129	129	129	123	123

Next Year up to **60** more students will be offered a PK 4's Learning Experience!

**“Early childhood education is the  
key to the betterment of society.”**

**-Maria Montessori**

---

**Questions?**

