



Collin College

2017 Capital Improvement Program
Monthly Report
April 2019

Collin County Community College District

Project Reference: 60541060
Project Number: 60541060

May 07, 2019

Quality information

Prepared byNuria Cortes
Program Documents Manager**Checked by**Nick Fiehler
Program Controls Manager**Approved By**Adrian Grimes
Program Director

Revision History

Revision	Revision date	Details	Authorized	Name	Position
First Publication	May 7, 2019	April '19 Report	Yes	Adrian Grimes	Program Director

Distribution List

# Hard Copies	PDF Required	Association / Company Name
1		Dr. Neil Matkin / Collin College
1		Dr. Bill King / Collin College
1		Jason Parry/ Collin College

Prepared for:

Collin County Community College District
3452 Spur 399
Suite 327
McKinney, TX 75069

Prepared by:

Nuria Cortes
Program Documents Manager
E: ncortes.aecom@collin.edu

AECOM
13355 Noel Road
4th Floor
Dallas TX, 75240
aecom.com

Copyright © 2019 by AECOM

All rights reserved. No part of this copyrighted work may be reproduced, distributed, or transmitted in any form or by any means without the prior written permission of AECOM.

Table of Contents

1.	Introduction.....	5
2.	Executive Summary	5
3.	Scope.....	6
3.1	Phase 1	6
3.2	Phase 2	6
3.3	Phase 3	6
3.4	Phase 4	7
4.	Community	7
4.1	Project Teams	7
4.1.1	Phase 1	7
4.1.2	Phase 2	7
4.1.3	Phase 3	8
4.1.4	Phase 4	8
4.2	Current Personnel Estimate.....	9
4.3	Community Outreach.....	10
5.	Schedule	10
5.1	Program.....	10
5.2	Phase 1	11
5.3	Phase 2	12
5.4	Phase 3	13
5.5	Phase 4	13
6.	Budget.....	14
6.1	Program Summary	14
6.2	Phase 1	15
6.3	Phase 2	16
6.4	Phase 3	17
6.5	Phase 4	17
6.6	Phase A	18
6.7	Building Fund Reimbursement.....	19
7.	Completed Items.....	19
7.1	General Program.....	19
7.2	Procurement	19
7.3	Design	19
7.4	Pre-Construction	20
7.5	Construction.....	20
7.6	Acceptance and Close-Out.....	20
8.	Pending Items.....	20
8.1	General Program.....	20
8.2	Procurement	20
8.3	Design	20
8.4	Pre-Construction	21
8.5	Construction.....	21
8.6	Acceptance and Close-Out.....	21
	Appendix A – Construction Progress Photos	22

1. Introduction

On May 6, 2017, voters approved Collin College's \$600 million bond proposal to facilitate a long-range plan to accommodate the projected population growth in Collin County over the next two decades. The program consists of 4 new campuses, 3 new facilities, 2 repurposed existing spaces, and 3 wayfinding projects (on existing sites). The program is scheduled to be completed in 4 phases over 7 years with projects opening in 2020.

On May 16, 2017, in a special session, the Board of Trustees granted the District President authority to enter and negotiate into contract with AECOM Technical Services, Inc. (AECOM) to provide Program Management Services to the Collin College 2017 Capital Improvement Program. On May 25, 2017, Collin College issued a Notice to Proceed to AECOM. As part of these services, AECOM will deliver a monthly report to provide status and progress of key aspects of the Program.

2. Executive Summary

The Program is progressing as planned with no major issues to report at this time.

Completed and Pending Items

- Design Development phase was completed on April 26th for the Celina Campus and Farmersville Campus
- Building foundation, structural slab and joists for the garage and Academic Building, and garage foundation installations at the Technical Campus are on-going
- Site work, underground utility, building slab installation, and steel erection at the Wylie Campus are on-going
- Schematic Design of the IT Center of Excellence at the Frisco Campus is on-going

Items of close attention

- Construction schedules are being closely monitored to ensure completion of the Phase 1 projects by Fall 2020

Budget Summary

- \$353,873,933 of the \$600,000,000 has been committed to-date in the form of contracts with various vendors. This represents 58.98% of the overall program budget committed.
- \$151,200,641 of the \$353,873,933 committed amount has been expended to-date. This represents 42.73% of the commitments to date and 25.20% of the program budget.

3. Scope

3.1 Phase 1

- Wylie Campus
 - Construction of a campus on a new approximately 97-acre site
 - The campus is planned to include:
 - Campus Commons
 - Learning Resource Center / Library
 - Student Center
- Technical Campus
 - Construction of a Technical Campus on a new 32-acre site in Allen, Texas
 - Programs planned for inclusion include:

Advanced Manufacturing, Automotive, Construction, and Health Science

3.2 Phase 2

- Celina Campus
 - Construction of a campus on a new approximately 75-acre site
 - The campus is planned to include:
 - Student Union / Workforce / Instructional Building
- Farmersville Campus
 - Construction of a campus on a new approximately 76-acre site
 - The campus is planned to include:
 - Student Union / Workforce / Instructional Building
- Frisco Campus
 - Construction of a new facility on an existing campus
 - The campus is planned to include:
 - IT Center of Excellence

3.3 Phase 3

- Frisco Campus
 - Construction of a new facility on an existing campus
 - The campus is planned to include:
 - Welcome Center
- McKinney Campus
 - Construction of a new facility on an existing campus
 - The campus is planned to include:
 - Welcome Center

3.4 Phase 4

- Frisco Campus
 - Renovations / Repurposing of Existing Buildings
 - Traffic Infrastructure & Wayfinding
- McKinney Campus
 - Renovations / Repurposing of Existing Buildings
 - Wayfinding
- Plano Campus
 - Wayfinding

4. Community

4.1 Project Teams

4.1.1 Phase 1

- Wylie Campus
 - Program Manager: AECOM Technical Services, Inc. (under contract)
 - A/E: Page Southerland Page, Inc. (under contract)
 - MEP: Reed, Wells, Benson & Co.
 - Civil Engineer: Pacheco Koch Consulting Engineers, Inc.
 - Cost Consulting: Vermeulens
 - Construction Manager-at-Risk: Skanska USA Building, Inc. (under contract)
 - Commissioning Agent: Bath Group, Inc. (under contract)
- Technical Campus
 - Program Manager: AECOM Technical Services, Inc. (under contract)
 - A/E: Perkins+Will, Inc. (under contract)
 - Associate Architect: Hoefer Wysocki Architecture
 - MEP: Purdy McGuire
 - Civil Engineer: Pacheco Koch Consulting Engineers, Inc.
 - Structural Engineer: L.A. Fuess Partners, Inc.
 - Cost Consulting: Vermeulens
 - Construction Manager-at-Risk: McCarthy Building Companies, Inc. (under contract)
 - Commissioning Agent: Farnsworth (under contract)

4.1.2 Phase 2

- Celina Campus
 - Program Manager: AECOM (under contract)

- A/E: Beck Architecture, LLC (under contract)
 - Structural Engineer: L.A. Fuess Partners, Inc.
 - MEP: Reed, Wells, Benson & Co.
 - Civil Engineer: RLK Engineering
- Construction Manager-at-Risk: JT Vaughn Construction (under contract)
- Farmersville Campus
 - Program Manager: AECOM (under contract)
 - A/E: Beck Architecture, LLC (under contract)
 - Structural Engineer: L.A. Fuess Partners, Inc.
 - MEP: Reed, Wells, Benson & Co.
 - Civil Engineer: RLK Engineering
 - Construction Manager-at-Risk: JT Vaughn Construction (under contract)
- Frisco Campus (IT Center of Excellence)
 - Program Manager: AECOM (under contract)
 - A/E: Beck Architecture, LLC (under contract)
 - MEP: Reed, Wells, Benson & Co.
 - Civil Engineer: RLK Engineering
 - Construction Manager-at-Risk: JE Dunn Construction (under contract)

4.1.3 Phase 3

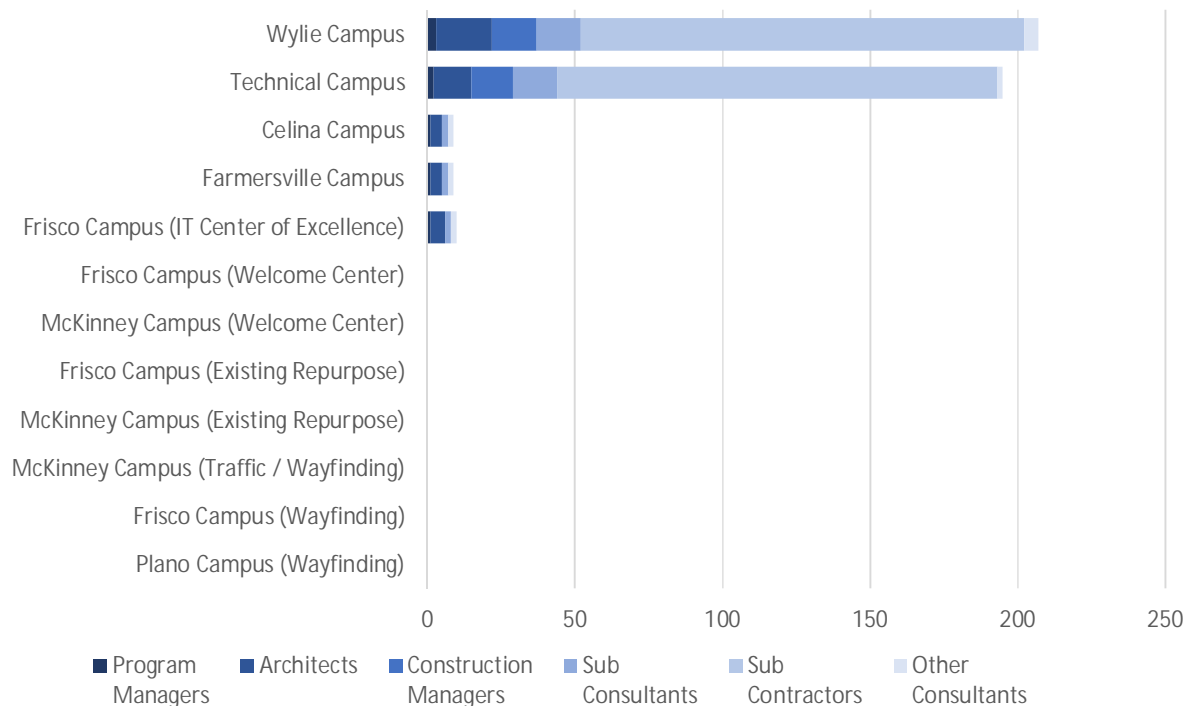
- Frisco Campus (Welcome Center)
 - Program Manager: (AECOM option expiration date: August 2019)
 - A/E: TBD
 - Construction Manager-at-Risk: TBD
- McKinney Campus (Welcome Center)
 - Program Manager: (AECOM option expiration date: August 2019)
 - A/E: TBD
 - Construction Manager-at-Risk: TBD

4.1.4 Phase 4

- Frisco Campus (Existing Repurpose)
 - Program Manager: (AECOM option expiration date: May 2021)
 - A/E: TBD
 - Construction Manager-at-Risk: TBD
- McKinney Campus (Existing Repurpose)
 - Program Manager: (AECOM option expiration date: May 2021)
 - A/E: TBD

- Construction Manager-at-Risk: TBD
- McKinney Campus (Traffic / Wayfinding)
 - Program Manager: (AECOM option expiration date: May 2021)
 - A/E: TBD
 - Construction Manager-at-Risk: TBD
- Frisco Campus (Wayfinding)
 - Program Manager: (AECOM option expiration date: May 2021)
 - A/E: TBD
 - Construction Manager-at-Risk: TBD
- Plano Campus (Wayfinding)
 - Program Manager: (AECOM option expiration date: May 2021)
 - A/E: TBD
 - Construction Manager-at-Risk: TBD

4.2 Current Personnel Estimate



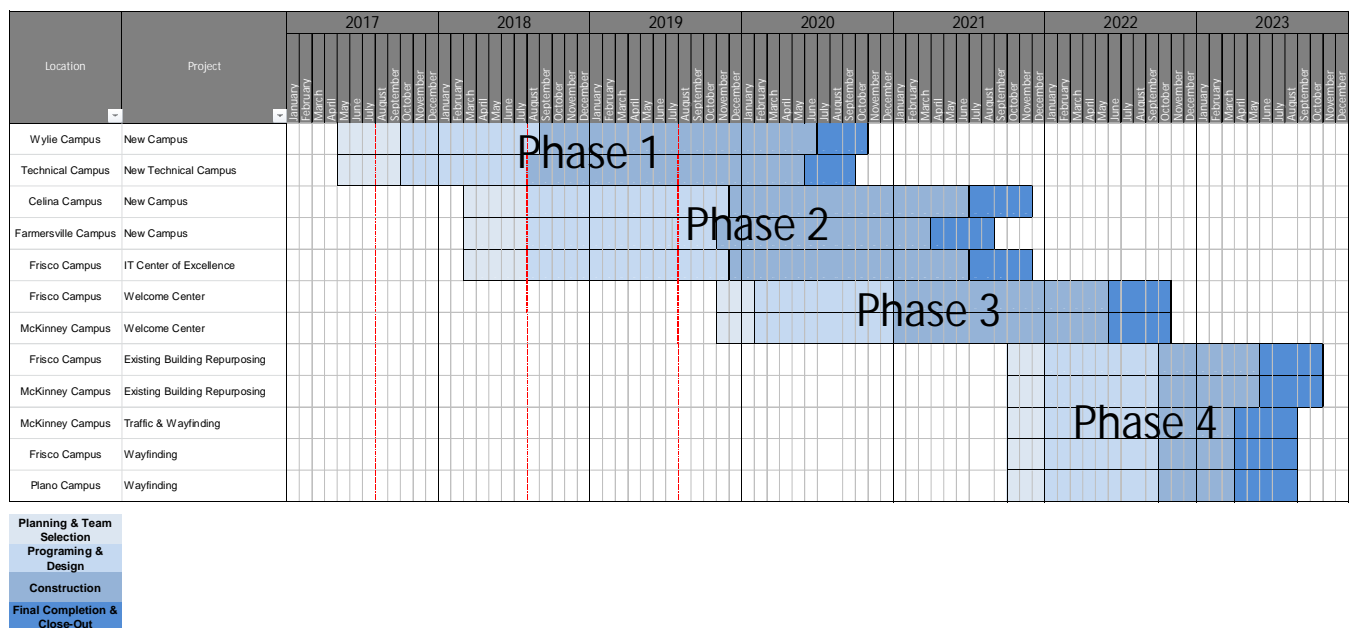
It is estimated that the Program Managers, Architects, Construction Managers, Sub-Consultants, and Sub-Contractors, under contract with Collin College for the 2017 Capital Improvement Program, have 430 employees contributing to the program's progress.

4.3 Community Outreach

- Collin College 2017 Capital Improvement Program Website
 - o <https://CollinCollege2017CIP.com>
 - o Includes the following features:
 - Program Overview
 - Project Scopes
 - Project Schedules
 - Project Budgets
 - Progress Photos/Renderings
 - Live On-Site Camera Feeds

5. Schedule

5.1 Program



5.2 Phase 1

Wylie Campus

Activity	Baseline Finish	Planned Finish		Actual Finish	
BOT Approval of Program Manager	May 16, 2017	May 16, 2017	↑	May 16, 2017	✓
BOT Approval of A/E Procurement Method	May 23, 2017	May 23, 2017	↑	May 23, 2017	✓
BOT Approval of Construction Delivery Method	May 23, 2017	May 23, 2017	↑	May 23, 2017	✓
BOT Approval of Recommended Firms	August 22, 2017	August 22, 2017	↑	August 22, 2017	✓
Architect Mobilized	September 12, 2017	September 29, 2017	↓	September 28, 2017	✓
GMP Construction Documents Submittal	June 26, 2018	June 26, 2018	↑	June 26, 2018	✓
BOT Approval of GMP	August 28, 2018	August 28, 2018	↑	August 28, 2018	✓
Contractor Mobilized	September 10, 2018	September 12, 2018	↔	September 12, 2018	✓
Foundations Complete	May 18, 2019	April 30, 2019	↑	April 23, 2019	✓
Structures Complete	June 28, 2019	June 28, 2019	↑	-	
Dry-In of Buildings Complete	October 26, 2019	October 26, 2019	↑	-	
Permanent Power Complete	September 17, 2019	September 17, 2019	↑	-	
Interior Finish-Out Complete	May 1, 2020	May 1, 2020	↑	-	
Substantial Completion	June 25, 2020	June 25, 2020	↑	-	
Final Completion	August 23, 2020	August 23, 2020	↑	-	
Student Occupancy	August 2020	August 2020	↑	-	

Technical Campus

Activity	Baseline Finish	Planned Finish		Actual Finish	
BOT Approval of Program Manager	May 16, 2017	May 16, 2017	↑	May 16, 2017	✓
BOT Approval of A/E Procurement Method	May 23, 2017	May 23, 2017	↑	May 23, 2017	✓
BOT Approval of Construction Delivery Method	May 23, 2017	May 23, 2017	↑	May 23, 2017	✓
BOT Approval of Recommended Firms	August 22, 2017	August 22, 2017	↑	August 22, 2017	✓
Architect Mobilized	September 12, 2017	September 29, 2017	↓	September 28, 2017	✓
GMP Construction Documents Submittal	April 16, 2018	April 16, 2018	↑	April 19, 2018	✓
BOT Approval of GMP	June 26, 2018	June 26, 2018	↑	June 26, 2018	✓
Contractor Mobilized	July 6, 2018	July 20, 2018	↔	July 26, 2018	✓
Foundations Complete	September 23, 2019	September 23, 2019	↑	-	
Structures Complete	November 18, 2019	November 18, 2019	↑	-	
Dry-In of Buildings Complete	December 20, 2019	December 20, 2019	↑	-	
Permanent Power Complete	TBD	TBD		-	
Interior Finish-Out Complete	May 8, 2020	May 8, 2020	↑	-	
Substantial Completion	June 11, 2020	June 11, 2020	↑	-	
Final Completion	July 7, 2020	July 7, 2020	↑	-	
Student Occupancy	August 2020	August 2020	↑	-	

5.3 Phase 2

Celina Campus

Activity	Baseline Finish	Planned Finish		Actual Finish	
BOT Approval of Program Manager	September 25, 2018	February 14, 2018	↑	February 14, 2018	✓
BOT Approval of A/E Procurement Method	September 25, 2018	March 27, 2018	↑	March 27, 2018	✓
BOT Approval of Construction Delivery Method	September 25, 2018	March 27, 2018	↑	March 27, 2018	✓
BOT Approval of Recommended A/E Firm	June 26, 2018	June 26, 2018	↑	June 26, 2018	✓
BOT Approval of Recommended CM Firm	August 2018	August 2018	↑	August 28, 2018	✓
Architect Mobilized	July 24, 2018	July 24, 2018	↑	July 31, 2018	✓
Schematic Design Submittal	January 8, 2019	January 15, 2019	→	January 16, 2019	✓
Design Development Submittal	April 30, 2019	April 30, 2019	↑	April 26, 2019	✓
Construction Document Submittal	September 20, 2019	September 20, 2019	↑	-	
Contractor Mobilized	December 2019	December 2019	↑	-	
Student Occupancy	August 2021	August 2021	↑	-	

Farmersville Campus

Activity	Baseline Finish	Planned Finish		Actual Finish	
BOT Approval of Program Manager	September 25, 2018	February 14, 2018	↑	February 14, 2018	✓
BOT Approval of A/E Procurement Method	September 25, 2018	March 27, 2018	↑	March 27, 2018	✓
BOT Approval of Construction Delivery Method	September 25, 2018	March 27, 2018	↑	March 27, 2018	✓
BOT Approval of Recommended A/E Firm	June 26, 2018	June 26, 2018	↑	June 26, 2018	✓
BOT Approval of Recommended CM Firm	August 2018	August 2018	↑	August 28, 2018	✓
Architect Mobilized	July 24, 2018	July 24, 2018	↑	July 31, 2018	✓
Schematic Design Submittal	December 20, 2018	December 18, 2018	↑	December 18, 2018	✓
Design Development Submittal	April 2, 2019	April 19, 2019	↓	April 26, 2019	✓
Construction Document Submittal	July 25, 2019	July 25, 2019	↑	-	
Contractor Mobilized	November 2019	November 2019	↑	-	
Student Occupancy	August 2021	August 2021	↑	-	

Frisco Campus (IT Center of Excellence)

Activity	Baseline Finish	Planned Finish		Actual Finish	
BOT Approval of Program Manager	September 25, 2018	February 14, 2018	↑	February 14, 2018	✓
BOT Approval of A/E Procurement Method	September 25, 2018	March 27, 2018	↑	March 27, 2018	✓
BOT Approval of Construction Delivery Method	September 25, 2018	March 27, 2018	↑	March 27, 2018	✓
BOT Approval of Recommended A/E Firm	June 26, 2018	June 26, 2018	↑	June 26, 2018	✓
BOT Approval of Recommended CM Firm	August 2018	August 2018	↑	August 28, 2018	✓
Architect Mobilized	July 24, 2018	July 24, 2018	↑	July 31, 2018	✓
Schematic Design Submittal	May 24, 2019	May 24, 2019	↑	-	
Design Development Submittal	August 23, 2019	August 23, 2019	↑	-	
Construction Document Submittal	December 9, 2019	December 9, 2019	↑	-	
Contractor Mobilized	December 2019	December 2019	↑	-	
Student Occupancy	August 2021	August 2021	↑	-	

5.4 Phase 3

Frisco Campus (Welcome Center)

Activity	Baseline Finish	Planned Finish		Actual Finish
BOT Approval of Program Manager	November 2019	November 2019	↑	-
BOT Approval of A/E Procurement Method	November 2019	November 2019	↑	-
BOT Approval of Construction Delivery Method	November 2019	November 2019	↑	-
Student Occupancy	August 2022	August 2022	↑	-

McKinney Campus (Welcome Center)

Activity	Baseline Finish	Planned Finish		Actual Finish
BOT Approval of Program Manager	November 2019	November 2019	↑	-
BOT Approval of A/E Procurement Method	November 2019	November 2019	↑	-
BOT Approval of Construction Delivery Method	November 2019	November 2019	↑	-
Student Occupancy	August 2022	August 2022	↑	-

5.5 Phase 4

Frisco Campus (Existing Repurpose)

Activity	Baseline Finish	Planned Finish		Actual Finish
BOT Approval of Program Manager	October 2021	October 2021	↑	-
BOT Approval of A/E Procurement Method	October 2021	October 2021	↑	-
BOT Approval of Construction Delivery Method	October 2021	October 2021	↑	-
Student Occupancy	August 2023	August 2023	↑	-

McKinney Campus (Existing Repurpose)

Activity	Baseline Finish	Planned Finish		Actual Finish
BOT Approval of Program Manager	October 2021	October 2021	↑	-
BOT Approval of A/E Procurement Method	October 2021	October 2021	↑	-
BOT Approval of Construction Delivery Method	October 2021	October 2021	↑	-
Student Occupancy	August 2023	August 2023	↑	-

McKinney Campus (Traffic / Wayfinding)

Activity	Baseline Finish	Planned Finish		Actual Finish
BOT Approval of Program Manager	October 2021	October 2021	↑	-
BOT Approval of A/E Procurement Method	October 2021	October 2021	↑	-
BOT Approval of Construction Delivery Method	October 2021	October 2021	↑	-
Student and Staff Use	August 2023	August 2023	↑	-

Frisco Campus (Wayfinding)

Activity	Baseline Finish	Planned Finish		Actual Finish
BOT Approval of Program Manager	October 2021	October 2021	↑	-
BOT Approval of A/E Procurement Method	October 2021	October 2021	↑	-
BOT Approval of Construction Delivery Method	October 2021	October 2021	↑	-
Student and Staff Use	August 2023	August 2023	↑	-

Plano Campus (Wayfinding)

Activity	Baseline Finish	Planned Finish		Actual Finish
BOT Approval of Program Manager	October 2021	October 2021	↑	-
BOT Approval of A/E Procurement Method	October 2021	October 2021	↑	-
BOT Approval of Construction Delivery Method	October 2021	October 2021	↑	-
Student and Staff Use	August 2023	August 2023	↑	-

6. Budget

6.1 Program Summary

Program Wide Budget

Budget Group	Original Budget	Current Budget	Commitments	Expenditures	% of Budget Committed	% of Commitment Expended
Management, Design, & Pre-Construction	\$54,010,598	\$51,756,611	\$37,651,102	\$22,852,348	73%	61%
Investigation, Testing & Verification	\$9,330,450	\$8,015,908	\$3,268,729	\$1,136,235	41%	35%
Construction, Equipment & Furnishings	\$514,928,252	\$526,955,302	\$312,861,253	\$127,119,211	59%	41%
Misc.	\$439,079	\$508,402	\$92,848	\$92,848	18%	100%
Contingency	\$21,291,621	\$12,763,778	\$0	\$0	0%	0%
Total Program Budget	\$600,000,000	\$600,000,000	\$353,873,933	\$151,200,641		
% of Total Program Budget Committed	58.98%					
% of Total Commitments Expended	42.73%					
% of Total Program Budget Expended	25.20%					

6.2 Phase 1

Wylie Campus

Budget Group	Original Budget	Current Budget	Commitments	Expenditures	% of Budget Committed	% of Commitment Expended
Management, Design, & Pre-Construction	\$15,051,440	\$13,495,577	\$13,475,044	\$9,835,301	100%	73%
Investigation, Testing & Verification	\$2,679,247	\$2,200,255	\$1,589,240	\$673,601	72%	42%
Construction, Equipment & Furnishings	\$133,174,284	\$149,710,004	\$140,850,306	\$52,281,571	94%	37%
Misc.	\$126,082	\$171,623	\$54,951	\$54,951	32%	100%
Contingency	\$6,571,649	\$507,331	\$0	\$0	0%	0%
Total Project Budget	\$157,602,702	\$166,084,789	\$155,969,540	\$62,845,424		
% of Total Project Budget Committed	93.91%					
% of Total Commitments Expended	40.29%					
% of Total Project Budget Expended	37.84%					

Technical Campus

Budget Group	Original Budget	Current Budget	Commitments	Expenditures	% of Budget Committed	% of Commitment Expended
Management, Design, & Pre-Construction	\$14,713,206	\$13,710,625	\$13,628,669	\$9,673,752	99%	71%
Investigation, Testing & Verification	\$2,619,039	\$1,914,947	\$1,539,750	\$380,538	80%	25%
* Construction, Equipment & Furnishings	\$130,181,602	\$159,976,076	\$153,340,225	\$43,766,917	96%	29%
Misc.	\$123,249	\$142,545	\$23,317	\$23,317	16%	100%
Contingency	\$6,423,972	\$1,378,614	\$0	\$0	0%	0%
Allen ISD Reimbursement	-	(\$12,000,000)	(\$12,000,000)	-		
Allen EDC Grant	-	(\$400,000)	(\$400,000)	-		
Total Project Budget	\$154,061,068	\$164,722,807	\$156,131,962	\$53,844,524		
% of Total Project Budget Committed	94.78%					
% of Total Commitments Expended	34.49%					
% of Total Project Budget Expended	32.69%					

* Actual Budget from bond funds is \$147,576,076 (\$159,976,076 less \$12,000,000 Allen ISD Reimbursement and \$400,000 Allen EDC Grant)

6.3 Phase 2

Celina Campus

Budget Group	Original Budget	Current Budget	Commitments	Expenditures	% of Budget Committed	% of Commitment Expended
Management, Design, & Pre-Construction	\$5,078,807	\$3,934,714	\$3,896,135	\$1,440,043	99%	37%
Investigation, Testing & Verification	\$936,908	\$936,908	\$63,990	\$31,059	7%	49%
Construction, Equipment & Furnishings	\$46,569,862	\$46,569,862	\$2,700	\$2,700	0%	100%
Misc.	\$44,090	\$51,225	\$8,256	\$8,256	16%	100%
Contingency	\$2,482,596	\$3,619,555	\$0	\$0	0%	0%
Total Project Budget	\$55,112,263	\$55,112,263	\$3,971,081	\$1,482,058		
% of Total Project Budget Committed	7.21%					
% of Total Commitments Expended	37.32%					
% of Total Project Budget Expended	2.69%					

Farmersville Campus

Budget Group	Original Budget	Current Budget	Commitments	Expenditures	% of Budget Committed	% of Commitment Expended
Management, Design, & Pre-Construction	\$2,539,404	\$2,171,819	\$2,152,530	\$837,001	99%	39%
Investigation, Testing & Verification	\$468,453	\$468,453	\$48,990	\$36,243	10%	74%
Construction, Equipment & Furnishings	\$23,284,932	\$23,507,954	\$0	\$0	0%	0%
Misc.	\$22,045	\$23,560	\$2,755	\$2,755	12%	100%
Contingency	\$1,241,298	\$1,384,347	\$0	\$0	0%	0%
Total Project Budget	\$27,556,132	\$27,556,132	\$2,204,275	\$875,998		
% of Total Project Budget Committed	8.00%					
% of Total Commitments Expended	39.74%					
% of Total Project Budget Expended	3.18%					

Frisco Campus (IT Center of Excellence)

Budget Group	Original Budget	Current Budget	Commitments	Expenditures	% of Budget Committed	% of Commitment Expended
Management, Design, & Pre-Construction	\$5,472,853	\$4,167,459	\$4,128,724	\$751,751	99%	18%
Investigation, Testing & Verification	\$1,009,600	\$1,009,600	\$26,760	\$14,795	3%	55%
Construction, Equipment & Furnishings	\$50,183,042	\$50,183,042	\$0	\$0	0%	0%
Misc.	\$47,510	\$51,079	\$3,569	\$3,569	7%	100%
Contingency	\$2,675,210	\$3,977,036	\$0	\$0	0%	0%
Total Project Budget	\$59,388,215	\$59,388,215	\$4,159,053	\$770,115		
% of Total Project Budget Committed	7.00%					
% of Total Commitments Expended	18.52%					
% of Total Project Budget Expended	1.30%					

6.4 Phase 3

Frisco Campus (Welcome Center)

Budget Group	Original Budget	Current Budget	Commitments	Expenditures	% of Budget Committed	% of Commitment Expended
Total Project Budget	\$26,329,788	\$26,099,401	\$0	\$0		
% of Total Project Budget Committed	0.00%					
% of Total Commitments Expended	0.00%					
% of Total Project Budget Expended	0.00%					

McKinney Campus (Welcome Center)

Budget Group	Original Budget	Current Budget	Commitments	Expenditures	% of Budget Committed	% of Commitment Expended
Total Project Budget	\$36,861,704	\$36,169,164	\$0	\$0		
% of Total Project Budget Committed	0.00%					
% of Total Commitments Expended	0.00%					
% of Total Project Budget Expended	0.00%					

6.5 Phase 4

Frisco Campus (Existing Repurpose)

Budget Group	Original Budget	Current Budget	Commitments	Expenditures	% of Budget Committed	% of Commitment Expended
Total Project Budget	\$7,321,091	\$7,321,091	\$0	\$0		
% of Total Project Budget Committed	0.00%					
% of Total Commitments Expended	0.00%					
% of Total Project Budget Expended	0.00%					

McKinney Campus (Existing Repurpose)

Budget Group	Original Budget	Current Budget	Commitments	Expenditures	% of Budget Committed	% of Commitment Expended
Total Project Budget	\$9,151,364	\$9,151,364	\$0	\$0		
% of Total Project Budget Committed	0.00%					
% of Total Commitments Expended	0.00%					
% of Total Project Budget Expended	0.00%					

McKinney Campus (Traffic / Wayfinding)

Budget Group	Original Budget	Current Budget	Commitments	Expenditures	% of Budget Committed	% of Commitment Expended
Total Project Budget	\$7,826,795	\$7,558,911	\$370,000	\$314,500		
% of Total Project Budget Committed	4.89%					
% of Total Commitments Expended	85.00%					
% of Total Project Budget Expended	4.16%					

Frisco Campus (Wayfinding)

Budget Group	Original Budget	Current Budget	Commitments	Expenditures	% of Budget Committed	% of Commitment Expended
Total Project Budget	\$2,546,293	\$2,338,770	\$0	\$0		
% of Total Project Budget Committed	0.00%					
% of Total Commitments Expended	0.00%					
% of Total Project Budget Expended	0.00%					

Plano Campus (Wayfinding)

Budget Group	Original Budget	Current Budget	Commitments	Expenditures	% of Budget Committed	% of Commitment Expended
Total Project Budget	\$5,092,585	\$4,677,541	\$0	\$0		
% of Total Project Budget Committed	0.00%					
% of Total Commitments Expended	0.00%					
% of Total Project Budget Expended	0.00%					

6.6 Phase A

Public Safety Training Center

Budget Group	Current Budget	Commitments	Expenditures	% of Budget Committed	% of Commitment Expended
Construction Costs	\$31,068,022	\$31,068,022	\$31,068,022	100%	100%
Total Project Budget	\$31,068,022	\$31,068,022	\$31,068,022		

6.7 Building Fund Reimbursement

Program Level

Budget Group	Original Budget	Current Budget	Commitments	Expenditures	% of Budget Committed	% of Commitment Expended
Building Fund Reimbursement	\$51,150,000	\$0	\$0	\$0	0%	0%
Program Contingency	\$0	\$2,751,530	\$0	\$0	0%	0%
Total Project Budget	\$51,150,000	\$2,751,530	\$0	\$0		

* Building Fund Reimbursements for Wylie Campus land, Technical Campus land, and Public Safety Training Center construction costs were completed in August '18. Budgets, Commitments and Expenditures for these costs are reflected in each project.

7. Completed Items

7.1 General Program

- AECOM issued the Monthly Program Report for March '19 to Collin College on April 5th
- AECOM conducted coordination meetings with the Executive Committee on April 1st, 8th, and 15th
- Beck Architecture, LLC presented the Conceptual Design of the Farmersville Campus at the Board of Trustees meeting held on April 23rd
- AECOM conducted a meeting with the Frisco Campus provost to review Phase 3 Projects on April 23rd
- AECOM conducted a meeting with the McKinney Campus provost to review Phase 3 Projects on April 26th

7.2 Procurement

- Collin College and AECOM conducted a Program Procurement Update Meeting on April 3rd and 17th
- Conley Group, Inc. was issued a PO for the Building Envelope Design Review Services at Farmersville Campus on April 1st
- Conley Group, Inc. was issued a PO for the Building Envelope Design Review Services at Celina Campus on April 5th

7.3 Design

- AECOM held a Science Exhaust and Schedule discussion with Collin College, Beck Architecture, LLC, and RWB Consulting Engineers for the Celina Campus and Farmersville Campus on April 1st
- Beck Architecture, LLC conducted the 3rd Design Development review session with Collin College, AECOM and JT Vaughn Construction for the Celina Campus on April 2nd
- Beck Architecture, LLC conducted the 4th Design Development review session with Collin College, AECOM and JT Vaughn Construction for the Farmersville Campus on April 9th
- Beck Architecture, LLC conducted the Conceptual Presentation with Collin College, AECOM and JE Dunn Construction Company for the IT Center of Excellence on April 11th
- Beck Architecture, LLC conducted the 4th Design Development review session with Collin College, AECOM and JT Vaughn Construction for the Celina Campus on April 16th
- Beck Architecture, LLC conducted the 1st Schematic Design review session with Collin College, AECOM and JE Dunn Construction Company for the IT Center of Excellence on April 23rd

7.4 Pre-Construction

- Beck Architecture, LLC submitted 100% Design Development drawings for the Celina Campus and Farmersville Campus to JT Vaughn Construction for pricing on April 26th
- JE Dunn Construction Company continues Pre-Construction coordination activities with Beck Architecture, LLC, AECOM and Collin College for the IT Center of Excellence

7.5 Construction

- Collin College, AECOM, Perkins+Will, Inc. and McCarthy Building Companies, Inc. conducted Weekly OAC meetings on April 3rd, 10th, 17th, and 24th for the Technical Campus
- Collin College, AECOM, Page Southerland Page, Inc. and Skanska USA Building, Inc. conducted Weekly OAC meetings on April 4th, 11th, 18th, and 25th for the Wylie Campus
- Skanska USA Building, Inc. held a Landscape VE meeting with Collin College, AECOM, and Page Southerland Page, Inc. on April 1st
- AECOM held a Signage Review meeting with Collin College and Page Southerland Page, Inc. on April 1st for the Wylie Campus
- Collin College, AECOM, and Black Hawk Integrations met to discuss access control at the Technical Campus on April 4th
- Collin College, AECOM, Perkins+Will, Inc., Purdy-McGuire, and McCarthy Building Companies, Inc. visited the welding lab at Texas State Technical College for the Technical Campus on April 5th
- Collin College, AECOM, Perkins+Will, Inc., McCarthy Building Companies, Inc., Purdy-McGuire, visited the welding lab at San Jacinto College for the Technical Campus on April 11th
- AECOM and McCarthy Building Companies, Inc. met to discuss the requirements for the firestopping at the Technical Campus on April 18th
- Collin College, AECOM, Perkins+Will, Inc., McCarthy Building Companies, Inc., Purdy-McGuire, Hoefer Wysocki met with Genesis Planning for an equipment update at the Technical Campus on April 29th

See Appendix A for Construction Progress Photos

7.6 Acceptance and Close-Out

- No Acceptance and Close-Out Phase Items have been completed at this time

8. Pending Items

8.1 General Program

- No General Program items are pending at this time

8.2 Procurement

- Celina Campus, Farmersville Campus and IT Center of Excellence design phase commissioning services
- IT Center of Excellence design phase building envelope services

8.3 Design

- Schematic Design is on-going for the IT Center of Excellence

- [Cost sharing agreement with Hillwood Development for co-shared infrastructure at Celina Campus](#)

8.4 Pre-Construction

- [Coordination with the City of Celina and City of Farmersville for the permitting/zoning requirements for the Celina Campus and Farmersville Campus](#)

8.5 Construction

- [Building foundation, structural slab and joists for the garage and Academic Building, and garage foundation installations at the Technical Campus are on-going](#)
- [Site work, underground utility, steel erection, and building slab installations at the Wylie Campus are on-going](#)

[See Appendix A for Construction Progress Photos](#)

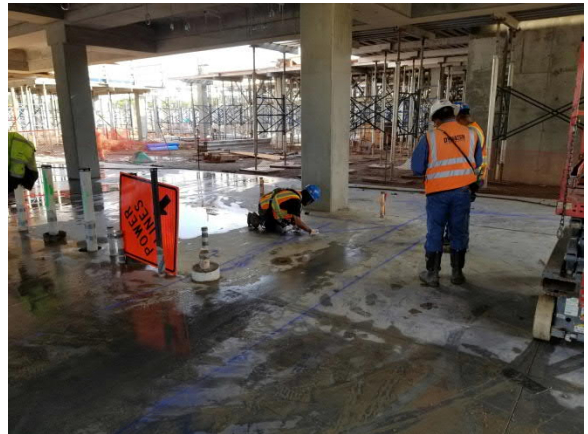
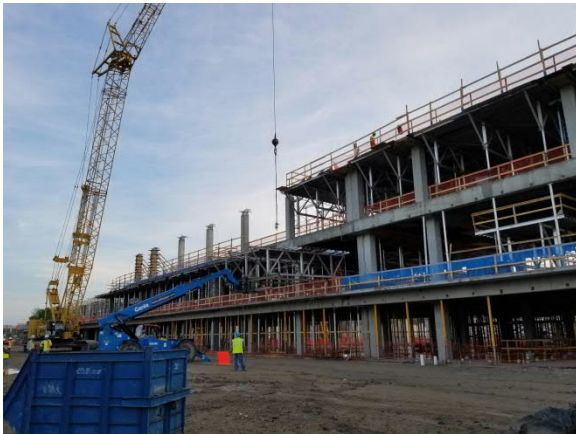
8.6 Acceptance and Close-Out

- No Acceptance and Close-Out activities are underway at this time

Appendix A – Construction Progress Photos

Technical Campus





Wylie Campus

