

October 5, 2022

Mr. Phillip Francis
Assistant Superintendent of District Services
Livonia Public Schools
15125 Farmington Road
Livonia, MI 48154

RE: Contract Amendment Recommendation for Roofing Design & Construction Administration Services
Sinking Fund - Roofing Replacement Projects
2023 Projects - Kennedy Elementary School, Webster Elementary School (Design Phase only),
and Coolidge Elementary School (Design Phase only)

Dear Mr. Francis:

This letter transmits an update from Plante Moran Cresa (PMC) as it relates to the assignment to assist and advise Livonia Public Schools (LPS) in its selection of a Roofing Designer & Construction Administration Services Firm for the Projects listed above. This update represents the mutual efforts of PMC and LPS administration and staff (Sinking Fund Team) to present a framework in order to identify, evaluate and recommend a Firm for these Projects.

In 2017, LPS awarded a contract to Roofing Technology Associates, LTD (RTA) to conduct a district-wide roofing assessment of the existing roofs. The completed report indicated that numerous buildings needed near-term repair and/or replacement. Based upon the results and utilizing RTA's weighted Roofing Condition Index (RCI) of the various facilities, the Sinking Fund Team created an initial priority list of facilities requiring roofing work that continues to be monitored and updated by the Sinking Fund Team.

In 2018, the board approved the contract award to RTA for roofing design and construction administration services with subsequent contract amendments for roof replacement projects as follows:

- 2018: Holmes Middle School, Transportation, Warehouse (partial), Franklin High School (partial)
- 2019: Johnson Upper Elementary School

- 2020: Career Technical Center, Emerson Middle School, Rosedale Elementary School
- 2021: Riley Upper Elementary School, Randolph Elementary School, Hayes Elementary School, Frost Middle School
- 2022: Stevenson High School (Partial), Franklin High School (Partial), Garfield Elementary School and Grant Elementary School

The Sinking Fund Team has identified Kennedy Elementary School, Webster Elementary School (Design Phase only), and Coolidge Elementary School (Design Phase only) as the next facilities to have roof replacement work completed. In general, the scope involves complete removal of the existing roofing system in the identified areas and installation of a new roofing system including any required sheet metal.

The Sinking Fund Team has been satisfied with the work completed by RTA to date and requested a formal proposal from them to incorporate this additional scope of work. In response to this request, RTA provided the attached proposals dated September 28, 2022, to extend their services. Their proposed fee remains competitive and consistent with the percentage used to award their original contract.

The Sinking Fund Team has reviewed their proposals and budgets and recommends the Board of Education retain RTA for the above referenced Work in the lump sum amount of **\$117,900.00**. The cost for this Work will be detailed in a Purchase Order(s) issued by the District and in a contract amendment to their current contract, pending final review and approval of terms by district legal counsel.

The Sinking Fund Team is available at the Board's convenience to answer any questions regarding this process and/or the recommendation. Please direct all questions through me via email at brian.weber@plantemorancres.com.

Sincerely,



Brian Weber
Plante Moran Cresa

ENCLOSURES: Roofing Technology Associates, LTD Proposals dated September 28, 2022
Roof Condition Map of Kennedy Elementary School (2017)
Roof Condition Map of Webster Elementary School (2017)
Roof Condition Map of Coolidge Elementary School (2017)



ROOFING TECHNOLOGY ASSOCIATES, LTD.

38031 SCHOOLCRAFT
LIVONIA, MICHIGAN 48150-1065
(734) 591-4444 • FAX (734) 591-1660 • E-MAIL: rta@rtald.com
Web site www.rtald.com

September 28, 2022

Mr. Brian Weber
Plance Moran CRESA
26300 Northwestern Highway, Suite 120
Southfield MI 48076
Brian.weber@plantemoran.com

RE: ROOF REMEDIATION SPECIFICATIONS, BIDDING ASSISTANCE AND QUALITY CONTROL MONITORING SERVICES
Livonia Public Schools
• Kennedy Elementary School
Livonia, Michigan

Dear Mr. Weber:

In accordance with your request, we are pleased to submit this proposal to provide **additional** roof consulting services for the above-referenced school. We have prepared this proposal based upon our conversations with you, our past involvement with these facilities and our past experience on similar projects. The purpose of this correspondence is to outline our proposed scope of services and provide you with a fee for our services. We trust that you will find this proposal acceptable and will retain our firm to perform the required roof consulting services.

As requested, we will provide roof consulting services in accordance with the scope of work outlined herein for the above referenced school. The building has approximately 49,480 square feet of roofing.

The subject building is a school facility which is one story in height. The existing roofs are generally low-sloped and are covered with a PVC roofing system.

PHASE I – PLANS AND TECHNICAL SPECIFICATIONS / BID ASSISTANCE

Remedial roofing specifications will be prepared based upon pertinent information gathered during site visits to determine specific existing conditions. The technical documents will include plans, specifications and details necessary to clearly define the scope of the remedial roof work. The items of work will include:

- Review of any available construction plans and details and compiling any other available information regarding the details or existing construction.

Professional Roof Consulting Services



- Visit the project sites to examine and evaluate the roof areas designated for remedial roof work. Perform test cuts on the existing roof systems at walls and curbs to determine the existing details of construction. Repair test cut samples immediately after our visual examination.
- Development of the most feasible and economical solutions to the current conditions based upon the project parameters.
- Preparation of technical specifications, including roof plans and details for the required remedial work. The technical specifications will establish the types and quality of the materials to be used and the manner in which the materials are to be applied. Included is the design of new fascia panels.
- Incorporation of the technical specifications with other standard requirements and bidding documents to provide a complete bid package. Such additional information will include insurance requirements, general conditions of construction and bid proposal forms. It is understood that RTA will prepare and provide such additional information and will assemble the complete bid packages. Assist with the advertising of the project as necessary.
- Assistance will be provided in the invitation of qualified roofing contractors to bid the required work as may be required.
- Attendance at a pre-bid meeting at the project sites with the contractors bidding the project to answer questions they may have regarding the project specifications. Issue Addendums as may be required.
- Respond to requests for information from the bidding roofing contractors during the bidding period.
- Evaluation of the submitted bids will be provided to assist in the selection of the roofing contractor(s) to perform the work. A recommendation relative to our evaluation of the bids will be submitted.

PHASE II – ROOFING QUALITY CONTROL MONITORING SERVICES

Construction quality control monitoring services are provided to ensure that the requirements of the contract documents are being met. The ongoing determination of contract compliance is based upon daily construction monitoring, which includes verification that the specified materials are used, proper quantities of materials are provided, and that the order and method of installation of such materials is in accordance with acceptable standard industry installation procedures. The goal of construction monitoring is to ensure that a quality roofing system is attained.



During the roof renovation work, we propose to provide an experienced roofing field representative to provide quality control monitoring and any required testing services in order to develop opinions as to whether the work essentially complies with project requirements and sound roofing practices.

In general, a variety of construction quality control monitoring services will be provided on your project. Specifically, our services will include the following items of work:

- Attendance at a pre-construction conference by our representatives. Specific items relating to materials storage, application procedures, work schedule and quality control requirements will be reviewed. The roof areas will be reviewed with parties involved in the project to clarify project performance requirements.
- Part-time on-site observation of in-progress roofing operations will be provided as needed. Contact will be made with your representative to review job progress.
- Preparation of Field Reports which will provide a summary of each day's activities, areas worked, test locations and results, notes regarding materials and processes that are found to not be in compliance with the contract documents and project requirements, and any other pertinent information.
- Preparation of punch lists and follow-up on any incomplete or incorrectly installed materials after substantial completion of the reroofing work on each area. A final inspection report will be issued when all roofing and related sheet metal work is complete.
- Review Roofing Contractor's submittals and shop drawings.

GENERAL

One of our Registered Roof Consultants (RRCs) will serve as Project Manager on this project. Other staff members will be assigned to the project once the project schedule is formalized.

We will commence our services after receiving your written authorization to proceed. The technical specifications will be available for bidding by the selected roofing contractors by October 28, 2022 for Kennedy, providing weather conditions allow for the timely completion of our field work.

PROFESSIONAL FEES

Professional fees for the work and personnel required to complete the above outlined roof consulting services will be established and billed on a lump sum basis.



The fees for the services of the project roof areas as outlined herein will be:

PHASE I AND PHASE II:	
Kennedy Elementary School	\$41,500

The fixed fee is approximately 2.8% of the preliminary budget of \$1,484,400 for roofing. If the actual bid costs are 10% over or under the preliminary budget, the fee will be reevaluated accordingly.

Any necessary additional charges for services and personnel required to complete the project, such as specially requested meetings or other assistance, will be in accordance with our Fee and Rate Schedule (attached). If it appears that additional work is necessary for this project, we will contact you or your office with reference to any needed modifications. No additional work will be performed unless authorized by you.

We appreciate this opportunity to submit our proposal for your consideration and look forward to working with you on this project. Following your review of this proposal, please do not hesitate to call us should you have any questions regarding this submittal.

Please indicate your acceptance of this proposal by having the appropriate person submit to us written authorization to perform the above outlined roof consulting services. Thank you for the opportunity to submit this proposal.

Sincerely,

ROOFING TECHNOLOGY ASSOCIATES, LTD.

Michael C. Bode, RRC
President

MCB/lab



ROOFING TECHNOLOGY ASSOCIATES, LTD.

38031 SCHOOLCRAFT
LIVONIA, MICHIGAN 48150-1065
(734) 591-4444 • FAX (734) 591-1660 • E-MAIL: rta@rtald.com
Web site www.rtald.com

FEE AND RATE SCHEDULE PROFESSIONAL SERVICES

PERSONNEL

Fees for our services will be based upon the time worked on the project by professional, technical and clerical personnel according to the following schedule:

	PER HOUR
Senior Project Manager	\$156.00
Project Manager	\$146.00
Senior Roof Consultant	\$133.00
Project Roof Consultant	\$114.00
Staff Roof Consultant*	\$104.00
Senior Roof Technician*	\$98.00
Roof Technician*	\$86.00
CADD Operator*	\$86.00
Secretarial Services*	\$57.00

*For these personnel, overtime work will be charged at a rate equal to 1.3 times the Standard Rate. A premium of 50 percent will be added to hourly rates for depositions and expert witness testimony.

EXPENSES

The following expenses, when incurred in connection with the project, will be charged at the rates shown:

Transportation, Lodging and Subsistence for Out of Town Travel	Cost+15%
Printing, Reproduction, Photographs, Long distance Telephone and Facsimile Charges, Shipping Charges, and Material Purchases	Cost+15%
Vehicle Travel for Project	\$0.85/Mile
Rental of Specialized Field, Laboratory or Monitoring Equipment	Cost+15%

SUBCONTRACTORS/SUBCONSULTANTS

On projects requiring subcontractors or subconsultants, we will obtain the services of reputable contractors or consultants to perform such work. The fees of these contractors or consultants will be added to our invoices plus a 15% service charge.

INVOICES

Progress invoices will be submitted to the client monthly and a final bill will be submitted upon completion of our services. Invoices will show charges for different personnel and expenses. Each invoice is due on presentation and is past due thirty (30) days from invoice date. Client agrees to pay a finance charge of one and one-half percent (1½%) per month on past due accounts. We reserve the right to suspend or terminate work under our agreement upon failure of the client to pay invoices when due.



ROOFING TECHNOLOGY ASSOCIATES, LTD.

38031 SCHOOLCRAFT
LIVONIA, MICHIGAN 48150-1065
(734) 591-4444 • FAX (734) 591-1660 • E-MAIL: rta@rtaltd.com
Web site www.rtaltd.com

September 28, 2022

Mr. Brian Weber
Plance Moran CRESA
26300 Northwestern Highway, Suite 120
Southfield MI 48076
Brian.weber@plantemoran.com

RE: ROOF REMEDIATION SPECIFICATIONS
Livonia Public Schools

- Webster Elementary School
- Coolidge Elementary School

Livonia, Michigan

Dear Mr. Weber:

In accordance with your request, we are pleased to submit this proposal to provide **additional** roof consulting services for the above-referenced schools. We have prepared this proposal based upon our conversations with you, our past involvement with these facilities and our past experience on similar projects. The purpose of this correspondence is to outline our proposed scope of services and provide you with a fee for our services. We trust that you will find this proposal acceptable and will retain our firm to perform the required roof consulting services.

As requested, we will provide roof consulting services in accordance with the scope of work outlined herein for the above referenced two schools. The buildings have approximately 132,000 square feet of roofing.

The subject buildings are school facilities which are one story in height. The existing roofs are generally low-sloped and are covered with a PVC roofing system.

PHASE I – PLANS AND TECHNICAL SPECIFICATIONS

Remedial roofing specifications will be prepared based upon pertinent information gathered during site visits to determine specific existing conditions. The technical documents will include plans, specifications and details necessary to clearly define the scope of the remedial roof work. The items of work will include:



- Review of any available construction plans and details and compiling any other available information regarding the details or existing construction.
- Visit the project sites to examine and evaluate the roof areas designated for remedial roof work. Perform test cuts on the existing roof systems at walls and curbs to determine the existing details of construction. Repair test cut samples immediately after our visual examination.
- Development of the most feasible and economical solutions to the current conditions based upon the project parameters.
- Preparation of technical specifications, including roof plans and details for the required remedial work. The technical specifications will establish the types and quality of the materials to be used and the manner in which the materials are to be applied. Included is the design of new fascia panels.
- Incorporation of the technical specifications with other standard requirements and bidding documents to provide a complete bid package. Such additional information will include insurance requirements, general conditions of construction and bid proposal forms. It is understood that RTA will prepare and provide such additional information and will assemble the complete bid packages. Assist with the advertising of the project as necessary.

GENERAL

A bidding assistance and quality control monitoring proposal will be provided at a later date.

One of our Registered Roof Consultants (RRCs) will serve as Project Manager on this project. Other staff members will be assigned to the project once the project schedule is formalized.

PROFESSIONAL FEES

Professional fees for the work and personnel required to complete the above outlined roof consulting services will be established and billed on a lump sum basis.

The fees for the services of the project roof areas as outlined herein will be:

PHASE I

Webster Elementary School	\$37,300
Coolidge Elementary School	<u>\$39,100</u>
TOTAL	\$76,400



The fixed fee is approximately 1.9% of the preliminary budget of \$3,965,400 for roofing. If the actual bid costs are 10% over or under the preliminary budget, the fee will be reevaluated accordingly.

Any necessary additional charges for services and personnel required to complete the project, such as specially requested meetings or other assistance, will be in accordance with our Fee and Rate Schedule (attached). If it appears that additional work is necessary for this project, we will contact you or your office with reference to any needed modifications. No additional work will be performed unless authorized by you.

We appreciate this opportunity to submit our proposal for your consideration and look forward to working with you on this project. Following your review of this proposal, please do not hesitate to call us should you have any questions regarding this submittal.

Please indicate your acceptance of this proposal by having the appropriate person submit to us written authorization to perform the above outlined roof consulting services. Thank you for the opportunity to submit this proposal.

Sincerely,

ROOFING TECHNOLOGY ASSOCIATES, LTD.

Michael C. Bode, RRC
President

MCB/lab



ROOFING TECHNOLOGY ASSOCIATES, LTD.

38031 SCHOOLCRAFT
LIVONIA, MICHIGAN 48150-1065
(734) 591-4444 • FAX (734) 591-1660 • E-MAIL: rta@rtaltd.com
Web site www.rtaltd.com

FEE AND RATE SCHEDULE PROFESSIONAL SERVICES

PERSONNEL

Fees for our services will be based upon the time worked on the project by professional, technical and clerical personnel according to the following schedule:

	PER HOUR
Senior Project Manager	\$156.00
Project Manager	\$146.00
Senior Roof Consultant	\$133.00
Project Roof Consultant	\$114.00
Staff Roof Consultant*	\$104.00
Senior Roof Technician*	\$98.00
Roof Technician*	\$86.00
CADD Operator*	\$86.00
Secretarial Services*	\$57.00

*For these personnel, overtime work will be charged at a rate equal to 1.3 times the Standard Rate. A premium of 50 percent will be added to hourly rates for depositions and expert witness testimony.

EXPENSES

The following expenses, when incurred in connection with the project, will be charged at the rates shown:

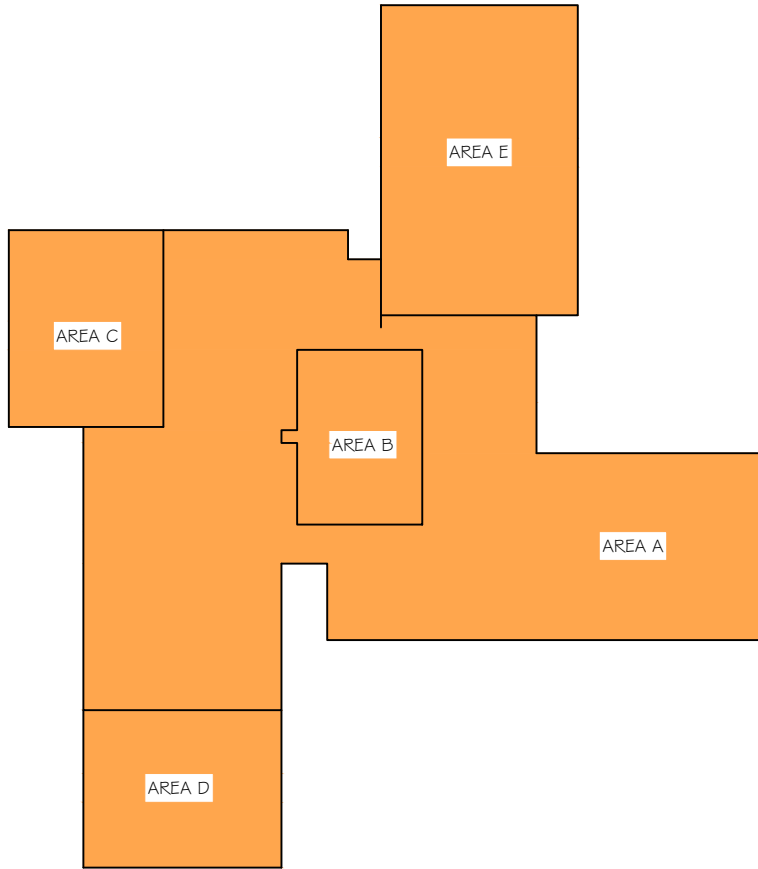
Transportation, Lodging and Subsistence for Out of Town Travel	Cost+15%
Printing, Reproduction, Photographs, Long distance Telephone and Facsimile Charges, Shipping Charges, and Material Purchases	Cost+15%
Vehicle Travel for Project	\$0.85/Mile
Rental of Specialized Field, Laboratory or Monitoring Equipment	Cost+15%

SUBCONTRACTORS/SUBCONSULTANTS

On projects requiring subcontractors or subconsultants, we will obtain the services of reputable contractors or consultants to perform such work. The fees of these contractors or consultants will be added to our invoices plus a 15% service charge.

INVOICES

Progress invoices will be submitted to the client monthly and a final bill will be submitted upon completion of our services. Invoices will show charges for different personnel and expenses. Each invoice is due on presentation and is past due thirty (30) days from invoice date. Client agrees to pay a finance charge of one and one-half percent (1½%) per month on past due accounts. We reserve the right to suspend or terminate work under our agreement upon failure of the client to pay invoices when due.



GENERAL NOTES:

1. All areas and dimensions shown are approximate and based upon rough field measurements taken by representatives of Roofing Technology Associates, Ltd.
2. This drawing should not be used for bidding or estimating purposes. Contractors are responsible for their own field measurements, quantities and verification of conditions shown.

CONDITION		SERVICEABLE LIFE	RCI
failed		0 - 1 years	0 - 30
very poor		1 - 3 years	31 - 45
poor		3 - 6 years	46 - 55
fair		6 - 10 years	56 - 65
fair to good		10 - 15 years	66 - 75
good		15+ years	76 - 100

ROOF AREA PLAN

not to scale

NOTE: components shown are new unless noted as existing

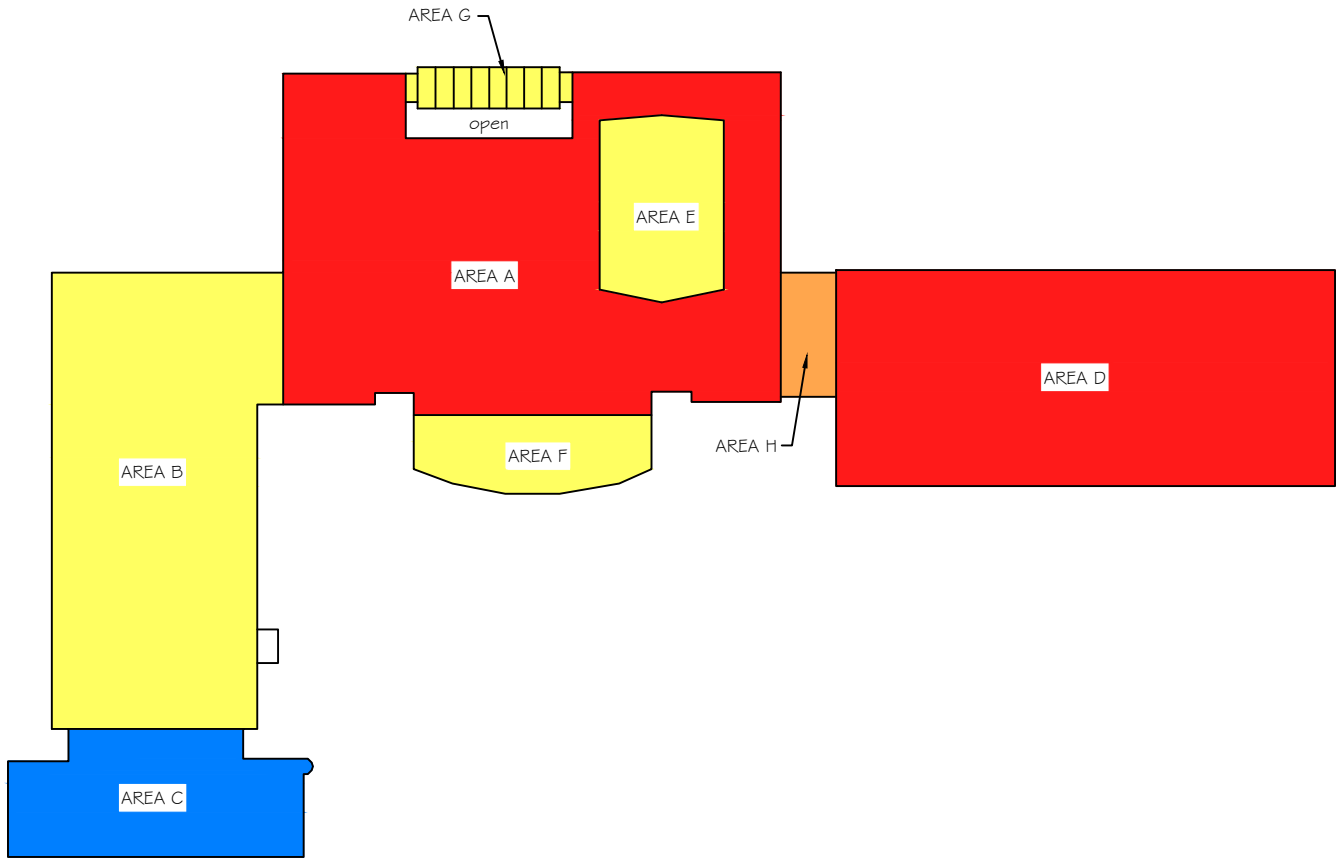


ROOFING TECHNOLOGY ASSOCIATES, LTD.

38031 SCHOOLCRAFT ROAD
LIVONIA, MICHIGAN 48150-1065
(734) 591-4444

LIVONIA PUBLIC SCHOOLS
KENNEDY ELEMENTARY SCHOOL
14201 HUBBARD ST
LIVONIA, MICHIGAN

Project No: 17-043	Drawn By: JDS	Detail No: 9
Date: JUNE, 2017	Checked By: MCB	



GENERAL NOTES:

1. All areas and dimensions shown are approximate and based upon rough field measurements taken by representatives of Roofing Technology Associates, Ltd.
2. This drawing should not be used for bidding or estimating purposes. Contractors are responsible for their own field measurements, quantities and verification of conditions shown.

CONDITION		SERVICEABLE LIFE	RCI
failed		0 - 1 years	0 - 30
very poor		1 - 3 years	31 - 45
poor		3 - 6 years	46 - 55
fair		6 - 10 years	56 - 65
fair to good		10 - 15 years	66 - 75
good		15+ years	76 - 100

ROOF AREA PLAN

not to scale

NOTE: components shown are new unless noted as existing

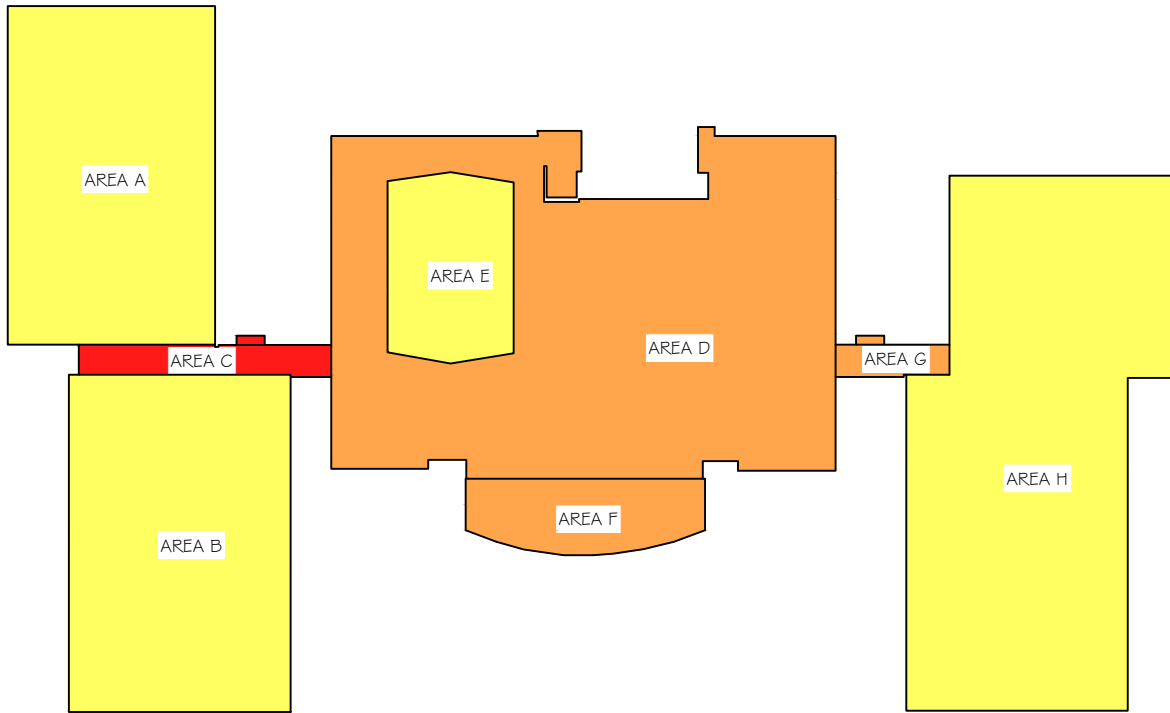


ROOFING TECHNOLOGY ASSOCIATES, LTD.

38031 SCHOOLCRAFT ROAD
LIVONIA, MICHIGAN 48150-1065
(734) 591-4444

LIVONIA PUBLIC SCHOOLS
WEBSTER ELEMENTARY SCHOOL
32401 PEMBROKE ST
LIVONIA, MICHIGAN

Project No: 17-043	Drawn By: JDS	Detail No: 13
Date: JUNE, 2017	Checked By: MCB	



GENERAL NOTES:

1. All areas and dimensions shown are approximate and based upon rough field measurements taken by representatives of Roofing Technology Associates, Ltd.
2. This drawing should not be used for bidding or estimating purposes. Contractors are responsible for their own field measurements, quantities and verification of conditions shown.

CONDITION		SERVICEABLE LIFE	RCI
failed		0 - 1 years	0 - 30
very poor		1 - 3 years	31 - 45
poor		3 - 6 years	46 - 55
fair		6 - 10 years	56 - 65
fair to good		10 - 15 years	66 - 75
good		15+ years	76 - 100

ROOF AREA PLAN

not to scale

NOTE: components shown are new unless noted as existing



ROOFING TECHNOLOGY ASSOCIATES, LTD.

38031 SCHOOLCRAFT ROAD
LIVONIA, MICHIGAN 48150-1065
(734) 591-4444

LIVONIA PUBLIC SCHOOLS
COOLIDGE ELEMENTARY SCHOOL
30500 CURTIS RD
LIVONIA, MICHIGAN

Project No: 17-043	Drawn By: JDS	Detail No: 4
Date: JUNE, 2017	Checked By: MCB	