

ALSEA SCHOOL DISTRICT BOARD REPORT

Name: Heather Shunk **Position:** Principal

BOARD MEETING DATE: February 9, 2026

Live Classroom Platform Update: Learn at Home Oregon explored two alternative live classroom platforms to determine whether a successful transition to a different system was feasible. Each option presented significant connectivity challenges that resulted in interruptions to instruction. In response to concerns raised by teachers, students, and families, the district acted quickly and returned to the original, well-functioning platform. Throughout the process, staff demonstrated flexibility and professionalism, maintaining instructional continuity and supporting students during the transition. The prompt response and restoration of a stable platform have been met with appreciation from teachers, students, and families.

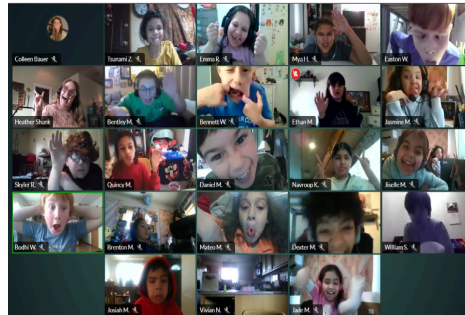
[Link for January Assembly Slides](#)

[Link for February School-Wide Newsletter](#)

January Assembly - Celebrations for birthdays, attendance, welcoming new students, Tree House introductions and house assignments, dances, all the great learning happening in classes, students of the month, and sharing what we learned about “Authenticity” and how important it is to bravely be yourself. Introduction of our wonderful new SPED/ GED Ed. IA Substitute Mrs. Milligan.



Shout out to our K/1 teacher Courtney Waverek who traveled around the northern part of Oregon to visit with 17 of our students and their families during Winter break! This was a tremendous gift for everyone and is a great example of the heart our teachers put into their work and students.



Tree House Community Model Update

Learn at Home Oregon launched the Tree House community model through a schoolwide assembly, generating strong student excitement and engagement. Tree Houses met the same day to begin community connection and team formation. These intentional multi-age groupings promote role modeling, peer support, encouragement, and leadership, opportunities that benefit all students. Teachers demonstrated strong buy-in, enthusiasm, and creativity in the launch and are excited about the positive impact on student connection and engagement. Tree Houses are collaboratively developing a shared color, promise aligned to a staff-selected character trait, and a symbol and crest, with future plans for Tree House t-shirts to reinforce school pride and belonging.

Belated School Board Appreciation Month

Learn at Home Oregon students shared heartfelt reflections about what LaHO means to them through a short video that will be sent separately. Their messages highlight how meaningful this school is to their learning and well-being and express sincere appreciation for the School Board’s continued support of Learn at Home Oregon and the district.

