

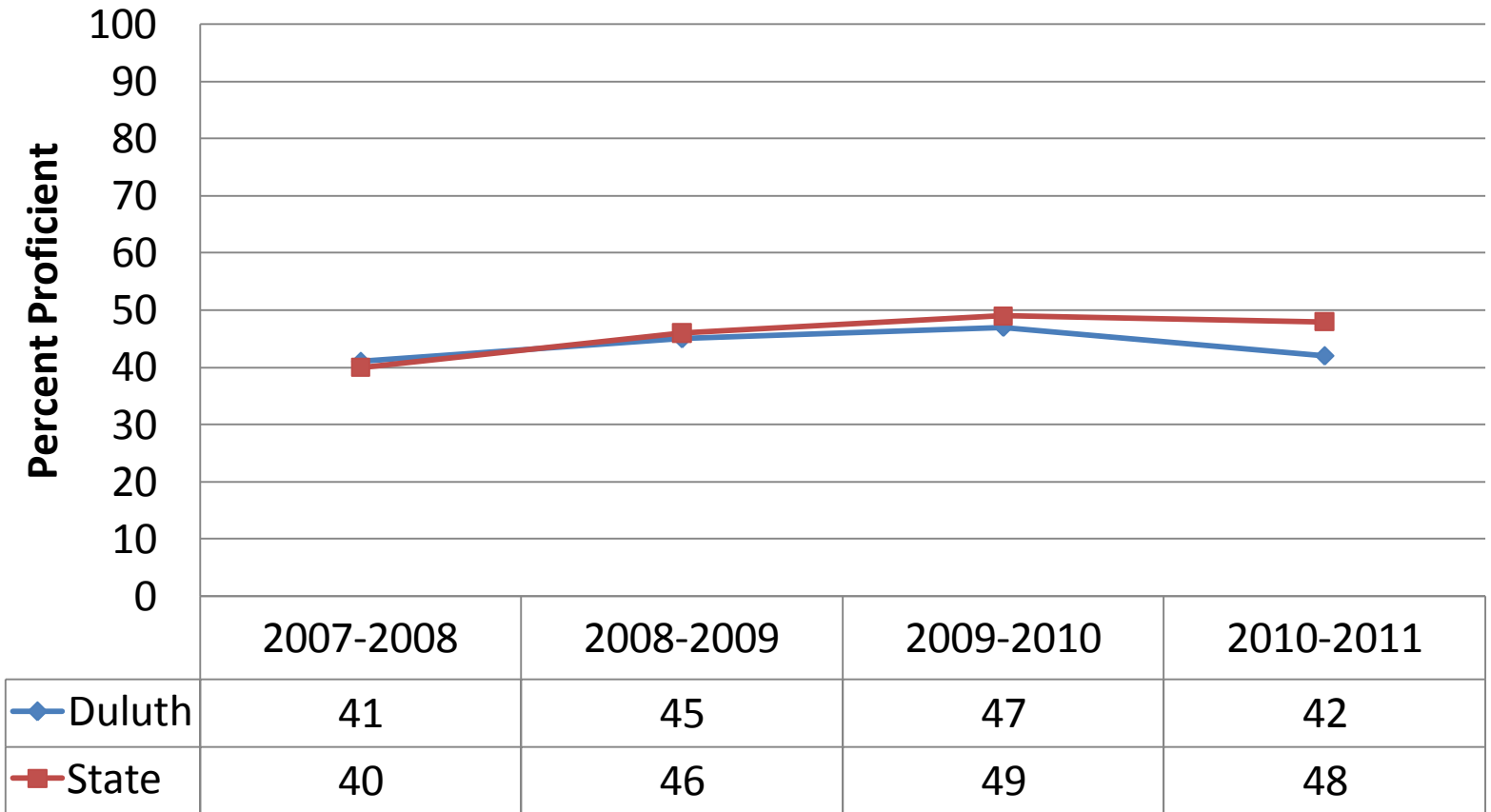
2010-2011 MCA-II Science Results

Duluth Public Schools

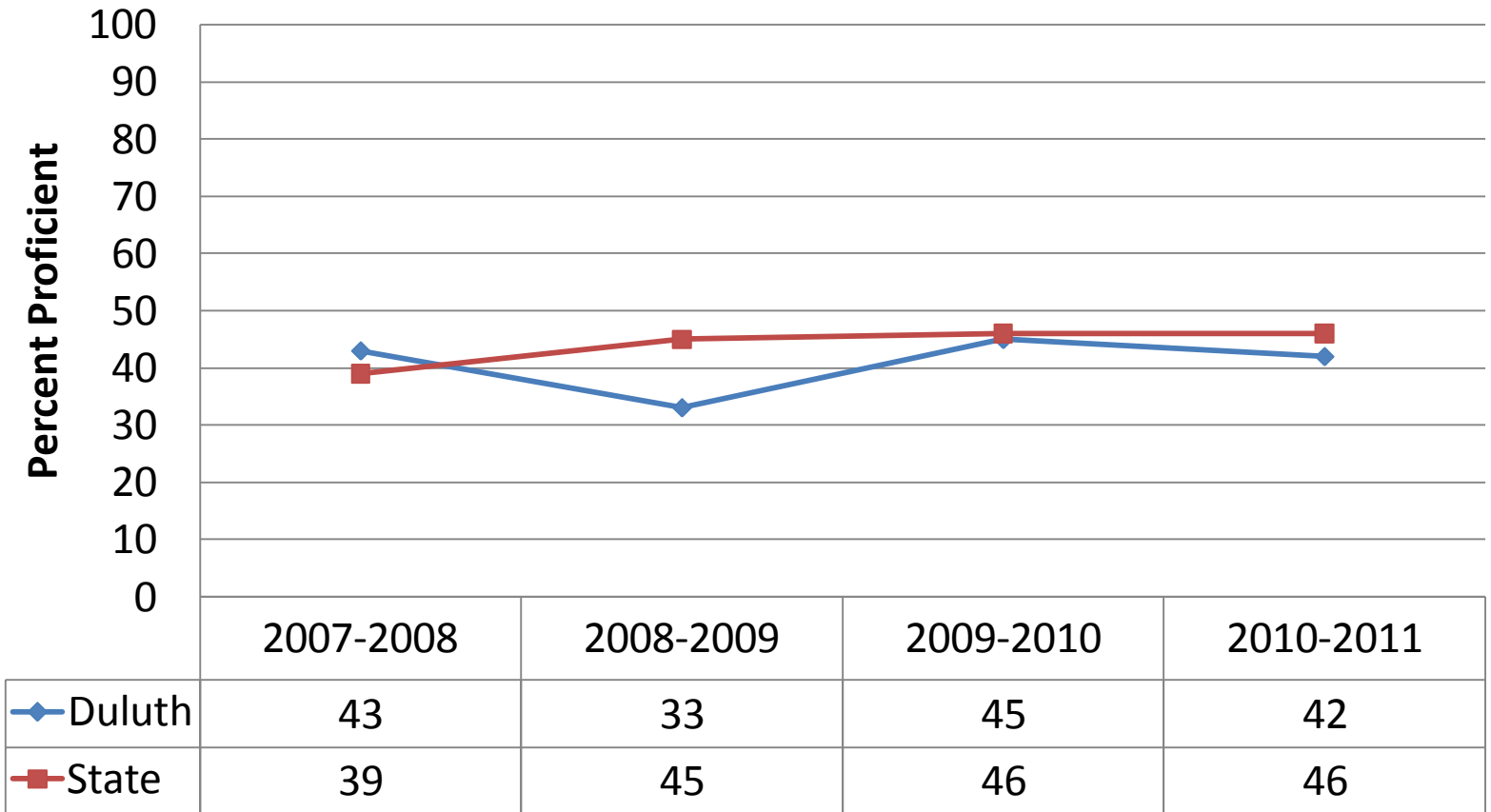
Prepared by: Tawnyea Lake,
PhD
Director of Assessment,
Evaluation, and Performance

9/14/2011

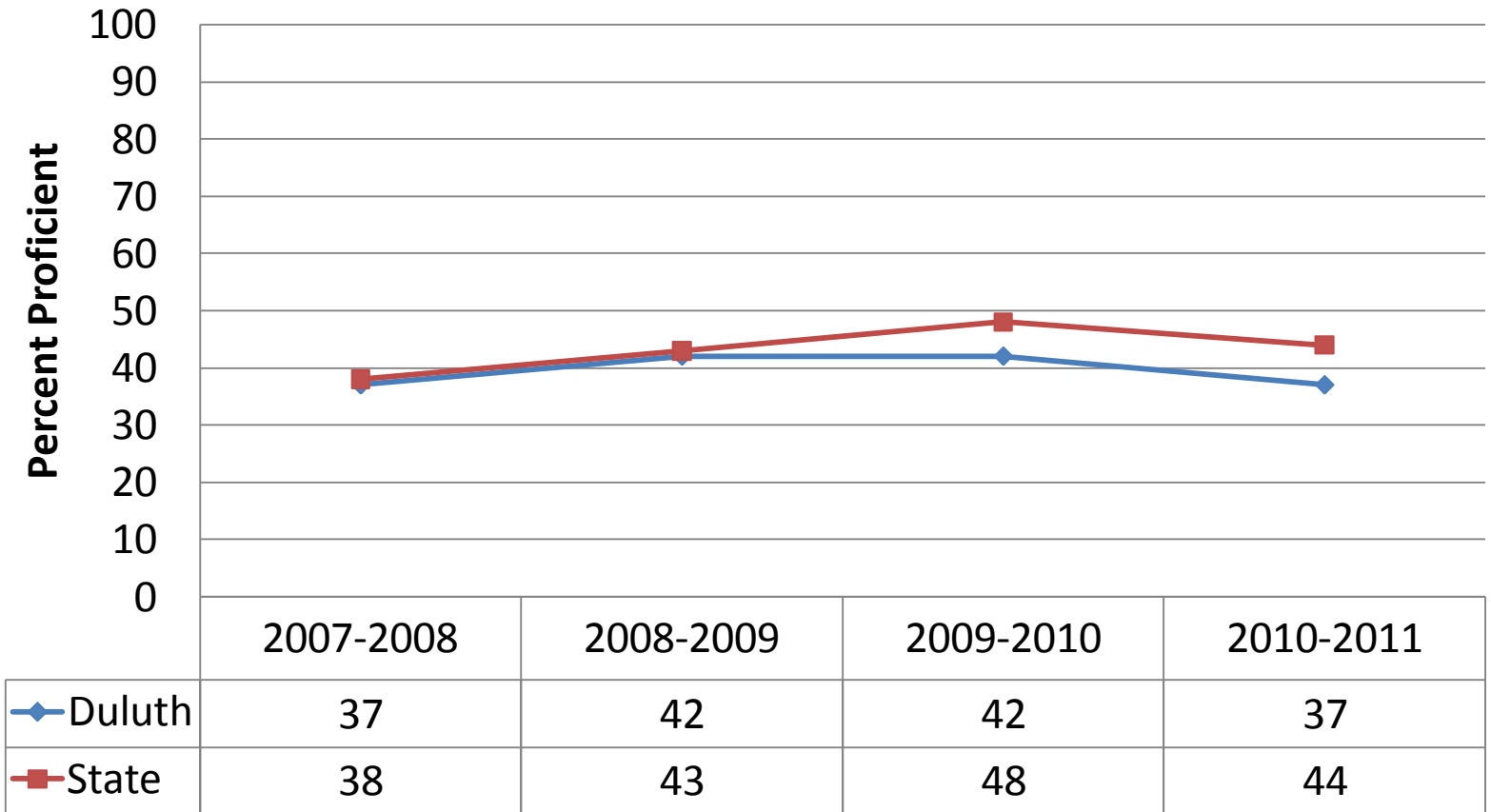
MCA-II Science District – All Grades



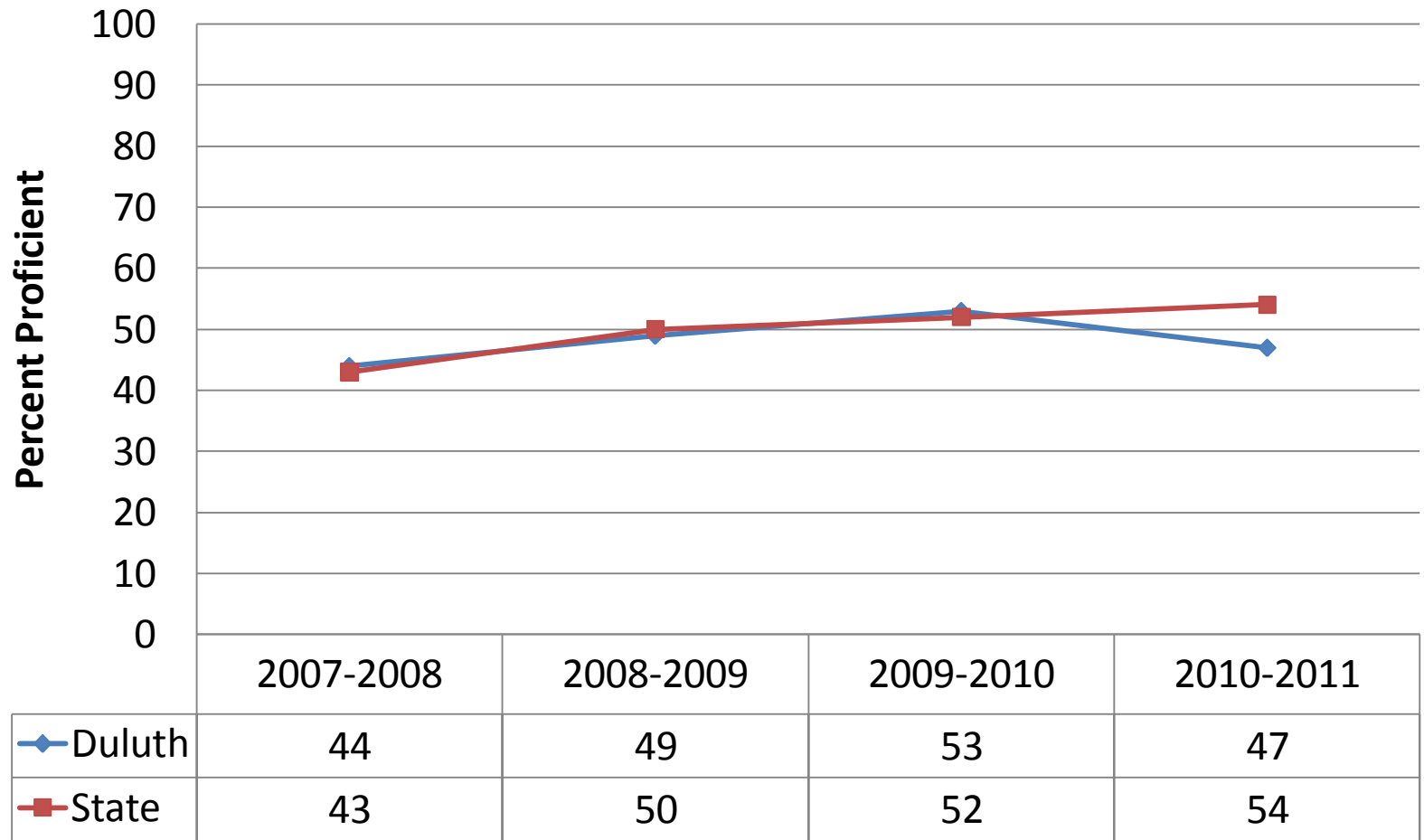
MCA-II Science District – Grade 5



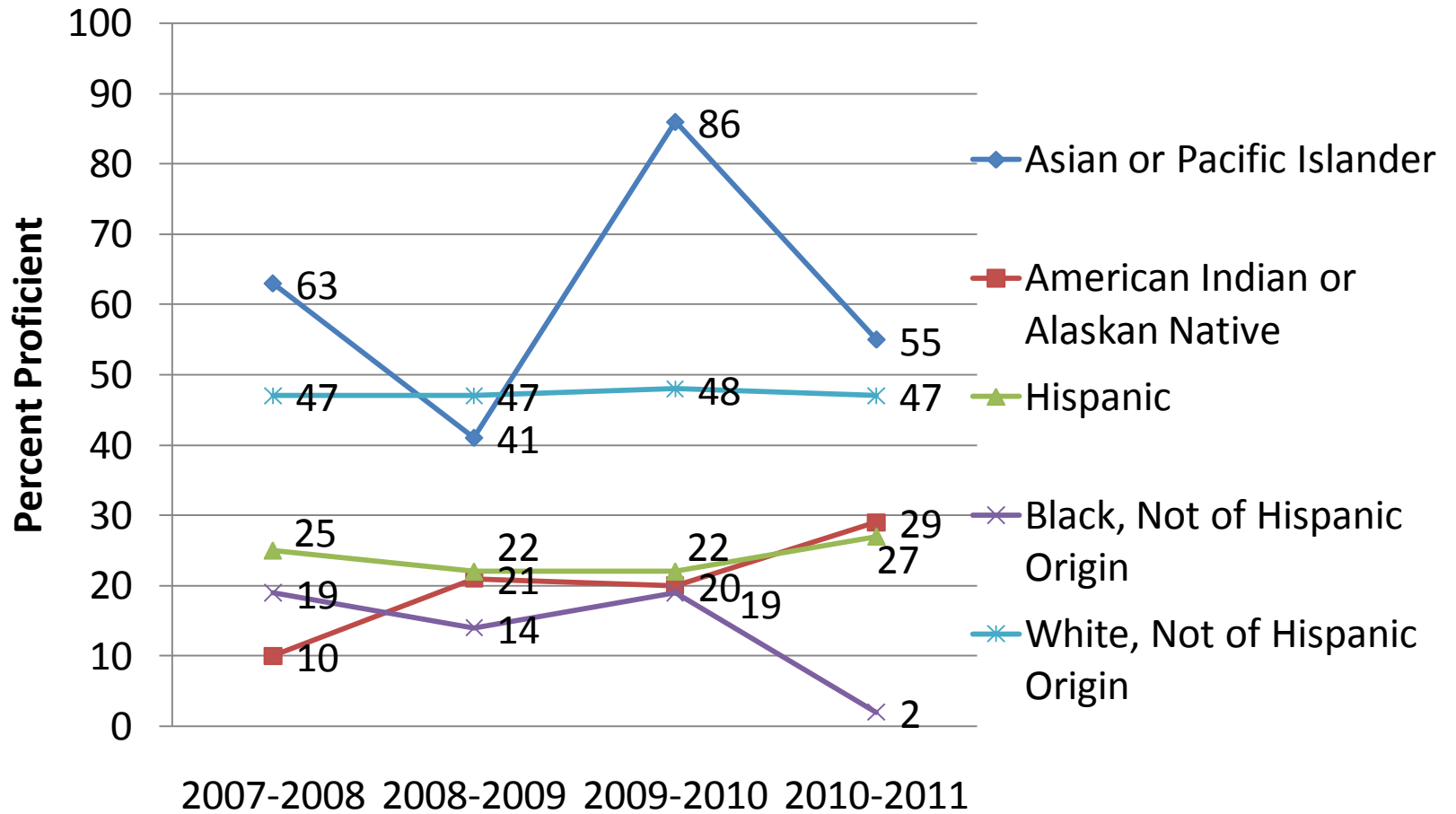
MCA-II Science District – Grade 8



MCA-II Science District – High School

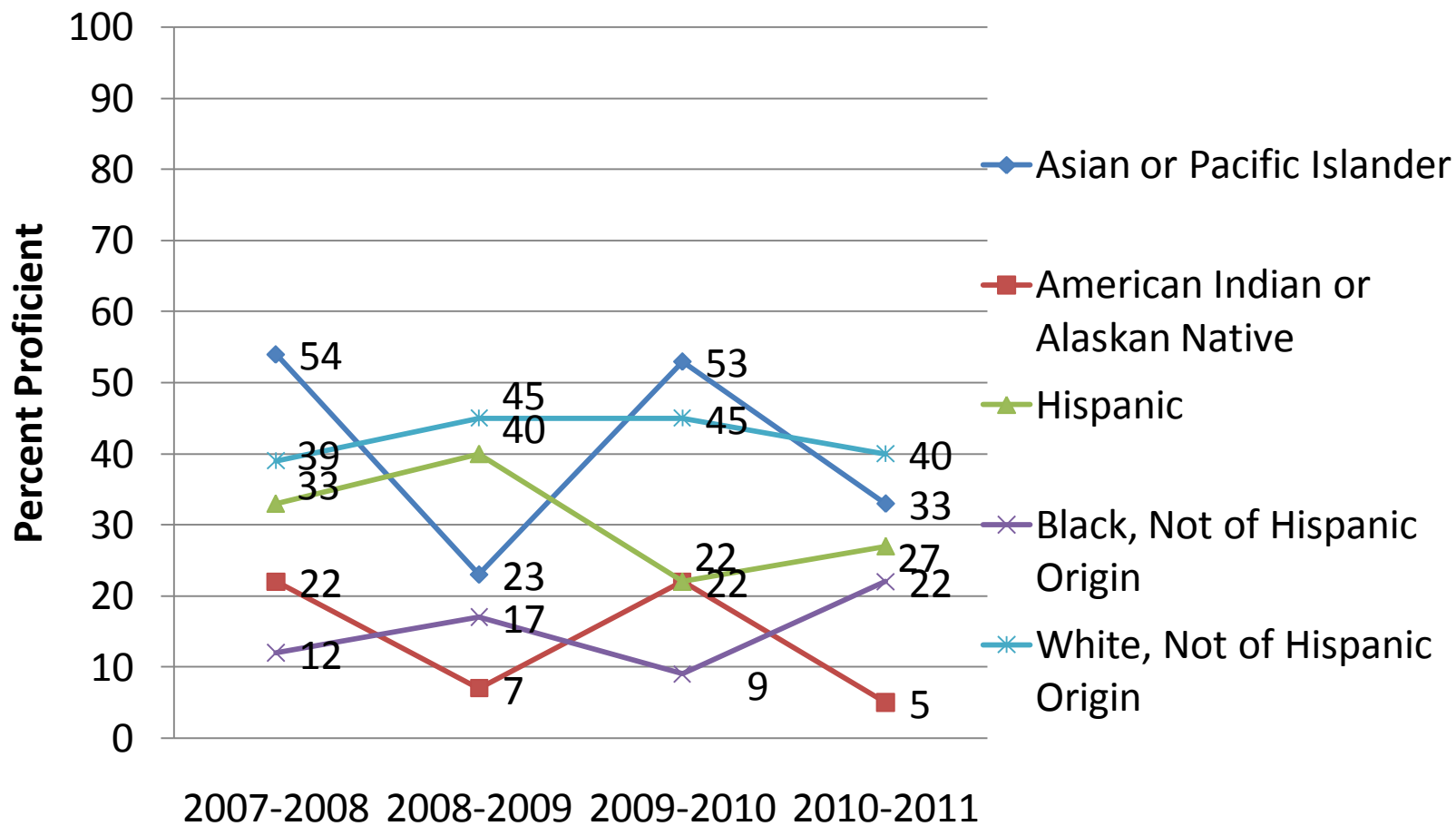


By Ethnic Subgroup Over Time - Grade 5

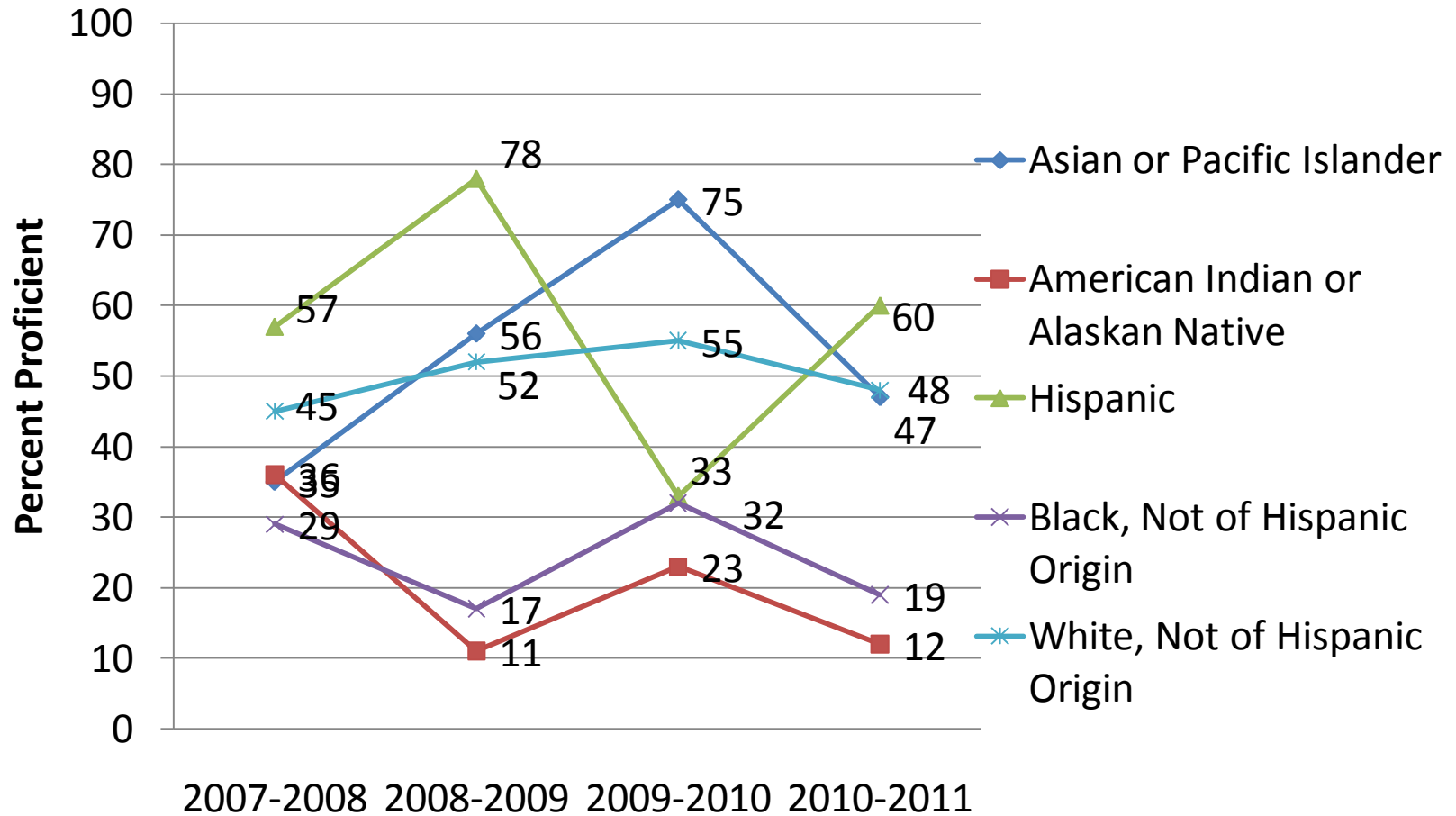


MCA-II Science Results

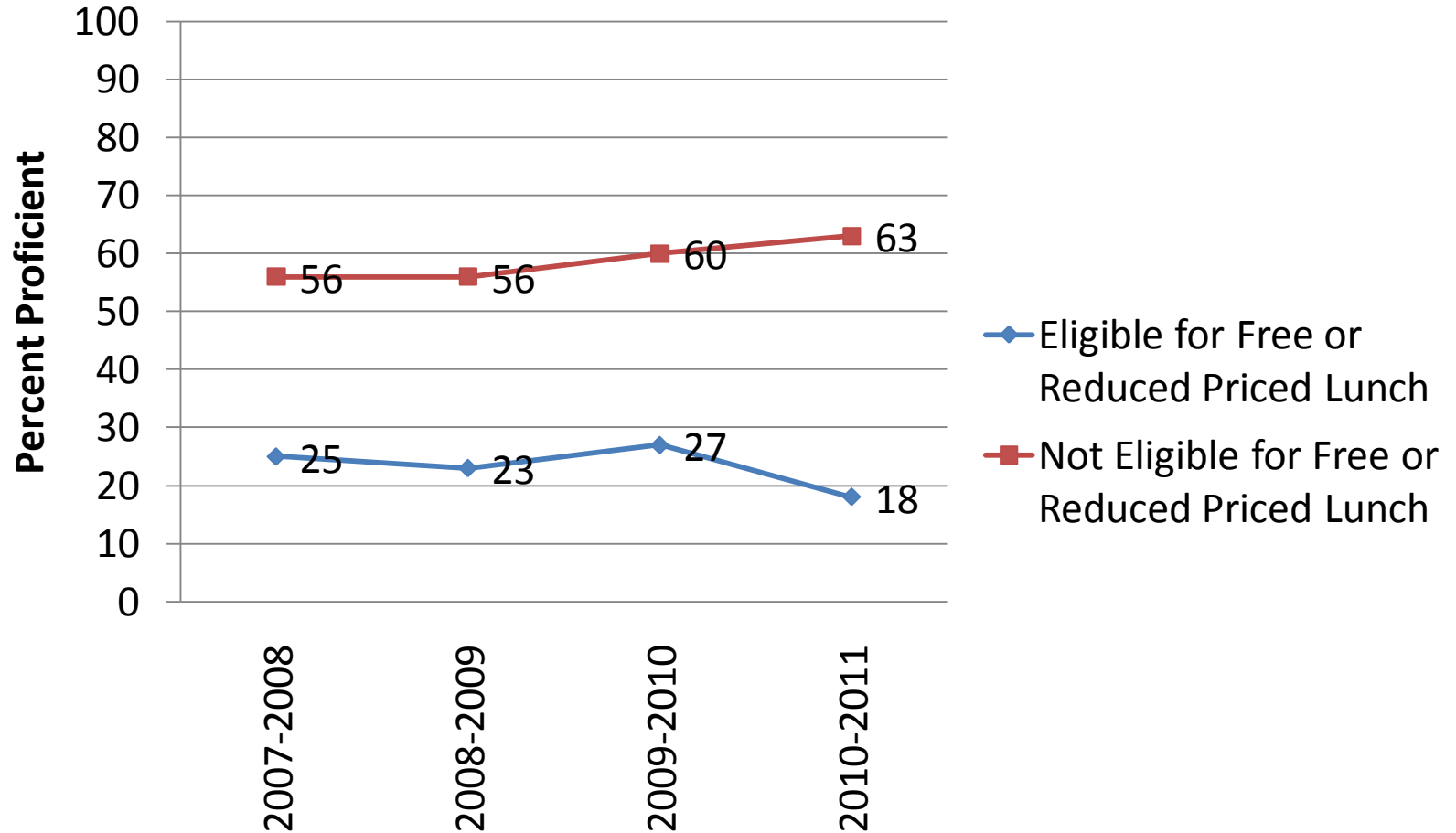
By Ethnic Subgroup Over Time - Grade 8



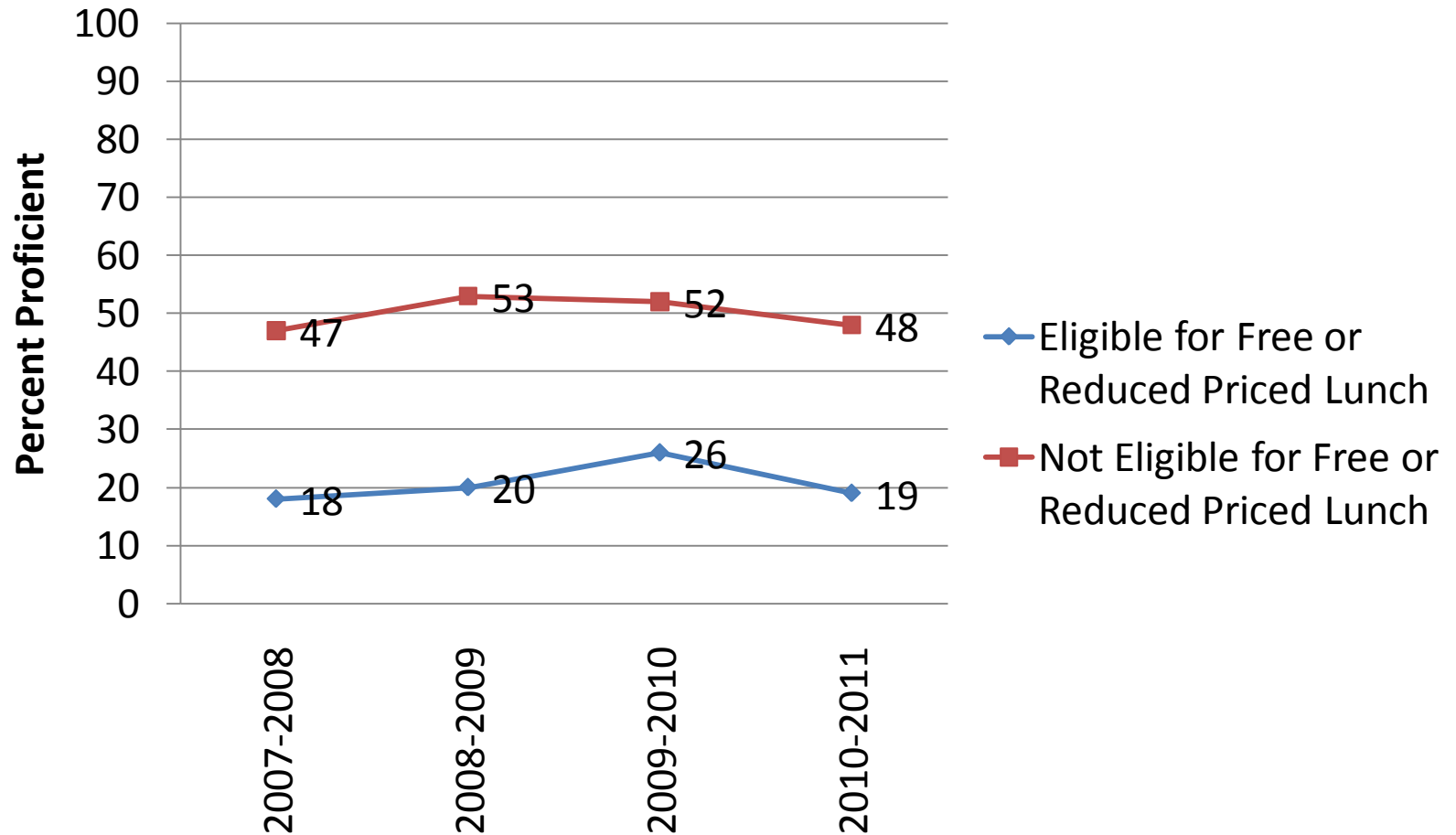
MCA-II Science Results By Ethnic Subgroup Over Time - High School



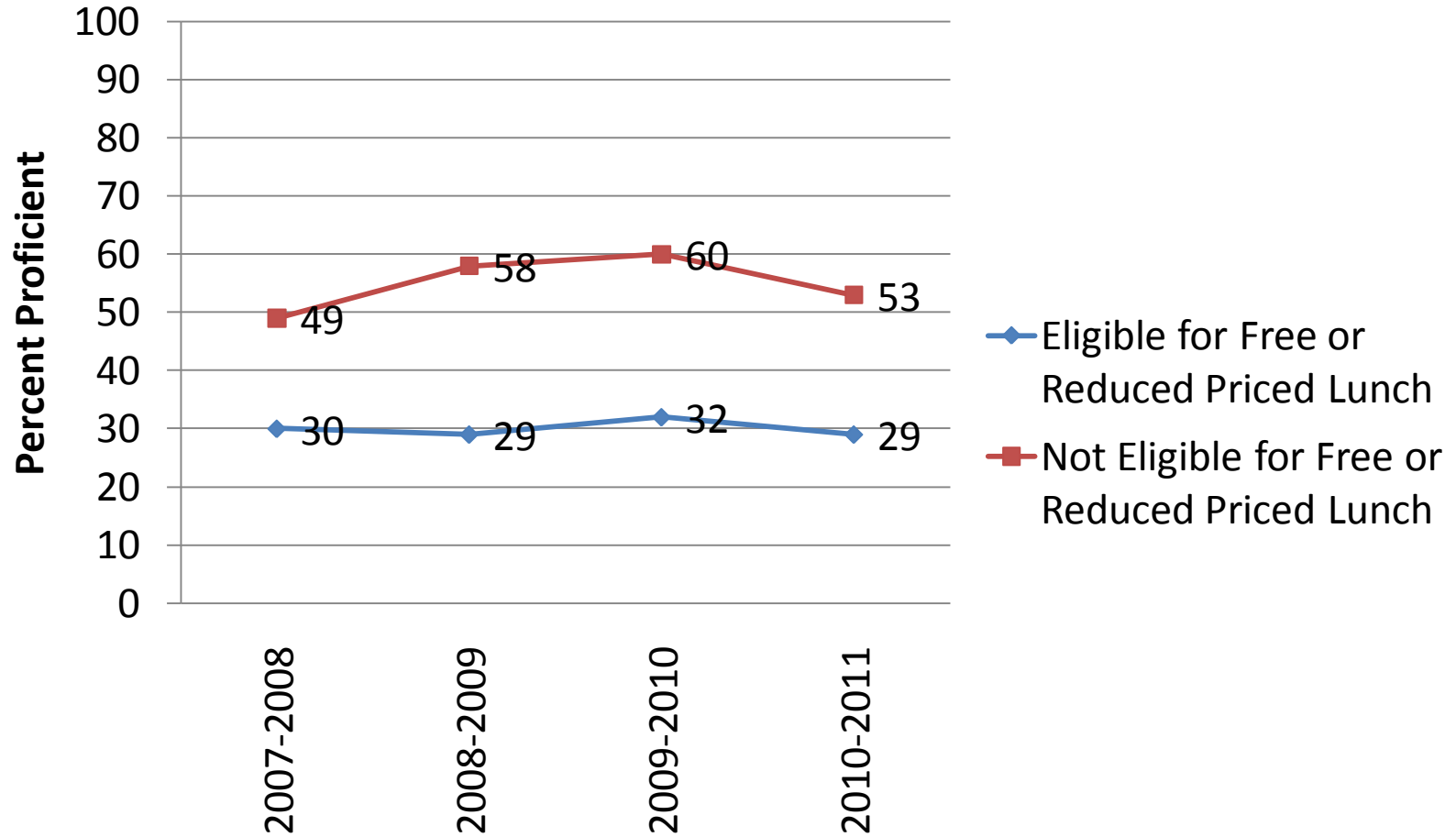
MCA-II Science Results By Economic Subgroup Over Time - Grade 5



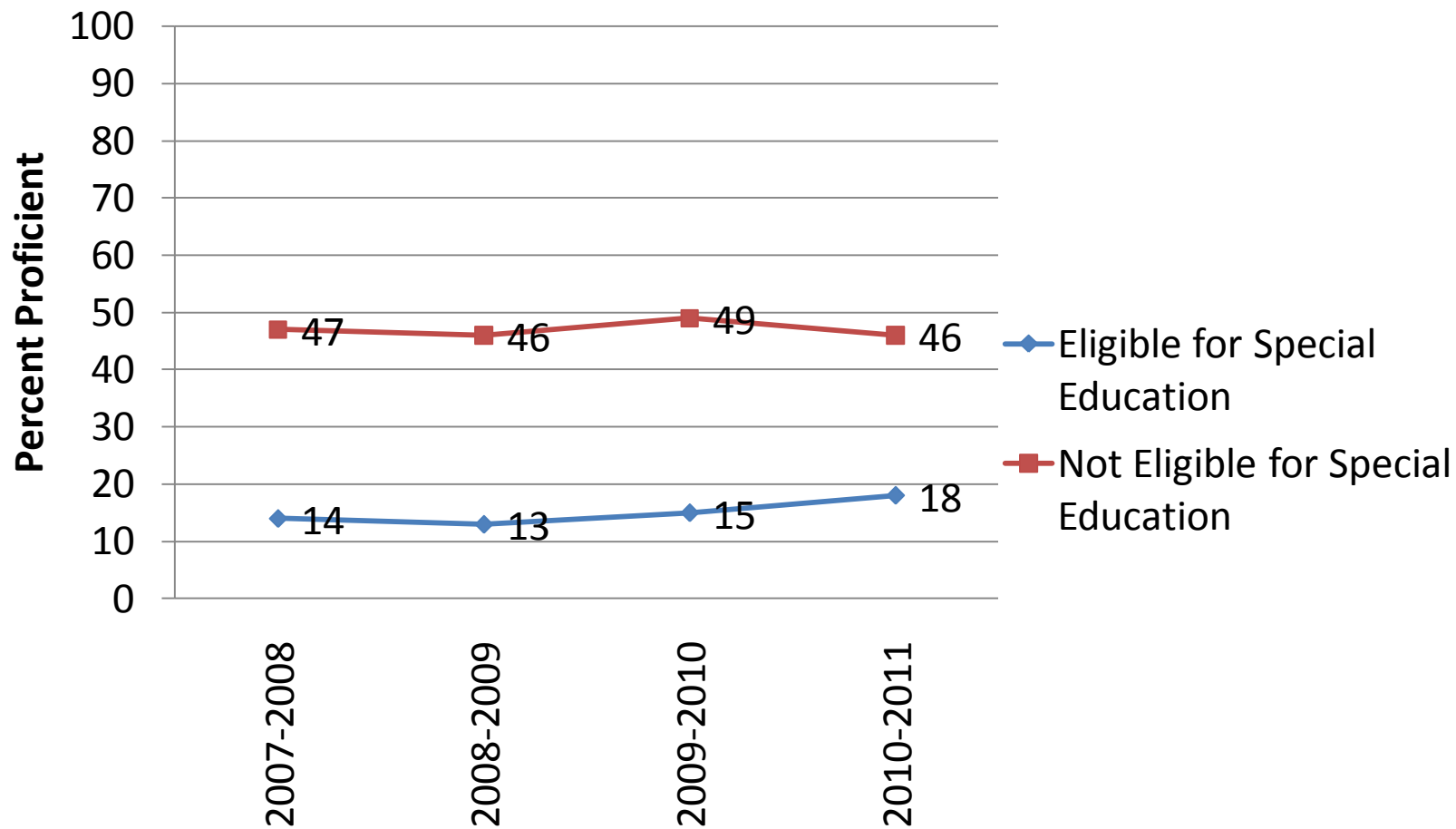
MCA-II Science Results By Economic Subgroup Over Time - Grade 8



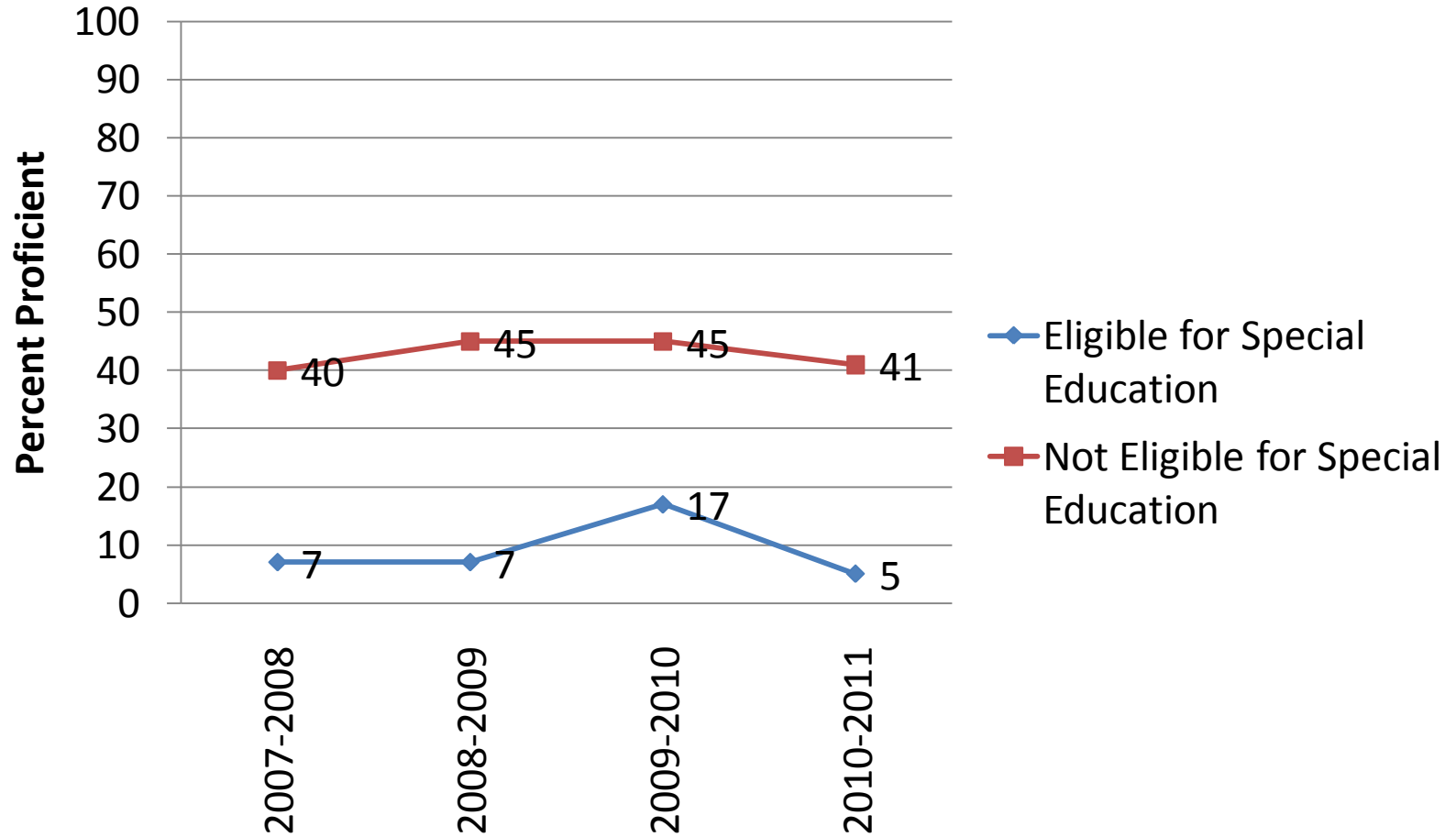
MCA-II Science Results By Economic Subgroup Over Time- High School



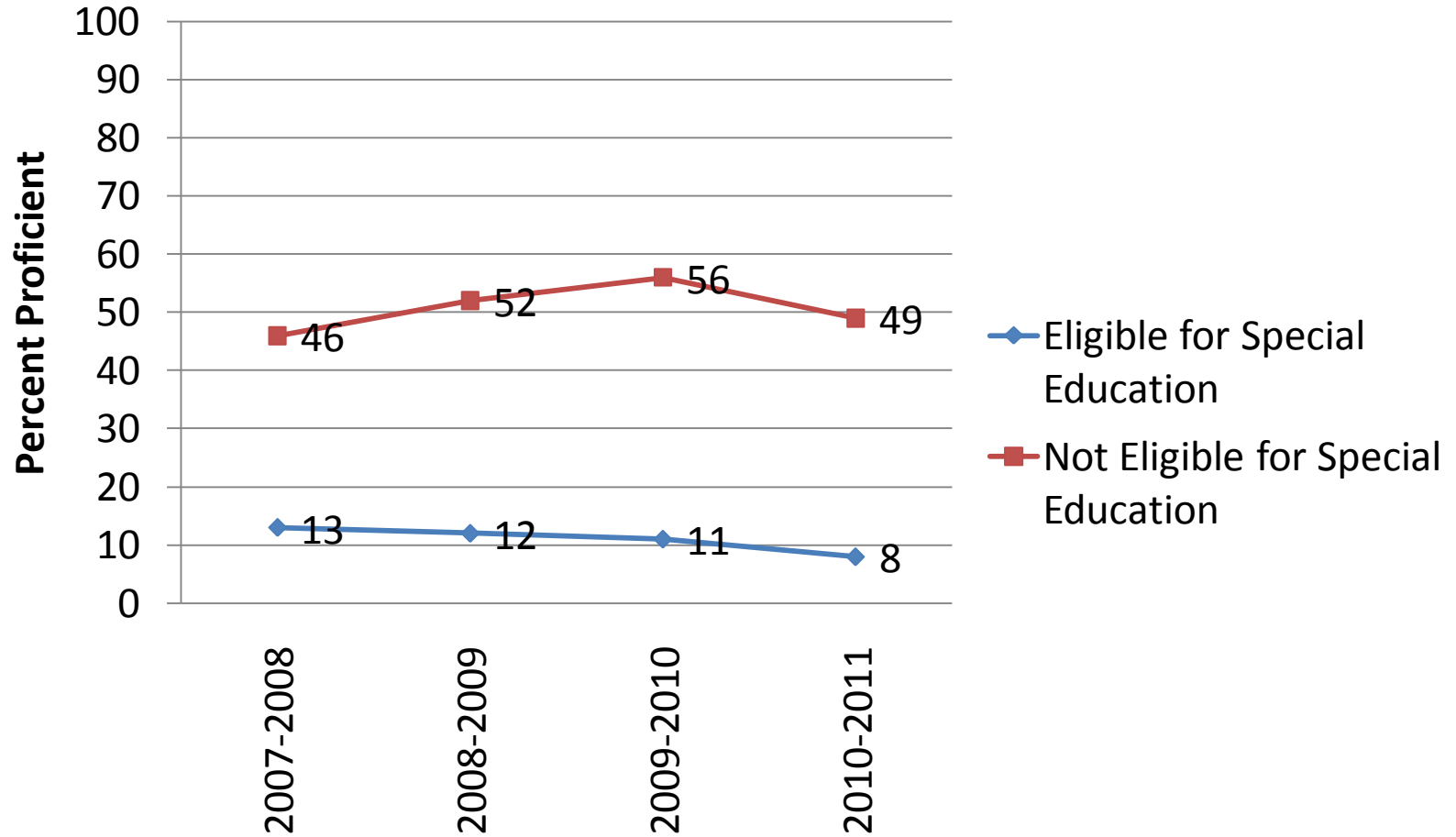
MCA-II Science Results By Special Ed Status Over Time - Grade 5



MCA-II Science Results By Special Ed Status Over Time - Grade 8

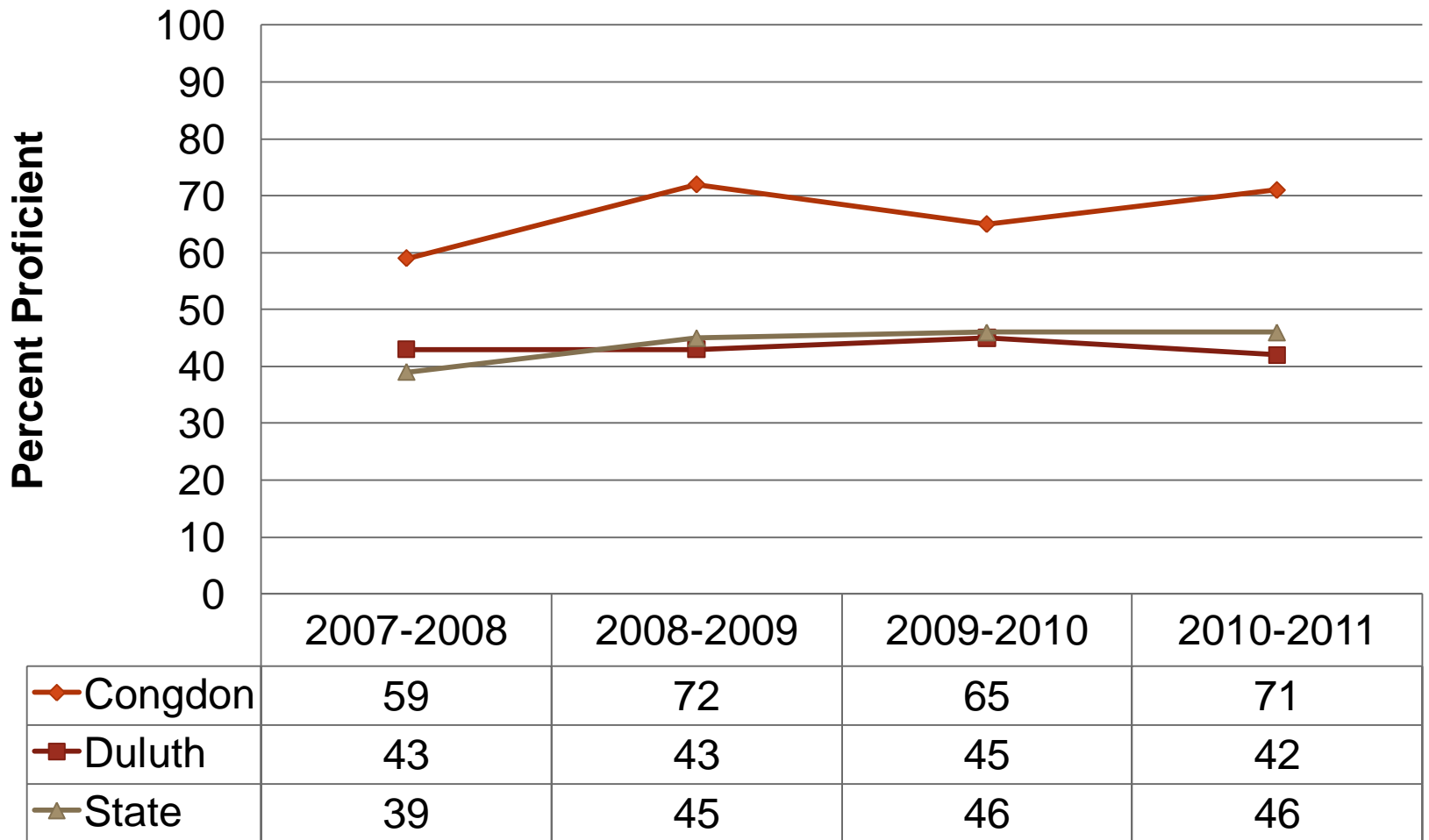


MCA-II Science Results By Special Ed Status Over Time - High School

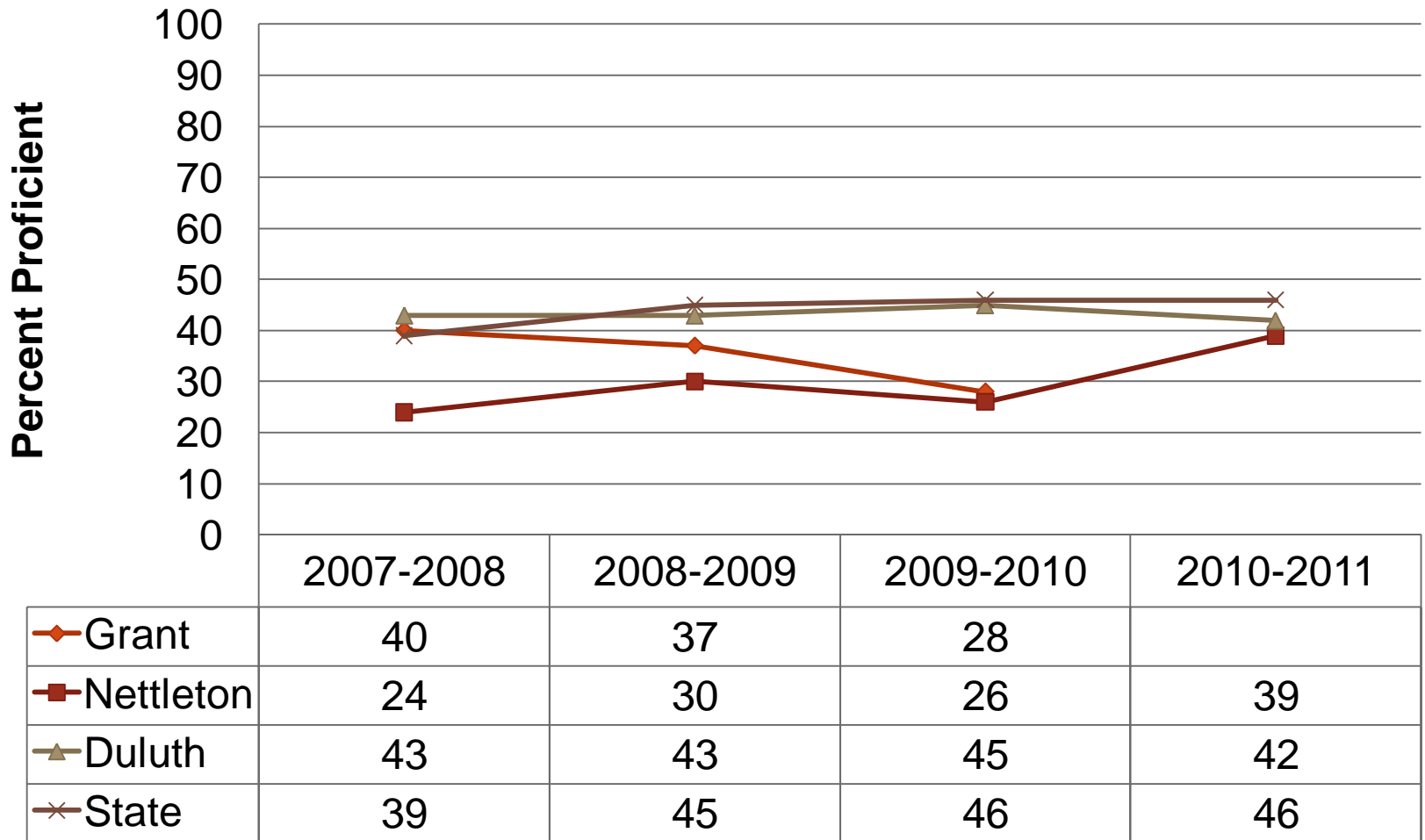


School Summary Data

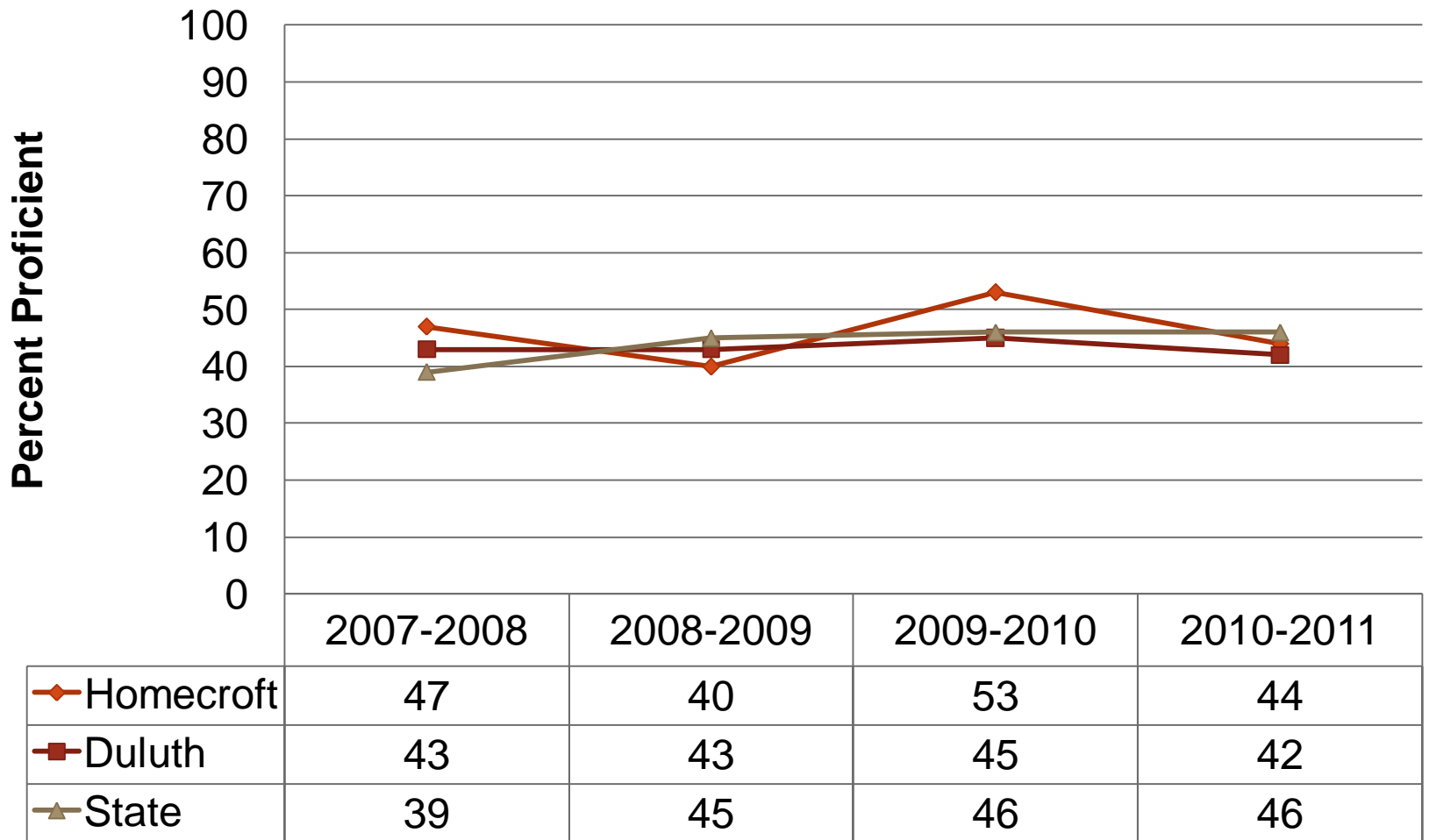
MCA-II Science Congdon Park



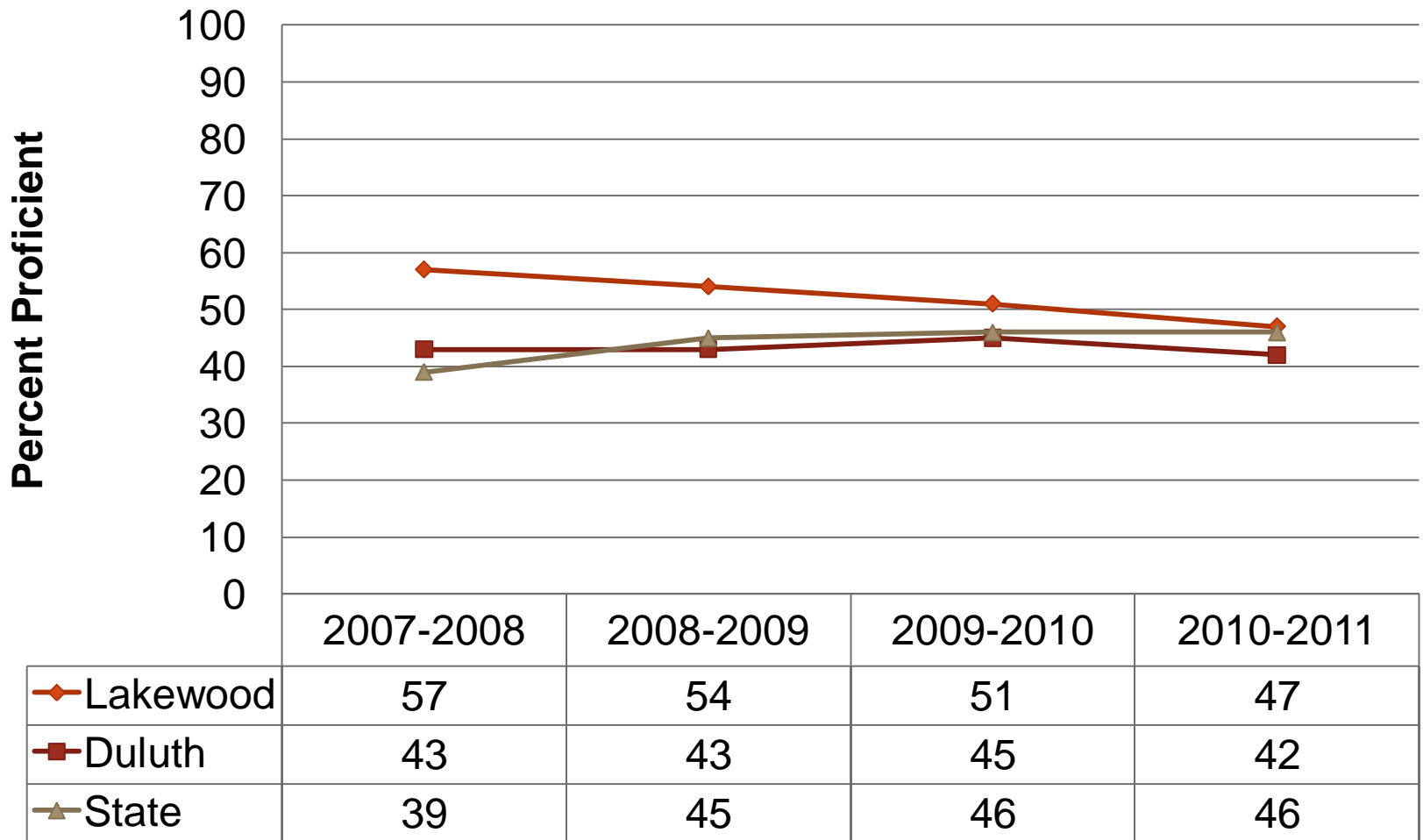
MCA-II Science Nettleton



MCA-II Science Homecroft

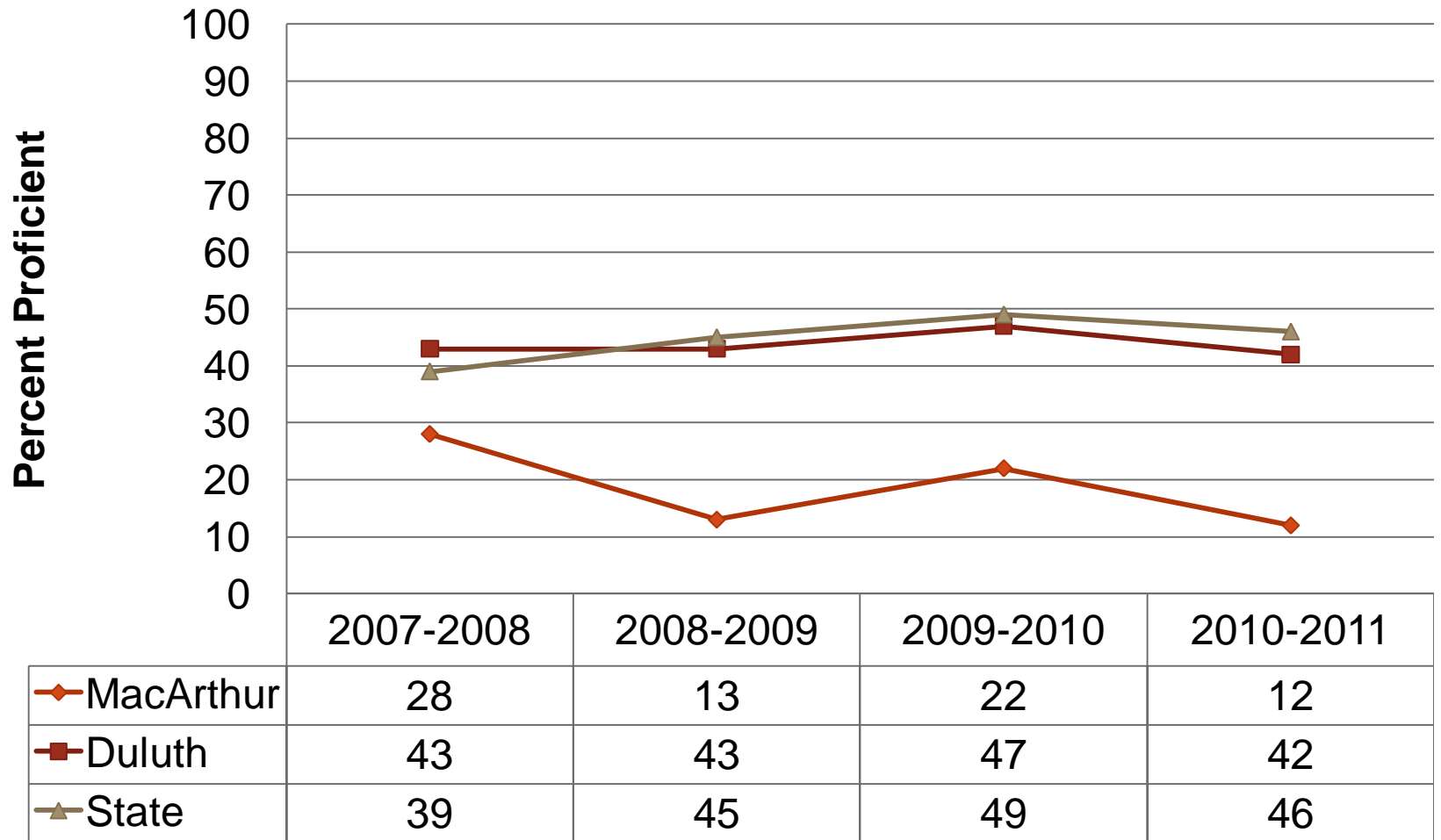


MCA-II Science Lakewood



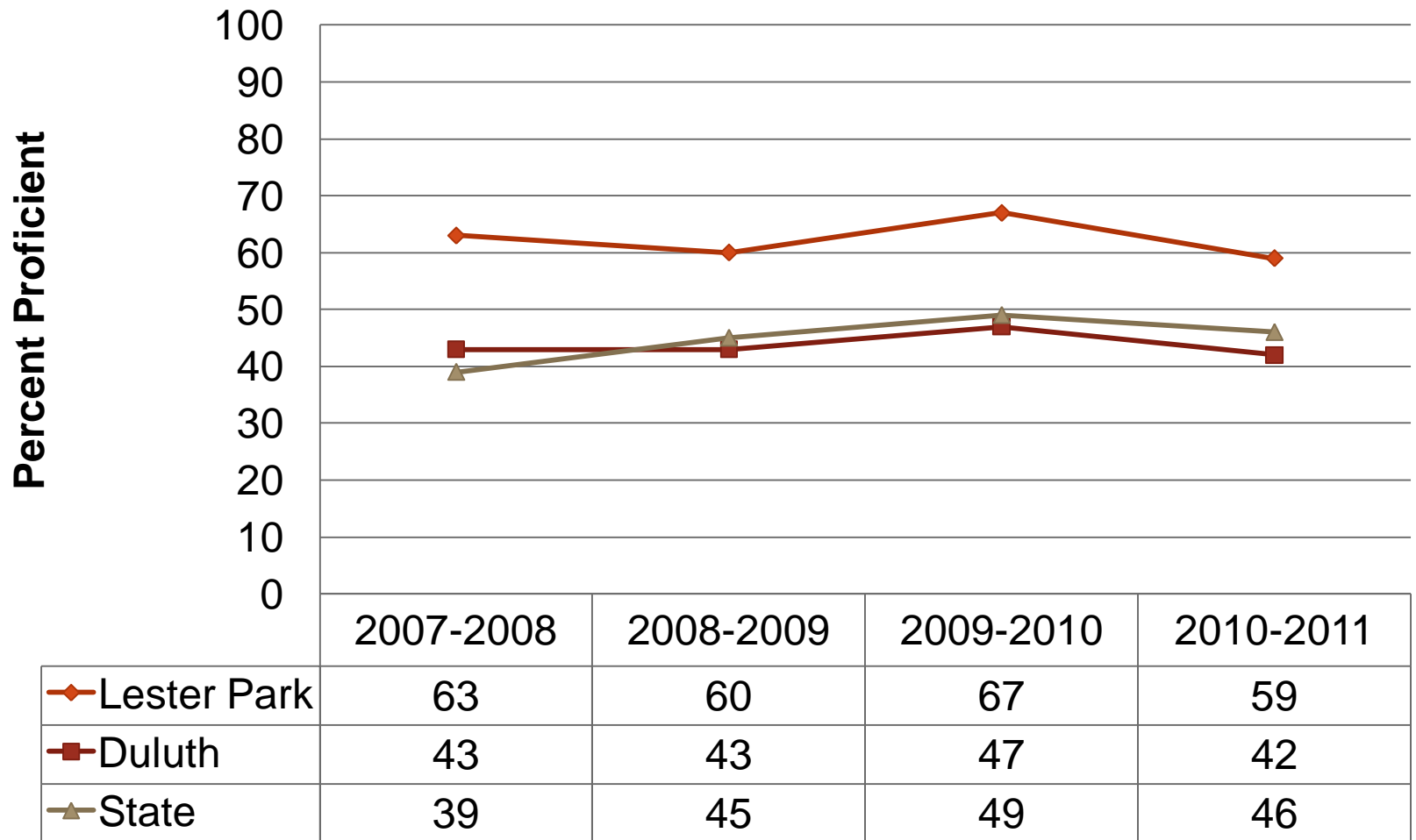
MCA-II

Laura MacArthur

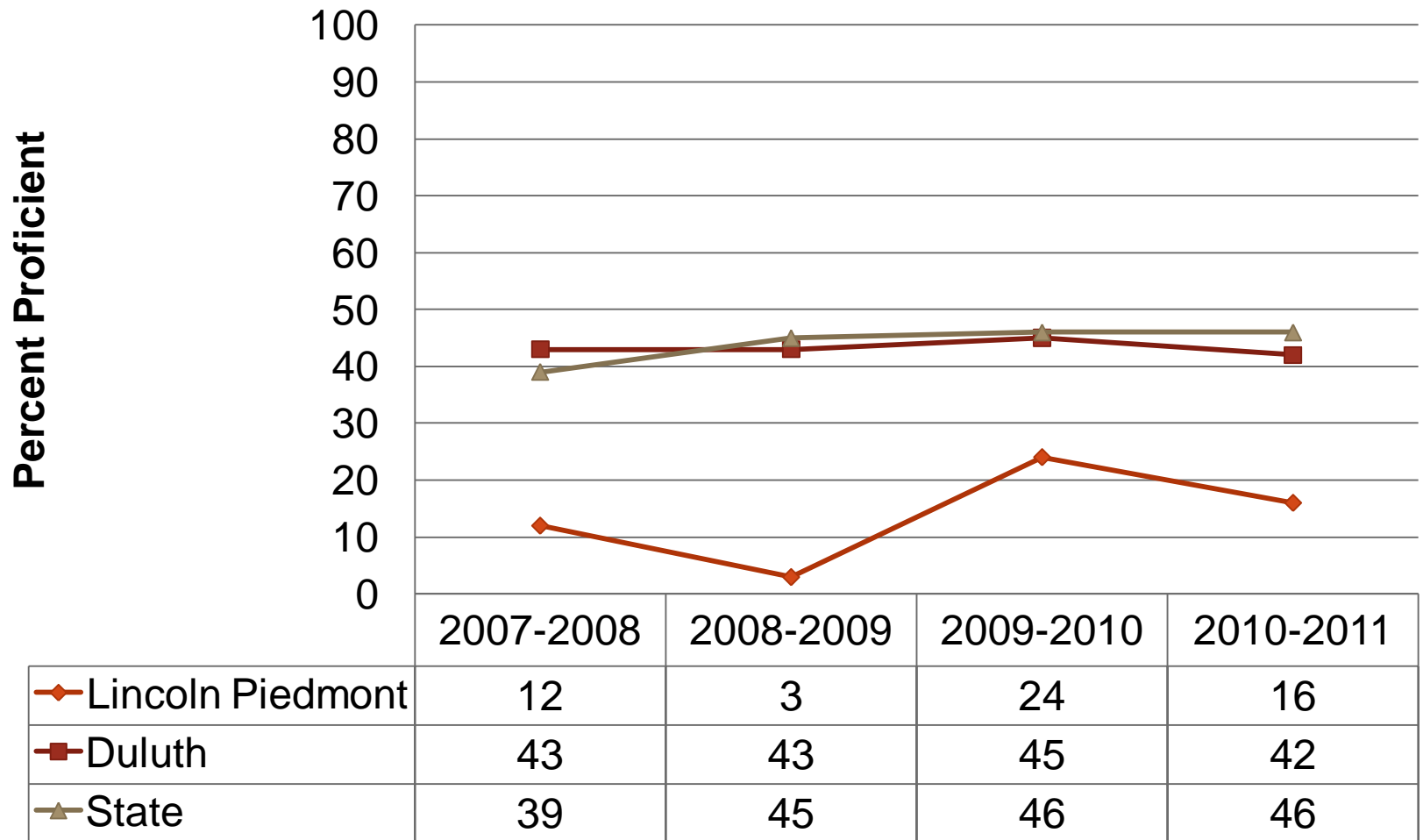


MCA-II Science

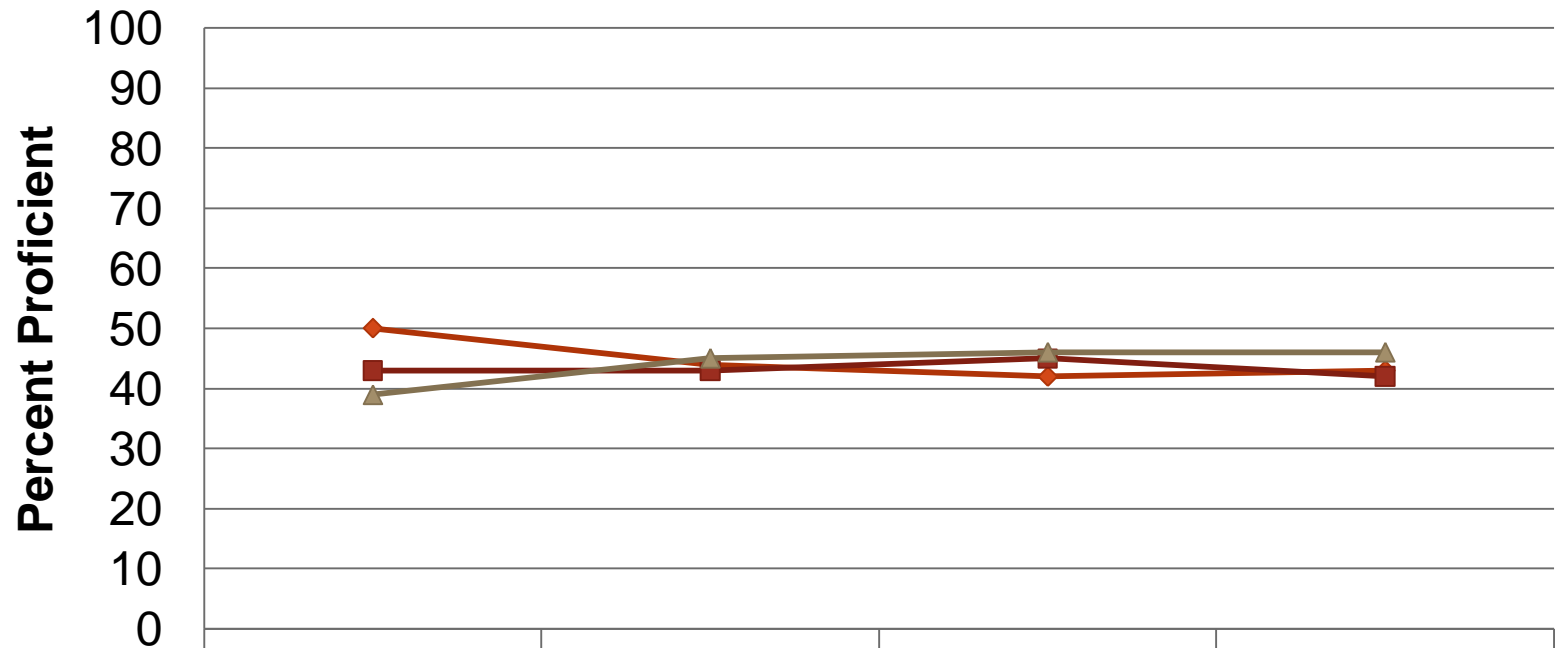
Lester Park School



MC-II Science Lincoln Piedmont

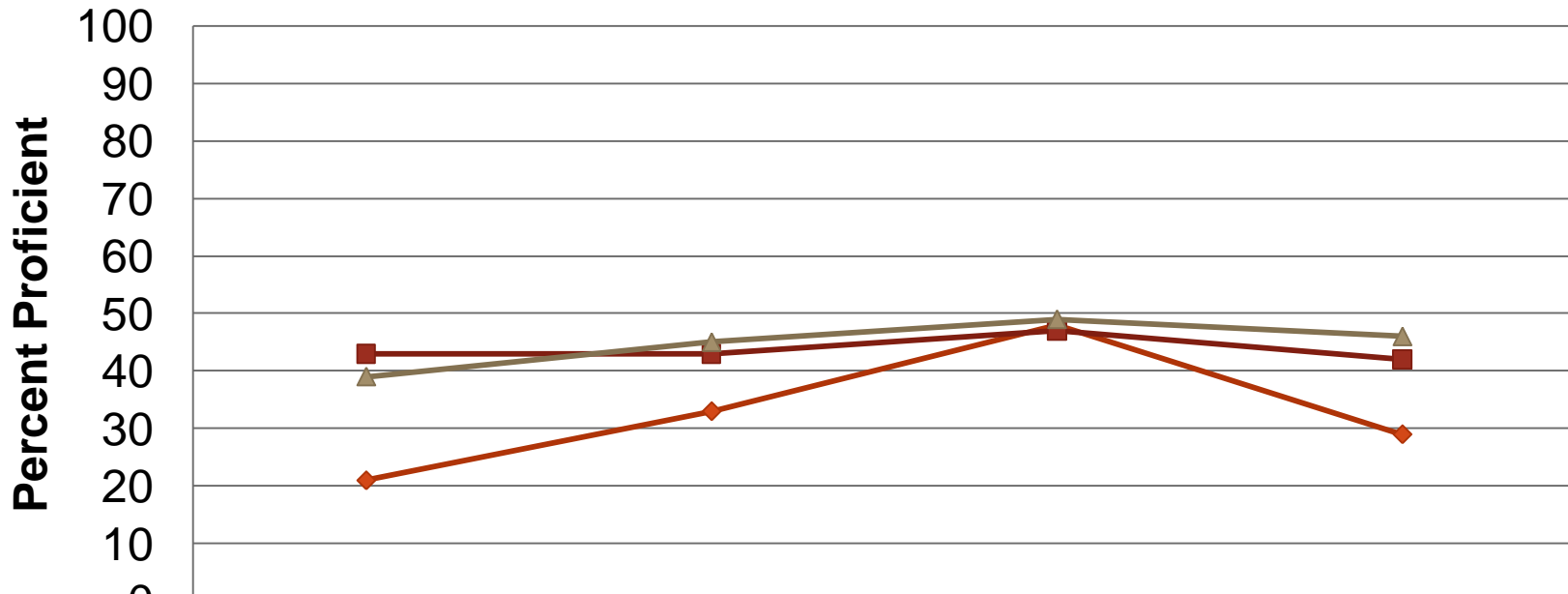


MCA-II Science Lowell



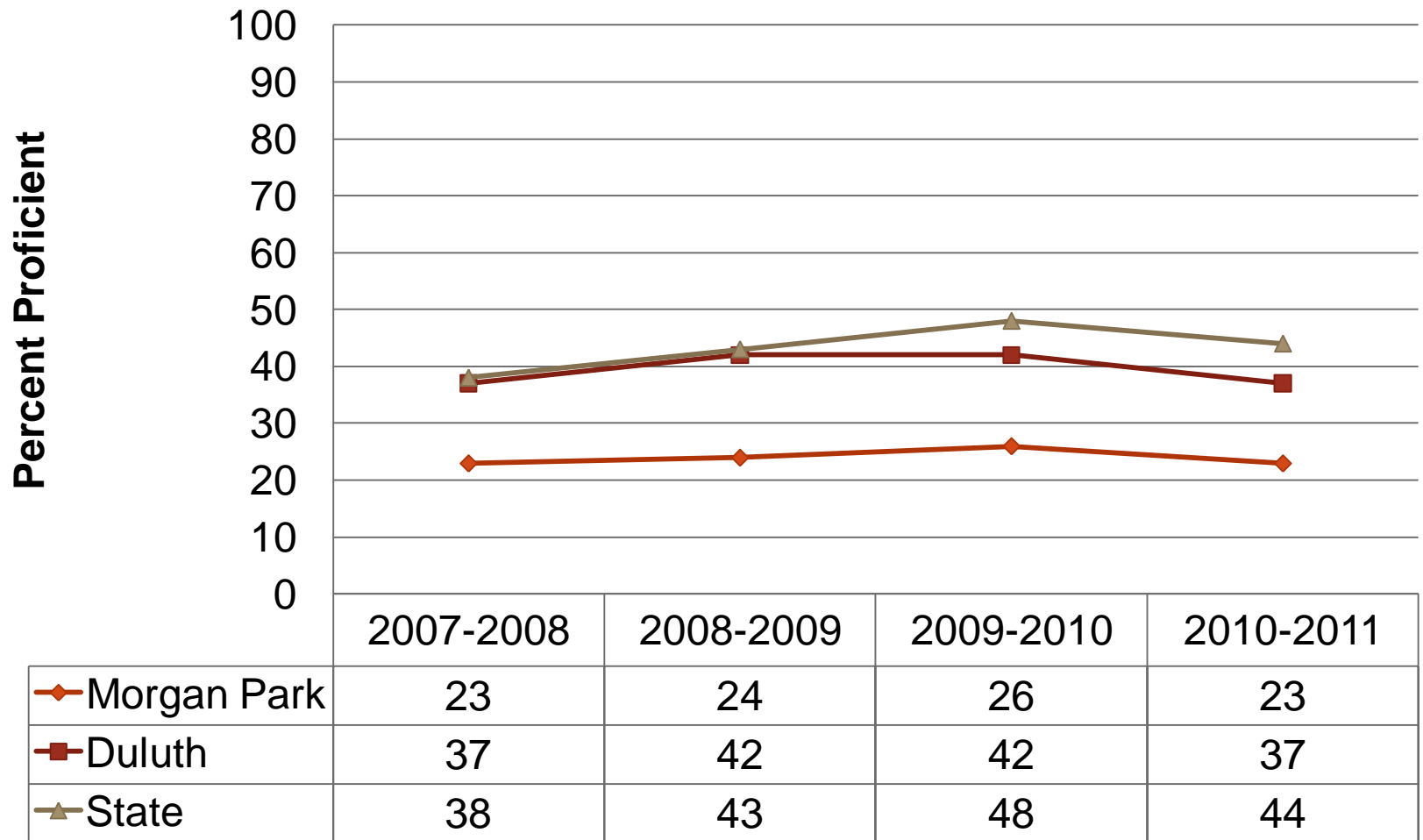
	2007-2008	2008-2009	2009-2010	2010-2011
◆ Lowell	50	44	42	43
■ Duluth	43	43	45	42
▲ State	39	45	46	46

MCA-II Science Stowe

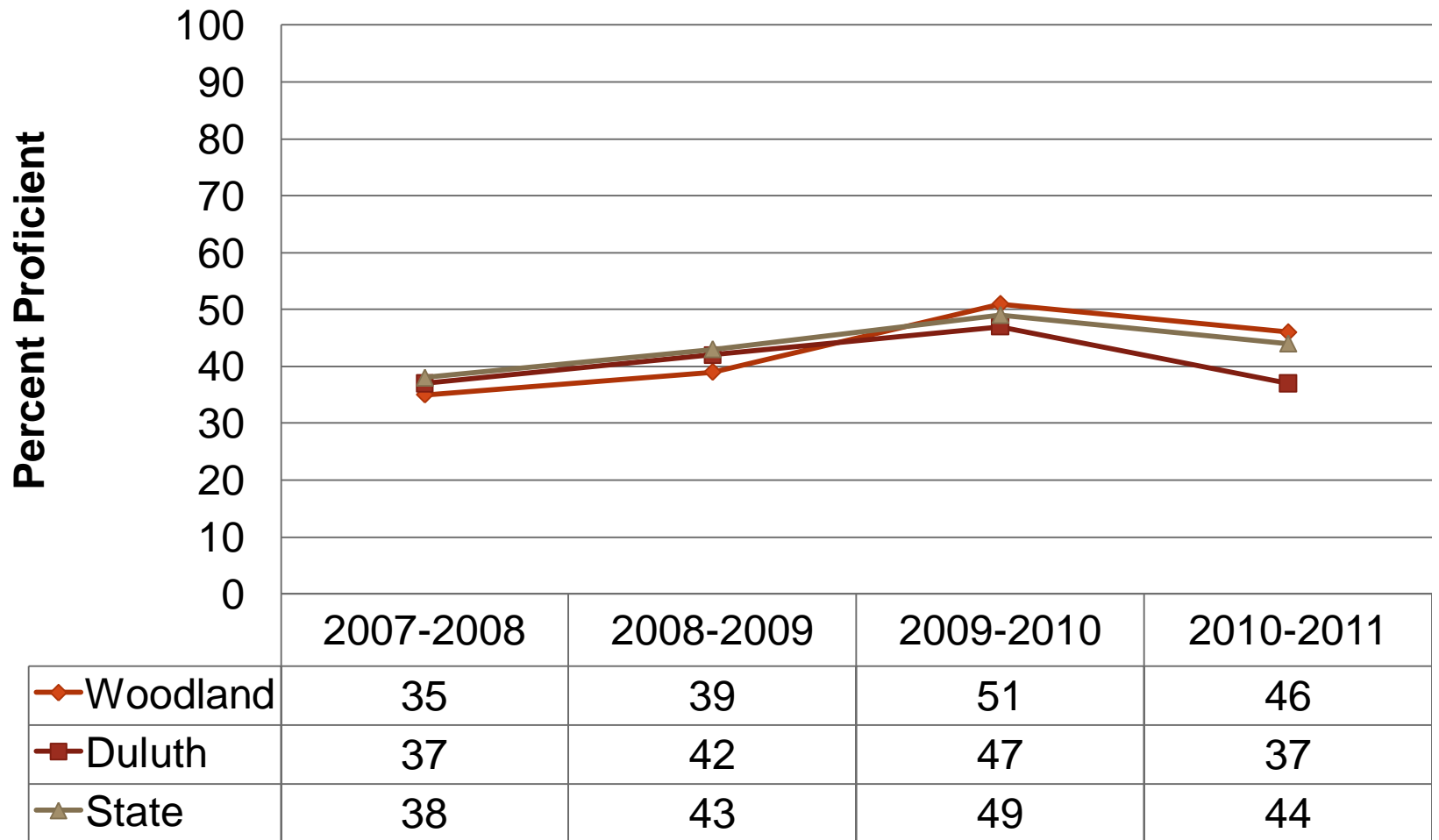


	2007-2008	2008-2009	2009-2010	2010-2011
◆ Stowe	21	33	48	29
■ Duluth	43	43	47	42
▲ State	39	45	49	46

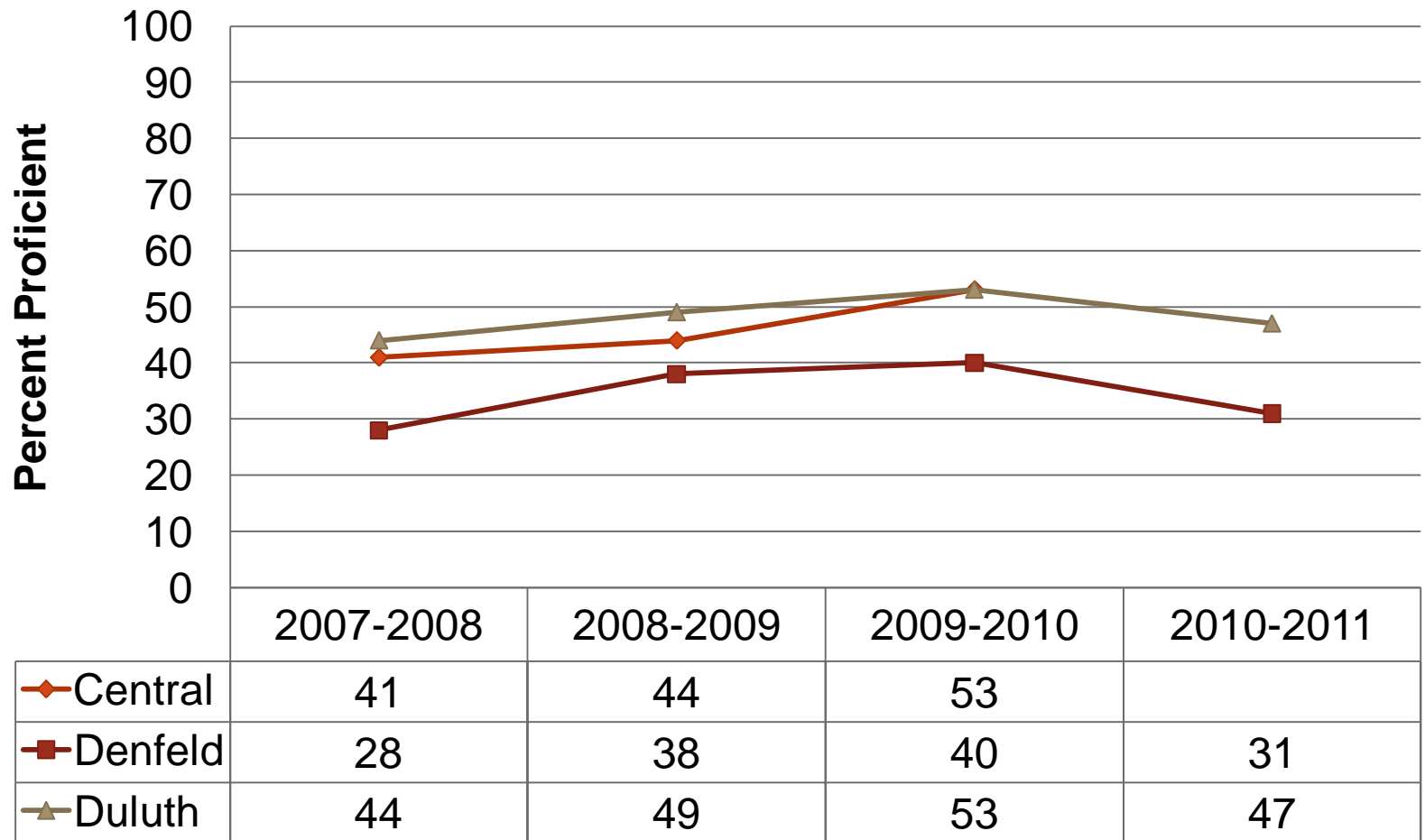
MCA-II Science Morgan Park



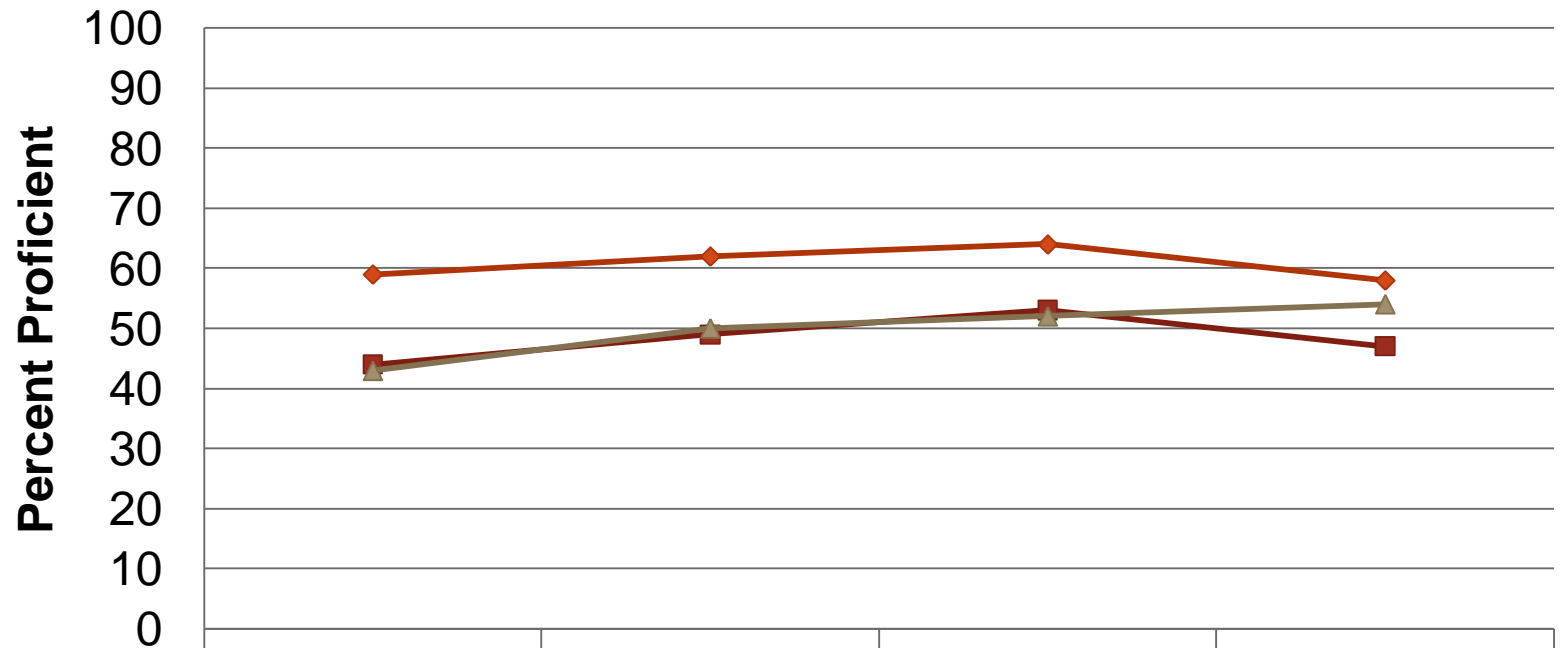
MCA-II Science Woodland



MCA-II Science Denfeld



MCA-II Science East



	2007-2008	2008-2009	2009-2010	2010-2011
◆ East	59	62	64	58
■ Duluth	44	49	53	47
▲ State	43	50	52	54