



January 13, 2023

TO: Neah-Kah-Nie District Board of Directors
FR: Dan Goldman, Superintendent of Northwest Regional Education Service District
RE: The 2023-24 Local Service Plan

Colleagues:

It's my pleasure to present the 2023-24 Local Service Plan. As your education service district partner, our goal is to promote equity in education throughout the region. Our strategic plan, created in collaboration with the school districts in our service area, outlines a shared vision that every student is educated, equipped and inspired to achieve their full potential and enrich their communities.

Toward that end, we convene educators so they can engage in professional learning, push their practice and contribute to culturally sustaining learning environments. We strengthen and align systems, like school technology infrastructure or our community preschool and child care systems. We provide access to services and resources that might otherwise be out of reach or unaffordable for many school districts.

In the pages that follow, I hope you can get a sense of our existing and potential partnership opportunities to support Neah-Kah-Nie students. Through our special educators, technology staff, early learning educators, professional learning team, and many more specialists throughout our organization, we humbly offer our services in pursuit of student success.

It's a pleasure to work alongside you and your educational staff.

In partnership,

A handwritten signature in blue ink, consisting of two large loops connected by a horizontal line.

Dan Goldman, Superintendent

Supplementary Materials: Attached to this cover letter you'll find the Proposed 2023-24 Local Service Plan; Proposed Resolution; Summary of Grant and Value-Add Services, Financial Summary Information, School District Profile of Current Services, and Presentation Deck

Proposed Motion: BE IT Resolved, the Board of Directors adopt the 2023-24 Local Service Plan as presented.

■ Clatsop County
503-325-2862
1120 Broadway
Seaside, OR 97138

■ Columbia County
503-366-4100
800 Port Avenue
St. Helens, OR 97051

■ Tillamook County
503-842-8423
2515 3rd Street
Tillamook, OR 97141

■ Washington County
503-614-1428
5825 NE Ray Circle
Hillsboro, OR 97124



2023-24 Local Service Plan

A framework for our partnership with school districts in
Clatsop, Columbia, Tillamook and Washington counties

Table of Contents

Local Service Plan

About the Local Service Plan	4
Service Area	5
Board of Directors.....	6
Key Staff Contacts	7
Timeline for Plan Development.....	8
How the Local Service Plan is Funded	9
Core Services	10
Menu Services	13
Administration.....	14
Early Learning.....	15
Instruction	16
K-12 Special Education.....	18
Technology.....	22
Student Success Act Technical Assistance Plan	24

Appendix

Proposed Resolution Authorizing NWRESD Local Service Plan for 2023-24	28
Grant Funded & Value-Add Services	29
Financial Summary Information	34
Service Credits (Detail).....	34
Core Services and County Allocations	35
Service Credits (Summary)	36
School District Profile	37
Board Presentation	39



Cover photo: NWRESD’s Early Learning Hub created [a database of free preschools](#) across Clatsop, Columbia and Tillamook counties. They coordinated photoshoots so families could preview many of the sites, including Pacific Ridge Beginning School in Seaside, pictured. Photo by Justin Grafton Studios.



About the Local Service Plan

Oregon requires its 19 education service districts to submit a local service plan each year reflecting their state-mandated mission “to assist school districts and the Department of Education in achieving Oregon’s educational goals by providing equitable, high-quality, cost-effective and locally responsive educational services at a regional level.”

The local service plan is the framework for how we serve our 20 partner school districts in Clatsop,

Columbia, Tillamook and Washington counties. According to ORS 334.175, the local service plan must address special education services, technology support, school improvement services, and administrative services.

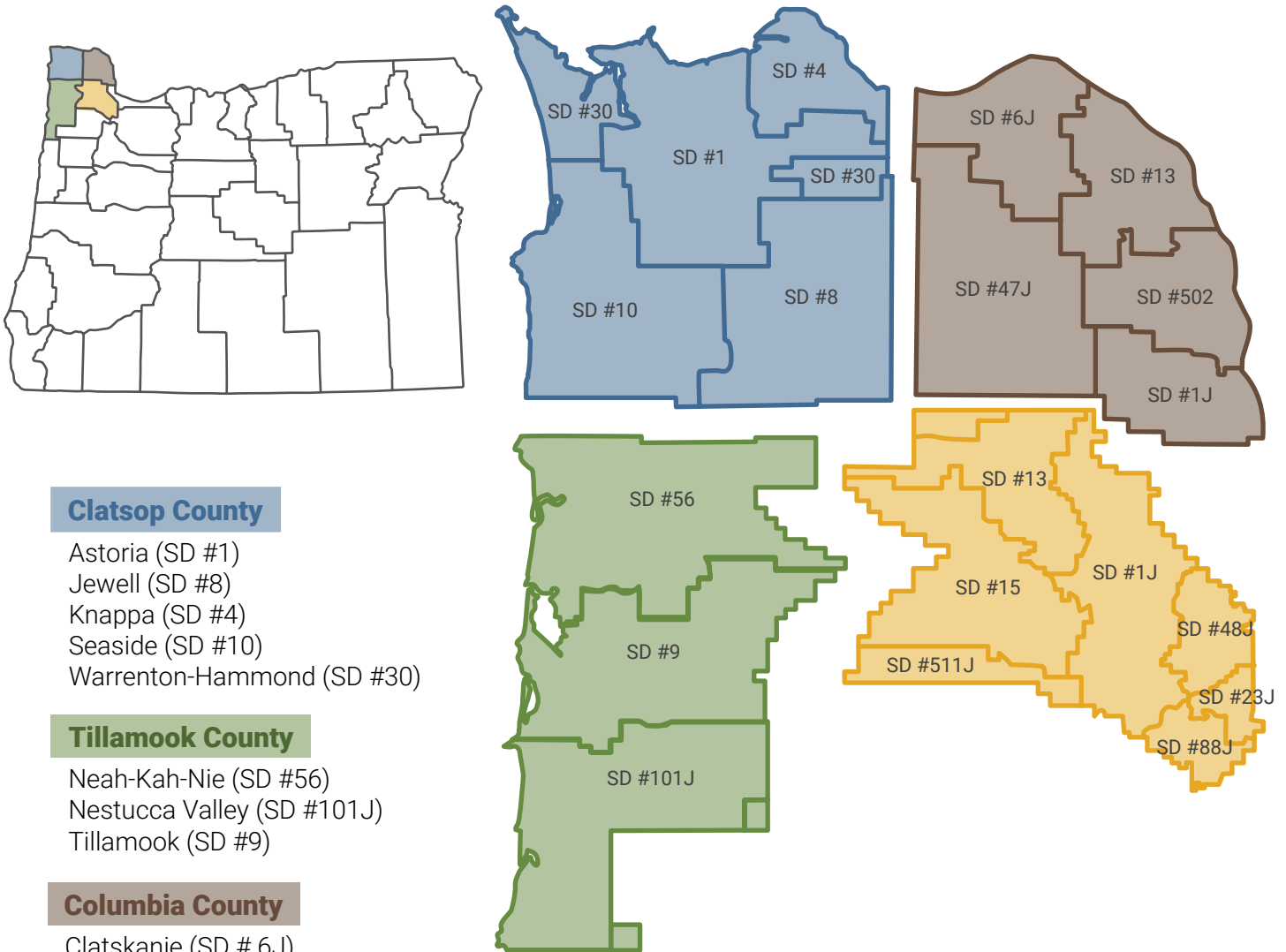
It must be approved by at least two thirds of our partner school district boards, representing at least 50% of the total number of students enrolled in our service area.



Therapy goats visit Pacific Academy, one of our social emotional learning schools. “Hosting a therapeutic goat party is one way students can both build community, expand connections with peers and engage in a unique self-regulation opportunity,” says Jillynn Garcia, mental health specialist at the school.



Service Area



Clatsop County

- Astoria (SD #1)
- Jewell (SD #8)
- Knappa (SD #4)
- Seaside (SD #10)
- Warrenton-Hammond (SD #30)

Tillamook County

- Neah-Kah-Nie (SD #56)
- Nestucca Valley (SD #101J)
- Tillamook (SD #9)

Columbia County

- Clatskanie (SD # 6J)
- Rainier (SD #13)
- Scappoose (SD # 1J)
- St. Helens (SD #502)
- Vernonia (SD #47J)

Washington County

- Banks (SD #13)
- Beaverton (SD #48J)
- Forest Grove (SD #15)
- Gaston (SD # 511J)
- Hillsboro (SD #1J)
- Sherwood (SD #88J)
- Tigard-Tualatin (SD #23J)



Board of Directors



Ross Tomlin, Chair
Higher Education Position



Doug Dougherty, Vice Chair
Zone 2: Astoria, Banks, Forest Grove, Jewell, Knappa, Neah-Kah-Nie, Nestucca Valley, Seaside, Tillamook, Warrenton-Hammond



Christine Riley
Zone 1: Gaston, Sherwood, Tigard-Tualatin



Yadira Martinez
Zone 3: Hillsboro



Tony Erickson
Zone 4: Beaverton (Beaverton and Sunset attendance areas), Clatskanie, Rainier, Scappoose, St. Helens, Vernonia



Karen Cunningham
Zone 5: Beaverton (Aloha, Southridge and Westview attendance areas)



Maureen Wolf
At-Large



Ernest Stephens
Business Position



Diane Wilkinson
Social Service Position



Key Staff Contacts



Dan Goldman
Superintendent
dgoldman@nwresd.org



Debbie Simons
Chief Human Resources
Officer
dsimons@nwresd.org



Stuart Long
Chief Information Officer
slong@nwresd.org



Sherry Ely
Interim Chief Financial
Officer
sely@nwresd.org



David Williams
Chief of Staff
dawilliams@nwresd.org



Megan McCarter
Interim Chief Academic
Officer
mmccarter@nwresd.org



Peggy Freund
Interim Early Learning
Executive Director
pfreund@nwresd.org



Cathleen Jensen
K-12 Special Education
Executive Director
cjensen@nwresd.org



Sharif Zakir Liwaru
Equity and Family
Partnerships Director
szliwaru@nwresd.org



Kelsey Cardwell
Communications Director
kcardwell@nwresd.org



Lynne Griffin
Clatsop Service Center
Administrator
lgriffin@nwresd.org



Stacy Rager
Columbia Service Center
Administrator
srager@nwresd.org

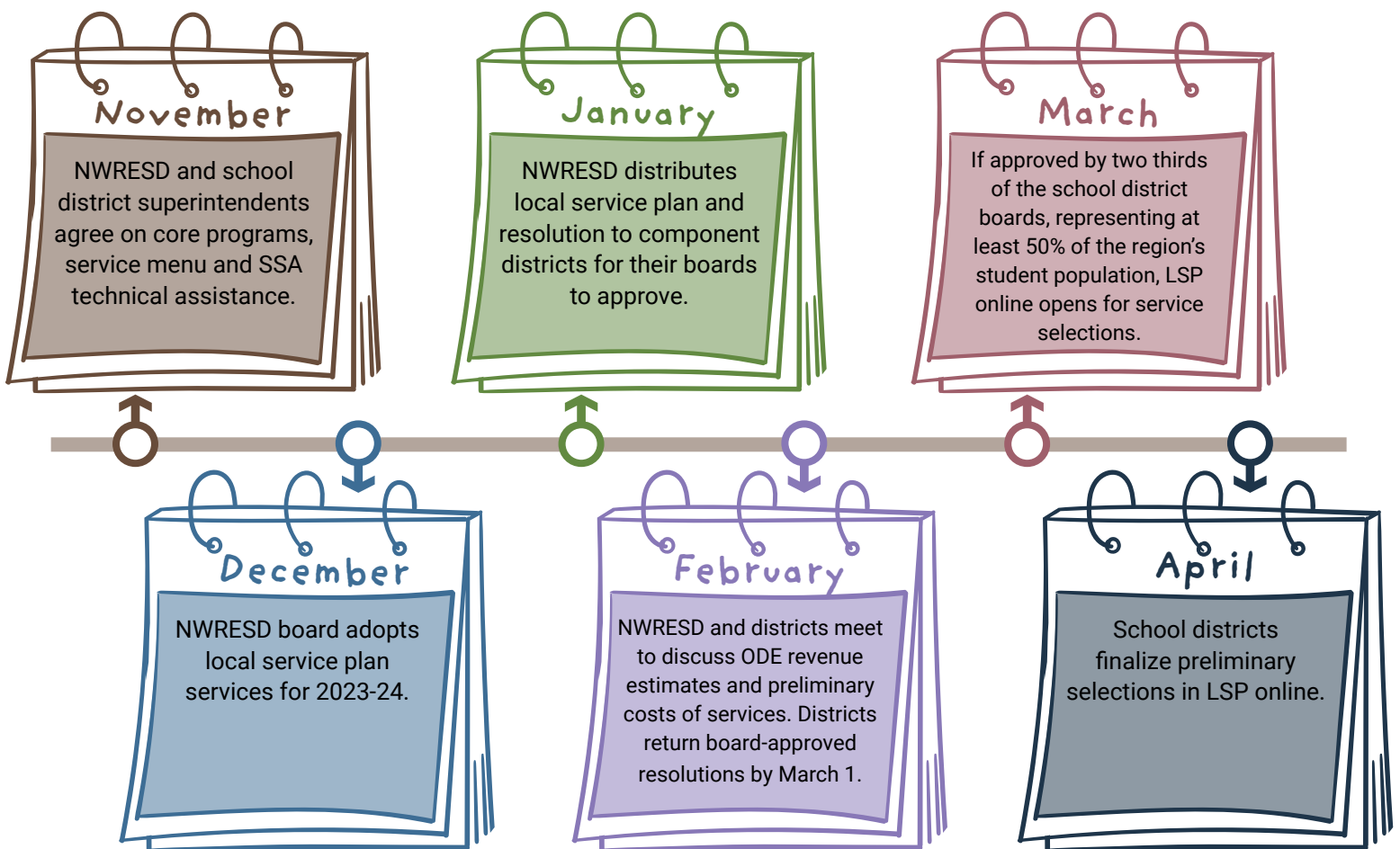


Kim Lyon
Tillamook Service Center
Administrator
klyon@nwresd.org

Timeline for Plan Development

In early fall, school districts collaborate with NWRES D to design the local service plan (LSP). The LSP is then formally approved by school district superintendents,

NWRES D's board of directors, and the 20 regional school boards, according to the timeline below. Implementation begins the following school year.



How the Local Service Plan is Funded

The State School Fund (SSF) is Oregon’s largest investment, equating to \$9.3 billion in the 2021-23 biennium. A share of 95.5% of the SSF goes directly to K-12 school districts and a share of 4.5% goes to education service districts for administering regional services.

The SSF provides 80% of general operating dollars to school districts and education service districts statewide. For NWRESD specifically, the SSF makes up 22.9% of our budget.

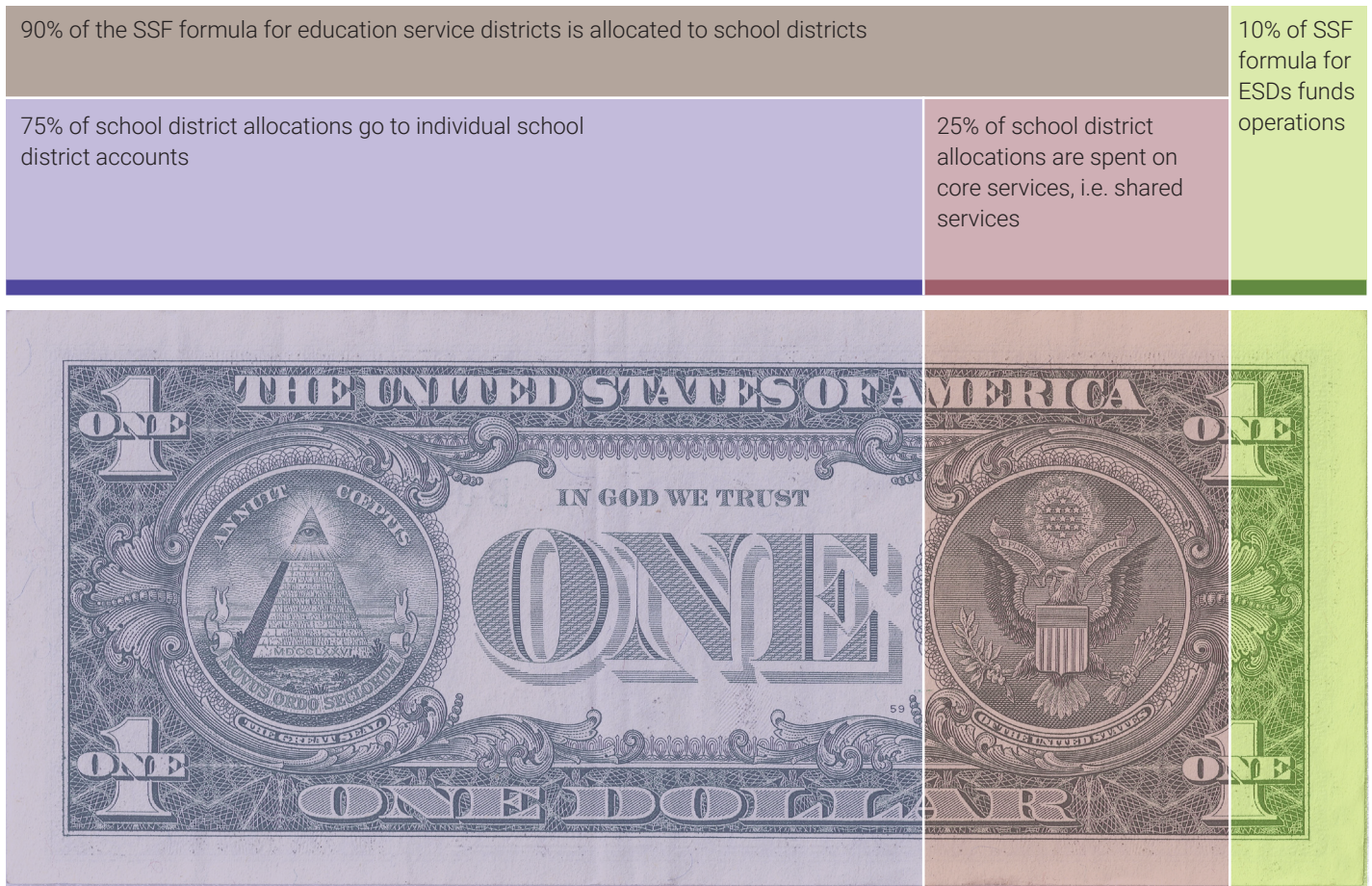
Of the SSF money we receive, 90% is allocated to districts based on weighted student population

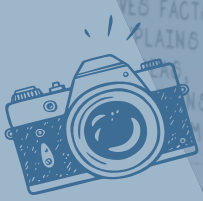
(ADMw) and 10% supports NWRESD operations.

Of the school district allocations, 75% goes directly to school district ESD accounts and 25% to core services.

School district ESD accounts can be used to purchase services through the local service plan menu. Money can also be flowed through to districts. Districts can also purchase services outside of their ESD accounts.

Core services, which are shared services available to all school districts, are first approved by component school district superintendents and then by component school district boards.





Students at Mist Elementary School in Vernonia School District write stories in Google Docs while using newly installed Starlink internet.

Core Services

Core services are first approved by component school district superintendents and then by component school district boards. These services are available to all school districts and represent 25% of the local service plan allocations for school districts.



County Allocations

Through core, each county subset of school districts receives funding to support localized priorities agreed upon by the district superintendents.

Emergency Closure Network

We provide districts with access to an emergency communication system for sharing school delays and closures with their communities and the local media.

Grant Management

We provide grant writing and management to school districts seeking competitive grants, including state, federal and private grants. Grant writers connect with school district teams to envision, plan and convey projects and match them to grant opportunities. Support includes program design and strategy, connection to potential funders, and writing, editing, and submitting grant proposals.

Regional Innovations and Professional Learning

Regional Innovations and Professional Learning are funds backed by Hillsboro and Beaverton School Districts (who are not participants in the core) that supplement several core and grant-funded services, including: 9th Grade Success Network; School Culture and Climate; Early Literacy Network; Instructional Coaching Network; Social, Emotional and Mental Health Services; grant management; Career and College Readiness; Ion MTSS; STEM Hub; and Early Learning Hub. Read more about these services in the grant and value-add services section in the appendix.

Cybersecurity Services

Cybersecurity services include advising on policy and procedure, security management of technology applications, and incident response during cyber threats and attacks.

Forecast 5

We provide Forecast 5 analytics tools to help K-12 educational leaders leverage district, demographic and peer data to develop future focused strategies for managing limited resources, achieving education outcomes and improving academic ROI in today's challenging budget environment.

Help Desk

We provide an on-demand, generalized support resource for district technology staff.

Library Services (Follett Destiny Library, Resource Manager and Textbook)

We host and support Follett's Destiny Library Management System, which provides a full service suite of school library software for managing inventory, check in/out, fees, and users. Destiny is an internet-based library, textbook and resource management system designed specifically to support K-12 education. We provide software hosting, support, student information system integration and training.

Network Security Services

A triage-based security team is available to work alongside district technology teams to analyze existing vulnerabilities, prioritize fixes, and assist with engineering support to help plan and address security vulnerabilities.

Network Services

We keep districts connected to the internet with a full suite of network management and connectivity services. We provide a sustainable model that increases speed and redundancy while maintaining low costs for school districts.



Restraint & Seclusion Application Development

The Restraint and Seclusion Application is a custom built records management system to track all school incidents resulting in physical restraint and/or seclusion. The Oregon Department of Education (ODE) requires a precise count and reporting of these incidents based on a number of student criteria. This application provides a secure and permanent history of these records, along with calculation and exportation of all pertinent data to ODE.

Technical Engineering Cooperative

Component districts participate in the Technology Engineering Cooperative, which ensures engineers are always available to keep essential systems running smoothly. This also connects your technology staff with ESD engineering teams for escalation of critical issues and serves as an additional resource in a time of crisis.



A student from the Groner Deaf and Hard of Hearing program signs with their instructor.

Menu Services

Menu services are available for individual districts to purchase as needed using service credits or other funding sources.



Administration

Communications

Districts can contract for dedicated support from a communications manager in increments of 0.25 FTE. The communications manager would work in the district to advise and execute communications strategy and serve as a public information officer. They would be a member of a larger communications team at NWRESD and have direct access to coaching, mentoring and support.

Fiscal Services

NWRESD provides school districts with a full range of fiscal services, including accounting, budgeting, payroll processing, and financial reporting.

Medicaid Reimbursements

We offer districts the opportunity to participate in school Medicaid Billing and Medicaid Administrative Claiming in Oregon. Medicaid reimburses schools for health and related services provided to Medicaid-

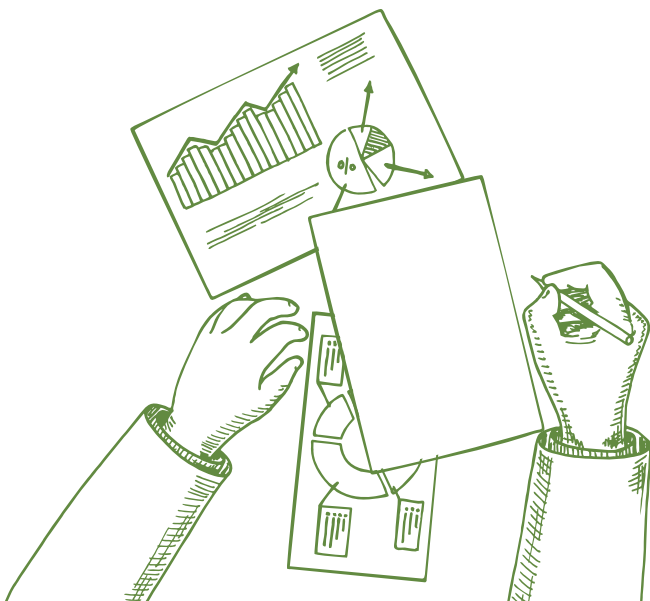
enrolled students. Schools bill for services provided through an individualized family service plan (IFSP) or individualized education plan (IEP). The Medicaid administrative claiming (MAC) program reimburses districts for administrative activities associated with coordination, referral, outreach and program planning of Medicaid-covered health services.

Spanish Language Interpretation and Translation

We offer translation (written) and virtual and in-person interpretation in Spanish to component districts. [Learn more about the pricing and services offered on our Spanish language interpretation and translation page.](#)

Substitute Services

Our human resources substitute services team manages the hiring and placement for licensed and classified substitutes for school districts in Columbia, Clatsop, Columbia, Multnomah, Tillamook and Washington counties in partnership with our districts.





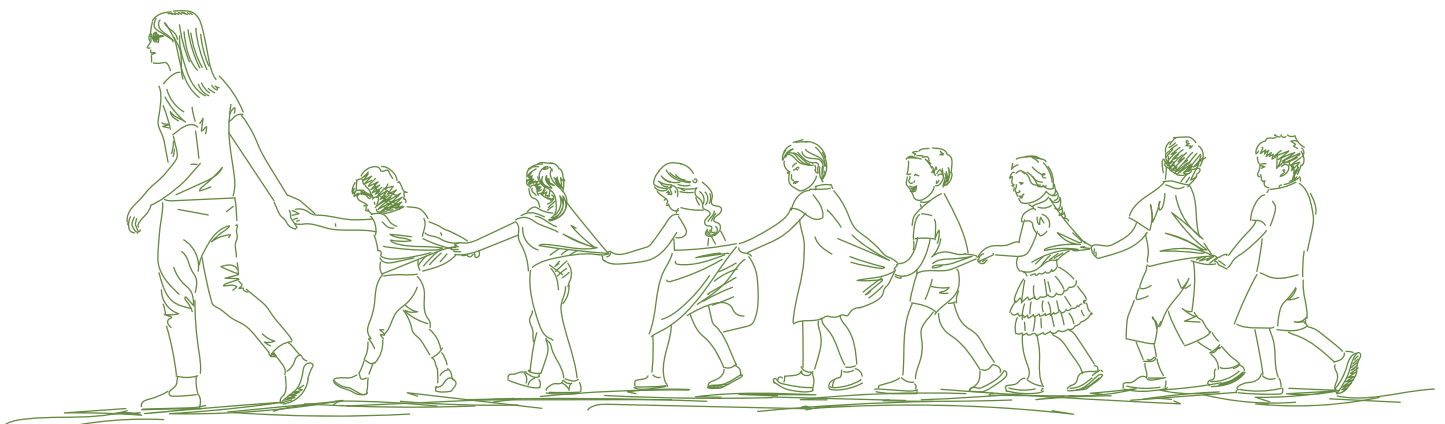
Early Learning

Early Intervention/Early Childhood Special Education (EI/ECSE) Evaluations

EI/ECSE evaluations look at a child's development and whether special education supports could build skills to further a child's individual developmental progress. Children who are found to be eligible for EI/ECSE receive free services.

EI/ECSE Transportation

In collaboration with the child's resident district, the EI/ECSE program can provide transportation to evaluations.





Instruction

Attendance Services

We partner with school district attendance teams to grow community awareness about the importance of regular attendance and to strengthen school-to-home connections. As a last resort, we also provide truancy services. Our officers take a restorative approach to their process, working with students and families to identify barriers to school attendance and strengthen communication between families and schools.

Cascade Education Corps

Cascade Education Corps is an experiential education program for Tigard-Tualatin School District students that aims to provide underserved youth with the knowledge, skills, resources and confidence to be lifelong environmental stewards. Students spend time in the field working on restoration projects.

Diverse Educator Pathways

Research shows academic and social emotional benefits for students who have access to educators who mirror their racial, cultural and linguistic identities. Yet, there is a severe shortage of linguistically and racially diverse educator talent in our state. To address this critical gap, we launched the Diverse Educator Pathways Program, partnering with Forest Grove, Hillsboro, Beaverton, Tigard-Tualatin and Sherwood school districts to develop a diverse talent pool.

Through a recent Educator Advancement Council Grow Your Own grant, we have added pilots in Gaston, Nestucca Valley, Tillamook and Neah-Kah-Nie school districts. We collaborate with schools and other partners to recruit future teachers and convene teacher candidates in a networked community. Participants agree to interview with their home district upon completion of their licensure program.

Grant Management

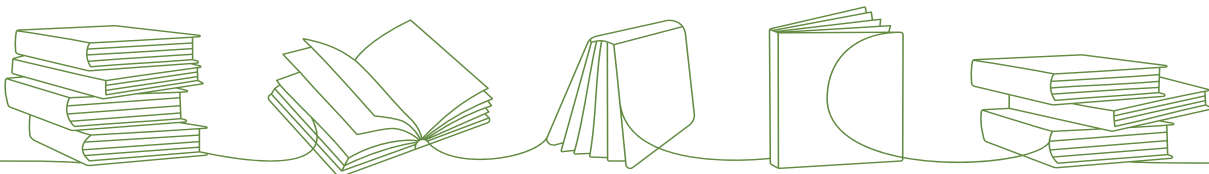
Our instructional services team provides grant writing services to school districts seeking competitive grants, including state, federal and private grants. Our grant writer partners with school district teams to envision, plan and convey projects and match them to grant opportunities.

Ion MTSS Software

We provide software and support for data-based monitoring of system-wide efforts, identifying student needs and delivering and tracking student supports.

Oregon Virtual Education (ORVED)

Oregon Virtual Education (ORVED) offers a suite of online standards-based courses taught by Oregon-certified teachers.





Reengagement Services

We employ a team of attendance advisors to work with school districts on returning as many students as possible to the classroom. The attendance team has training and is able to include all truancy requirements within their reengagement process. Acting on attendance referrals from schools, our team contacts parents and provides information on Oregon laws that require students to attend school. Approximately 70% of referrals are resolved with an initial contact, and approximately 80% are resolved without citation. Our team's focus is first on reengagement while still meeting Oregon attendance laws, as reengagement has proven much more effective than truancy citation. If attendance problems persist, a mandatory meeting is set up with parents, school staff and our team in order to problem solve and support the student and family to reengage. If absolutely necessary, our team will follow all Oregon truancy laws with documentation for districts.

Willamette Promise

In collaboration with local high schools and higher education institutions, students earn college credits while they are still in high school. We focus on cooperation between high school teachers and college faculty to ensure students are working and learning at a college level. We specifically seek to engage historically underserved students, including students of color and first-generation college goers.



K-12 Special Education

Audiology

Our audiology program supports students from birth to age 21. A licensed audiologist provides testing, consultation and workshops. Our two audiometric booths located at the Washington Service Center are used for audiological evaluations, including initial evaluations and re-evaluations to determine eligibility for deaf/hard of hearing special education services.

Autism Spectrum Disorder (ASD) Services

Our ASD team supports students who experience autism spectrum disorder and the educators who work with them. Services include evaluations; licensed special education teachers with ASD expertise; and coaching and consultation for teachers, specialists, parents and instructional assistants.

Behavioral Support Consultation

Evidence-based behavior support consultation targets a specific area of need and may include the development of a functional behavior assessment

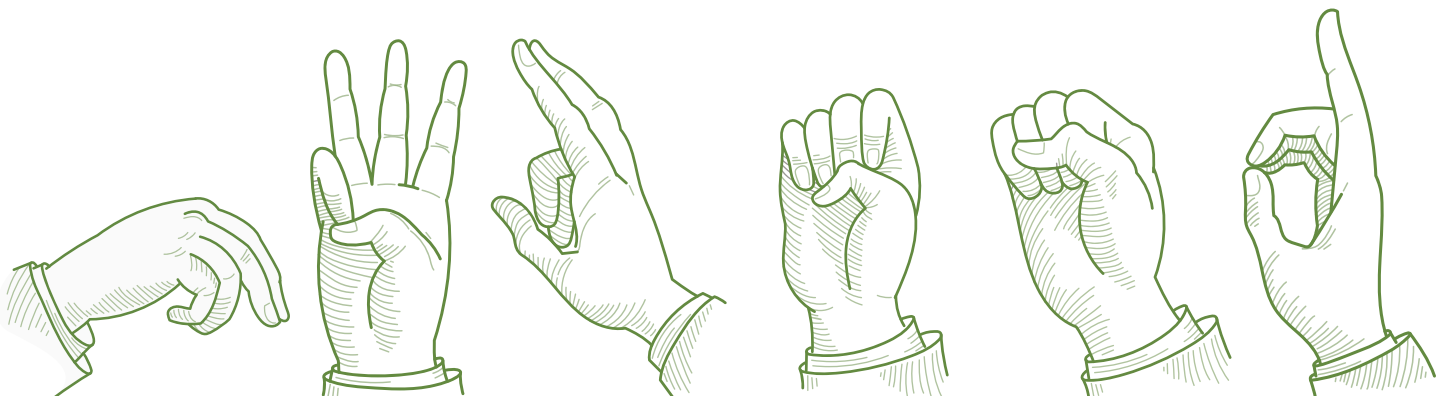
or behavior support plan, classroom and program support, coaching, data analysis, multi-tiered systems of support (MTSS) consultation, and other technical assistance.

Blind Visually Impaired (BVI) Student Services

Our BVI team serves students birth to age 21 who experience low vision, are blind or are DeafBlind. Teachers of the visually impaired provide instruction, consultation, evaluation and professional development. Orientation and mobility specialists instruct students in safe, efficient and independent travel. Our brailist provides braille services to several school districts.

Cascade Academy

Cascade Academy is an educational behavioral program located in Beaverton. It serves students in grades 9 through 12. Local district teams refer students when they need a small, supportive academic environment with a strong behavioral focus. A consulting school psychologist and district team work with a team of behavioral specialists and special





education teachers to meet students' academic, social, emotional and behavioral needs. Curriculum, instruction and assessment are linked to the Oregon State Standards and the IEP process. Students and staff participate in equity training designed to increase educational opportunities and prepare students for success in their home schools and communities.

Cascade/Pacific Intensive Classroom

In the 2022-23 school year, NWRESD expanded the Cascade and Pacific programs to include an intensive classroom for students in grades 6-10. The new classroom functions as a self-contained program within Cascade and Pacific Academy, serving students who need significant adult support to participate in an academic setting. Students have the potential to access grade-level instruction, but mental health or behavioral needs will have resulted in cumulative academic and social emotional skill deficits. Students may be far behind their peers and unable to participate in small group instruction, even at the appropriate skill-level. Targeted skills include participating in whole group instruction, maintaining emotional regulation for extended periods of time, and using appropriate communication skills in the school setting. Students typically need one-to-one support for much of the day.

Columbia K-8

The Columbia Academy K-8 program is a special education placement for students who need intensive instruction regarding emotion regulation skills in order to access their academics. Students are placed into one of three classrooms based on grade level and programming needs. Currently, two classrooms serve elementary students. Program staff are trained to provide behavioral support, collaboration and unique supervision needed for students to learn safe strategies to regulate behavior and or emotions. Explicit instruction and practice of these skills helps ready students to return to their home school district. Students access core academic instruction at their appropriate grade level and receive specially designed instruction to work toward grade-level content

standards. Students and staff participate in equity training to increase educational opportunities and prepare students for success in their home schools and communities.

Comprehensive Health Screening Age 3-6 (Tillamook County)

Comprehensive Health Screening Age 3-6:
Tillamook County.

Deaf and Hard-of-Hearing Classrooms

Our deaf and hard-of-hearing classrooms host kindergarten to sixth grade students. Learning alongside peers with similar communication modalities facilitates linguistic and social emotional development. Some children in the program use sign language as their primary mode of communication and others choose a more auditory path. Students communicate with their teacher through their primary modality and attend school with those who share their culture and communication system.

Deaf and Hard of Hearing Services

This program is part of Oregon's Regional Inclusive Services. Itinerant teachers serve students who are eligible for special education or Section 504 services. Services include consultation to educators, professional learning, and instruction – which typically includes reading, written language, self-advocacy and other areas most impacted by hearing loss. The program also provides staffing services, including American Sign Language (ASL) interpreter services, ASL teacher, and ASL assistants who work under the direction of a licensed classroom teacher.

Educational/Instructional Assistants

Instructional assistants assist teachers in all facets of daily classroom management, instruction and inclusion. Based on classroom needs, they will divide their time between working with students,



providing behavioral support and completing assigned administrative tasks. As a type of paraeducator, they work under the direction of a teacher to help students learn, make progress on their IEP goals and contribute to a safe and productive school experience. As an integral part of the educational team, instructional assistants help teachers maximize instructional time.

FM Rentals

We rent FM systems to districts for use with students who experience hearing loss and need technology to support access to their instructional program.

Learning Specialists

Learning specialists hold an Oregon license with an endorsement in the area of their assignment. Instruction will include the development of academic, social, behavioral, and workforce skills. Additional job responsibilities include case management, IEP development, assessment and data collection, scheduling meetings, parent/guardian communication, management of support staff, and collaboration with general education teachers, youth transition program (YTP) teachers, social service and business partners. The teacher works with other instructional providers to ensure equitable access to teaching and learning.

Levi Anderson Learning Center

Levi Anderson Learning Center, located at St. Mary's Home for Boys, is a day treatment program serving boys in grades 6-12. Curriculum, instruction and assessment are linked to the Oregon State Standards. Students receive mental health and behavioral supports individually and in small groups throughout the school day. Students and staff participate in equity training designed to increase educational opportunities and prepare students for success in their home schools and communities. The focus of the program builds on social emotional learning throughout the school day. Classroom staff are trained in trauma-informed care and collaborative problem solving and

coordinate with the St. Mary's behavioral support team.

Nursing Services

Our nursing team provides direct one-to-one care to students in the classroom, site-based nursing care or general nursing services in school districts. Nurses also train and consult with educators. Districts can contract with us to provide nursing services to students based on a physician's order or as designated in the individual IFSP/IEP.

Occupational Therapy (OT) Services

Our occupational therapy team assesses fine motor, visual motor, visual perceptual, motor coordination and sensory processing skills. Practitioners — occupational therapists and occupational therapy assistants — provide strategies and resources to promote independence, participation, strength, well-being and safety in the educational setting. They make adaptations to tasks and tools, model, consult, coach and teach skills. They may also facilitate assistive technology and equipment usage to remove barriers and support student success in academics, self-care and social participation.

Pacific Academy

Pacific Academy is an educational program with mental health supports located in Beaverton. It serves students grades 6-12. Local district teams refer students when they need a small, supportive academic environment with a mental health focus. A consulting school psychologist and district team work with mental health staff and special education teachers to meet the student's academic, social, emotional and behavioral needs. Curriculum, instruction and assessment are linked to the Oregon State Standards and the IEP process. Students and staff participate in equity training designed to increase educational opportunities and prepare students for success in their home schools and communities.



Physical Therapy (PT) Services

Our team provides school-age physical therapy services to address the gross motor needs of students in area school districts. Physical therapists evaluate the functional skills of students with disabilities to identify barriers to physically access and participate in school. Physical therapists consult and collaborate with the student's educational team. Physical therapists and physical therapist assistants teach strategies to classroom staff that support safe access and participation for the student in all settings throughout each school day.

Regional Equipment Center

Eligible students can access a collection of adaptive equipment and assistive technology devices. The equipment is available to students who are qualified as orthopedically, visually or hearing impaired and referred by their home district to Regional Inclusive Services. Equipment center staff consult with therapists to determine students' equipment needs.

School Psychology Services

Our psychologists provide expertise in mental health, learning and behavior to schools and their students. They support evaluations for special education eligibility, Functional Behavioral Assessments (FBA), and school law and individualized education plan (IEP) procedures. They help improve academic achievement, promote positive behavioral and mental health, establish safe school climates and strengthen family partnerships.

Social Emotional Learning Schools

We operate five specialized school programs for K-12 students with significant emotional and behavioral learning needs: Cascade Academy, Columbia Academy, Levi Anderson Learning Center, Pacific Academy. School districts or county mental health programs recommend student placements.

Speech-Language Pathology Services

Our speech-language pathology team partners with school districts and educational teams to promote language literacy, social learning and engagement. Students receive culturally and linguistically sustaining services. Our SLPs support students who exhibit the full range of communication needs, including language, literacy, articulation (speech sound disorders), fluency, voice/resonance and swallowing.

Youth Transition Program (YTP)

YTP is a collaboration between school districts and the Office of Vocational Rehabilitation to prepare students with disabilities for employment or career-related postsecondary education or training through the provision of a comprehensive array of pre-employment transition services and supports. Clatsop County school districts match grant funds to sustain the work of two transition specialists funded with this grant.



Technology

Attendance Reconnection System

Developed by the Cascade Technology Alliance, this web-based application assists schools in processing and tracking attendance issues. The software provides recording and monitoring for all required forms. It incorporates the steps necessary for districts to return as many students as possible to the classroom and contributes significantly to case resolution rates and is available to school districts, ESDs, and police departments across Oregon.

Canvas Learning Management System

We contract with Instructure to provide the Canvas Learning Management System (LMS). Canvas provides a full suite of learning management for distance learning and the classroom including a space for course content, quizzes and grades. Data and usage analytics are available.

Criminal Background Check System

We contract with Criminal Information Services, Inc. (CRIS) to provide customized, easy-to-use, online and offline criminal background information at a reduced

rate. With a per use charge, CRIS allows us to conduct background checks via web interface on volunteers, new hires, coaches, substitutes, teachers and staff. The CRIS database includes access to a nationwide database of over 1,000 registries and 300 million records on criminal activities.

District Level Technology Purchasing

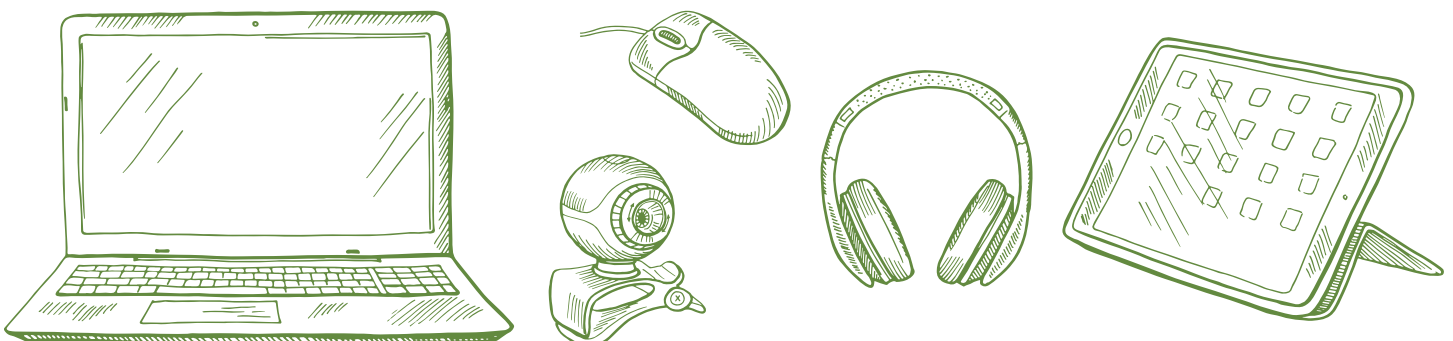
We provide purchasing assistance to component districts. Our team of trained technicians are available to purchase needed software and hardware from multiple retailers streamlining the process for clients.

Help Desk

We provide dedicated staffing at the request of districts when they have specific support needs. Our direct site support, technology planning and purchasing, engineering, and remote help desk services are tailored to each district's needs.

Learning360 Streaming Video

We contract with Infobase to provide Learn360, a





streaming digital content service for K–12 education. Teachers, students, and parents can access more than 130,000 multimedia resources on any Internet enabled device, anytime, anywhere. Does not include: Classroom Video on Demand.

Oregon Data Suite

We contract with Willamette ESD to offer the Oregon Data Suite. The suite is a collection of data services that provide educators with an accessible tool to monitor and analyze key indicators of student success. It uses a visual dashboard to transform district, building, and student data into usable information.

ORSpEd

ORSpEd is a custom built, web-based software application that serves Oregon K-12 special education needs. The system allows special education staff and administrators to access student data using a forms-based system with entry screens based on ODE forms. Reports can be configured using the data filtering tool and exported to excel for easy analysis.

Public School Works

We contract with Works International to provide Public School Works compliance training to local school districts and public entities. Public School Works is designed to ensure all employees have completed annual training requirements. The widespread use allows districts to pay a nominal fee per employee each year. The software generates email notification to employees and uses a paperless management tracking feature.

Restraint and Seclusion

The Restraint and Seclusion Application is a custom built records management system to track all school incidents resulting in physical restraint and/or seclusion. The Oregon Department of Education requires a precise count and reporting of these incidents based on a number of student criteria. This

application provides a secure and permanent history of these records, along with calculation and exportation of all pertinent data to ODE.

School ERP Pro (formerly Infinite Visions)

We contract with Tyler Technologies to host School ERP Pro, a comprehensive enterprise financial and human resources management solution specifically engineered for the K-12 business environment. Modules include general ledger, budget, accounts receivable and accounts payable, payroll, human resources, grant tracking, and inventory. The employee access web portal allows employees, administrators, and fiscal staff access to work from anywhere. Direct support from Tyler Technologies is included.

Synergy Student Information System

We offer the Synergy Student Information System (SIS), a comprehensive student information system providing single entry for student demographics, scheduling, attendance, grading, transcripts, fees, immunization, and discipline tracking. Additional Synergy applications and services are also supported, including integration with Zoom and One Roster, online registration, assessment, Inspect Item Bank, GradeCam, MTSS, analytics, SchoolPlay, special education, ParentVue and StudentVue.

Technical Engineering Cooperative

We provide technology support and technology management services that support in-district technology support needs including desktop, server and technology administration. This service dedicates support hours and scope for support based on district needs.



Rose McGee, a trainer and community engagement expert from Minnesota, leads a story circle training on Oct. 12 at the Washington Service Center in Hillsboro. NWRESA's equity and family partnerships director S.Z. Liwaru looks on. Story circles are an engagement and leadership development process in which each participant listens to and shares authentic stories.

Student Success Act Technical Assistance Plan

The Student Success Act plan, as required by HB 3427 Section 25, defines our role to support districts make progress toward the goals of the Student Success Act.



9th Grade Success Network

The purpose of the 9th Grade Success Network is to increase the number of students completing 9th grade on track to graduate within four years. On-track students are more than 3.5 times more likely to graduate from high school in four years. This network consists of more than 30 high school teams from across Clatsop, Columbia, Tillamook and Washington counties who engage in continuous improvement. Teams collectively focus on an aim statement, theory of improvement and change ideas. NWRESD's 9th Grade Success professional learning team serves as the network's hub, providing professional learning and capacity building to educators in service of student success.

Attendance Collaboratives and Professional Learning

The Attendance Network, supported through the Every Day Matters and Integrated Guidance initiatives, provides ongoing professional learning around best practice in attendance, including development of attendance teams and re-engaging students and families who have been absent from school.

Communications

Our communications team offers technical assistance, networking and support to educational staff in the region who have a community relations role. We are available to assist with: Crisis response, Student Investment Account community relations plans, translation and interpretation, including training on how to work with an interpreter, graphic design, messaging, convening and networking around regionally relevant topics.

Community Engagement and Family Partnerships

Oregon districts feature communities, families and students who have been historically and

contemporarily underserved, underrepresented, excluded or marginalized from the educational system. When we support your district through training in strengthening family partnerships, advocacy, organizing, and increasing engagement with the community, you will see focal groups that will feel less like an audience for your decisions and more involved as key partners, structures of accountability and feedback will bring a sense of transparency and authenticity to district planning.

Early Literacy Network

Our Early Literacy Network recently launched a year-long professional development opportunity for educators who work in early learning through second grade in Clatsop, Columbia, Tillamook or Washington counties. Teams meet monthly and have access to coaching and consultation, book studies, a monthly newsletter, a lending library, social emotional learning kits, and quarterly convenings. Educators who join this professional development cohort will focus on topics such as oral language and vocabulary instruction, family engagement strategies, literacy routines and culturally responsive and sustaining practices. The network has two strands. The first is for educators who work in child care, preschool or kindergarten settings. The second is for educators who work in kindergarten, first or second grades. Participants do not need to be licensed teachers to participate.

Instructional Coaching Network

The Instructional Coaching Network is a professional learning community for educators who facilitate adult learning in their school or district. By supporting instructional coaches, the network helps districts implement strategies across their system and develop their educator workforce in ways that lead to student growth. The regional approach connects coaches for job-alike collaboration and sharing of resources. Participants develop strategies to collaboratively plan with teachers, provide personalized feedback and use a continuous improvement model to establish and pursue student-focused goals.



Ion MTSS Software

We provide software and support for use in data-based monitoring of system-wide efforts, identifying student needs and delivering and tracking supports to students.

Research, Assessment and Evaluation

Our research, assessment and evaluation team furthers the ability of educators in our region to use data toward equitably improving outcomes for students by ensuring quality data, accessible data and training in data literacy. The team's current work focuses on supporting school districts with the data collection, reporting, and evaluation needs connected to their Student Success Act Plans and helping districts monitor the Academic Return On Investment (AROI) from these new state funds.

School Culture and Climate

We convene teams that are focused on creating welcoming and inclusive environments in which every student feels safe, connected, supported, valued and a sense of belonging. Using a continuous improvement process, we facilitate professional learning and coaching to help teams identify root causes of problems in their schools, seek out the voices of those most impacted, and design change ideas to test and learn from in order to improve the system. We believe in dismantling systems that perpetuate inequities so every child achieves their highest potential.

Social, Emotional and Mental Health Services

Our Social, Emotional and Mental Health team supports education professionals with the goal of improving the wellbeing of students, schools, and communities. By sharing the latest research and using best practices, we are here to coach, collaborate, and support more healthy and positive learning environments.



Appendix



Students explore a coastal Northwest Outdoor Science School site on a four-day, three-night experience for sixth graders.

Resolution Authorizing NWRESD Local Service Plan for 2023-24

BE IT RESOLVED by the Board of Directors of _____ School District in _____ County, Oregon, that for the nature and extent of Core Services, Service Credits, and the Student Success Act technical assistance plan described in the proposed local service plan and in compliance with the provisions of ORS 334.175, the school board of said school district hereby approves the Northwest Regional Education Service District Local Service Plan for the 2023-24 school year.

ADOPTED this _____ day of _____ 2023.

ATTEST:

Board Chair

Superintendent

Please email or mail the signed document by March 1, 2023 to:

Valerie White

vwhite@nwresd.k12.or.us

Northwest Regional Education Service District

5825 NE Ray Circle

Hillsboro, Oregon, 97124



Kimberlee Henderson, an instructional assistant at the Beaverton Early Childhood Center, works with a student in our Early Childhood Special Education (ECSE) program.

Grant Funded & Value-Add Services

Through support from federal, state and private grants, NWRESD provides certain services at no cost to school districts.



Attendance Services

We partner with school attendance teams to grow awareness about the importance of regular attendance and to strengthen school-to-home connections. As a last resort, we provide truancy services. Our officers take a restorative approach to their process, working with students and families to identify barriers to school attendance and strengthening communication between families and schools.

Augmentative and Alternative Communication and Assistive Technology

This team is composed of specialists in assistive technology and augmentative communication. Assistive technology encompasses technological supports and augmentative communication systems. We provide training, information, technical assistance and resources regarding the uses of technology for children with disabilities.

Blind Visually Impaired (BVI) Student Services

Our BVI team serves students birth to age 21 who experience low vision, are blind or are deafblind. Teachers of the visually impaired (TVI) provide instruction, consultation, evaluation and professional development. Orientation and mobility (O&M) specialists instruct students in safe, efficient and independent travel. Our brailist provides braille services to several school districts.

Blind Visually Impaired Student Fund

This fund was established in 2009 by the Oregon State Legislature to help students transition to educational programs in their neighborhood schools when Oregon's School for the Blind closed. The fund's purpose has since expanded to enhance learning for

all students in the state who experience blindness or visual impairment.

Cascade Alliance for Equity (CAFE)

CAFE is a partnership between Clackamas, Multnomah and Northwest Regional education service districts. The mission is to leverage the collective work of educators and community partners across the region to foster culturally sustaining practices that result in equitable opportunities and improved outcomes for all Oregon students.

Child Care Resource and Referral (CCR&R)

Northwest CCR&R supports child care providers in Clatsop, Columbia and Tillamook counties through training, career advancement opportunities, licensing and other forms of support. The team also advances child care sector planning for the region.

Courier

NWRESD's courier delivers educational materials, technology and other materials between all school districts and NWRESD sites. [The courier schedule is posted to nwresd.org.](https://www.nwresd.org/courier-schedule)

Deaf and Hard-of-Hearing Services

This program is part of Oregon's Regional Inclusive Services. Itinerant teachers serve students who are eligible for special education or Section 504 services. Services include consultation to educators, professional learning, and instruction – which typically includes reading, written language, self-advocacy and other areas most impacted by hearing loss. The program also provides staffing services, including American Sign Language (ASL) interpreter services, ASL teachers, and ASL assistants who work under the direction of a licensed classroom teacher.



Diverse Educator Pathways

Research shows academic and social emotional benefits for students who have access to educators who mirror their racial, cultural and linguistic identities. Yet, there is a severe shortage of linguistically and racially diverse educator talent in our state. To address this critical gap, we launched the Diverse Educator Pathways Program, partnering with Forest Grove, Hillsboro, Beaverton, Tigard-Tualatin and Sherwood school districts to develop a diverse talent pool. Through a recent Educator Advancement Council Grow Your Own grant, we have added pilots in Gaston, Nestucca Valley, Tillamook and Neah-Kah-Nie school districts. We collaborate with schools and other partners to recruit future teachers and convene teacher candidates in a networked community. Participants agree to interview with their home district upon successful completion of their licensure program.

Early Childhood Special Education (ECSE)

Early Childhood Special Education (ECSE) offers special education services to children found eligible through our screening and evaluations process. Services include specially designed instruction and related services such as physical, occupational, or speech and language therapy. Most of these services are offered in partnership with school districts, community and Head Start preschools, and other child care facilities. When needed, services are offered in specialized settings.

Early Intervention

Our Early Intervention (EI) program supports eligible children from birth to age 3 years. The program helps families develop the skills they need to help their children learn and grow. Services are delivered through a parent coaching model at home or in other care-giving settings.

Early Intervention/Early Childhood Special Education (EI/ECSE) Intake and Screening

Screenings are completed at no cost for children ages birth to five. The EI/ECSE intake and screening process determines if a child needs to be evaluated to determine EI/ECSE eligibility. Evaluations, which are available as a contracted service, look at a child's development and whether special education supports could build skills to further a child's individual developmental progress.

Early Learning Hub

The Northwest Early Learning Hub convenes cross-sector partners — educators, health care providers, community advocates, businesses and others — to create local systems that are aligned, coordinated and family-centered. Families in Clatsop, Columbia and Tillamook counties receive support to become healthy, stable and attached and their children receive the early learning experiences they need to thrive.

English Language Learner Consortium (Title III)

This consortium ensures English learners, including immigrant children and youth, attain English proficiency and achieve academically in English and all other subjects. We assist teachers, including preschool teachers, principals and other school leaders in establishing and sustaining effective language education programs so that students are ready to attend classes in English.

Instructional Technology Professional Learning

NWRESD's technology team hosts workshops and training opportunities for educators who want to learn more about educational technology tools.



Opportunities are posted to nwresd.org on the technology page.

Migrant Education Program (MEP)

MEP ensures children whose families migrate for work in the agricultural, fishing, timber and other similar industries can fully benefit from public education. The program focuses on family partnership, kindergarten preparation, student empowerment and high school completion.

Northwest Outdoor Science School

Northwest Outdoor Science School is a four-day, three-night experience for sixth grade students. In an immersive experience, students learn about the natural world at one of our five sites in northwest Oregon. Each site's 12 to 13 staff members are supported by high school volunteers.

Northwest Parenting

Northwest Parenting is a regional collaborative that delivers parenting education programs, educational workshops, family engagement opportunities and support for school success to families in Clatsop, Columbia and Tillamook counties.

Northwest Regional Educator Network

The Northwest Regional Educator Network (REN) is one of 10 networks across Oregon tasked with determining how to spend local grant funds to best ensure students have access to high-quality educators. The Northwest REN encompasses Columbia, Clatsop, Tillamook and Washington counties and is responsible for disseminating \$2.5 million per year in state funds (funding rates are for the 2019-21 biennium).

Nursing Services

Our nursing team provides staff and expertise. Services include direct one-to-one care to students in the classroom, site-based nursing care or general nursing services in school districts. Nurses also train and consult with educators. Districts can contract with NWRESD to provide nursing services to students based on a physician's order and/or as designated in the individual IFSP/IEP.

Oregon Response to Instruction & Intervention (ORTIi)

The purpose of Oregon Response to Instruction and Intervention is to provide technical assistance to Oregon school districts implementing Response to Intervention (RTI) systems that provide targeted, effective instruction to meet the needs of all students and provide the framework to identify students with Specific Learning Disabilities (SLD). The focus of the project is on literacy, early intervention, and the use of evidenced-based practices. ORTIi has been supported by the Oregon Department of Education since 2006.

Regional Equipment Center

The equipment center is a collection of adaptive equipment available for eligible student use and assistive technology devices available for trial/assessment. The equipment is available to students who are qualified as orthopedically, visually or hearing impaired and referred by their home district for Regional Inclusive Services. Equipment center staff consult with therapists to determine students' equipment needs.

Regional Inclusive Services

Oregon's 11,000+ students who experience visual impairment, orthopedic impairment, deafness or



hard of hearing, deaf-blindness, traumatic brain injury and/or autism spectrum disorder need an appropriate and accessible education in their home district. Regional Inclusive Services provides training, technical tools, and additional support to educators so that all schools, no matter their size or location, can deliver an inclusive education. Regional Inclusive Services recently changed its name from Regional Programs to more specifically and accurately describe its function. Inclusive practices ensure that students with disabilities have opportunities to learn alongside their nondisabled peers in their neighborhood schools and communities. The statewide program consists of the Oregon Department of Education and several education service districts, school districts and other community agencies who work in partnership to ensure educators and schools across Oregon are equipped with the tools, skills and resources to deliver an accessible education for all children.

School Safety and Prevention System

The School Safety and Prevention System (SSPS) was established through Section 36 of the Student Success Act and Senate Bill 52 (Adi's Act). This new statewide system is centered on equity, racial equity and access to mental health services. This system provides an integrative approach for aligning school safety, public education and health systems.

STEM (Science, Technology, Engineering, Math) Hub

Northwest STEM Hub supports Clatsop, Columbia and Tillamook counties. We work to: identify community needs and assets; convene families, educators, higher education, community-based organizations and industry to promote STEM experiences; strategize to fill STEM learning gaps; build shared social and economic prosperity through STEM access, interest and skills attainment, especially for those furthest from opportunity.

Traumatic Brain Injury (TBI) Services

Our TBI liaison connects educators, families and students to resources both within our region and throughout the state. The TBI liaison also works closely with members of the statewide TBI team, which includes professionals throughout our region who have volunteered to complete professional learning activities needed to provide consultation within their school district.

Youth Transition Program (YTP)

YTP is a collaboration between school districts and the Office of Vocational Rehabilitation to prepare students with disabilities for employment or career-related postsecondary education or training through the provision of a comprehensive array of pre-employment transition services and supports. Clatsop County school districts match grant funds to sustain the work of two transition specialists funded with this grant.



Financial Summary Information

Service Credit Allocations

	ADMw 2021 Estimate	ADMw(e) 5/19/22 ODE estimate	ADM % to total	ADM % to total for service and core credits	2023-24 at \$9.5 B	2022-23 LSP allocations	2023-24 variance to 2022-23 LSP allocations
--	--------------------	------------------------------	----------------	---	--------------------	-------------------------	---

Clatsop County School Districts

Astoria	2,205.66	2,072.02	1.77%	4.36%	\$652,056	\$611,356	\$40,700
Jewell	302.9	294.05	0.25%	0.62%	\$92,536	\$86,351	\$6,185
Knappa	667.96	634.93	0.54%	1.34%	\$199,810	\$185,439	\$14,371
Seaside	1,980.96	1,897.93	1.62%	4.00%	\$597,270	\$550,358	\$46,912
Warrenton-Hammond	1,255.65	1,230.89	1.05%	2.59%	\$387,356	\$344,766	\$42,590

Columbia County School Districts

Clatskanie	946.71	956.46	0.82%	2.01%	\$300,994	\$262,256	\$38,738
Rainier	1,073.02	1,064.59	0.91%	2.24%	\$335,022	\$292,989	\$42,033
Scappoose	2,798.35	2,538.68	2.16%	5.35%	\$798,911	\$715,515	\$83,396
St. Helens	3,348.35	3,242.72	2.77%	6.83%	\$1,020,470	\$933,542	\$86,928
Vernonia	781.80	780.22	0.67%	1.64%	\$245,532	\$230,759	\$14,773

Tillamook County School Districts

Neah-Kah-Nie	1,035.54	919.54	0.78%	1.94%	\$289,375	\$288,768	\$607
Nestucca Valley	684.65	712.38	0.61%	1.50%	\$224,183	\$192,335	\$31,848
Tillamook	2,691.98	2,547.71	2.17%	5.37%	\$801,753	\$771,605	\$30,148

Washington County School Districts

Banks	1,296.43	1,185.90	1.01%	2.50%	\$373,198	\$365,479	\$7,719
Beaverton		46,236.35	39.43%				
Forest Grove	7,502.83	7,220.61	6.16%	15.21%	\$2,272,294	\$2,089,705	\$182,589
Gaston	748.12	665.74	0.57%	1.40%	\$209,505	\$207,361	\$2,144
Hillsboro		23,543.45	20.08%				
Sherwood	5,991.30	5,540.12	4.72%	11.67%	\$1,743,452	\$1,660,645	\$82,807
Tigard-Tualatin	14,699.28	13,976.92	11.92%	29.44%	\$4,398,476	\$4,056,819	\$341,657

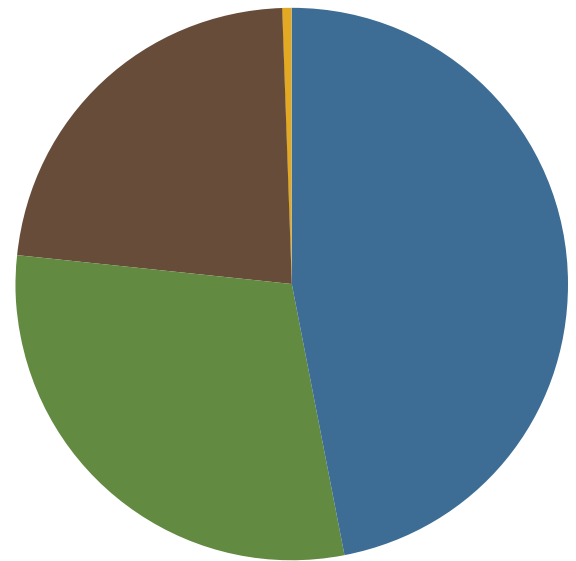
2023-24 Estimates

Core Services

These estimates are based on a \$9.5 billion State School Fund. Estimates for Beaverton and Hillsboro are based on a 3% rollup.

Core Services: \$4,965,969

- Technology: \$2,827,785
- County Allocations: \$1,791,099
- Instruction: \$1,377,428
- Miscellaneous: \$26,546



Beaverton and Hillsboro School Districts:

- Regional Innovations: \$666,326
- Professional Development: \$370,743



Total Core Services: \$6,003,037

County Allocations



Clatsop County

\$291,680



Columbia County

\$358,377



Tillamook County

\$238,651



Washington County

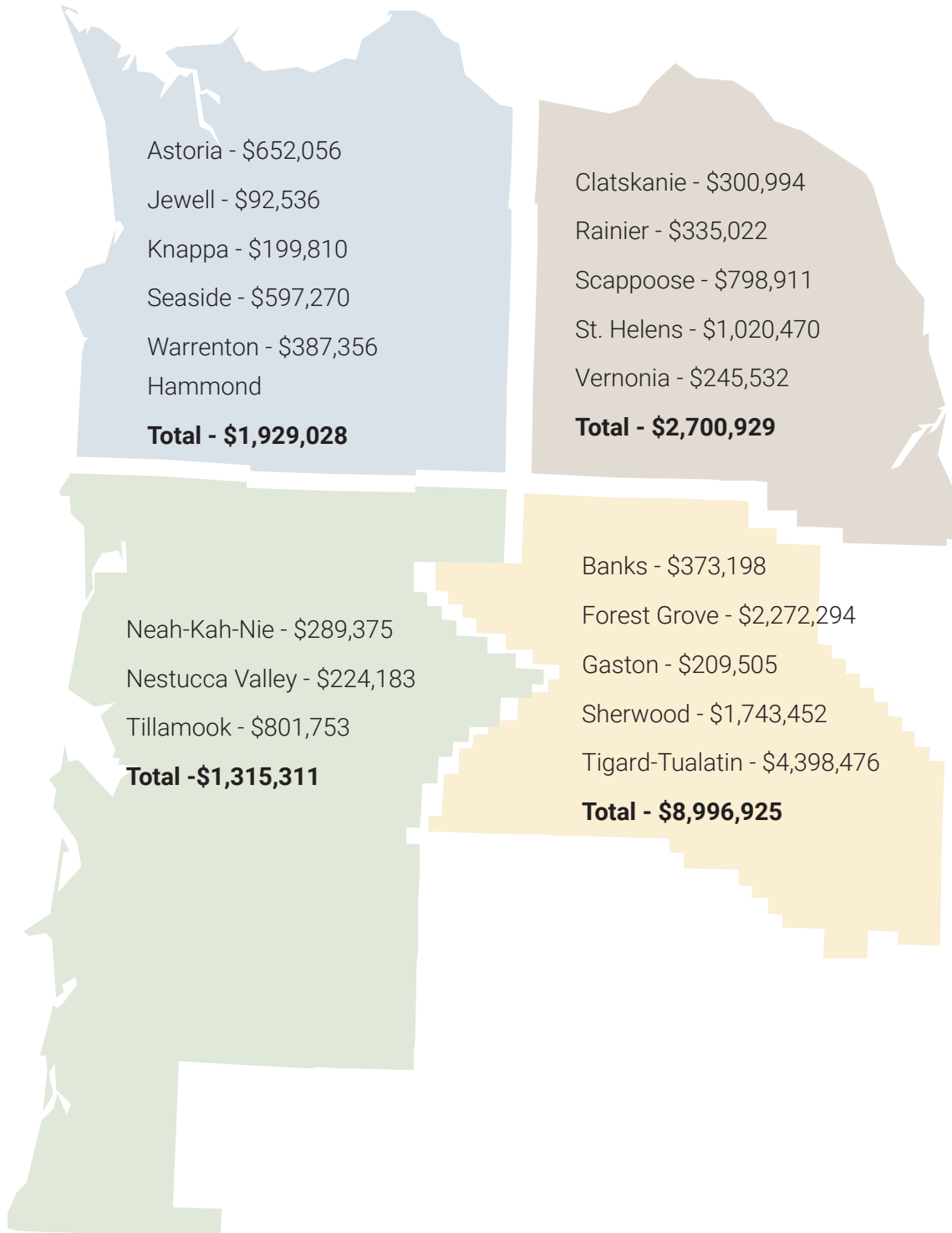
\$902,391



2023-24 Estimates

Service Credits

These estimates are based on a \$9.5 billion State School Fund.



Neah-Kah-Nie School District Profile

Superintendent: Paul Erlebach

Population (2021-22): 691 students • 48 teachers

Schools: Nehalem Elementary School • Garibaldi Grade School • Neah-Kah-Nie Middle School • Neah-Kah-Nie High School



NWRESD's Early Learning Hub created a [database of free preschools in Tillamook County](#). They coordinated photoshoots with Justin Grafton Studios so families could preview sites.

Service Highlights

Through the local service plan and grant-funded services, NWRESD partners with school districts in dozens of ways. This summary sheet provides a few of the highlights from our partnership with Neah-Kah-Nie schools.

Early Learning



18 babies and young children enrolled in Early Intervention/Early Childhood Special Education (EI/ECSE) (Nov. 2022)



18 babies and young children evaluated for eligibility to receive EI/ECSE services (July 2021 to June 2022)

Instructional Services



2 high school student leaders supported Outdoor School (Fall 2022)



\$175,322 in grants awarded through a combination of regional grants and a \$125,000 district-specific grant for CTE revitalization from the Oregon Department of Education (2021-22)

PROGRAM PARTICIPATION:

- 9th Grade Success Network
- Attendance Collaborative
- Diverse Educator Pathways
- Early Literacy Network
- English Language Learner Consortium
- Instructional Coaching Network
- Migrant Education Program
- Multi-Tiered System of Supports
- School Culture and Climate
- School Safety and Prevention
- Social, Emotional, and Mental Health Network
- STEM Hub

K-12 Special Education



special education staff support the district in specialty areas that include augmentative communication, assistive technology, autism, audiology, occupational therapy, physical therapy, school psychology, speech-language pathology, and visual and hearing impairment (as of November 2022).

Technology

SERVICE USAGE:

- Criminal Background Check System
- Follett Destiny Library & Resource Manager
- Forecast 5
- Home School Application
- iVisions
- Network Services
- Online Learning: ORVED
- Oregon Data Suite
- ORSpEd Application
- Public School Works
- Restraint and Seclusion Application
- Security: Tech. Management, Incident Response
- Synergy Student Information System
- Technology Support Cooperative
- Technology Support Site Support
- Truancy Application

Story time!



Tracy Bennett, a literacy coach at Neah-Kah-Nie School District, joined our Early Literacy Network in 2021-22 and continued into the 2022-23 school year. She says the network has been a phenomenal resource, especially coming out of the pandemic. This year, she's fine tuning the literacy-related components of a new curriculum the district is piloting. She's also closing the gap between where students are and where they should be. She shared:

"I'm looking for examples of what the best practices are and how much time needs to be devoted to each topic to make sure those gaps don't exist anymore."

Read the full story: [Early Literacy Network: How We're Tackling the Literacy Gap](#)

MORE STORIES:

- [Early Learning Hub Connects Families to Free Preschool](#)
- [Manufacturing Day Draws More Than 280 Students](#)
- [NKNSD Superintendent Paul Erlebach Remembers NWRES D Grant Writer Crystal Greene](#)



(503) 614-1428



NWRES D.ORG



COMMUNICATIONS@NWRES D.K12.OR.US



2023-24 Local Service Plan

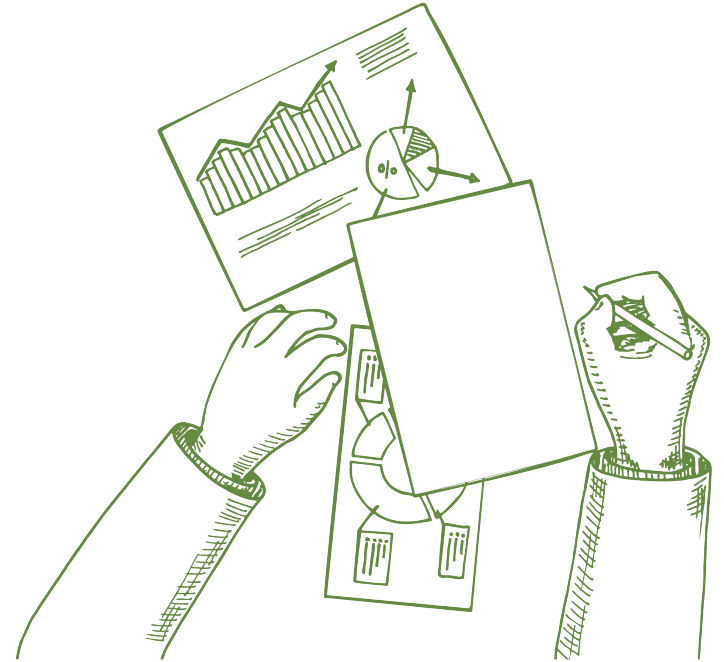
A framework for our partnership with school districts in Clatsop, Columbia, Tillamook and Washington counties

School Board Role

ORS 334.175

Each year an Education Service District's Local Service Plan must be:

1. adopted by the board of the education service district
2. approved on or before March 1 by resolution of two-thirds of the component school districts that have at least a majority of the pupils



Navigating the Local Service Plan Document

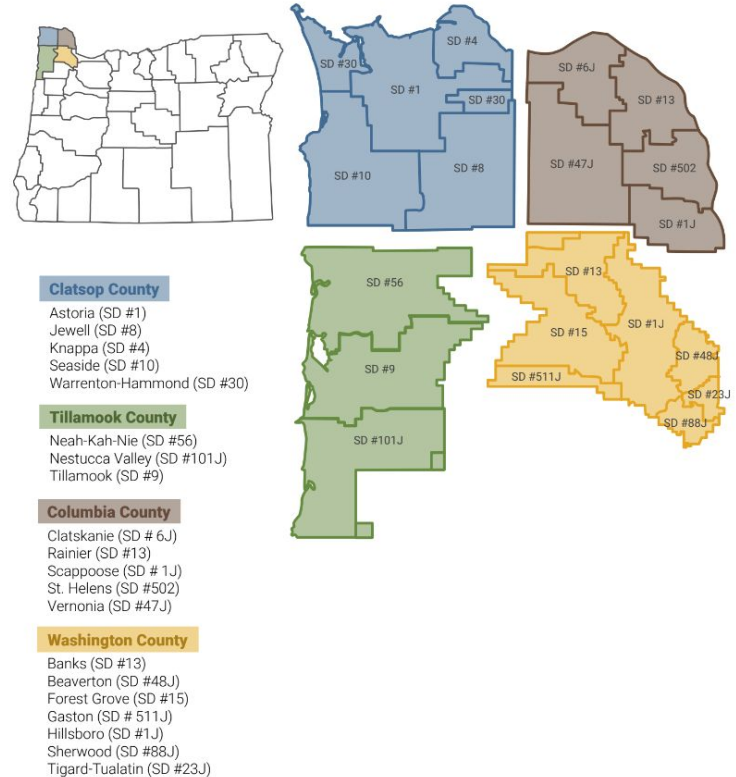
- P. 10 - List of core services
- P. 13 - List of menu services
- P. 24. - SSA technical assist. plan
- P. 28 - Board resolution/action
- P. 29 - Grant and value-add services
- P. 34 - LSP financial summary
- P. 37 - Summary of current services your district is receiving



About Northwest Regional Education Service District

- Largest of Oregon's 19 education service districts
- \$71,683,364 in annual grant revenue
- Vision: Every student educated, equipped and inspired to achieve their full potential and enrich their communities.

Service Area



Ways We're Working Together to Support Neah-Kah-Nie Kids (P. 37)

- **Administration**
- **Early Learning:** 18 EI/ECSE evals, 18 enrolled in EI/ECSE, EL Hub, etc.
- **Instruction:** grant writing (e.g. \$125k CTE revitalization), professional learning, migrant education program, ELL consortium, STEM Hub, etc.
- **Special education:** 11 specialists support the district, e.g. occupational therapy, audiology, school psychology, etc.
- **Technology:** Support, apps, security, etc.

Northwest Regional Education Service District

Neah-Kah-Nie School District Profile

Superintendent: Paul Erlebach
Population (2021-22): 691 students • 48 teachers
Schools: Nehalem Elementary School • Garibaldi Grade School • Neah-Kah-Nie Middle School • Neah-Kah-Nie High School

NWRESD's Early Learning Hub created a database of free preschools in Tillamook County. They coordinated photoshoots with Justin Crafton Studios so families could preview sites.

Service Highlights

Through the local service plan and grant-funded services, NWRESD partners with school districts in dozens of ways. This summary sheet provides a few of the highlights from our partnership with Neah-Kah-Nie schools.

Early Learning

- 18 babies and young children enrolled in Early Intervention/Early Childhood Special Education (EI/ECSE) (Nov. 2022)
- 18 babies and young children evaluated for eligibility to receive EI/ECSE services (July 2021 to June 2022)

Instructional Services

- 2 high school student leaders supported Outdoor School (Fall 2022)
- \$175,322 in grants awarded through a combination of regional grants and a \$125,000 district-specific grant for CTE revitalization from the Oregon Department of Education (2021-22)

PROGRAM PARTICIPATION:

- 9th Grade Success Network
- Attendance Collaborative
- Diverse Educator Pathways
- Early Literacy Network
- English Language Learner Consortium
- Instructional Coaching Network
- Migrant Education Program
- Multi-Tiered System of Supports
- School Culture and Climate
- School Safety and Prevention
- Social, Emotional, and Mental Health Network
- STEM Hub



About the 2023-24 Local Service Plan

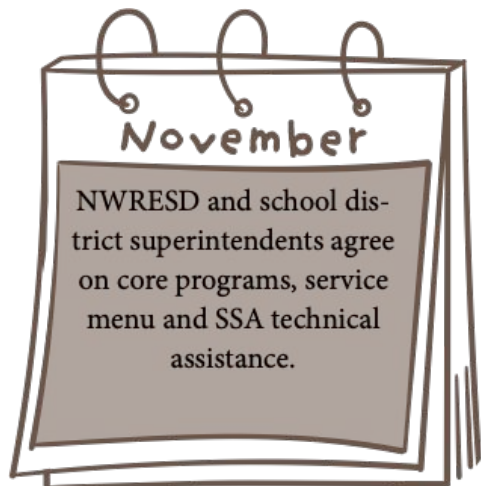
90% of the SSF formula for education service districts is allocated to school districts

10% of SSF formula for ESDs funds operations

75% of school district allocations go to individual school district accounts

25% of school district allocations are spent on core services, i.e. shared services





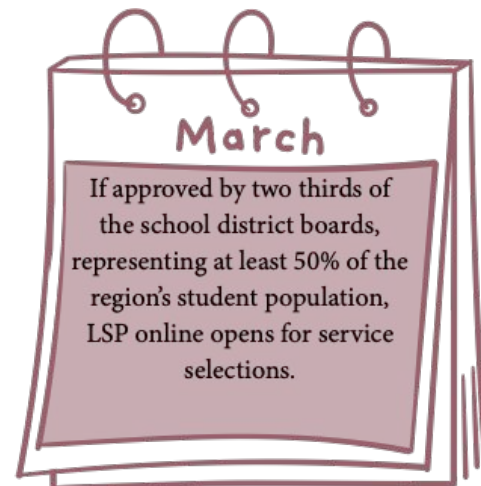
November

NWRESD and school district superintendents agree on core programs, service menu and SSA technical assistance.



January

NWRESD distributes local service plan and resolution to component districts for their boards to approve.



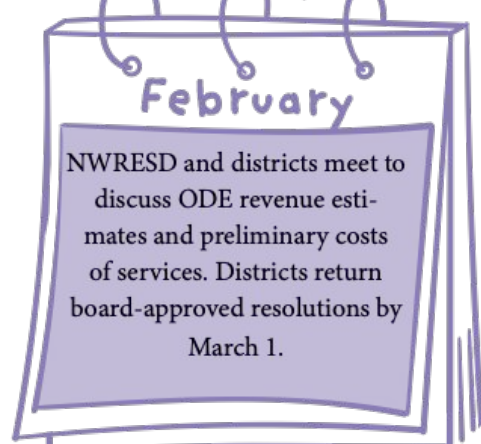
March

If approved by two thirds of the school district boards, representing at least 50% of the region's student population, LSP online opens for service selections.



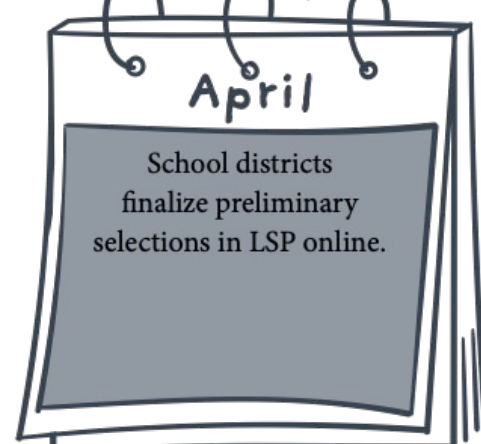
December

NWRESD board adopts local service plan services for 2023-24.



February

NWRESD and districts meet to discuss ODE revenue estimates and preliminary costs of services. Districts return board-approved resolutions by March 1.



April

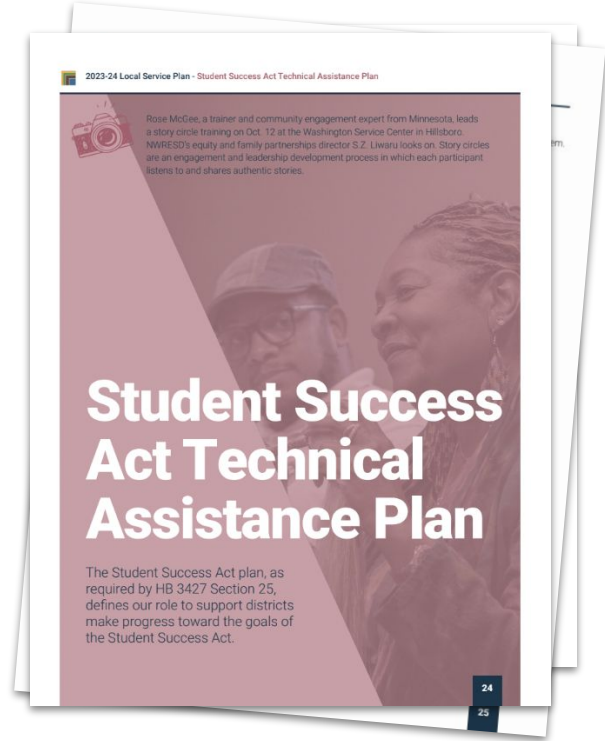
School districts finalize preliminary selections in LSP online.



P. 10



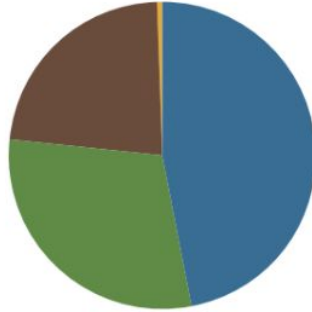
P. 13



P. 24

Core Services

These estimates are based on a \$9.5 billion State School Fund. Estimates for Beaverton and Hillsboro are based on a 3% rollup.



Core Services: \$4,965,969

- Technology: \$2,827,785
- County Allocations: \$1,791,099
- Instruction: \$1,377,428
- Miscellaneous: \$26,546

Beaverton and Hillsboro School Districts:

- Regional Innovations: \$666,326
- Professional Development: \$370,743



Total Core Services: \$6,003,037

County Allocations



Clatsop County

\$291,680



Columbia County

\$358,377



Tillamook County

\$238,651

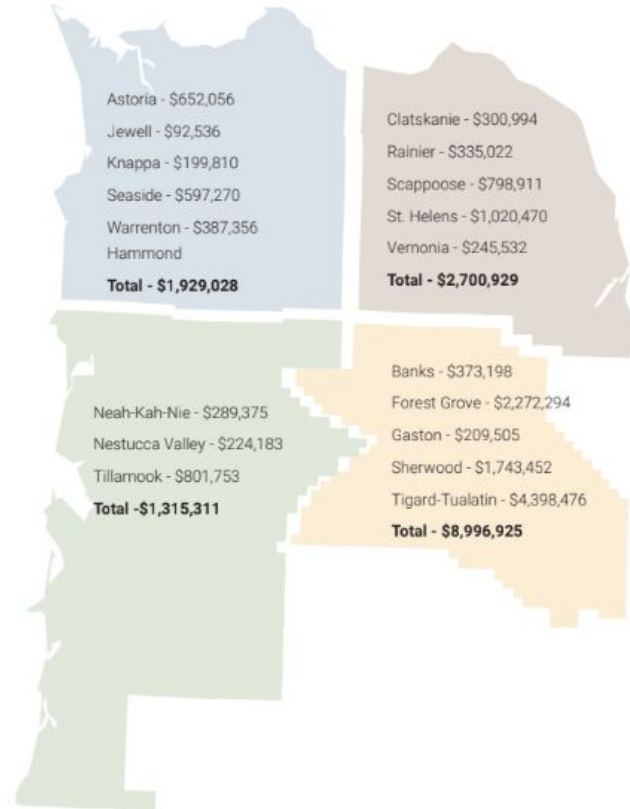


Washington County

\$902,391

Service Credits

These estimates are based on a \$9.5 billion State School Fund.



Core Services (P. 10)

- County Allocations
- Emergency Closure Network
- Grant Management
- Regional Innovations and Professional Learning
- Cybersecurity Services
- Forecast 5
- Help Desk
- Library Services (Follett Destiny Library, Resource Manager and Textbook)
- Network Security Services
- Network Services
- Restraint & Seclusion Application Development
- Technical Engineering Cooperative

Service Menu (P. 13)

Administration

- Communications
- Fiscal Services
- Medicaid Reimbursements
- Spanish Language Interpretation and Translation
- Substitute Services

Early Learning

- Early Intervention/Early Childhood Special Education (EI/ECSE) Evaluations
- EI/ECSE Transportation

Instruction

- Attendance Services
- Cascade Education Corps
- Diverse Educator Pathways
- Grant Management
- Ion MTSS Software
- Oregon Virtual Education (ORVED)
- Reengagement Services
- Willamette Promise

K-12 Special Education

- Audiology
- Autism Spectrum Disorder (ASD) Services
- Behavioral Support Consultation
- Blind Visually Impaired (BVI) Student Services
- Deaf and Hard of Hearing Services
- Nursing Services
- Occupational Therapy (OT) Services
- Physical Therapy (PT) Services
- Regional Equipment Center
- School Psychology Services
- Speech-Language Pathology Services
- Social Emotional Learning Schools

Technology

- Attendance Reconnection System
- Canvas Learning Management System
- Criminal Background Check System
- District Level Technology Purchasing
- Help Desk
- Learning360 Streaming Video
- Oregon Data Suite
- ORSpEd
- Public School Works
- Restraint and Seclusion
- School ERP Pro (formerly Infinite Visions)
- Synergy Student Information System
- Technical Engineering Cooperative

Student Success Act Technical Assistance Plan (P. 24)

- 9th Grade Success Network
- Attendance Collaboratives and Professional Learning
- Communications
- Community Engagement and Family Partnerships
- Early Literacy Network
- Instructional Coaching Network
- MTSS Coaching
- Research, Assessment and Evaluation
- School Culture and Climate
- Social, Emotional and Mental Health Services

Thank you!

Questions?



Proposed Motion:

I move to approve Resolution #___ approving the 2023-24 NWRESD Local Service Plan, as presented.