

May 2016

Derby Public Schools

# Performance Dashboard

---

## Derby High School

Martin Pascal, Principal

*“People without information cannot act. People with information cannot help but act.”*

*Ken Blanchard*



Promotion:

Percent of students promoted

	9	10	11
<b>June, 2015</b>	100%	100%	100%
<b>June, 2014</b>	93%	91%	97%
<b>June, 2013</b>	88%	86%	97%
<b>June, 2012</b>	89%	98%	98%
<b>June, 2011</b>	86%	84%	94%
<b>June, 2010</b>	74%	93%	97%

Dropout:

<u>Year</u>	<u>Annual Dropout Rate</u>
<b>2015</b>	9.18%
<b>2014</b>	10.89%
<b>2013</b>	3.6%
<b>2012</b>	4.5%
<b>2011</b>	7.2%

### State Four-Year Adjusted Cohort Graduation Rates:

Adjusted Cohort are those students who started high school in the ninth grade for the first time and graduate in four years along with any students who enter on grade level at any point during the four year period. Student who transfer out are not included. Any student who discontinues schooling, leaves for a GED or ACD program, or tells the school they are transferring to another school, but never registers with that school are considered a Cohort Dropout, and would be included in the Non-Graduates Other column.

<u>Year</u>	<u>Graduates 4-Year Rate</u>	<u>Non-Graduates Still Enrolled</u>	<u>Non-Graduates Other</u>
2015	83.2%	7.9%	8.9%
2014	81.4%	9.8%	8.8%
2013	68.6%	17.4%	14.0%
2012	77.5%	7.8%	14.7%
2011	71.3%	12.3%	16.4%
2010	73.2%	11.6%	15.2%

### State Five-Year Adjusted Cohort Graduation Rates:

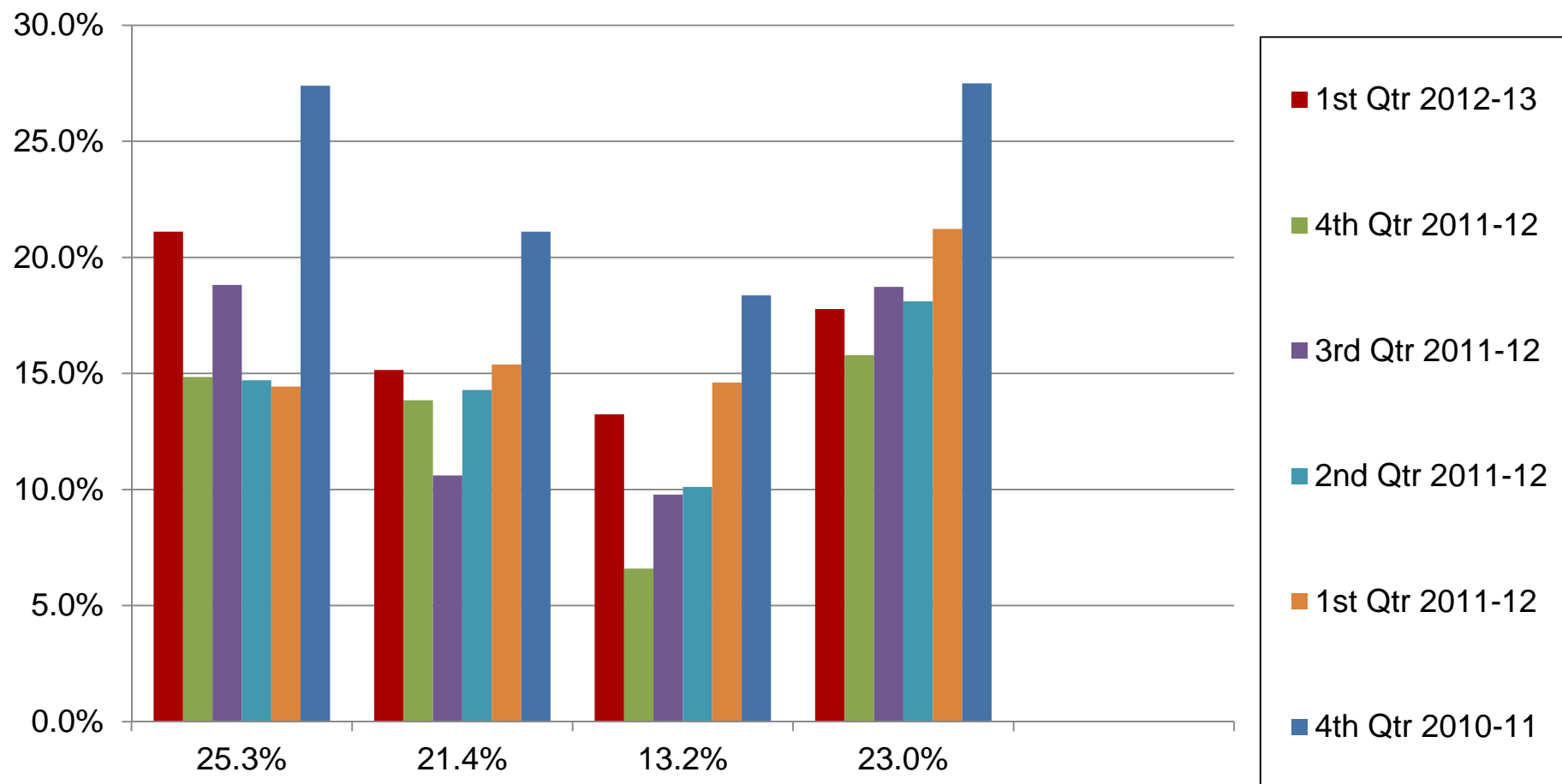
The methodology for this rate is the same as above but with a longer time period. This rate offers some students extra time to remain enrolled in school and graduate with a regular high school diploma.

<u>Year</u>	<u>Graduates 5-Year Rate</u>	<u>Non-Graduates Still Enrolled</u>	<u>Non-Graduates Other</u>
2012	81.6%	0.9%	17.4%

Derby High School

## Post High School Plans

Percent of graduates

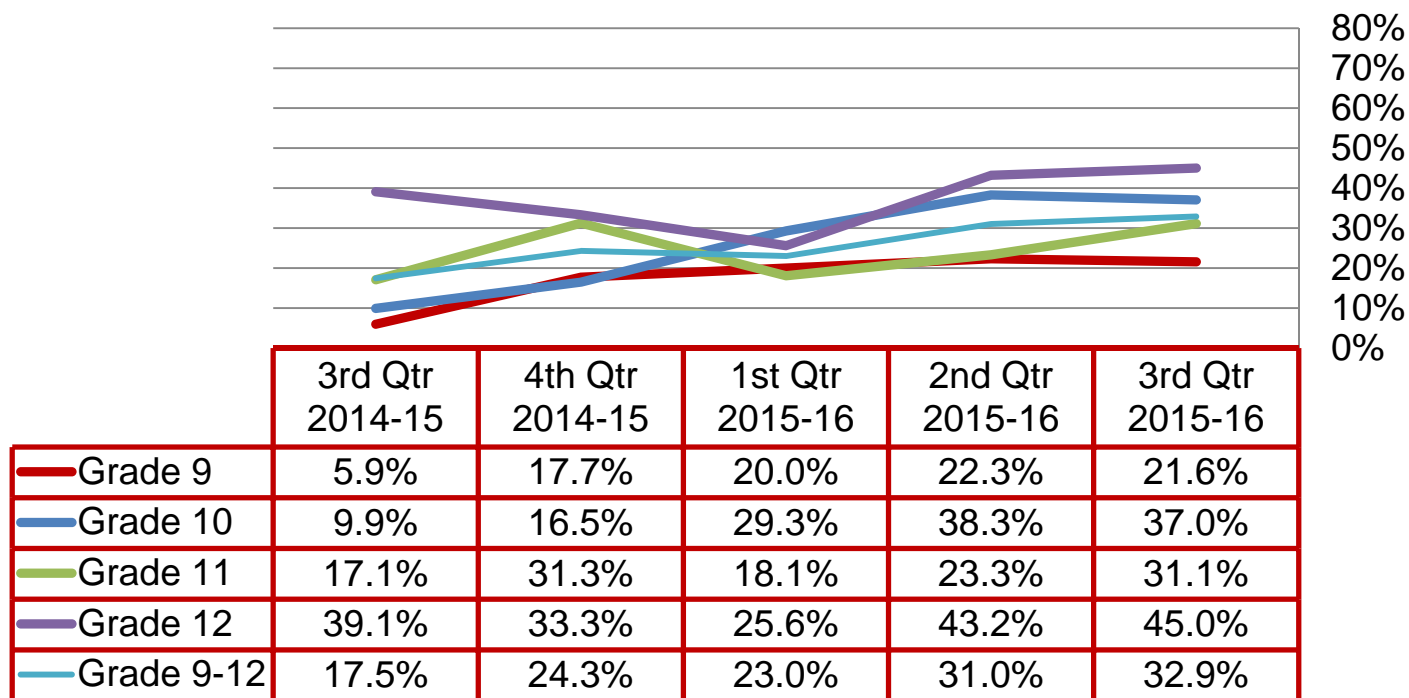


*Information is updated in the fall following graduation*

# Quarterly Data

## High Grades

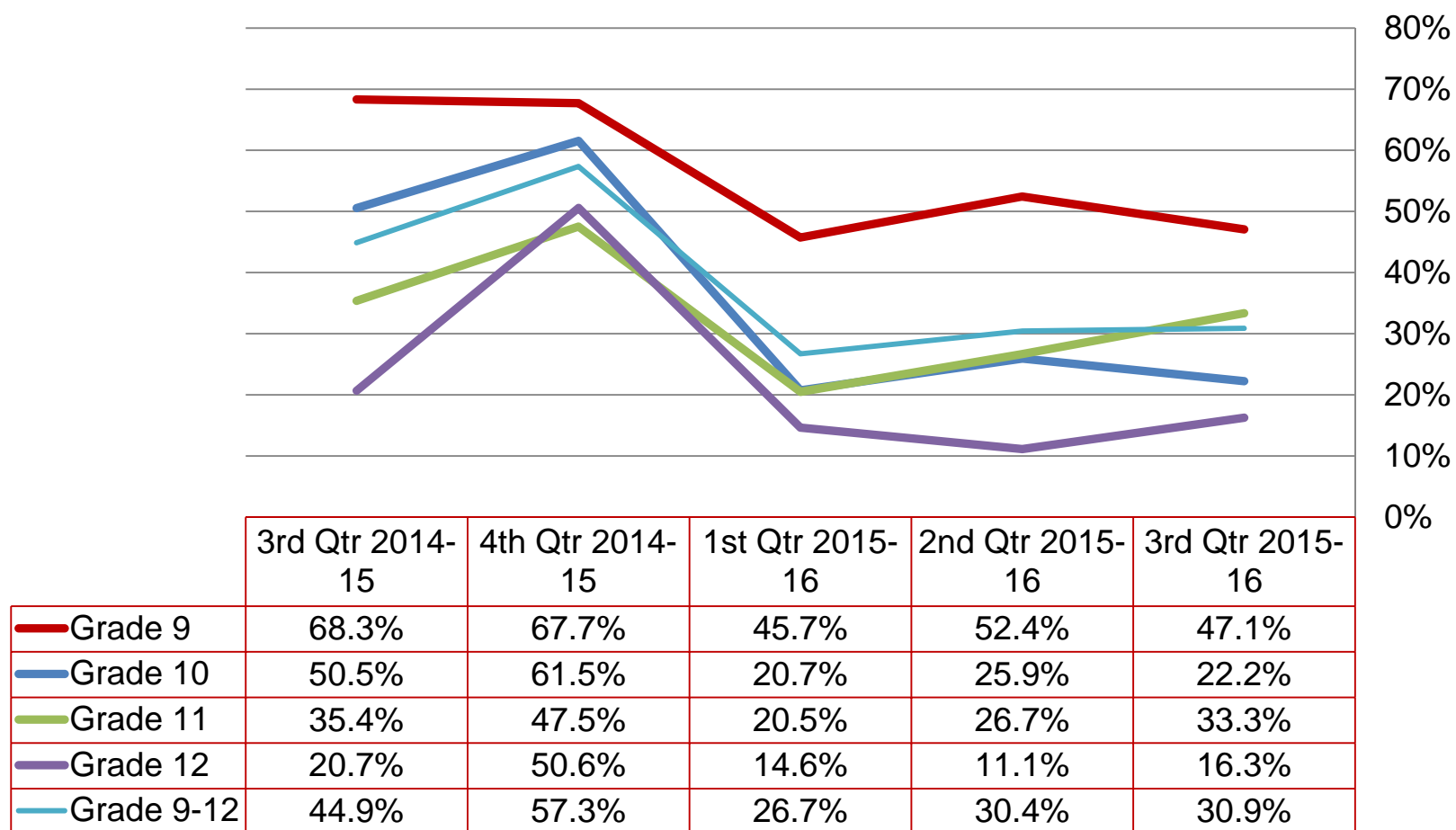
Percent of students earning 80% or above in all courses regardless of academic level:



## Failing Grades

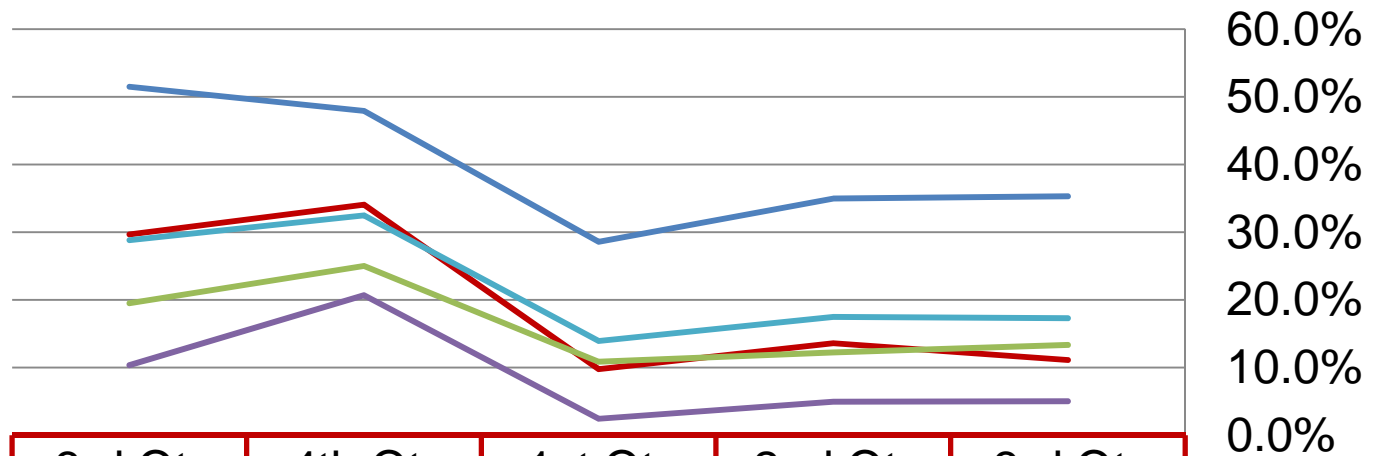
Derby High School

Percent of students with at least one course below a 65%:



# Failing Grades

Percent of students with at least two courses below a 65%:



	3rd Qtr 2014-15	4th Qtr 2014-15	1st Qtr 2015-16	2nd Qtr 2015-16	3rd Qtr 2015-16
— Grade 9	51.5%	47.9%	28.6%	35.0%	35.3%
— Grade 10	29.7%	34.1%	9.8%	13.6%	11.1%
— Grade 11	19.5%	25.0%	10.8%	12.2%	13.3%
— Grade 12	10.3%	20.7%	2.4%	4.9%	5.0%
— Grade 9-12	28.8%	32.5%	13.9%	17.5%	17.3%

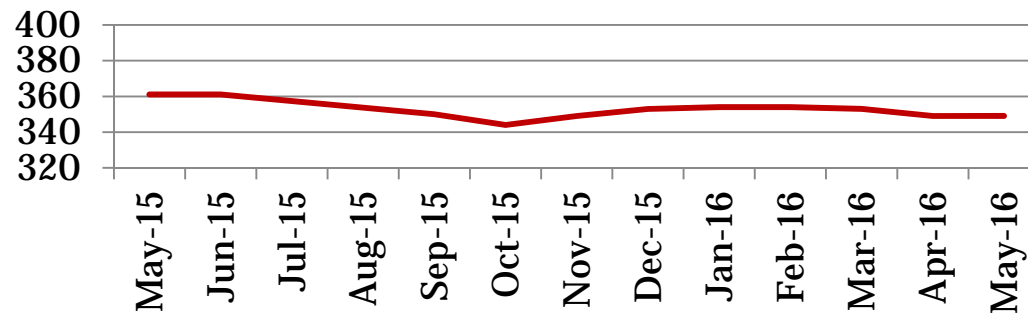
# Monthly Data

Derby High School

## Enrollment – 1<sup>st</sup> of the month

	9	10	11	12	Total
<b>Apr-16</b>	99	81	91	78	<b>349</b>
<b>Apr-16</b>	100	80	91	78	<b>349</b>
<b>Mar-16</b>	102	81	90	80	<b>353</b>
<b>Feb-16</b>	103	81	90	80	<b>354</b>
<b>Jan-16</b>	103	79	90	82	<b>355</b>
<b>Dec-15</b>	105	83	83	82	<b>353</b>
<b>Nov-15</b>	103	83	82	81	<b>349</b>
<b>Oct-15</b>	101	82	80	81	<b>344</b>
<b>Sep-15</b>	105	83	81	81	<b>350</b>
<b>Jun-15</b>	101	91	82	87	<b>361</b>
<b>May-15</b>	101	91	82	87	<b>361</b>

## Total School Enrollment



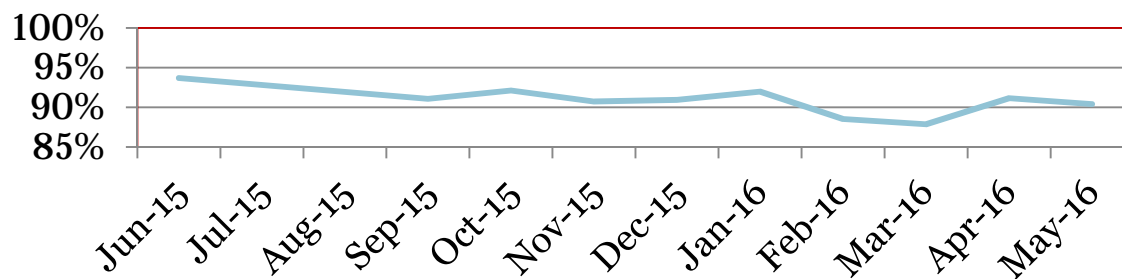


## Attendance – Students

Average daily percent present:

	<b>9</b>	<b>10</b>	<b>11</b>	<b>12</b>	<b>Total</b>
<b>May-16</b>	87	94	92	89	<b>90</b>
<b>Apr-16</b>	90	94	92	89	<b>91</b>
<b>Mar-16</b>	86	91	87	88	<b>88</b>
<b>Feb-16</b>	86	91	89	89	<b>89</b>
<b>Jan-16</b>	88	95	94	92	<b>92</b>
<b>Dec-15</b>	90	91	93	90	<b>91</b>
<b>Nov-15</b>	88	91	94	91	<b>91</b>
<b>Oct-15</b>	89	91	95	95	<b>92</b>
<b>Sep-15</b>	87	91	93	95	<b>91</b>
<b>Jun-15</b>	90	94	95	94	<b>94</b>
<b>May-15</b>	88	92	90	86	<b>89</b>

### **Total Student Attendance**

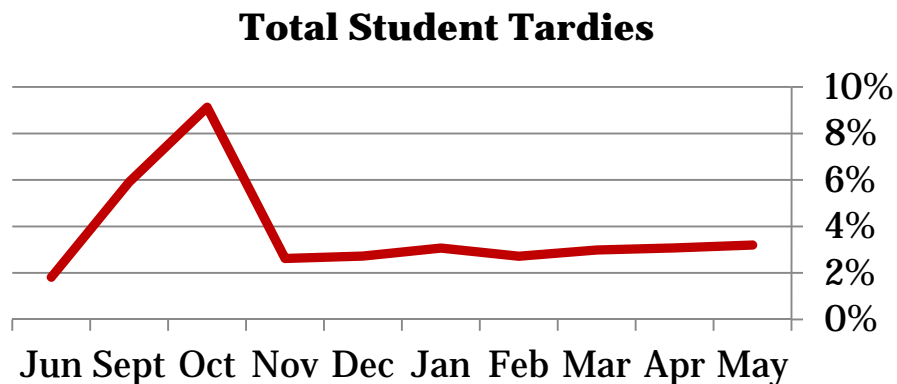


# Tardies

Average daily percent tardy:

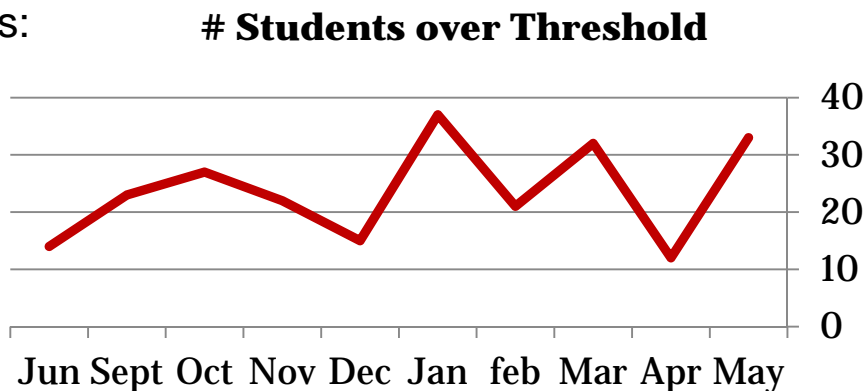
Derby High School

	9	10	11	12	Total
Apr-16	4	3	3	4	3
Apr-16	3	2	3	4	3
Mar-16	3	3	3	3	3
Feb-16	3	2	2	3	3
Jan-16	3	3	5	2	3
Dec -15	3	3	2	3	3
Nov -15	3	2	2	3	3
Oct-15	10	8	9	9	9
Sept-15	6	5	7	6	6
Jun-15	2	2	1	2	2



Number of students tardy 5 or more days:

	9	10	11	12	Total
May-16	11	4	10	8	33
Apr-16	5	2	3	2	12
Mar-16	11	7	6	8	32
Feb-16	7	3	5	6	21
Jan-16	6	2	27	2	37
Dec-15	8	3	1	3	15
Nov-15	8	2	4	8	22
Oct-15	9	6	7	5	27
Sept-15	8	6	4	5	23
Jun-15	3	4	5	2	14

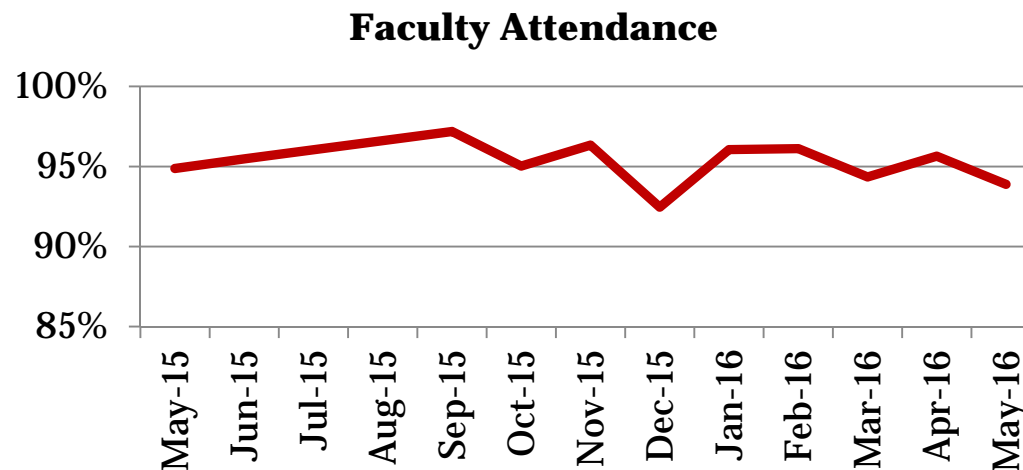


## Attendance – Faculty

Average daily percent present:

Derby High School

	<b>Total</b>
<b>May-16</b>	<b>94</b>
<b>Apr-16</b>	<b>96</b>
<b>Mar-16</b>	<b>94</b>
<b>Feb-16</b>	<b>96</b>
<b>Jan-16</b>	<b>96</b>
<b>Dec-15</b>	<b>92</b>
<b>Nov-15</b>	<b>96</b>
<b>Oct-15</b>	<b>95</b>
<b>Sep-15</b>	<b>97</b>
<b>Jun-15</b>	<b>95</b>
<b>May-15</b>	<b>95</b>



*\*This indicator reflects certified staff and does not include absences created by class trips, professional development, workman's comp and FMLA. However % may be reduced due to long term illness beyond FMLA.*

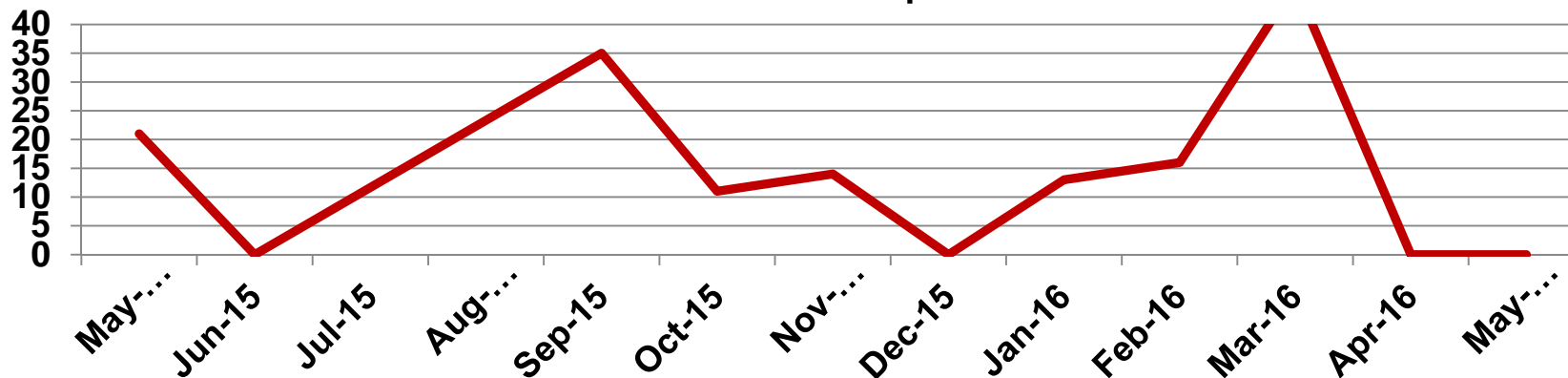
## Suspensions – Out of School

Derby High School

Number of student suspensions (total days of suspension):

	9		10		11		12		Total	
May-16	0	(0)	0	(0)	0	(0)	0	(0)	0	(0)
Apr-16	0	(0)	0	(0)	0	(0)	0	(0)	0	(0)
Mar-16	3	(22)	1	(10)	1	(3)	2	(12)	7	(47)
Feb-16	1	(2)	0	(0)	2	(12)	1	(2)	4	(16)
Jan-16	2	(11)	0	(0)	0	(0)	2	(2)	4	(13)
Dec-15	0	0	0	(0)	0	(0)	0	(0)	0	(0)
Nov-15	1	(10)	0	(0)	2	(4)	0	(0)	3	(11)
Oct-15	3	(9)	10	(2)	0	(0)	0	(0)	13	(11)
Sep-15	1	(10)	1	(5)	2	(20)	0	(0)	4	(35)
Jun-15	0	(0)	0	(0)	0	(0)	0	(0)	0	(0)
May-15	1	(3)	4	(17)	1	(1)	0	(0)	6	(21)

Total Out of School Suspensions

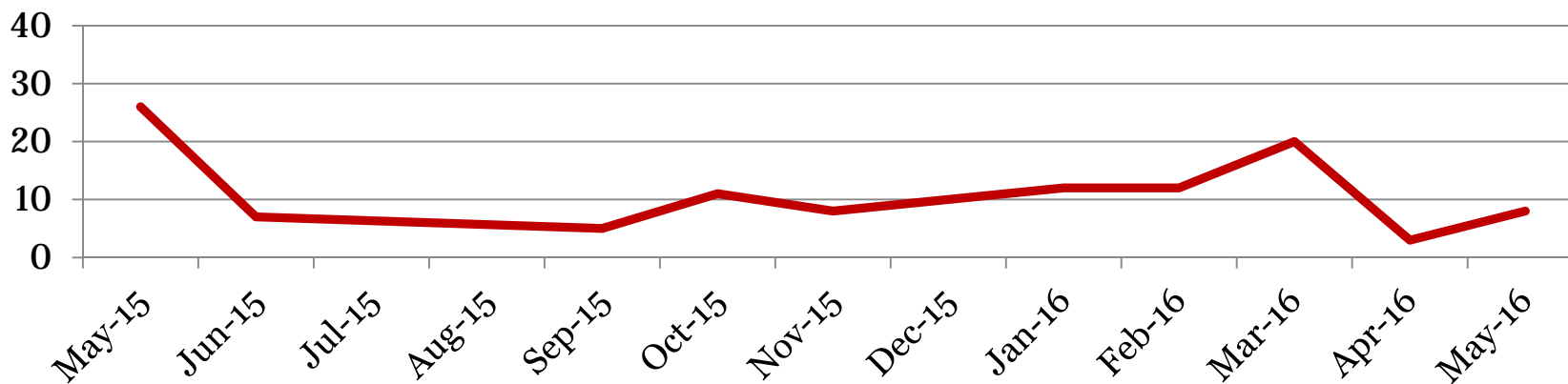


## Suspensions – In School

Number of student suspensions (total days of suspension):

	9		10		11		12		Total	
<b>Apr-16</b>	6	(7)	0	(0)	0	(0)	1	(1)	7	<b>(8)</b>
<b>Apr-16</b>	0	(0)	1	(1)	0	(0)	1	(2)	2	<b>(3)</b>
<b>Mar-16</b>	2	(2)	2	(3)	2	(2)	7	(13)	13	<b>(20)</b>
<b>Feb-16</b>	4	(6)	3	(4)	0	(0)	2	(2)	9	<b>(12)</b>
<b>Jan-16</b>	8	(9)	0	(0)	2	(3)	0	(0)	10	<b>(12)</b>
<b>Dec-15</b>	5	(7)	0	(0)	2	(3)	0	(0)	7	<b>(10)</b>
<b>Nov-15</b>	4	(4)	0	(0)	1	(1)	2	(3)	7	<b>(8)</b>
<b>Oct-15</b>	7	(8)	1	(1)	2	(2)	0	(0)	10	<b>(11)</b>
<b>Sep-15</b>	1	(1)	1	(2)	1	(1)	1	(1)	4	<b>(5)</b>

**Total In School Suspensions**



## Newly Enrolled Students

	<b>9</b>	<b>10</b>	<b>11</b>	<b>12</b>	<b>Total</b>
<b>May-16</b>	0	1	1	1	<b>3</b>
<b>Apr-16</b>	0	1	0	0	<b>1</b>
<b>Mar-16</b>	0	0	1	0	<b>1</b>
<b>Feb-16</b>	0	1	1	0	<b>2</b>
<b>Jan-16</b>	1	2	0	0	<b>3</b>
<b>Dec-15</b>	3	1	1	0	<b>5</b>
<b>Nov-15</b>	3	1	2	1	<b>7</b>
<b>Oct-15</b>	3	1	3	0	<b>7</b>
<b>Sep-15</b>	5	2	1	3	<b>11</b>
<b>Summer-15</b>	1	0	0	0	<b>1</b>
<b>Jun-15</b>	1	0	0	0	<b>1</b>
<b>May-15</b>	0	0	0	0	<b>0</b>

## Departing Students

Students who have left the school during the month for any reason:

	<b>9</b>	<b>10</b>	<b>11</b>	<b>12</b>	<b>Total</b>
<b>May-16</b>	1	1	2	0	<b>4</b>
<b>Apr-16</b>	1	0	0	0	<b>1</b>
<b>Mar-16</b>	2	1	0	1	<b>4</b>
<b>Feb-16</b>	1	1	1	0	<b>3</b>
<b>Jan-16</b>	1	0	1	2	<b>4</b>
<b>Dec-15</b>	0	1	0	1	<b>2</b>
<b>Nov-15</b>	1	2	0	0	<b>3</b>
<b>Oct-15</b>	0	0	2	1	<b>3</b>
<b>Sep-15</b>	6	10	1	1	<b>18</b>
<b>Summer-15</b>	1	1	0	0	<b>2</b>
<b>Jun-15</b>	2	0	0	0	<b>2</b>
<b>May-15</b>	1	0	0	0	<b>1</b>

## Dropouts

Derby High School

Student who discontinue schooling, leave for a GED program/Job Corp, or are disenrolled by grade level.

	<b>9</b>	<b>10</b>	<b>11</b>	<b>12</b>	<b>Total</b>
<b>Mar-16</b>	1	0	1	0	<b>2</b>
<b>Feb-16</b>	0	0	1	0	<b>1</b>
<b>Jan-16</b>	0	0	0	0	<b>0</b>
<b>Dec-15</b>	0	1	0	0	<b>1</b>
<b>Nov-15</b>	0	0	2	0	<b>2</b>
<b>Oct-15</b>	1	0	1	1	<b>3</b>
<b>Sept 2015</b>	0	0	1	1	<b>2</b>
<b>Summer-15</b>	0	0	0	0	<b>0</b>
<b>Jun-15</b>	0	0	0	1	<b>1</b>
<b>May-15</b>	0	0	0	0	<b>0</b>
<b>Apr-15</b>	0	0	0	0	<b>0</b>
<b>Mar-15</b>	<b>0</b>	<b>1</b>	<b>0</b>	<b>0</b>	<b>1</b>



### Projected Cohort Rate Percentage:

	<u>Class of 2018</u>			<u>Class of 2017</u>			<u>Class of 2016</u>			<u>Class of 2015</u>		
	Grad	Retain	Drop	Grad	Retain	Drop	Grad	Retain	Drop	Grad	Retain	Drop
<b>June -15</b>	99	0	1	97	0	2	99	0	1	98	1	1
<b>Apr-15</b>	100	0	0	87.64	12.36	0	83.91	12.64	3.45	80.61	11.22	8.16
<b>Mar-15</b>	100	0	0	87.64	12.36	0	83.91	12.64	3.45	80.61	11.22	8.16
<b>Feb-15</b>	100	0	0	86.67	13.33	0	83.91	12.64	3.45	80.61	11.22	8.16
<b>Jan-15</b>	100	0	0	86.67	13.33	0	82.95	14.77	2.27	80.20	12.87	6.93
<b>Dec-14</b>	100	0	0	85.56	14.44	0	83.72	15.12	1.16	80.20	13.86	5.94
<b>Nov-14</b>	100	0	0	85.39	14.61	0	80.00	18.89	1.11	79.61	14.56	5.83
<b>Oct-14</b>	100	0	0	85.39	14.61	0	79.12	19.78	1.10	79.81	15.38	4.81
<b>Sep-14</b>	100	0	0	87.50	12.50	0	79.12	19.78	1.10	79.81	15.38	4.81

Projected rates can be affected by several factors including but not limited to student transfers, mid-year grade level changes or updated exit codes.