

LINE	BEARING	DIST.	LINE	BEARING	DIST.
L1	S86°13'37"E	391.77'	L28	S00°24'07"E	5.00'
L2	S03°49'00"W	43.42'	L29	S89°35'53"W	20.00'
L3	S00°06'08"E	524.85'	L30	N00°24'07"W	20.00'
L4	N89°53'52"E	47.84'	L31	S89°35'53"E	20.00'
L5	N00°06'08"W	5.00'	L32	N00°24'07"E	5.00'
L6	N89°53'52"E	20.00'	L33	N89°34'39"E	160.80'
L7	S00°06'08"E	5.00'	L34	N00°25'21"W	726.46'
L8	N89°53'52"E	47.84'	L35	N17°35'50"E	63.05'
L9	N00°05'28"W	5.00'	L36	N00°16'07"W	1103.20'
L10	N89°53'52"E	40.00'	L37	S89°53'52"W	5.00'
L11	S00°05'28"E	20.00'	L38	N00°05'28"W	20.00'
L12	S89°53'52"W	40.00'	L39	N89°53'52"E	20.00'
L13	N00°05'28"W	5.00'	L40	S00°06'08"E	5.00'
L14	S89°53'52"W	47.84'	L41	N89°53'52"E	77.15'
L15	S00°06'08"E	5.00'	L42	N44°53'52"E	14.07'
L16	S89°53'52"W	20.00'	L43	N00°06'08"W	1019.51'
L17	N00°06'08"W	5.00'	L44	N03°49'00"E	23.42'
L18	S89°53'52"E	488.80'	L45	N86°13'37"W	10.00'
L19	S00°06'08"W	5.00'	L46	N03°49'00"E	10.00'
L20	S44°53'52"W	22.35'	L47	N86°13'37"W	371.77'
L21	S89°53'52"W	81.29'	L48	S77°18'59"W	149.74'
L22	S00°06'08"E	5.00'	L49	S12°41'01"E	5.00'
L23	S89°53'52"W	5.00'	L50	S77°18'59"W	28.05'
L24	S00°16'07"E	104.75'	L51	N11°23'26"W	15.28'
L25	S17°35'50"W	63.03'	L52	N77°18'59"E	27.58'
L26	S00°25'21"E	734.88'	L53	S12°41'01"E	5.00'
L27	S89°34'39"W	170.81'	L54	N77°18'59"E	150.59'

LOT 1, BLOCK 1  
 KELLER HIGH SCHOOL No. 4 ADDITION  
 CAB. B SLIDE 3458  
 P.R.T.C.T.

**EXHIBIT "B"**  
**0.771 ACRE**

**ELECTRIC EASEMENT**

Being a portion of  
 Lot 3 and 6X, Block 1  
 And Lot 1, Block 2  
 KELLER HIGH SCHOOL  
 NO. 4 ADDITION  
 City of Keller  
 Tarrant County, Texas

ACCESS, DRAINAGE &  
 UTILITY EASEMENT  
 34' RIGHT-OF-WAY  
 VOL. 388-191, PG. 94

CURVE	LENGTH	RADIUS	DELTA	CL	CB
C1	170.83	1435.00	6°49'11"	170.70	S89°38'13"E
C2	69.66	1018.50	3°55'08"	69.65	S01°51'26"W
C3	70.35	1028.50	3°55'07"	70.33	N01°51'26"E
C4	168.78	1425.00	6°47'10"	168.68	N89°37'12"W
C5	4.73	530.00	0°30'39"	4.73	N11°08'06"W

LOT 1, BLOCK 1  
 MEADOW GLEN ESTATES  
 VOL. 388-215, PG. 66,  
 P.R.T.C.T.

**NOTES:**

- Bearings are based on the Texas State Plane Coordinate System, North Central Zone (NAD83).
- Integral parts of this survey:
  - Legal Description
  - Sketch

*Ricky L. Gentry*

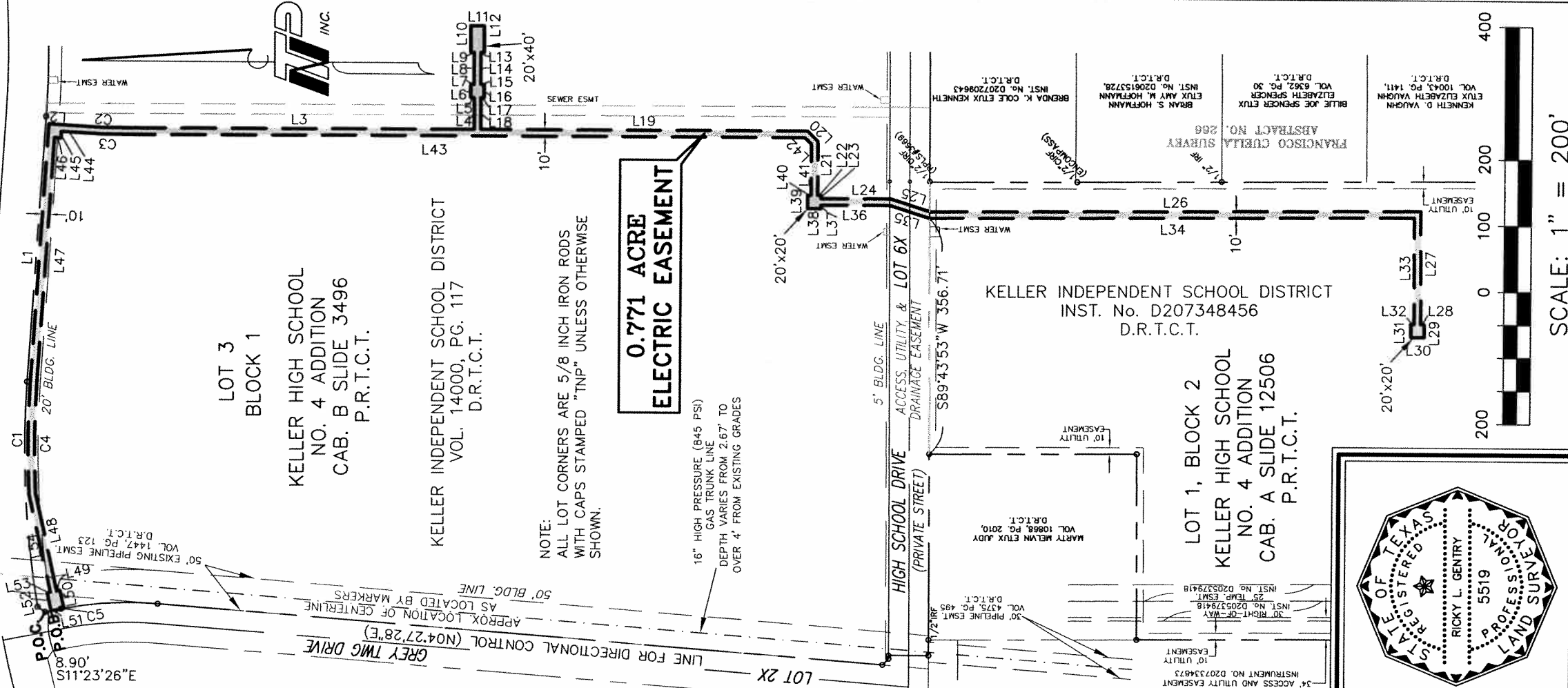
Ricky L. Gentry, R.P.L.S.  
 Texas Registration No. 5519

March 3, 2009

Date:

JOB NO. KSD06162

**TIMBERLAND BOULEVARD**



LOT 3  
 BLOCK 1  
 KELLER HIGH SCHOOL  
 NO. 4 ADDITION  
 CAB. B SLIDE 3496  
 P.R.T.C.T.

KELLER INDEPENDENT SCHOOL DISTRICT  
 VOL. 14000, PG. 117  
 D.R.T.C.T.

NOTE:  
 ALL LOT CORNERS ARE 5/8 INCH IRON RODS  
 WITH CAPS STAMPED "TNP" UNLESS OTHERWISE  
 SHOWN.

**0.771 ACRE  
 ELECTRIC EASEMENT**

16" HIGH PRESSURE (845 PSI)  
 GAS TRUNK LINE  
 DEPTH VARIES FROM 2.67' TO  
 OVER 4' FROM EXISTING GRADES

KELLER INDEPENDENT SCHOOL DISTRICT  
 INST. No. D207348456  
 D.R.T.C.T.

LOT 1, BLOCK 2  
 KELLER HIGH SCHOOL  
 NO. 4 ADDITION  
 CAB. A SLIDE 12506  
 P.R.T.C.T.

