



## UNITED INDEPENDENT SCHOOL DISTRICT AGENDA ACTION ITEM

**Topic:** Proposed Boundary Changes for 2015-2016 School Year

**Submitted by:** Mike Garza **of:** Assistant Superintendent of Support Services

**Approved for transmittal to school board:** March 25, 2015

### **Recommendations:**

Administration is recommending that the Board of Trustees approve the proposed boundary changes for the school year 2015-2016 as presented for Perez Elem., Roosevelt Elem., Prada Elem., Centeno Elem., new Elementary #27, Los Obispos Middle School and Lamar Bruni Vergara Middle School.

- For school year 2015-2016 incoming PK through 5<sup>th</sup> grade students from Roosevelt, Perez, and Prada areas will attend Elementary #27.
- For school year 2015-2016 incoming PK through 5<sup>th</sup> grade students from Centeno area will attend Roosevelt Elementary.
- For school year 2015-2016 incoming 6<sup>th</sup> grade students from Los Obispos Middle School area will attend Lamar Bruni Vergara Middle School.

With the proposed changes the Transportation Department is projecting a surplus of +2 buses.

### **Rationale:**

The propose changes will help alleviate the schools that are overcrowded, allow for growth in the newly constructed elementary campus and maintain proper feeder pattern.

### **Budgetary Information:**

N/A

### **Board Policy Reference and Compliance**

N/A

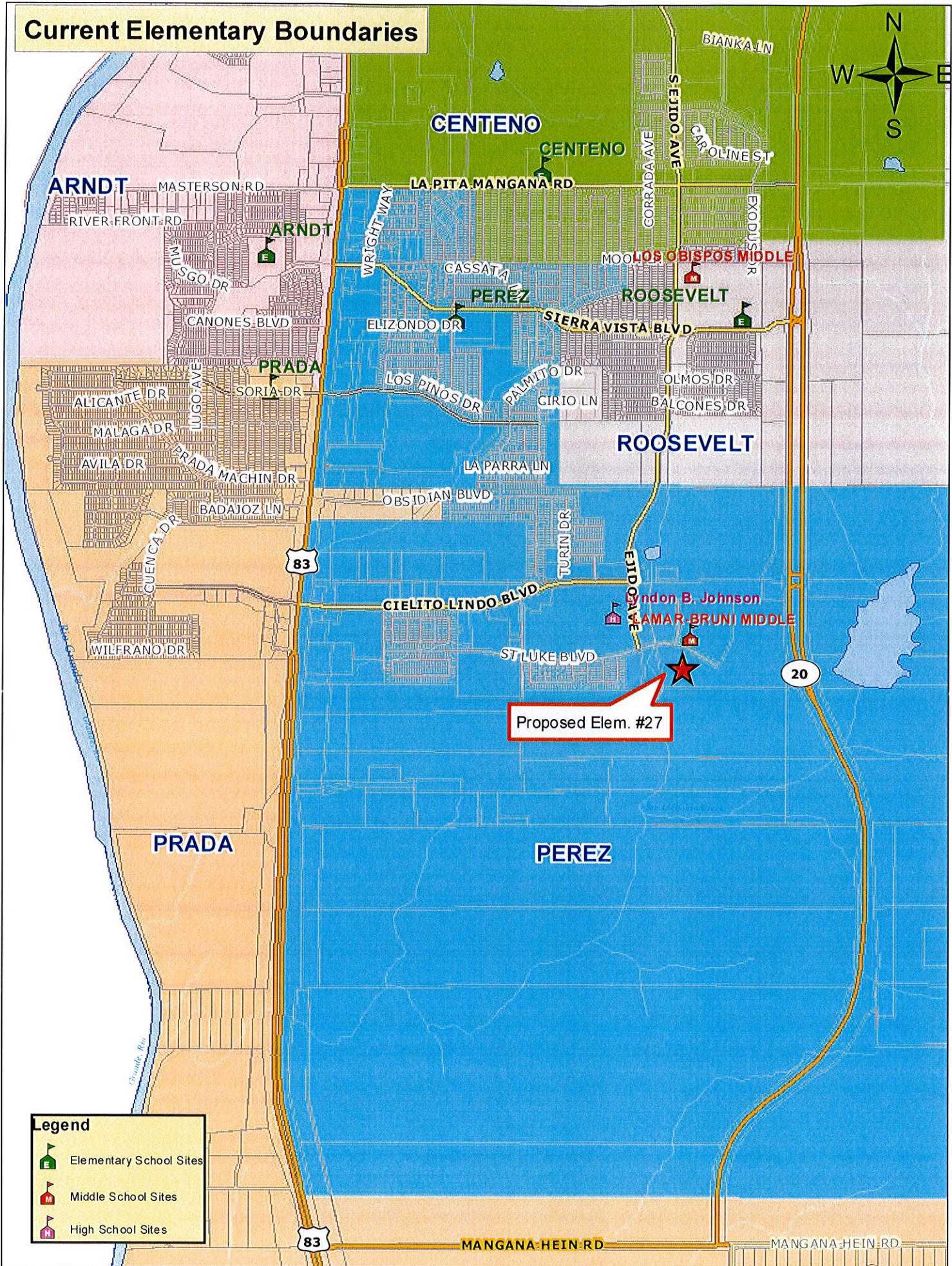
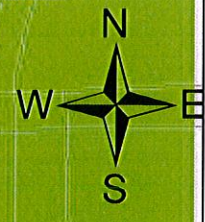
**Elementary #27 Proposed Boundary Change  
Projected Enrollment  
School Year 2015 - 2016**

Elementary School	Projected Enrollment	Boundary Impact	Adjusted Projected Enrollment
	2015-2016		2015-2016
Perez	1132	-408	<b>724</b>
Prada	780	-58	<b>722</b>
Roosevelt	712	-114	598
Elementary #27	0	+580	<b>580</b>
Centeno	983	-87	<b>896</b>
Roosevelt	598	+87	<b>685</b>

**Lamar Bruni Vergara Middle School Proposed Boundary Change  
Projected Enrollment  
School Year 2015 - 2016**

Middle School	Projected Enrollment	Boundary Impact	Adjusted Projected Enrollment
	2015-2016		2015-2016
Los Obispos	1020	-24	<b>996</b>
Lamar Bruni Vergara	892	24	<b>916</b>

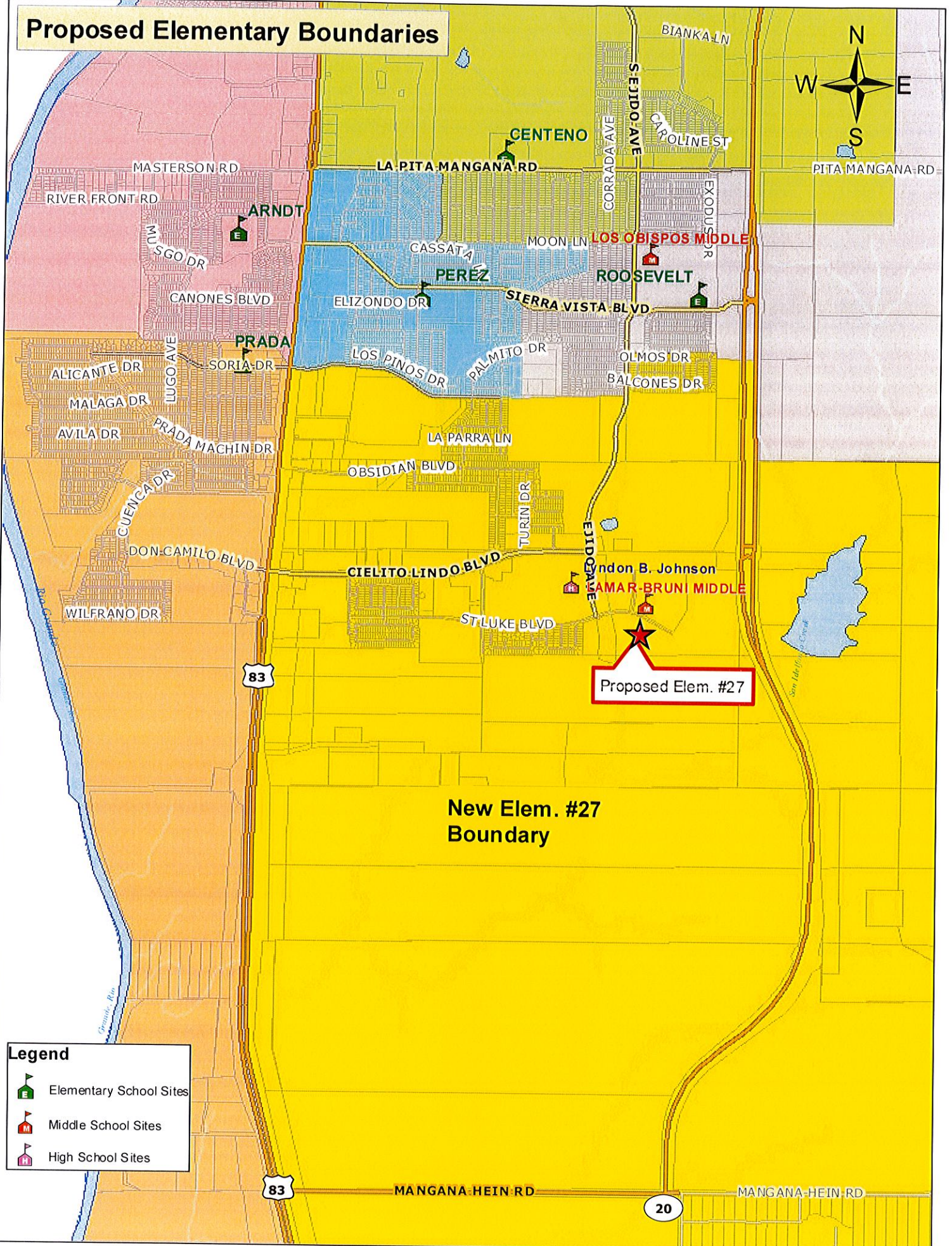
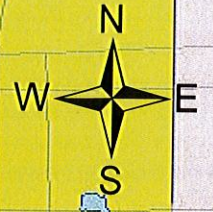
# Current Elementary Boundaries



**Legend**

- Elementary School Sites
- Middle School Sites
- High School Sites

# Proposed Elementary Boundaries



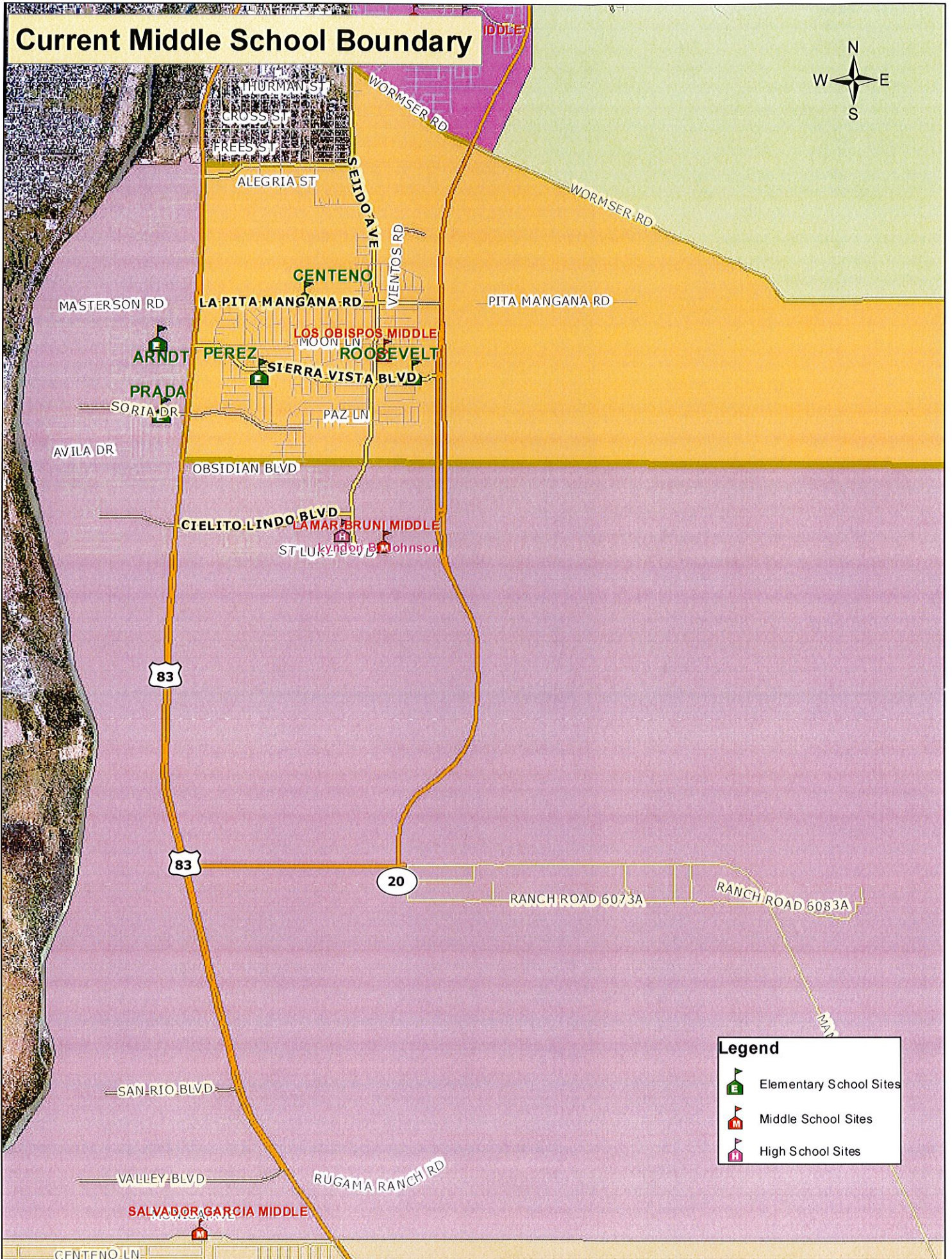
**New Elem. #27  
Boundary**

**Legend**

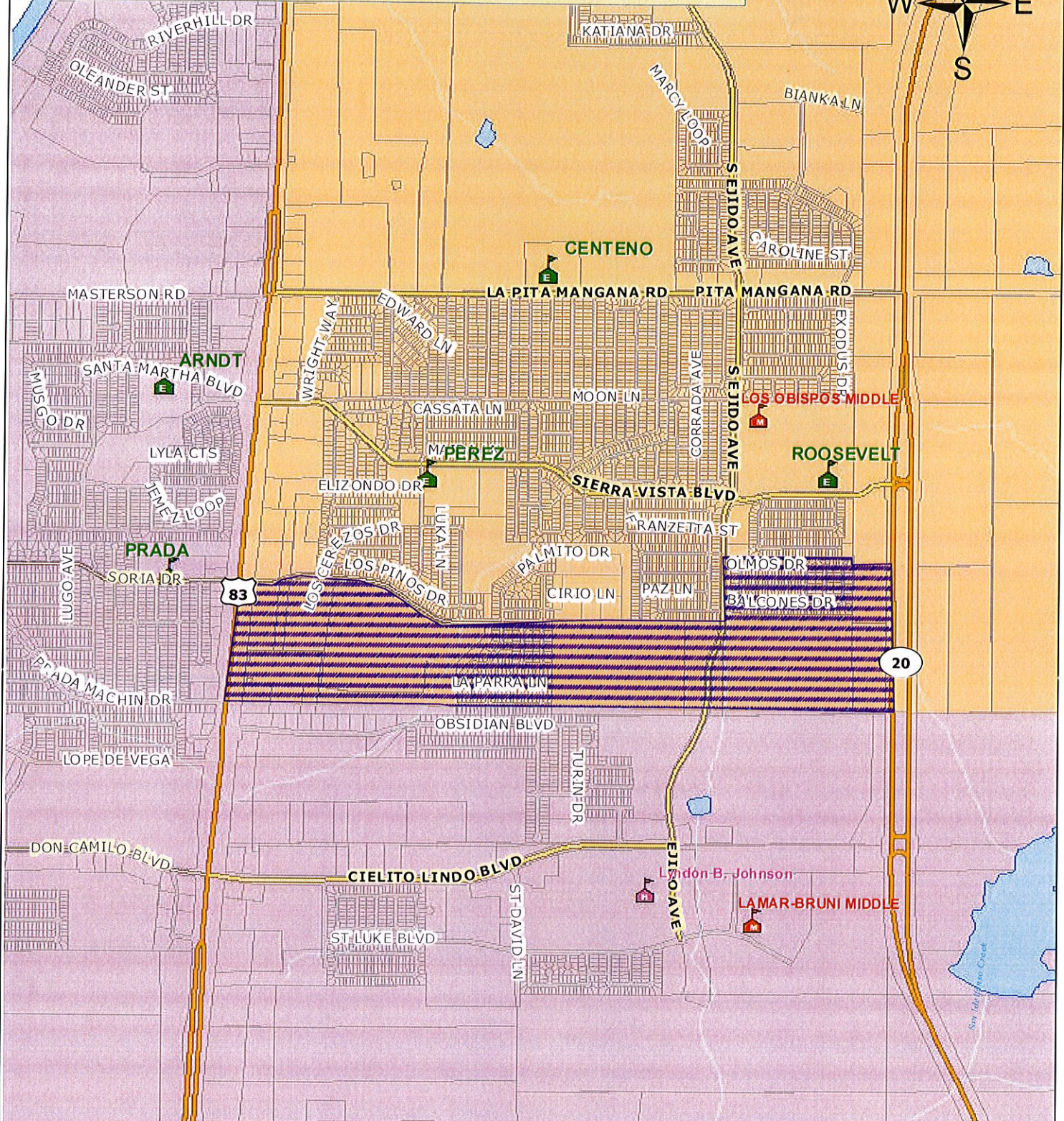
- Elementary School Sites
- Middle School Sites
- High School Sites

**Proposed Elem. #27**

# Current Middle School Boundary



# Proposed Boundary Changes Lamar Bruni Vergara / Los Obispos Middle Schools



**Legend**

- Elementary School Sites
- Middle School Sites
- High School Sites
- Proposed Area to LBVMS

## **United Independent School District**

### **Proposed School Attendance Boundaries for 2015-2016**

#### Perez Elementary School

Northwest boundary at US Hwy 83S and La Pita Mangana Rd, East of La Pita Mangana Rd; South of San Rafael Ln; continue south to include Costello Lp. Southwest boundary at East US Hwy 83S and Soria Dr; North of Soria Dr.

#### Roosevelt Elementary School

Northwest boundary starts at Ejido Ave and La Pita Mangana Rd. East on La Pita Mangana Rd to Cuatro Vientos Rd; South to include Chula Vista Dr, Paradise Dr; West on Moon Ln, South of Valero Ct; the subdivisions east which include Colonia Los Obispos and El Eden (east of Ejido Ave).

#### Prada Elementary School

Northeast boundary starts on US Hwy 83S and Soria Dr, North on Casares Ct, West on Pamplona Lp to Rio Grande River. Boundary expands south on West of US Hwy 83S until just north of Paseo de Danubio Rd.

#### Centeno Elementary School

Northwest US Hwy 83S and Lomas del Sur Blvd; south on Hwy 83S to La Pita Mangana Rd; East on La Pita Mangana Rd to La Brea Ln; to include all students south on La Brea Ln to North Moon Ln and East of Ejido Ave; all students North of intersection of La Pita Mangana Rd and Ejido Ave, Cuatro Vientos Rd to Wormser Rd.

#### Elementary #27

Northwest boundary at US Hwy 83S and Soria Dr continue south to include: El Eden Subdivision, La Joya, Village South and Cielito Lindo Subdivision; East of Soria Dr; North of Ejido Ave; East of Olmos Dr to Cuatro Vientos Rd; Boundary expands south of East US Hwy 83 S to include all students residing on Mangana Hein Rd (Las Presas area).

#### Lamar Bruni Vergara Middle School

Boundary starts on the corner of Soria Dr and US Hwy 83S (to include all students residing on the west side of Hwy 83), going East on Soria Dr; North of Ejido Ave; East of Olmos Dr to Cuatro Vientos Rd; South on Cuatro Vientos and East to the UISD boundary line. South along the UISD boundary line to the southernmost point of the UISD boundary line. West just north of the City Limits of Rio Bravo to the Rio Grande River. North along Rio Grande River to the UISD boundary line. West to the US Hwy 83.