



Kaufman I.S.D.

Date: September 19, 2025

Body Manufacturer: IC Corp

Model: C3411 CE SCHOOL BUS

Chassis Manufacturer: IC Corp

Model: PB110 (2026)

Capacity: 77 Passengers

Number of units: 1

Price/Unit: \$153,802.00

TOTAL: \$153,802.00

Prices are good 30 days from the date of this proposal.

Standard Body Specifications	Chassis Specifications
78" headroom standard	Engine: Cummins ISB 6.7
13 rows of 3pt seats with gray upholstery	Horsepower: 240
National air suspension driver seat w/ cloth insert, gray	Torque: 560 lb-ft
Modesty panel under barrier behind driver	Wheelbase: 276"
First aid kit, body fluid clean-up kit, safety triangles,	Transmission: Allison 2500 6sp, 6 th gen. controls
5lb fire extinguisher & belt cutter	Shift control: Stalk shifter, column mounted
16 ga. steel exterior body side panels	Alternator: 325 amp
Skirt mounted battery box w/slide out tray	Battery system: 3, 12 volt 2850 CCA
Full insulation (<i>roof & sides</i>)	Brakes: Full air; 5" front, 7" rear
Full length acoustical ceiling panels	Air dryer: Bendix AD-9SI w/heater
Body undercoating, fire resistant	Front axle: 10,000#, lubricated
3-piece bonded windshield w/tint & L/R assist handles	Rear axle: 21,000#, lubricated
Windshield wipers, w/automatic headlamp activation	Tires: 11R22.5 LRH all-position
Stepwell; preformed NaviFlex coated pebble tread	Wheels: 8.25x22.5 black steel 2-hand hole
Black rubber flooring w/ aluminum aisle strips	Fuel tank: 100 gallon between frame rails
School bus yellow paint w/ black rub rails & bumpers	DEF tank: 16.5 gallon
White interior paint	Steering, power: Tilt w/switch controls (<i>4 PGM</i>)
Rear view mirror inside (<i>6 x 30</i>) w/ visor	Power source: USB A & C in driver storage bin
Rosco mini Hawk-Eye cross over mirrors	Communication module: OTA programming w/ 5yr data plan and International 360
Rosco rearview mirrors (<i>black, motorized, heated</i>)	Fuel/Water separator: Racor 400 series
Warning lights, 8-lamp, LED strobing; black back-ground flasher system, red lights active w/ door open	Gauge cluster: Premium 5" LCD color display
Pre-trip exterior light check	Air cleaner rest. gauge: Mounted on air cleaner
LED interior passenger dome lights	Cruise control
LED driver dome on separate switch	Idle mgmt. system
LED step well light	Air-ride suspension
State spec LED exterior light package	Warning buzzers
Tail pipe, exits left side through bumper	Auto. slack adjusters
Dash air conditioner w/ integral heater / defroster and automotive style driver controls	

Longhorn Bus Sales
9100 N. Loop East, Houston, Texas 77029
Phone: (713) 631-9306

Body Options Included	Chassis Options Included
<ul style="list-style-type: none"> Collision mitigation; Bendix Wingman Advanced Digital clock in driver area Drivers' area defrost fan (<i>left</i>) Drivers' overhead storage compartment AM/FM/USB Input/Aus. Input/PA system 8 Speakers, mounted in light bar Waste container; removable in driver area Handrails; dual height SS each side of entry Entry door - Air (<i>outward opening; full length single panel laminated door panel glass and keyed lock</i>) Lock; rear door w/ignition starter interlock White roof Reflective material per state specs Air stop arms; front and rear Specialty roof hatches (2) Four emergency E/E windows, vertical hinge Windows, passenger; laminated tint split sash LED strobe light Monitor, post trip inspection "Child Reminder" Sub floor 5/8" 5-ply plywood sub floor 84,500 BTU rear heater 	<ul style="list-style-type: none"> Bendix 4-channel ABS brakes with electronic stability and automatic traction control Bendix Intellipark electronic parking brake w/interlock Engine exhaust brake Headlamps, halogen w/daytime running lights & automatic twilight controlled. Multi-function rotary switch left of driver black grille with chrome surround Throttle (<i>electronic hand control</i>) <u>Warranty towing: 24 months/Unlimited miles to nearest IC bus dealer</u> <hr/> <p style="text-align: center;">Additional Aftermarkets and Services</p> <hr/> <ul style="list-style-type: none"> PDI DOT Inspection Lettering (KAUFMAN I.S.D.) Govern speed set at 65mph Weight Slip Air conditioning 136K BTU (<i>2 bulkheads, 1 mid-shift and drivers dash</i>) LED stop arms - Air (front & rear) LED "SCHOOL BUS" sign

Both body and chassis specifications meet or exceed Texas School Bus Specification # 070-SB-16 for 2018.

Authorized Signature _____

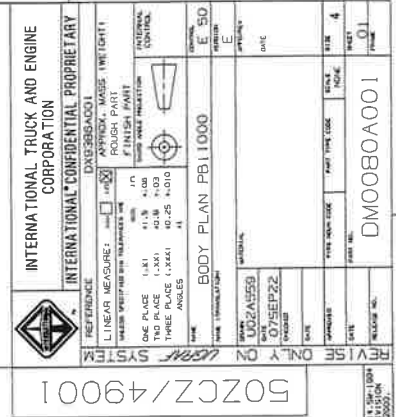
All stock buses are subject to prior sale.

Buy Board fee not included. If purchasing through Buy Board, an additional \$800.00 must be applied to purchase order (fee is per purchase order not per bus). Longhorn Buy Board number 722-23.

Estimated delivery is 60 -180 days from receipt of PO (dependent on whether bus is built or scheduled to build). Longhorn Bus Sales will not be held responsible for material shortages or delays due to the global COVID-19 pandemic or any other reasons outside our control of the represented OEMs (IC Corp) or third-party vendors used to complete a customers' bus equipment. A bus may be delivered without third-party products (i.e., A/C, GPS, two-way radios, camera surveillance, etc.) and will be installed when available. These shortages will not hold up invoicing of payments for delivered goods.

Longhorn Bus Sales
9100 N. Loop East, Houston, Texas 77029
Phone: (713) 631-9306

PBI1000, 34 FT. 11 IN., PLUS 9 RR, CAP 77



THIS UNIT CONFORMS TO APPLICABLE FMVSS

THIS UNIT CONFORMS TO APPLICABLE FMVSS