



# Advanced Learning Services: Meeting the Needs of All Learners

Update to Board of Education  
September 2025

# Background



- State law requires services for advanced learners
- Enrichment/advanced learning have existed, but with variation
- 2023–24 audit: need clearer structure & consistency
- Neighboring district models reviewed
- Past practice: too broad, not targeted enough
- New model = enrichment for all + targeted services for outliers



# Why This Work Matters



Every student deserves the right level of challenge.



Most thrive with strong grade-level instruction.



A small number are 'outliers' working far beyond grade level.



Targeted services prevent diluted rigor and misuse of resources.

# Guiding Principles



- Services, not labels - no 'gifted and talented' program
- Advanced potential exists in all backgrounds

- Profile-based identification: MAP + CogAT + holistic review
- Flexible placement, reviewed annually

# CTD Audit Recommendations



- ✓ Blended model: enrichment + targeted instruction/acceleration
- ✓ Profile-based student identification
- ✓ Extend math acceleration into 4th & 5th
- ✓ Explore similar ELA acceleration
- ✓ Clear continuum of services

# Services for All Students K-5



Beginning in Fall of 2024

- Weekly science & social studies enrichment blocks
- Focus on citizenship, critical thinking, communication
- Enrichment portfolios for family sharing
- Field experiences

# Advanced Learning Grades 3-5

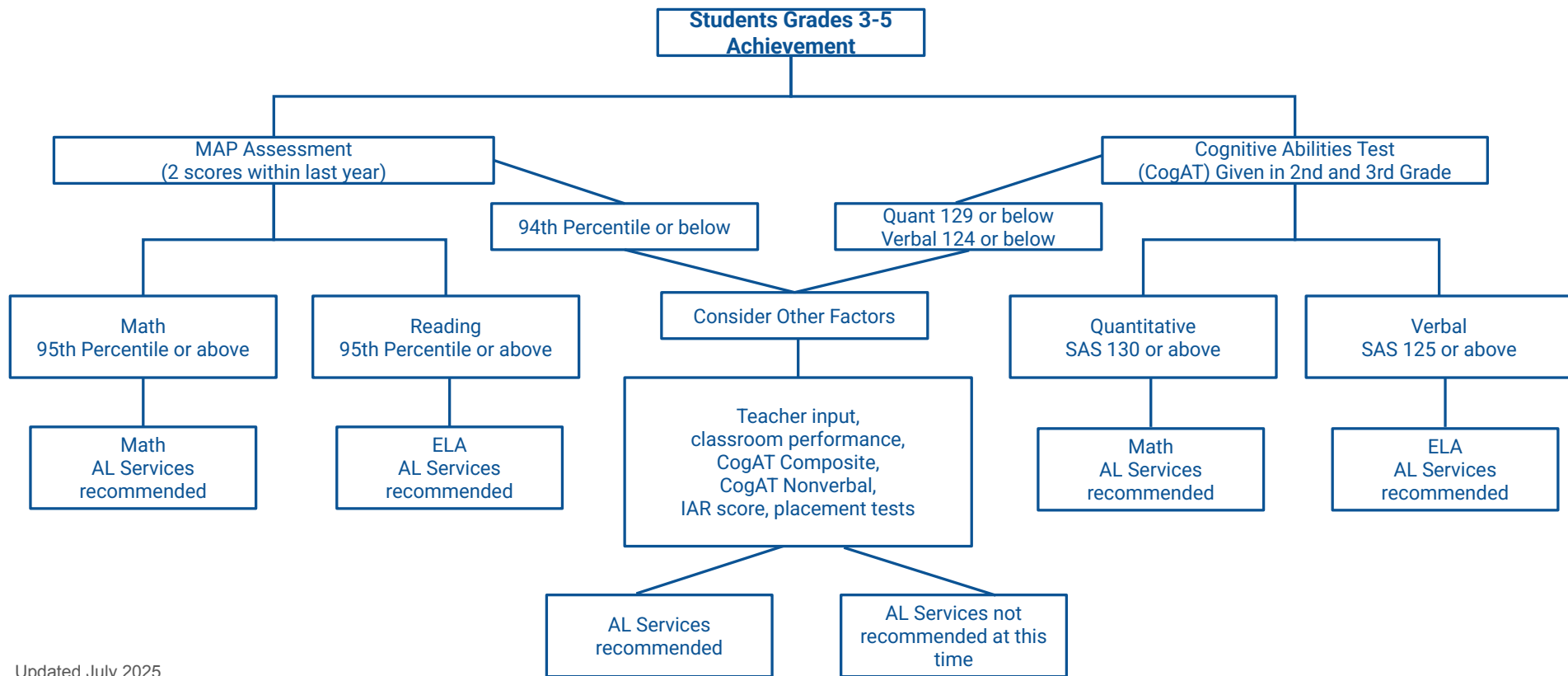


**Beginning in Fall of 2025**

- **Small-group pull out instruction in ELA and/or Math, 2x per week**
  - **Delivered by our Enrichment Specialists**
- **Identification after fall testing (MAP & CogAT)**
- **Families notified directly**
- **Instruction aligned to advanced readiness**

# Lake Bluff Advanced Learning Services Program

## Steps for Identification





# Advanced Learning Grades K-2

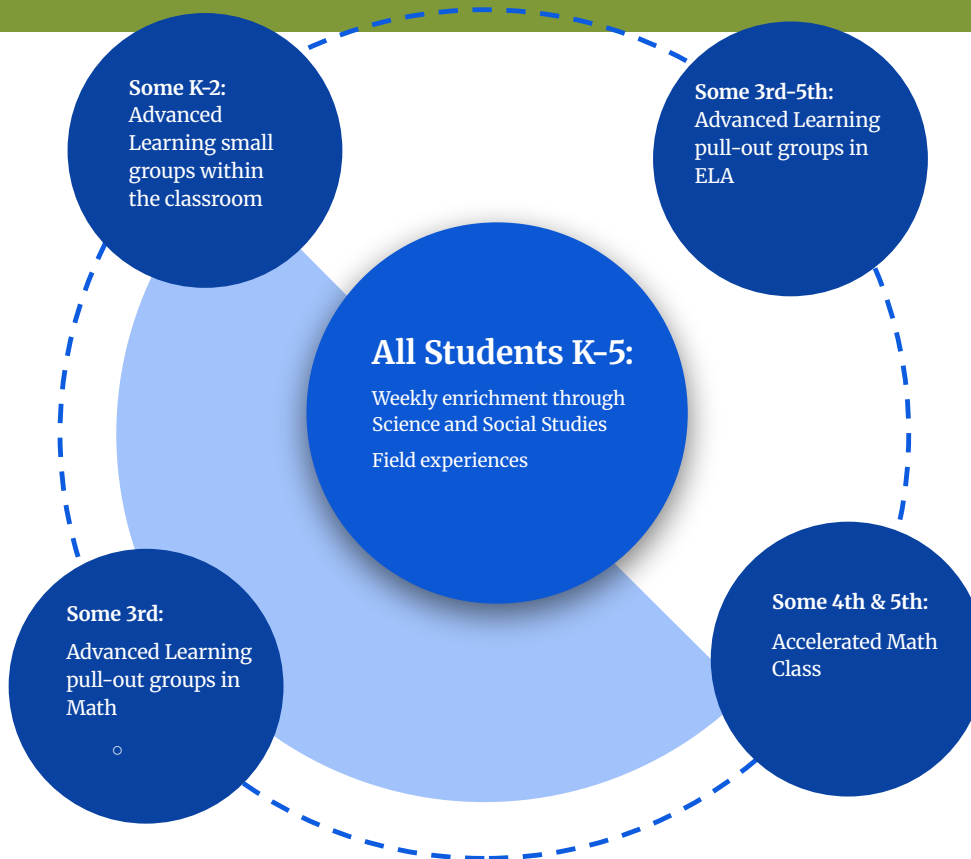


**Beginning in Fall of 2025**

- **Differentiated learning within the classroom**
- **Instruction delivered by the classroom teacher**
- **Enrichment team supports classrooms with:**
  - **Curriculum compacting**
  - **Differentiation strategies**
  - **Advanced learning resources**
  - **Support with family inquiries**



# Enrichment Continuum



# Goals for 2025–2026



- Continue to build our culture where every child is challenged and supported
- Monitor and refine services at LBES
  - Provide targeted instruction for true outliers
  - Increase family communication
- Begin schoolwide experiences at LBMS
  - 1 field experience at each grade level

# Closing Message



- Lake Bluff has always been committed to excellence
- This model ensures enrichment for all students
- Advanced learners receive the challenge they need
- Balancing rigor and resources so every child can thrive



**Thank You**