



742 MULTI-PURPOSE ATHLETIC CENTER

BOARD MEETING PRESENTATION
DECEMBER 3, 2025



PROJECT OVERVIEW

The 742 Multi-Purpose Athletic Center (MAC) is a new indoor athletic practice facility located on the grounds of Apollo High School in St. Cloud, Minnesota. Designed to serve both the school district and the broader community, the facility provides a year-round venue for physical education, athletics, and wellness. The project is anchored by a full-size indoor turf field housed under a pre-engineered metal frame structure, with adjacent support spaces for administration, restrooms, and mechanical systems.

The indoor turf field is designed for maximum flexibility, supporting a wide range of sports including soccer, football, softball, and lacrosse. Above the main field, a mezzanine level offers dedicated space for multisport training, including batting cages, golf simulators, and other performance-focused amenities. This layered approach allows for simultaneous use by different teams and programs, maximizing the facility’s value and impact for students and the community.

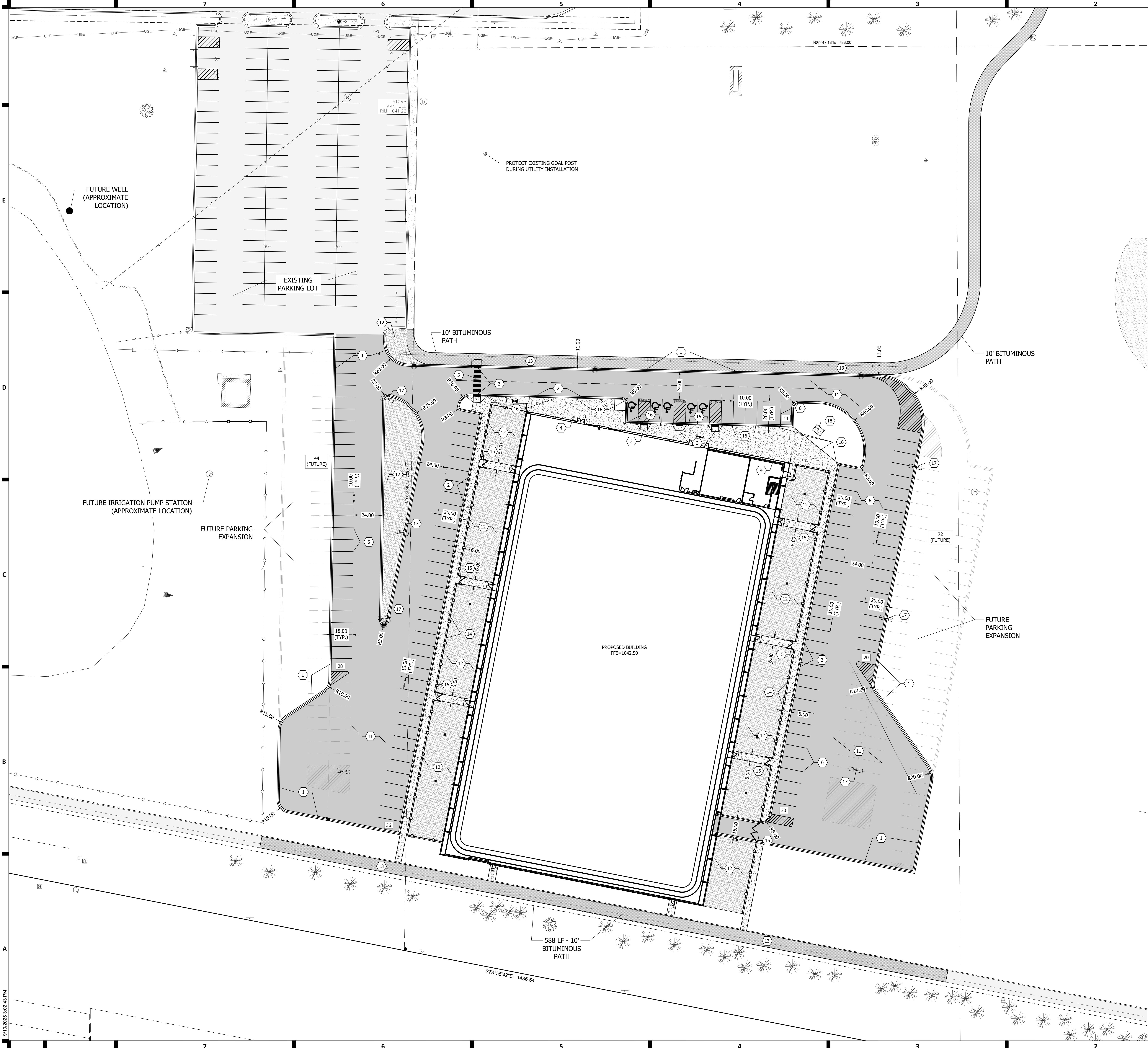
The design blends durable, modern materials with thoughtful detailing to create a space that is both high-performing and inspiring. The project reflects the district’s commitment to student success, community partnership, and long-term sustainability. Construction is anticipated to begin in May of 2026 and will position the 742 MAC as a cornerstone of health and activity for decades to come

PROJECT SCHEDULE

| | |
|------------------------|----------------------------------|
| SCHEMATIC DESIGN | April 13 - July 2, 2025 |
| DESIGN DEVELOPMENT | July 6 - September 19, 2025 |
| CONSTRUCTION DOCUMENTS | September 22 - December 19, 2025 |
| BIDDING | January - February, 2026 |
| CONSTRUCTION | May 2026 - April 2027 |

P:\022-JLG\02225002-APOLLO HS REFERENCE\DWG\CIVIL\02225002_C-BASE-PROPOSED.DWG ### 1/24/2025

3/10/2025 3:02:43 PM



- NOTES:**
- ALL DIMENSIONS SHOWN ARE TO FLOW LINE, CENTERLINE OF FENCE, EDGE OF PAVEMENT, OR EXTERIOR FACE OF BUILDING, UNLESS OTHERWISE NOTED.
 - CONTRACTOR SHALL VERIFY ALL PLAN AND DETAIL DIMENSIONS PRIOR TO CONSTRUCTION.
 - ALL CROSSWALK STRIPING SHALL BE WHITE IN COLOR.
 - ALL INTERIOR PARKING STALL STRIPING SHALL BE 4" AND YELLOW IN COLOR.
 - ACCESSIBLE PARKING STALL STRIPING, ACCESS AISLE, SYMBOL, AND SIGNAGE SHALL BE IN ACCORDANCE WITH LOCAL AUTHORITY REQUIREMENTS.
 - CONTRACTOR SHALL MAINTAIN FULL ACCESS TO ADJACENT PROPERTIES DURING CONSTRUCTION AND TAKE ALL PRECAUTIONS NECESSARY TO AVOID PROPERTY DAMAGE TO ADJACENT PROPERTIES.
 - ALL SITE WORK SHALL BE PERFORMED IN ACCORDANCE WITH THE RECOMMENDATIONS OF THE GEOTECHNICAL ENGINEER.
 - CONTRACTOR SHALL PROVIDE A TEMPORARY PEDESTRIAN ACCESS ROUTE PLAN FOR ANY WORK PERFORMED WITHIN THE PUBLIC RIGHT-OF-WAY.
 - CONTRACTOR SHALL PROVIDE A TEMPORARY TRAFFIC CONTROL PLAN FOR ANY WORK PERFORMED WITHIN THE PUBLIC RIGHT-OF-WAY.
 - GOPHER STATE ONE CALL DAMAGE PREVENTION SYSTEM FOR BURIED UTILITIES. 1-800-252-1166. CONTRACTOR SHALL HIRE A PRIVATE UTILITY LOCATOR TO ASSIST WITH PRIVATE UTILITY LOCATES.

SITE LEGEND

- CLASS II RIP RAP
- LIGHT DUTY BITUMINOUS PAVEMENT
- HEAVY DUTY BITUMINOUS PAVEMENT
- CONCRETE SIDEWALK
- CURB AND GUTTER
- TIPPED CURB AND GUTTER
- CHAINLINK FENCE
- TRAFFIC CONTROL SIGNAGE
- PAINTED DIRECTIONAL ARROW
- PAINTED ACCESSIBLE PARKING SYMBOL

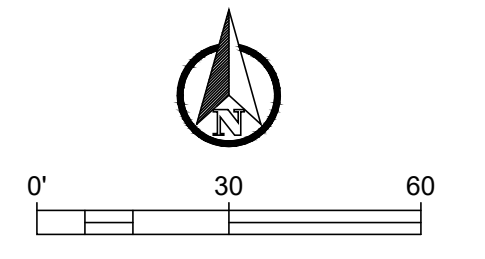
PROPERTY INFORMATION

| | |
|--------------------------|-------|
| TOTAL PROPERTY AREA | X AC |
| DISTURBED AREA | X ±AC |
| EXISTING IMPERVIOUS AREA | X AC |
| PROPOSED IMPERVIOUS AREA | X AC |

PARKING INFORMATION

| | |
|-----------------------|------------|
| PARKING STALLS | 120 STALLS |
| ACCESSIBLE STALLS | 5 STALLS |
| TOTAL STALLS | 125 STALLS |
| FUTURE PARKING STALLS | 116 STALLS |

- KEY NOTES:**
- D4 MOUNTABLE CURB AND GUTTER
 - B612 CURB AND GUTTER
 - ADA PEDESTRIAN RAMP (SEE DETAILS)
 - CONCRETE SIDEWALK
 - CROSSWALK STRIPING
 - PARKING STRIPING
 - "NO PARKING" SIGN & POST
 - "ACCESSIBLE PARKING" SIGN & POST
 - ACCESSIBLE PARKING MARKINGS
 - POLE/PYLON SIGN (SEE ARCH)
 - BITUMINOUS PAVEMENT
 - CLASS II RIP RAP
 - BITUMINOUS PATH
 - DECORATIVE FENCE (SEE ARCHITECTURAL)
 - GATE (SEE ARCHITECTURAL)
 - BOLLARDS W/LIGHTS (SEE ELECTRICAL)
 - LIGHT POLES (SEE ELECTRICAL)
 - TRANSFORMER CONCRETE PAD (SEE ELECTRICAL)



JLG architects

505 W Saint Germain Street
Suite 200
St. Cloud, MN 56301
phone: (202) 468-7008
www.jlgarchitects.com
copyright © 2025

DESIGN TREE
engineering + land surveying

Corporate Office: MN 56308
120 17th Avenue
888-216-1016

HEREBY CERTIFY THAT THIS PLAN, SPECIFICATION, OR REPORT WAS PREPARED BY ME OR UNDER MY CLOSE PERSONAL SUPERVISION AND THAT I AM A LICENSED PROFESSIONAL ENGINEER UNDER THE LAWS OF THE STATE OF MINNESOTA.

PRINTED NAME: JEREMY E. ANDERSON
DATE: _____
LICENSE #: 4423

THIS DRAWING AND THE INFORMATION THEREIN IS THE PROPERTY OF DESIGN TREE ENGINEERING INC. USE BY THE HOLDER OR DISCLOSURE TO OTHERS WITHOUT THE PERMISSION OF DESIGN TREE ENGINEERING INC. IS PROHIBITED. IT CONTAINS PROPRIETARY AND CONFIDENTIAL INFORMATION OF DESIGN TREE ENGINEERING INC. REPRODUCTION OF THE MATERIAL HEREIN WITHOUT WRITTEN PERMISSION OF DESIGN TREE ENGINEERING INC. VIOLATES THE COPYRIGHT LAWS OF THE UNITED STATES AND WILL SUBJECT THE VIOLATORS TO LEGAL PROSECUTION.

COPYRIGHT © 2025 BY DESIGN TREE ENGINEERING

REVISION SCHEDULE

| NO. | DESCRIPTION | DATE |
|-----|-------------|------|
|-----|-------------|------|

**PRELIMINARY:
NOT FOR CONSTRUCTION**

ST. CLOUD SCHOOL DISTRICT
742 MULTIPURPOSE ATHLETIC CENTER
ST. CLOUD, MN

DATE
09/19/25

PHASE
DESIGN DEVELOPMENT

PROJECT
02225002

SHEET
C201

SITE PLAN



505 W Saint Germain Street
Suite 200
St. Cloud, MN 56301
phone: (320) 498-7008
www.jlgarchitects.com
copyright © 2025

| SHEET SPEC ID LIST | |
|--------------------|----------------------------|
| SPEC ID | SPEC SECTION & DESCRIPTION |

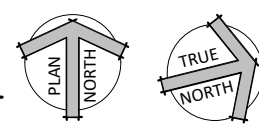
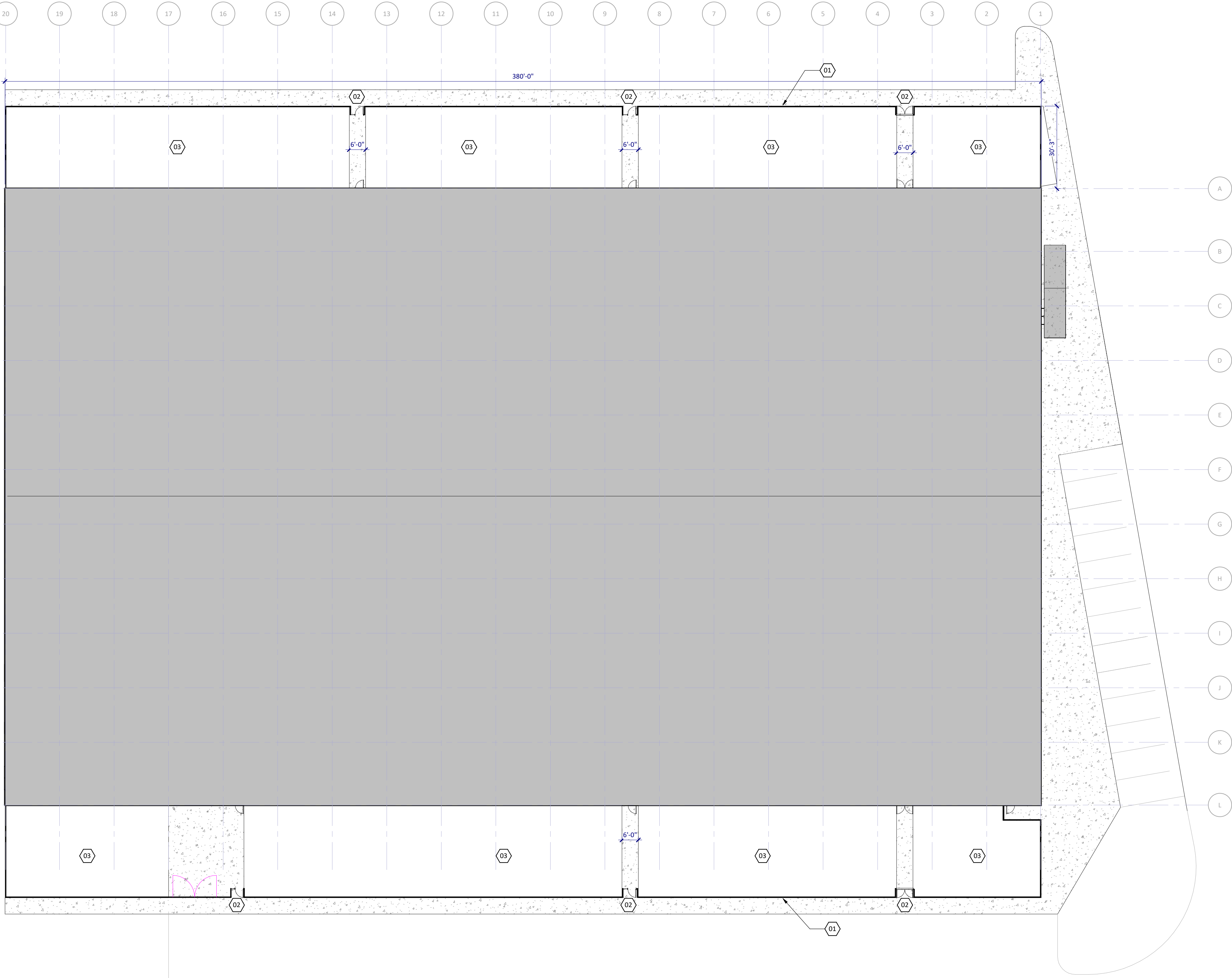
| KEYNOTES - SITE PLAN | | |
|----------------------|--|------|
| NO. | NOTE | REV. |
| 01 | 6' HIGH FENCE AROUND SNOW BUFFER PERIMETER | |
| 02 | SELF-CLOSING GATE WITH PANIC HARDWARE | |
| 03 | SNOW BUFFER ZONE WITH ROCKS, SEE CIVIL | |

| REVISION SCHEDULE | | |
|-------------------|-------------|------|
| NO. | DESCRIPTION | DATE |

ST. CLOUD SCHOOL DISTRICT
742 MULTIPURPOSE ATHLETIC FACILITY
ST. CLOUD, MN

| | |
|----------------------------|-------------|
| DATE | 10/20/2025 |
| PHASE | BID PACK #1 |
| PROJECT | 19230.03 |
| SHEET | A100 |
| ARCHITECTURAL SITE PLAN | |

VETERANS DRIVE



| SHEET SPEC ID LIST | |
|--------------------|--|
| SPEC ID | SPEC SECTION & DESCRIPTION |
| FBRKT-1 | 10 4400 - FIRE EXTINGUISHER BRACKET |
| MET FAB-1 | 05 5000 - STEEL PIPE BOLLARD, 6 INCH DIAMETER, CONCRETE FILLED |

JLGarchitects

505 W Saint Germain Street
Suite 200
St. Cloud, MN 56301
phone: (320) 498-7008
www.jlgarchitects.com
copyright © 2025

| KEYNOTES - FLOOR PLAN | |
|-----------------------|---|
| NO | NOTE |
| 1 | ADA DOOR PUSH PLATE, WALL MOUNTED - SEE ELEVATION. CONNECTED TO LOW-ENERGY SWING DOOR OPERATOR; SEE ELECTRICAL. |
| 2 | ADA SLIM VESTIBULE PUSH PLATE, MULLION-MOUNTED - SEE ELEVATION. SEE ELECTRICAL. |
| 3 | EXTERIOR STOOP; SEE STRUCTURAL. |
| 4 | KNOTLESS NYLON NETTING SUPPORTED BY PEFS FRAME |
| 5 | STAINLESS STEEL BOLLARD WITH ADA DOOR PUSH PLATE; SEE ELECTRICAL. |
| 7 | ICE MACHINING BY OWNER. |
| 8 | REFRIGERATOR BY OWNER. |
| 9 | PROVIDE (FRP-1) FOR 48" AT EACH SIDE OF BASIN AND PROVIDE (MOP-1), REFER TO MOUNTING HEIGHT SHEETS |
| 11 | HI-LO DRINKING FOUNTAIN WITH BOTTLE FILLER |
| 13 | VENDING MACHINES BY OWNER. |
| 14 | LIMITED-USE/LIMITED APPLICATION ELEVATOR |
| 15 | ARU - SEE MECHANICAL. |
| 16 | AG WALL EXTENDS UP TO STRUCTURE ABOVE - SEE STRUCTURAL FOR CONNECTION |
| 17 | KNOTLESS NYLON DIVIDER CURTAIN SUPPORTED BY PEFS FRAME |
| 18 | BATTING CASE COLUMN |
| 19 | OVERLAPPED NETTING FOR ENTRY/EXIT |

GENERAL NOTES - FLOOR PLAN

A. FOR TYPICAL BARRIER FREE TOILET ROOM TYPES AND ACCESSORIES REQUIREMENTS AND LOCATIONS SEE DWG G120.

B. FOR TYPICAL HOUSEKEEPING CLOSETS ACCESSORIES REQUIREMENTS AND MOUNTING LOCATIONS SEE DWG G120.

C. ALL PARTITION TYPES ARE "A4" TYPICALLY UNLESS OTHERWISE NOTED.

D. COORDINATE PARTITION FIRE RATED REQUIREMENTS AS INDICATED ON REFLECTED CEILING PLANS - DRAWING SERIES A700.

E. TYPICALLY INSTALL SOAP DISPENSERS AND PAPER TOWEL DISPENSER AT ALL SINKS UNLESS NOTED OTHERWISE.

F. PROVIDE WALL REINFORCEMENT PER DETAIL 7A/A202 AT WALL-MOUNTED SHELVES AND STORAGE UNITS, MARKER BOARDS, BULLETIN BOARDS, TACK BOARDS, TELEVISIONS AND OTHER CONTRACTOR OR OWNER FURNISHED WALL-MOUNTED ITEMS.

G. FOR ALL CARPET TYPE CHANGES BETWEEN ROOMS, TRANSITION SHALL OCCUR AT CENTERLINE OF DOOR PANEL TYPICALLY - U.N.O. SEE DWG 2A/A600.

H. COORDINATE DIMENSIONS W/ ASTERISK (IE - "X" X") W/ EQUIPMENT VENDOR.

I. PROVIDE BULLNOSE ON ALL CMU OUTSIDE CORNERS - TYPICAL.

J. FOR INTERIOR METAL STUD CONSTRUCTION ALL DIMENSIONS ARE TO FACE OF METAL STUDS UNLESS NOTED OTHERWISE.

K. FOR WOOD CONSTRUCTION ALL DIMENSIONS ARE TO EXTERIOR FACE OF SHEATHING AND CENTERLINE OF STUDS UNLESS NOTED OTHERWISE.

L. ALL DIMENSIONS INDICATED AS 'CLEAR' ARE TO FACE OF FINISH (GYPSUM, TILE, ETC.).

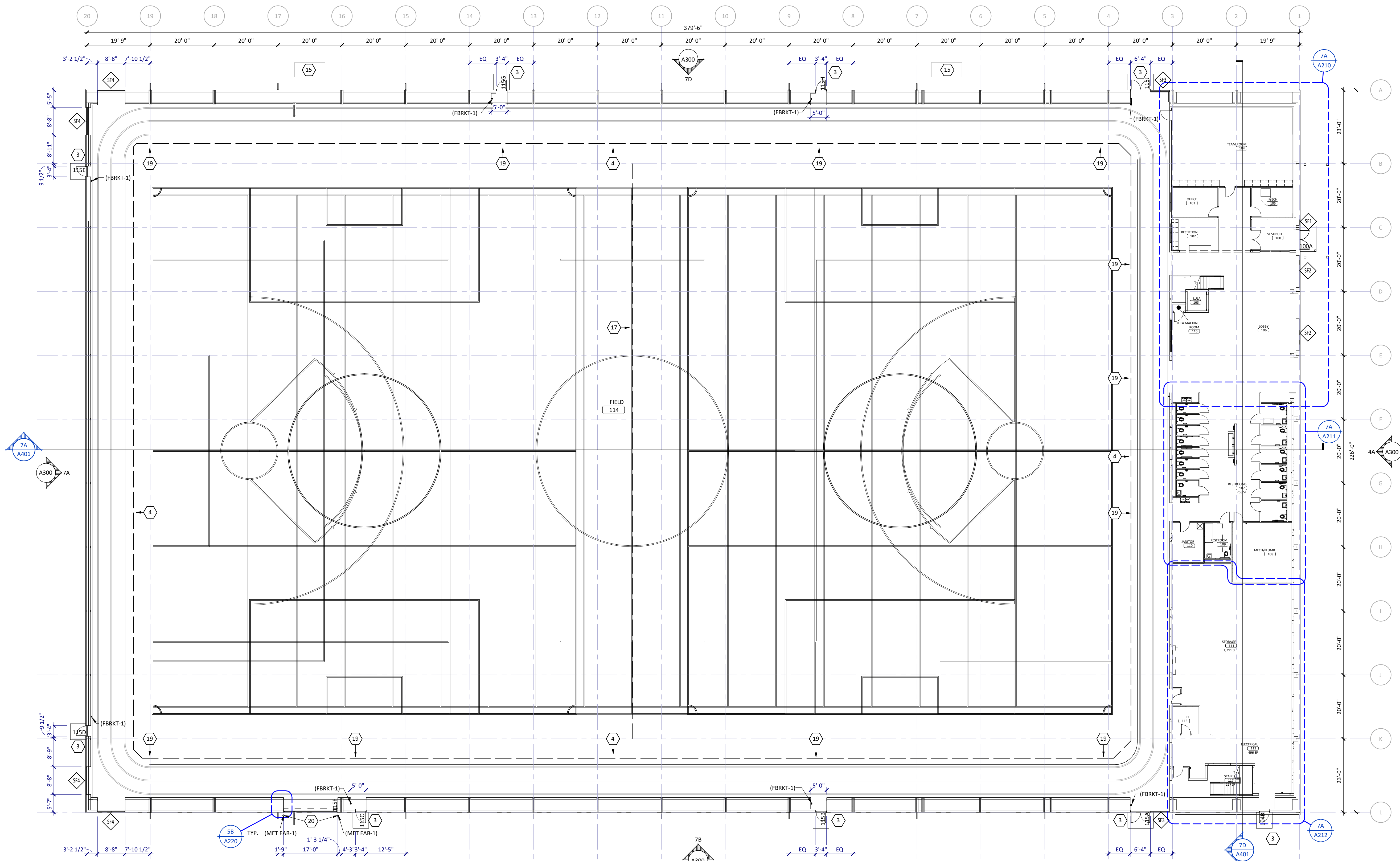
M. ALL MASONRY DIMENSIONS ARE TO FACE OF MASONRY UNLESS NOTED OTHERWISE.

N. ALL EXTERIOR OPENING DIMENSIONS ARE ROUGH OPENINGS.

O. COORDINATE ALL FLOOR OPENING DIMENSIONS AND CLEARANCES FOR DUCTWORK W/ MECHANICAL CONTRACTOR - TYPICAL.

P. COORDINATE AND/OR CONFIRM ANY DIMENSIONAL DISCREPANCIES WITH ARCHITECT PRIOR TO INSTALLATION.

| REVISION SCHEDULE | | |
|-------------------|-------------|------|
| NO. | DESCRIPTION | DATE |



ST. CLOUD SCHOOL DISTRICT
742 MULTIPURPOSE ATHLETIC FACILITY
ST. CLOUD, MN

| | |
|------------------|-------------|
| DATE | 10/20/2025 |
| PHASE | BID PACK #1 |
| PROJECT | 19230.03 |
| SHEET | A200 |
| FIRST FLOOR PLAN | |

| KEYNOTES - FLOOR PLAN | |
|-----------------------|---|
| NO | NOTE |
| 1 | ADA DOOR PUSH PLATE, WALL-MOUNTED - SEE ELEVATION. CONNECTED TO LOW-ENERGY SWING DOOR OPERATOR; SEE ELECTRICAL. |
| 2 | ADA SLIM VESTIBULE PUSH PLATE, MULLION-MOUNTED - SEE ELEVATION. SEE ELECTRICAL. |
| 3 | EXTERIOR STOOP; SEE STRUCTURAL. |
| 4 | KNOTLESS NYLON NETTING SUPPORTED BY PEFS FRAME |
| 5 | STAINLESS STEEL BOLLARD WITH ADA DOOR PUSH PLATE; SEE ELECTRICAL. |
| 7 | ICE MACHINE BY OWNER. |
| 8 | REFRIGERATOR BY OWNER. |
| 9 | PROVIDE (FRP-1) FOR 48" AT EACH SIDE OF BASIN AND PROVIDE (MOP-1), REFER TO MOUNTING HEIGHT SHEETS |
| 11 | H-LD DRINKING FOUNTAIN WITH BOTTLE FILLER |
| 13 | VENDING MACHINES BY OWNER. |
| 14 | LIMITED-USE/LIMITED APPLICATION ELEVATOR |
| 15 | ARU - SEE MECHANICAL. |
| 16 | AG WALL EXTENDS UP TO STRUCTURE ABOVE - SEE STRUCTURAL FOR CONNECTION |
| 17 | KNOTLESS NYLON DIVIDER CURTAIN SUPPORTED BY PEFS FRAME |
| 18 | BATTING CAGE COLUMN |
| 19 | OVERLAPPED NETTING FOR ENTRY/EXIT |

GENERAL NOTES - FLOOR PLAN

A. FOR TYPICAL BARRIER FREE TOILET ROOM TYPES AND ACCESSORIES REQUIREMENTS AND LOCATIONS SEE DWG G120

B. FOR TYPICAL HOUSEKEEPING CLOSETS ACCESSORIES REQUIREMENTS AND MOUNTING LOCATIONS SEE DWG G120

C. ALL PARTITION TYPES ARE "A4" TYPICALLY UNLESS OTHERWISE NOTED.

D. COORDINATE PARTITION FIRE RATED REQUIREMENTS AS INDICATED ON REFLECTED CEILING PLANS - DRAWING SERIES A700.

E. TYPICALLY INSTALL SOAP DISPENSERS AND PAPER TOWEL DISPENSER AT ALL SINKS UNLESS NOTED OTHERWISE.

F. PROVIDE WALL REINFORCEMENT PER DETAIL 7A/A20 AT WALL-MOUNTED SHELVES AND STORAGE UNITS, MARKER BOARDS, BULLETIN BOARDS, TACK BOARDS, TELEVISIONS AND OTHER CONTRACTOR OR OWNER FURNISHED WALL-MOUNTED ITEMS.

G. FOR ALL CARPET TYPE CHANGES BETWEEN ROOMS, TRANSITION SHALL OCCUR AT CENTERLINE OF DOOR PANEL TYPICALLY - U.N.O. SEE DWG 2A/A600.

H. COORDINATE DIMENSIONS W/ ASTERISK (IE - "X-X") W/ EQUIPMENT VENDOR.

I. PROVIDE BULLNOSE ON ALL CMU OUTSIDE CORNERS - TYPICAL.

J. FOR INTERIOR METAL STUD CONSTRUCTION ALL DIMENSIONS ARE TO FACE OF METAL STUDS UNLESS NOTED OTHERWISE.

K. FOR WOOD CONSTRUCTION ALL DIMENSIONS ARE TO EXTERIOR FACE OF SHEATHING AND CENTERLINE OF STUDS UNLESS NOTED OTHERWISE.

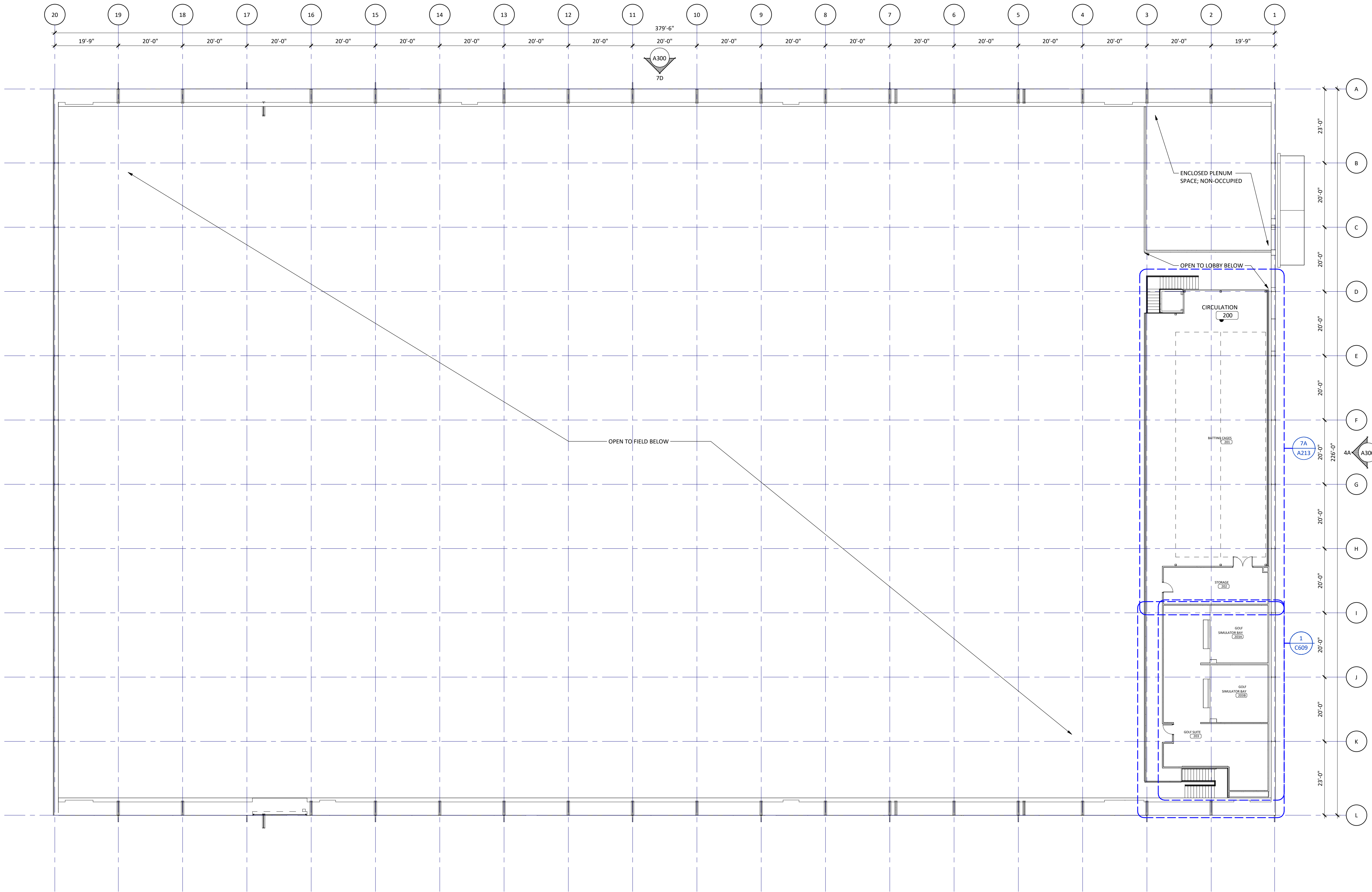
L. ALL DIMENSIONS INDICATED AS 'CLEAR' ARE TO FACE OF FINISH (GYPSUM, TILE, ETC.).

M. ALL MASONRY DIMENSIONS ARE TO FACE OF MASONRY UNLESS NOTED OTHERWISE.

N. ALL EXTERIOR OPENING DIMENSIONS ARE ROUGH OPENINGS.

O. COORDINATE ALL FLOOR OPENING DIMENSIONS AND CLEARANCES FOR DUCTWORK W/ MECHANICAL CONTRACTOR - TYPICAL.

P. COORDINATE AND/OR CONFIRM ANY DIMENSIONAL DISCREPANCIES WITH ARCHITECT PRIOR TO INSTALLATION.



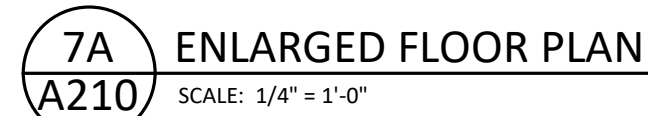
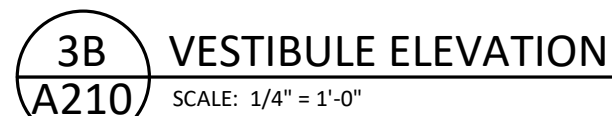
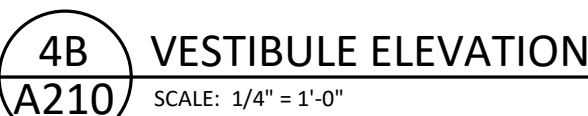
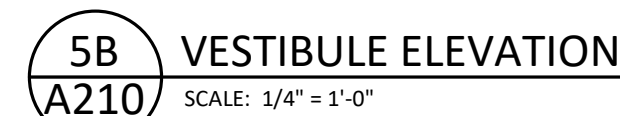
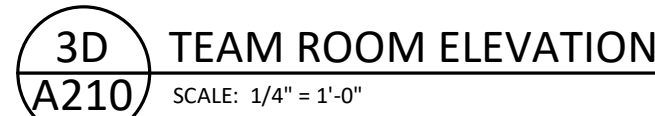
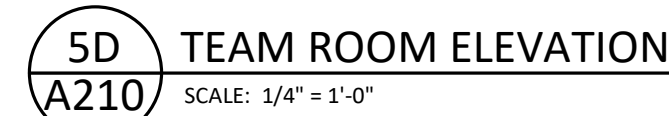
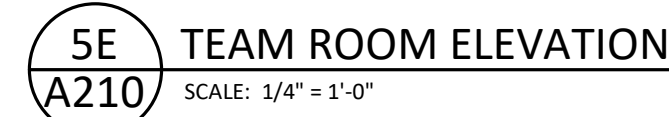


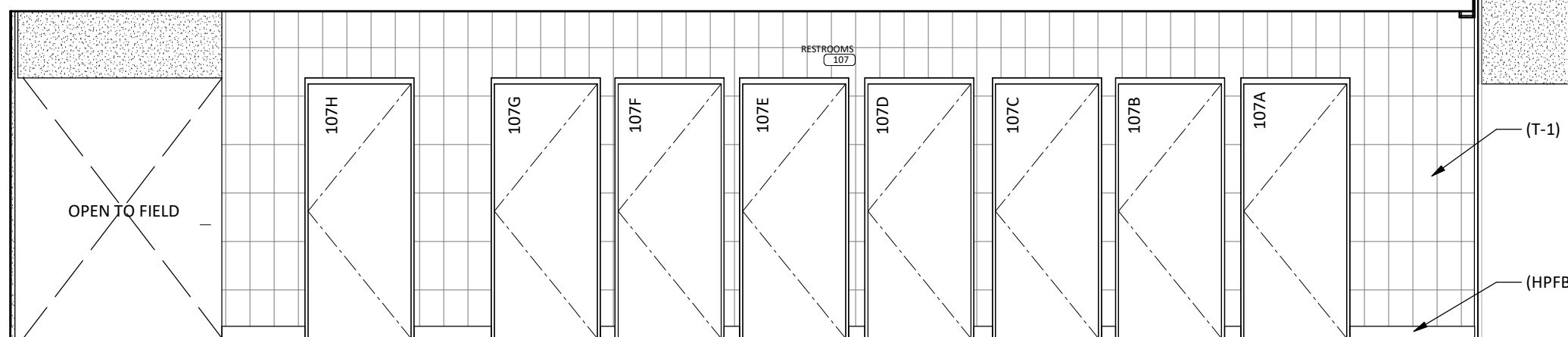
| REVISION SCHEDULE | | |
|-------------------|-------------|------|
| NO. | DESCRIPTION | DATE |

GENERAL NOTES - FLOOR PLAN

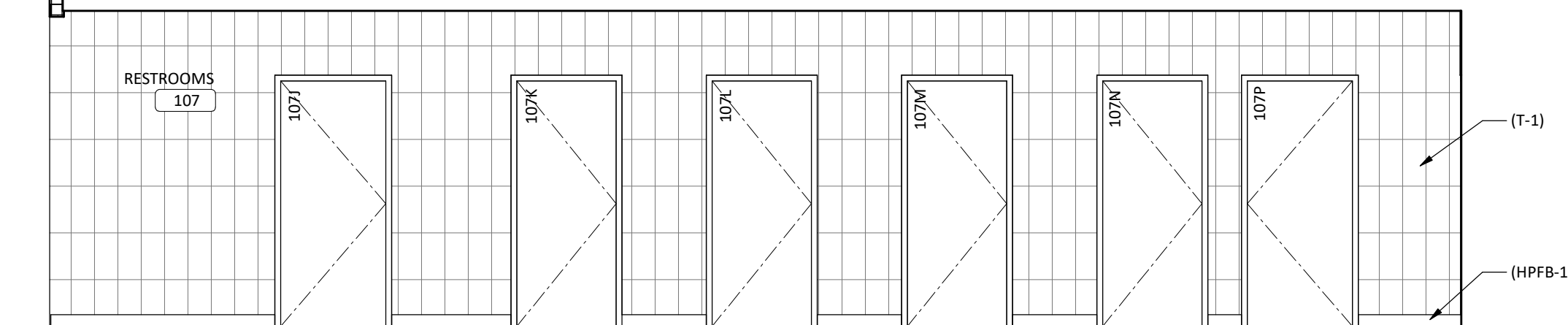
| KEYNOTES - INTERIOR ELEV. | | |
|---------------------------|--|------|
| NO | NOTE | REV. |
| 1 | DISPLAY BY OWNER. PROVIDE BLOCKING AS NEEDED. POWER BY ELECTRICAL. SEE ELECTRICAL FOR MOUNTING HEIGHTS | |
| 2 | WHITEBOARD BY OWNER. PROVIDE BLOCKING AS NEEDED. | |
| 3 | MANUFACTURER STANDARD TENSIONED FABRIC - COLOR 1 (WHITE) | |
| 4 | MANUFACTURER STANDARD TENSIONED FABRIC - COLOR 2 (GREY) | |
| 5 | SCOREBOARD; PROVIDE POWER, DATA AND BLOCKING. | |
| 7 | MANUFACTURER STANDARD TENSIONED FABRIC - COLOR 3 (DARK GREY) | |
| 8 | GATE | |

- A. REFER TO A620 FLOOR STANDARD CASEWORK ELEVATIONS AND CONSTRUCTION.
- B. ALL WALL SURFACES TO BE (PT-7) UNLESS NOTED OTHERWISE.**
- C. PROVIDE LEVEL '5' DRYWALL FINISH AT ALL APPLIED GRAPHICS AND WRITABLE WALL SURFACE LOCATIONS.
- D. PROVIDE WALL REINFORCEMENT AT ALL WALL MOUNTED ITEMS.
- E. ANY EXPOSED CABINET EDGE SHALL BE FINISHED EDGE TO MATCH ADJACENT CABINET FINISH.
- F. PAINT ALL EXPOSED (VISIBLE) DUCTWORK ABOVE THE CEILING LINE OF CLOUDS **(PT-7)**.
- G. SEE SHEET G120 FOR ALL TOILET RIM HEIGHTS AND ACCESSORY MOUNTING HEIGHTS.

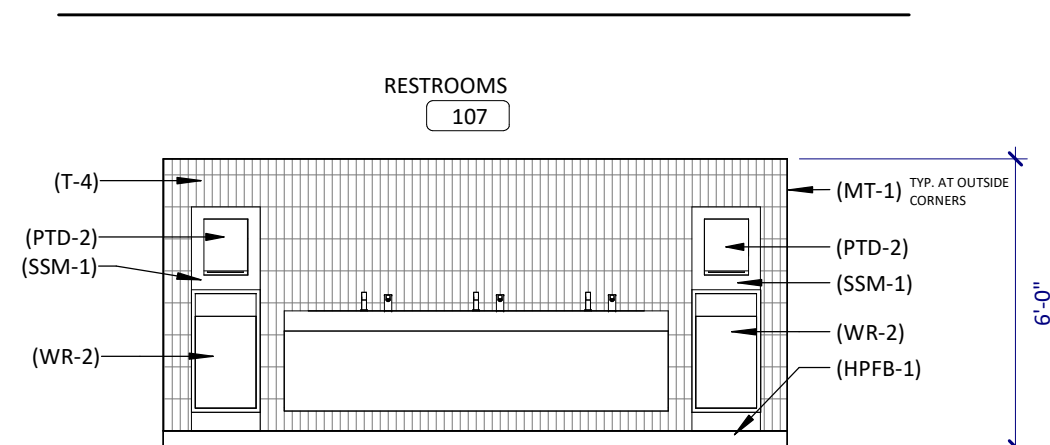




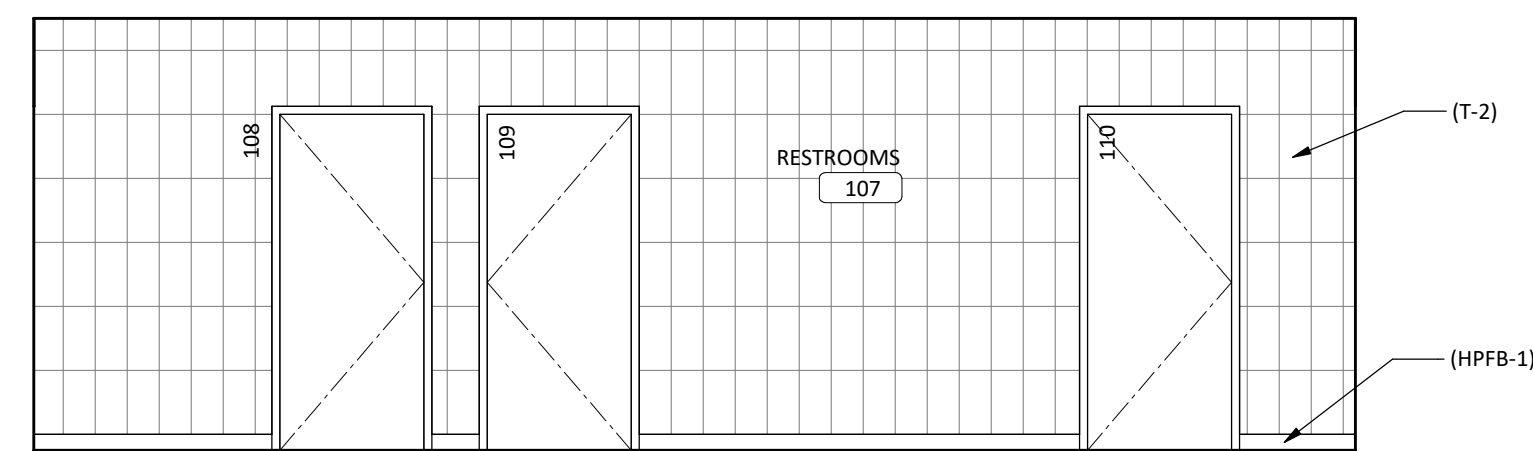
7F RESTROOMS ELEVATION
SCALE: 1/4" = 1'-0"



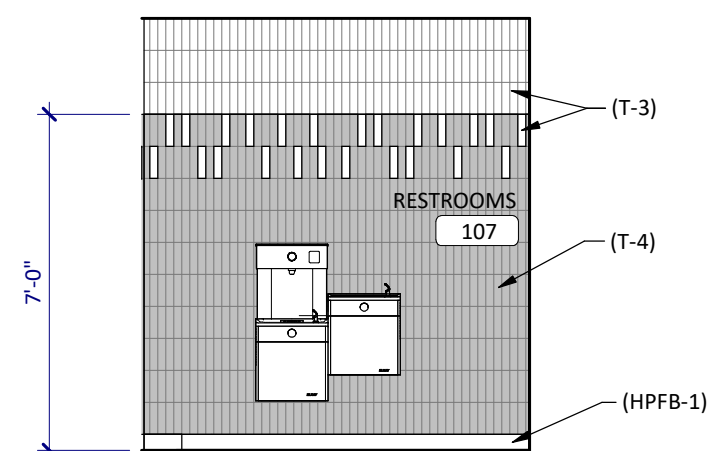
5F RESTROOMS ELEVATION
SCALE: 1/4" = 1'-0"



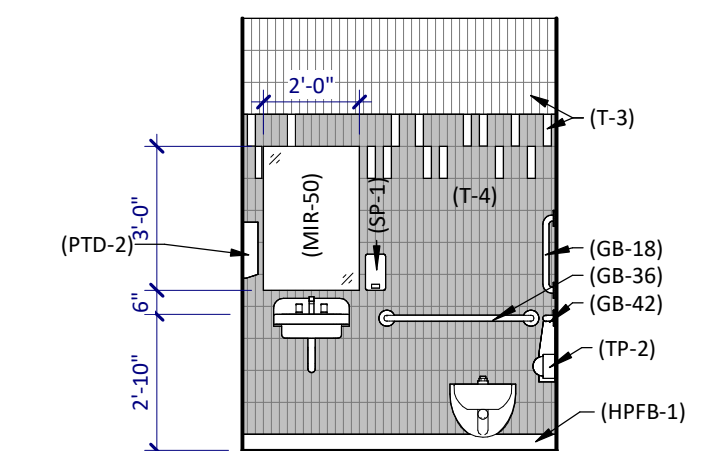
3F RESTROOMS LAV ELEVATION
SCALE: 1/4" = 1'-0"



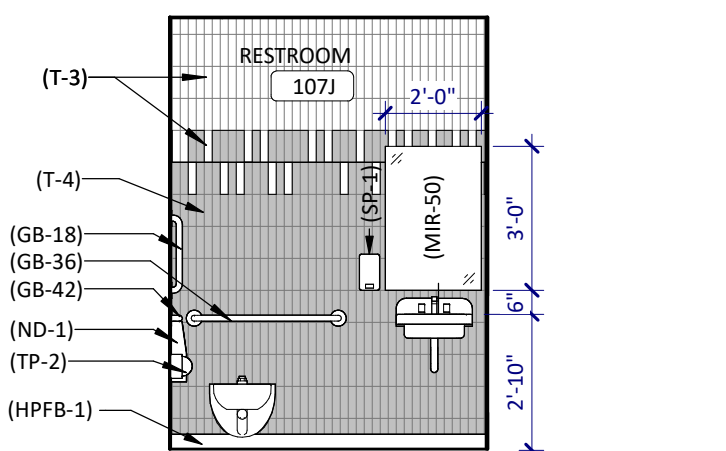
7E RESTROOMS ELEVATION
SCALE: 1/4" = 1'-0"



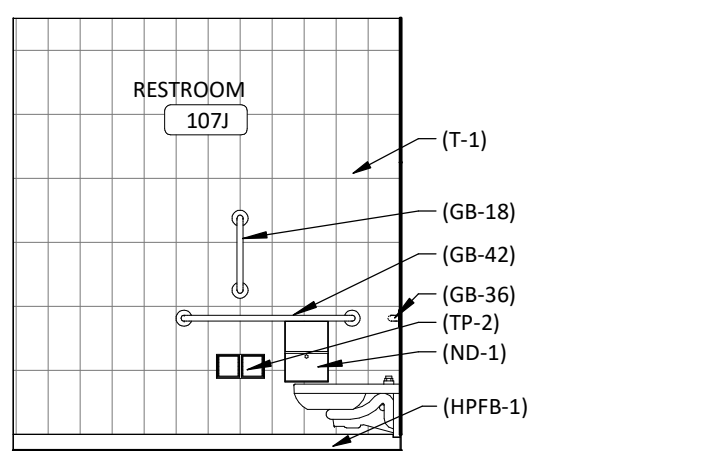
6E WATER FOUNTAIN ELEVATION
SCALE: 1/4" = 1'-0"



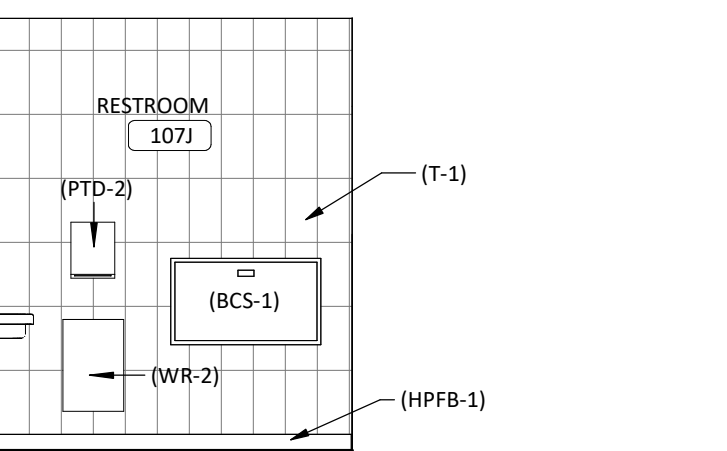
5E ACCS TOILET RM ELEV - MEN
SCALE: 1/4" = 1'-0"



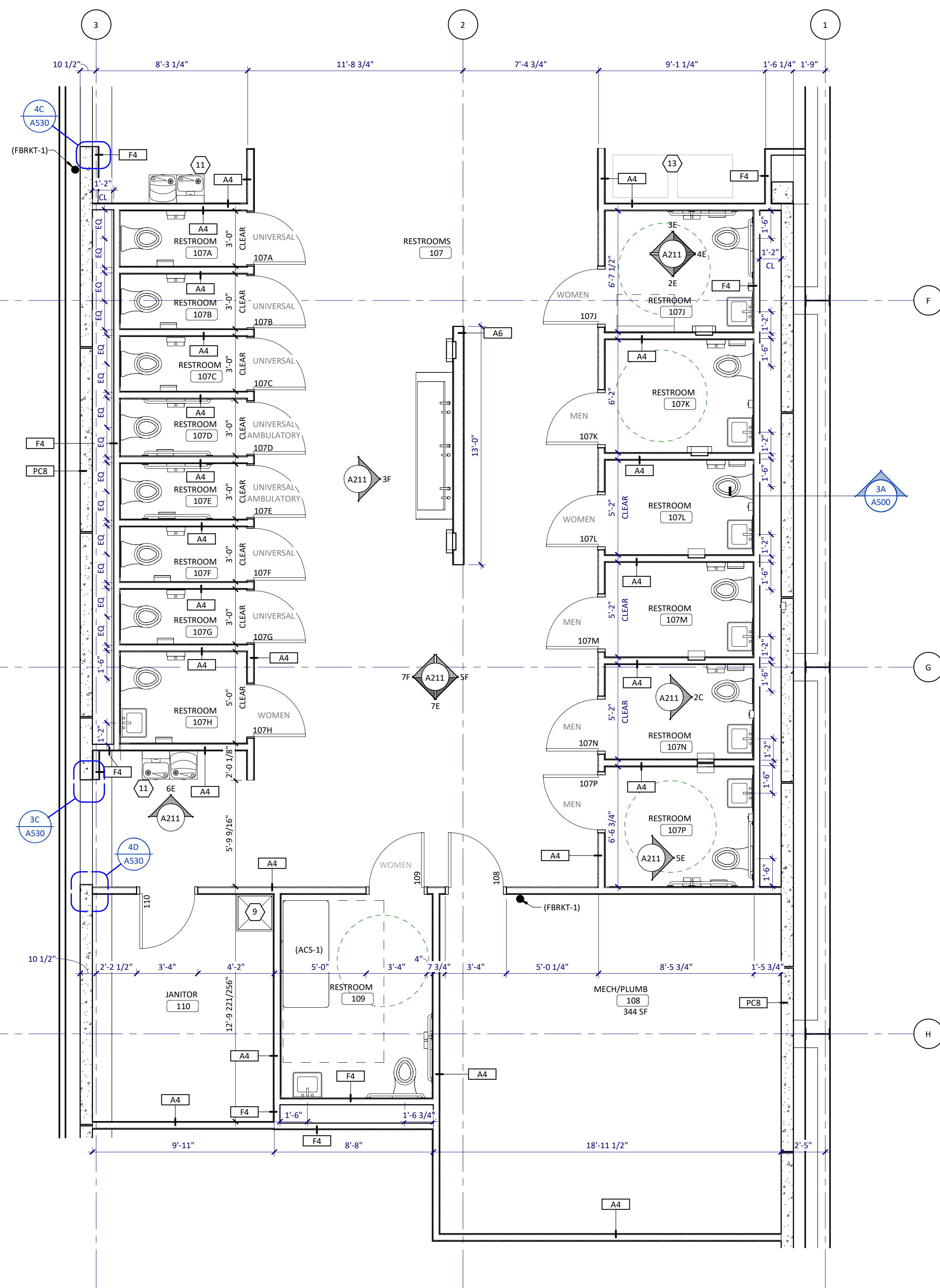
4E ACCS TOILET RM ELEV - WOMEN
SCALE: 1/4" = 1'-0"



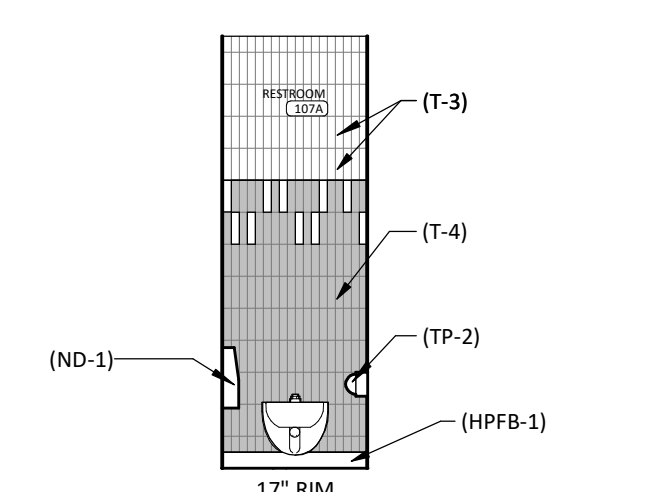
3E ACCS TOILET RM ELEV, TYP.
SCALE: 1/4" = 1'-0"



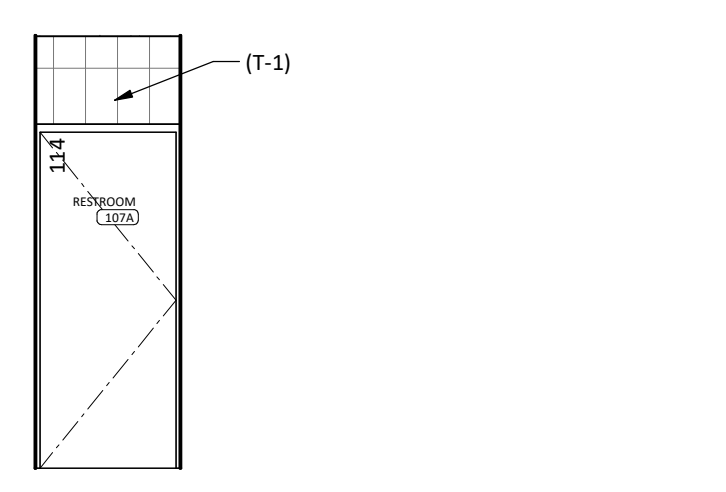
2E ACCS TOILET RM ELEV, TYP.
SCALE: 1/4" = 1'-0"



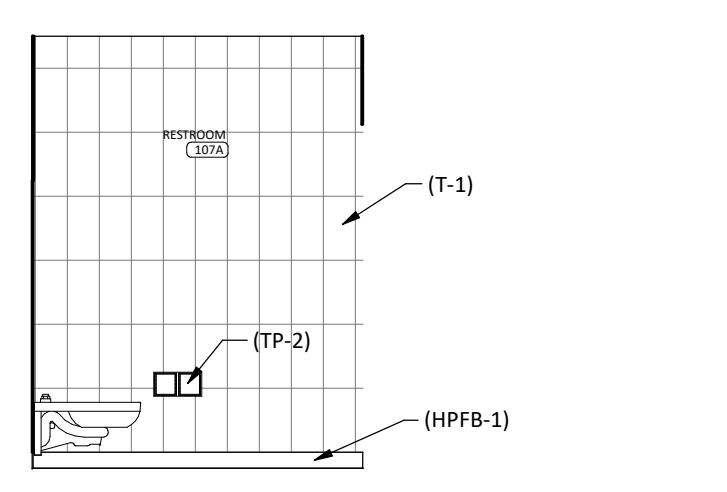
7A ENLARGED RESTROOMS
SCALE: 1/4" = 1'-0"



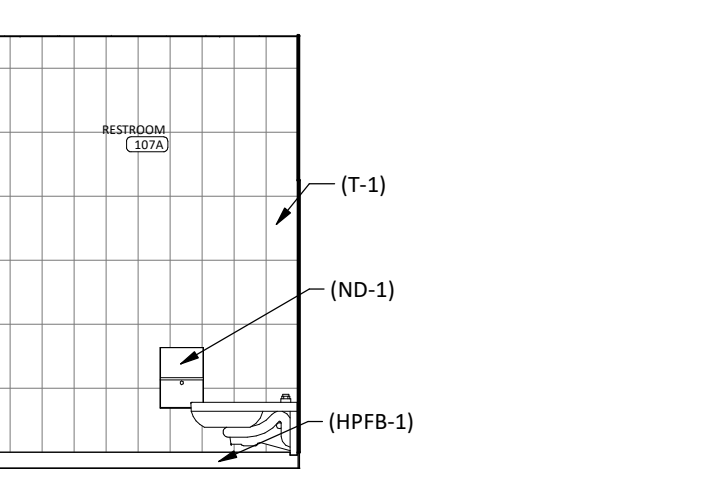
5D UNIV TOILET RM ELEV
SCALE: 1/4" = 1'-0"



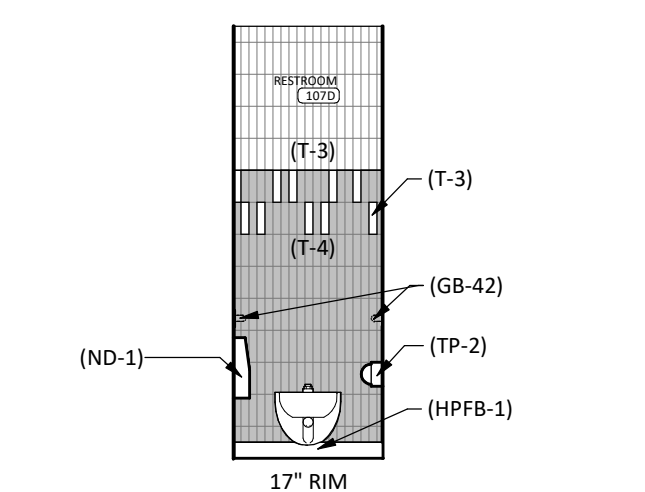
4D UNIV TOILET RM ELEV
SCALE: 1/4" = 1'-0"



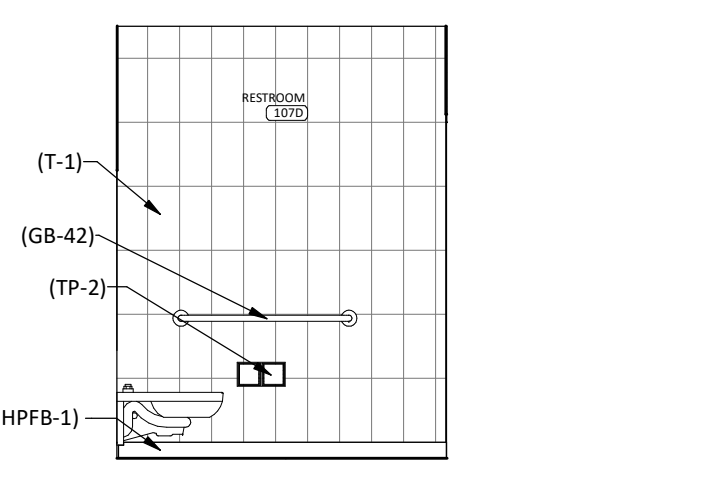
3D UNIV TOILET RM ELEV
SCALE: 1/4" = 1'-0"



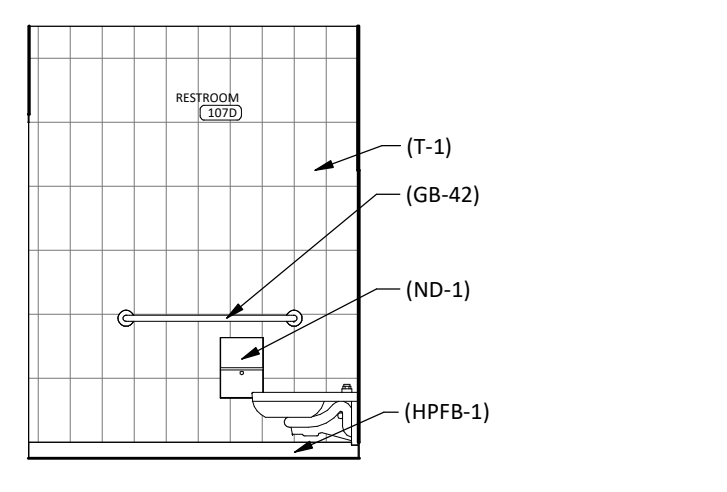
2D UNIV TOILET RM ELEV
SCALE: 1/4" = 1'-0"



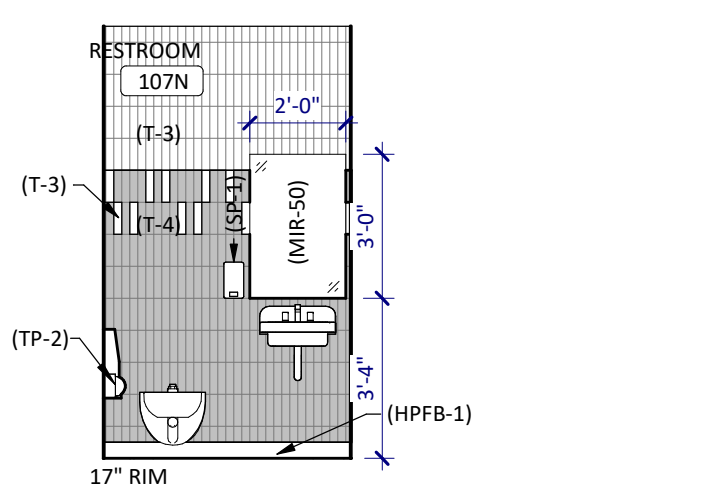
5C AMB TOILET ELEV, TYP.
SCALE: 1/4" = 1'-0"



4C AMB TOILET ELEV, TYP.
SCALE: 1/4" = 1'-0"



3C AMB TOILET ELEV, TYP.
SCALE: 1/4" = 1'-0"



2C RESTROOM ELEV
SCALE: 1/4" = 1'-0"

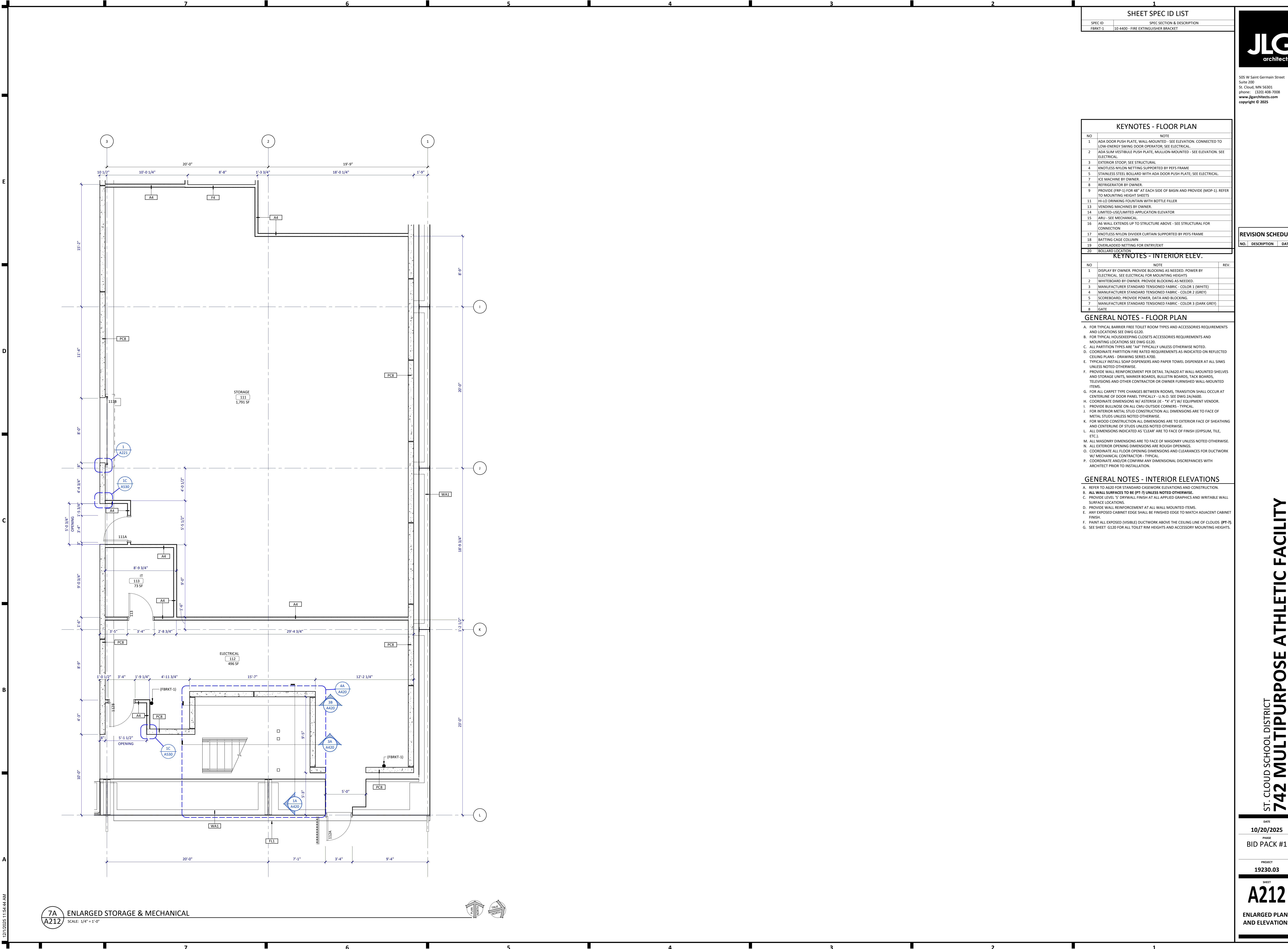
| SHEET SPEC ID LIST | |
|--------------------|---|
| SPEC ID | SPEC SECTION & DESCRIPTION |
| ACS-1 | 10 2800 - ADULT CHANGING STATION |
| BCS-1 | 10 2800 - BABY CHANGING STATION; POLYETHYLENE |
| FBKRT-1 | 10 4400 - FIRE EXTINGUISHER BRACKET |
| GB-18 | 10 2800 - GRAB BAR, 18 INCHES |
| GB-36 | 10 2800 - GRAB BAR, 36 INCHES |
| GB-42 | 10 2800 - GRAB BAR, 42 INCHES |
| HPFB-1 | 09 6700 - HIGH PERFORMANCE FLOORING BASE |
| MIR-50 | 10 2800 - MIRROR; FRAMELESS |
| MT-1 | 09 3000 - TILE TRIM |
| ND-1 | 10 2800 - SANITARY NAPKIN DISPOSAL |
| PTD-2 | 10 2800 - PAPER TOWEL DISPENSER; ROLL TYPE |
| SP-1 | 10 2800 - SOAP DISPENSER; WALL MOUNT |
| SSM-1 | 12 3600 - SOLID SURFACE COUNTERTOP |
| T-1 | 09 3000 - TILE |
| T-2 | 09 3000 - TILE |
| T-3 | 09 3000 - TILE |
| T-4 | 09 3000 - TILE |
| TP-2 | 10 2800 - TOILET PAPER DISPENSER; DOUBLE ROLL |
| WR-2 | 10 2800 - WASTE RECEPTACLE, RECESSED |

| KEYNOTES - FLOOR PLAN | |
|-----------------------|---|
| NO | NOTE |
| 1 | ADA DOOR PUSH PLATE, WALL-MOUNTED - SEE ELEVATION. CONNECTED TO LOW-ENERGY SWING DOOR OPERATOR; SEE ELECTRICAL. |
| 2 | ADA SUN VESTIBULE PUSH PLATE, MULLION-MOUNTED - SEE ELEVATION. SEE ELECTRICAL. |
| 3 | EXTERIOR STOOP; SEE STRUCTURAL |
| 4 | KNOTLESS NYLON NETTING SUPPORTED BY PEFS FRAME |
| 5 | STAINLESS STEEL BOLLARD WITH ADA DOOR PUSH PLATE; SEE ELECTRICAL. |
| 7 | ICE MACHINE BY OWNER. |
| 8 | REFRIGERATOR BY OWNER. |
| 9 | PROVIDE (FRP-1) FOR 48" AT EACH SIDE OF BASIN AND PROVIDE (MOP-1). REFER TO MOUNTING HEIGHT SHEETS |
| 11 | H-I/O DRINKING FOUNTAIN WITH BOTTLE FILLER |
| 13 | VENDING MACHINES BY OWNER. |
| 14 | LIMITED-USE/LIMITED APPLICATION ELEVATOR |
| 15 | ARIJ - SEE MECHANICAL. |
| 16 | AS WALL EXTENDS UP TO STRUCTURE ABOVE - SEE STRUCTURAL FOR CONNECTION |
| 17 | KNOTLESS NYLON DIVIDER CURTAIN SUPPORTED BY PEFS FRAME |
| 18 | BATTING CASE COLUMN |
| 19 | OVERLAPPED NETTING FOR ENTRY/EXIT |
| 20 | BOLLARD LOCATION |

- GENERAL NOTES - FLOOR PLAN**
- A. FOR TYPICAL BARRIER FREE TOILET ROOM TYPES AND ACCESSORIES REQUIREMENTS AND LOCATIONS SEE DWG G120.
 - B. FOR TYPICAL HOUSEKEEPING CLOSETS ACCESSORIES REQUIREMENTS AND MOUNTING LOCATIONS SEE DWG G120.
 - C. ALL PARTITION TYPES ARE "A4" TYPICALLY UNLESS OTHERWISE NOTED.
 - D. COORDINATE PARTITION FIRE RATED REQUIREMENTS AS INDICATED ON REFLECTED CEILING PLANS - DRAWING SERIES A700.
 - E. TYPICALLY INSTALL SOAP DISPENSERS AND PAPER TOWEL DISPENSER AT ALL SINKS UNLESS NOTED OTHERWISE.
 - F. PROVIDE WALL REINFORCEMENT PER DETAIL 7A/A620 AT WALL-MOUNTED SHELVES AND STORAGE UNITS, MARKER BOARDS, BULLETIN BOARDS, TACK BOARDS, TELEVISIONS AND OTHER CONTRACTOR OR OWNER FURNISHED WALL-MOUNTED ITEMS.
 - G. FOR ALL CARPET TYPE CHANGES BETWEEN ROOMS, TRANSITION SHALL OCCUR AT CENTERLINE OF DOOR PANEL TYPICALLY - U.N.O. SEE DWG 2A/A600.
 - H. COORDINATE DIMENSIONS W/ ASTERISK (IE "X" X "Y") W/ EQUIPMENT VENDOR.
 - I. PROVIDE BULLNOSE ON ALL CMU OUTSIDE CORNERS - TYPICAL.
 - J. FOR INTERIOR METAL STUD CONSTRUCTION ALL DIMENSIONS ARE TO FACE OF METAL STUDS UNLESS NOTED OTHERWISE.
 - K. FOR WOOD CONSTRUCTION ALL DIMENSIONS ARE TO EXTERIOR FACE OF SHEATHING AND CENTERLINE OF STUDS UNLESS NOTED OTHERWISE.
 - L. ALL DIMENSIONS INDICATED AS "CLEAR" ARE TO FACE OF FINISH (GYPSUM, TILE, ETC.).
 - M. ALL MASONRY DIMENSIONS ARE TO FACE OF MASONRY UNLESS NOTED OTHERWISE.
 - N. ALL EXTERIOR OPENING DIMENSIONS ARE ROUGH OPENINGS.
 - O. COORDINATE ALL FLOOR OPENING DIMENSIONS AND CLEARANCES FOR DUCTWORK W/ MECHANICAL CONTRACTOR - TYPICAL.
 - P. COORDINATE AND/OR CONFIRM ANY DIMENSIONAL DISCREPANCIES WITH ARCHITECT PRIOR TO INSTALLATION.

| KEYNOTES - INTERIOR ELEV. | | |
|---------------------------|--|------|
| NO | NOTE | REV. |
| 1 | DISPLAY BY OWNER. PROVIDE BLOCKING AS NEEDED. POWER BY ELECTRICAL. SEE ELECTRICAL FOR MOUNTING HEIGHTS | |
| 2 | WHITEBOARD BY OWNER. PROVIDE BLOCKING AS NEEDED. | |
| 3 | MANUFACTURER STANDARD TENSIONED FABRIC - COLOR 1 (WHITE) | |
| 4 | MANUFACTURER STANDARD TENSIONED FABRIC - COLOR 2 (GREY) | |
| 5 | SCOREBOARD; PROVIDE POWER, DATA AND BLOCKING. | |
| 7 | MANUFACTURER STANDARD TENSIONED FABRIC - COLOR 3 (DARK GREY) | |
| 8 | GATE | |

- GENERAL NOTES - INTERIOR ELEVATIONS**
- A. REFER TO A620 FOR STANDARD CASEWORK ELEVATIONS AND CONSTRUCTION.
 - B. ALL WALL SURFACES TO BE (PT-7) UNLESS NOTED OTHERWISE.
 - C. PROVIDE LEVEL "S" DRYWALL FINISH AT ALL APPLIED GRAPHICS AND WRITABLE WALL SURFACE LOCATIONS.
 - D. PROVIDE WALL REINFORCEMENT AT ALL WALL MOUNTED ITEMS.
 - E. ANY EXPOSED CABINET EDGE SHALL BE FINISHED EDGE TO MATCH ADJACENT CABINET FINISH.
 - F. PAINT ALL EXPOSED (VISIBLE) DUCTWORK ABOVE THE CEILING LINE OF CLOUDS (PT-7).
 - G. SEE SHEET G120 FOR ALL TOILET RIM HEIGHTS AND ACCESSORY MOUNTING HEIGHTS.



| SHEET SPEC ID LIST | |
|--------------------|-------------------------------------|
| SPEC ID | SPEC SECTION & DESCRIPTION |
| FBRT-1 | 10 4400 - FIRE EXTINGUISHER BRACKET |

| KEYNOTES - FLOOR PLAN | |
|-----------------------|---|
| NO | NOTE |
| 1 | ADA DOOR PUSH PLATE, WALL-MOUNTED - SEE ELEVATION. CONNECTED TO LOW-ENERGY SWING DOOR OPERATOR; SEE ELECTRICAL. |
| 2 | ADA SIGN VESTIBULE PUSH PLATE, MULLION-MOUNTED - SEE ELEVATION. SEE ELECTRICAL. |
| 3 | EXTERIOR STOOP; SEE STRUCTURAL. |
| 4 | KNOTLESS NYLON NETTING SUPPORTED BY PEFS FRAME. |
| 5 | STAINLESS STEEL BOLLARD WITH ADA DOOR PUSH PLATE; SEE ELECTRICAL. |
| 7 | ICE MACHINE BY OWNER. |
| 8 | REFRIGERATOR BY OWNER. |
| 9 | PROVIDE (FRP-1) FOR 48" AT EACH SIDE OF BASIN AND PROVIDE (MOP-1). REFER TO MOUNTING HEIGHT SHEETS. |
| 11 | HI-LO DRINKING FOUNTAIN WITH BOTTLE FILLER. |
| 13 | VENDING MACHINES BY OWNER. |
| 14 | LIMITED-USE/LIMITED APPLICATION ELEVATOR. |
| 15 | ARIU - SEE MECHANICAL. |
| 16 | A6 WALL EXTENDS UP TO STRUCTURE ABOVE - SEE STRUCTURAL FOR CONNECTION. |
| 17 | KNOTLESS NYLON DIVIDER CURTAIN SUPPORTED BY PEFS FRAME. |
| 18 | BATTING CASE COLUMN. |
| 19 | OVERLAPPED NETTING FOR ENTRY/EXIT. |
| 20 | BOLLARD LOCATION. |

| KEYNOTES - INTERIOR ELEV. | | |
|---------------------------|---|------|
| NO | NOTE | REV. |
| 1 | DISPLAY BY OWNER. PROVIDE BLOCKING AS NEEDED. POWER BY ELECTRICAL. SEE ELECTRICAL FOR MOUNTING HEIGHTS. | |
| 2 | WHITEBOARD BY OWNER. PROVIDE BLOCKING AS NEEDED. | |
| 3 | MANUFACTURER STANDARD TENSIONED FABRIC - COLOR 1 (WHITE) | |
| 4 | MANUFACTURER STANDARD TENSIONED FABRIC - COLOR 2 (GREY) | |
| 5 | SCOREBOARD; PROVIDE POWER, DATA AND BLOCKING. | |
| 7 | MANUFACTURER STANDARD TENSIONED FABRIC - COLOR 3 (DARK GREY) | |
| 8 | GATE | |

- GENERAL NOTES - FLOOR PLAN**
- A. FOR TYPICAL BARRIER FREE TOILET ROOM TYPES AND ACCESSORIES REQUIREMENTS AND LOCATIONS SEE DWG G120.
 - B. FOR TYPICAL HOUSEKEEPING CLOSETS ACCESSORIES REQUIREMENTS AND MOUNTING LOCATIONS SEE DWG G120.
 - C. ALL PARTITION TYPES ARE "A4" TYPICALLY UNLESS OTHERWISE NOTED.
 - D. COORDINATE PARTITION FIRE RATED REQUIREMENTS AS INDICATED ON REFLECTED CEILING PLANS - DRAWING SERIES A700.
 - E. TYPICALLY INSTALL SOAP DISPENSERS AND PAPER TOWEL DISPENSER AT ALL SINKS UNLESS NOTED OTHERWISE.
 - F. PROVIDE WALL REINFORCEMENT PER DETAIL 7A/A620 AT WALL-MOUNTED SHELVES AND STORAGE UNITS, MARKER BOARDS, BULLETIN BOARDS, TACK BOARDS, TELEVISIONS AND OTHER CONTRACTOR OR OWNER FURNISHED WALL-MOUNTED ITEMS.
 - G. FOR ALL CARPET TYPE CHANGES BETWEEN ROOMS, TRANSITION SHALL OCCUR AT CENTERLINE OF DOOR PANEL TYPICALLY - U.N.O. SEE DWG 2A/A600.
 - H. COORDINATE DIMENSIONS W/ ASTERISK (IE "X" X" Y") W/ EQUIPMENT VENDOR.
 - I. PROVIDE BULLNOSE ON ALL CMU OUTSIDE CORNERS - TYPICAL.
 - J. FOR INTERIOR METAL STUD CONSTRUCTION ALL DIMENSIONS ARE TO FACE OF METAL STUDS UNLESS NOTED OTHERWISE.
 - K. FOR WOOD CONSTRUCTION ALL DIMENSIONS ARE TO EXTERIOR FACE OF SHEATHING AND CENTERLINE OF STUDS UNLESS NOTED OTHERWISE.
 - L. ALL DIMENSIONS INDICATED AS "CLEAR" ARE TO FACE OF FINISH (GYPSUM, TILE, ETC).
 - M. ALL MASONRY DIMENSIONS ARE TO FACE OF MASONRY UNLESS NOTED OTHERWISE.
 - N. ALL EXTERIOR OPENING DIMENSIONS ARE ROUGH OPENINGS.
 - O. COORDINATE ALL FLOOR OPENING DIMENSIONS AND CLEARANCES FOR DUCTWORK W/ MECHANICAL CONTRACTOR - TYPICAL.
 - P. COORDINATE AND/OR CONFIRM ANY DIMENSIONAL DISCREPANCIES WITH ARCHITECT PRIOR TO INSTALLATION.

- GENERAL NOTES - INTERIOR ELEVATIONS**
- A. REFER TO A620 FOR STANDARD CASEWORK ELEVATIONS AND CONSTRUCTION.
 - B. ALL WALL SURFACES TO BE (PT-7) UNLESS NOTED OTHERWISE.
 - C. PROVIDE LEVEL 5 DRYWALL FINISH AT ALL APPLIED GRAPHICS AND WRITABLE WALL SURFACE LOCATIONS.
 - D. PROVIDE WALL REINFORCEMENT AT ALL WALL MOUNTED ITEMS.
 - E. ANY EXPOSED CABINET EDGE SHALL BE FINISHED EDGE TO MATCH ADJACENT CABINET FINISH.
 - F. PAINT ALL EXPOSED (VISIBLE) DUCTWORK ABOVE THE CEILING LINE OF CLOUDS (PT-7).
 - G. SEE SHEET G120 FOR ALL TOILET RIM HEIGHTS AND ACCESSORY MOUNTING HEIGHTS.

JLGarchitects

505 W Saint Germain Street
Suite 200
St. Cloud, MN 56301
phone: (320) 498-7008
www.jlgarchitects.com
copyright © 2025

| REVISION SCHEDULE | | |
|-------------------|-------------|------|
| NO. | DESCRIPTION | DATE |

ST. CLOUD SCHOOL DISTRICT
742 MULTIPURPOSE ATHLETIC FACILITY
ST. CLOUD, MN

DATE
10/20/2025

PHASE
BID PACK #1

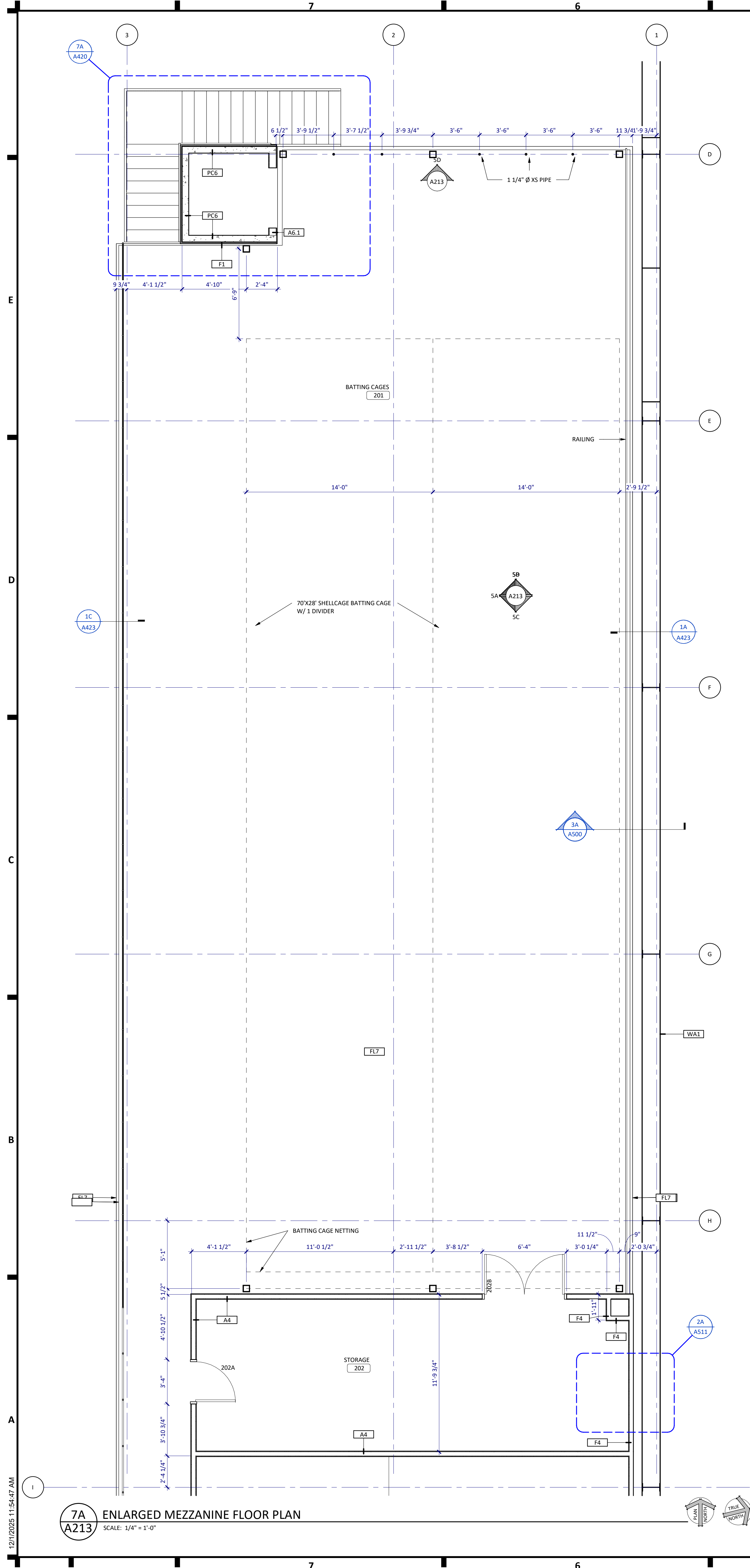
PROJECT
19230.03

SHEET
A212

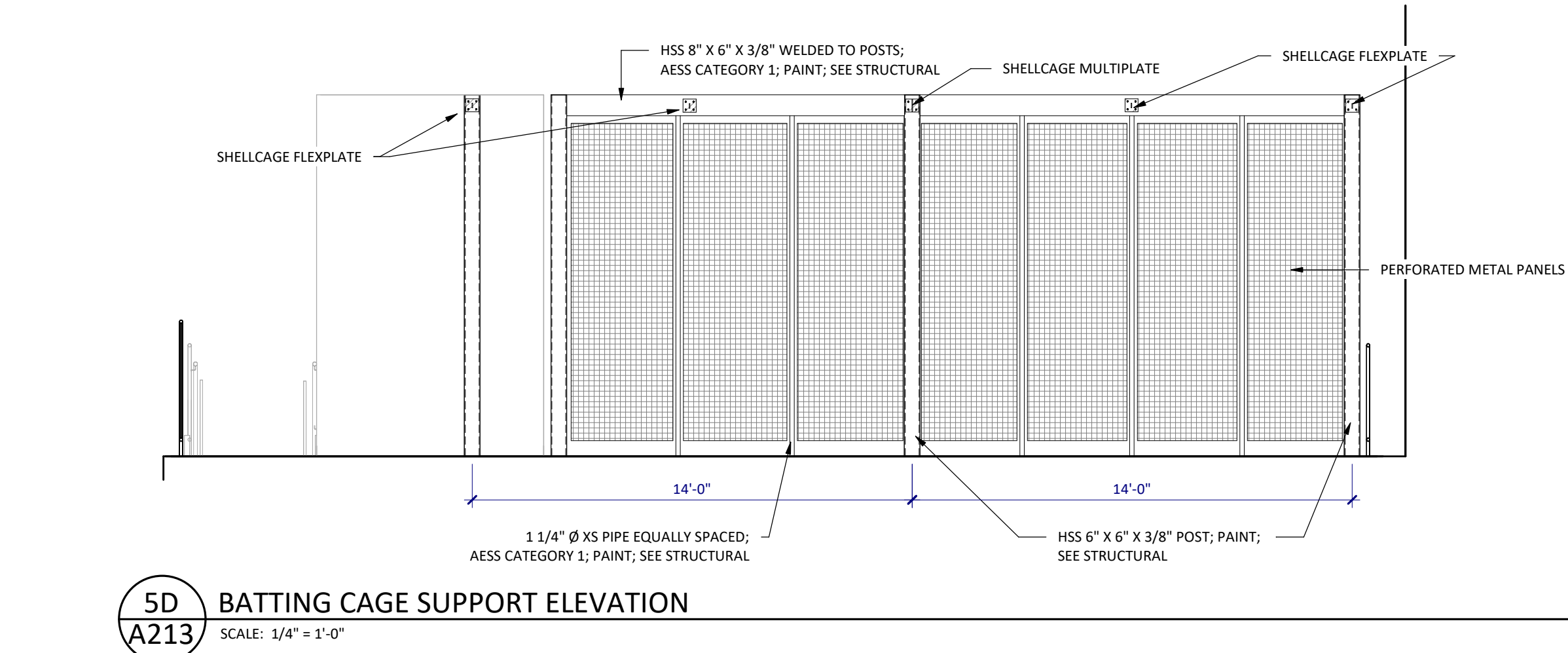
ENLARGED PLANS
AND ELEVATIONS

7A
A212

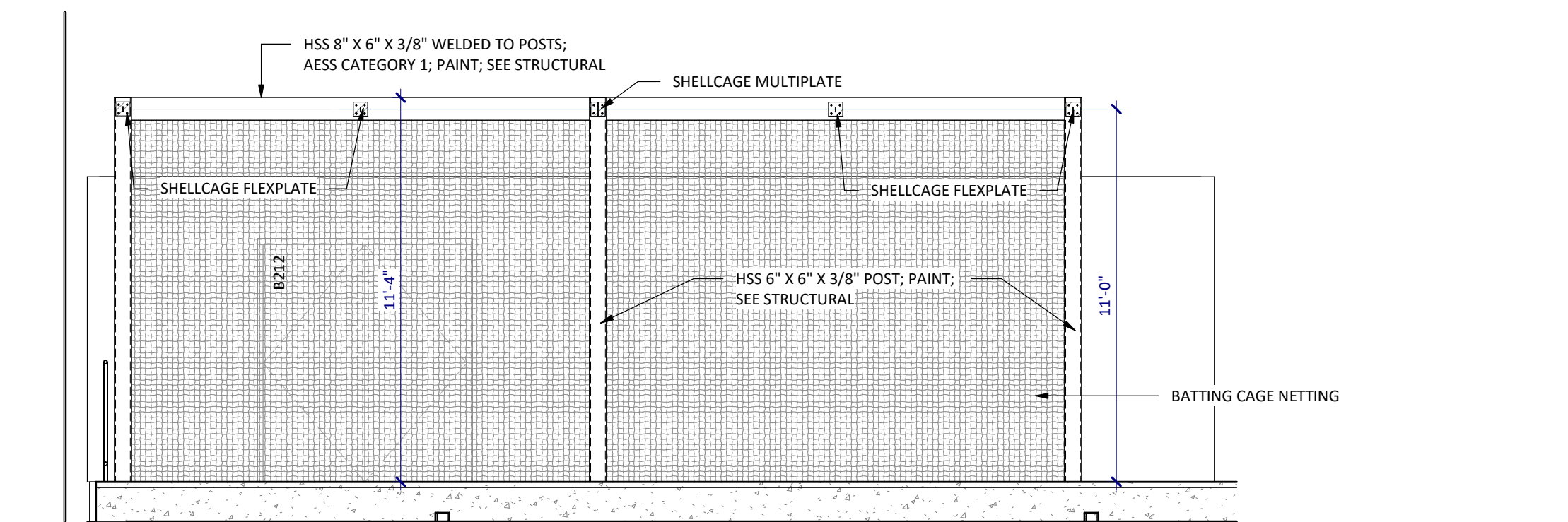
ENLARGED STORAGE & MECHANICAL
SCALE: 1/4" = 1'-0"



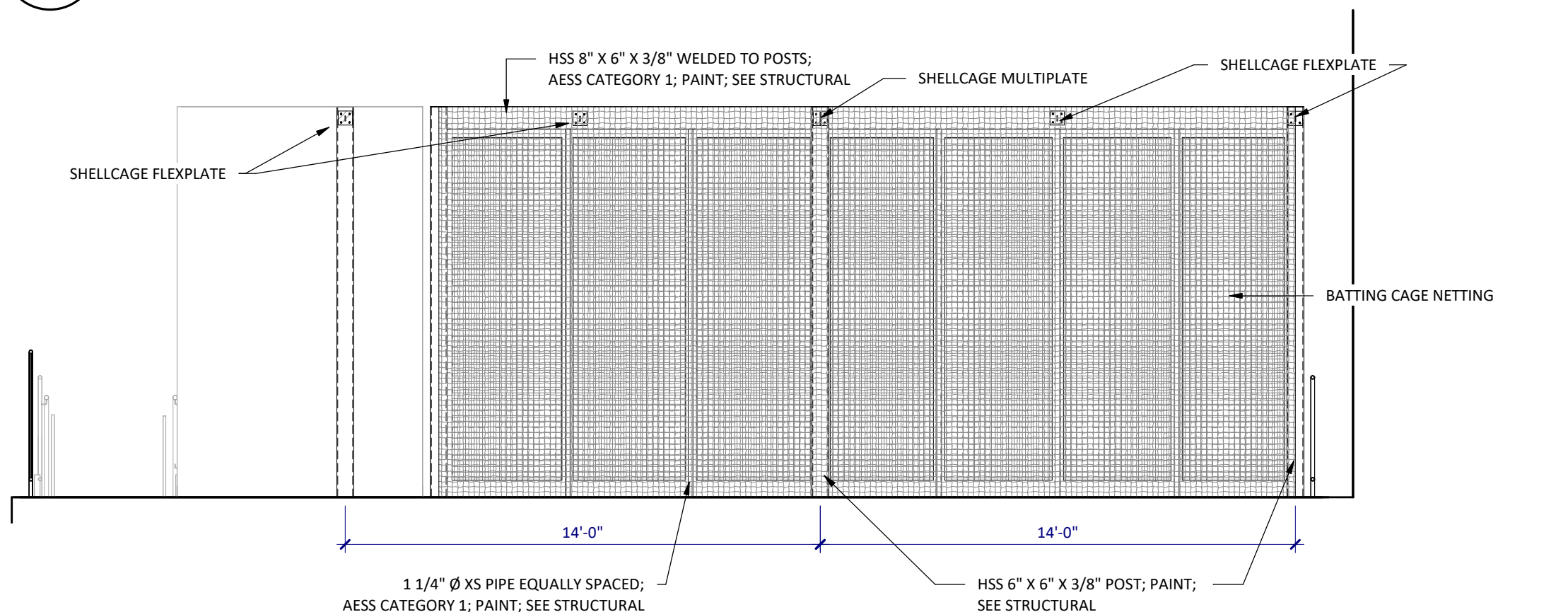
7A
A213
ENLARGED MEZZANINE FLOOR PLAN
SCALE: 1/4" = 1'-0"



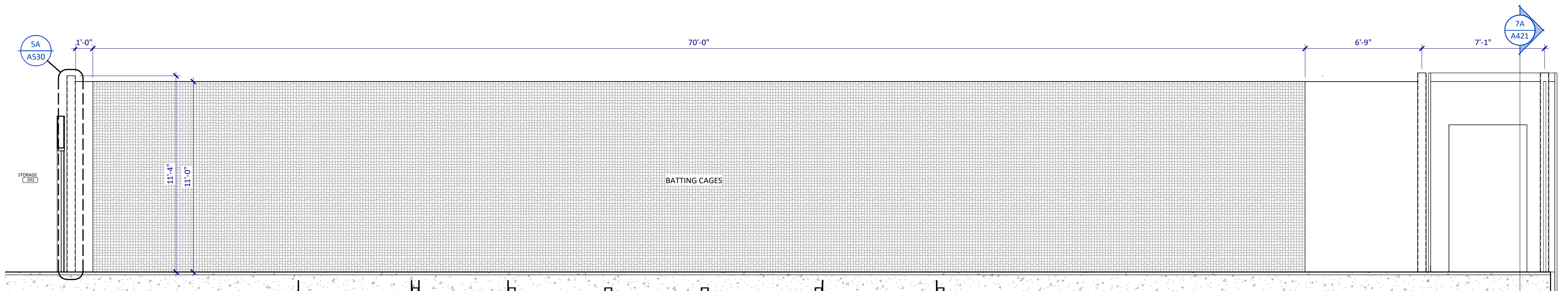
5D
A213
BATTING CAGE SUPPORT ELEVATION
SCALE: 1/4" = 1'-0"



5C
A213
BATTING CAGE ELEVATION - PLAN
SOUTH
SCALE: 1/4" = 1'-0"



5B
A213
BATTING CAGE ELEVATION - PLAN
NORTH
SCALE: 1/4" = 1'-0"



5A
A213
BATTING CAGE SUPPORT ELEVATION
SCALE: 1/4" = 1'-0"

SHEET SPEC ID LIST

| SPEC ID | SPEC SECTION & DESCRIPTION |
|---------|---|
| 1 | ADA DOOR PUSH PLATE, WALL-MOUNTED - SEE ELEVATION. CONNECTED TO LOW-ENERGY SWING DOOR OPERATOR; SEE ELECTRICAL. |
| 2 | ADA SLIM VESTIBULE PUSH PLATE, MULLION-MOUNTED - SEE ELEVATION. SEE ELECTRICAL. |
| 3 | EXTERIOR STOOP; SEE STRUCTURAL |
| 4 | KNOTLESS NYLON NETTING SUPPORTED BY PEFS FRAME |
| 5 | STAINLESS STEEL BOLLARD WITH ADA DOOR PUSH PLATE; SEE ELECTRICAL. |
| 7 | ICE MACHINE BY OWNER |
| 8 | REFRIGERATOR BY OWNER. |
| 9 | PROVIDE (FRP-1) FOR 48" AT EACH SIDE OF BASIN AND PROVIDE (MOP-1), REFER TO MOUNTING HEIGHT SHEETS |
| 11 | H-I-O DRINKING FOUNTAIN WITH BOTTLE FILLER |
| 13 | VENDING MACHINES BY OWNER. |
| 14 | LIMITED-USE/LIMITED APPLICATION ELEVATOR |
| 15 | ARU - SEE MECHANICAL. |
| 16 | AG WALL EXTENDS UP TO STRUCTURE ABOVE - SEE STRUCTURAL FOR CONNECTION |
| 17 | KNOTLESS NYLON DIVIDER CURTAIN SUPPORTED BY PEFS FRAME |
| 18 | BATTING CAGE COLUMN |
| 19 | OVERLAPPED NETTING FOR ENTRY/EXIT |
| 20 | BOLLARD LOCATION |

GENERAL NOTES - FLOOR PLAN

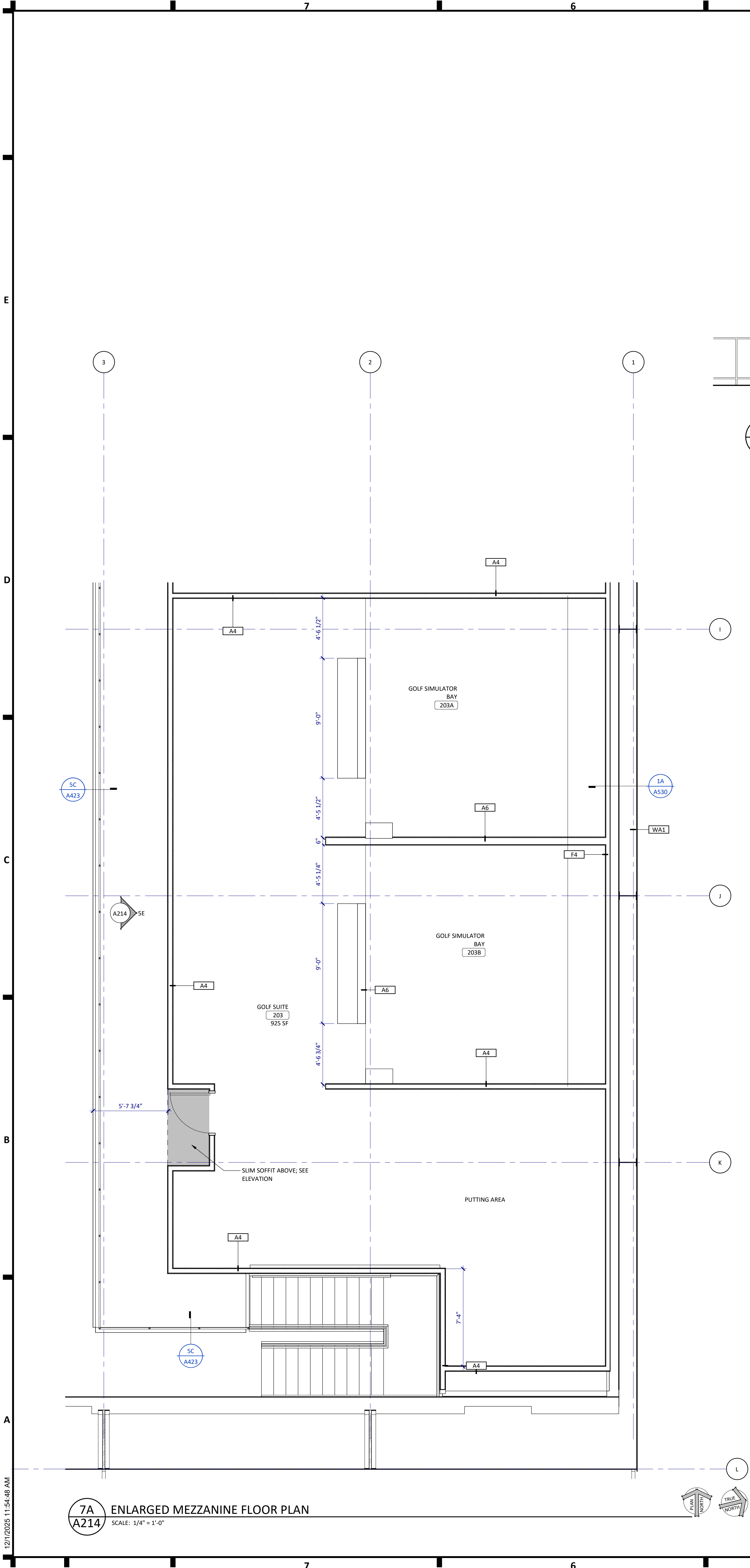
- A. FOR TYPICAL BARRIER FREE TOILET ROOM TYPES AND ACCESSORIES REQUIREMENTS AND LOCATIONS SEE DWG G120.
- B. FOR TYPICAL HOUSEKEEPING CLOSETS ACCESSORIES REQUIREMENTS AND MOUNTING LOCATIONS SEE DWG G120.
- C. ALL PARTITION TYPES ARE "A4" TYPICALLY UNLESS OTHERWISE NOTED.
- D. COORDINATE PARTITION FIRE RATED REQUIREMENTS AS INDICATED ON REFLECTED CEILING PLANS - DRAWING SERIES A700.
- E. TYPICALLY INSTALL SOAP DISPENSERS AND PAPER TOWEL DISPENSER AT ALL SINKS UNLESS NOTED OTHERWISE.
- F. PROVIDE WALL REINFORCEMENT PER DETAIL 7A/A620 AT WALL-MOUNTED SHELVES AND STORAGE UNITS, MARKER BOARDS, BULLETIN BOARDS, TACK BOARDS, TELEVISIONS AND OTHER CONTRACTOR OR OWNER FURNISHED WALL-MOUNTED ITEMS.
- G. FOR ALL CARPET TYPE CHANGES BETWEEN ROOMS, TRANSITION SHALL OCCUR AT CENTERLINE OF DOOR PANEL TYPICALLY - U.N.D. SEE DWG 2A/A620.
- H. COORDINATE DIMENSIONS W/ ASTERISK (IE - *X-X) W/ EQUIPMENT VENDOR.
- I. PROVIDE BULLNOSE ON ALL CMU OUTSIDE CORNERS - TYPICAL.
- J. FOR INTERIOR METAL STUD CONSTRUCTION ALL DIMENSIONS ARE TO FACE OF METAL STUDS UNLESS NOTED OTHERWISE.
- K. FOR WOOD CONSTRUCTION ALL DIMENSIONS ARE TO EXTERIOR FACE OF SHEATHING AND CENTERLINE OF STUDS UNLESS NOTED OTHERWISE.
- L. ALL DIMENSIONS INDICATED AS "CLEAR" ARE TO FACE OF FINISH (GYPSUM, TILE, ETC.).
- M. ALL MASONRY DIMENSIONS ARE TO FACE OF MASONRY UNLESS NOTED OTHERWISE.
- N. ALL EXTERIOR OPENING DIMENSIONS ARE ROUGH OPENINGS.
- O. COORDINATE ALL FLOOR OPENING DIMENSIONS AND CLEARANCES FOR DUCTWORK W/ MECHANICAL CONTRACTOR - TYPICAL.
- P. COORDINATE AND/OR CONFIRM ANY DIMENSIONAL DISCREPANCIES WITH ARCHITECT PRIOR TO INSTALLATION.

KEYNOTES - INTERIOR ELEV.

| NO | NOTE | REV. |
|----|--|------|
| 1 | DISPLAY BY OWNER. PROVIDE BLOCKING AS NEEDED. POWER BY ELECTRICAL. SEE ELECTRICAL FOR MOUNTING HEIGHTS | |
| 2 | WHITEBOARD BY OWNER. PROVIDE BLOCKING AS NEEDED. | |
| 3 | MANUFACTURER STANDARD TENSIONED FABRIC - COLOR 1 (WHITE) | |
| 4 | MANUFACTURER STANDARD TENSIONED FABRIC - COLOR 2 (GREY) | |
| 5 | SCOREBOARD. PROVIDE POWER, DATA AND BLOCKING. | |
| 7 | MANUFACTURER STANDARD TENSIONED FABRIC - COLOR 3 (DARK GREY) | |
| 8 | GATE | |

GENERAL NOTES - INTERIOR ELEVATIONS

- A. REFER TO A620 FOR STANDARD CASEWORK ELEVATIONS AND CONSTRUCTION.
- B. ALL WALL SURFACES TO BE (PT-7) UNLESS NOTED OTHERWISE.
- C. PROVIDE LEVEL "S" DRYWALL FINISH AT ALL APPLIED GRAPHICS AND WRITABLE WALL SURFACE LOCATIONS.
- D. PROVIDE WALL REINFORCEMENT AT ALL WALL MOUNTED ITEMS.
- E. ANY EXPOSED CABINET EDGE SHALL BE FINISHED EDGE TO MATCH ADJACENT CABINET FINISH.
- F. PAINT ALL EXPOSED (VISIBLE) DUCTWORK ABOVE THE CEILING LINE OF CLOUDS (PT-7).
- G. SEE SHEET G120 FOR ALL TOILET RIM HEIGHTS AND ACCESSORY MOUNTING HEIGHTS.



5E
A214
MEZZANINE ELEVATION
SCALE: 1/4" = 1'-0"

7A
A214
ENLARGED MEZZANINE FLOOR PLAN
SCALE: 1/4" = 1'-0"

| SHEET SPEC ID LIST | |
|--------------------|---|
| SPEC ID | SPEC SECTION & DESCRIPTION |
| 1 | ADA DOOR PUSH PLATE, WALL-MOUNTED - SEE ELEVATION. CONNECTED TO LOW-ENERGY SWING DOOR OPERATOR; SEE ELECTRICAL. |
| 2 | ADA SUN VESTIBULE PUSH PLATE, MULLION-MOUNTED - SEE ELEVATION. SEE ELECTRICAL. |
| 3 | EXTERIOR STOOP; SEE STRUCTURAL. |
| 4 | KNOTLESS NYLON NETTING SUPPORTED BY PEFS FRAME. |
| 5 | STAINLESS STEEL BOLLARD WITH ADA DOOR PUSH PLATE; SEE ELECTRICAL. |
| 7 | ICE MACHINE BY OWNER. |
| 8 | REFRIGERATOR BY OWNER. |
| 9 | PROVIDE (FRP-1) FOR 48" AT EACH SIDE OF BASIN AND PROVIDE (MOP-1). REFER TO MOUNTING HEIGHT SHEETS. |
| 11 | HILLO DRINKING FOUNTAIN WITH BOTTLE FILLER. |
| 13 | VENDING MACHINES BY OWNER. |
| 14 | LIMITED-USE/LIMITED APPLICATION ELEVATOR. |
| 15 | IRU - SEE MECHANICAL. |
| 16 | A6 WALL EXTENDS UP TO STRUCTURE ABOVE - SEE STRUCTURAL FOR CONNECTION. |
| 17 | KNOTLESS NYLON DIVIDER CURTAIN SUPPORTED BY PEFS FRAME. |
| 19 | BATTING CASE COLUMN. |
| 19 | OVERLAPPED NETTING FOR ENTRY/EXIT. |
| 20 | BOLLARD LOCATION. |

- GENERAL NOTES - FLOOR PLAN
- A. FOR TYPICAL BARRIER FREE TOILET ROOM TYPES AND ACCESSORIES REQUIREMENTS AND LOCATIONS SEE DWG G120.
 - B. FOR TYPICAL HOUSEKEEPING CLOSETS ACCESSORIES REQUIREMENTS AND MOUNTING LOCATIONS SEE DWG G120.
 - C. ALL PARTITION TYPES ARE "A4" TYPICALLY UNLESS OTHERWISE NOTED.
 - D. COORDINATE PARTITION FIRE RATED REQUIREMENTS AS INDICATED ON REFLECTED CEILING PLANS - DRAWING SERIES A700.
 - E. TYPICALLY INSTALL SOAP DISPENSERS AND PAPER TOWEL DISPENSER AT ALL SINKS UNLESS NOTED OTHERWISE.
 - F. PROVIDE WALL REINFORCEMENT PER DETAIL TA/A630 AT WALL-MOUNTED SHELVES AND STORAGE UNITS, MARKER BOARDS, BULLETIN BOARDS, TACK BOARDS, TELEVISIONS AND OTHER CONTRACTOR OR OWNER FURNISHED WALL-MOUNTED ITEMS.
 - G. FOR ALL CARPET TYPE CHANGES BETWEEN ROOMS, TRANSITION SHALL OCCUR AT CENTERLINE OF DOOR PANEL TYPICALLY - U.N.O. SEE DWG TA/A600.
 - H. COORDINATE DIMENSIONS W/ ASTERISK (IE - "X-X") W/ EQUIPMENT VENDOR.
 - I. PROVIDE BULLNOSE ON ALL CMU OUTSIDE CORNERS - TYPICAL.
 - J. FOR INTERIOR METAL STUD CONSTRUCTION ALL DIMENSIONS ARE TO FACE OF METAL STUDS UNLESS NOTED OTHERWISE.
 - K. FOR WOOD CONSTRUCTION ALL DIMENSIONS ARE TO EXTERIOR FACE OF SHEATHING AND CENTERLINE OF STUDS UNLESS NOTED OTHERWISE.
 - L. ALL DIMENSIONS INDICATED AS "CLEAR" ARE TO FACE OF FINISH (GYPSUM, TILE, ETC).
 - M. ALL MASONRY DIMENSIONS ARE TO FACE OF MASONRY UNLESS NOTED OTHERWISE.
 - N. ALL EXTERIOR OPENING DIMENSIONS ARE ROUGH OPENINGS.
 - O. COORDINATE ALL FLOOR OPENING DIMENSIONS AND CLEARANCES FOR DUCTWORK W/ MECHANICAL CONTRACTOR - TYPICAL.
 - P. COORDINATE AND/OR CONFIRM ANY DIMENSIONAL DISCREPANCIES WITH ARCHITECT PRIOR TO INSTALLATION.

| KEYNOTES - INTERIOR ELEV. | | |
|---------------------------|---|------|
| NO | NOTE | REV. |
| 1 | DISPLAY BY OWNER. PROVIDE BLOCKING AS NEEDED. POWER BY ELECTRICAL. SEE ELECTRICAL FOR MOUNTING HEIGHTS. | |
| 2 | WHITEBOARD BY OWNER. PROVIDE BLOCKING AS NEEDED. | |
| 3 | MANUFACTURER STANDARD TENSIONED FABRIC - COLOR 1 (WHITE) | |
| 4 | MANUFACTURER STANDARD TENSIONED FABRIC - COLOR 2 (GREY) | |
| 5 | SCOREBOARD; PROVIDE POWER, DATA AND BLOCKING. | |
| 7 | MANUFACTURER STANDARD TENSIONED FABRIC - COLOR 3 (DARK GREY) | |
| 8 | GATE | |

- GENERAL NOTES - INTERIOR ELEVATIONS
- A. REFER TO AG60 FOR STANDARD CASEWORK ELEVATIONS AND CONSTRUCTION.
 - B. ALL WALL SURFACES TO BE (PT-7) UNLESS NOTED OTHERWISE.
 - C. PROVIDE LEVEL "S" DRYWALL FINISH AT ALL APPLIED GRAPHICS AND WRITABLE WALL SURFACE LOCATIONS.
 - D. PROVIDE WALL REINFORCEMENT AT ALL WALL MOUNTED ITEMS.
 - E. ANY EXPOSED CABINET EDGE SHALL BE FINISHED EDGE TO MATCH ADJACENT CABINET FINISH.
 - F. PAINT ALL EXPOSED (VISIBLE) DUCTWORK ABOVE THE CEILING LINE OF CLOUDS (PT-7).
 - G. SEE SHEET G120 FOR ALL TOILET RIM HEIGHTS AND ACCESSORY MOUNTING HEIGHTS.

JLGarchitects

505 W Saint Germain Street
Suite 200
St. Cloud, MN 56301
phone: (320) 498-7008
www.jlgarchitects.com
copyright © 2025

REVISION SCHEDULE

| NO. | DESCRIPTION | DATE |
|-----|-------------|------|
|-----|-------------|------|

ST. CLOUD SCHOOL DISTRICT

742 MULTIPURPOSE ATHLETIC FACILITY

ST. CLOUD, MN

DATE

10/20/2025

PHASE

BID PACK #1

PROJECT

19230.03

SHEET

A214

ENLARGED PLANS AND ELEVATIONS

| SHEET SPEC ID LIST | |
|--------------------|----------------------------|
| SPEC ID | SPEC SECTION & DESCRIPTION |
| DOWNSPOUT-1 | 07 6200 - DOWNSPOUTS |

JLGarchitects

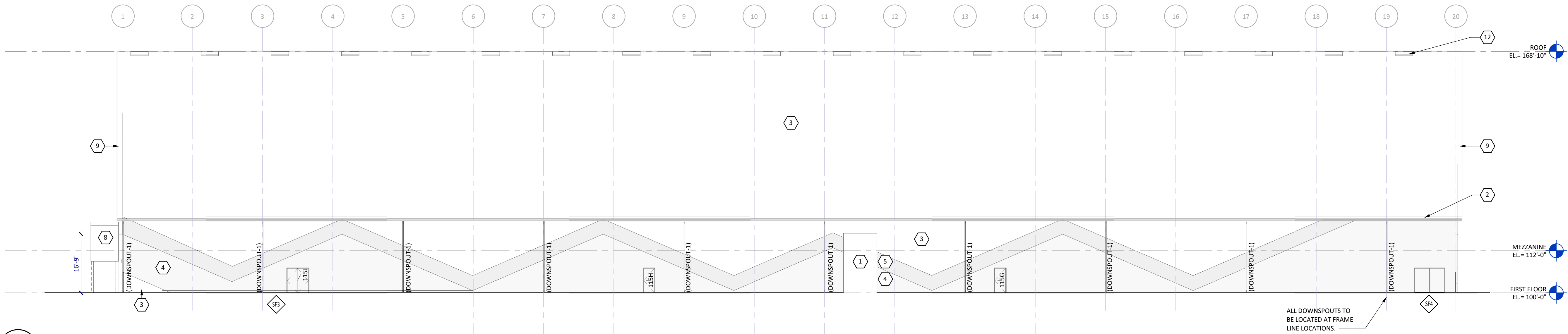
505 W Saint Germain Street
Suite 200
St. Cloud, MN 56301
phone: (320) 498-7008
www.jlgarchitects.com
copyright © 2025

| KEYNOTES - EXTERIOR ELEV. | | |
|---------------------------|--|------|
| NO | NOTE | REV. |
| 1 | AHU - SEE MECHANICAL FOR PENETRATIONS | |
| 2 | MANUFACTURER STANDARD ICE BREAKING GUARDS AT ALL GUTTERS | |
| 3 | MANUFACTURER STANDARD TENSIONED FABRIC - COLOR 1 (WHITE) | |
| 4 | MANUFACTURER STANDARD TENSIONED FABRIC - COLOR 2 (GREY) | |
| 5 | MANUFACTURER CUSTOM TENSIONED FABRIC - COLOR 3 (DARK GREY) | |
| 7 | 30" HIGH METAL LETTERS ON STANDOFFS | |
| 8 | CANOPY INDEPENDENT OF FABRIC BUILDING; FLASHING AT BUILDING INTERFACE TO BE PROVIDED BY FABRIC BUILDING SUPPLIER | |
| 9 | 18" RAKE EXTENSION AT GABLE ENDS BY FABRIC BUILDING SUPPLIER | |
| 10 | EXTERIOR LIGHTING, TYPICAL. SEE ELECTRICAL | |
| 11 | SEE MECHANICAL/PLUMBING FOR ALL PENETRATIONS, TYP. | |
| 12 | ROOF VENTS DESIGNED BY FABRIC BUILDING SUPPLIER, TYPICAL | |

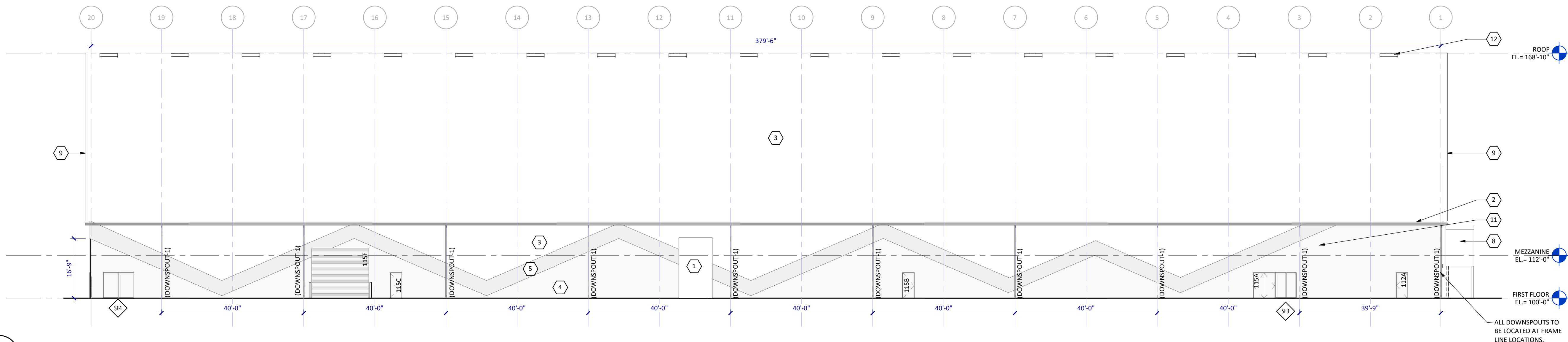
| REVISION SCHEDULE | | |
|-------------------|-------------|------|
| NO. | DESCRIPTION | DATE |

GENERAL NOTES - EXTERIOR ELEVATIONS

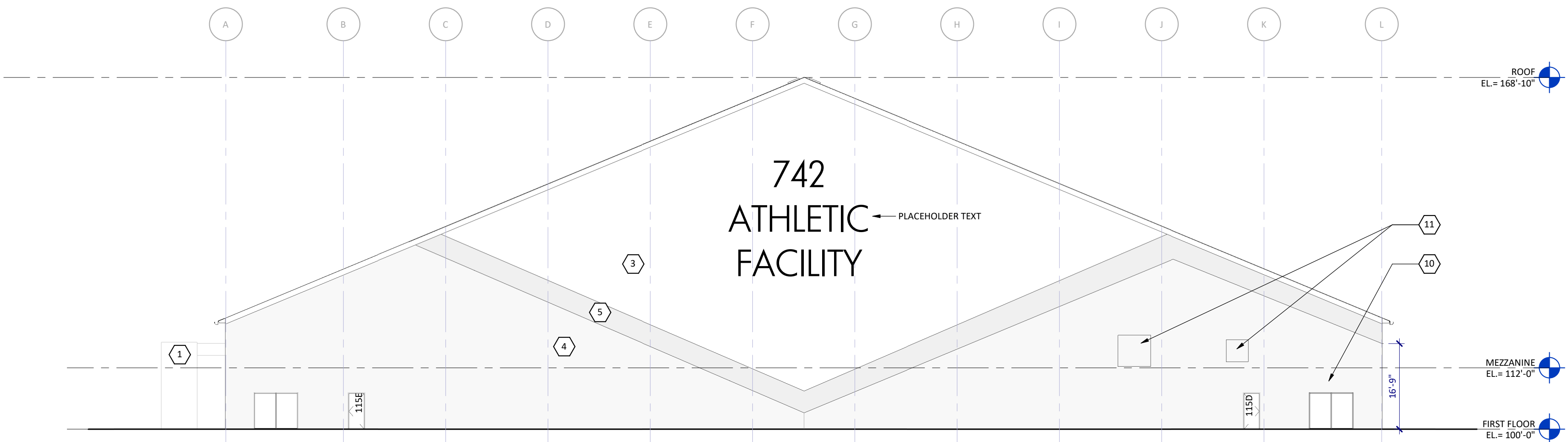
A. REFER TO GLAZING ELEVATIONS FOR STOREFRONT ELEVATIONS



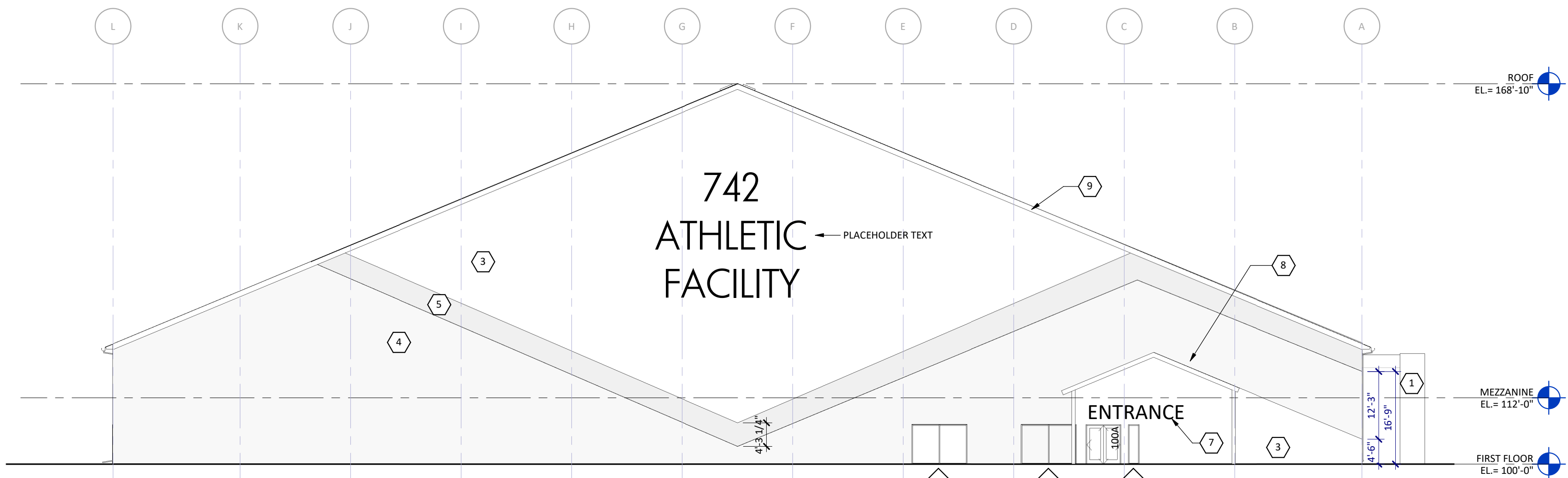
7D
A300
PLAN NORTH ELEVATION
SCALE: 1/16" = 1'-0"



7B
A300
PLAN SOUTH ELEVATION
SCALE: 1/16" = 1'-0"



7A
A300
PLAN WEST ELEVATION
SCALE: 1/16" = 1'-0"



4A
A300
PLAN EAST ELEVATION
SCALE: 1/16" = 1'-0"

ST. CLOUD SCHOOL DISTRICT
742 MULTIPURPOSE ATHLETIC FACILITY
ST. CLOUD, MN

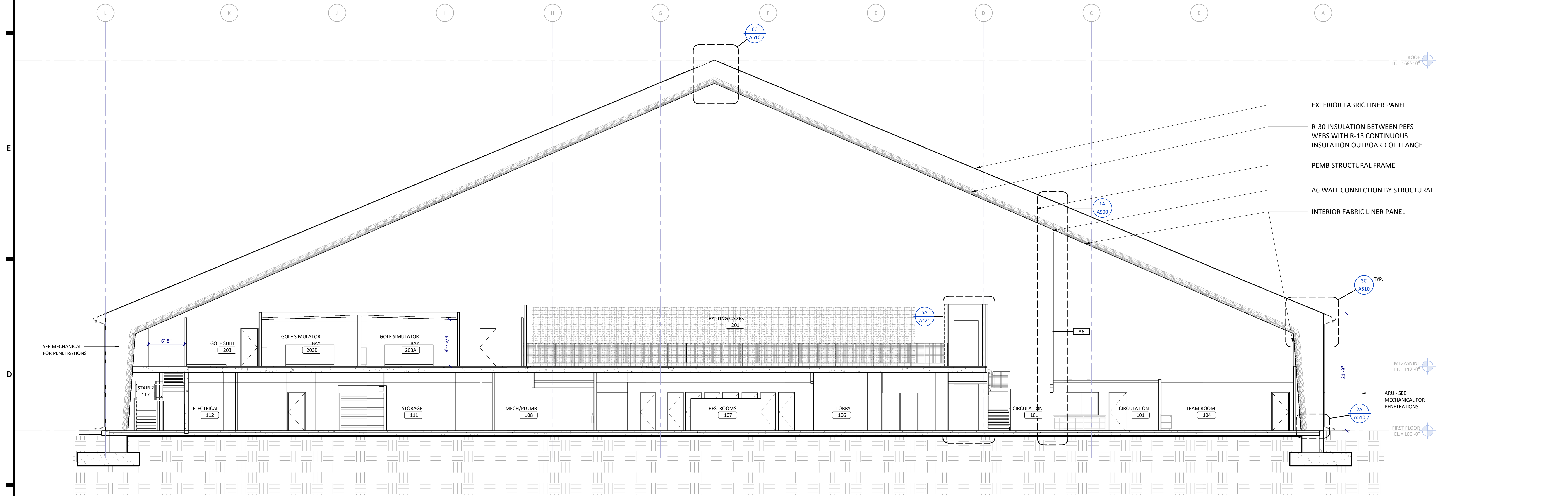
DATE
10/20/2025

PHASE
BID PACK #1

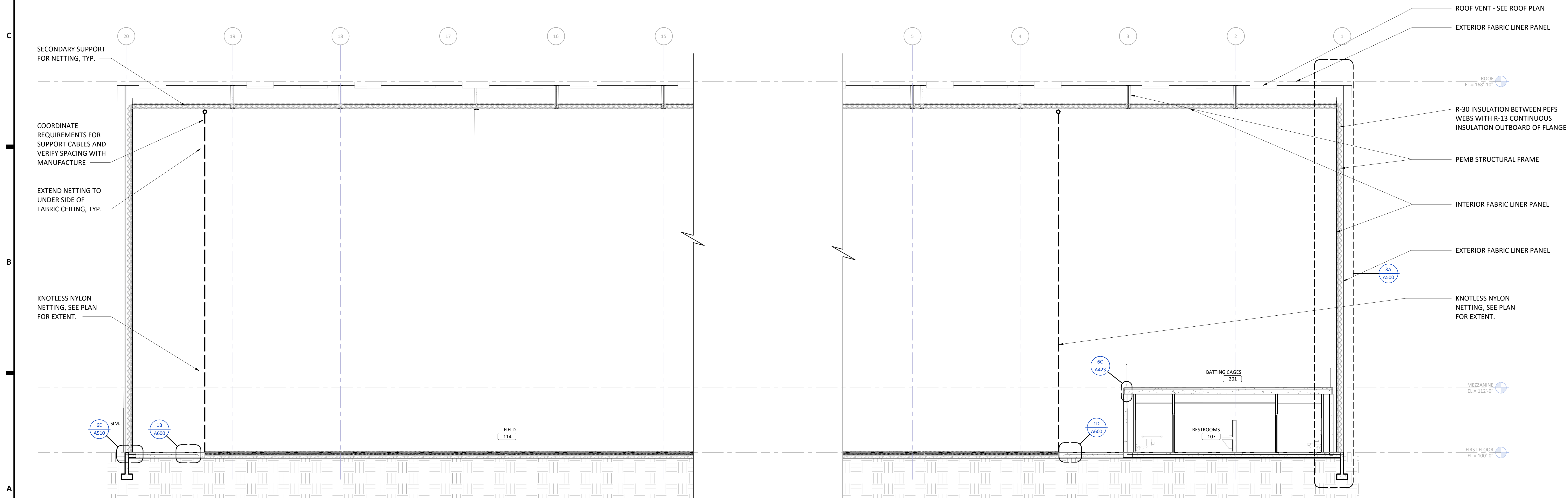
PROJECT
19230.03

SHEET
A300

EXTERIOR
ELEVATIONS



7D
A401 NORTH-SOUTH BUILDING SECTION
SCALE: 1/8" = 1'-0"



7A
A401 EAST-WEST BUILDING SECTION
SCALE: 1/8" = 1'-0"



505 W Saint Germain Street
Suite 200
St. Cloud, MN 56301
phone - (320) 438-7008
www.jlgarchitects.com
copyright © 2025

REVISION SCHEDULE

| NO. | DESCRIPTION | DATE |
|-----|-------------|------|
|-----|-------------|------|

ST. CLOUD SCHOOL DISTRICT
742 MULTIPURPOSE ATHLETIC FACILITY
ST. CLOUD, MN

DATE

10/20/2025

PHASE

BID PACK #1

PROJECT

19230.03

SHEET

A605

STRIPING PLAN



FIELD STRIPING HIERARCHY
PRIMARY SOCCER - White 4" LINE
SECONDARY SOCCER - Gray 4" LINE
SOFTBALL - Bright Yellow 4" LINE
LACROSSE - Florida Blue 4" LINE
Field - Field Green 4" LINE
Football - Lime Green 4" LINE

7A
A605
STRIPING PLAN
SCALE: 3/32" = 1'-0"

12/1/2025 11:55:20 AM

INTERIOR RENDERS

VIEW FROM LOBBY LOOKING INTO FIELD



INTERIOR RENDERS

VIEW FROM FIELD LOOKING AT LOBBY/MEZZANINE



INTERIOR RENDERS

VIEW FROM FIELD LOOKING AT LOBBY/MEZZANINE



