

DENTON ISD

MAY 2022

Newton Rayzor Student Focus Group

5 Second Rule Game

How to Play

For each category, whoever is called on will have 5 seconds to answer the question.

Get creative! There are no wrong answers.

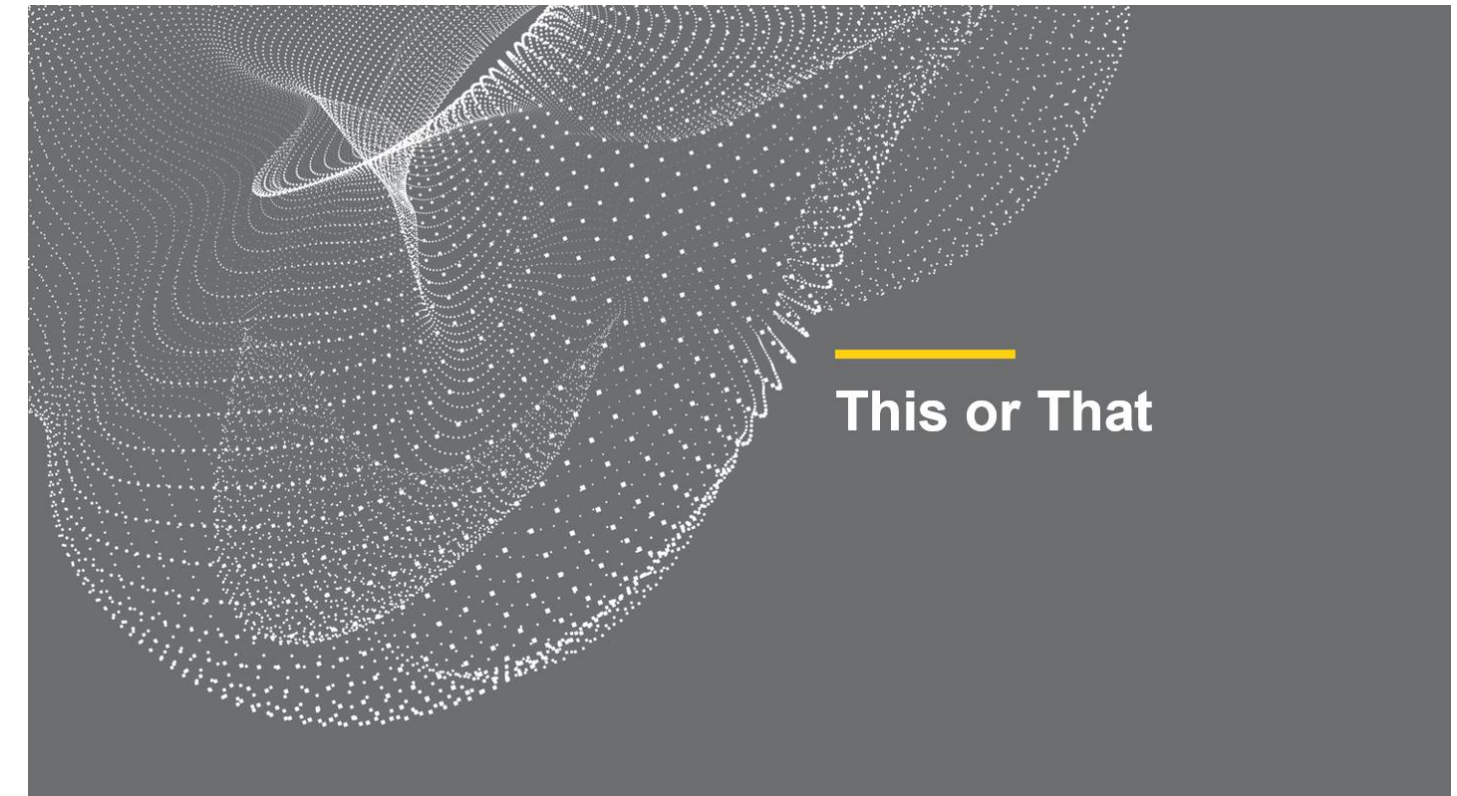
Rooms that can be used for learning in your school.



What is an Architect?

You've also probably passed by a building that is under construction.

But before a builder is ever on site, there is a lot of work that goes into the planning of a building that is done by the Architect.



Newton Rayzor Elementary School

Library

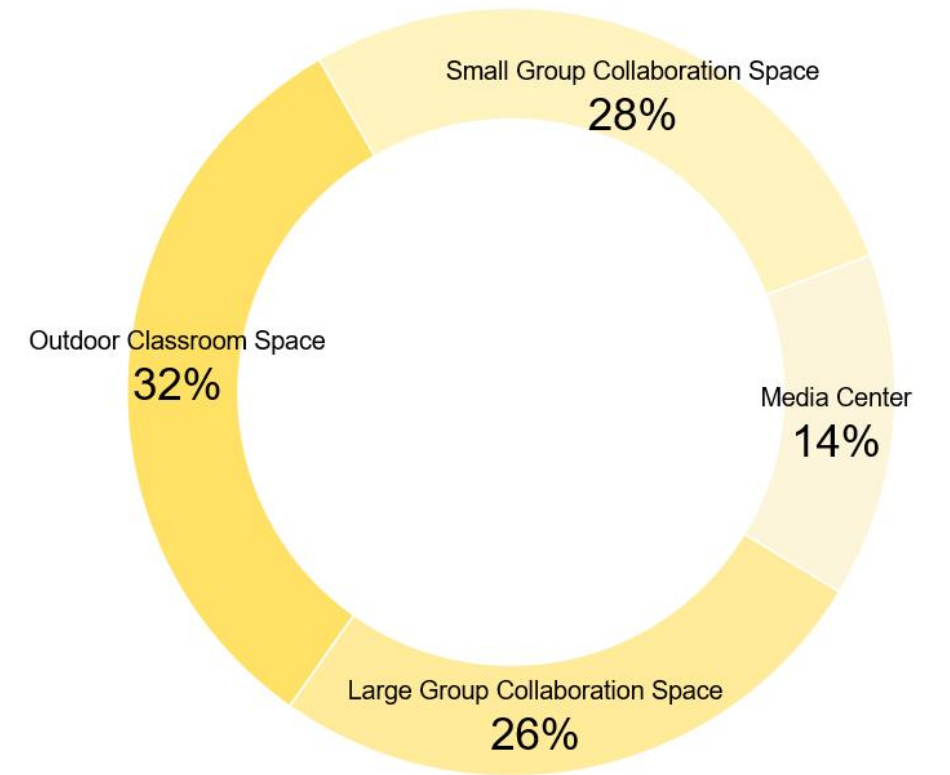


A



B

Other than a classroom, in what type of space would you like to use for teaching? Choose all that apply



What aspects of Newton Rayzor would you like to see implemented in this new school?



COMMUNITY
Collaboration, Family, Connection between grade levels, Multiple learning environments, Displays of student work, Flexibility, Connectedness

CONNECTION TO NATURE
Garden, Views to the Outdoors, Sustainable-environmentally conscious, Natural light, Exploration spaces

DIVERSITY
International mindedness, Systems of Equity, Blend of Cultures and Communities, Inclusive

KINDNESS
Welcome environment, Warmth, Inclusiveness, Comfortable learning spaces

Design – Student and Faculty Focus Groups

Teacher Survey Responses

What are the factors that apply in a learning space that help your students to learn best? Put in order from 1-5 with 1 being the most important in helping students learn best.

- 1 OUTDOOR VIEWS/ACCESS TO NATURAL LIGHT
- 2 EASE OF COLLABORATION WITH OTHERS
- 3 CAPABILITY TO CHOOSE WHERE TO WORK
- 4 APPROPRIATE TECHNOLOGY
- 5 A VARIETY OF FURNITURE SELECTIONS



Design Strategies for Newton Rayzor Elementary School

1

FOCUS ON COMPATIBILITY

Align design features with students' developmental needs as they grow for a fulfilling and appropriate learning space

2

INTEGRATE NATURE

Bring nature into the learning environment for engaging learning experiences that connect students to the real world

3

INSPIRE EXPLORATION

Support curiosity and student-led learning with opportunities to observe, experiment, and discover

4

NURTURE WELLBEING

Promote the health and wellbeing of the whole student with restorative spaces and opportunities for connection and mentorship

5

CREATE WARMTH

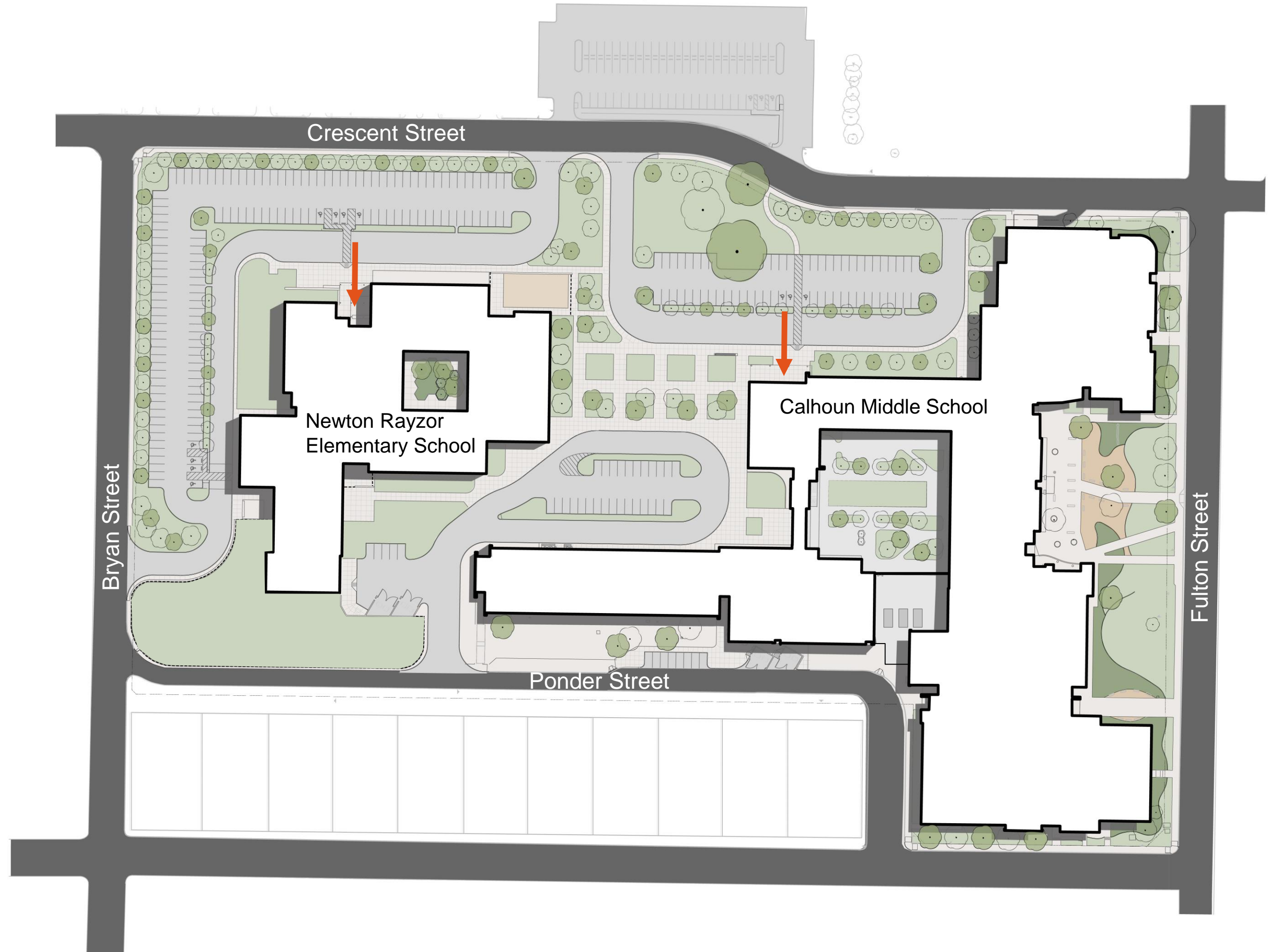
Develop a vibrant, welcoming space with playful energy to comfort and engage students as they learn and grow

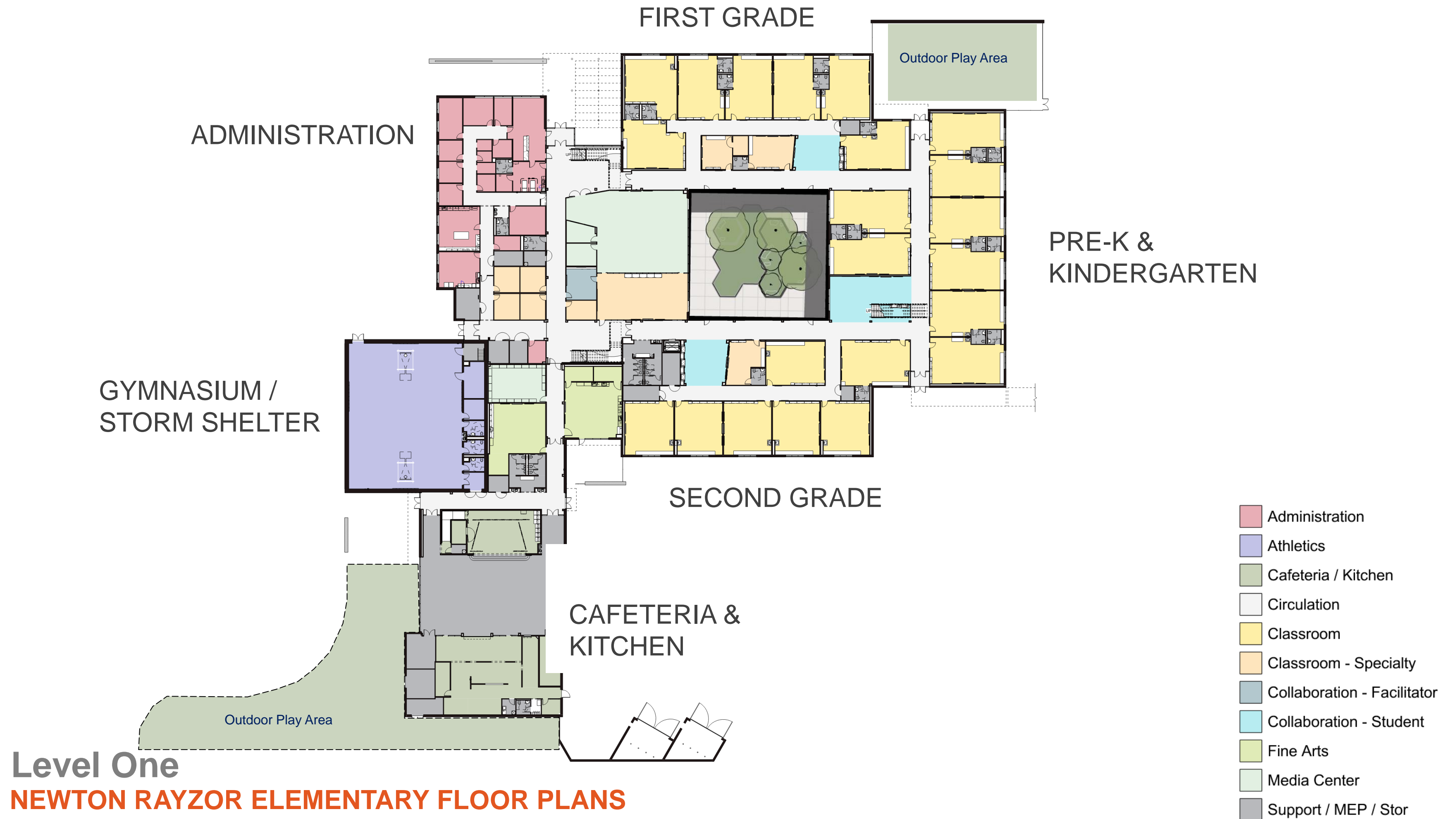
6

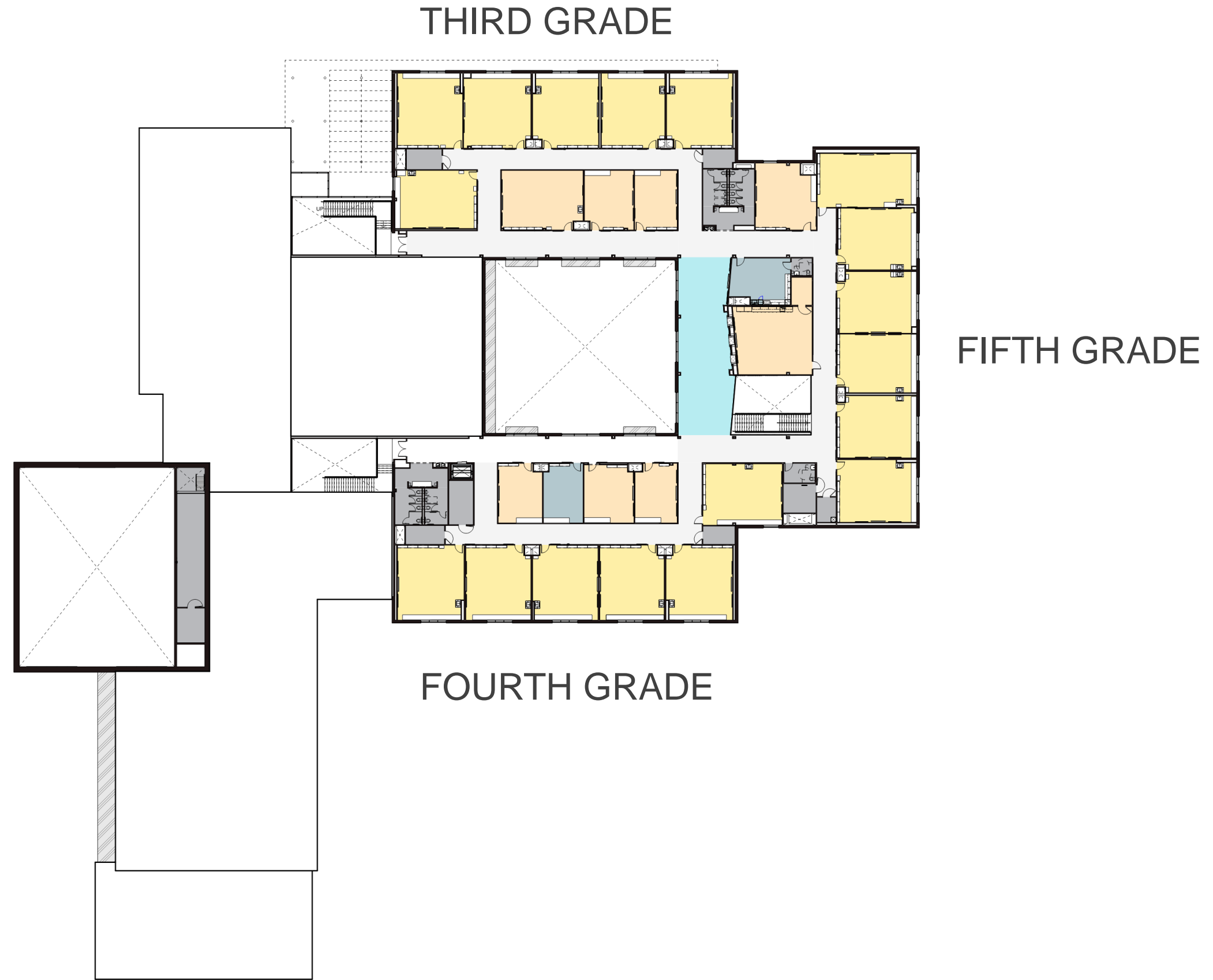
EMBRACE FLEXIBILITY

Design should be open-ended rather than prescriptive. Create space for creativity, imagination, and a range of learning experiences

SITE PLAN
TRAFFIC PLAN







Level Two
NEWTON RAYZOR ELEMENTARY FLOOR PLANS

- Circulation
- Classroom
- Classroom - Specialty
- Collaboration - Facilitator
- Collaboration - Student
- Copy/Break
- Support / MEP / Stor

NEWTON RAYZOR ENTRY



NEWTON RAYZOR ELEMENTARY – COLLABORATION



NEWTON RAYZOR ELEMENTARY - CAFETERIA



NEWTON RAYZOR ELEMENTARY - LIBRARY



NEWTON RAYZOR ELEMENTARY - MATERIALS



Typical LVT



LVT



LVT



LVT



LVT



LVT



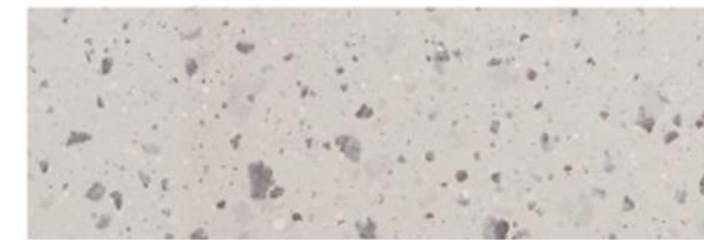
Wood Doors



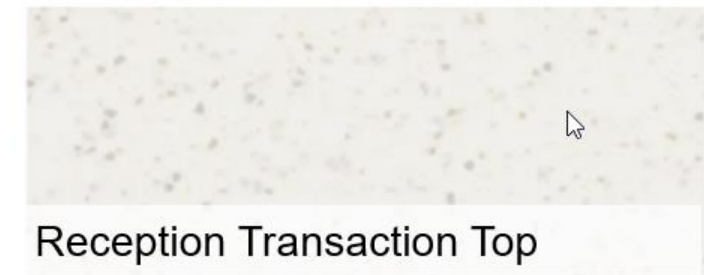
Nook Seating



Carpet



Plastic Laminate Counters



Reception Transaction Top



Nook Seating



Carpet



Nook Seating



Carpet



Wainscot Tile



Restroom Wall Tile



Restroom Floor Tile



Feature Wood



Accent Wall Tile



Acoustic Baffle



Acoustic Baffle



Acoustic Baffle



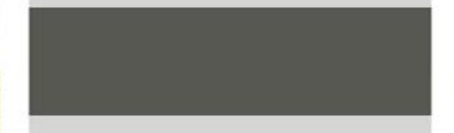
Acoustic Baffle



Typical Paint



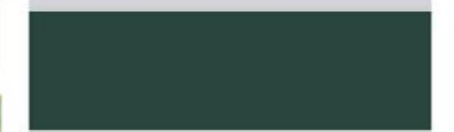
Accent Paint



Door Frame Paint



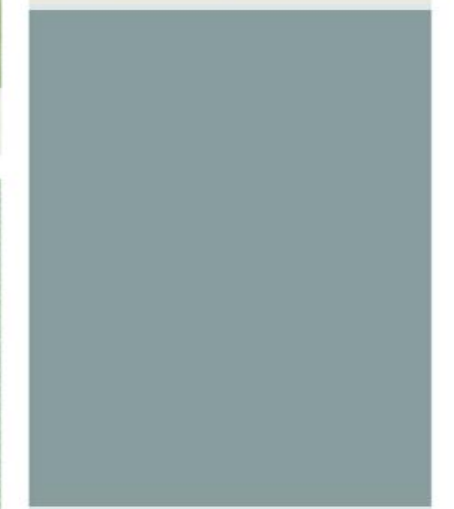
Accent Paint



Accent Paint



Accent Paint



Accent Paint

COURTYARDS – BENEFITS OF ENGAGING WITH NATURE

Health, Wellbeing, and Cognitive Performance

Cognitive Restoration

Natural environments restore limited cognitive resources, mitigating symptoms of attention fatigue and ADHD

[Berman et al, 2008; Kaplan and Berman, 2010; Kuo et al, 2004]

Stress Reduction

Natural environments have a stress reducing and physiologically restorative influence

[Ulrich et al, 1991]

Physical Health

Exposure to wilderness and treescapes promotes overall health (fitness, heart and respiratory health, immune function, and more)

[Neuroscience News, 2020; Texas A&M Forest Service]

Wellbeing

Engaging with nature instills a sense of wellbeing and calm contentment due to the health benefits provided

[Neuroscience News, 2020; Landon et al, 2020]

Learning Opportunities

Outdoor learning can support active, embodied learning experiences that excite students and connect them to the real world

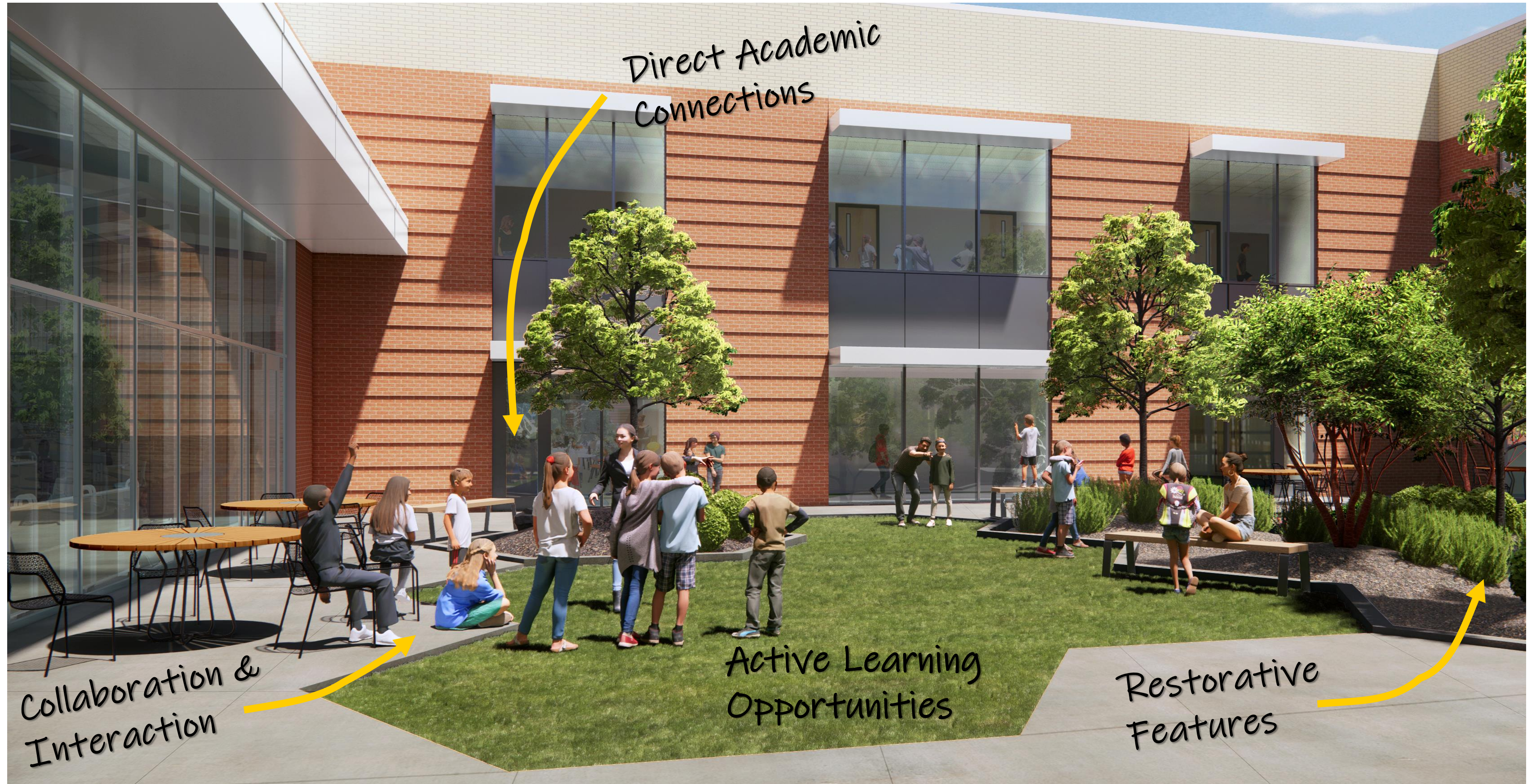
[Gill et al, 2018; Allal, 2001]

Nature Play & Creativity

Nature play is less prescriptive and provides benefits that cross over into the classroom: improved imagination, originality, attention levels, and behavior

[Merrill, 2020; Dankiw et al, 2020]

NEWTON RAYZOR ELEMENTARY – OUTDOOR LEARNING



Direct Academic
Connections

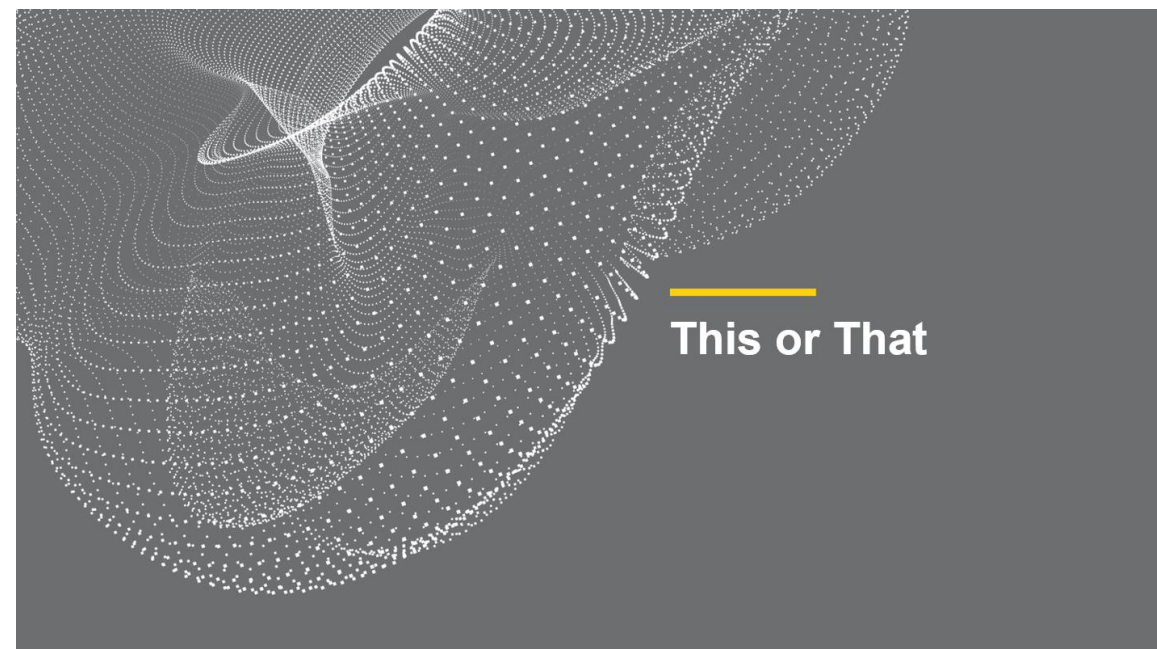
Collaboration &
Interaction

Active Learning
Opportunities

Restorative
Features

Design – Student and Faculty Focus Groups

Calhoun Student Focus Group



Library



A

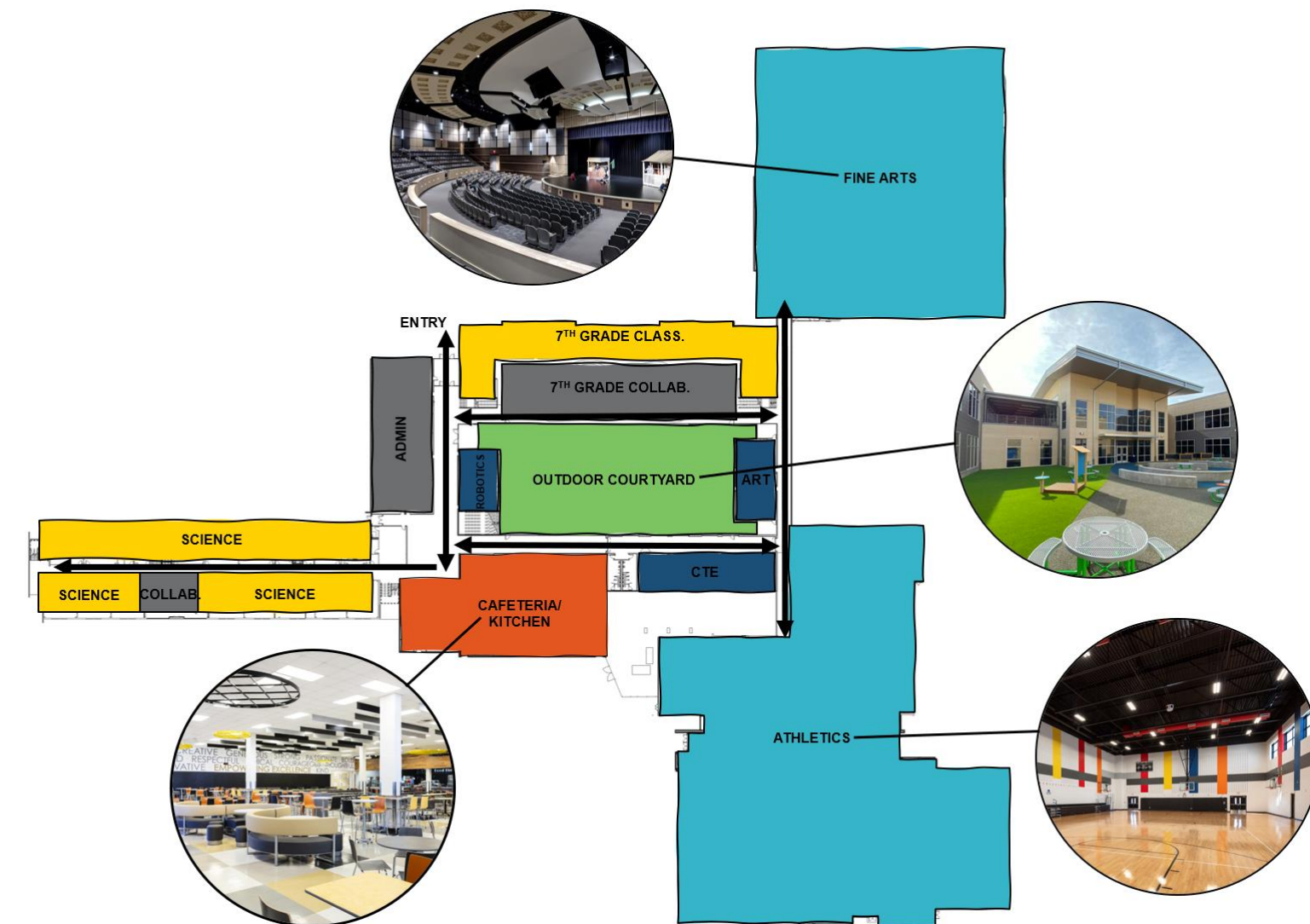


B



Architects craft buildings – whether it's a house, a school, or a skyscraper.

Architects then create an instruction manual called Construction Documents to help builders put together the parts and pieces of a building.



Design – Student and Faculty Focus Groups

Teacher Survey Responses

Calhoun Middle School — Survey Responses

Describe your ideal collaboration space including how teachers and students would use it.

FLEXIBILITY
 Movable seating
 Writable surfaces
 Varied seating options
 Kid friendly furniture
 Ease of access to teachers and peers
 Multidisciplinary

VARIETY
 Private and public areas
 Open
 Focus areas
 Places for teachers to work with students
 Storage for personal items

COMFORTABILITY
 Soft seating
 Warmth and safety
 Low acoustics
 Natural light
 Organic furniture shapes



Calhoun Middle School — Survey Responses

What aspects of Calhoun would you like to see implemented in this new school?



PHYSICAL CONNECTION
 Classes in close proximity, Enclosed school, Large collaboration spaces, Accessibility to all students, Natural light, Ability to access nature

COMMUNITY
 Team, Comradery of staff, Grade level family, Involvement, Respect, Fun environment

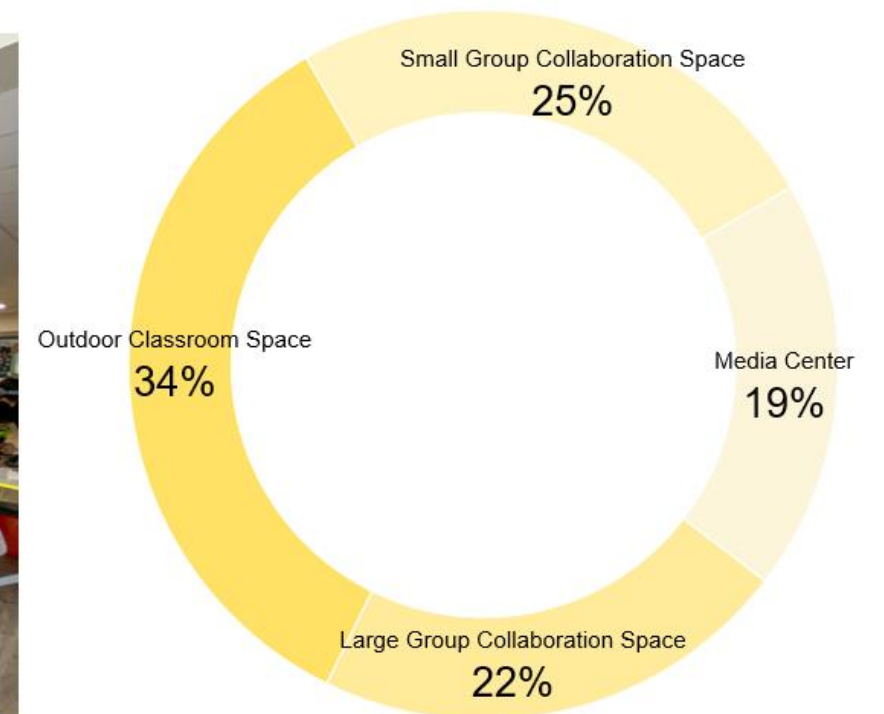
HISTORY
 Heart of Denton, Heritage, School history, Same branding

PRIDE
 Pride of school history and future of the students, Reinforcing Values/Beliefs, Traditions, Resilience as a campus, Perseverance, Pride in achievement

DIVERSITY
 Multicultural art and tributes, Student creativity, Expression, Artistry carried over from current school

Calhoun Middle School — Survey Responses

Other than a classroom, in what type of space would you like to use for teaching? Choose all that apply



Design Strategies for Calhoun Middle School

1

ALIGN WITH DEVELOPMENT

Create spaces that support young adolescents' needs for autonomy, peer interaction, competence, and relatedness

2

NURTURE WELLBEING

Promote the health and wellbeing of the whole student with restorative space and opportunities for meaningful interaction

3

PROMOTE CONNECTIVITY

Encourage cross-disciplinary thinking, peer interaction, and mentorship. Support the convergence of people and ideas

4

INTEGRATE NATURE

Bring nature into the learning environment for engaging learning experiences that connect students to the natural environment

5

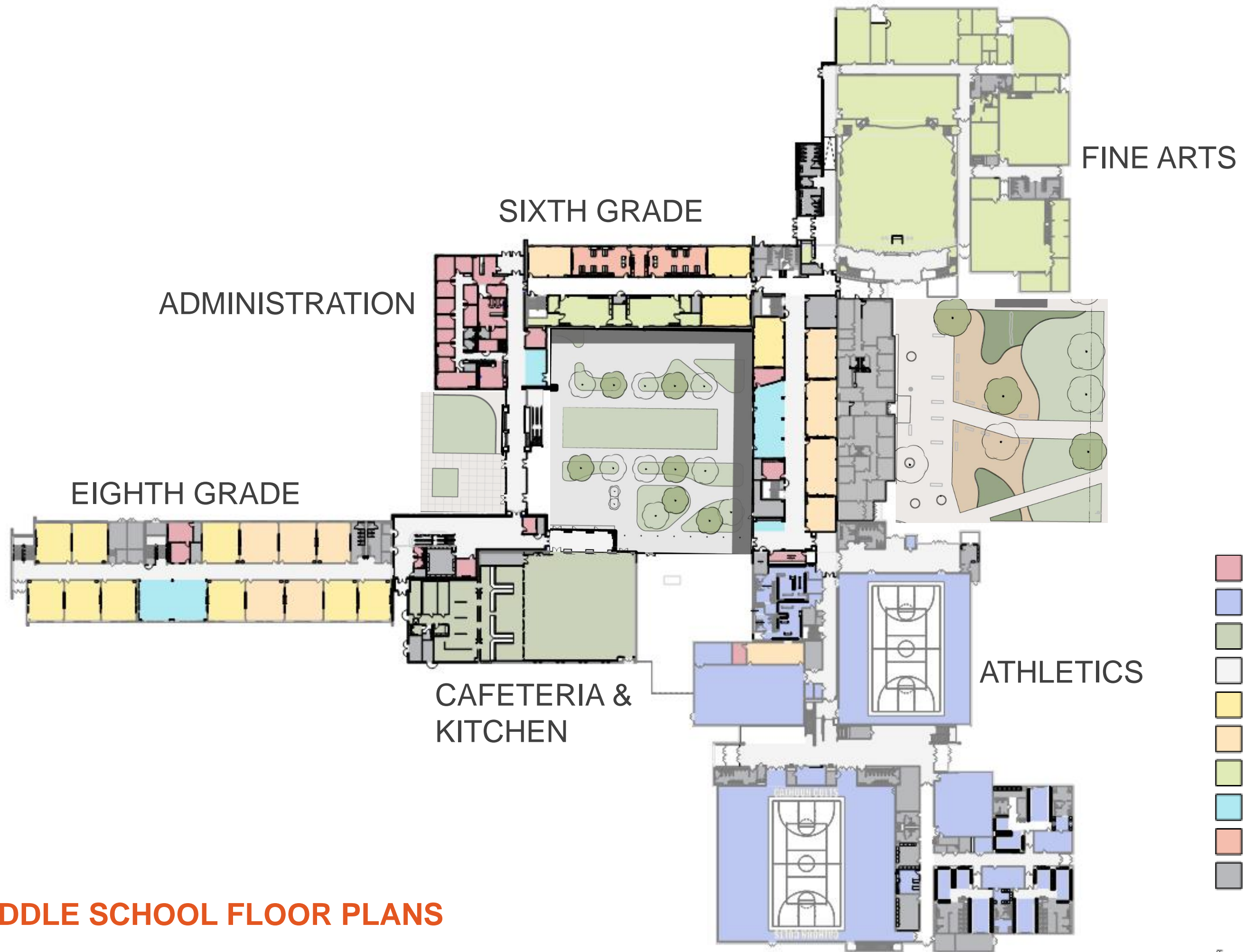
CONTEXTUALIZE LEARNING

Understand that *how* and *where* something is learned is a part of *what* is learned. Integrate hands-on, real world learning to build 21st century skills

6

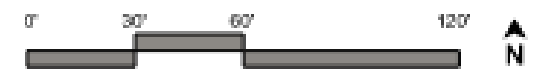
FOSTER CURIOSITY

Create spaces for active and student-led learning with opportunities to observe, explore, discover, experiment, and pursue interests.



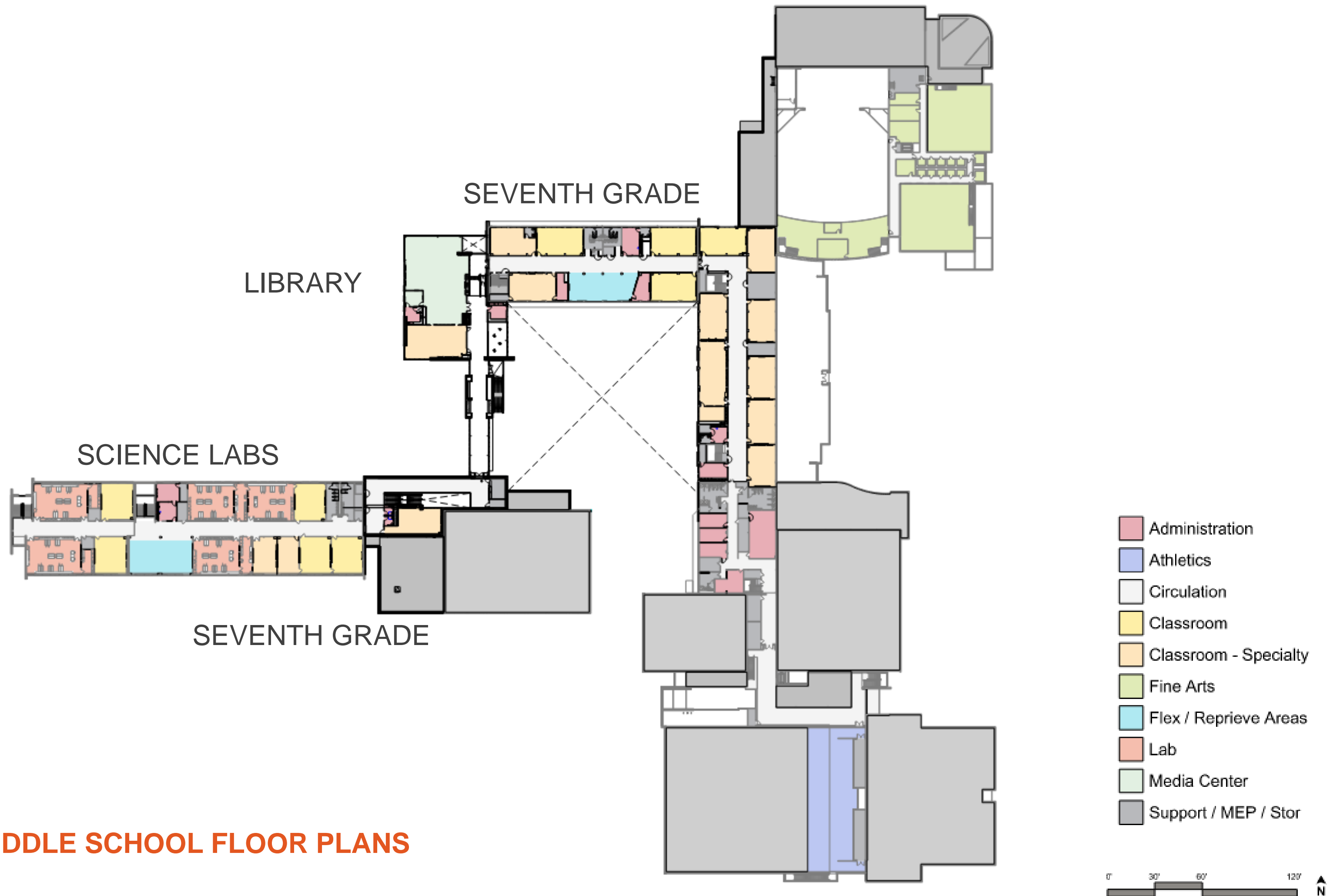
- Administration
- Athletics
- Cafeteria / Kitchen
- Circulation
- Classroom
- Classroom - Specialty
- Fine Arts
- Flex / Relieve Areas
- Lab
- Support / MEP / Stor

Level One
CALHOUN MIDDLE SCHOOL FLOOR PLANS



Level Two

CALHOUN MIDDLE SCHOOL FLOOR PLANS



CALHOUN MIDDLE SCHOOL ENTRY



CALHOUN MIDDLE SCHOOL – COLLABORATION



CALHOUN MIDDLE SCHOOL - CAFETERIA



CALHOUN MIDDLE SCHOOL - LIBRARY



CALHOUN MIDDLE SCHOOL - MATERIALS



Typical LVT



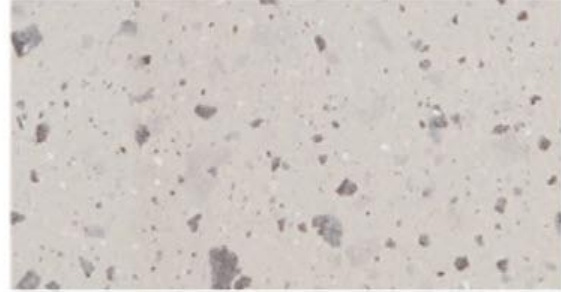
LVT



LVT



LVT



Plastic Laminate Counters



Reception Transaction Top



Carpet



Carpet



Wood Doors



Wainscot Tile



Restroom Wall Tile



Upholstery



Accent Wall Tile



Restroom Floor Tile



Upholstery



Feature Wood



Acoustic Baffle



Acoustic Baffle



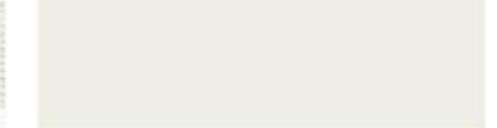
Acoustic Baffle



Acoustic Baffle



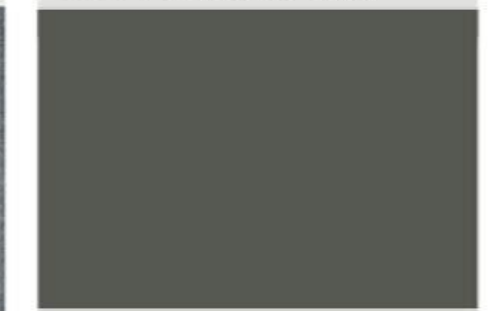
Typical Paint



Accent Paint



Door Frame Paint

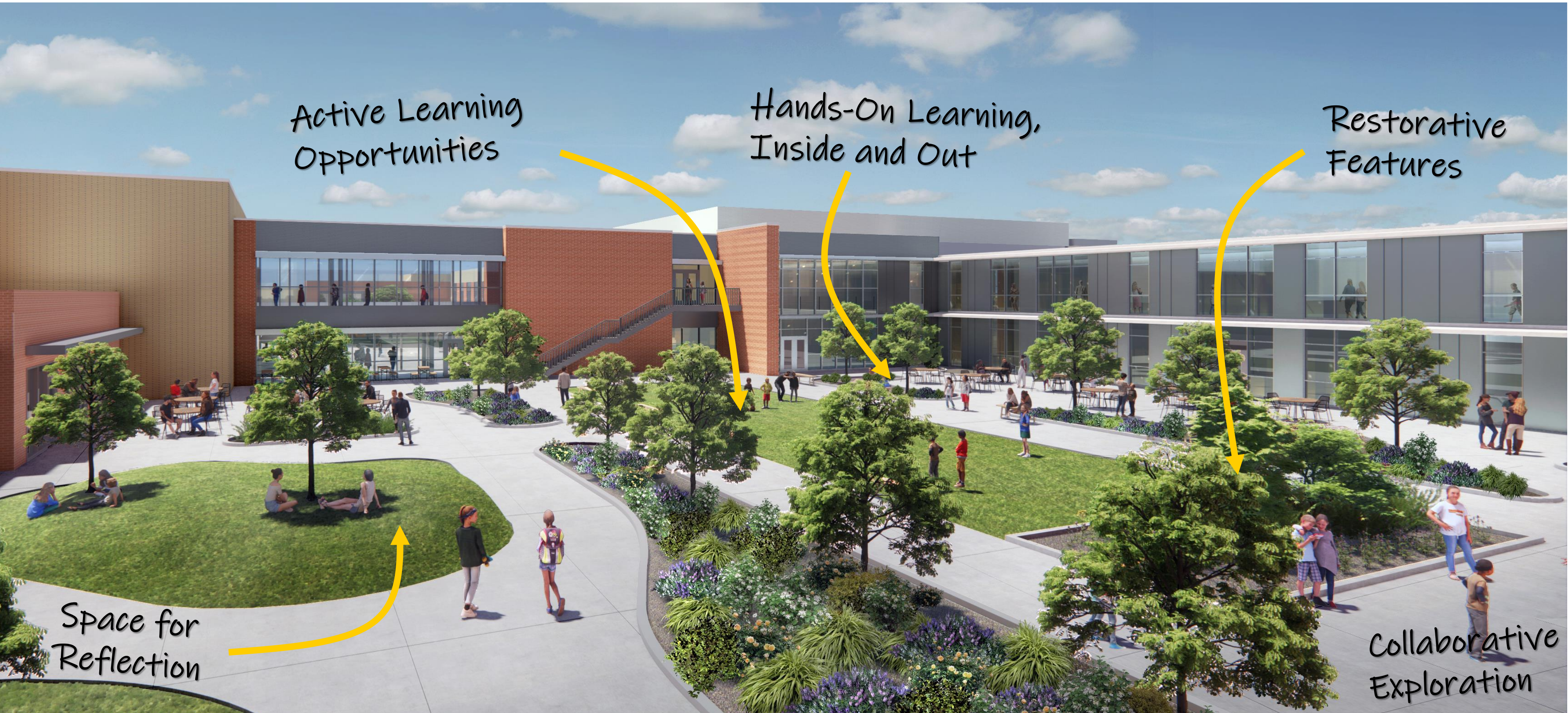


Accent Paint



Accent Paint

CALHOUN MIDDLE SCHOOL - OUTDOOR LEARNING



Active Learning Opportunities

Hands-On Learning, Inside and Out

Restorative Features

Space for Reflection

Collaborative Exploration

CALHOUN MIDDLE SCHOOL - OUTDOOR LEARNING



