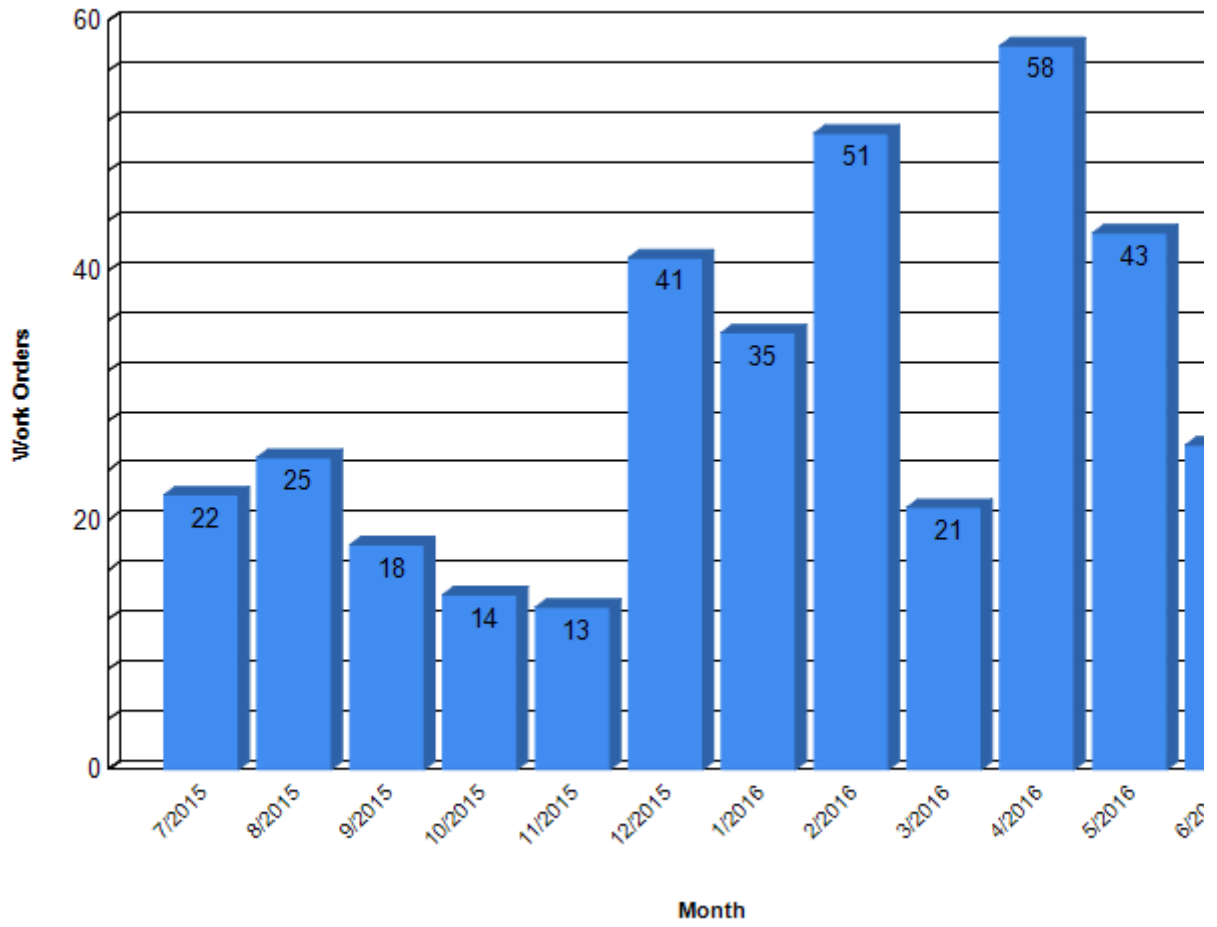


*Unscheduled Maintenance Trends*

<b>Month</b>	<b>Unscheduled Maintenance Work Orders</b>	<b>Unscheduled Maintenance WO Hours</b>	<b>Unscheduled Maintenance WO Costs</b>
July, 2015	22	626.50	\$34,491.02
August, 2015	25	550.50	\$37,567.92
September, 2015	18	541.00	\$18,780.76
October, 2015	14	485.00	\$20,689.67
November, 2015	13	441.00	\$21,604.21
December, 2015	41	416.33	\$213,689.16
January, 2016	35	543.50	\$73,814.38
February, 2016	51	542.50	\$76,168.86
March, 2016	21	765.50	\$61,953.96
April, 2016	58	275.50	\$83,207.13
May, 2016	43	246.50	\$76,174.57
June, 2016	26	420.00	\$21,557.31
<b>District Totals</b>	<b>367</b>	<b>5,853.83</b>	<b>\$739,698.93</b>

### Unscheduled Maintenance Trends

Number of Work Orders by Month



### Unscheduled Maintenance Trends

Work Order Hours By Month

