

**December 2015**

Derby Public Schools

# Performance Dashboard

---

## Derby High School

Martin Pascal, Principal

*“People without information cannot act. People with information cannot help but act.”*

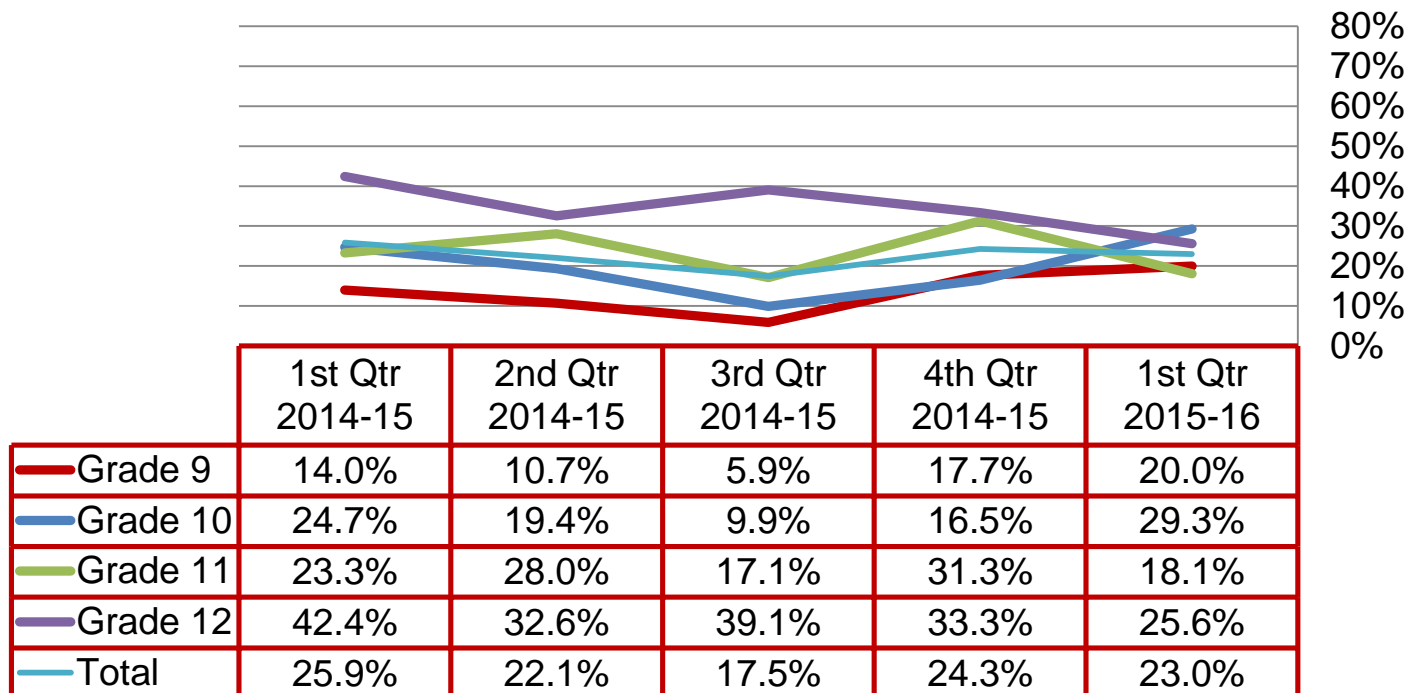
*Ken Blanchard*



# Quarterly Data

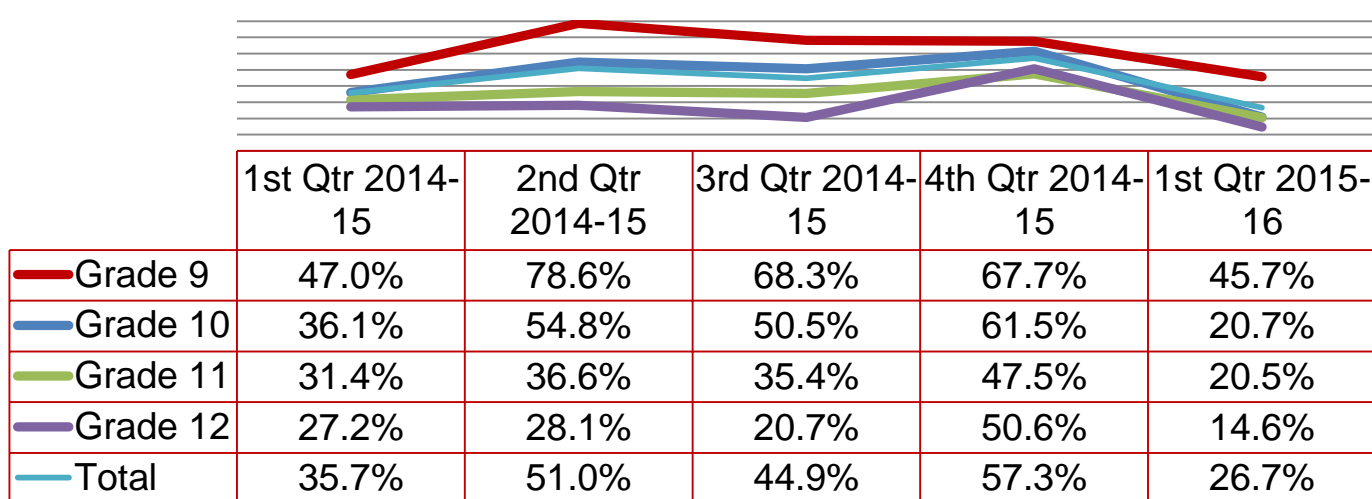
## High Grades

Percent of students earning 80% or above in all courses regardless of academic level:



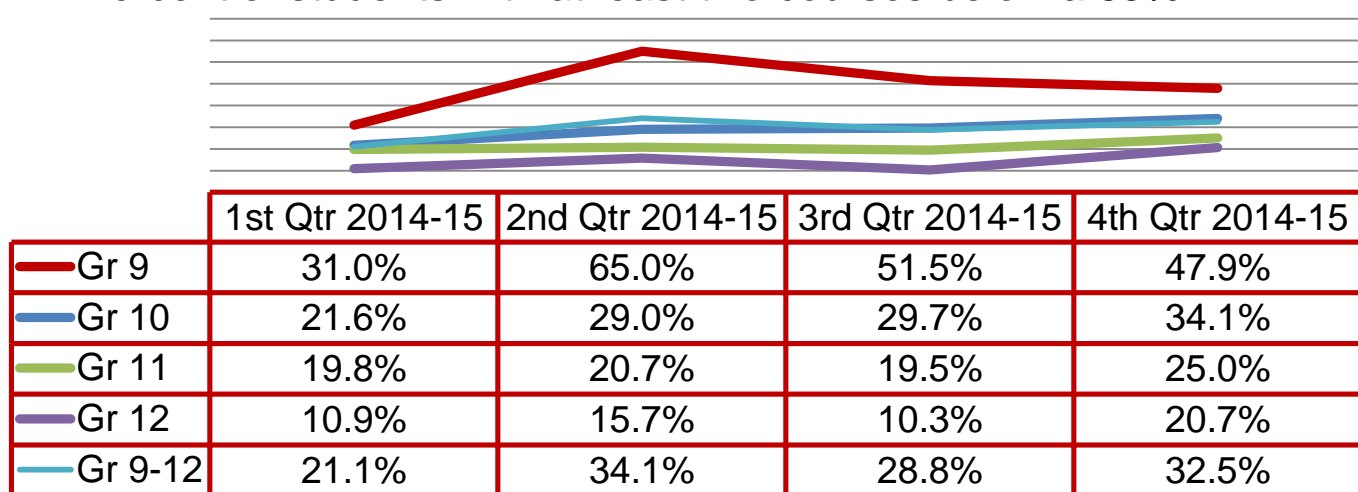
## Failing Grades

Percent of students with at least one course below a 65%:



## Failing Grades

Percent of students with at least two courses below a 65%:



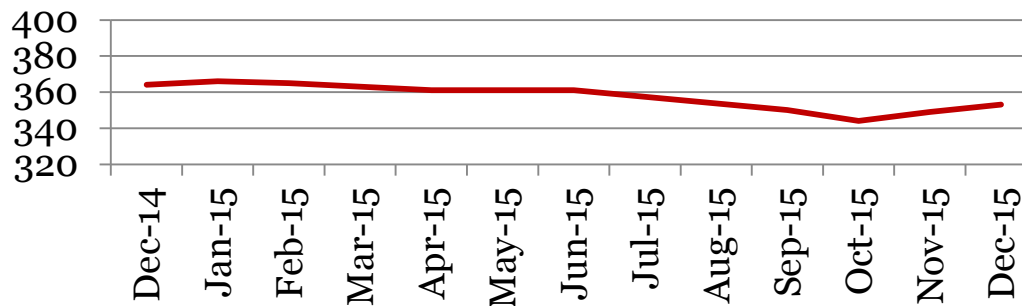
# Monthly Data

Derby High School

## Enrollment – 1<sup>st</sup> of the month

	9	10	11	12	Total
<b>Dec-15</b>	105	83	83	82	<b>353</b>
<b>Nov-15</b>	103	83	82	81	<b>374</b>
<b>Oct-15</b>	101	82	80	81	<b>344</b>
<b>Sep-15</b>	105	83	81	81	<b>350</b>
<b>Jun-15</b>	101	91	82	87	<b>361</b>
<b>May-15</b>	101	91	82	87	<b>361</b>
<b>Apr-15</b>	101	91	82	87	<b>361</b>
<b>Mar-15</b>	102	91	83	87	<b>363</b>
<b>Feb-15</b>	102	93	83	87	<b>365</b>
<b>Jan-15</b>	100	92	84	90	<b>366</b>
<b>Dec-14</b>	99	92	83	90	<b>364</b>

## Total School Enrollment

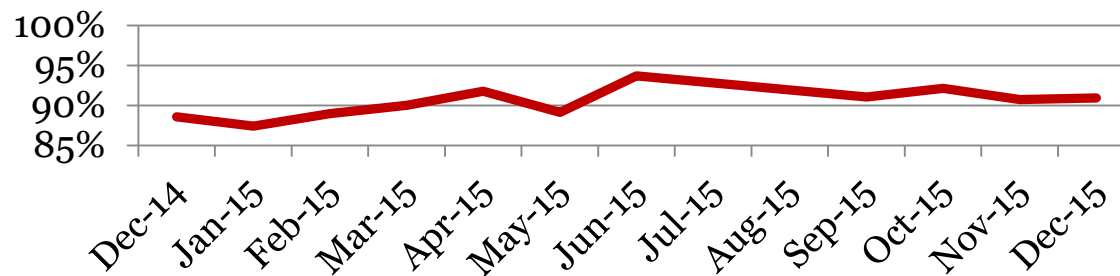


## Attendance – Students

Average daily percent present:

	<b>9</b>	<b>10</b>	<b>11</b>	<b>12</b>	<b>Total</b>
<b>Dec-15</b>	90	91	93	90	<b>91</b>
<b>Nov-15</b>	88	91	94	91	<b>91</b>
<b>Oct-15</b>	89	91	95	95	<b>92</b>
<b>Sep-15</b>	87	91	93	95	<b>91</b>
<b>Jun-15</b>	90	94	95	94	<b>94</b>
<b>May-15</b>	88	92	90	86	<b>89</b>
<b>Apr-15</b>	90	93	91	93	<b>92</b>
<b>Mar-15</b>	89	92	90	90	<b>90</b>
<b>Feb-15</b>	88	91	87	90	<b>89</b>
<b>Jan-15</b>	89	89	84	87	<b>87</b>
<b>Dec-14</b>	89	90	87	87	<b>89</b>

### Total Student Attendance

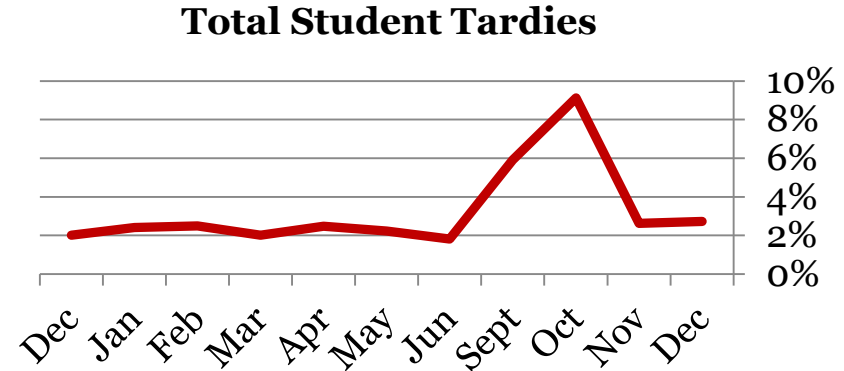


# Tardies

Average daily percent tardy:

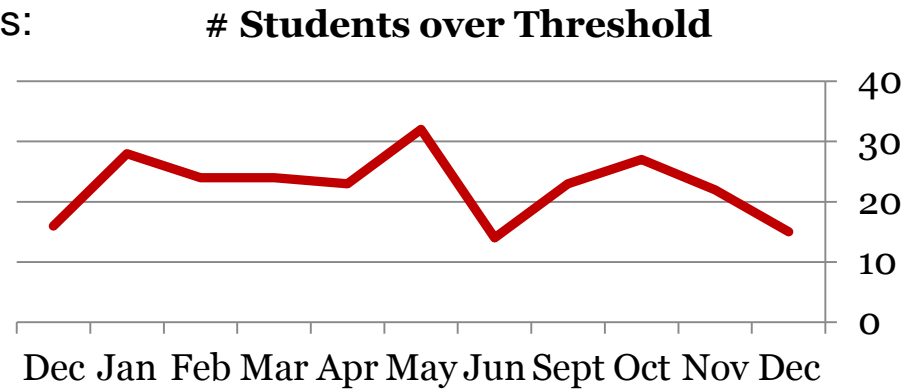
Derby High School

	9	10	11	12	Total
Dec -15	3	3	2	3	3
Nov -15	3	2	2	3	3
Oct-15	10	8	9	9	9
Sept-15	6	5	7	6	6
Jun-15	2	2	1	2	2
May-15	2	3	3	2	2
Apr-15	2	2	3	2	2
Mar-15	2	2	2	2	2
Dec-14	1	2	2	2	2



Number of students tardy 5 or more days:

	9	10	11	12	Total
Dec-15	8	3	1	3	15
Nov-15	8	2	4	8	22
Oct-15	9	6	7	5	27
Sept-15	8	6	4	5	23
Jun-15	3	4	5	2	14
May-15	8	9	10	5	32
Apr-15	4	10	6	3	23
Mar-15	9	8	3	4	24
Dec-14	3	5	5	3	16

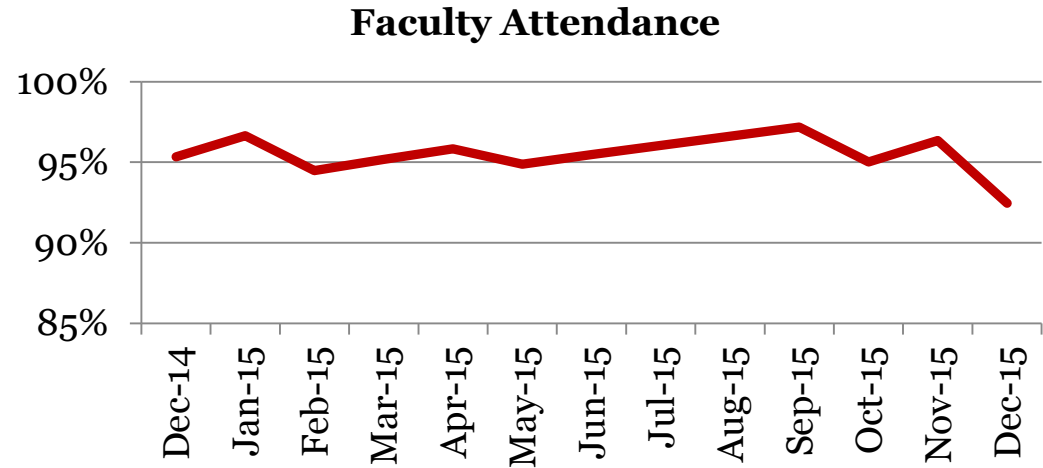


## Attendance – Faculty

Average daily percent present:

Derby High School

	Total
Dec-15	92
Nov-15	96
Oct-15	95
Sep-15	98
Jun-15	95
May-15	95
Apr-15	96
Mar-15	95
Feb-15	94
Dec-14	95



*\*This indicator reflects certified staff and does not include absences created by class trips, professional development, workman's comp and FMLA. However % may be reduced due to long term illness beyond FMLA.*

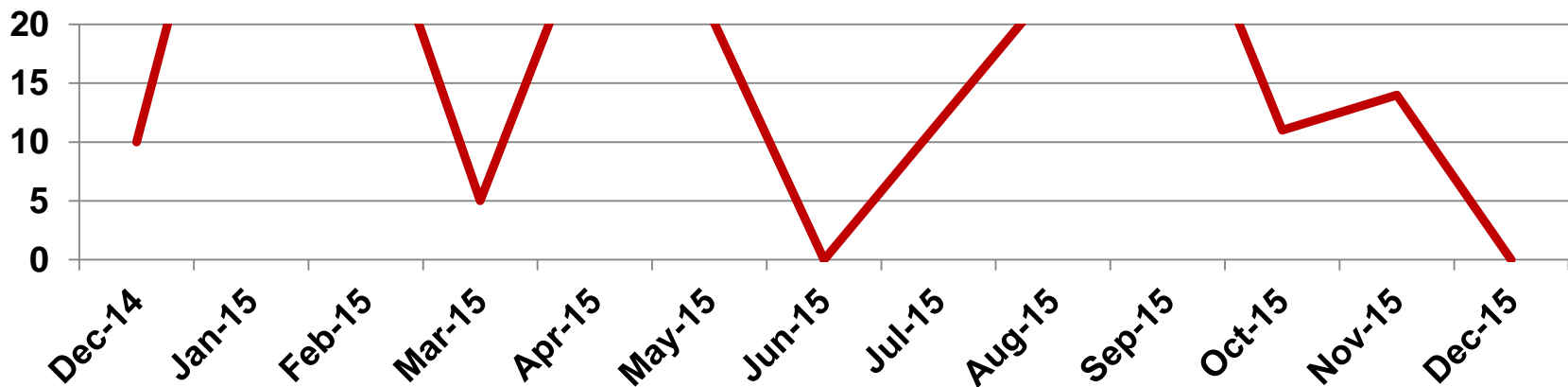
## Suspensions – Out of School

Derby High School

Number of student suspensions (total days of suspension):

	9		10		11		12		Total	
<b>Dec-15</b>	0	0	0	(0)	0	(0)	0	(0)	<b>0</b>	<b>(0)</b>
<b>Nov-15</b>	1	(10)	0	(0)	2	(4)	0	(0)	<b>3</b>	<b>(11)</b>
<b>Oct-15</b>	3	(9)	10	(2)	0	(0)	0	(0)	<b>13</b>	<b>(11)</b>
<b>Sep-15</b>	1	(10)	1	(5)	2	(20)	0	(0)	<b>4</b>	<b>(35)</b>
<b>Jun-15</b>	0	(0)	0	(0)	0	(0)	0	(0)	<b>0</b>	<b>(0)</b>
<b>May-15</b>	1	(3)	4	(17)	1	(1)	0	(0)	<b>6</b>	<b>(21)</b>
<b>Apr-15</b>	1	(5)	0	(0)	1	(2)	3	(23)	<b>5</b>	<b>(30)</b>
<b>Mar-15</b>	0	(0)	0	(0)	0	(0)	2	(5)	<b>2</b>	<b>(5)</b>
<b>Feb-15</b>	2	(20)	0	(0)	3	(13)	0	(0)	<b>5</b>	<b>(33)</b>
<b>Dec-14</b>	1	(10)	0	(0)	0	(0)	0	(0)	<b>1</b>	<b>(10)</b>

**Total Out of School Suspensions**



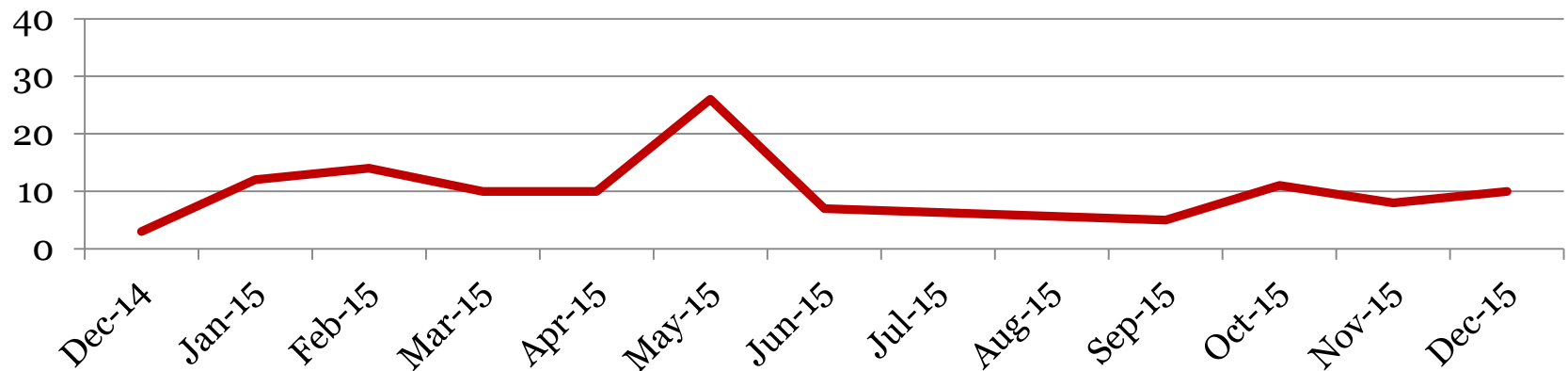


## Suspensions – In School

Number of student suspensions (total days of suspension):

	9		10		11		12		Total	
<b>Dec-15</b>	5	(7)	0	(0)	2	(3)	0	(0)	7	<b>(10)</b>
<b>Nov-15</b>	4	(4)	0	(0)	1	(1)	2	(3)	7	<b>(8)</b>
<b>Oct-15</b>	7	(8)	1	(1)	2	(2)	0	(0)	10	<b>(11)</b>
<b>Sep-15</b>	1	(1)	1	(2)	1	(1)	1	(1)	4	<b>(5)</b>
<b>Jun-15</b>	3	(3)	2	(2)	2	(2)	0	(0)	7	<b>(7)</b>
<b>May-15</b>	6	(6)	6	(7)	6	(6)	5	(7)	23	<b>(26)</b>
<b>Apr-15</b>	3	(4)	1	(1)	1	(1)	3	(4)	8	<b>(10)</b>
<b>Mar-15</b>	5	(5)	3	(3)	0	(0)	2	(2)	10	<b>(10)</b>
<b>Dec-14</b>	0	(0)	0	(0)	3	(3)	0	(0)	3	<b>(3)</b>

**Total In School Suspensions**



## Newly Enrolled Students

	<b>9</b>	<b>10</b>	<b>11</b>	<b>12</b>	<b>Total</b>
<b>Dec-15</b>	3	1	1	0	<b>5</b>
<b>Nov-15</b>	3	1	2	1	<b>7</b>
<b>Oct-15</b>	3	1	3	0	<b>7</b>
<b>Sep-15</b>	5	2	1	3	<b>11</b>
<b>Summer-15</b>	1	0	0	0	<b>1</b>
<b>Jun-15</b>	1	0	0	0	<b>1</b>
<b>May-15</b>	0	0	0	0	<b>0</b>
<b>Apr-15</b>	1	0	0	0	<b>1</b>
<b>Mar-15</b>	1	2	0	0	<b>3</b>
<b>Feb-15</b>	2	0	0	0	<b>2</b>
<b>Jan-15</b>	3	2	1	0	<b>6</b>
<b>Dec-14</b>	1	1	0	0	<b>2</b>

## Departing Students

Students who have left the school during the month for any reason:

	9	10	11	12	Total
<b>Dec-15</b>	0	1	0	1	<b>2</b>
<b>Nov-15</b>	1	2	0	0	<b>3</b>
<b>Oct-15</b>	0	0	2	1	<b>3</b>
<b>Sep-15</b>	6	10	1	1	<b>18</b>
<b>Summer-15</b>	1	1	0	0	<b>2</b>
<b>Jun-15</b>	2	0	0	0	<b>2</b>
<b>May-15</b>	1	0	0	0	<b>1</b>
<b>Apr-15</b>	0	0	0	0	<b>0</b>
<b>Mar-15</b>	2	2	1	0	<b>5</b>
<b>Feb-15</b>	2	2	0	0	<b>4</b>
<b>Jan-15</b>	1	1	2	1	<b>5</b>
<b>Dec-14</b>	<b>0</b>	<b>0</b>	<b>0</b>	<b>0</b>	<b>0</b>

## Dropouts

Student who discontinue schooling, leave for a GED program/Job Corp, or are disenrolled by grade level.

	9	10	11	12	Total
<b>Dec-15</b>	0	1	0	0	<b>1</b>
<b>Nov-15</b>	0	0	2	0	<b>2</b>
<b>Oct-15</b>	1	0	1	1	<b>3</b>
<b>Sept 2015</b>	0	0	1	1	<b>2</b>
<b>Summer-15</b>	0	0	0	0	<b>0</b>
<b>Jun-15</b>	0	0	0	1	<b>1</b>
<b>May-15</b>	0	0	0	0	<b>0</b>
<b>Apr-15</b>	0	0	0	0	<b>0</b>
<b>Mar-15</b>	0	1	0	0	<b>1</b>
<b>Feb-15</b>	0	1	0	0	<b>1</b>
<b>Jan-15</b>	0	0	2	0	<b>2</b>
<b>Dec-14</b>	<b>0</b>	<b>0</b>	<b>0</b>	<b>0</b>	<b>0</b>