

BHM Schools 24-25 Bond Projects

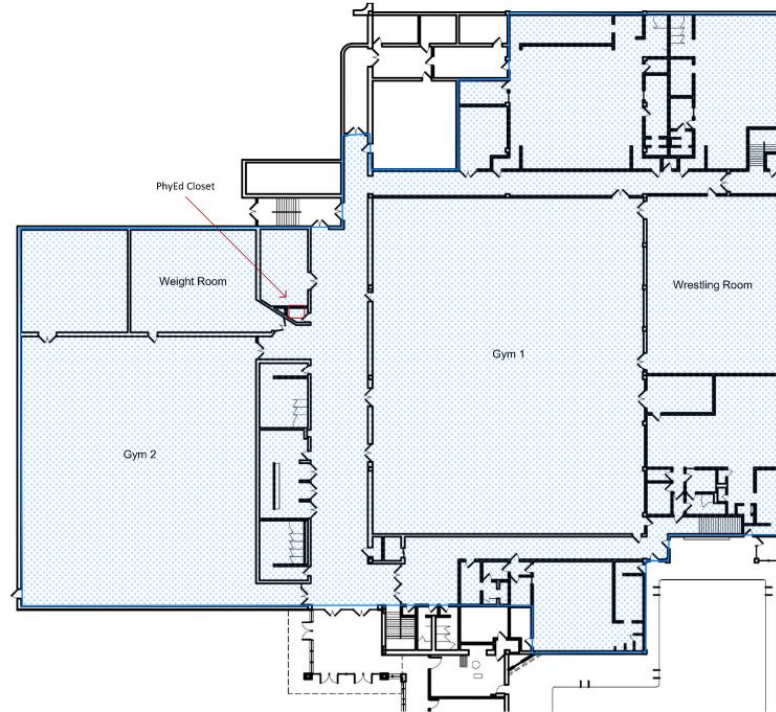
Buffalo Community Middle School
Buffalo High School
Discovery Elementary



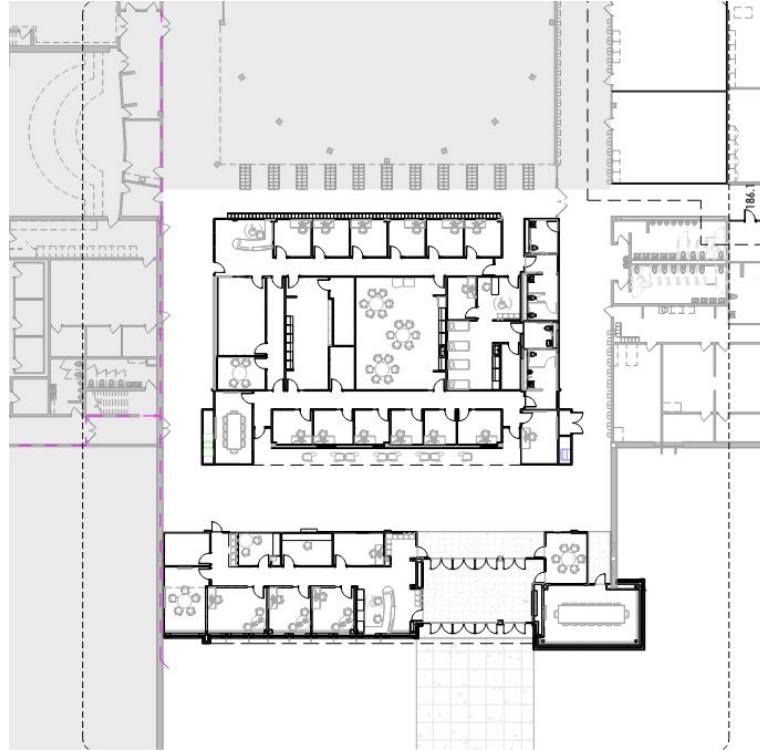
Buffalo Community Middle School



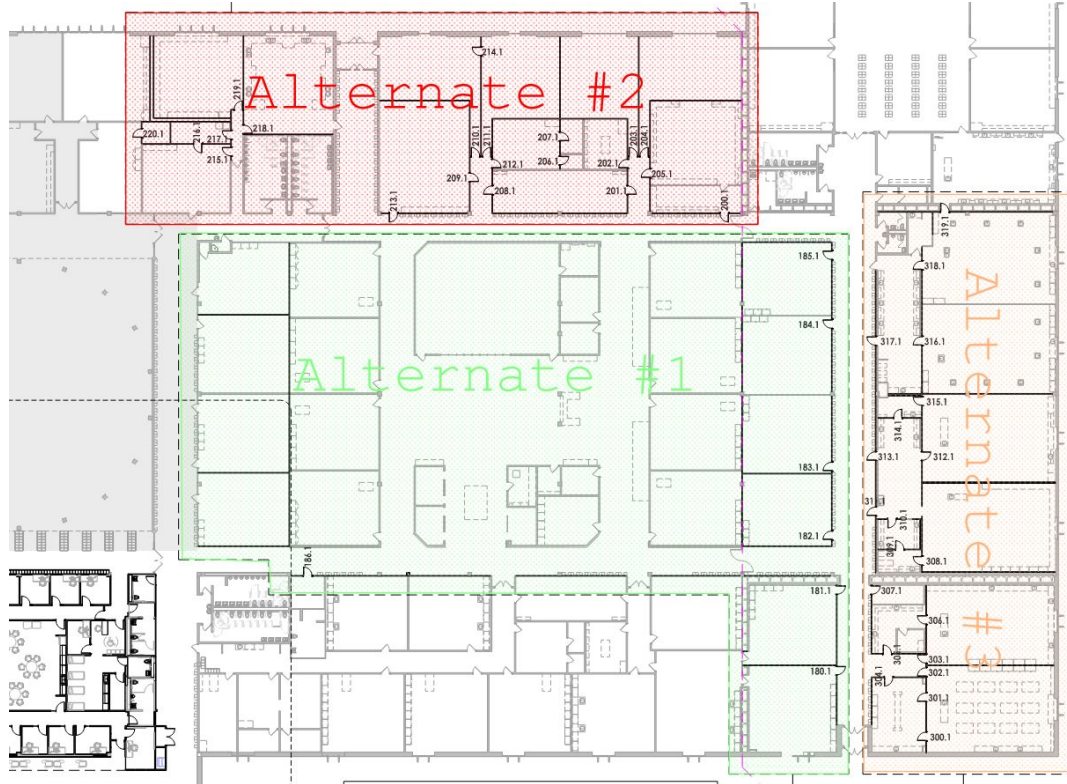
Areas served with the new chiller



New secured entrance, office suite and student service area remodel



3 Bid alternates (demountable Partitions)



Buffalo Community Middle School Project Information

Pre-bid site meeting with interested contractors to be held on October 2nd

Bid opening is scheduled for October 17th in the boardroom

Alternates 1, 2 and 3 are to remove the existing demountable partitions and construct new walls with conventional construction methods. Some layout revisions are included in the alternate plans.

Anticipated construction start in April with a completion of Phase 1 in October of '25. Phase 2 will be the summer of '26. Areas in each phase will be determined by the mechanical upgrade schedule.









Buffalo High School



Areas served with the new chiller

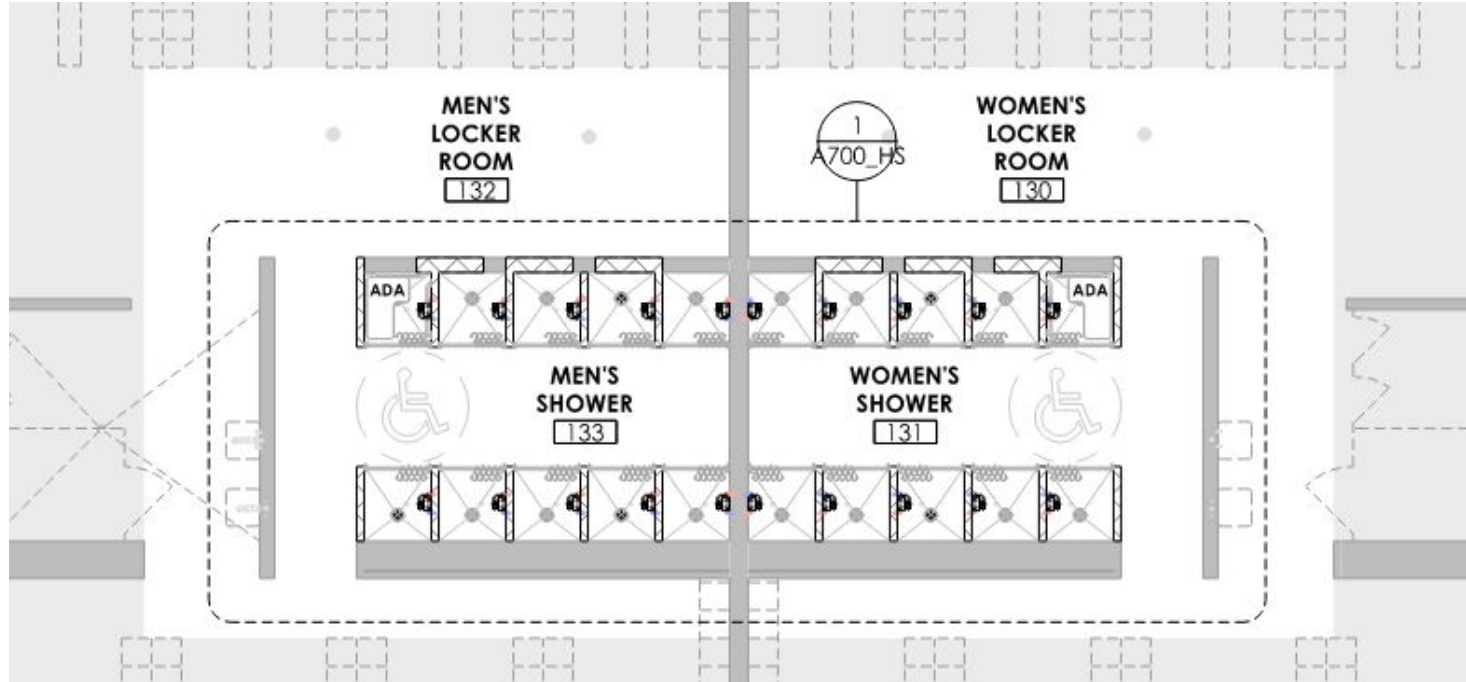


Existing offices (paint, carpet, ceilings)

-SRO in office 114

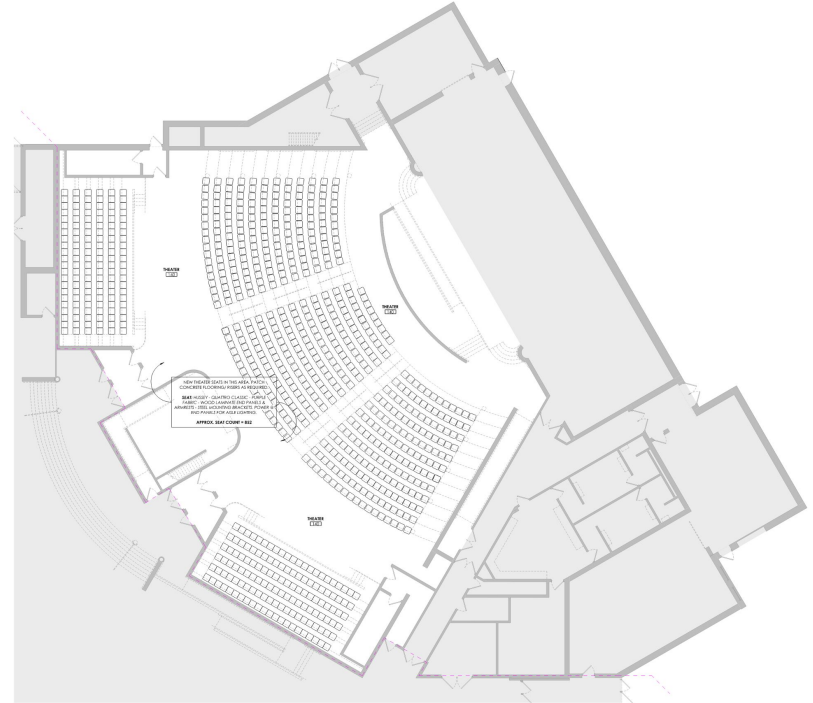


Single shower stalls

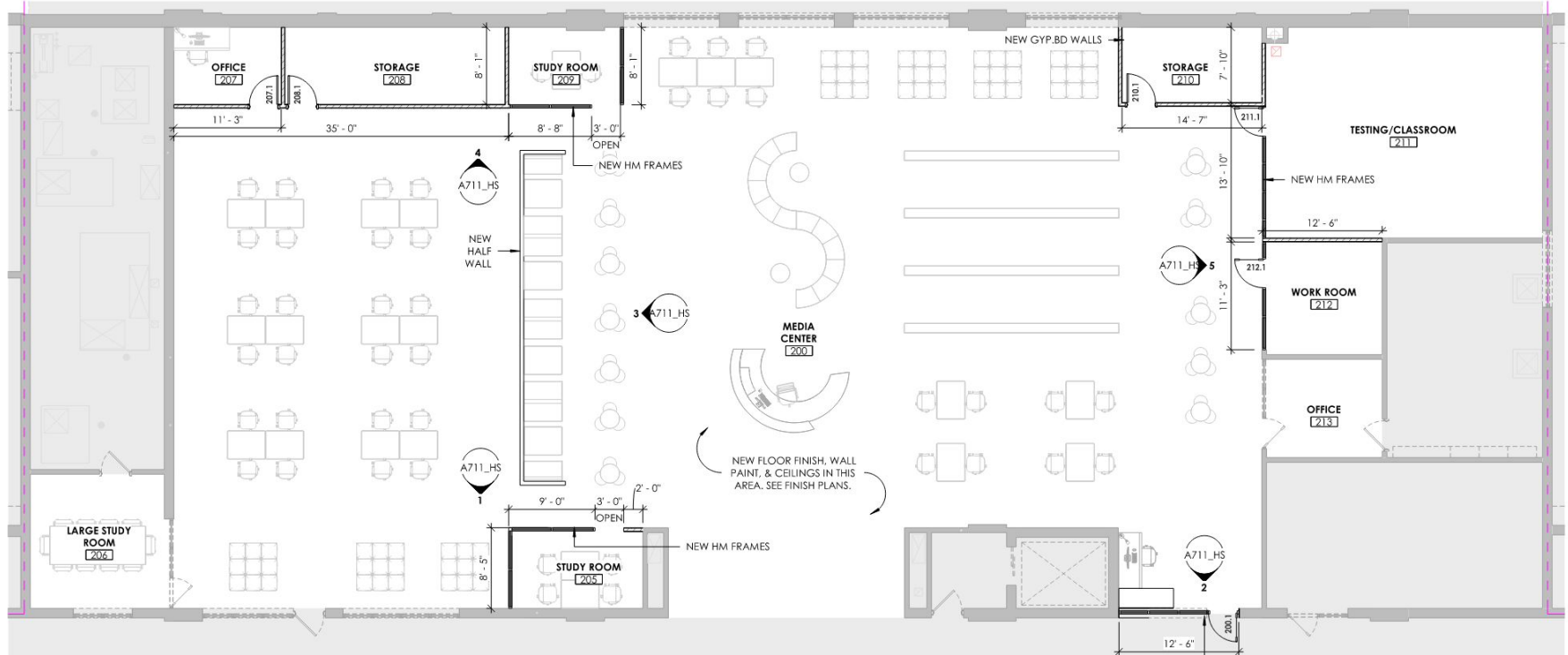


Performing Arts Center

- Curtains
- Lighting
- Seating
- Sound
- Risers

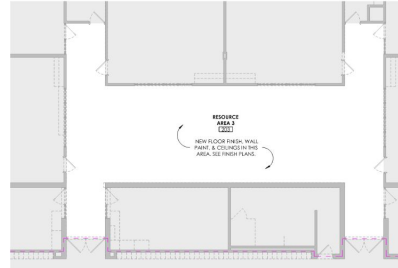


Media Center Remodel

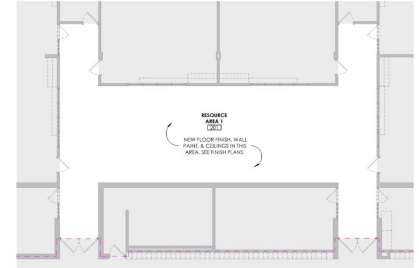


Resource area refresh

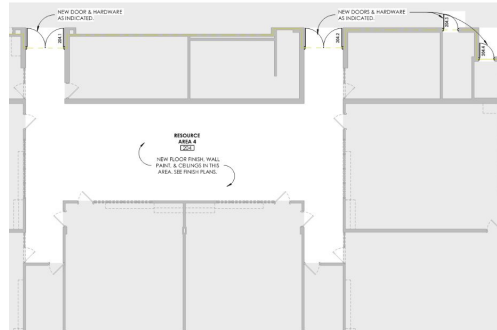
- Paint
- Flooring
- ceilings



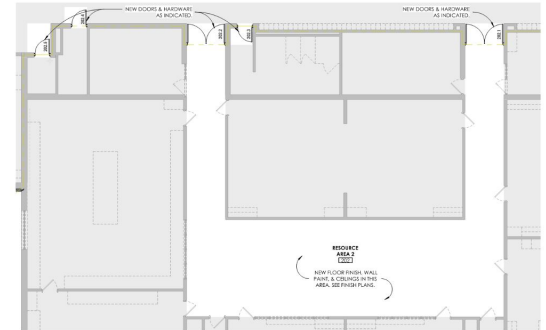
3 FLOOR PLAN - SECOND LEVEL - RESOURCE AREA 3
1/8" = 1'-0"



1 FLOOR PLAN - SECOND LEVEL - RESOURCE AREA 1
1/8" = 1'-0"



4 FLOOR PLAN - SECOND LEVEL - RESOURCE AREA 4
1/8" = 1'-0"



2 FLOOR PLAN - SECOND LEVEL - RESOURCE AREA 2
1/8" = 1'-0"

Buffalo High School Project Information

Pre-bid site meeting with interested contractors to be held on October 30th

Bid opening is scheduled for November 14th in the boardroom

Anticipated construction start in April with a completion in October of '25.







Discovery Elementary

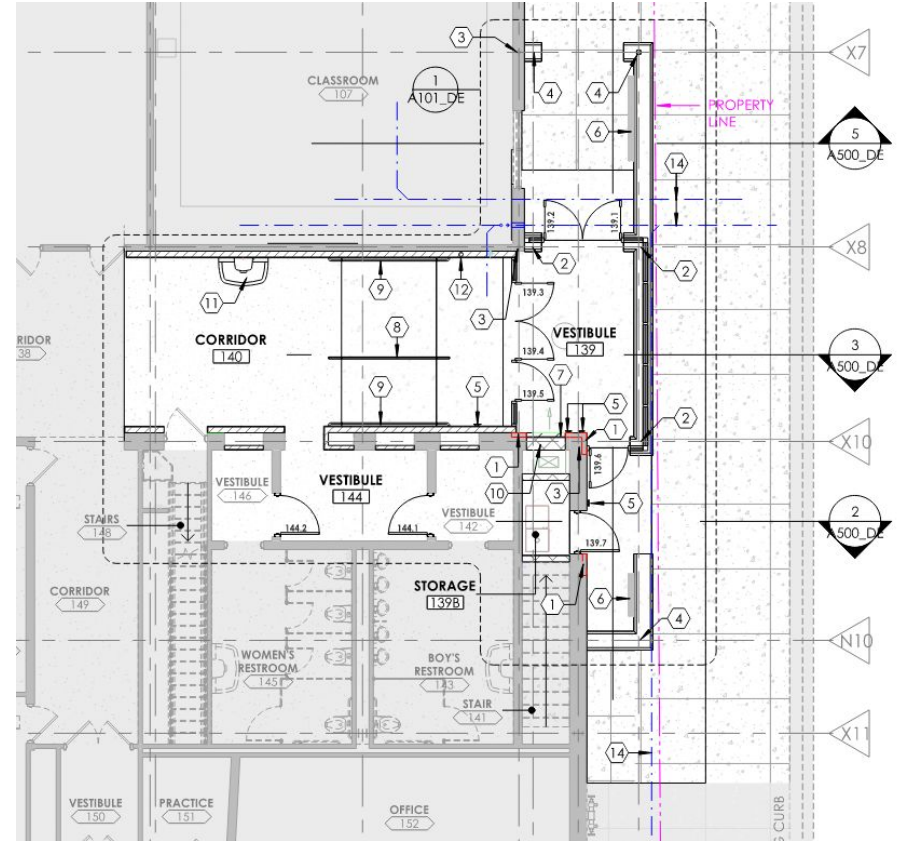


Door #6 Remodel

Create a new vestibule to keep rain water from intruding into the building.

There will be a ramp inside the building envelope to accommodate the elevation change.

Revise the entrance to the bathrooms to accommodate the new ramp.



Discovery Auditorium

Upgrades to curtains and lighting

DISCOVERY ELEMENTARY THEATRE **EQUIPMENT SPECIFIED BY SCHULER SHOOK** **DESCRIPTION**

SECTION 11 61 33 - THEATRE RIGGING	
(1)	Motorized winch and controls for Venetian curtain
<u>THEATRE CURTAINS</u>	
	New Venetian curtain at stage apron to replace existing
	New backdrop and walk-along track to replace existing
SECTION 26 09 61 - THEATRICAL LIGHTING CONTROL	
	Production, house and work lighting control system
(40)	20A relays within existing dimmer racks
	House and work light control system, preset stations
(0)	Emergency lighting transfer switches
<u>THEATRICAL LIGHTING POWER & DATA DISTRIBUTION</u>	
	Wiring devices including power and data receptacle boxes
(0)	Auxiliary power disconnects
(0)	Isolated audio disconnects
<u>PORTABLE LIGHTING FIXTURES & ACCESSORIES</u>	
	Lighting control console, monitors, accessories
(0)	LED Profile Spotlights
(20)	LED Par/Wash Lights
(0)	LED Cyc or Strip Lights
(12)	LED Work Lights
(0)	Automated fixtures, control cable, accessories
(0)	Follow spots
(1)	Lot lighting cable, accessories

Discovery Elementary School Project Information

Pre-bid site meeting with interested contractors to be held on October 30th

Bid opening is scheduled for November 14th in the boardroom

Anticipated construction start in June with a completion in August of '25.