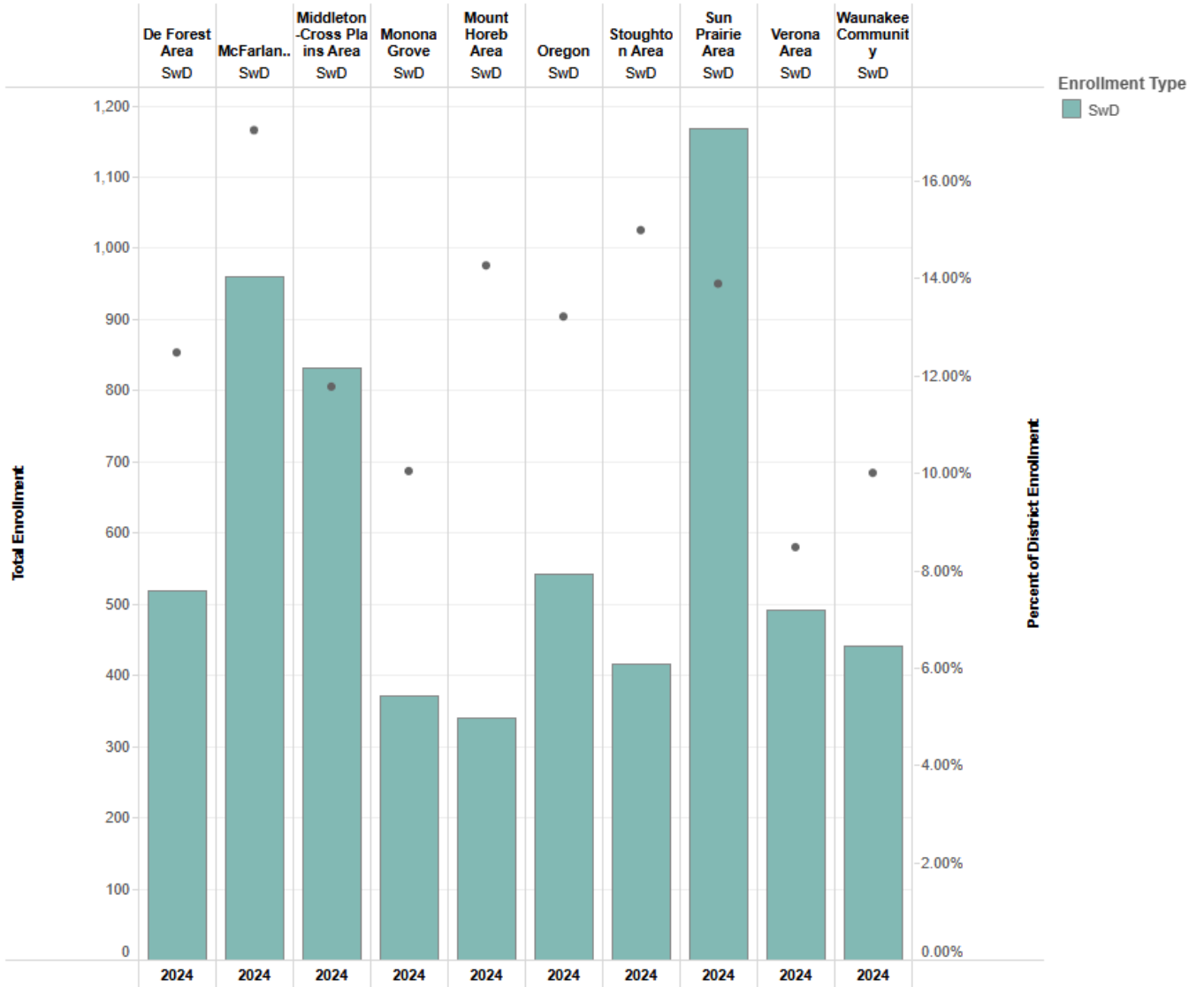


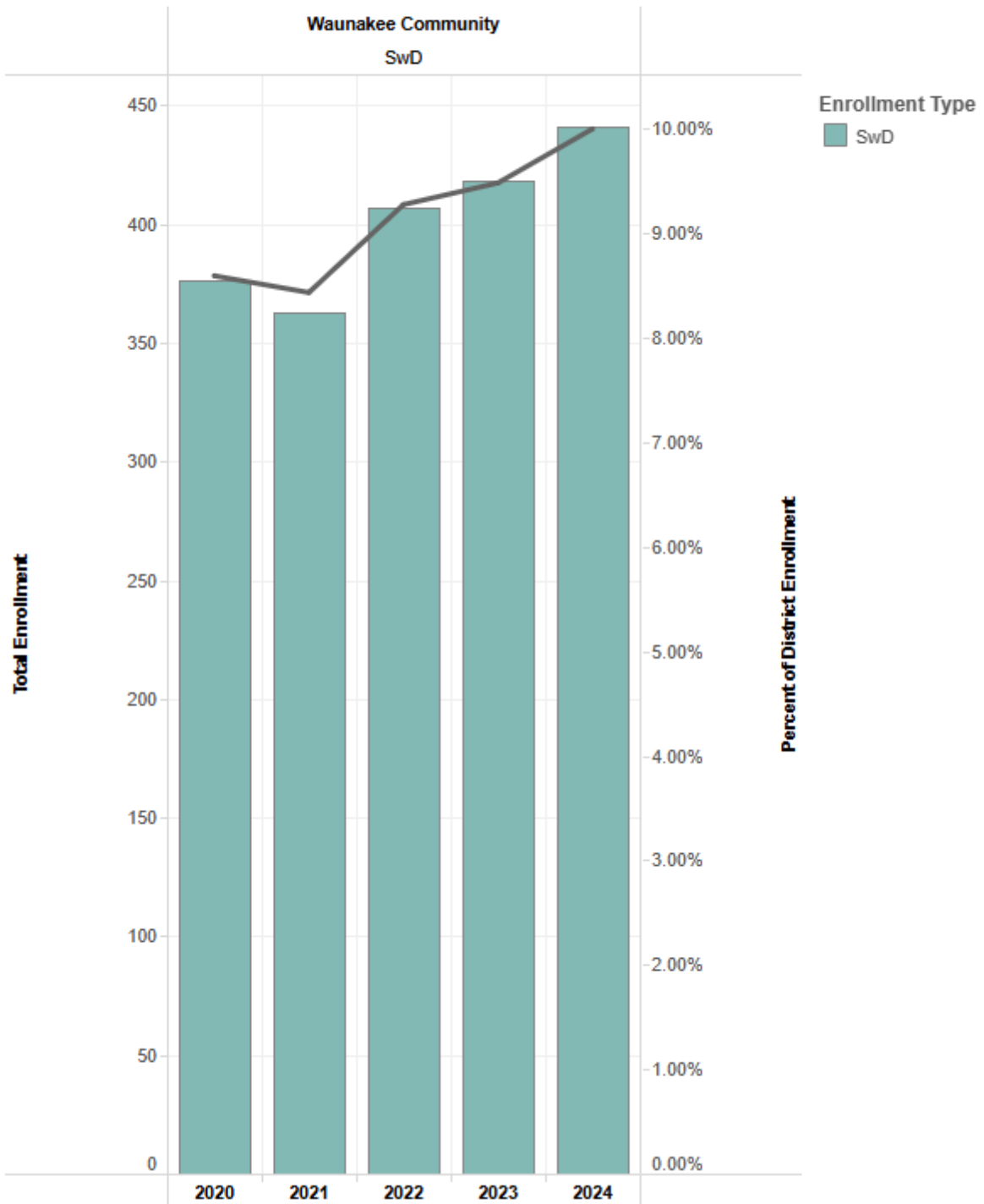
Student Group Enrollment Breakdown - District

Source: DPI

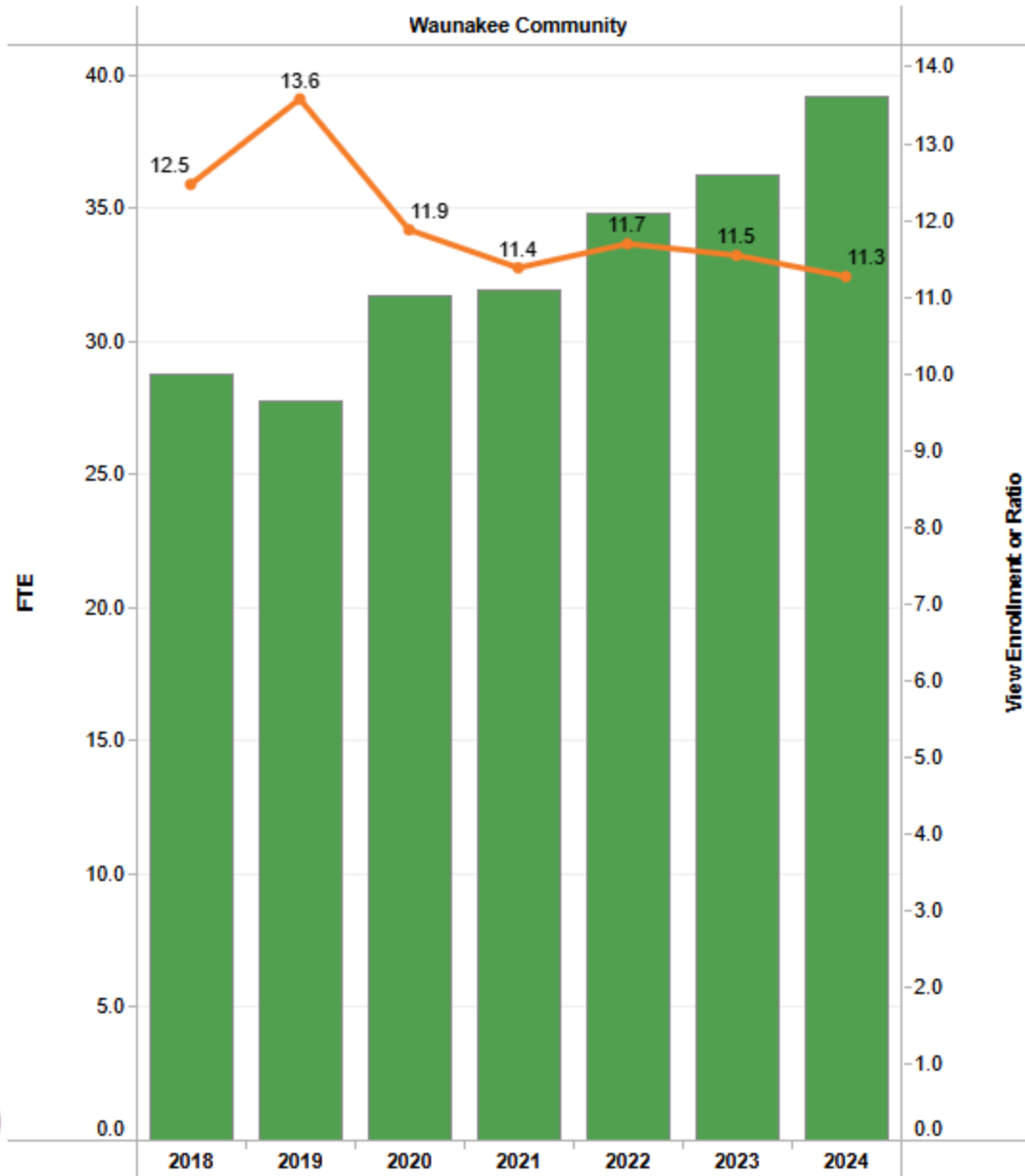


Student Group Enrollment Breakdown - District

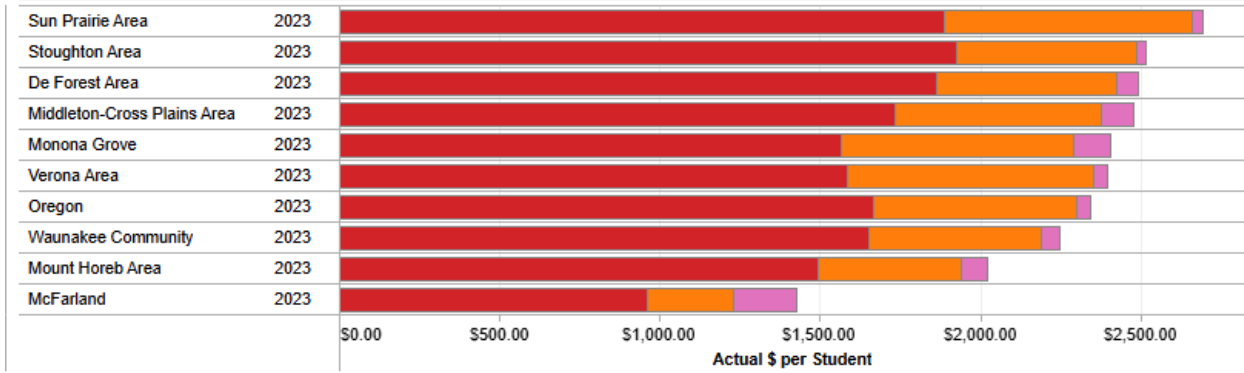
Source: DPI



Staffing Ratios Breakdown
Special Education FTE and Student/Staff Ratio
District(s): Waunakee Community
Position(s): Teacher
Source: DPI PI-1202



Expenditures by Function Per Student



Object

- 900 Other Objects
- 800 Transfers
- 700 Insurance and Judgments
- 600 Debt Retirement
- 500 Capital Objects
- 400 Non-Capital Objects
- 300 Purchased Services