



Strategic Footprint Planning Team

2024-2025

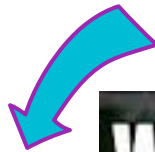


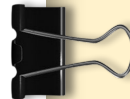
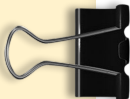
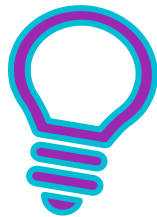
We are thrilled you are here!

Introductions - Name, rank,
serial number.

Please find a buddy.

Share two good things!







Begin with the end in mind.

Abilene will be the premier district in the Big Country

Offer Innovative Programs through efficient use of facilities.

Ensure maximum use of resources, staff, and programs

Increase the percentage of students who attend a school offering a robust innovative student and staff experience.

Minimize long term negative impacts of shrinking our operational footprint

Engage students, families, staff and community of impacted schools





Non Negotiables.

The plan must end with a more substantial student experience.

Everyone keeps their job in Abilene ISD as we move through the plan.

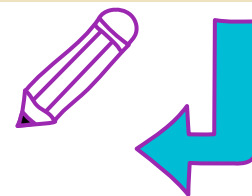
All ideas are good ideas and not an attack on any person, program, or campus.

Innovation is key to the process and is welcomed.

Community input will grow our group as we narrow the ideas.

Yoda said, “do or do not, there is no try.”





Our Roadmap

01 - July 23

Norms,
End in Mind,
What do you need?



02 - August 7

Innovative Ideas,
SGS,
Resources



03 - September 10

What Campuses
would benefit from
Innovative Ideas?

04 - October 8

Decision Point
Create Timeline
Initiate Problem
Solving



05 - November 5

Community
Feedback
Continue Problem
Solving

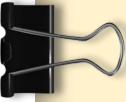


06 - November 19

Fine Tune
Recommendation
for the Board
(December Meeting)



Community Members

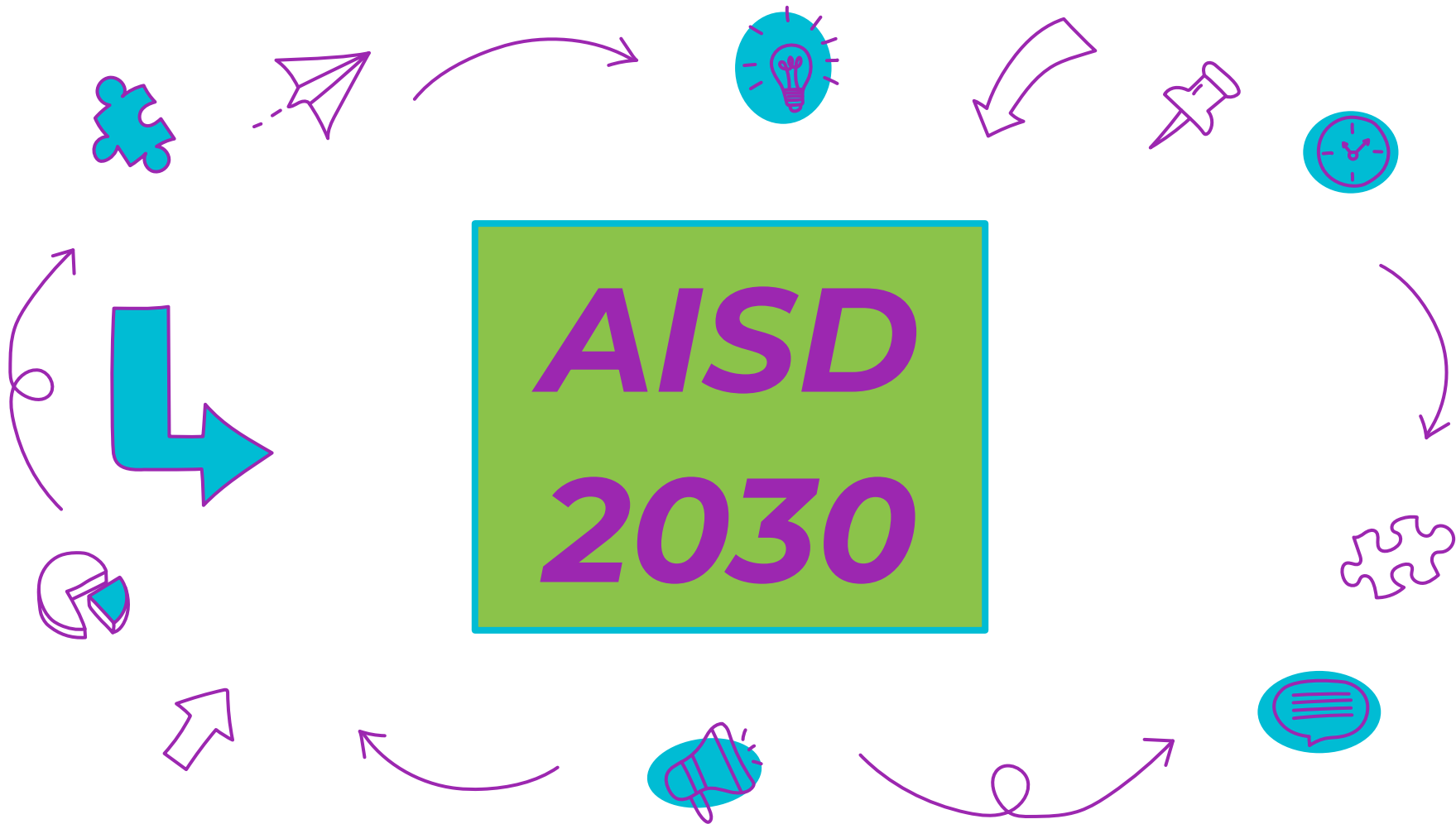






**What do you
think about this?**

AISD 2030





We will make a list and assign an owner

There are SIX Giant Posters
Brainstorm



- ▶ We like?
- ▶ We don't like?
- ▶ What about this?
- ▶ I need this...

10-15 minutes

Gallery Walk

Two Times Around

1st - Place a dot

Green - Love this idea!

Yellow - Need information

2nd - Ownership





Divide your poster like this



We like...

We don't like...

What about this...

I need this...

✓	—
✓	—
✓	—
✓	—





We like...

We don't like...

What about this...

I need this...



What we like

- innovative Programs added
- 9th grade Acad

Don't like

Transportation
too many facilities

What about...

- Addressing Pre-K needs
- employee day care
- NO boundary lines?
- Specializing MS (Fine Arts, Athletic, STEM, CTE)
- Could we add more than 4th-5th? (reducing them)
- Research to support 9th being separated?
- What are the benefits of one HS vs two?
- What about more innovative programs @ M.S.
- Bond Election

Need to know

Self-Kind



At our Next Meeting...



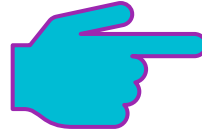
System of Great Schools and 1st Look at Feedback





Resources go in this folder:
<https://bit.ly/Footprint2024>

Or use this





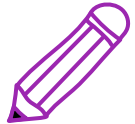
THANK YOU!



Let us help you?







joseph.waldron@abileneisd.org

karen.munoz@abileneisd.org



Editable Icons





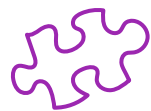
Very interesting **FACTS**

PANDAS DON'T HIBERNATE.



When winter approaches, they head lower down their mountain homes to warmer temperatures, where they continue to chomp away on bamboo!





CATS LOVE TO SLEEP.

A fifteen-year-old cat has probably spent ten years of its life sleeping.

Also, cats use their whiskers





SOME FACTS ABOUT MY CATS.

100%

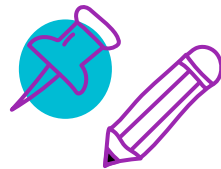
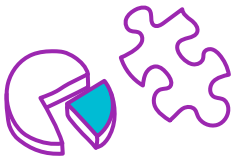
Of my cats are
adorable.

25%

Traveled by
plane. Twice!

75%

Are females.





LET'S REVIEW SOME FACTS.



Elephants

Elephants can sense storms.

Pandas

Pandas don't hibernate.

Cats

Cats use their whiskers as feelers

Dogs

Dogs can smell your feelings.

Kangaroos

There are more kangaroos than humans in Australia.

Koalas

Koalas are even more lazy than cats.



THIS IS OUR TEAM.



Erika V.

Lorem ipsum dolor sit
amet, consectetur
adipiscing elit.
Aenean commodo
ligula eget dolor.



John S.

Lorem ipsum dolor sit
amet, consectetur
adipiscing elit.
Aenean commodo
ligula eget dolor.



Marie M.

Lorem ipsum dolor sit
amet, consectetur
adipiscing elit.
Aenean commodo
ligula eget dolor.



THIS IS AN EDITABLE WORLD MAP

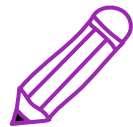


Showcase places

You can use maps to show your offices or markets. Or as charts, highlighting the countries and adding your data.

100% Editable

You can double click on the desired country and change fill color.





AND THIS IS A TIMELINE



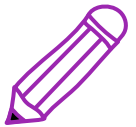
Lorem ipsum
dolor sit
amet,
consectetuer
adipiscing
elit.

Lorem ipsum
dolor sit
amet,
consectetuer
adipiscing
elit.

Lorem ipsum
dolor sit
amet,
consectetuer
adipiscing
elit.

Lorem ipsum
dolor sit
amet,
consectetuer
adipiscing
elit.

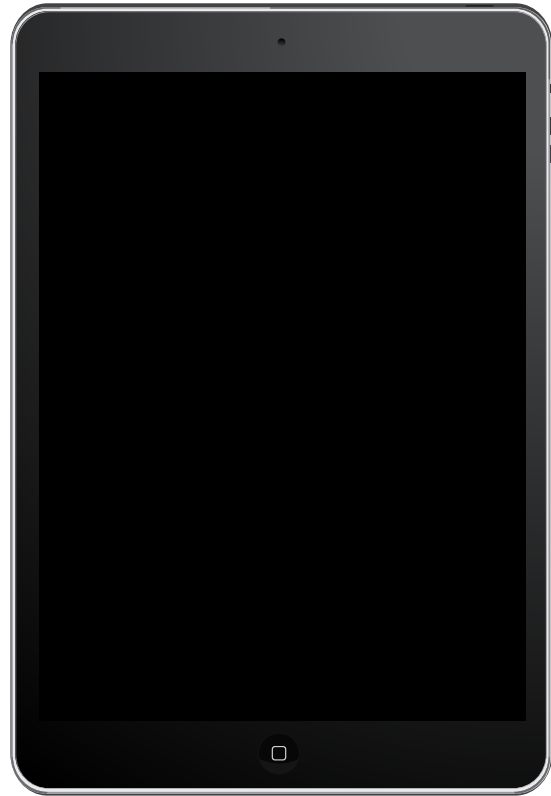
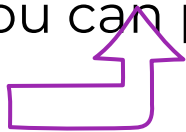
Lorem ipsum
dolor sit
amet,
consectetuer
adipiscing
elit.

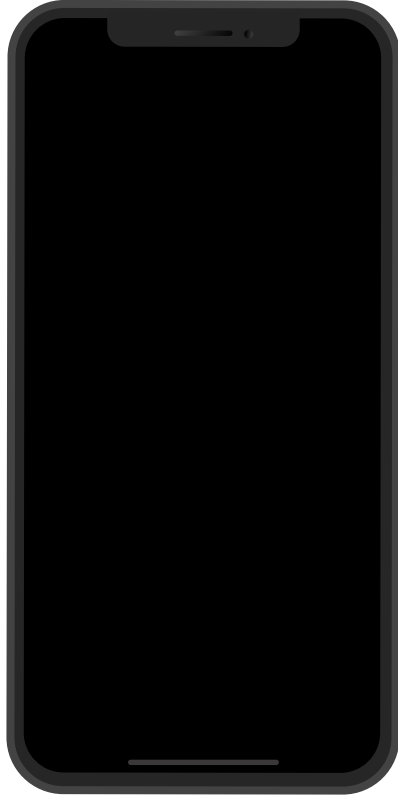




PRESENTING A WEBSITE OR AN APP?

If you are presenting a website,
an internet product or an app,
you can place a screenshot of it
here.





PRESENTING A WEBSITE OR AN APP?

If you are presenting a website, an internet product or an app, you can place a screenshot of it here.



CREDITS.



Presentation Template: [SlidesMania](#)

Sample Images: [Insplash](#)

Fonts used in this presentation:
Roboto



Free themes and templates for
Google Slides or **PowerPoint**

NOT to be sold as is or modified!

Read [FAQ](#) on slidesmania.com

Do not remove the slidesmania.com text on the sides.

Sharing is caring!



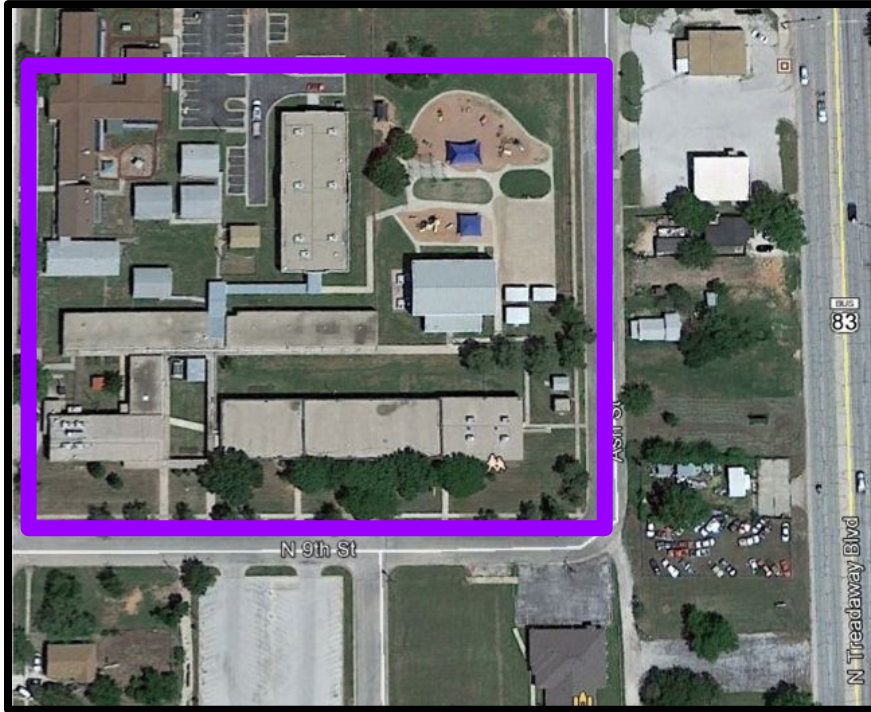
Fannin Elementary



- ▶ **2726 N. 18th Street**
- ▶ **Built: 1951/1953**
- ▶ **39,240 sq. ft.**
- ▶ **Storage - Graduation ramp, lectern, risers for Craig, stage for Clack and Craig, surplus furniture**

Identified as “surplus” property in 2010 Master Facility Plan which resulted in the disposition/sale of Lincoln, Valley View, Houston, Travis and College Heights. City acquired B&G Club facility for health services site. In addition, City acquired bulk of land surrounding Fannin in exchange for park land adjacent to Bowie Elementary.

Woodson Early Childhood



- ▶ **520 N. 9th Street**
- ▶ **Built: 1936/1958/1998**
- ▶ **41,640 sq. ft.**
- ▶ **Storage - Gym only - surplus cafeteria tables and CTE**
- ▶ **Viable learning space - only 1998 section**

2012 Facilities Assessment - Further investment...into the original classroom building, cafeteria and LRC should be carefully considered due to the age of the facility and the amount of funding required in bringing the facility condition index up to an acceptable rating.

Surplus Property - Potential Actions



Abilene ISD
221901

OTHER REVENUES
SALE, LEASE, OR EXCHANGE OF SCHOOL-OWNED PROPERTY

CDB
(LEGAL)

Note: For legal requirements applicable to the disposition of real property acquired with federal funds, see CBB.

Sale or Exchange of Real Property

A board may, by resolution, authorize the sale of any property, other than minerals, held in trust for free school purposes. The board president shall execute a deed to the purchaser reciting the board resolution authorizing the sale. A district may employ, retain, contract with, or compensate a licensed real estate broker or salesperson for assistance in the acquisition or sale of real property. *Education Code 11.154*

Surplus Property - Potential Actions



Donation of Former School Campus

The board may, by resolution, authorize the donation of real property and improvements to a governmental entity, a nonprofit organization, or nonprofit

Before adopting the resolution,

concerning the donation
hearing by publishing the

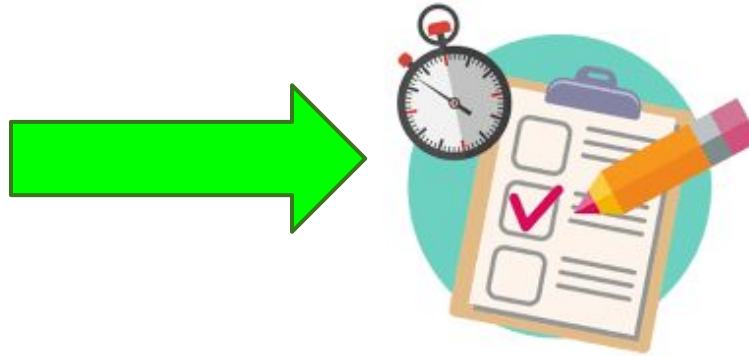
subject matter, location, date, and time of the hearing in a newspaper having general

board holds a public hearing

b. The transfer will further the preservation of the improvements; and

c. At the time of the transfer, the entity does not need the real property or
improvements; and

3. The entity gives notice shown, to the satisfaction of the board, that
the entity intends to continue to use the real property and improvements for public
purposes.



Step 1



**RESOLUTION AUTHORIZING THE INITIATION OF
PROCEEDINGS FOR THE SALE OF REAL PROPERTY**

FORMER TAYLOR ELEMENTARY SCHOOL

WHEREAS, the Board of Trustees (the “Board”) of the Abilene Independent School District (the “District”) is authorized by Texas Education Code § 11.151 to govern and oversee the management of the public schools in the District; and

WHEREAS, under Texas Education Code § 11.151(c), all rights and titles to the real property of the District are vested in the Board and their successors in office; and

Step 2

 **Done!**

An Appraisal Report
of the

Taylor Elementary School
located at 916 EN 13th Street
Abilene, Taylor County, Texas 79601

Step 3

COMING SOON



Step 4

COMING SOON

RESOLUTION AUTHORIZING THE SALE OF REAL PROPERTY ~~EXISTING TAYLOR~~ ELEMENTARY SCHOOL

WHEREAS, the Board of Trustees (the “Board”) of the Abilene Independent School District (the “District”) is authorized by Texas Education Code § 11.51 to govern and oversee the management of the public schools in the District;

WHEREAS, under Texas Education Code § 11.151(c), all rights and titles to the real property of the District are vested in the Board and their successors in office;

WHEREAS, pursuant to Texas Education Code §§ 11.151(c) and 11.154(a), the Board may dispose of property that is no longer necessary for the operation of the District and may, by resolution, authorize the sale of such property;

Step 5

COMING SOON



Step 6

COMING SOON

(Space Above)

REAL ESTATE DEED

REAL ESTATE DEED, made by _____
to _____ individually

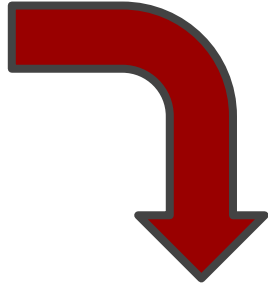
Step 7

COMING SOON

CLOSING

a

Upcoming



- ▶ **Bid, Evaluation, Present to Board on Fannin's Process**
- ▶ **Ongoing Process for Woodson EC**



Dr. Joseph Waldron
Deputy Superintendent

Update - Surplus Property

July 2024