



Denton Independent School District

WINDLE

Am Windle School For Young Children



And

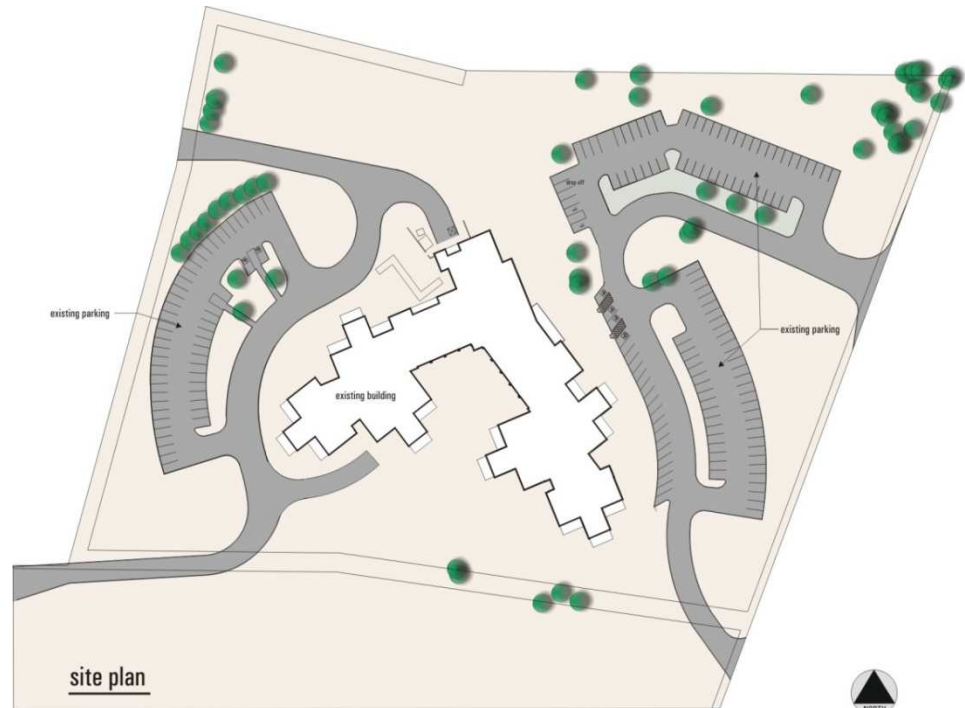
Denton ISD Employee Day Care Center

May 27, 2008

C O R G A N

Existing Ann Windle School Site Plan

- 41,200 sf.
- Built 2000
- 18 Classrooms
- Current enrollment – 315 students



BUDGET ANALYSIS



BUDGET ANALYSIS

- 2004 – BOND PROGRAM
 - \$ 6,000,000
- 2007 – BOND PROGRAM
 - \$ 2,000,000
- THE ABOVE BUDGETS ARE TOTAL COSTS INCLUDING ALL DEVELOPMENT COSTS, FFE, A/E FEES, CONSTRUCTION COSTS, PERMITS, TECHNOLOGY, ETC.

site plan



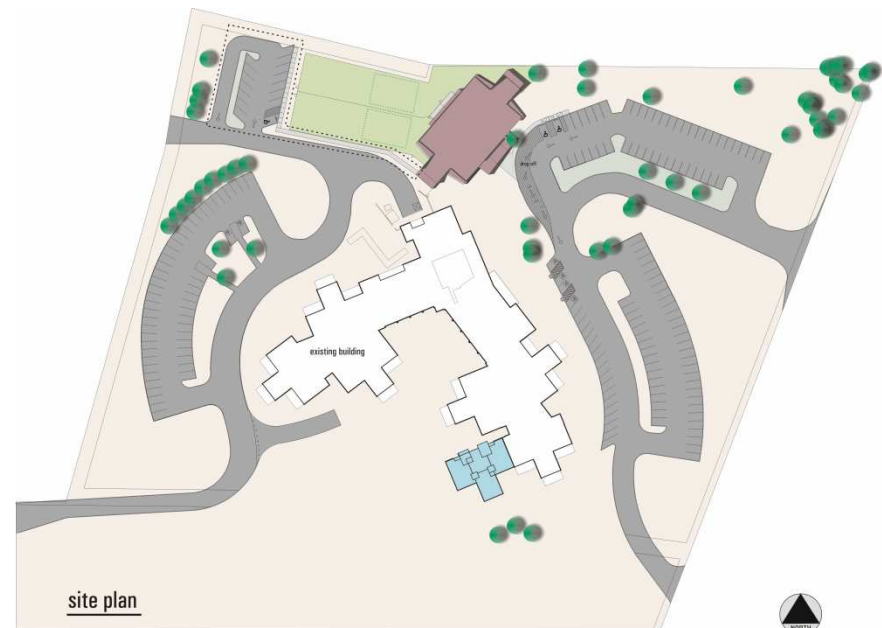
PROPOSED OPTION 1



PROJECT DETAILS (Option 1)

- **Scope:**
 - Add 3 Classrooms
 - Adds space for 45 new students.
- **Cost:**

▪ Construction	= \$1,280,000
▪ FFE / Fees / Permits	= \$220,000
▪ Total Costs	<hr style="width: 100%; border: 0.5px solid black; margin: 0;"/> <u>= \$1,500,000</u>
- **Schedule:**
 - Design – June 2008 – Aug. 2008
 - Construction – Sept. 2008 – March 2009
 - Open for students – April 2009



PROPOSED OPTION 2



PROJECT DETAILS (Option 2)

Scope:

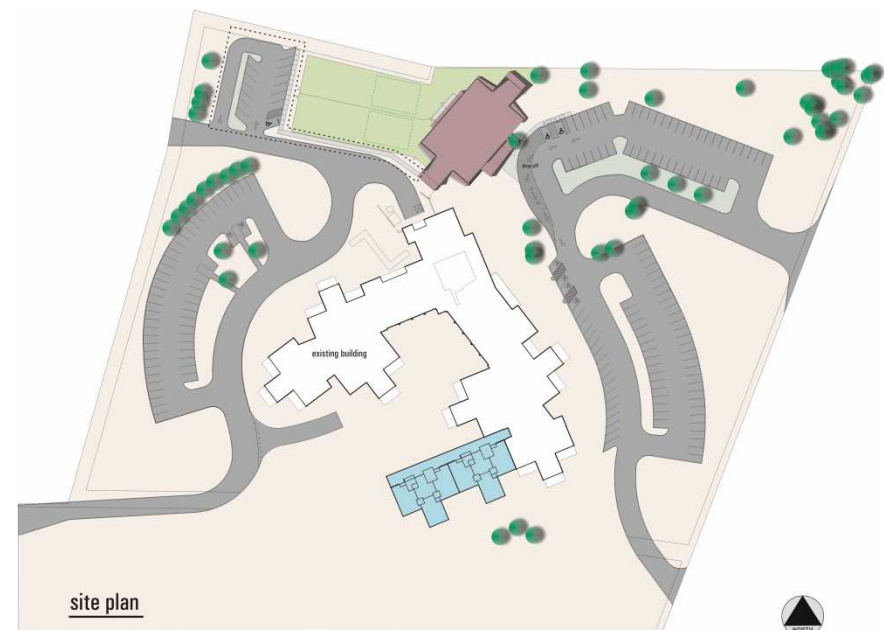
- Add (6) Classroom addition
- Adds space for 90 new students
- Existing playgrounds will be relocated.

Cost:

Construction	=	\$2,480,000
Playground relocation	=	\$100,000
FFE / Fees / Permits	=	\$275,000
Total Costs	=	\$2,855,000

Schedule:

- Design – June 2008 – Aug. 2008
- Construction – Sept. 2008 – April 2009
- Open for students – Aug. 2009



PROPOSED OPTION 3



PROJECT DETAILS (Option 3)

Scope:

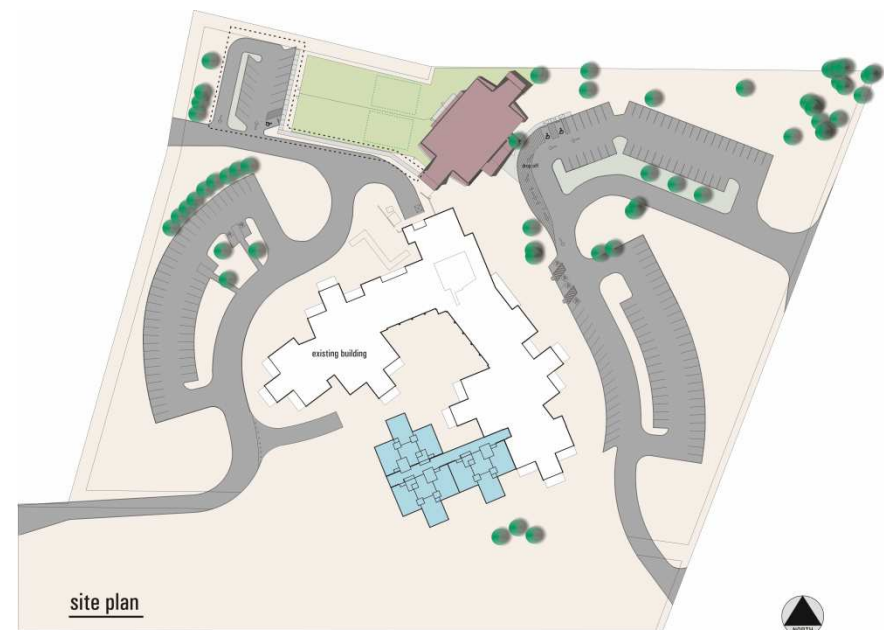
- Add (9) Classroom addition
- Adds space for 140 new students
- Existing Playground(s) will be relocated

Cost:

Construction	=	\$3,600,000
Playground(s) relocation	=	\$100,000
FFE / Fees / Permits	=	\$400,000
Total Costs	=	\$4,100,000

Schedule:

- Design – June 2008 – Aug. 2008
- Construction – Sept. 2008 – May 2009
- Open for students – Aug. 2009



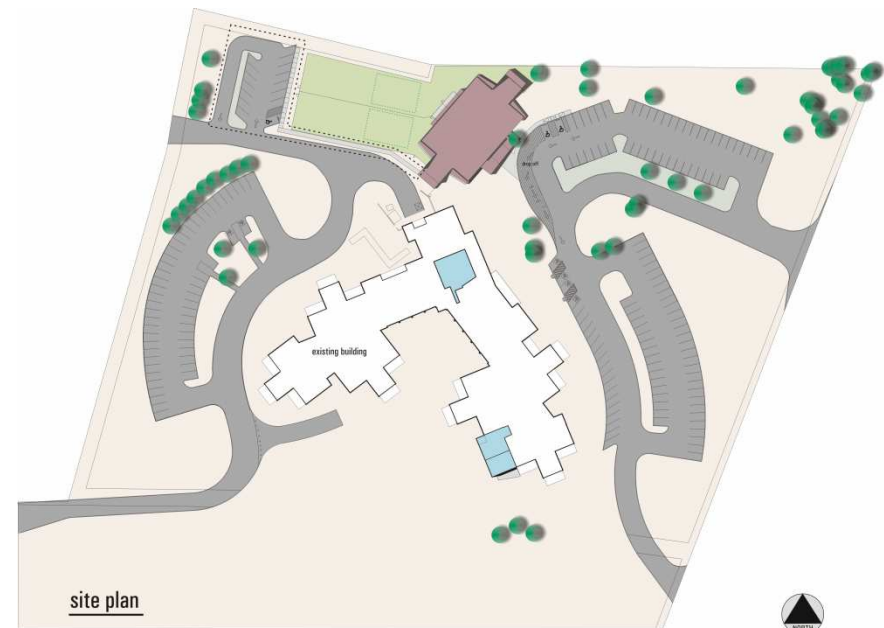
PROPOSED OPTION 4



PROJECT DETAILS (Option 4)

- Scope:
 - New Library addition and Parent Resource Room Renovations @ Ann Windle School for Young Children
- Cost:

▪ Library Addition	= \$600,000
▪ Interior Renovation	= \$750,000
▪ FFE / Fees / Permits	= \$150,000
▪ Total Costs	<u>= \$1,500,000</u>
- Schedule:
 - Design – June 2008 – Aug. 2008
 - Construction - Sept 2008 – Feb. 2009
 - Open for students – April 2009



PROPOSED OPTION 5



PROJECT DETAILS (Option 5)

Scope:

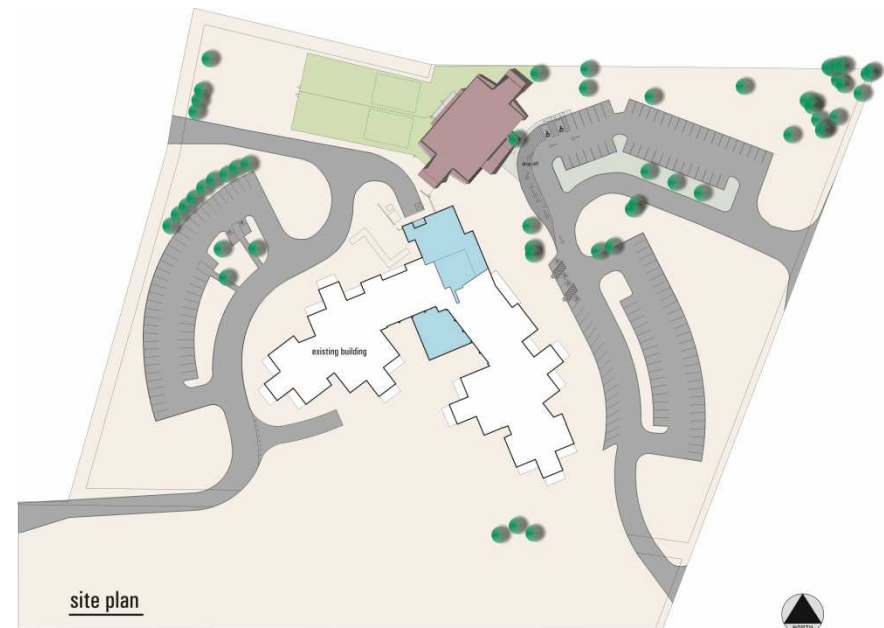
- Expand Kitchen Preparation Area
- Add new Library, Parent Resource Room and Offices in New Addition
- Renovate existing Parent Resource Room to be new Dining Hall

Cost:

▪ Kitchen / Dining Hall renovation	= \$775,000
▪ New Library / Parent Resource addition	= \$1,350,000
▪ Relocate Courtyard Amenities	= \$75,000
▪ FFE / Fees / Permits	= \$250,000
▪ Total Costs	= \$2,450,000

Schedule:

- Design – June 2008 – Aug. 2008
- Construction – Sept. 2008 – July 2009
- Open for students – Aug. 2009



PROPOSED OPTION 6



PROJECT DETAILS (Option 6)

Scope:

- New School for Young Children on new site.
- Adds capacity for 280 new students.

Cost:

▪ New 43,000 sf=	\$8,600,000
▪ FFE / Fees / Permits	= \$1,000,000
▪ Total Costs	= <u>\$9,600,000</u>
▪ New 10-12 Acre site	= T.B.D.

Schedule:

- Design – June 2008 – Dec. 2008*
- Construction – Jan. 2009 – April 2010*
- Open for students – Aug. 2010*

*Dependant on land acquisition time line

