

November 2016

Derby Public Schools

Performance Dashboard

Derby High School

Martin Pascal, Principal

“People without information cannot act. People with information cannot help but act.”

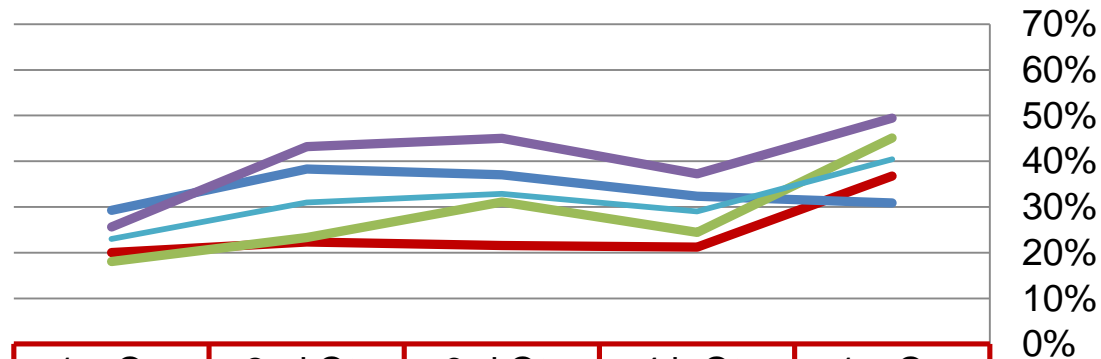
Ken Blanchard



Quarterly Data

High Grades

Percent of students earning 80% or above in all courses regardless of academic level:

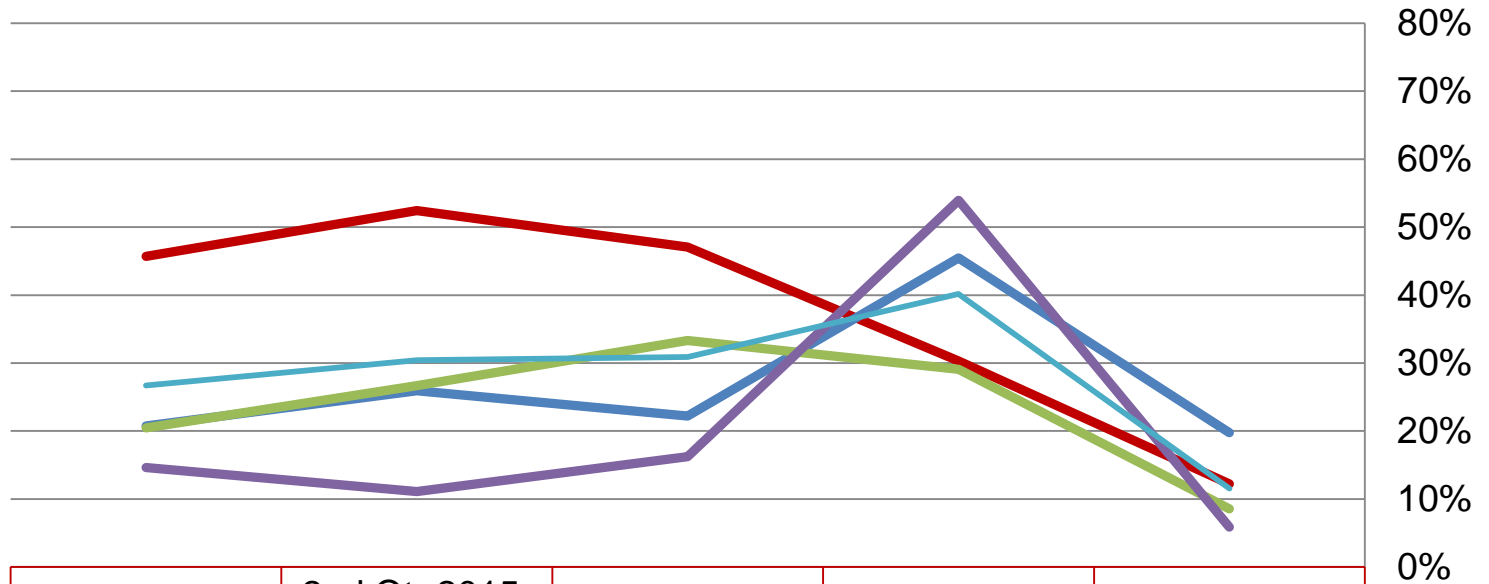


	1st Qtr 2015-16	2nd Qtr 2015-16	3rd Qtr 2015-16	4th Qtr 2015-16	1st Qtr 2016-17
Grade 9	20.0%	22.3%	21.6%	21.2%	36.7%
Grade 10	29.3%	38.3%	37.0%	32.3%	30.9%
Grade 11	18.1%	23.3%	31.1%	24.4%	45.1%
Grade 12	25.6%	43.2%	45.0%	37.3%	49.4%
Grades 9 - 12	23.0%	31.0%	32.9%	29.0%	40.5%

Failing Grades

Derby High School

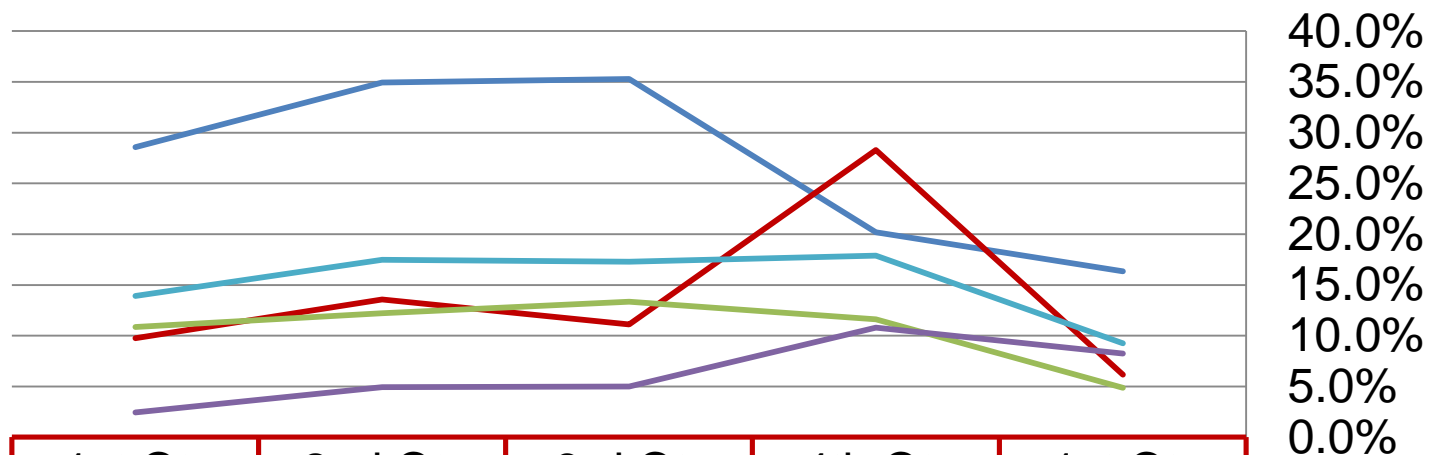
Percent of students with at least one course below a 65%:



	1st Qtr 2015-16	2nd Qtr 2015-16	3rd Qtr 2015-16	4th Qtr 2015-16	1st Qtr 2016-17
Grade 9	45.7%	52.4%	47.1%	30.3%	12.2%
Grade 10	20.7%	25.9%	22.2%	45.5%	19.8%
Grade 11	20.5%	26.7%	33.3%	29.1%	8.5%
Grade 12	14.6%	11.1%	16.3%	53.9%	5.9%
Grades 9 - 12	26.7%	30.4%	30.9%	40.2%	11.6%

Failing Grades

Percent of students with at least two courses below a 65%:



	1st Qtr 2015-16	2nd Qtr 2015-16	3rd Qtr 2015-16	4th Qtr 2015-16	1st Qtr 2016-17
— Grade 9	28.6%	35.0%	35.3%	20.2%	16.3%
— Grade 10	9.8%	13.6%	11.1%	28.3%	6.2%
— Grade 11	10.8%	12.2%	13.3%	11.6%	4.9%
— Grade 12	2.4%	4.9%	5.0%	10.8%	8.2%
— Grades 9 - 12	13.9%	17.5%	17.3%	17.9%	9.2%

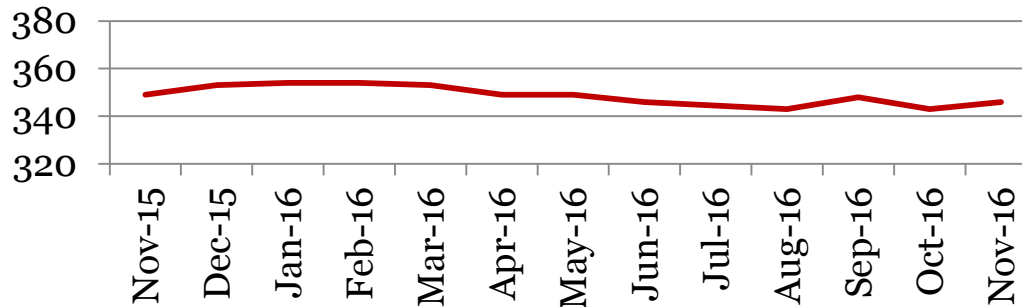
Monthly Data

Derby High School

Enrollment – 1st of the month

	9	10	11	12	Total
Nov-16	98	81	82	85	346
Oct-16	98	78	83	84	343
Sept-16	99	81	84	84	348
Jun-16	98	81	90	77	346
May-16	99	81	91	78	349
Apr-16	100	80	91	78	349
Mar-16	102	81	90	80	353
Feb-16	103	81	90	80	354
Jan-16	103	79	90	82	355
Dec-15	105	83	83	82	353
Nov-15	103	83	82	81	349

Total School Enrollment

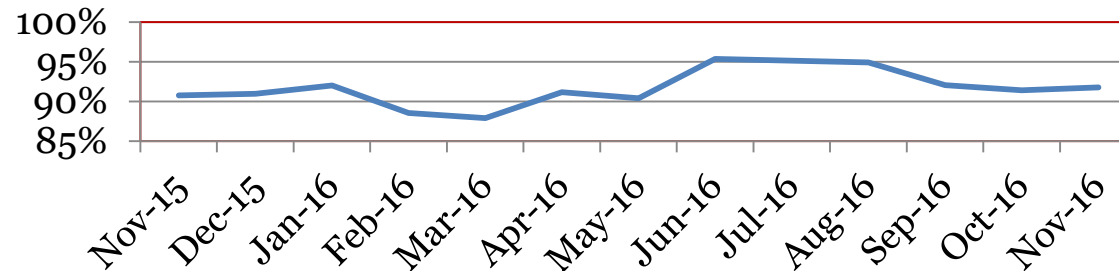


Attendance – Students

Average daily percent present:

	9	10	11	12	Total
Nov-16	90	91	93	93	92
Oct-16	88	92	93	93	91
Sept-16	89	95	93	92	92
Jun-16	92	96	95	100	95
May-16	87	94	92	89	90
Apr-16	90	94	92	89	91
Mar-16	86	91	87	88	88
Feb-16	86	91	89	89	89
Jan-16	88	95	94	92	92
Dec-15	90	91	93	90	91
Nov-15	88	91	94	91	91

Total Student Attendance

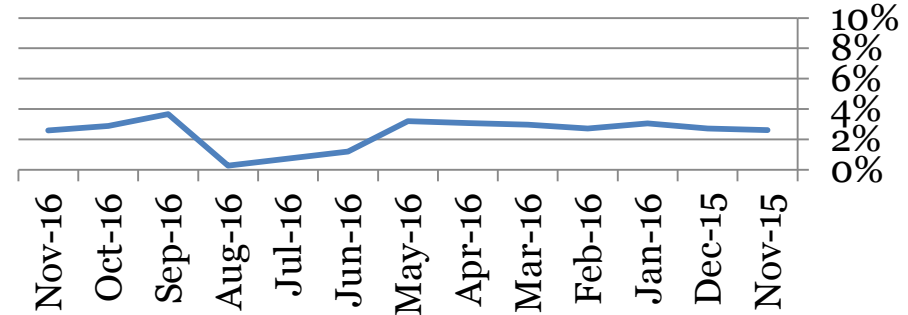


Tardies Average daily percent tardy:

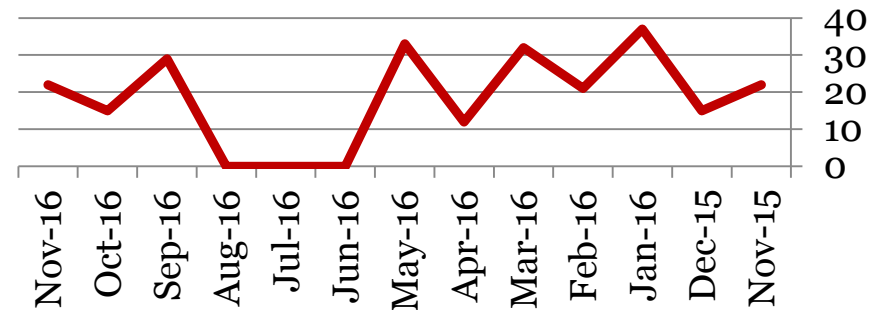
	9	10	11	12	Total
Nov-16	2	3	2	3	3
Oct-16	3	3	3	3	3
Sep-16	3	4	4	4	4
June-16	1	2	1	1	1
May-16	4	3	3	4	3
Apr-16	3	2	3	4	3
Mar-16	3	3	3	3	3
Feb-16	3	2	2	3	3
Jan-16	3	3	5	2	3
Dec -15	3	3	2	3	3
Nov -15	3	2	2	3	3

Derby High School

Total Student Tardies



Students over Threshold



Tardies: Number of students tardy 5 or more days:

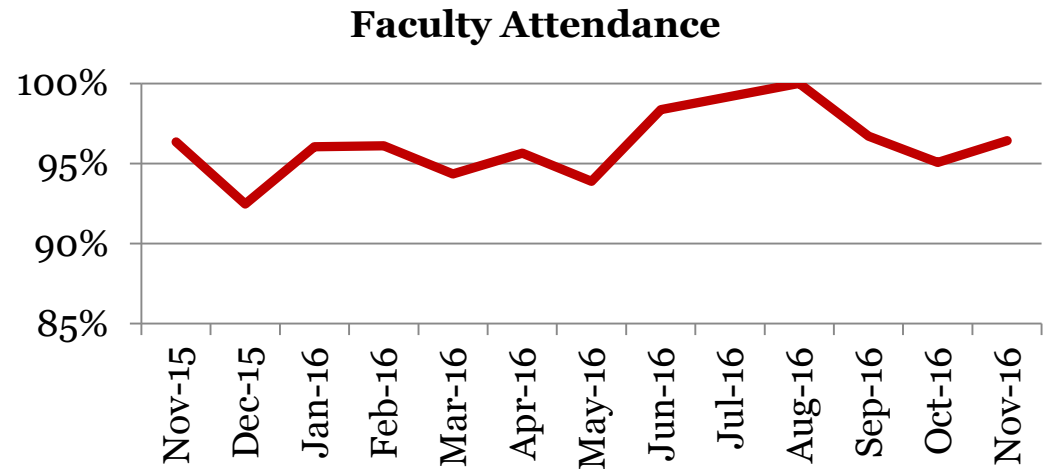
	9	10	11	12	Total
Nov-16	7	5	2	8	22
Oct-16	1	5	4	5	15
Sep-16	4	11	9	5	29
June-16	0	0	0	0	0
May-16	11	4	10	8	33
Apr-16	5	2	3	2	12
Mar-16	11	7	6	8	32
Feb-16	7	3	5	6	21
Jan-16	6	2	27	2	37
Dec-15	8	3	1	3	15
Nov-15	8	2	4	8	22

Attendance – Faculty

Average daily percent present:

Derby High School

	Total
Nov-16	96
Oct-16	95
Sept-16	97
June-16	98
May-16	94
Apr-16	96
Mar-16	94
Feb-16	96
Jan-16	96
Dec-15	92
Nov-15	96



**This indicator reflects certified staff and does not include absences created by class trips, professional development, workman's comp and FMLA. However % may be reduced due to long term illness beyond FMLA.*

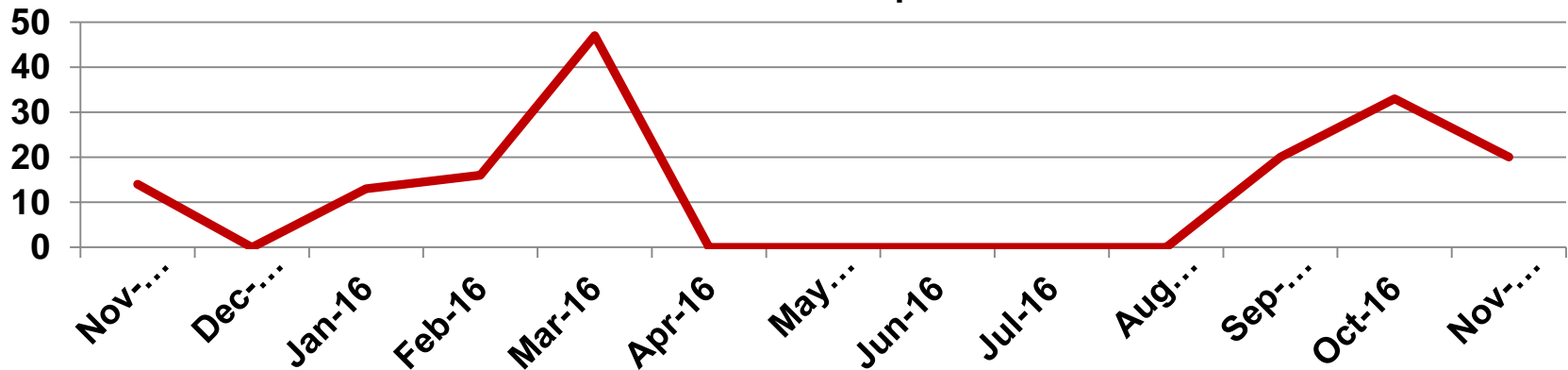
Suspensions – Out of School

Derby High School

Number of student suspensions (total days of suspension):

	9		10		11		12		Total	
Nov-16	2	(15)	1	(3)	1	(2)	0	(0)	4	(20)
Oct-16	2	(20)	0	(0)	2	(13)	0	(0)	4	(33)
Sept-16	1	(2)	0	(0)	2	(15)	1	(3)	4	20
Jun-16	0	(0)	0	(0)	0	(0)	0	(0)	0	(0)
May-16	0	(0)	0	(0)	0	(0)	0	(0)	0	(0)
Apr-16	1	(10)	0	(0)	0	(0)	0	(0)	1	(10)
Mar-16	3	(22)	1	(10)	1	(3)	2	(12)	7	(47)
Feb-16	1	(2)	0	(0)	2	(12)	1	(2)	4	(16)
Jan-16	2	(11)	0	(0)	0	(0)	2	(2)	4	(13)
Dec-15	0	0	0	(0)	0	(0)	0	(0)	0	(0)
Nov-15	1	(10)	0	(0)	2	(4)	0	(0)	3	(11)

Total Out of School Suspensions

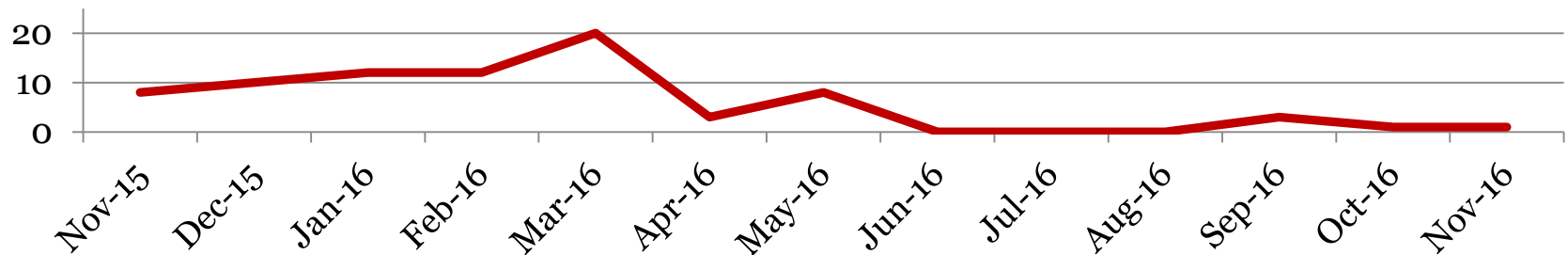


Suspensions – In School

Number of student suspensions (total days of suspension):

	9		10		11		12		Total	
Nov-16	0	(0)	1	(1)	0	(0)	0	(0)	1	(1)
Oct-16	1	(1)	0	(0)	0	(0)	0	(0)	1	(1)
Sept-16	1	(1)	2	(2)	0	(0)	0	(0)	3	(3)
Jun-16	0	(0)	0	(0)	0	(0)	0	(0)	0	(0)
May-16	6	(7)	0	(0)	0	(0)	1	(1)	7	(8)
Apr-16	0	(0)	1	(1)	0	(0)	1	(2)	2	(3)
Mar-16	2	(2)	2	(3)	2	(2)	7	(13)	13	(20)
Feb-16	4	(6)	3	(4)	0	(0)	2	(2)	9	(12)
Jan-16	8	(9)	0	(0)	2	(3)	0	(0)	10	(12)
Dec-15	5	(7)	0	(0)	2	(3)	0	(0)	7	(10)
Nov-15	4	(4)	0	(0)	1	(1)	2	(3)	7	(8)

Total In School Suspensions



Newly Enrolled Students

	9	10	11	12	Total
Nov-16	1	1	1	0	3
Oct-16	2	3	3	1	9
Sept-16	11	1	4	1	17
Summer-16	6	5	4	5	20
June-16	0	0	0	0	0
May-16	0	1	1	1	3
Apr-16	0	1	0	0	1
Mar-16	0	0	1	0	1
Feb-16	0	1	1	0	2
Jan-16	1	2	0	0	3
Dec-15	3	1	1	0	5
Nov-15	3	1	2	1	7

Departing Students

Students who have left the school during the month for any reason:

	9	10	11	12	Total
Nov-16	0	1	0	0	1
Oct-16	3	1	3	1	8
Sept-16	1	1	1	1	4
Summer-16	13	11	2	3	29
June-16	3	0	0	0	3
May-16	1	1	2	0	4
Apr-16	1	0	0	0	1
Mar-16	2	1	0	1	4
Feb-16	1	1	1	0	3
Jan-16	1	0	1	2	4
Dec-15	0	1	0	1	2
Nov-15	1	2	0	0	3

Dropouts

Student who discontinue schooling, leave for a GED program/Job Corp, or are disenrolled by grade level.

	9	10	11	12	Total
Nov-16	0	0	0	0	0
Oct-16	0	0	0	0	0
Sept-16	1	1	0	1	3
Summer-16	1	0	0	1	2
June-16	0	0	0	0	0
May-16	0	1	2	0	3
April-16	0	1	0	0	1
Mar-16	1	0	1	0	2
Feb-16	0	0	1	0	1
Jan-16	0	0	0	0	0
Dec-15	0	1	0	0	1
Nov-15	0	0	2	0	2