

## Browning Elementary School

### Board Report

November 2017

To be safe, Expect respect, Act responsibly Mindful learner BES (TEAM BES).  
MBI mission is Promoting a positive, safe, and respectful environment that will last a lifetime.

**Certified Perfect Attendance for October-56%**

**Classified Perfect Attendance for October-33%**

**BES staff Perfect Attendance Total for October-45%**

**100% Attendance for October-0**

**2<sup>nd</sup> grade % for October 90%**

**3<sup>rd</sup> grade % for October 87%**

**4<sup>th</sup> grade % for October 98%**

**BES Student % for October 92%**

**Home visits- 20**

**Enrollment for October: 2<sup>nd</sup> grade 122 3<sup>rd</sup> grade 168 4<sup>th</sup> grade 2 Total: 292**

**Referrals for October: 2<sup>nd</sup> 5 3<sup>rd</sup> 7 4<sup>th</sup> 0**

**Perfect Attendance: 2<sup>nd</sup> 11 3<sup>rd</sup> 12 4<sup>th</sup> 1 Total :24**

**95% or better: 2<sup>nd</sup> 53 3<sup>rd</sup> 49 4<sup>th</sup> 1 Total: 103**

**Absent or Drop students: Dropped:1 Transferred:4 Unaccounted for: 1 (same one who is dropped, we know where just can't get her back to Browning.)**

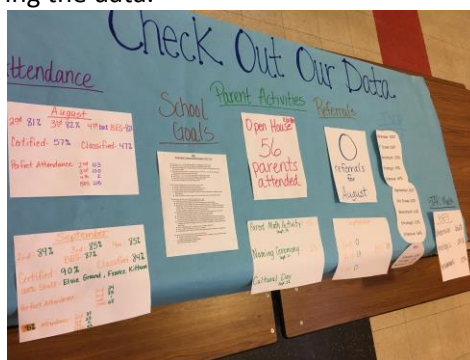
### Reservation Cultural Tour October 10 & 11<sup>th</sup>

Both grade levels went and toured the reservation: tipi rings, buffalo jump, museum, Napi's rock and ate lunch at Twin's Lake. Our students, staff and chaperones learned a lot and enjoyed the nice fall weather while it lasted.



### BES Fall Data Meeting October 12

26 community members came to BES to learn about our school data. Our staff and community also learned where we display our data and why we are measuring the data.



### **Family Math Activity October 17**

65 parents plus students attended our Math Activity. We had a traditional game that focuses on adding as well as honing hunting skills. We had time, clock, addition and subtraction bingo games. We also had a make t take it fraction game. Cookies and water were served as refreshments and fun was had by all who attended.



### **Red Ribbon Week Activities- Other things to do besides drugs**

#### **Smokey the Bear and Billy the Bushwhacker Visit-October 26-**

Carter Gallineaux, Smokey the Bear and Billy the Bushwhacker came to visit the BES students and gave a little talk about fire safety and wild fires. Every student got a high 5, sticker, candy bags with candy and teachers received posters.

### **BES Dance in the Gym**

BES students spent time practicing their Christmas Dances in the gym. The kids had a great time Indian Dancing, Country Line Dancing, and Square Dancing. Thank you to the Specials Teachers who coordinated this activity.



### **Cultural Day October 27**

BES teachers hosted their second cultural day. Second grade students rotated to another teacher and they taught last month's cultural lesson to other 2<sup>nd</sup> grade students. This provided the students with other teaching styles and a view at another second-grade class. The third-grade classes had lesson on Traditional games, Stick Games, Story Telling-Ghost Stories, and a virtual reality tour of Native American topics.

### Plan and Design-3<sup>rd</sup> grade Science Lesson

Mrs Boyce and Miss Worthy's 3<sup>rd</sup> grade science lesson on Plan and Design took another unique turn. The lesson asked just for a bird house design. These classes took it a step further and actually built a tree house from those plans in groups of 2-3. The student worked very hard on the plans and the finished product. After they were finished with the initial plan finishing touches were made to make sure the structure was sound. These houses are displayed in the hallway and other students admire and take care not to ruin the projects.

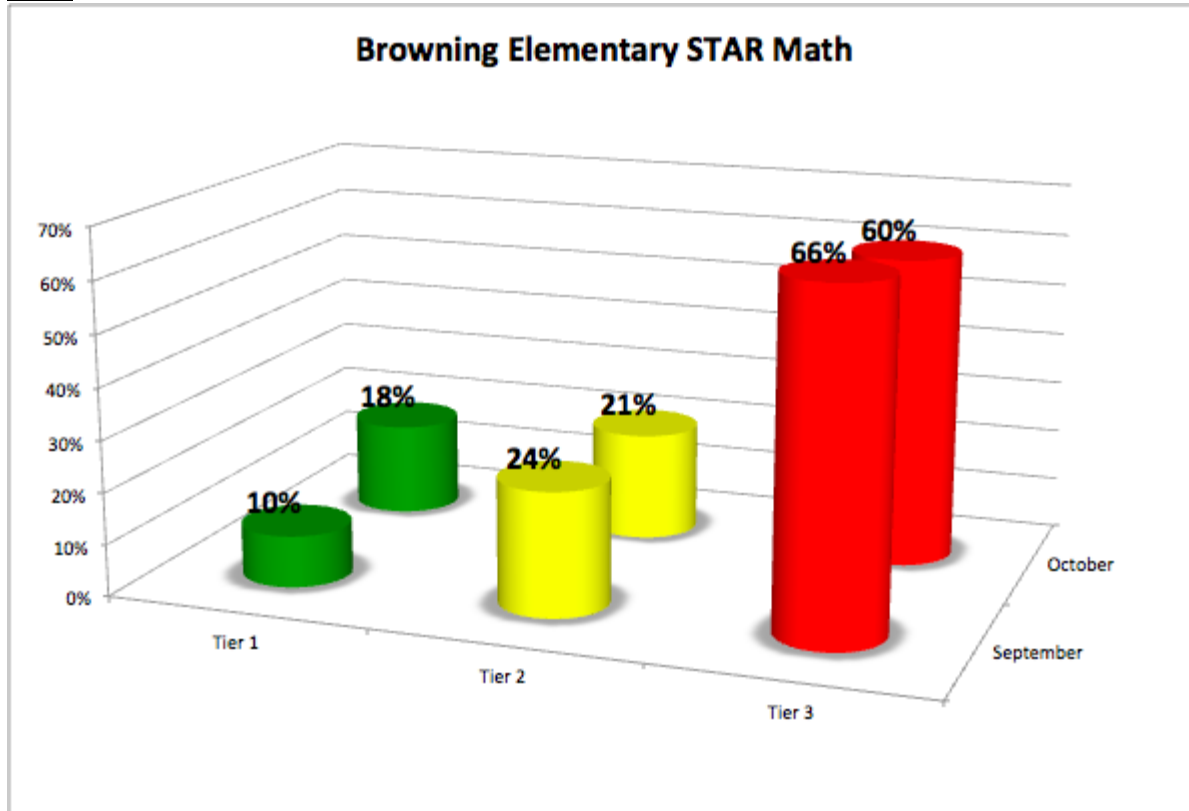


### Caught ya Cards

Caught ya cards can be handed out anywhere in the building when the positive behavior is observed. Students, staff and family members can all receive caught ya cards. After receiving the card, pictures and the card are posted in the hallway by the office.



**Math**



BES	Number of students	Percent
Tier 1: Proficient or above	58 students	18%
Tier 2: Just below proficient	67 students	21%
Tier 3: Intervention	195 students	60%

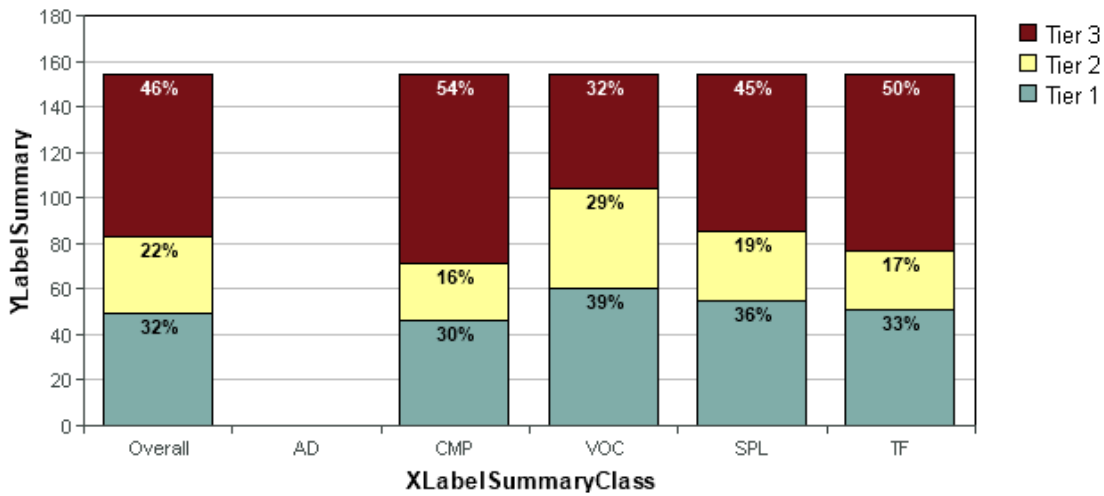
Our goal is to increase Tier 1 from 10% to 20% and to decrease Tier 3 from 66% to 55%. Our Tier 1 goal is to increase the Tier by 10%: As we progress monitor for the month of October it shows that we increased our Tier 1 by 8% this month. We went from 10% to 18%. Our Tier 3 goal is to decrease the Tier by 10%: As we progress monitor for the month of October it shows that we decreased our Tier 3 by 6% this month. We went from 66% to 60%.

**ELA**

Increase **Proficient** by 10% in Reading on ISIP by May 2018

Decrease **Intensive** by 10% in Reading on ISIP by May 2018

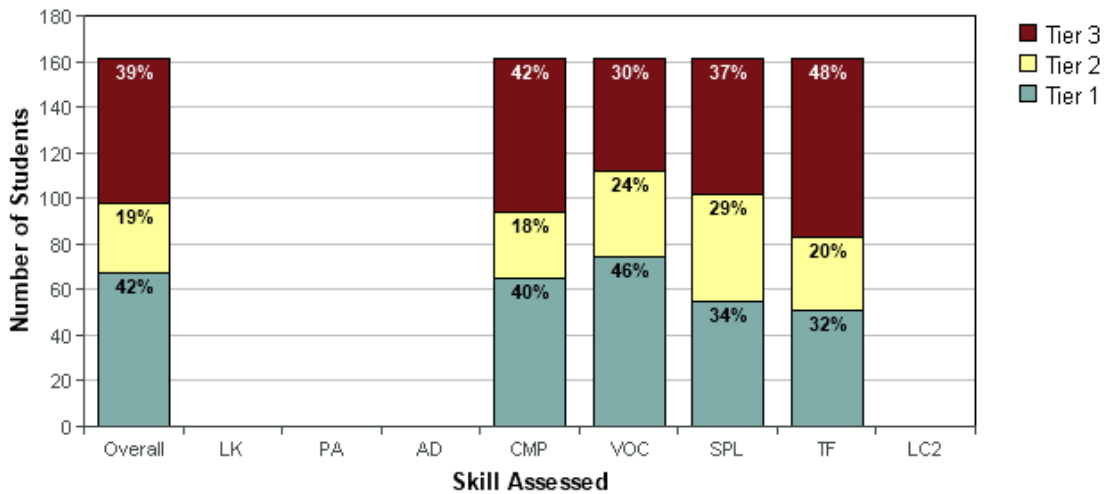
## 2nd Grade - October 2017



Tier	Sept	Oct	Jan Goal
Intensive	74 or 49%	71 or 46%	39%
Strategic	29 or 19%	34 or 22%	XXXXXX
Benchmark	49 or 32%	49 or 32%	42%

- Intensive decreased from 49% to 46% for a total of 3 students
- Strategic increased from 19% to 22%
- Benchmark stayed the same from September to October
- ✓ Intensive needs to decrease by 10% to reach the goal of 39% for January 2018
- ✓ Benchmark needs to increase by 10% as well to meet the January 2018 goal of 42%

## 3rd Grade - October 2017



Tier	Sept	Oct	Jan Goal
Intensive	57 or 36%	63 or 39%	26%
Strategic	36 or 27%	31 or 19%	XXXXXXXXXXXX
Benchmark	65 or 41%	67 or 42%	51%

- Intensive increased from 36% to 39% for a total of 6 students
- Strategic decreased from 27% to 19%
- Benchmark increased slightly from 41% September to 42% in October
- ✓ Intensive needs to decrease by 13% to reach the goal of 26% for January 2018
- ✓ Benchmark needs to increase by 9% to meet the January 2018 goal of 51%

As always, Board Members are welcome to visit our wonderful school!