



UNITED INDEPENDENT SCHOOL DISTRICT AGENDA ACTION ITEM

Topic: Proposed Boundary Change for 2014-2015 School Year

Submitted by: Mike Garza of: Executive Director of Support Services

Approved for transmittal to school board: April 15, 2014

Recommendations:

Administration is recommending that the Board of Trustees approve the proposed boundary change for school year 2013-2014 as presented for Prada Elementary and Perez Elementary. Feeder pattern will be Prada Elementary, Lamar Bruni Vergara Middle School, and Lyndon B. Johnson High School.

Rationale:

They boundary changes are being proposed to provide efficient use of district facilities. Existing attendance boundaries would create overcrowding at certain facilities while other facilities would be under-utilized. This is a temporary boundary change until the proposed Cielito Lindo Elementary is constructed.

Budgetary Information:

N/A

Board Policy Reference and Compliance

N/A

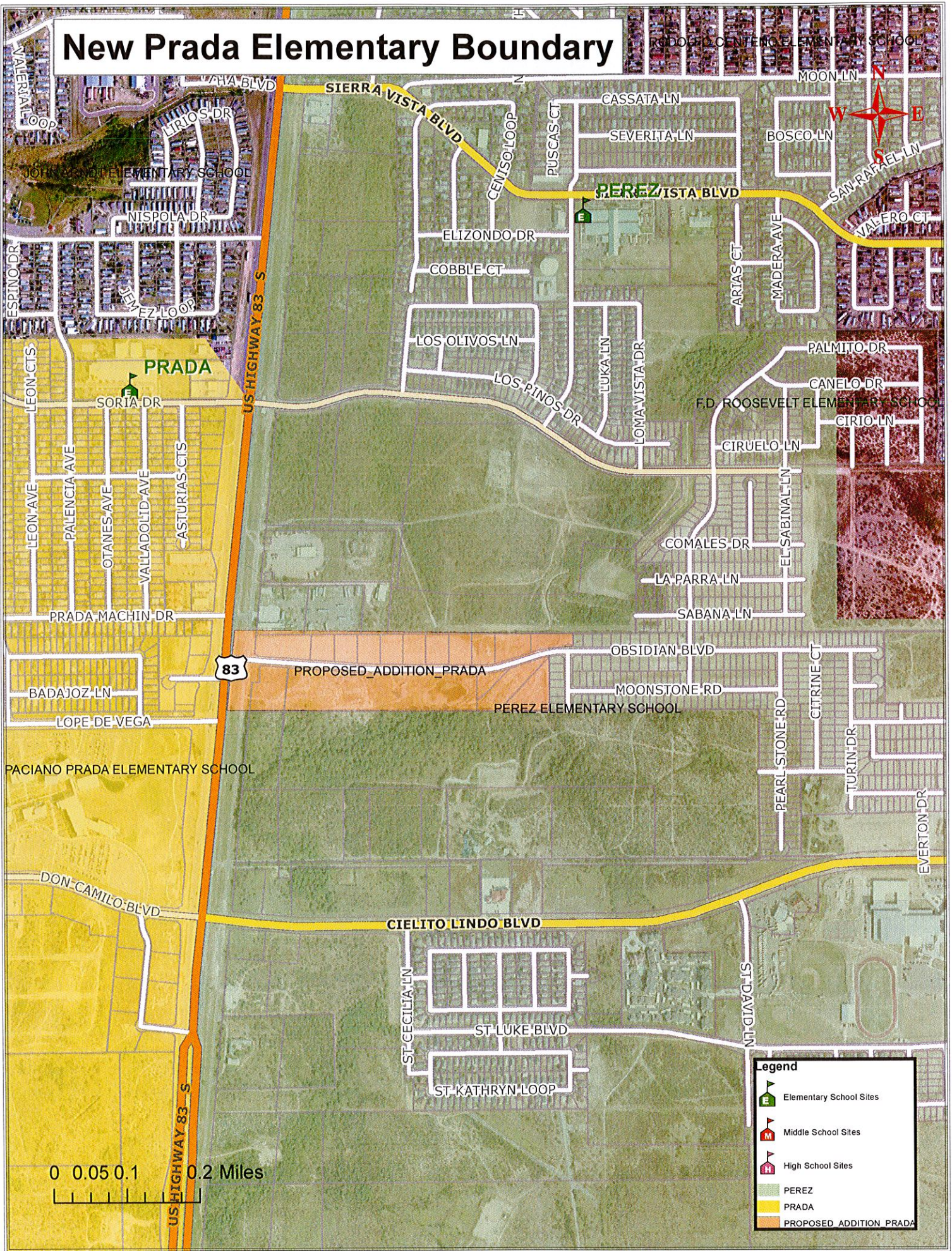
United Independent School District

Proposed Elementary School Attendance Boundary for 2013-2014

1. Prada Elementary School

The Northeastern boundary starts on US HWY 83 and Soria Dr, North to Casares Ct, West on Pamplona Loop to Rio Grande River, and all students living on Mangana Hein Rd (Las Presas area) and 100-220 Obsidian Blvd. to include the La Joya Apartments.

New Prada Elementary Boundary



Legend	
	Elementary School Sites
	Middle School Sites
	High School Sites
	PEREZ
	PRADA
	PROPOSED ADDITION PRADA

0 0.05 0.1 0.2 Miles