



Academic Transformation Plan Summer Update

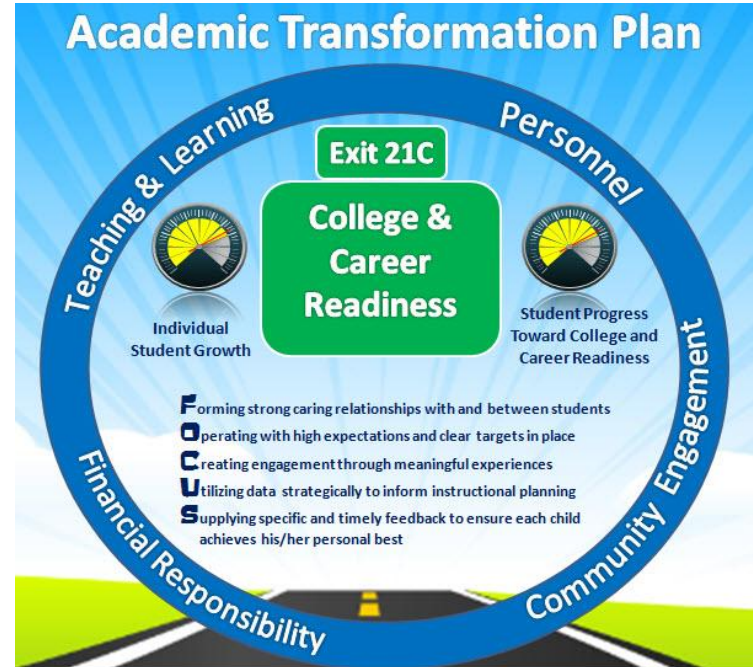
BOARD OF EDUCATION PRESENTATION | JULY 22, 2024



Our Mission & Vision

INSPIRING EDUCATION AND INNOVATION

In partnership with family and community, Woodridge School District 68 will provide a comprehensive educational foundation for all children in a safe, caring environment, preparing them to be productive, responsible, and successful members of society.





Today's Targets

ATP UPDATE: SUMMER 2024

- Provide updates on the Spanish after school programming initiative and our work with AI
- Share growth data and tentative IAR information
- Preview teaching and learning initiatives for the coming year



Spanish After School Programming



Program Facts

- 3 sessions (~65 days)

Strengths

- Introduced over 350 students to the Spanish language and culture
- 80% of students attended more than one session

Opportunities

- Continued communication with parents by Language Labs
- Large class sizes

Artificial Intelligence (AI)

Staff Usage

- Professional development by AI in schools expert, Holly Clark on 10/31

Jefferson Focus

- 5-part series conducted by Tech Specialist Tarah Tesmer (see attachment)

Next Steps

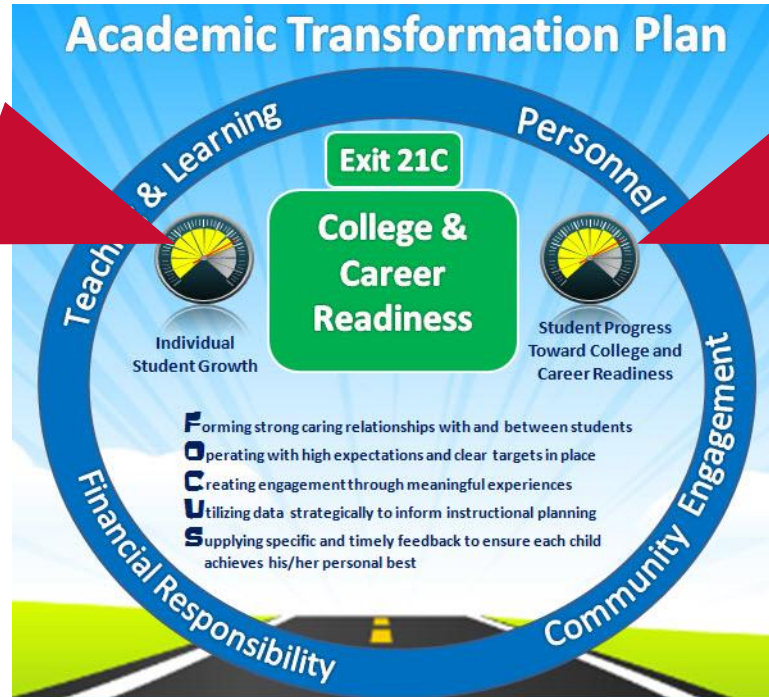
- Elementary coaching and knowledge building
- Depth of knowledge AI planning tool
- *School AI* program for students in grades 5-8



Growth Data

TWO GUAGES

**ECRA
Data**



IAR



ECRA Updates

INDIVIDUAL STUDENT GROWTH

District spring growth update from ECRA Group

- All subjects: **+0.05**
- Math **+0.09**
- Reading **+0.01**

Note: Please see separate growth handout in Board packet

Individual Student Growth

OVERALL

Student Growth by School

School:	Student Count [^]	% Met Benchmark	% High Growth	% Expected Growth	% Low Growth	Growth Effect Size
EDGEWOOD ELEMENTARY	232	39%	14%	76%	11%	+ 0.03
GOODRICH ELEMENTARY	303	49%	22%	64%	15%	+ 0.15
JEFFERSON JR HIGH	512	39%	12%	72%	17%	- 0.10
MEADOWVIEW ELEMENTARY	372	43%	11%	72%	17%	- 0.15
MURPHY ELEMENTARY	335	46%	24%	66%	10%	+ 0.29
SIPLEY ELEMENTARY	302	58%	18%	72%	10%	+ 0.15
WILLOW CREEK ELEMENTARY	315	46%	15%	74%	11%	+ 0.09
ALL	2,371	45%	16%	71%	13%	+ 0.05
EXPECTED			16%	68%	16%	0.00

* Dot color is green for all growth scores that are not statistically significant

[^] Student count only includes students with at least 1 predictor

**Percentages may not add to 100 due to rounding

***Results not reported for groups with fewer than 5 students

Individual Student Growth

MATH

Student Growth by School

School	Student Count [^]	% Met Benchmark	% High Growth	% Expected Growth	% Low Growth	Growth Effect Size
EDGEWOOD ELEMENTARY	232	33%	13%	76%	11%	+ 0.03
GOODRICH ELEMENTARY	303	43%	24%	62%	14%	+ 0.20
JEFFERSON JR HIGH	509	37%	12%	72%	16%	- 0.05
MEADOWVIEW ELEMENTARY	371	41%	13%	75%	13%	- 0.04
MURPHY ELEMENTARY	310	41%	25%	65%	10%	+ 0.32
SIPLEY ELEMENTARY	299	58%	21%	72%	7%	+ 0.26
WILLOW CREEK ELEMENTARY	312	37%	12%	76%	12%	+ 0.01
ALL	2,336	41%	17%	71%	12%	+ 0.09
EXPECTED			16%	68%	16%	0.00

* Dot color is green for all growth scores that are not statistically significant

[^] Student count only includes students with at least 1 predictor

**Percentages may not add to 100 due to rounding

***Results not reported for groups with fewer than 5 students

Individual Student Growth

READING

Student Growth by School

School	Student Count [^]	% Met Benchmark	% High Growth	% Expected Growth	% Low Growth	Growth Effect Size	
EDGEWOOD ELEMENTARY	232	46%	14%	75%	11%	+ 0.04	
GOODRICH ELEMENTARY	303	55%	19%	66%	15%	+ 0.10	
JEFFERSON JR HIGH	511	40%	11%	72%	17%	- 0.15	
MEADOWVIEW ELEMENTARY	372	46%	10%	69%	21%	- 0.26	
MURPHY ELEMENTARY	335	52%	23%	66%	11%	+ 0.25	
SIPLEY ELEMENTARY	302	58%	14%	72%	14%	+ 0.02	
WILLOW CREEK ELEMENTARY	315	55%	17%	73%	10%	+ 0.17	
ALL	2,370	49%	15%	71%	14%	+ 0.01	
EXPECTED			16%	68%	16%	0.00	

* Dot color is green for all growth scores that are not statistically significant

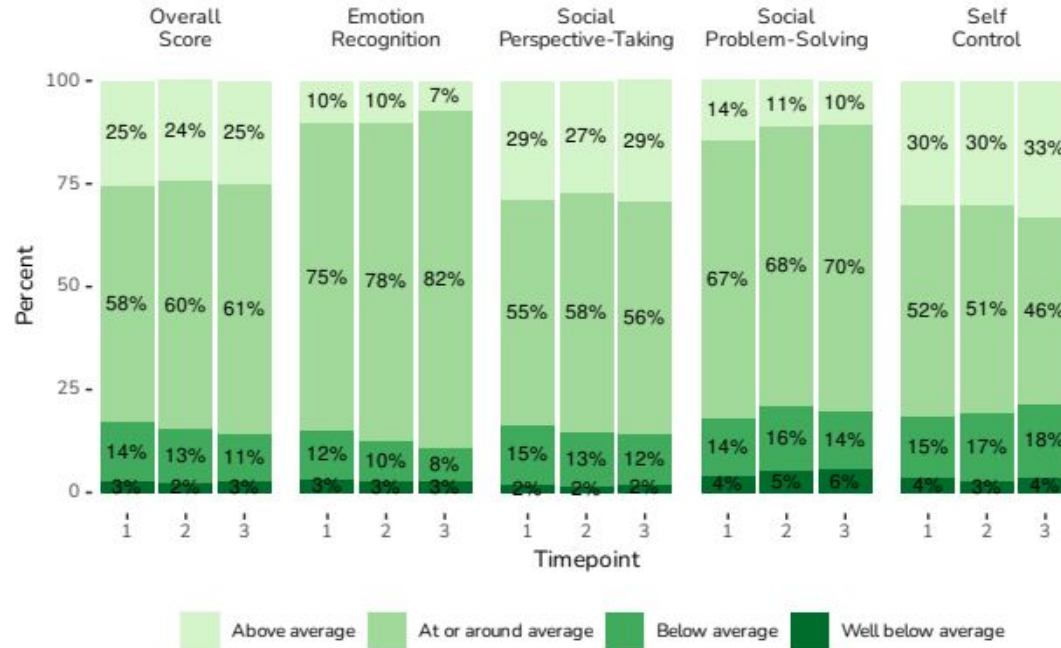
[^] Student count only includes students with at least 1 predictor

**Percentages may not add to 100 due to rounding

***Results not reported for groups with fewer than 5 students

SELweb

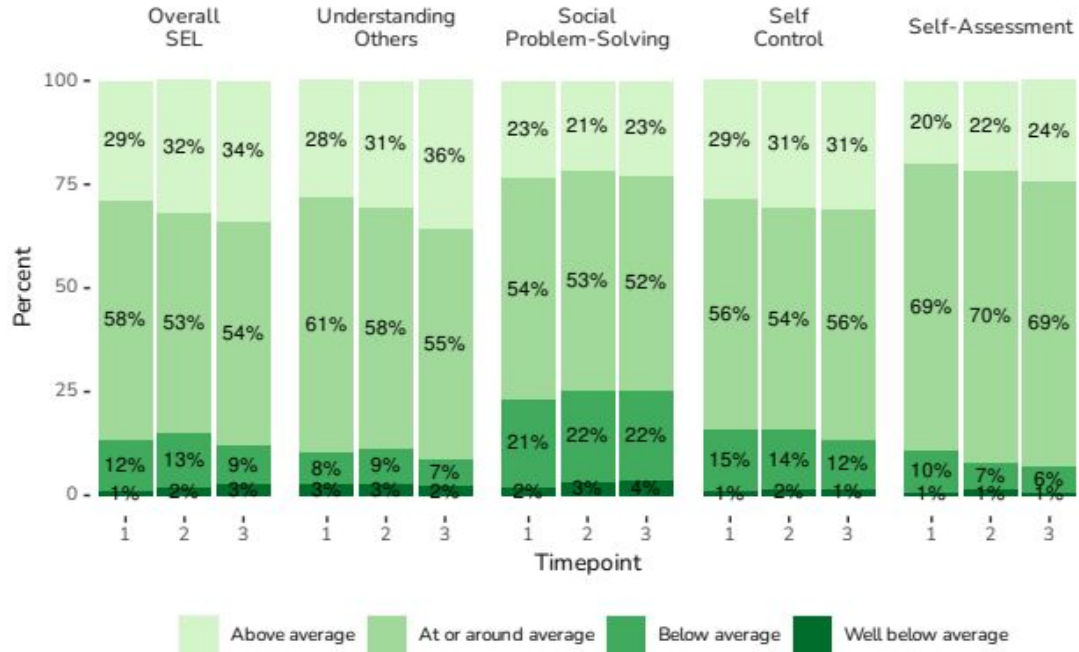
GRADES K-3



Above average: > 115; At or around average: 90-114; Below average: 70-89; Well below average: < 69

SELweb

GRADES 4-8



Above average: > 115; At or around average: 90-114; Below average: 70-89; Well below average: < 69



Teaching and Learning Plans

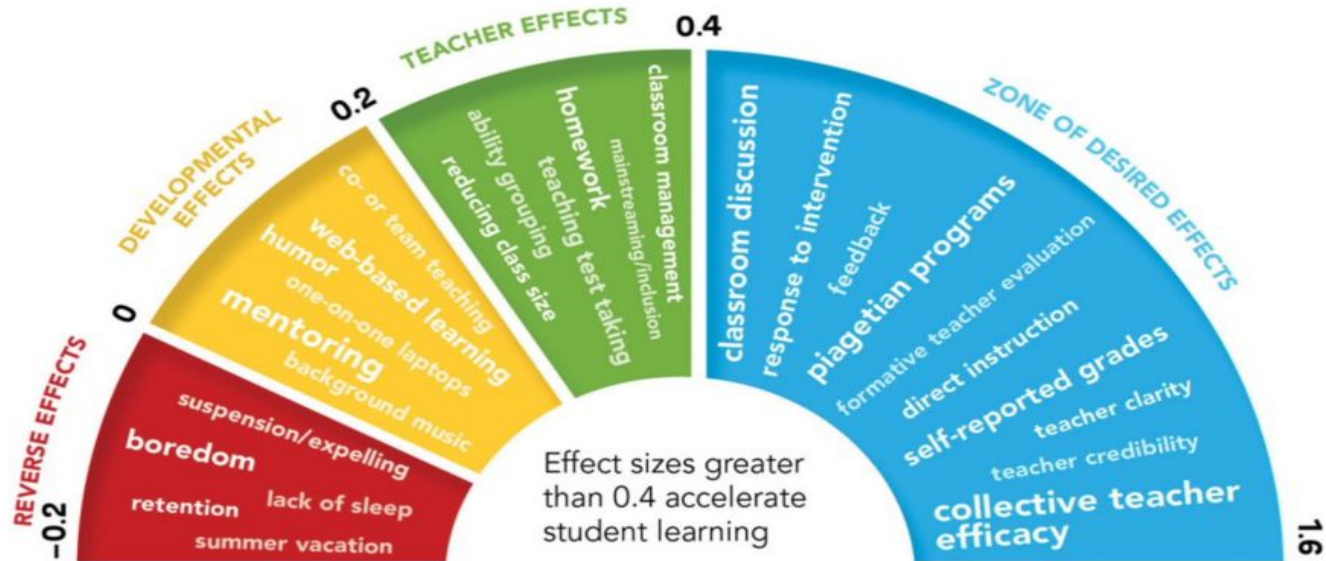
2024-25

- Collective Teacher Efficacy
- Impact Teams
- Notice, Name, Navigate
(introduced last year)

Collective Teacher Efficacy

DEFINITION

The shared belief by a group of teachers in a particular educational environment that they have the skills to positively impact student outcomes.





Impact Teams

IMPACT STATEMENT

Woodridge 68 believes collaborative impact teams drive student success by refining teaching methods through ongoing examination of instructional practices and strategic use of evidence. This ensures that every child thrives academically, socially, and emotionally.

Impact Teams

FOCUS ON IMPACT

Phases	Generic Question Starters
TEACH	<ul style="list-style-type: none"><input type="checkbox"/> What are we teaching?<input type="checkbox"/> How are we teaching it?<input type="checkbox"/> Why are we teaching it?
MEASURE	<ul style="list-style-type: none"><input type="checkbox"/> What are we measuring?<input type="checkbox"/> What does success look like?<input type="checkbox"/> How will we collect the data?
LEARN	<ul style="list-style-type: none"><input type="checkbox"/> What was the impact on learning?<input type="checkbox"/> How will this change teaching?<input type="checkbox"/> What are the next steps?



Notice, Name, Navigate

SELF-REGULATORY PROCESS

Notice

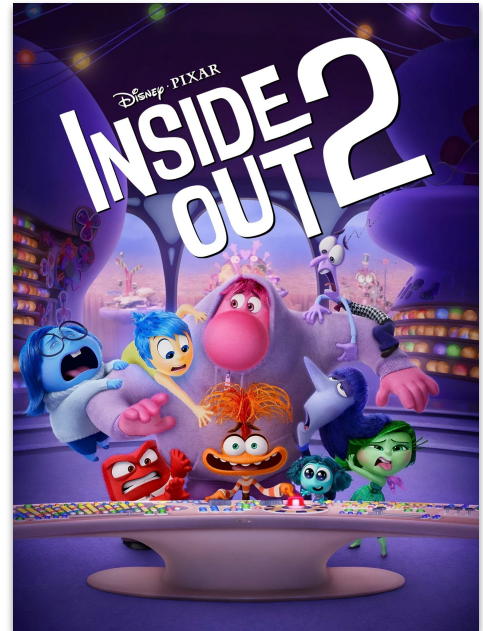
- Recognize bodily sensations and thoughts

Name

- Categorize the emotion
- “I am feeling/experiencing....”

Navigate

- Determine a strategy to get to where you need to be



Recap

ATP UPDATE: SUMMER 2024

1. Provided updates on the Spanish after school program
2. Shared growth data and tentative IAR information
3. Previewed teaching and learning initiatives for the coming year



Questions? Thoughts?

ATP UPDATE: SUMMER 2024

